

# RMViewer User Guide

## Introduction

RMViewer (ReleaseManagerViewer) is a GUI application designed to provide access to SCons RM build information as well as installation of releases, externals, and includes a "tag collector" facility for owners of ScienceTools and GlastRelease.

Please send comments to Joanne Bogart (jrb@slac.stanford.edu).

## Obtaining RMViewer

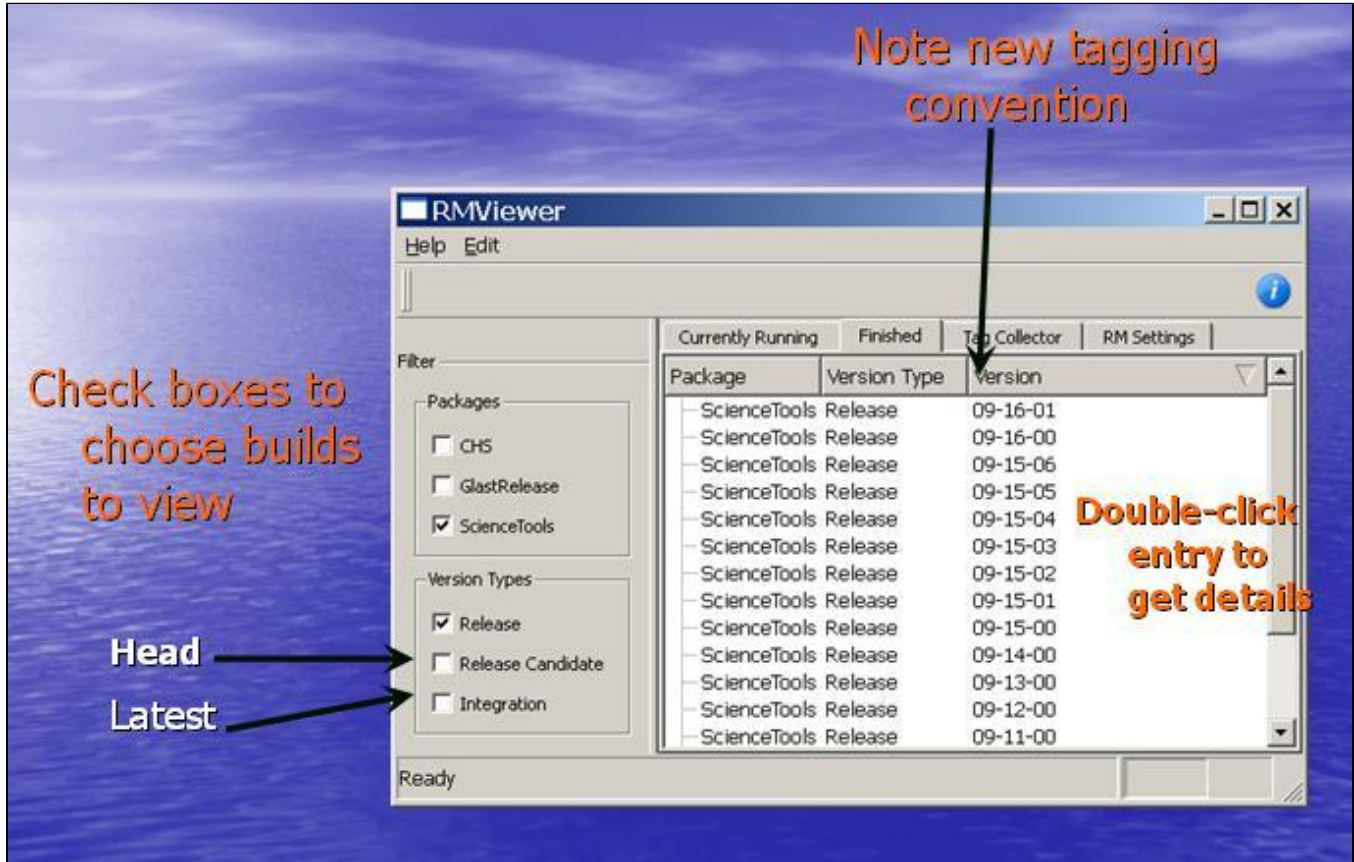
RMViewer is available for RHEL4, RHEL5, Mac, and Windows from: <ftp://ftp-glast.slac.stanford.edu/glast.u05/RMViewer/>

## Using RMViewer

After installation you will find the RMViewer.exe application. Execute this application and you will see RMViewer at startup:

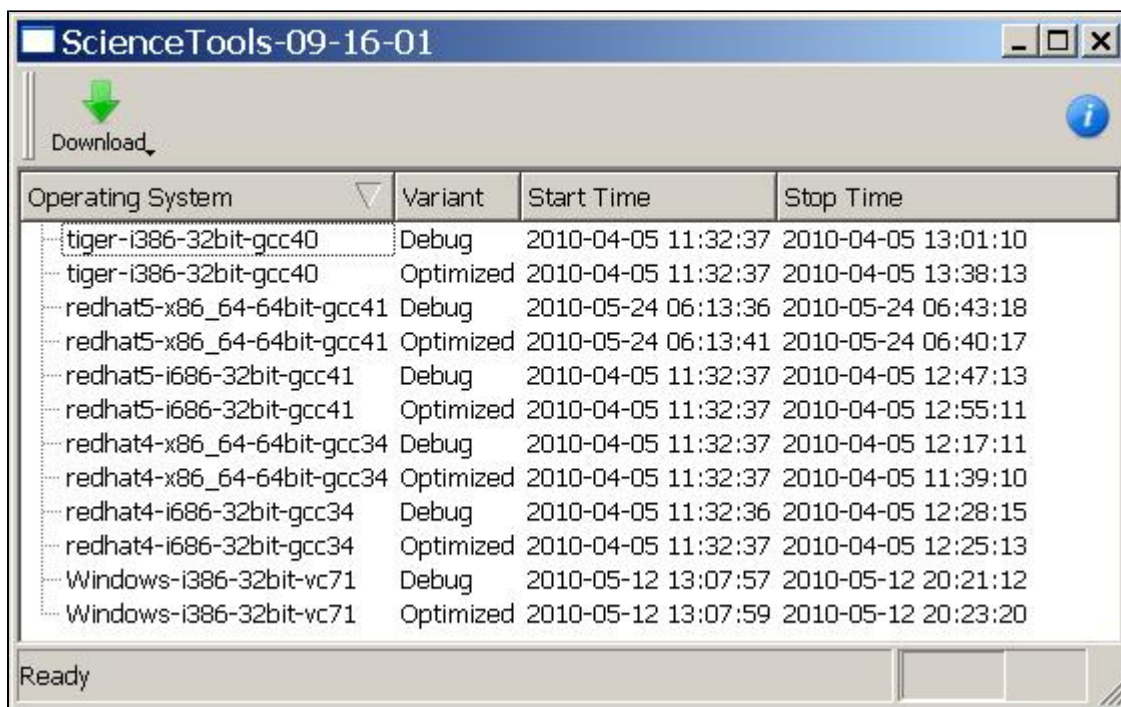


Initially there will be no builds displayed until the user chooses the package(s) and version(s) to be displayed. For example, check ScienceTools, Release, and click the Finished tab:

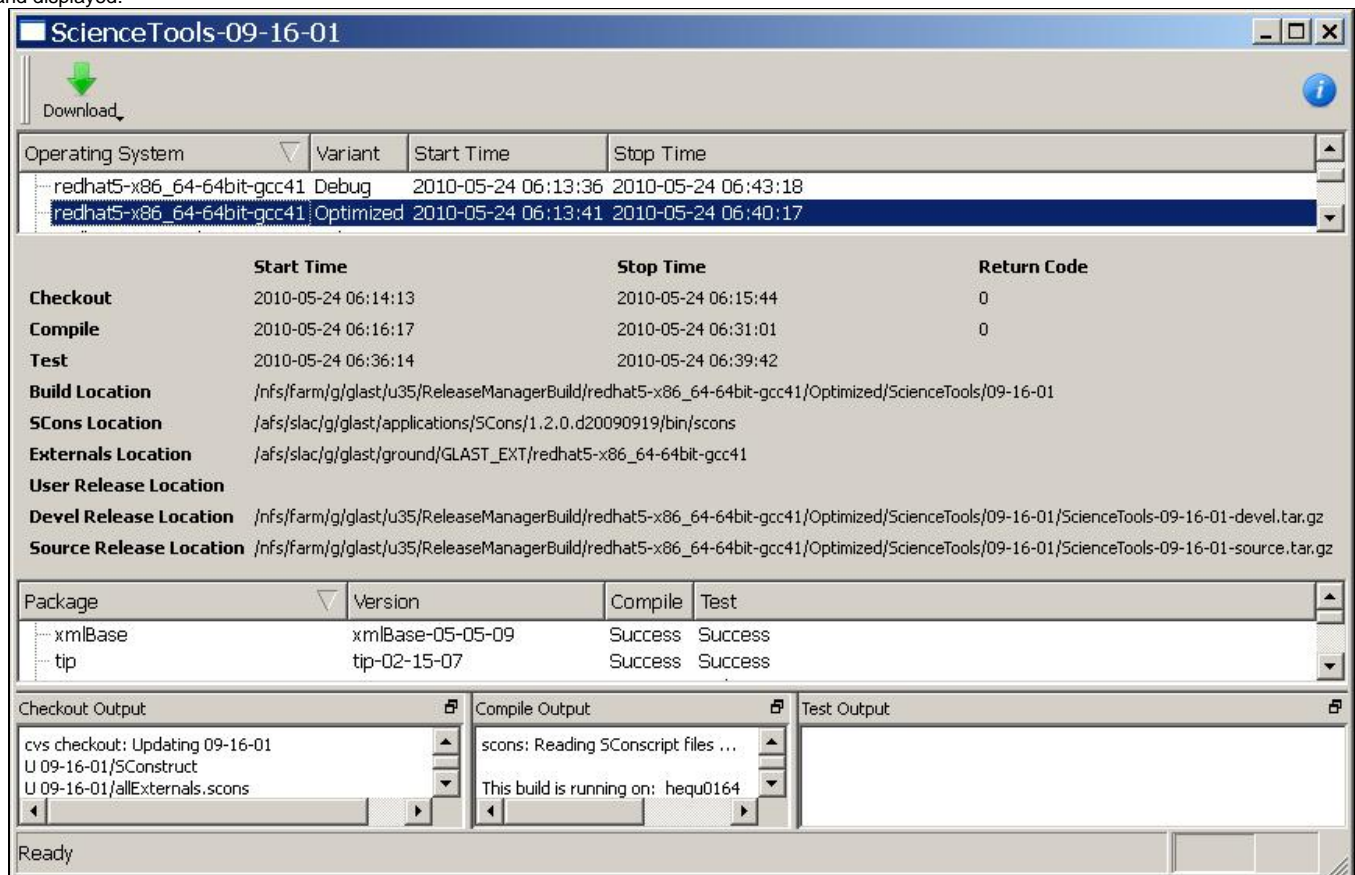


Displayed builds can be sorted by Package, Version Type, or Version by clicking on those tabs.

Now to view the details about a particular build, double click on one of the displayed builds, such as "Science Tools Release 09-16-01". A new window will appear (It may take some time for all of the content to appear, as there may be a delay in fulfilling the query request to MySQL, when the window is fully populated, "Ready" will appear in the lower left corner):



To view the summary of the build for a particular operating system and variant (debug or optimized), double-click on one and the information will be loaded and displayed:





## Installing a User or Developer Releases, Externals, or Source





Note the Download button, use this feature to download binary releases, external libraries or the source distribution. If you click on the Download button for a particular build, you will have four options:


ScienceTools-09-16-01

  
Download

 User Download

 Devel Download

 Source Download

 Externals Download

	Variant	Start Time	Stop Time
	Debug	2010-04-05 11:32:36	2010-04-05 12:28:15
	Optimized	2010-04-05 11:32:37	2010-04-05 12:25:13

	Start Time	Stop Time
Checkout	2010-04-05 11:33:14	2010-04-05 11:37:28
Compile	2010-04-05 11:38:16	2010-04-05 12:10:13
Test	2010-04-05 12:15:10	2010-04-05 12:24:32
Build Location	/nfs/farm/g/glast/u35/ReleaseManagerBuild/redhat4-i686-32bit-gcc34/Optir	
SCons Location	/afs/slac/g/glast/applications/SCons/1.2.0.d20090919/bin/scons	
Externals Location	/afs/slac/g/glast/ground/GLAST_EXT/redhat4-i686-32bit-gcc34	
User Release Location	/nfs/farm/g/glast/u35/ReleaseManagerBuild/redhat4-i686-32bit-gcc34/Optir	
Devel Release Location	/nfs/farm/g/glast/u35/ReleaseManagerBuild/redhat4-i686-32bit-gcc34/Optir	
Source Release Location	/nfs/farm/g/glast/u35/ReleaseManagerBuild/redhat4-i686-32bit-gcc34/Optir	

Choose one, and a download will be started. Please note that if something goes wrong and RMViewer is unable to perform the download for you, you can make note of the location of the files as indicated in the window (i.e. User Release Location in /nfs/farm/g/glast/u35/..) and grab the file yourself.