

Creating a new LCSIM project using a maven2 archetype

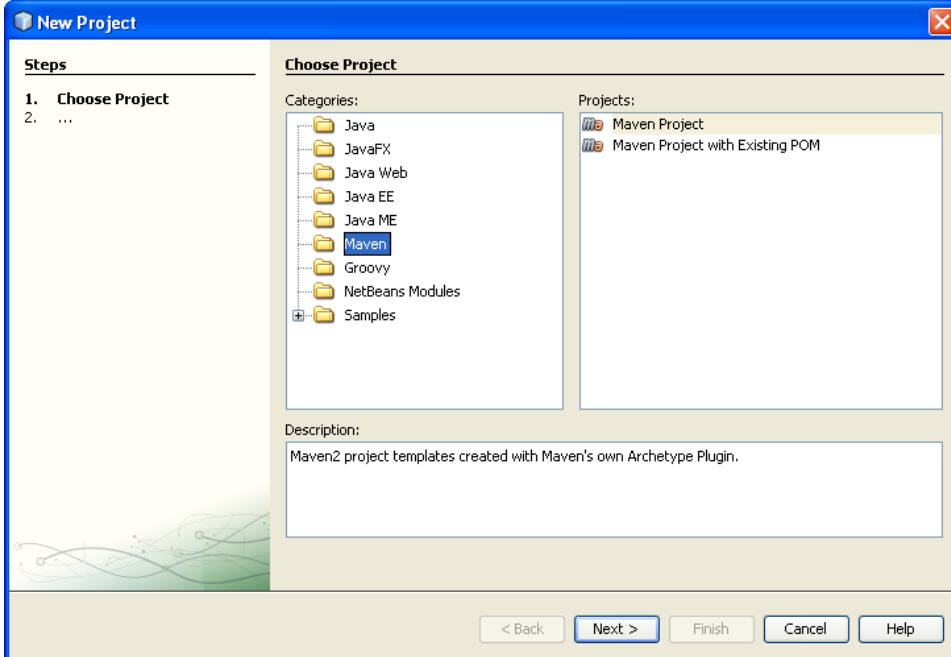
This page describes how to easily create a new project which uses the org.lcsim analysis/reconstruction framework. This method makes use of a maven2 archetype, which automates the process of creating a new project from scratch. The maven2 archetype can be used either from within Netbeans or from the command line.

- [Creating a new LCSIM project using Netbeans \(6.5 or later\)](#)
- [Creating a new LCSIM project from the command line](#)
- [Care and feeding of the lcsim-example-archetype](#)

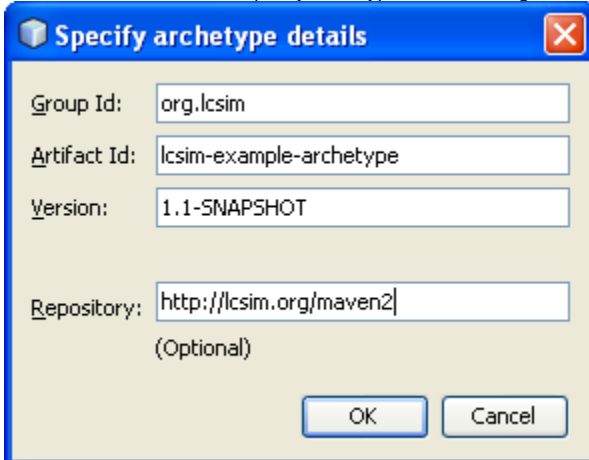
Creating a new LCSIM project using Netbeans (6.5 or later)

I assume you have already [installed netbeans 6.5 and the maven plugin](#).

- From the Netbeans menu Choose *File, New Project*. Then select *Maven, Maven Project*, click *Next>*

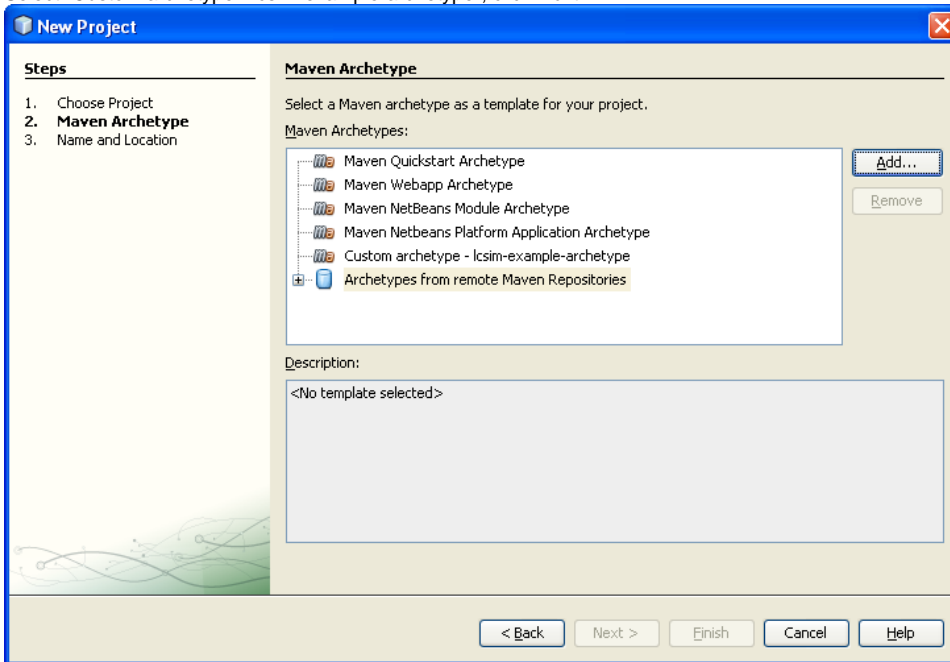


- Click *Add...* then fill in the "Specify archetype details" dialog as shown:



- and click *OK*.

- Select "Custom archetype - lcsim-example-archetype", click *Next*>

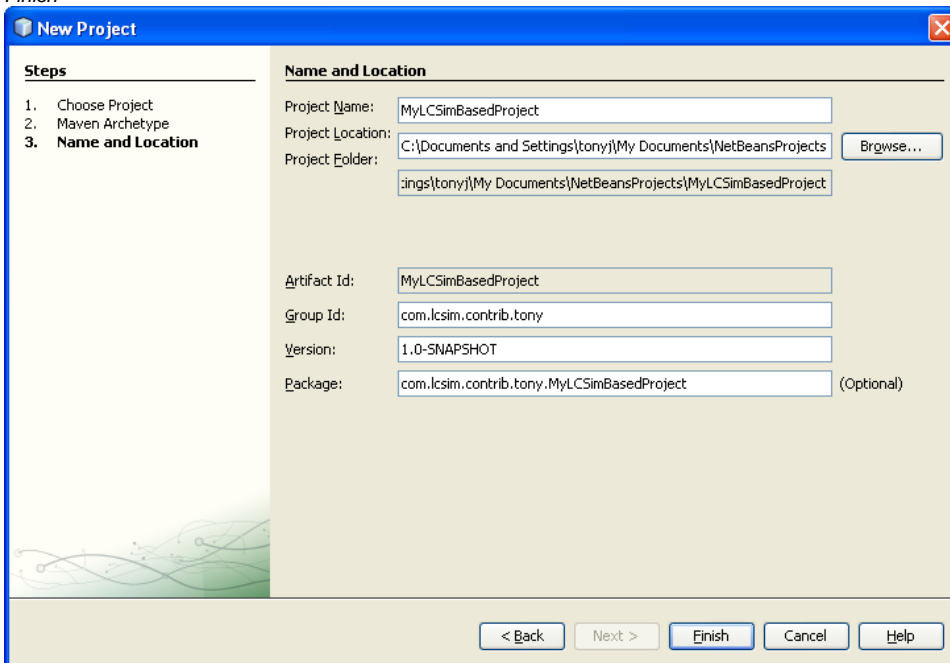


The "New Project" dialog is shown at the "Maven Archetype" step. The "Steps" list on the left shows: 1. Choose Project, 2. **Maven Archetype**, 3. Name and Location. The main area is titled "Maven Archetype" and contains the instruction "Select a Maven archetype as a template for your project." Below this is a list of "Maven Archetypes":

- Maven Quickstart Archetype
- Maven Webapp Archetype
- Maven NetBeans Module Archetype
- Maven NetBeans Platform Application Archetype
- Custom archetype - lcsim-example-archetype
- Archetypes from remote Maven Repositories

Buttons "Add..." and "Remove" are to the right of the list. Below the list is a "Description:" field containing "<No template selected>". At the bottom are buttons: "< Back", "Next >", "Finish", "Cancel", and "Help".

- Fill in the form, choosing a project name, and replacing com.mycompany with your own package name (for example org.lcsim.contrib.tony). Click *Finish*

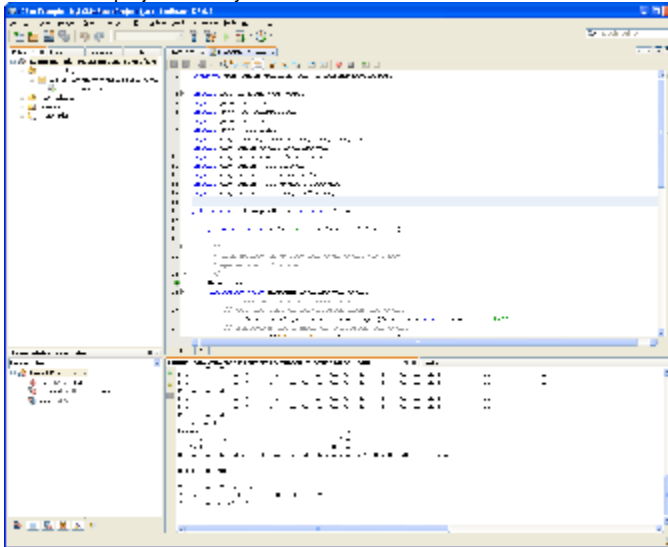


The "New Project" dialog is shown at the "Name and Location" step. The "Steps" list on the left shows: 1. Choose Project, 2. Maven Archetype, 3. **Name and Location**. The main area is titled "Name and Location" and contains the following fields:

- Project Name: MyLCSimBasedProject
- Project Location: C:\Documents and Settings\tony\My Documents\NetBeansProjects (with a "Browse..." button)
- Project Folder: :ings\tony\My Documents\NetBeansProjects\MyLCSimBasedProject
- Artifact Id: MyLCSimBasedProject
- Group Id: com.lcsim.contrib.tony
- Version: 1.0-SNAPSHOT
- Package: com.lcsim.contrib.tony.MyLCSimBasedProject (Optional)

At the bottom are buttons: "< Back", "Next >", "Finish", "Cancel", and "Help".

- Netbeans should open your project. You should immediately be able to build and then run it. Now just started editing the ExampleDriver.java file to make the project do as you like.



Creating a new LCSIM project from the command line

Issue the following commands:

```
mvn archetype:create -DarchetypeGroupId=org.lcsim -DarchetypeArtifactId=lcsim-example-archetype -
-DarchetypeVersion=1.1-SNAPSHOT -DgroupId=org.lcsim.contrib.tony -DartifactId=MyLCSimBasedProject -
-DremoteRepositories=http://lcsim.org/maven2
cd MyLCSimBasedProject
mvn install
```

It is not currently possible to run the project from the command line, but Jeremy could probably fix that.

Care and feeding of the lcsim-example-archetype

The lcsim-example-archetype is itself a maven project which lives in CVS as module lcsim-example-archetype. The built-in version numbers will need to be updated, and the project re-deployed, when we make a new lcsim release.