

# RF Commissioning

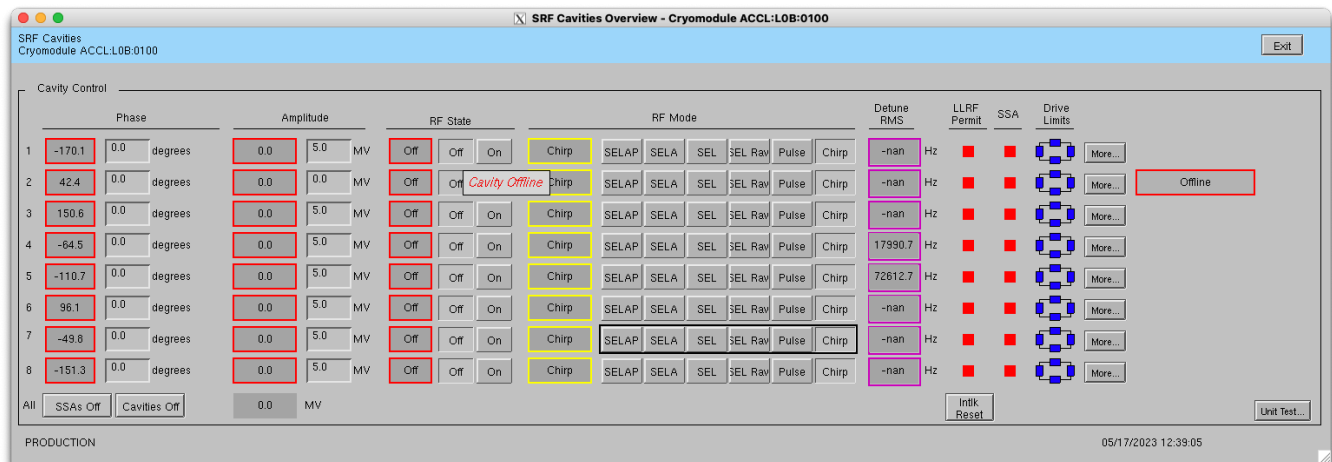
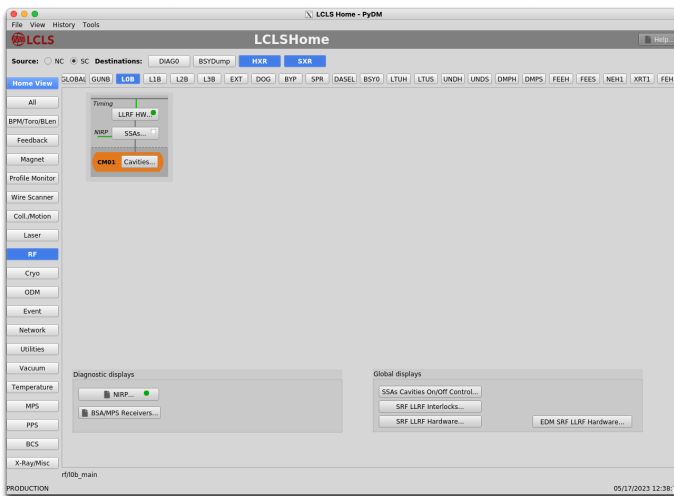
- [EPICS Screens](#)
- [GUI Procedure](#)
  - [Piezo Pre-RF Check](#)
  - [SSA Characterization](#)
  - [Cavity Tuning](#)
  - [8/9 and 7/9](#)
  - [Cavity Characterization](#)
  - [Piezo With RF](#)
  - [Ramp Up in SELAP](#)



Source code can be found [here](#) and can be run locally using [Local PyDM/Simulacrum Setup](#)

## EPICS Screens

All screens for any given cavity can be gotten from either lcls-home (using SC gun) or SRF Home > RF > Cavities > More

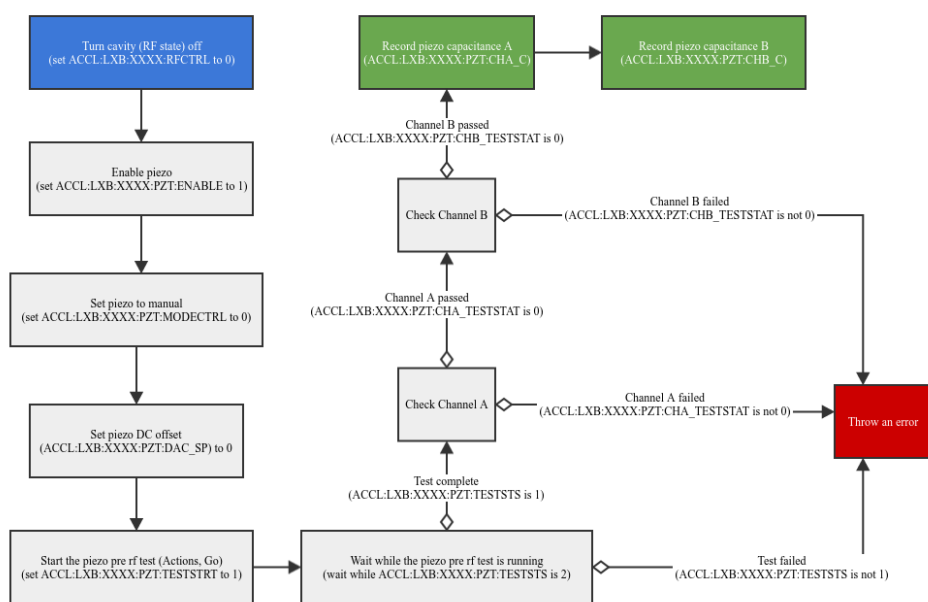


## GUI Procedure

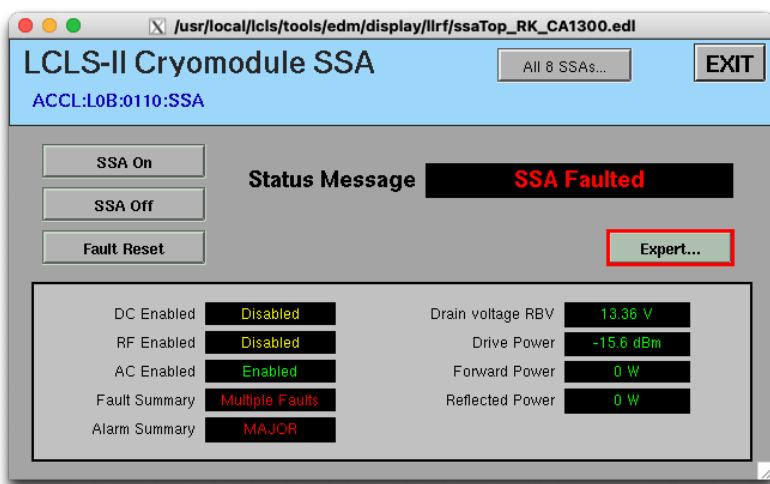
**i** Blue is start, red is error, green is end, yellow is special case.

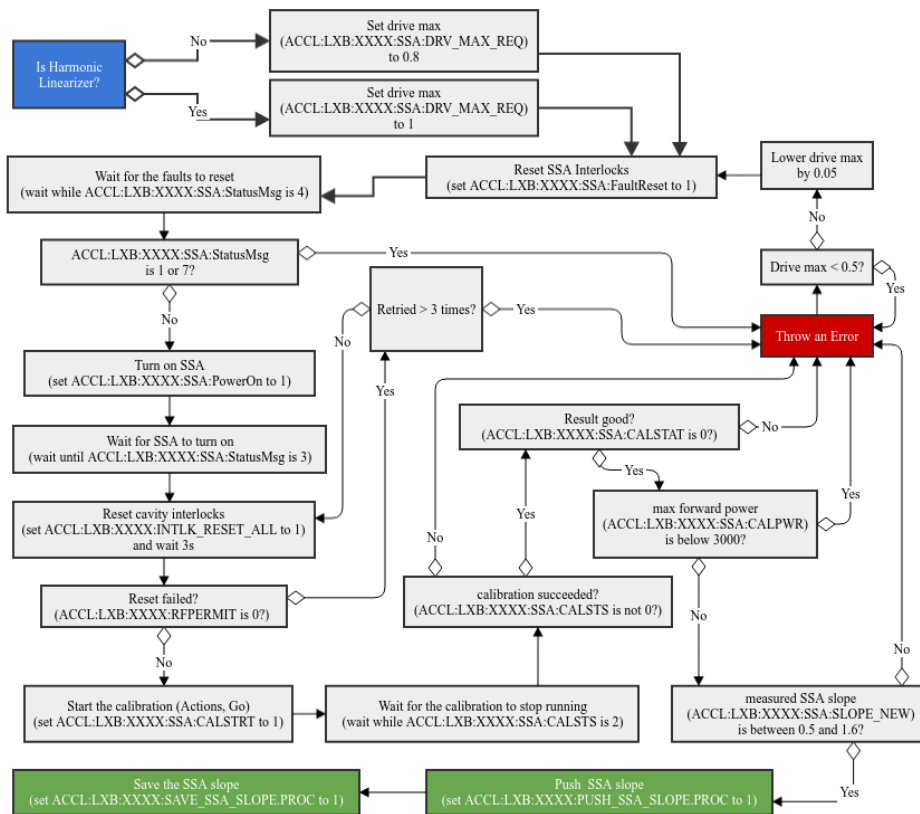
Arrow with a diamond means conditional.

## Piezo Pre-RF Check

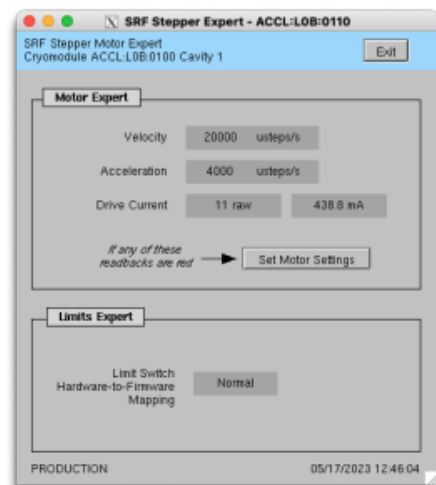
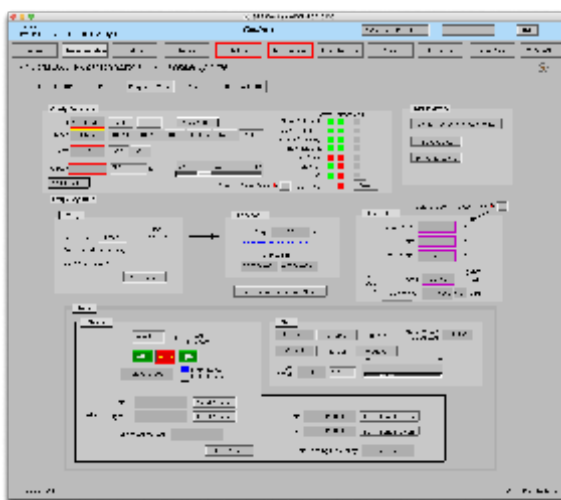


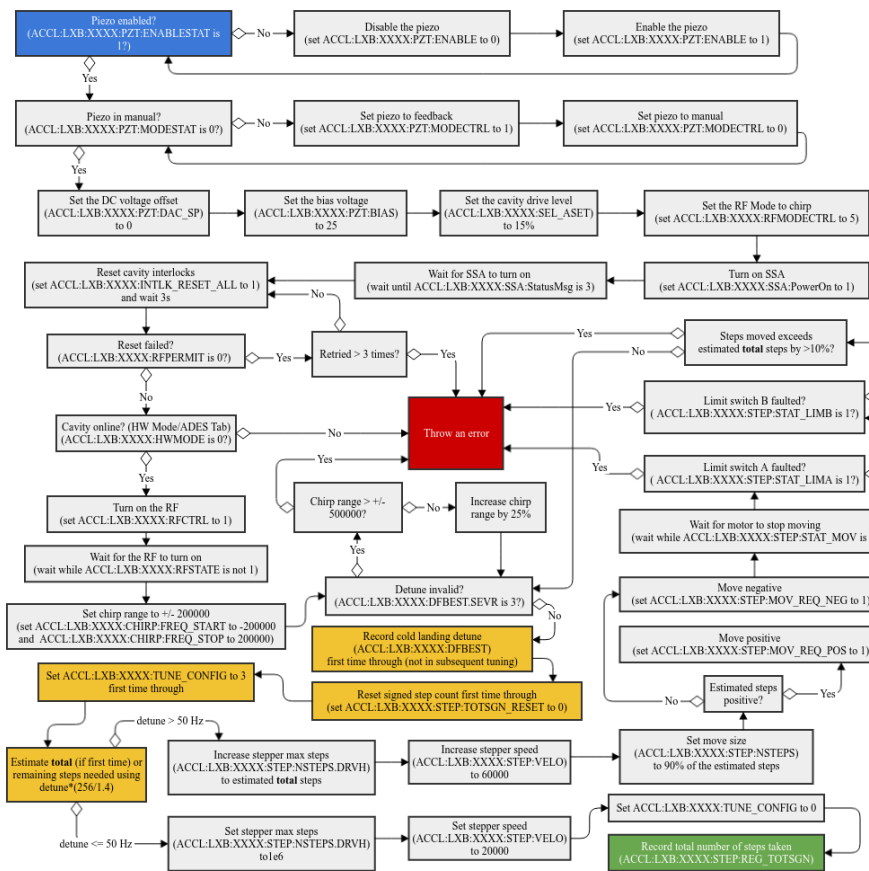
## SSA Characterization



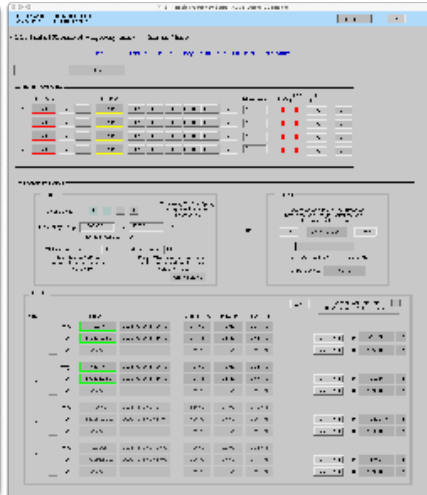


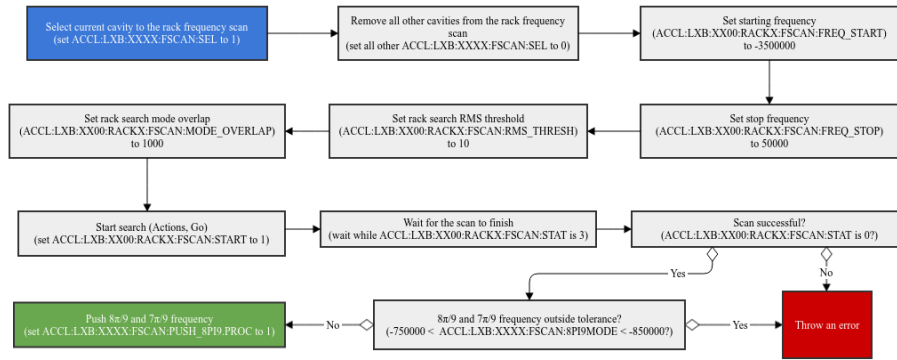
## Cavity Tuning



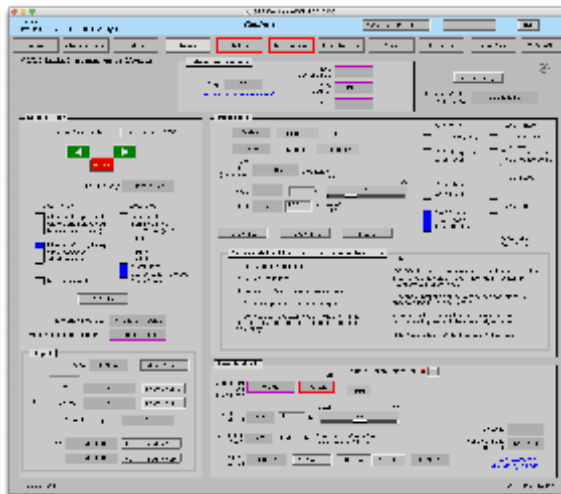
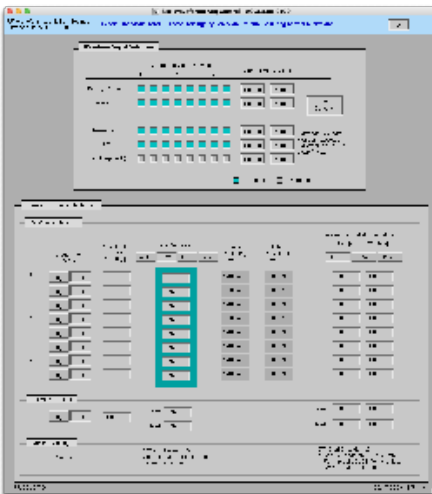
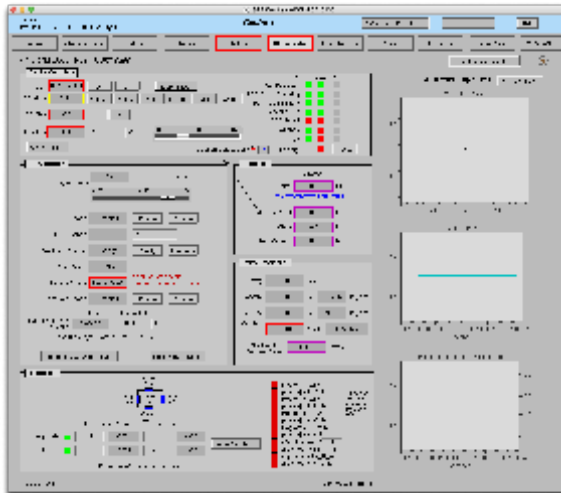


8/9 and 7/9

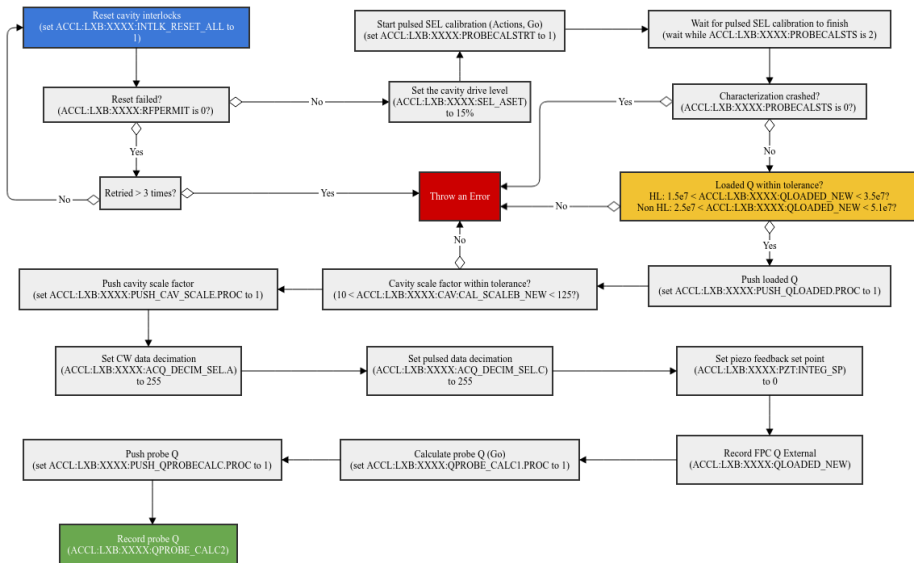




## Cavity Characterization

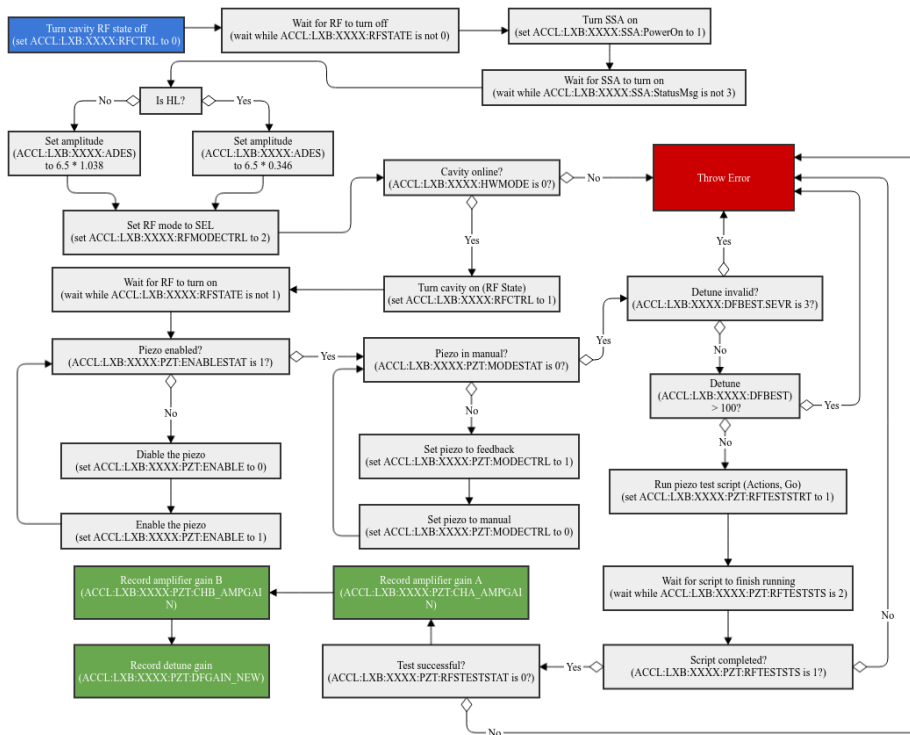






## Piezo With RF





## Ramp Up in SELAP

