

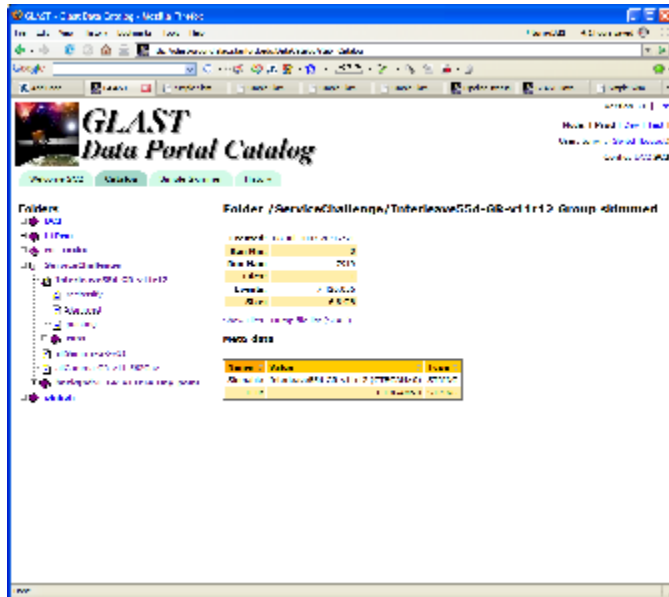
SC Steering, July 18

Current Status

Data portal is available at: <http://glast-ground.slac.stanford.edu/DataPortal/>

Includes Data Catalog, Simple Skimmer, (download) History

- Data catalog



- Simple Skimmer

The screenshot shows the GLAST Data Portal interface. At the top, there's a header with the GLAST logo and navigation links like 'Home', 'About', 'Data', 'Tools', and 'Help'. Below the header, there's a section titled 'Full History' which contains a table of data records. The table has columns for 'Dataset ID', 'Name', 'Type', 'Status', 'Created Time', 'Last Modified', and 'Action'. The data rows are listed in a table with alternating yellow and white background colors.

Dataset ID	Name	Type	Status	Created Time	Last Modified	Action
GLAST-001	1J0010.0-0000.0	Point Source	Active	2004-01-01 00:00:00	2004-01-01 00:00:00	View Details
GLAST-002	1J0010.0-0000.0	Point Source	Active	2004-01-01 00:00:00	2004-01-01 00:00:00	View Details
GLAST-003	1J0010.0-0000.0	Point Source	Active	2004-01-01 00:00:00	2004-01-01 00:00:00	View Details
GLAST-004	1J0010.0-0000.0	Point Source	Active	2004-01-01 00:00:00	2004-01-01 00:00:00	View Details
GLAST-005	1J0010.0-0000.0	Point Source	Active	2004-01-01 00:00:00	2004-01-01 00:00:00	View Details
GLAST-006	1J0010.0-0000.0	Point Source	Active	2004-01-01 00:00:00	2004-01-01 00:00:00	View Details
GLAST-007	1J0010.0-0000.0	Point Source	Active	2004-01-01 00:00:00	2004-01-01 00:00:00	View Details
GLAST-008	1J0010.0-0000.0	Point Source	Active	2004-01-01 00:00:00	2004-01-01 00:00:00	View Details
GLAST-009	1J0010.0-0000.0	Point Source	Active	2004-01-01 00:00:00	2004-01-01 00:00:00	View Details
GLAST-010	1J0010.0-0000.0	Point Source	Active	2004-01-01 00:00:00	2004-01-01 00:00:00	View Details
GLAST-011	1J0010.0-0000.0	Point Source	Active	2004-01-01 00:00:00	2004-01-01 00:00:00	View Details
GLAST-012	1J0010.0-0000.0	Point Source	Active	2004-01-01 00:00:00	2004-01-01 00:00:00	View Details
GLAST-013	1J0010.0-0000.0	Point Source	Active	2004-01-01 00:00:00	2004-01-01 00:00:00	View Details
GLAST-014	1J0010.0-0000.0	Point Source	Active	2004-01-01 00:00:00	2004-01-01 00:00:00	View Details
GLAST-015	1J0010.0-0000.0	Point Source	Active	2004-01-01 00:00:00	2004-01-01 00:00:00	View Details
GLAST-016	1J0010.0-0000.0	Point Source	Active	2004-01-01 00:00:00	2004-01-01 00:00:00	View Details
GLAST-017	1J0010.0-0000.0	Point Source	Active	2004-01-01 00:00:00	2004-01-01 00:00:00	View Details
GLAST-018	1J0010.0-0000.0	Point Source	Active	2004-01-01 00:00:00	2004-01-01 00:00:00	View Details
GLAST-019	1J0010.0-0000.0	Point Source	Active	2004-01-01 00:00:00	2004-01-01 00:00:00	View Details
GLAST-020	1J0010.0-0000.0	Point Source	Active	2004-01-01 00:00:00	2004-01-01 00:00:00	View Details
GLAST-021	1J0010.0-0000.0	Point Source	Active	2004-01-01 00:00:00	2004-01-01 00:00:00	View Details
GLAST-022	1J0010.0-0000.0	Point Source	Active	2004-01-01 00:00:00	2004-01-01 00:00:00	View Details
GLAST-023	1J0010.0-0000.0	Point Source	Active	2004-01-01 00:00:00	2004-01-01 00:00:00	View Details
GLAST-024	1J0010.0-0000.0	Point Source	Active	2004-01-01 00:00:00	2004-01-01 00:00:00	View Details
GLAST-025	1J0010.0-0000.0	Point Source	Active	2004-01-01 00:00:00	2004-01-01 00:00:00	View Details
GLAST-026	1J0010.0-0000.0	Point Source	Active	2004-01-01 00:00:00	2004-01-01 00:00:00	View Details
GLAST-027	1J0010.0-0000.0	Point Source	Active	2004-01-01 00:00:00	2004-01-01 00:00:00	View Details
GLAST-028	1J0010.0-0000.0	Point Source	Active	2004-01-01 00:00:00	2004-01-01 00:00:00	View Details
GLAST-029	1J0010.0-0000.0	Point Source	Active	2004-01-01 00:00:00	2004-01-01 00:00:00	View Details
GLAST-030	1J0010.0-0000.0	Point Source	Active	2004-01-01 00:00:00	2004-01-01 00:00:00	View Details
GLAST-031	1J0010.0-0000.0	Point Source	Active	2004-01-01 00:00:00	2004-01-01 00:00:00	View Details
GLAST-032	1J0010.0-0000.0	Point Source	Active	2004-01-01 00:00:00	2004-01-01 00:00:00	View Details
GLAST-033	1J0010.0-0000.0	Point Source	Active	2004-01-01 00:00:00	2004-01-01 00:00:00	View Details
GLAST-034	1J0010.0-0000.0	Point Source	Active	2004-01-01 00:00:00	2004-01-01 00:00:00	View Details
GLAST-035	1J0010.0-0000.0	Point Source	Active	2004-01-01 00:00:00	2004-01-01 00:00:00	View Details
GLAST-036	1J0010.0-0000.0	Point Source	Active	2004-01-01 00:00:00	2004-01-01 00:00:00	View Details
GLAST-037	1J0010.0-0000.0	Point Source	Active	2004-01-01 00:00:00	2004-01-01 00:00:00	View Details
GLAST-038	1J0010.0-0000.0	Point Source	Active	2004-01-01 00:00:00	2004-01-01 00:00:00	View Details
GLAST-039	1J0010.0-0000.0	Point Source	Active	2004-01-01 00:00:00	2004-01-01 00:00:00	View Details
GLAST-040	1J0010.0-0000.0	Point Source	Active	2004-01-01 00:00:00	2004-01-01 00:00:00	View Details
GLAST-041	1J0010.0-0000.0	Point Source	Active	2004-01-01 00:00:00	2004-01-01 00:00:00	View Details
GLAST-042	1J0010.0-0000.0	Point Source	Active	2004-01-01 00:00:00	2004-01-01 00:00:00	View Details
GLAST-043	1J0010.0-0000.0	Point Source	Active	2004-01-01 00:00:00	2004-01-01 00:00:00	View Details
GLAST-044	1J0010.0-0000.0	Point Source	Active	2004-01-01 00:00:00	2004-01-01 00:00:00	View Details
GLAST-045	1J0010.0-0000.0	Point Source	Active	2004-01-01 00:00:00	2004-01-01 00:00:00	View Details
GLAST-046	1J0010.0-0000.0	Point Source	Active	2004-01-01 00:00:00	2004-01-01 00:00:00	View Details
GLAST-047	1J0010.0-0000.0	Point Source	Active	2004-01-01 00:00:00	2004-01-01 00:00:00	View Details
GLAST-048	1J0010.0-0000.0	Point Source	Active	2004-01-01 00:00:00	2004-01-01 00:00:00	View Details
GLAST-049	1J0010.0-0000.0	Point Source	Active	2004-01-01 00:00:00	2004-01-01 00:00:00	View Details
GLAST-050	1J0010.0-0000.0	Point Source	Active	2004-01-01 00:00:00	2004-01-01 00:00:00	View Details

Coming later today

- New version of simple skimmer
 - Updated to use David Chamont's latest skimmer backend
 - Can produce fits files as well as root files
 - Can skim any merit tuple from data catalog
 - Can limit size of output file
- New version of data catalog
 - Allows filtering to show only data tagged as config=SC2
 - "Skim this dataset" links next to all merit tuples

Coming soon

- Astro server integrated into data portal
- WIRED integrated into data portal