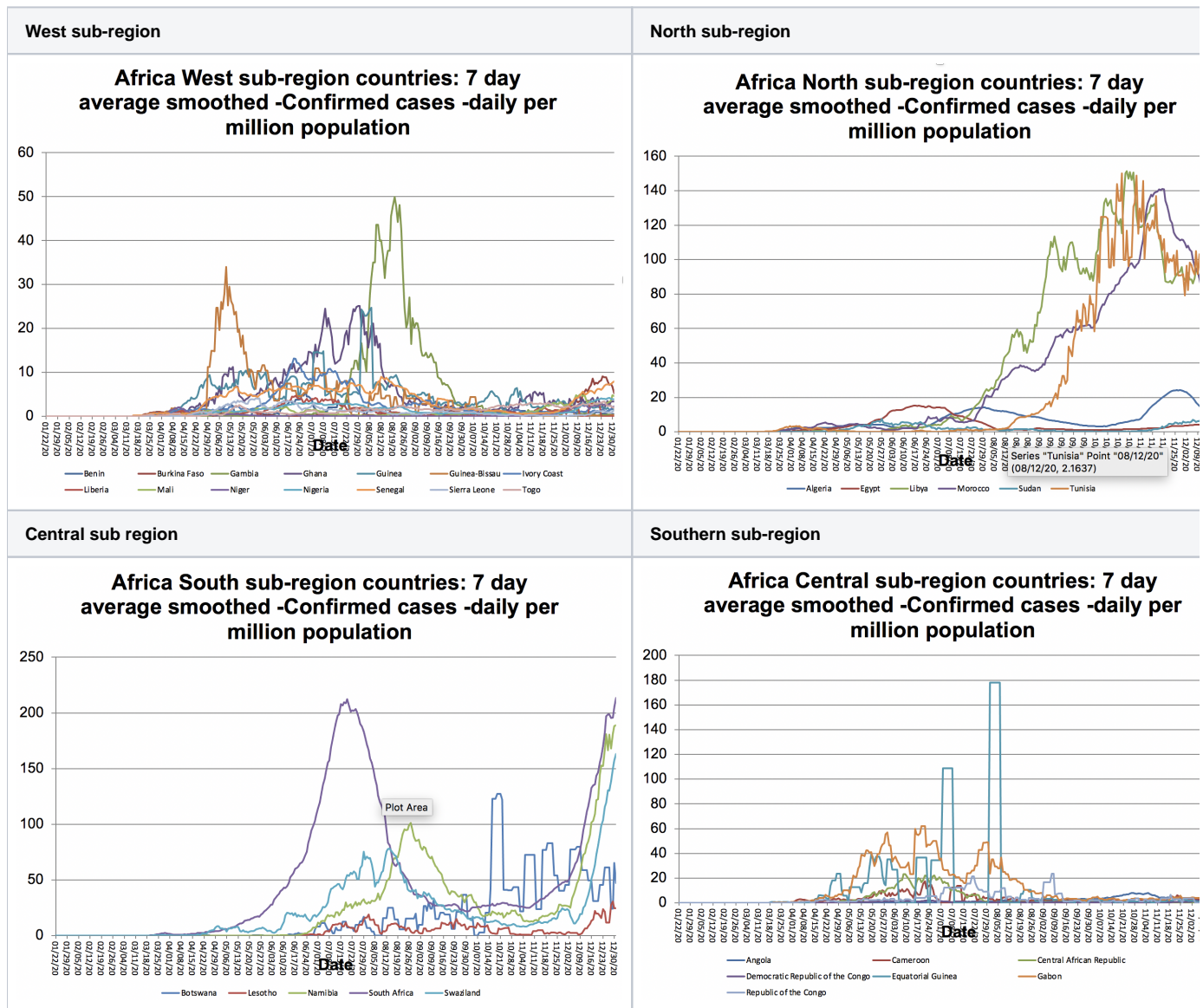


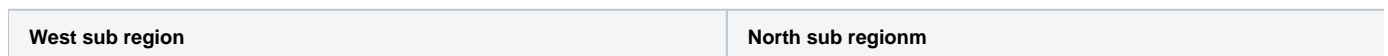
# Africa

We divide Africa into sub regions to enable easier discrimination of each country's cases.

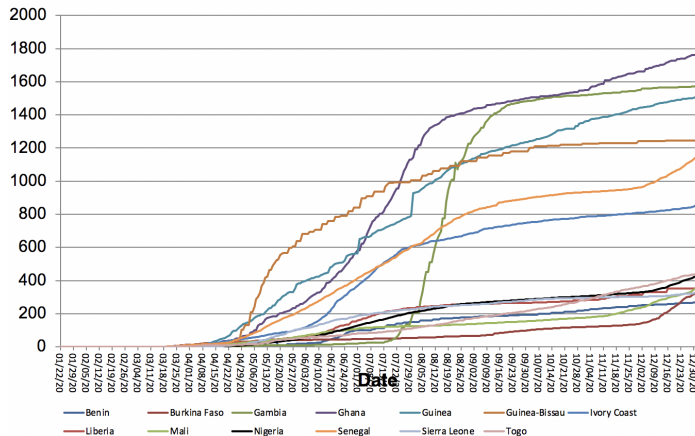
First we plot the daily smoothed confirmed cases:



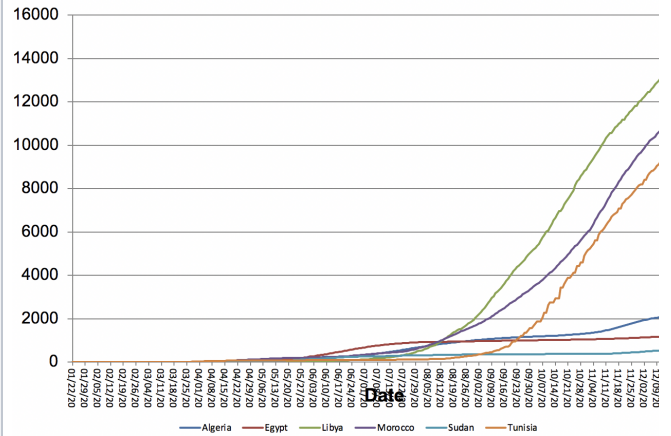
Moving on below are the cumulative cases



**Africa West sub-region countries: -Confirmed cases -cumulative per million population**

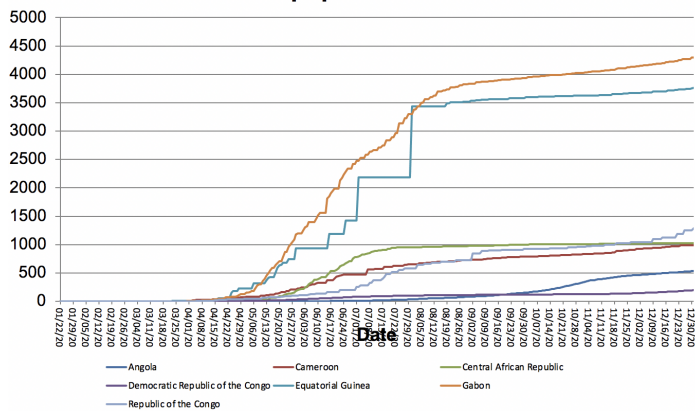


**Africa North sub-region countries: -Confirmed cases -cumulative per million population**



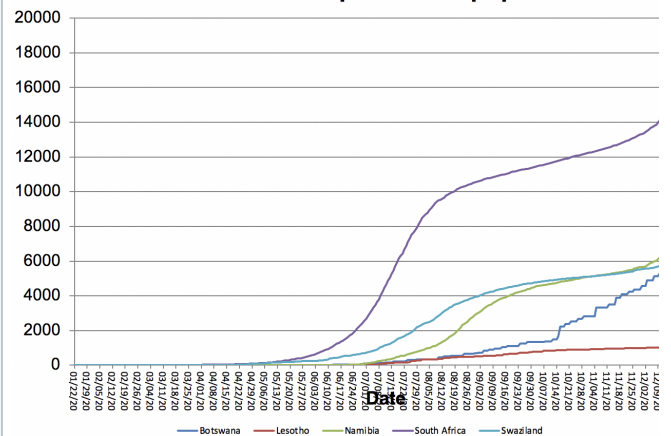
**Central sub region**

**Africa Central sub-region countries: -Confirmed cases -cumulative per million population**



**Southern sub reion**

**Africa South sub-region countries: -Confirmed cases -cumulative per million population**



Finally we show the cumulative deaths for countries with the most cumulative cases per million population.

**Africa countries with most cases: -Deaths -cumulative per million population**

