

NoMachine Physical Desktop

Minimum System Requirements

A single 4k (3840 x 2160) display requires ~20 Mbps of download speed to support a 1Hz refresh rate. *This may vary depending on the number of high-definition or rapidly changing UI elements being displayed.* The upload requirements are minimal for control, but may limit speed of file transfers from the client to the host.

Availability

xpp-daq	xpp-control
xcs-daq	
mfx-daq	mfx-monitor
cxi-daq	
mec-daq	mec-monitor
tmo-daq	tmo-monitor

Installation and Use:



To support remote operations a dedicated NoMachine Terminal Server has been deployed: psnxopr.slac.stanford.edu.

Then, NoMachine Enterprise Desktop will be installed on all DAQ workstations.

The following link provides guidelines to configure NoMachine Client: [Remote Visualization](#).

1.



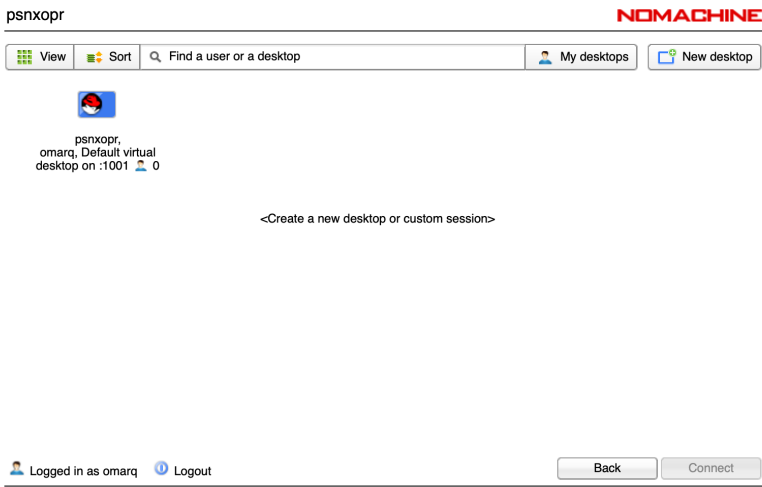
To support remote operations a dedicated NoMachine Terminal Server has been deployed: psnxopr.slac.stanford.edu.

Then, NoMachine Enterprise Desktop will be installed on all DAQ workstations.

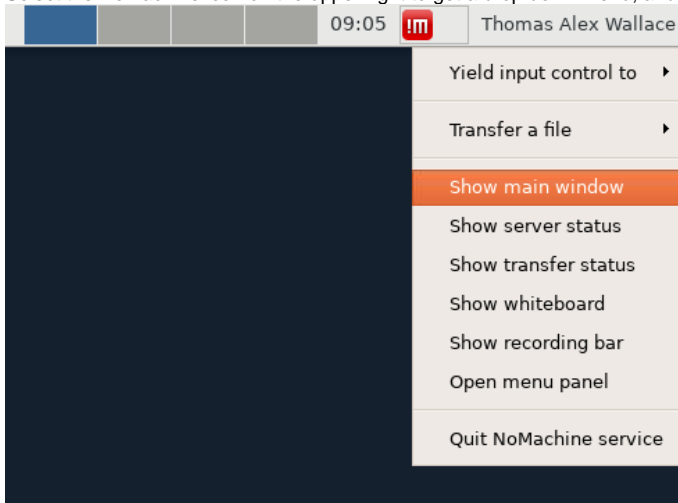
The following link provides guidelines to configure NoMachine Client: [Remote Visualization](#).

To access the DAQ workstation, use the following steps:

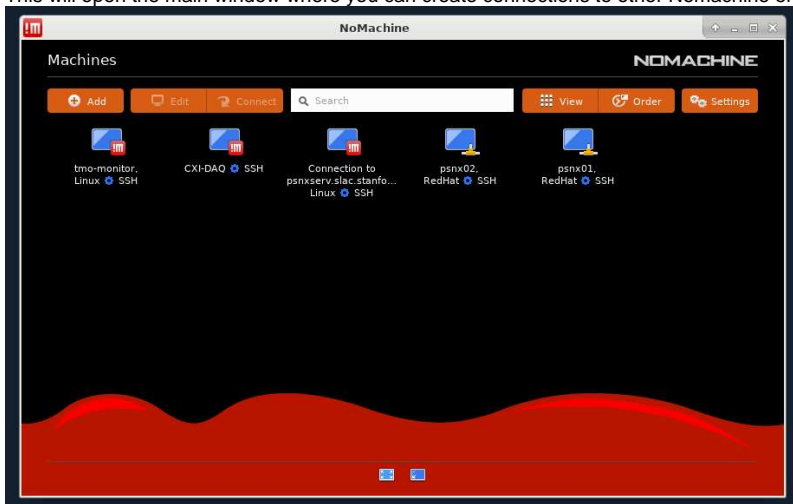
- a. Access or create a new desktop session.



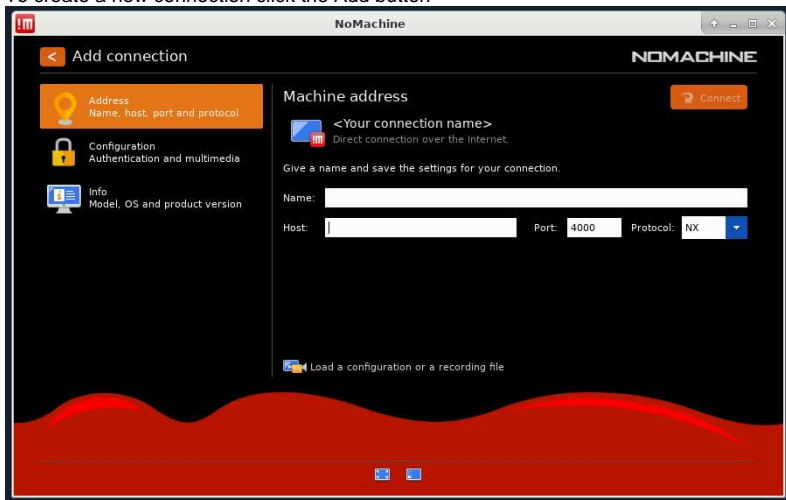
- b. Select the NoMachine icon on the upper right to get a drop down menu, and select "Show main window"



- c. This will open the main window where you can create connections to other Nomachine enabled machines



- d. To create a new connection click the Add button



- e. Enter the network hostname in the host field, give it a legible name you will remember in the name field, and select SSH (NOT NX) in the **protocol** field
f. Now click connect

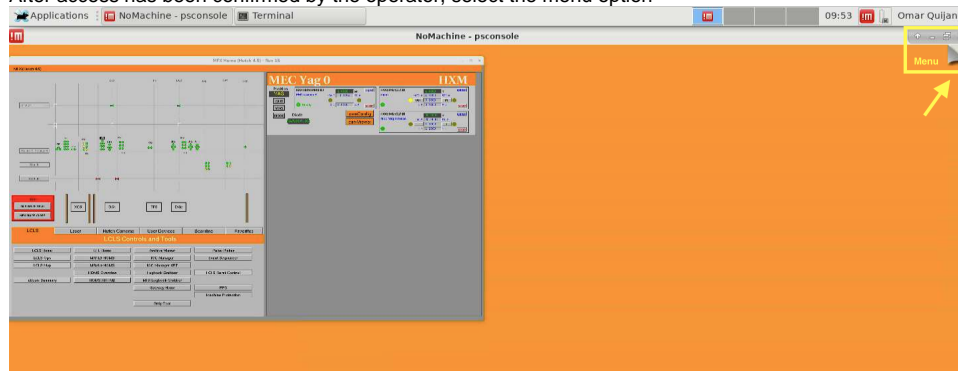
g. A new window requesting login access will appear



h. After login, someone physically at the machine will have to grant authorization for view-only mode on a selected or default monitor.

i. As the remote user, any display can be accessed

ii. After access has been confirmed by the operator, select the menu option



ii. On the menu screen, select change monitor icon



iii. Then select the monitor to visualize its displayed content or All to see all monitors. (This setup has only 3 monitors)

