

CSPAD geometry in mecj5515

Data

- /reg/d/psdm/mec/mecj5515/xtc - data for runs 1-340 taken from December 2, 2015 to January 4, 2016.
- Runs 128, 129 were taken on December 14, 2015

Metrology and geometry

As posted on <https://confluence.slac.stanford.edu/display/PSDM/CSPad+alignment#CSPADAlignment-MEC>

metrology measurements for MecTargetChamber.0:Cspad.0 was done on

- 2015-06-08 for quad0 (quads 1 and 2 were not available)
- 2016-02-16 for quad0-2 (recommended to use for later dates)

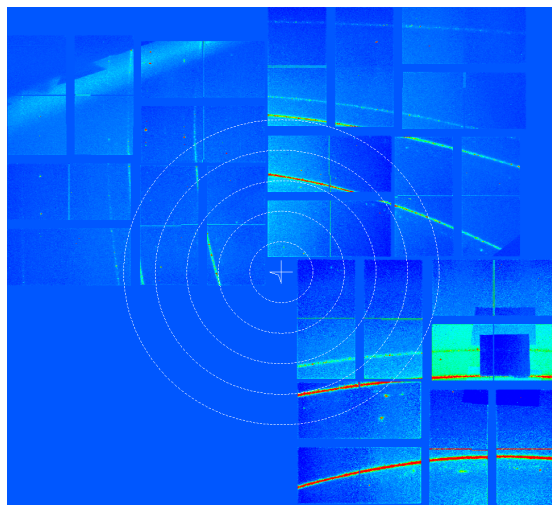
In mecj5515 metrology from 2015-06-08 for quad 0 is used also for quads 1 and 2.

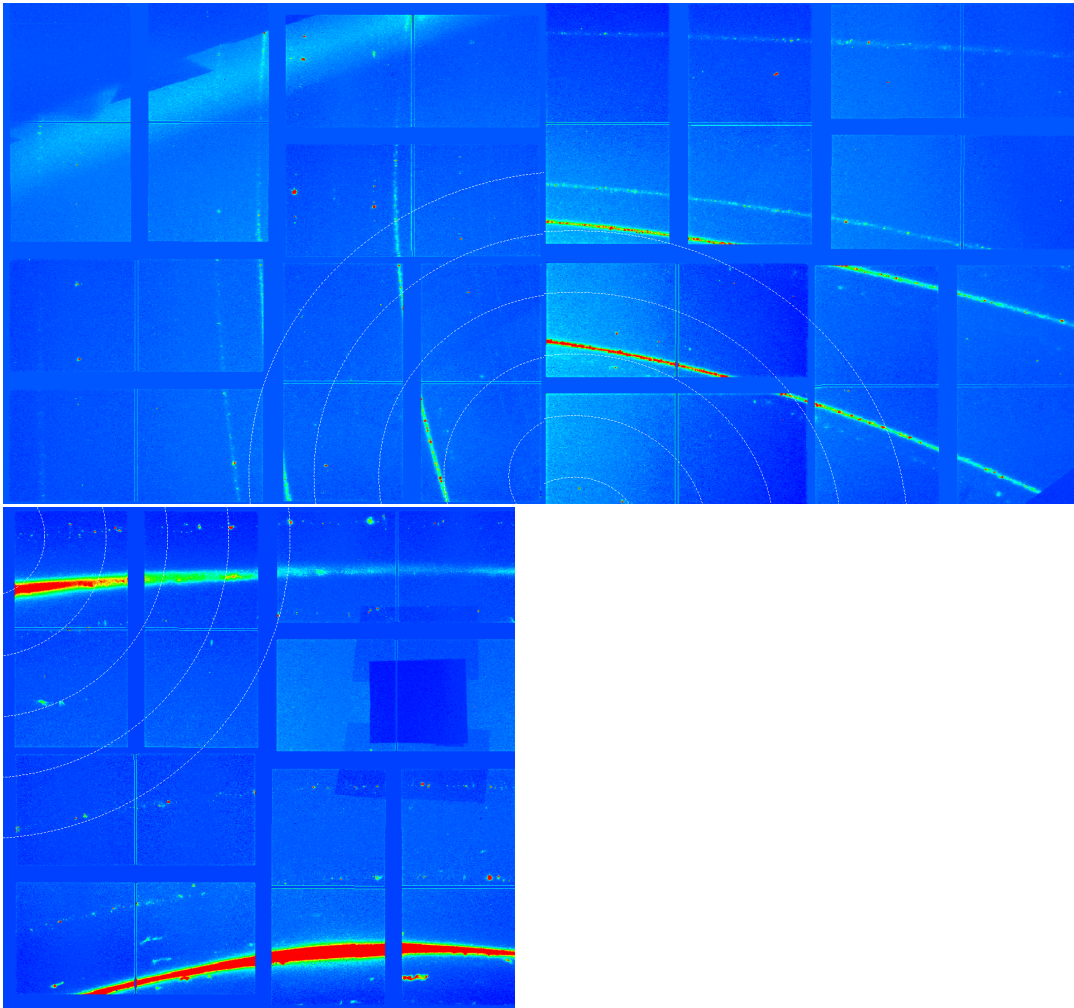
Plots

use

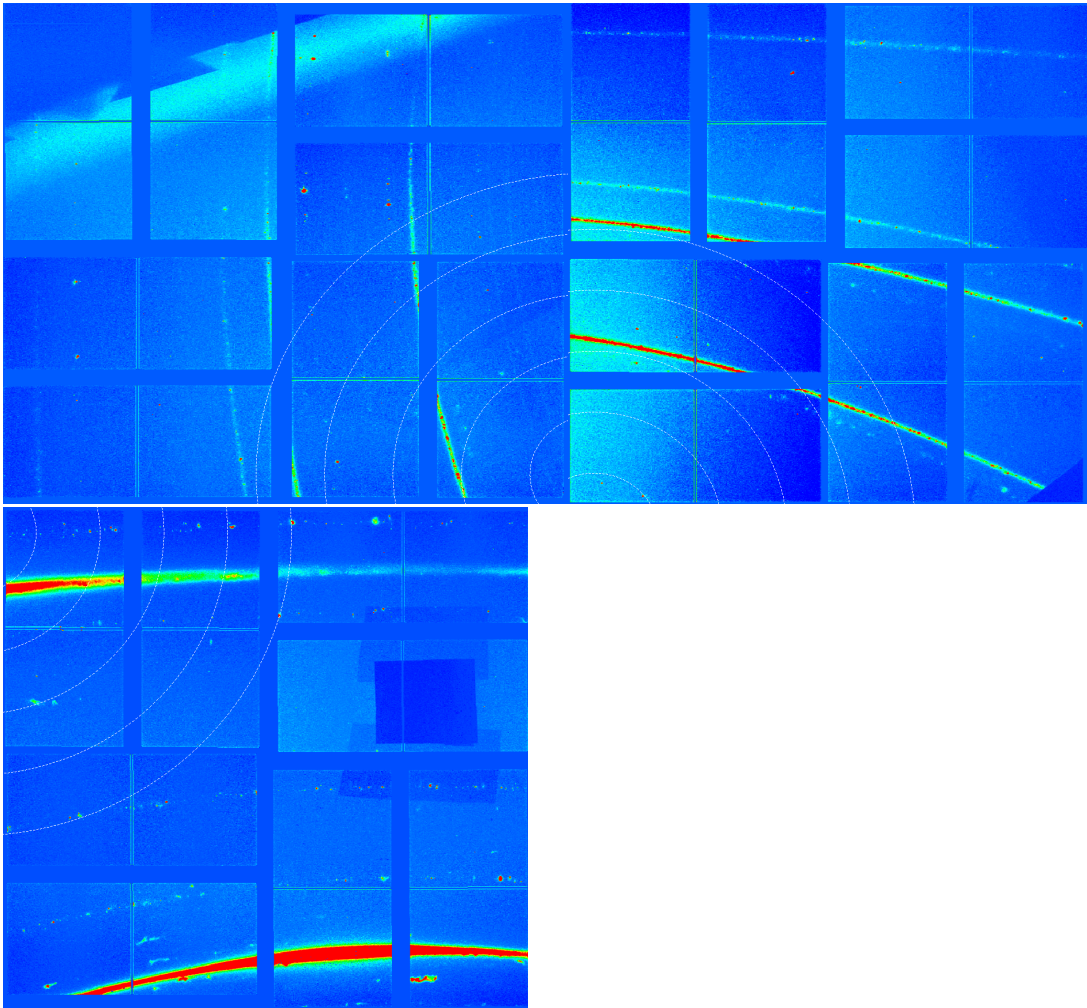
- exp=mecj5515:run=128 for quad0,1
- exp=mecj5515:run=129 for quad2

Images for cspad and quads 0,1,2 using 2015-06-08 metrology





Images for cspad and quads 0,1,2 using 2015-02-16 metrology



Summary

- For mecj5515 metrology for quads 1 and 2 is unavailable.
- metrology from 2015-06-08 for quad 0 is used also for quads 1 and 2.
- It is not clear if metrology from 2015-02-16 works better.