



# Maven

## Install Maven

Download the stable version of maven (1.0.2) from <http://maven.apache.org/maven-1.x/start/download.html>.

 Before installing maven you must have already [installed Java 1.5](#).

 The version of Maven should be 1.0.2. The 1.1.x series has been found to be buggy. And the 2 release is incompatible with 1.x.

Install Maven by double-clicking on the downloaded file which should be called **maven-1.0.2.exe**.

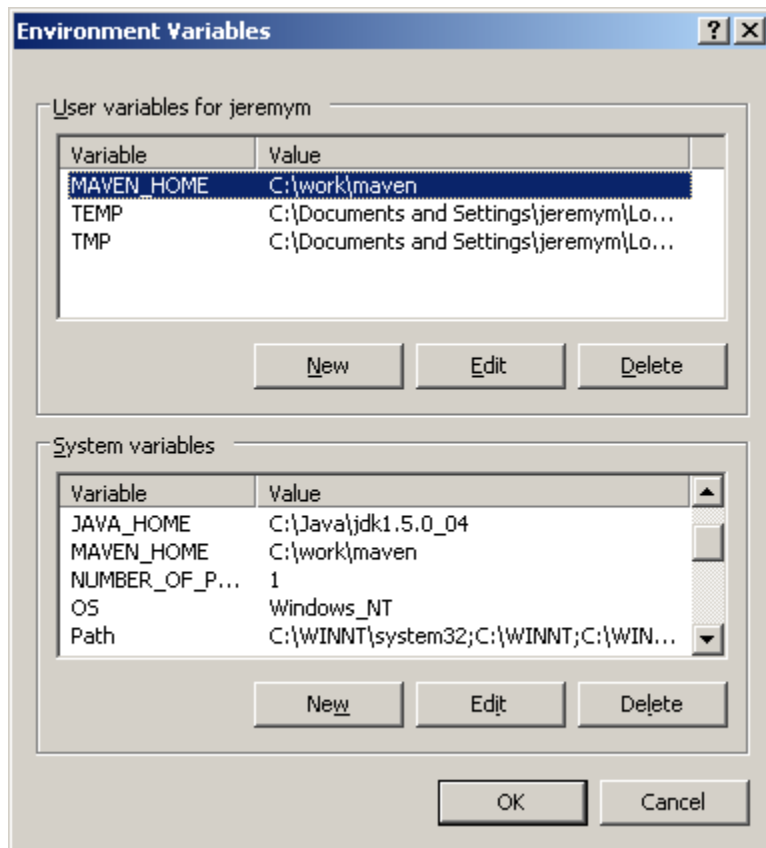
If `JAVA_HOME` is not set, an error will occur.

You can set the path to Java home from the **Start -> Settings -> Control Panel -> System** menu.

Click on the **Advanced** tab and then click the **Environment Variables** button.

Click "New" to add a new variable.

## Environment Variable Menu

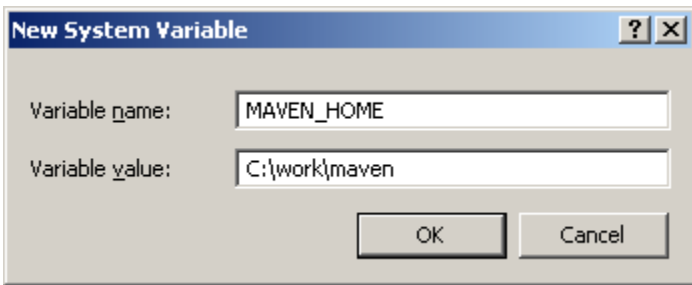


After installation, also set the MAVEN\_HOME variable to point to the base installation area.

My installation dir is C:\work\maven.

Click on the "New" button under the "System Variables" box.

Copy the value from the Explorer bar into the new variable.

A Windows dialog box titled "New System Variable". It has a blue title bar with a question mark icon and a close button. The dialog contains two text input fields. The first is labeled "Variable name:" and contains the text "MAVEN\_HOME". The second is labeled "Variable value:" and contains the text "C:\work\maven". At the bottom right, there are two buttons: "OK" and "Cancel".

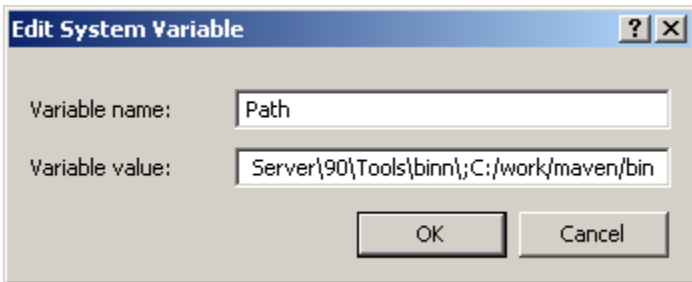
New System Variable

Variable name: MAVEN\_HOME

Variable value: C:\work\maven

OK Cancel

You will also have to add the bin directory of the maven installation to your PATH environment variable:

A Windows dialog box titled "Edit System Variable". It has a blue title bar with a question mark icon and a close button. The dialog contains two text input fields. The first is labeled "Variable name:" and contains the text "Path". The second is labeled "Variable value:" and contains the text "Server\90\Tools\binn\;C:/work/maven/bin". At the bottom right, there are two buttons: "OK" and "Cancel".

Edit System Variable

Variable name: Path

Variable value: Server\90\Tools\binn\;C:/work/maven/bin

OK Cancel

Now, you should be able to use maven from the command line.

#### ✓ Symlinking the Cache Directory

On Unix, Maven will download many external jars to your home directory. This can be a problem if you have limited disk space. The easiest way to get around this problem is creating a symlink from an area where you have more space.

```
cd /scratch/  
mkdir .maven  
cd ~  
ln -s /scratch/.maven
```

Now the location on the scratch disk will hold the Maven downloads rather than the home directory.

#### ✓ Development tips for the [Maven](#) tool.