

# Mask Editor

Mask Editor is intended for interactive selection of good and bad regions on 2D image and preparation of output files with direct and inversed masks. It works as a basic graphical editor with specific input of the image and output for masks.

## Content

- [Content](#)
- [User Interface](#)
  - [Graphical window](#)
  - [Left control bar](#)
    - [Forms](#)
    - [Modes](#)
    - [I/O](#)
    - [Status panel](#)
  - [Bottom control bar](#)
- [How to run Mask Editor](#)
- [List of optional parameters](#)
- [Data format for geometrical forms](#)
- [File exchange mode](#)
  - [Image exchange with psana](#)
  - [Other file browser application](#)
- [Demonstration of features](#)
- [References](#)

## User Interface

User interface of the Mask Editor works in a single window containing three panels; graphical window, left-hand, and bottom control bars. Content and functionality of these panels is described below. Most of control buttons have tool tip hints; when cursor stops on control button, a pop-up window with explanation of functionality of this button appears for a few seconds .

## Graphical window

Graphical window contains image and spectrum. When cursor moves on image or spectrum, its coordinates are displayed near cursor. Cursor pattern is changed from "cross" to "pointing-finger" when it is located on active form boarder.

## Left control bar

Left control bar consists of stack of buttons, which are functionally split for four groups; Forms, Modes, I/O, and Status, which content and functionality is explained in this section.

## Forms

Forms are represented by the geometry objects Rectangle, Circle, Polygon, Wedge, and Line, which can be used to compose the mask positive and negative regions. All forms, except Polygon, are presented by two 2D points each in image coordinate system. Polygon is presented by the N 2D points, where N is a number of vertexes. All forms behave about the same way depending on Mode, as explained below.

## Modes

Panel of modes contain Zoom, Add, Move, Select, and Remove buttons with functionality literally explained by their names.

- **Zoom**  
Mode Zoom works for image and spectral limits.  
Zoom-in image: left mouse button click-drag-release for desired region of image.  
Set limits for spectrum: left/right mouse button click on desired min/max limit on spectrum.  
Reset to full size: middle mouse button click on image or spectral box or "Reset" button.
- **Add**  
Add is an input mode for forms.  
Input method for Rectangle, Circle, Wedge, and Line: in mode Add click-drag-release the left mouse button. Two points for each form are defined by the click and release positions of the mouse.  
Input method for Polygon: the N-1 points are entered by the left mouse button click, while the Nth point is indicated by the right mouse button click, which closes the polygon.
- **Move**  
Each form can be moved or edited in this mode;  
in mode Move choose the form, then use left/right mouse button click-drag-release on form boarder to move/edit the form.
- **Select**  
Forms can be used as regular "positive" for ROI, and inversed "negative" for blemish mask.  
Select button serves to switch between regular and inversed forms.  
In the Select mode choose the form, then use left mouse button click on form boarder. Form color is changed at selection/deselection.

- Remove  
In the Remove mode choose the form, then use any mouse button click on form boarder.  
As an alternative option, currently active form can be removed by the middle mouse button click on its boarder. The "Clear Forms" button from I/O section removes all forms.

## I/O

I/O panel contains a stack of buttons for input/output files and other global procedures as listed below.

- Load Image  
Loads and displays image from text file. The file name is selected through the standard pop-up dialog window.
- Load Forms  
Loads and displays forms from text file. The file name is selected through the standard pop-up dialog window.
- Save Forms  
Saves forms in text file. The file name is selected through the standard pop-up dialog window.
- Save Mask  
Saves "ROI" (positive) mask in text file. The file name is selected through the standard pop-up dialog window.
- Save inv-M(ask)  
Saves "blemish" (negative) mask in text file. The file name is selected through the standard pop-up dialog window.
- Print Forms  
Prints current forms from the list.
- Clear Forms  
Removes forms from image and from the list.

## Status panel

Status panel is a single button-like panel, displaying short status messages. Click on any button potentially may change the status panel info. Messages are enforced by colors; green/yellow/red, corresponding to normal/attention/warning status. For "Wait ..." messages, it would be wise not clicking on buttons until the procedure is completed.



Mask evaluation for Polygon and Wedge forms may take up to 5-10s/form. Just wait calm!

## Bottom control bar

Bottom control bar contains "Help", "Reset", "Save", "ELog", "Close" buttons, "N bins" editable field, "Grid", and "Log" check boxes.

- Help  
Shows pop-up windows with help info about navigation. Use scroll bar to read entire help message.
- Reset  
Restores original image size and spectral limits.
- Save  
Saves content of graphical window in png file. The file name is selected through the standard pop-up dialog window.
- ELog  
Serves to submit message in ELog. The content of graphical window will be added as attachment. Destination of the message is selected through the custom pop-up dialog window.
- Close  
Closes the Mask Editor application.
- Grid  
On/Off coordinate grid on image and spectrum.
- Log  
Serves as a switch between linear and log scale.
- N bins  
"N bins" field can be used to change a number of bins in spectrum. Spectrum will redraw, when edition is ended (press Enter on keyboard or change focus on other field).

## How to run Mask Editor

Mask Editor is developed as a part of the integrated data processing environment for XCS time correlation experiments. In this project the Mask Editor is integrated as one of the system GUIs. Also it can be executed as a stand-alone application named `med`. Stand-alone version of the Mask Editor can be launched on any of `psana` or `psexport` node using command-line interface, for example, for all default parameters:

```
med
```

## List of optional parameters

```

> med -h
Usage: med [options]

Optional input parameters.

Options:
  -h, --help                show this help message and exit
  -i IFNAME, --ifname=IFNAME
                           input image file name, default = ./roi-img
  -m MFNAME, --mfname=MFNAME
                           common path to I/O files with mask, default = ./roi-
                           mask
  -o OFNAME, --ofname=OFNAME
                           output png file name for current canvas, default =
                           ./fig.png
  -t TITLE, --title=TITLE
                           initial title of the garphical window, default = Mask
                           editor
  -x XC, --xc=XC            x coordinate of the center for Wedges, default = None
  -y YC, --yc=YC            y coordinate of the center for Wedges, default = None
  -p PICKER, --picker=PICKER
                           distance in pix, where object responce on mouse,
                           default = 8
  -w LW, --lw=LW           object line width, default = 1
  -c COL, --color=COL       color of the form lines "b"-blue, "k"-black, etc.,
                           default = b
  -v, --verbose             allows print on console, default = True
  -q, --quiet              supress print on console, default = False
  -f, --fexmod             file exchange mode on/off (True/False), default = False

```

## Data format for geometrical forms

Forms can be saved in file, loaded from file and displayed on image, printed on console monitor, and cleared/removed from image. This can be done using simple data representation for each form, which is quite self-explained in case of print or text-file format:

```

Form parameters for composition of the mask
Rectangle  48.00   50.00  262.00  380.00  1 b False False
Rectangle  987.00  853.00  255.00  380.00  1 w True False
Wedge      716.76  674.72  541.18  197.61 -171.39  174.59  1 b False False
Wedge      674.48  667.64  585.84  386.69  174.75  186.99  1 b False False
Circle     712.00  674.00  262.00  1 b False False
Circle     1068.00 180.00  112.00  1 b False False
Circle     191.00  898.00  117.00  1 b False False
Circle     752.00 1098.00   53.00  1 w True False
Line       689.79 1252.80  624.50  223.22  1 w True False
Line       829.99 1252.80  244.47  388.46  1 b False False
Line       836.67 1303.98  268.07  541.89  1 w True False
Line       692.02 1315.11  669.35  827.50  1 b False False
Polygon    1 w True False 10    400    373    620    ...
Polygon    1 b False False 6     329     674     683     ...

```

## File exchange mode

2014-06-12, CorAna V00-00-19, in release ana-0.11.6

In order to interactively communicate between Mask Editor and other application(s) Marcin Sikorski requested to introduce the file exchange mechanism for image and mask. It is assumed that external event processing application periodically supplies averaged image, Mask Editor can load it and use for interactive ROI mask correction, and submit in response the mask, which will be used by the external application. This asynchronous data exchange mechanism was implemented in CorAna.ArrFileExchange class. This algorithm uses numpy arrays with `np.save(fname, arr)` and `arr=np.load(fname)` methods. In order to get rid of collisions between reader and writer the "ring-buffer" (a.k.a. "round-robin") exchange mechanism is implemented. Data producer writes files with names enumerated in the ring buffer. During writing data is saved in the file with temporary name. When the file is written, it is renamed to indexed name. This eliminates probability of the read/write collision. Data consumer checks availability of the new data and loads numpy array from the latest file if necessary.

**Interface for class CorAna.ArrFileExchange**

```

#-----
# code in array producer
#-----
afe = ArrFileExchange(prefix='./my-numpy-arr') # one call per object
arr = ...                                     # supply array here
afe.save_arr(arr)                             # as many times as you need

#-----
# code in array consumer
#-----
afe = ArrFileExchange(prefix='./my-numpy-arr') # one call per object
arr = afe.get_arr_latest()                     # as many times as you need

# optional method:
status = afe.is_new_arr_available()             # returns True/False if the new array IS/IS NOT available
                                              # since last call to arr = afe.get_arr_latest()

```

Two ArrFileExchange objects for image reader and mask writer are incorporated in the Mask Editor. File exchange mode in the med application can be launched by the command:

```
med -f -i work/my-roi-img -m work/my-roi-mask
```

assuming that path to the file directory `work/` already exists. Options in this example provide functionality as follows;

- option `-f` turns on the file exchange mode,
- files with images are expected to have names `work/my-roi-img-rbn-00#.npz` and can be loaded by clicking on the GUI button "Load Image",
- and files with mask will be saved with names `work/my-roi-mask-rbn-00#.npz` by clicking on GUI button "Save Mask" or "Save Inv-M".

External application may communicate with launched med through the code pattern shown below

```

from CorAna.ArrFileExchange import *
...
    # create reader/writer objects with file name prefixes
    # exactly like in the med command line for opposite party:
    afe_rd = ArrFileExchange(prefix='work/my-roi-mask')
    afe_wr = ArrFileExchange(prefix='work/my-roi-img')
    ...
        # image writer
        image = np.array(...)           # supply numpy array for image
    afe_wr.save_arr(image)               # image writer
    ...
        # mask reader
    if afe_rd.is_new_arr_available() :   # check that the new data is available
        mask = afe_rd.get_arr_latest()  # mask reader

```

Mask Editor can be tested with toy image producer application, for example, launch two applications from different xterm windows:

```
test_img_gen -n 50 -o work/roi-img;
med -f -i work/my-roi-img -m work/my-roi-mask;
```

then, click on buttons "Load Image", "Save Mask", or "Save Inv-M" in the MaskEditor GUI.

## Image exchange with psana

The `CorAna.ArrFileExchanges` file exchange algorithm is used in psana module [imgalgos.image\\_save\\_in\\_file](#) to generate image files within ring buffer.

## Other file browser application

In addition to med, there is a file/image browsing application plims, which options can be seen by the command

```
plims -h
```

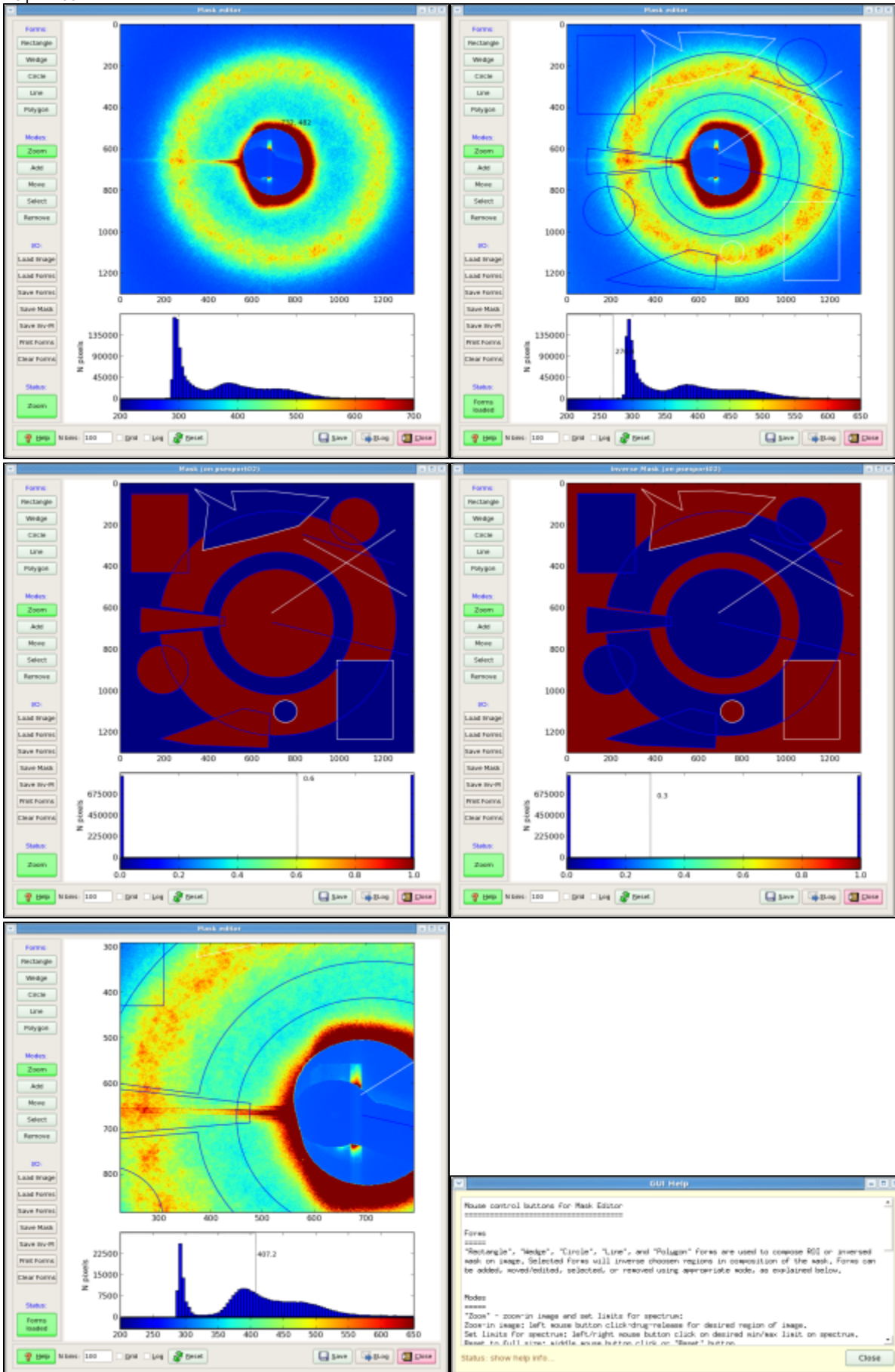
```
[pyimgalgos.image_save_in_file]
source      = DetInfo(MecTargetChamber.0:Cspad2x2.3)
key_in      = cspad2x2_image
ofname      = ./roi-img
mode        = 3
delay_sec   = 1
print_bits  = 255
```

## Demonstration of features

Plots for

- Input image
- Image with drawn forms on it
- Image for mask with forms on it
- Image for inversed mask with forms on it

- Help window



## References

- [imgalgos.image\\_save\\_in\\_file](#)- ring-buffer image source in psana
- `plims -h` - Image browsing application