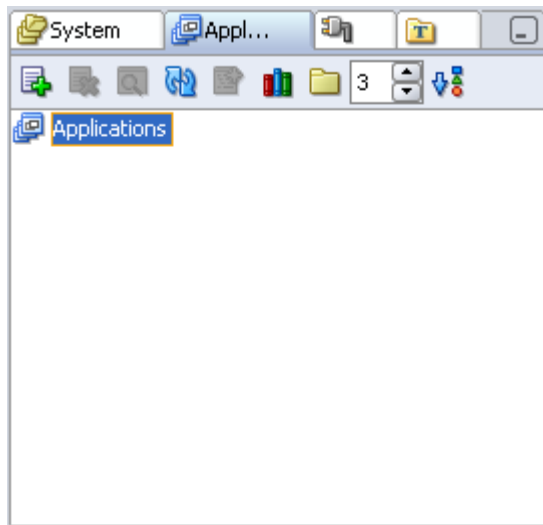


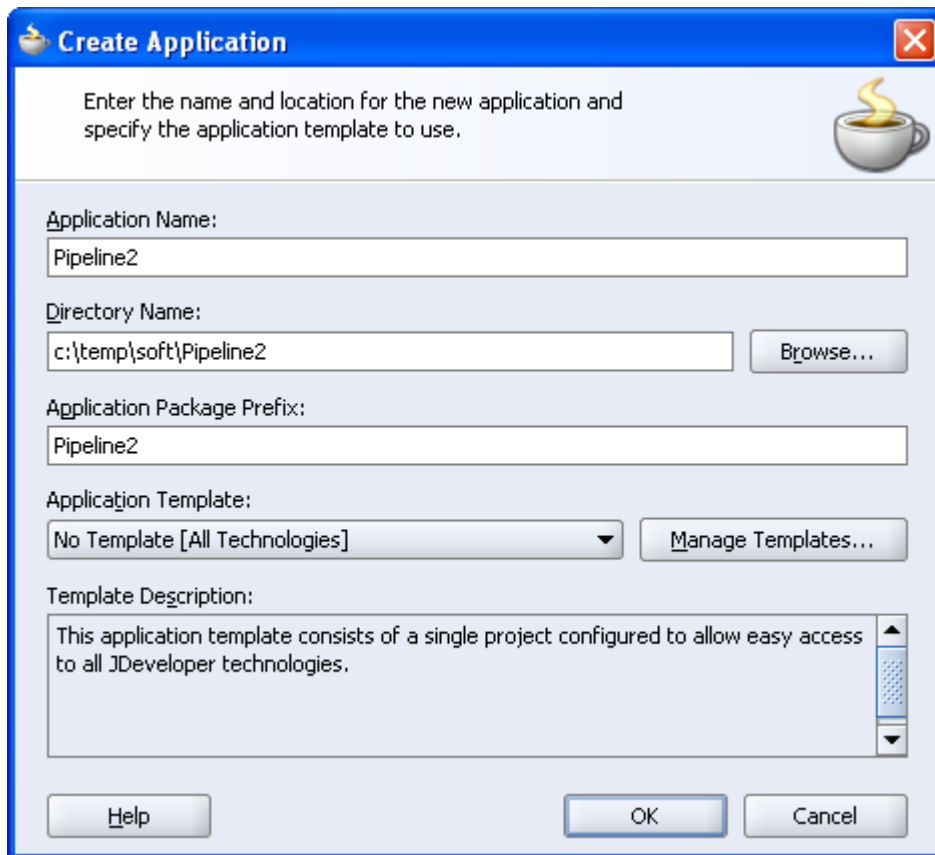
Tutorial I. Creating a Project from Existing Source Code

Creating a Project from Existing Source Code

Go to the *Application Navigator* on the left side of the IDE. If you don't see it you can select it from the *View* menu.



Right click the root ('Applications') node and select *New Application...* from the context menu. The *Create Application* dialog will appear:



Create Application

Enter the name and location for the new application and specify the application template to use.

Application Name:
Pipeline2

Directory Name:
c:\temp\soft\Pipeline2

Application Package Prefix:
Pipeline2

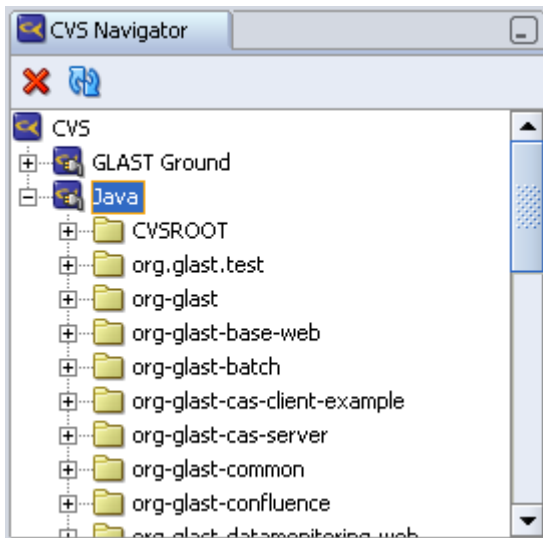
Application Template:
No Template [All Technologies]

Template Description:
This application template consists of a single project configured to allow easy access to all JDeveloper technologies.

You can enter information to identify your project name and location, and press *OK* to continue. You will be prompted to create an initial project -- we will create one from sources, so click *Cancel*.

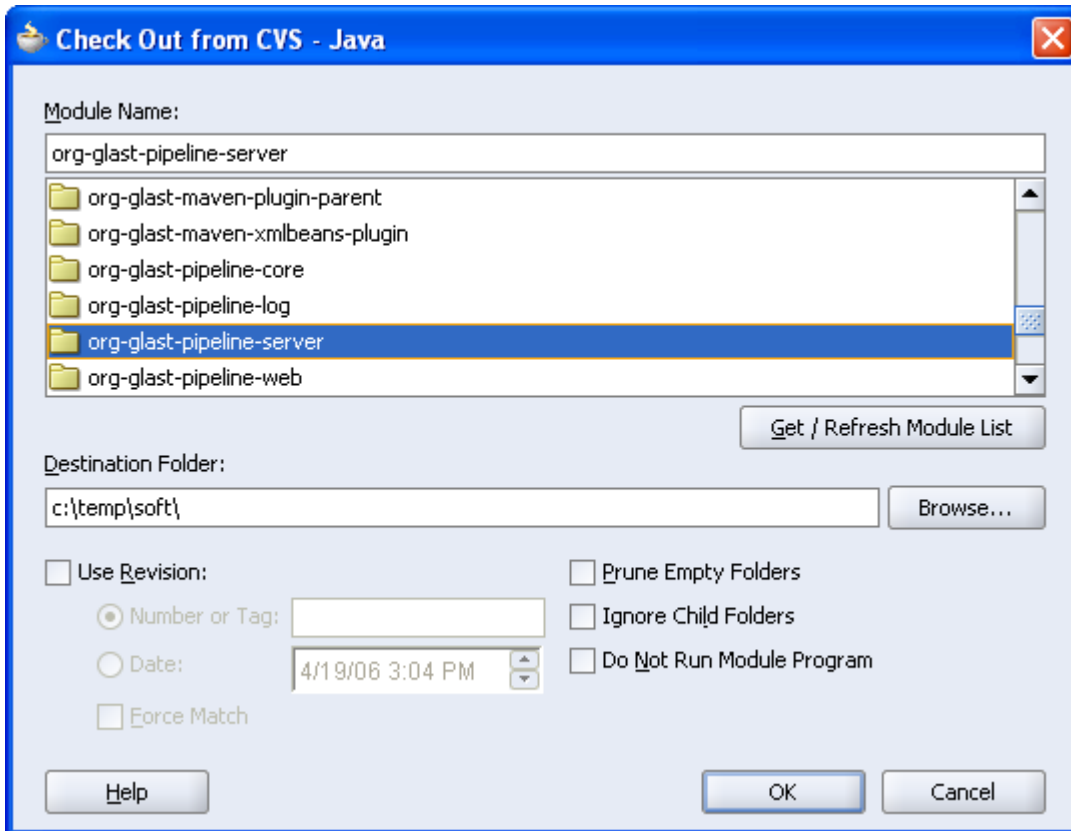
Return to the *Application Navigator* and select the application you just created.

Now go to the *CVS Navigator* (it can be selected from the *View* menu if you closed it):



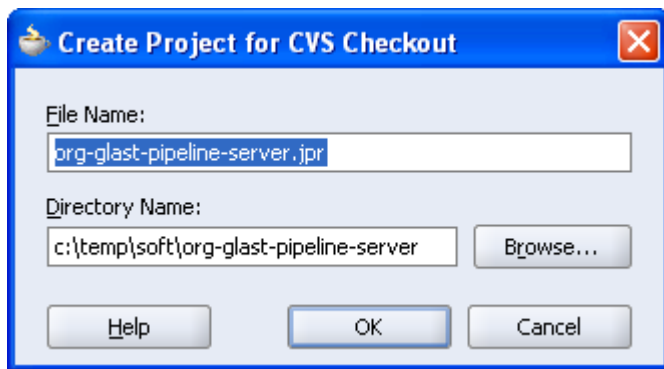
You can browse the CVS package tree and right click any package (or subpackage) and select *Check Out Module...* to check out the source code to local disk.

Alternatively, you can right-click the root node of the CVS tree (in this case 'Java') and select *Check Out Module...* to manually specify the package you want to check out:



From this dialog you can enter the package path manually or browse for it using the module list. Click *OK* to check out the package and continue.

You'll be prompted to create a project to hold the check-out-package:



Click *OK* and the project will appear under the Application you recently created. You can now browse and edit sources from the *Application Navigator*.

Good Luck!