

# CSPad alignment before run 4, cxi35711-r0009

- [Alignment parameters](#)
- [Alignment of quads](#)
- [Alignment of entire detector](#)
  - [CSPad image, spectrum, and image profile](#)
  - [Deviation of the wire shadows from lines](#)
- [2011-09-23 Tweaking the "offset\\_corr" parameters using the ring image](#)

## Alignment parameters

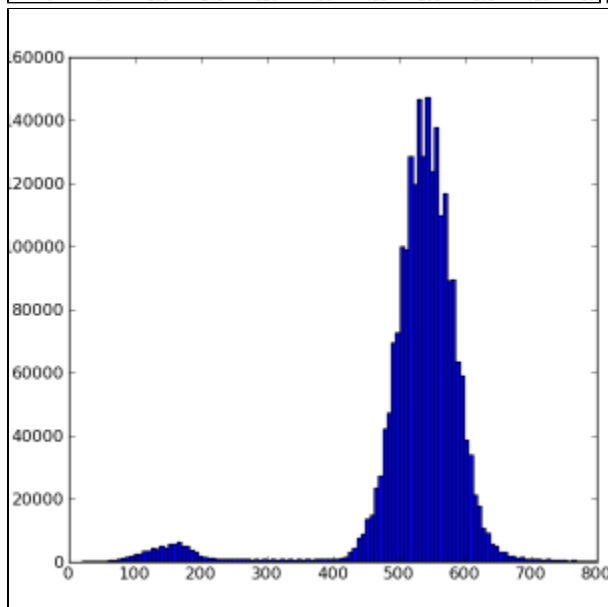
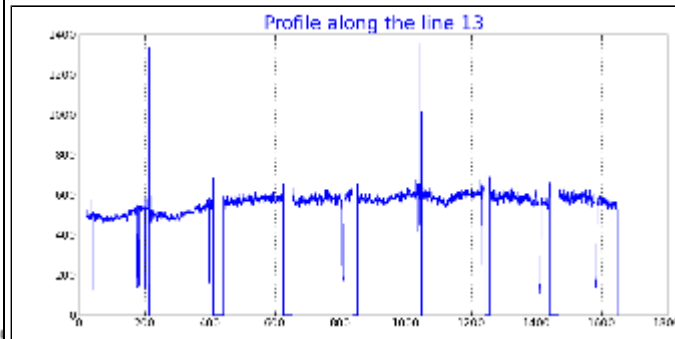
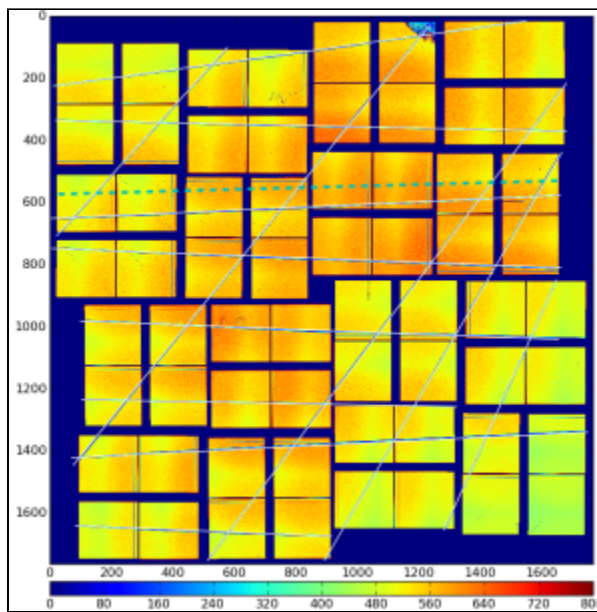
[2011-06-20 CSPad alignment parameters](#)

## Alignment of quads

[CSPad alignment of quads for cxi35711-r0009](#)

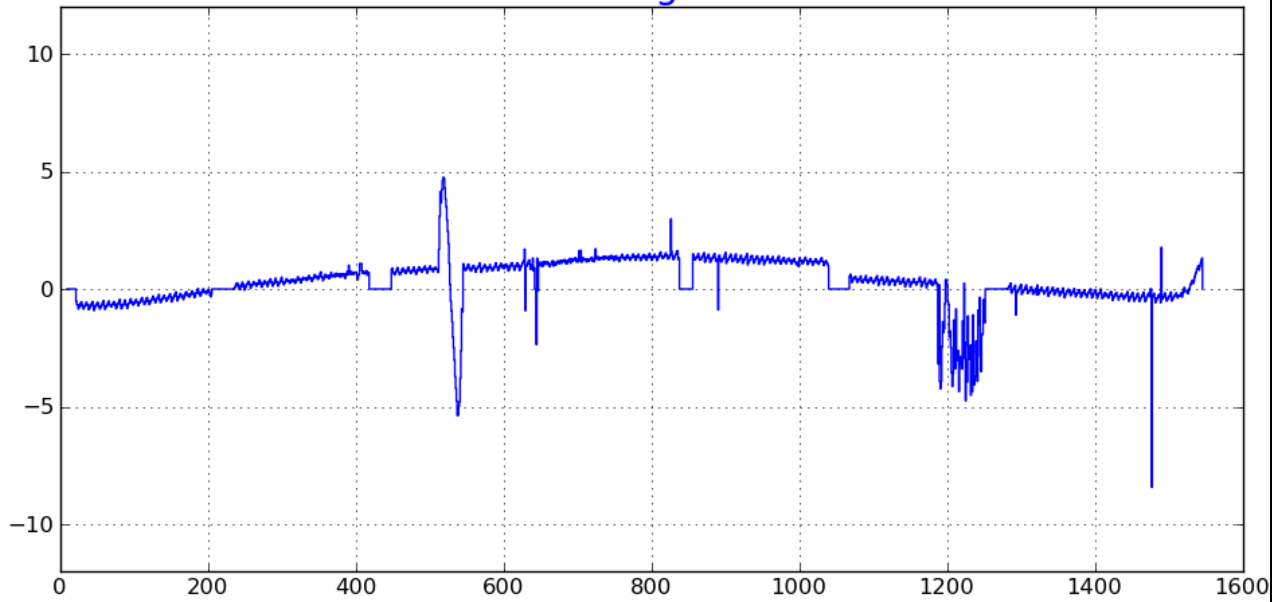
## Alignment of entire detector

[CSPad image, spectrum, and image profile](#)

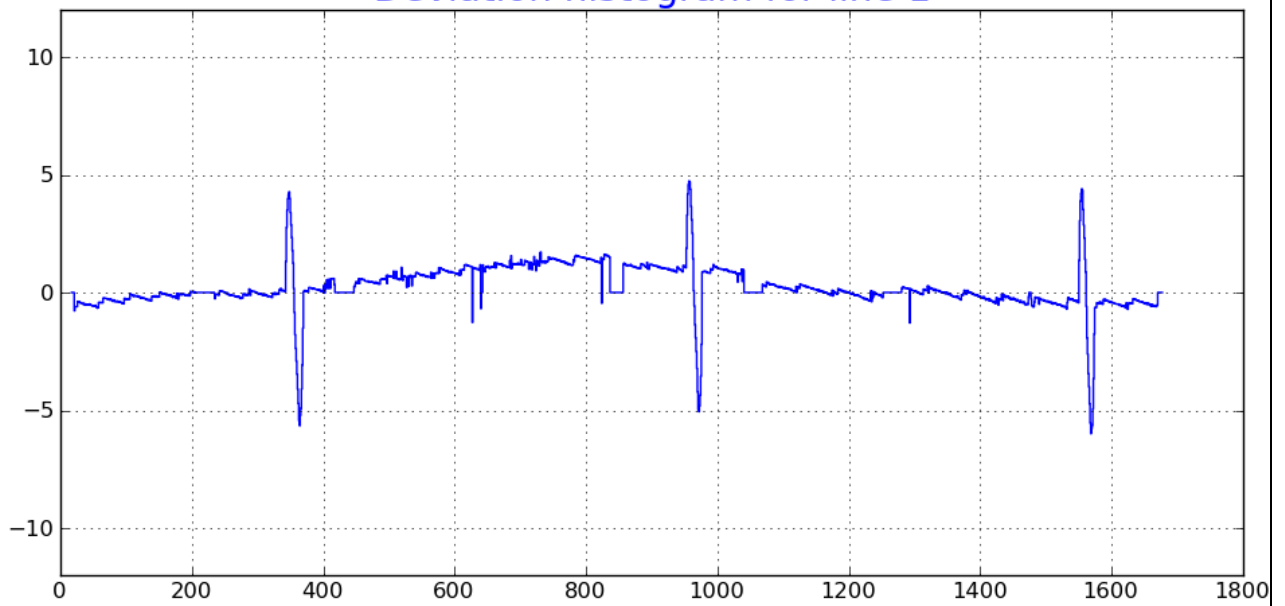


Deviation of the wire shadows from lines

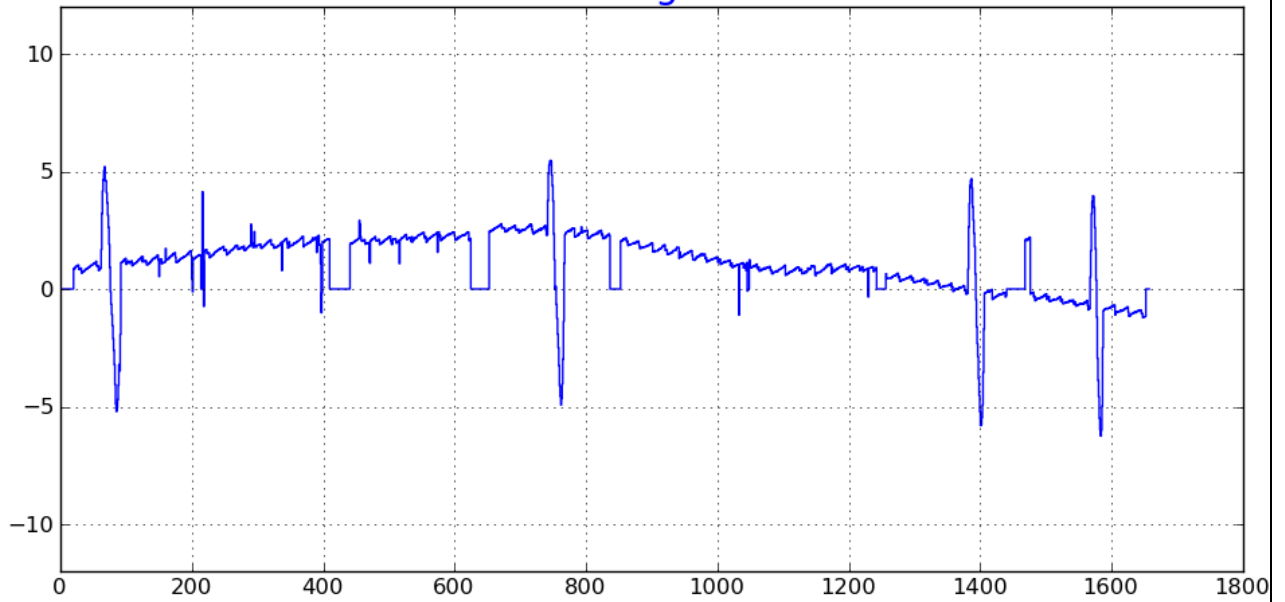
Deviation histogram for line 0



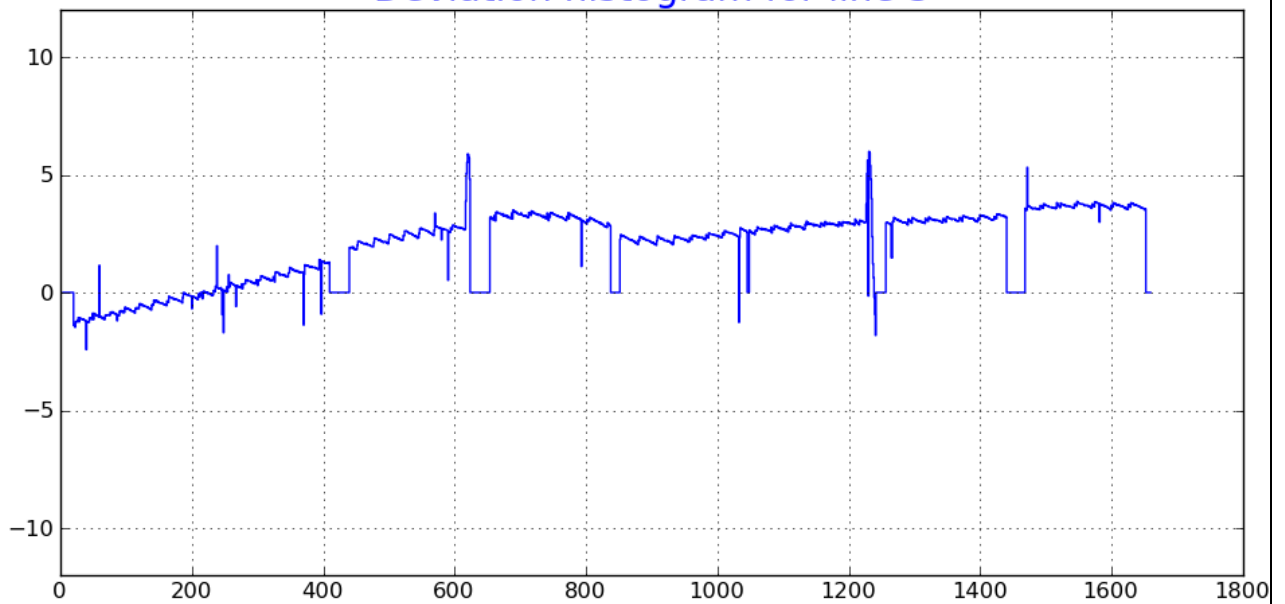
Deviation histogram for line 1



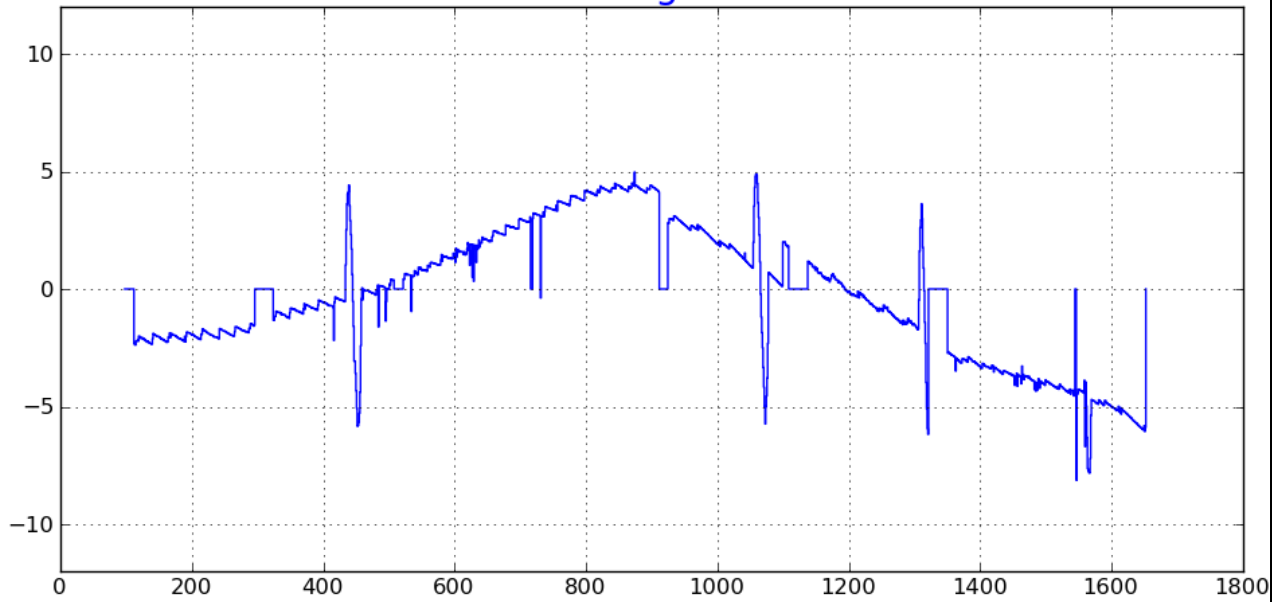
Deviation histogram for line 2



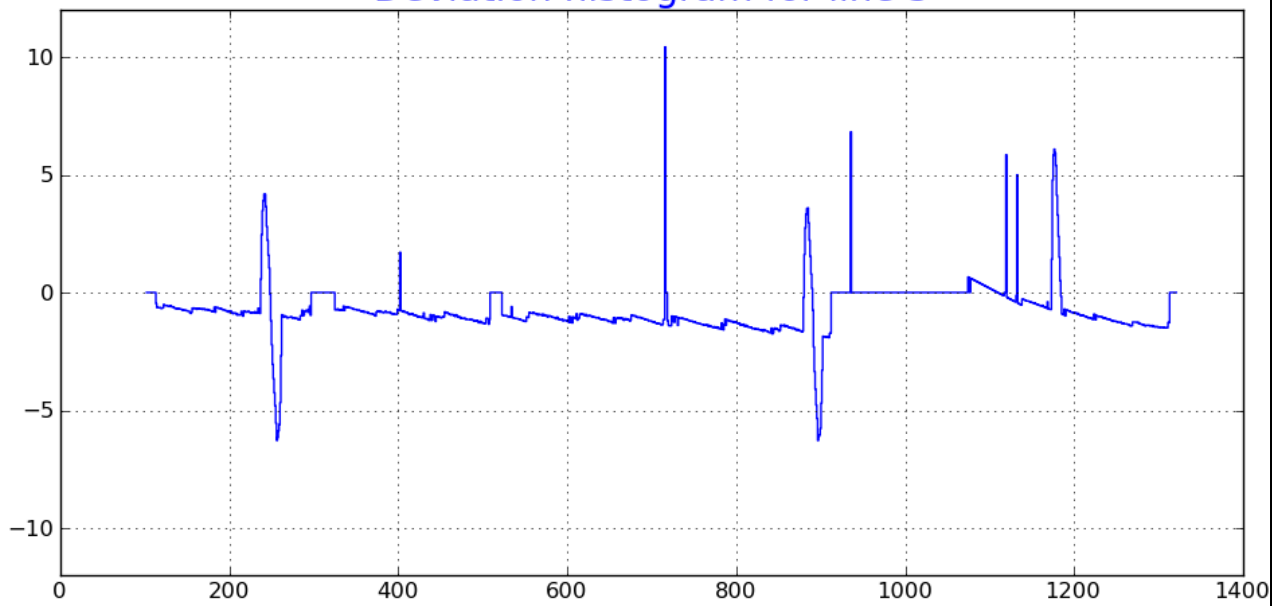
Deviation histogram for line 3



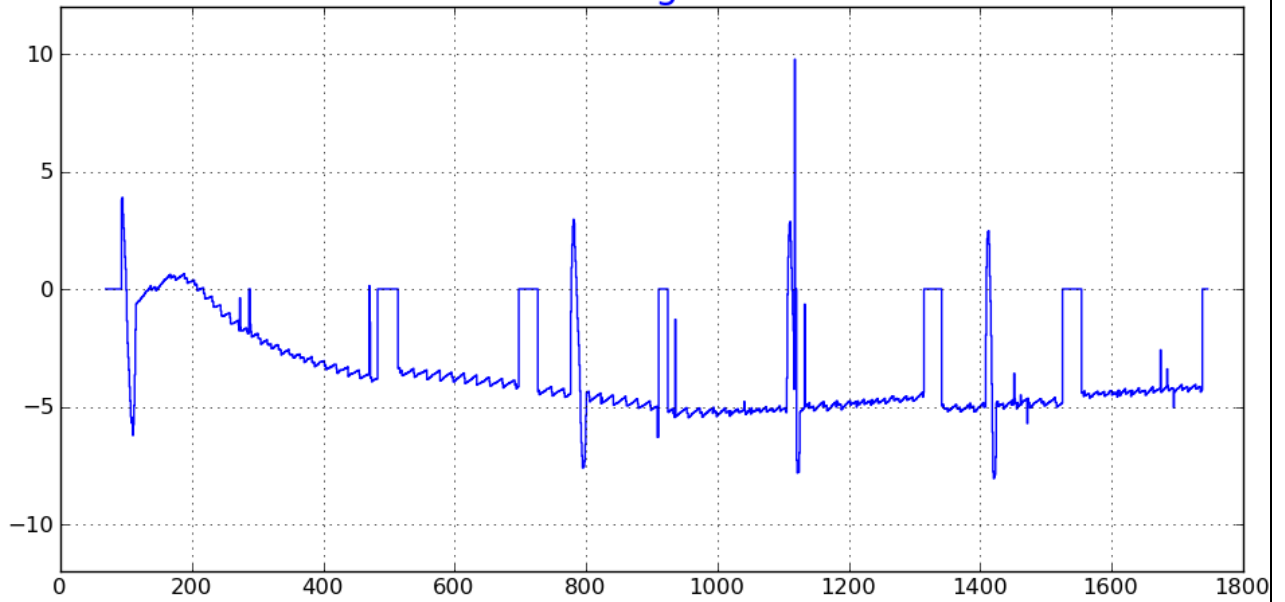
Deviation histogram for line 4



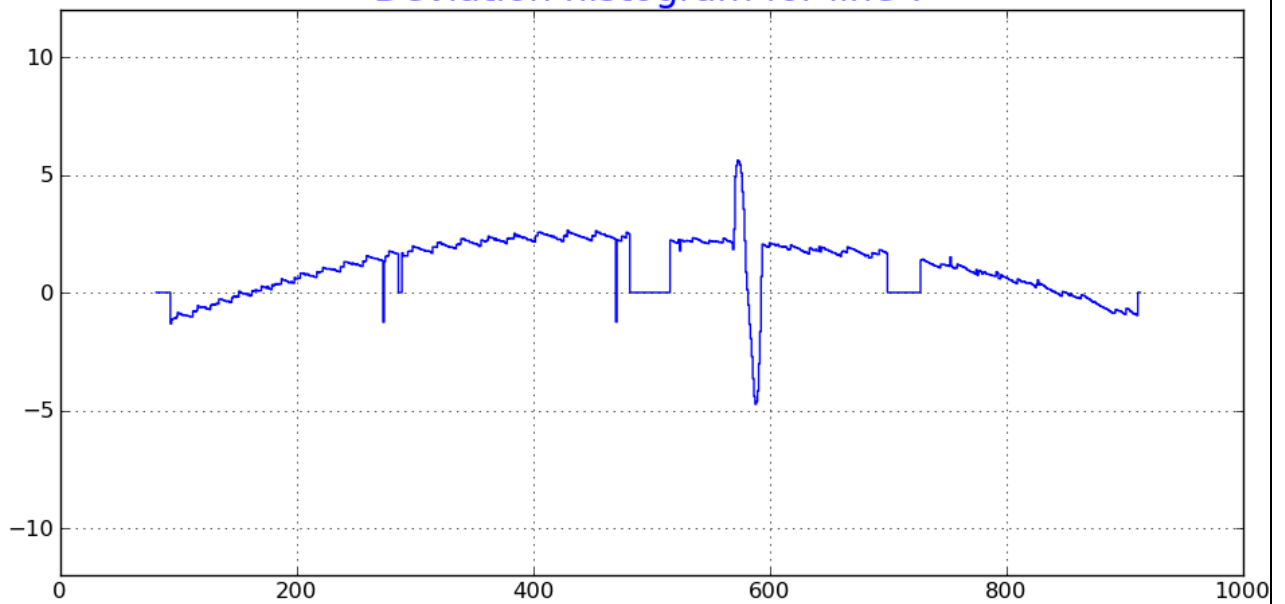
Deviation histogram for line 5



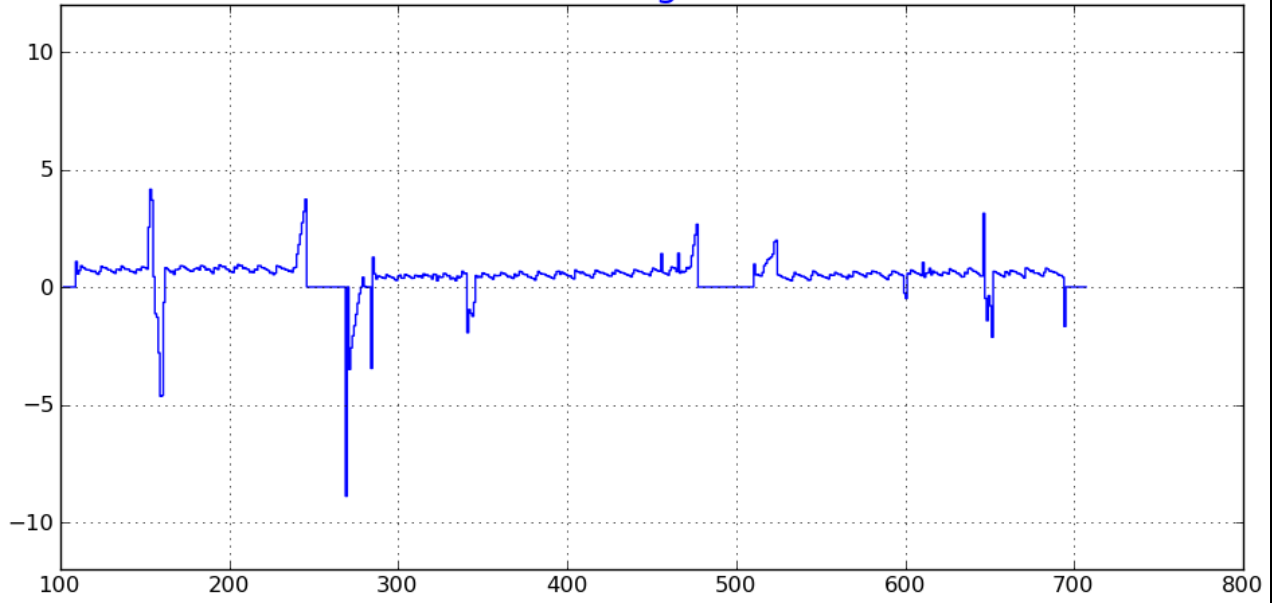
Deviation histogram for line 6



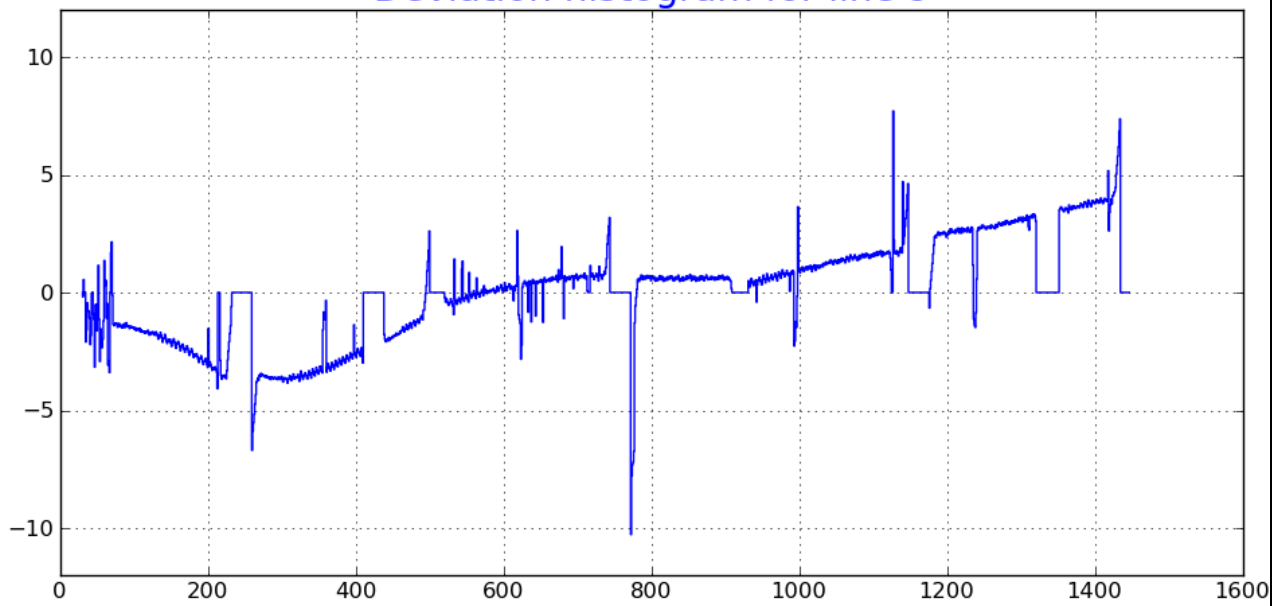
Deviation histogram for line 7



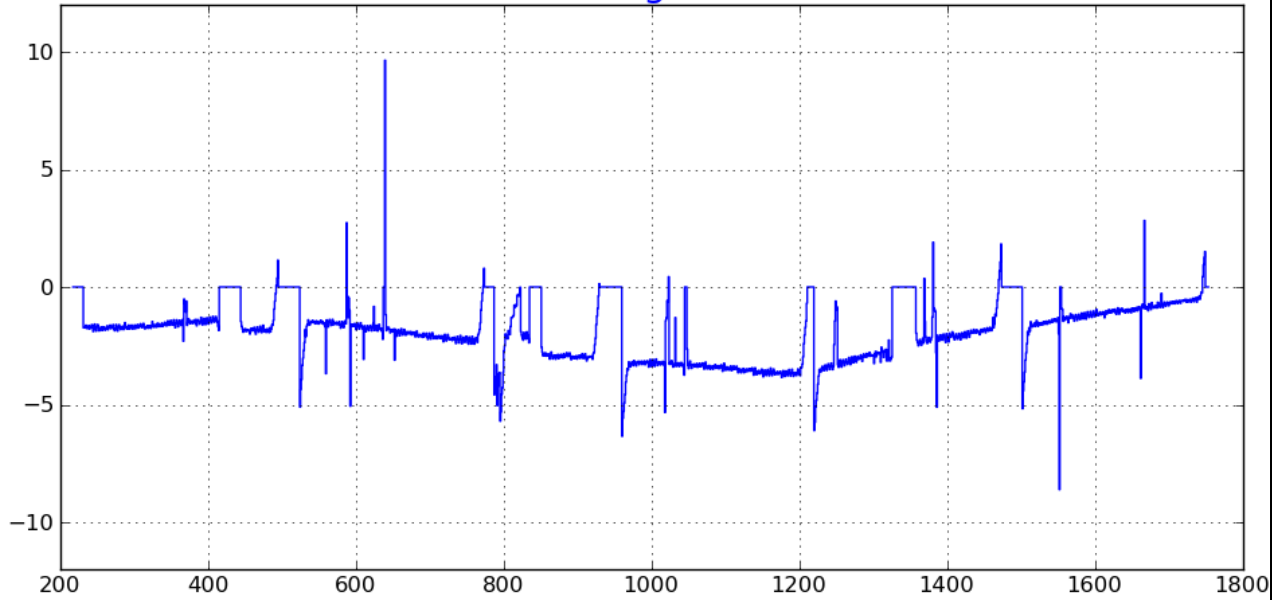
Deviation histogram for line 8



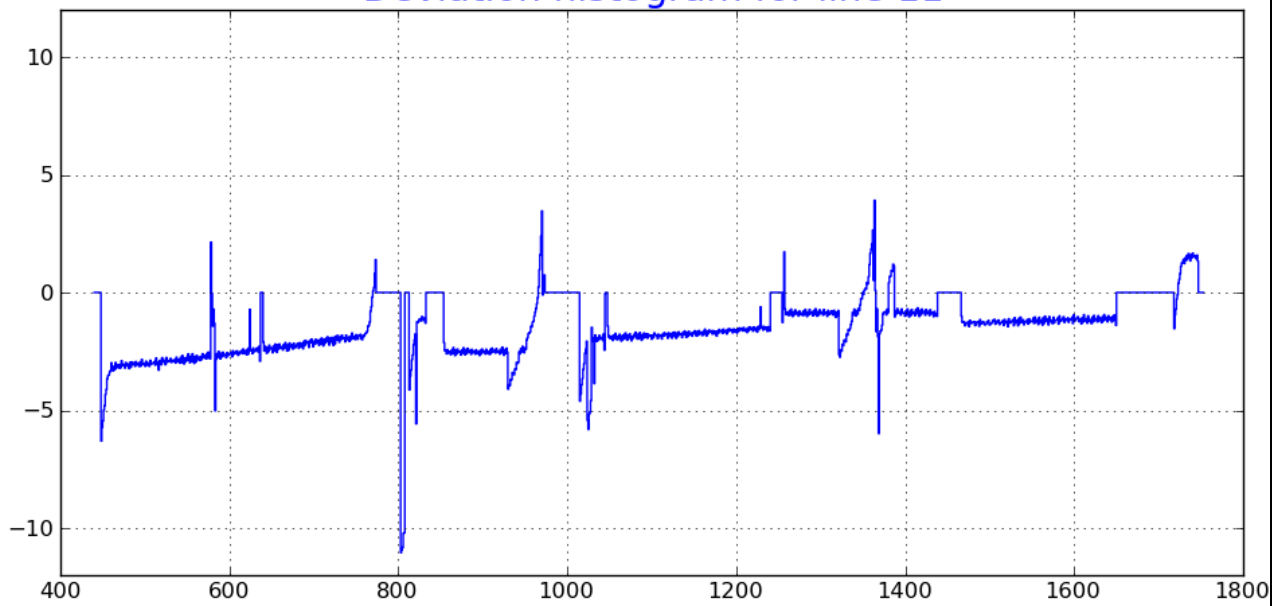
Deviation histogram for line 9



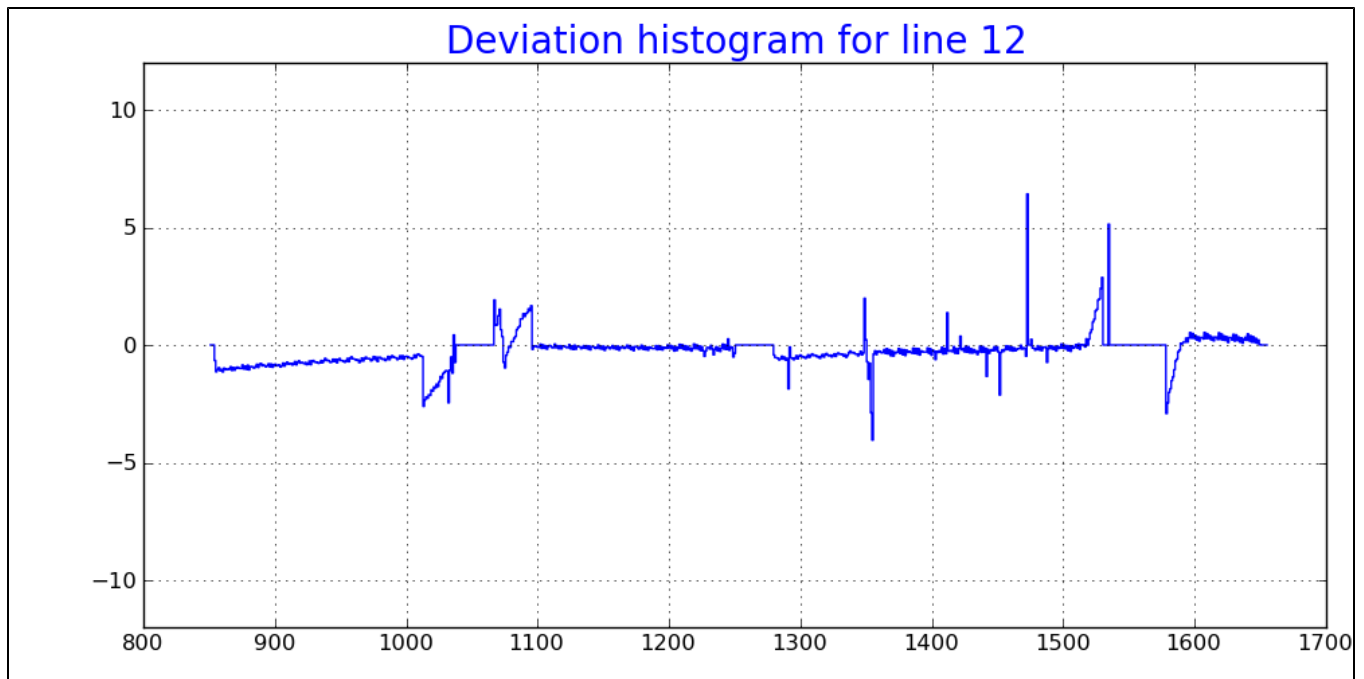
Deviation histogram for line 10



Deviation histogram for line 11

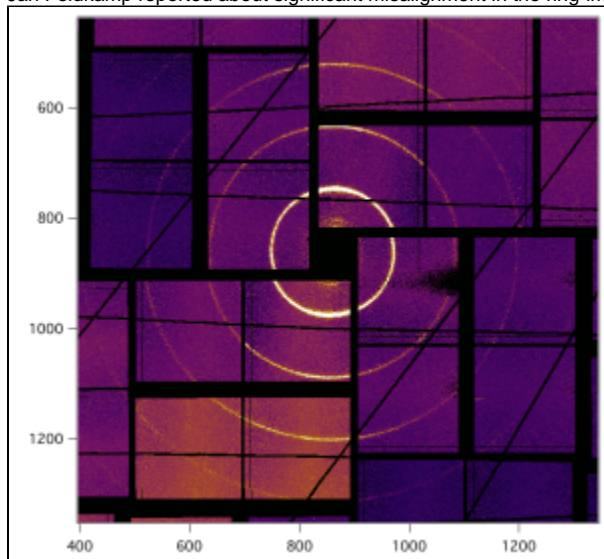






## 2011-09-23 Tweaking the "offset\_corr" parameters using the ring image

Jan Feldkamp reported about significant misalignment in the ring-image in the cxi35711 experiment:



We found that the wire-based image has a degree of freedom along two almost-parallel wires. The coordinates of the quad 2 and 3 in the "offset\_corr" parameters were adjusted as shown in [2011-06-20 CSPad alignment parameters#Calibration parameters of "offset\\_corr" type](#) in order to get aligned ring image:

