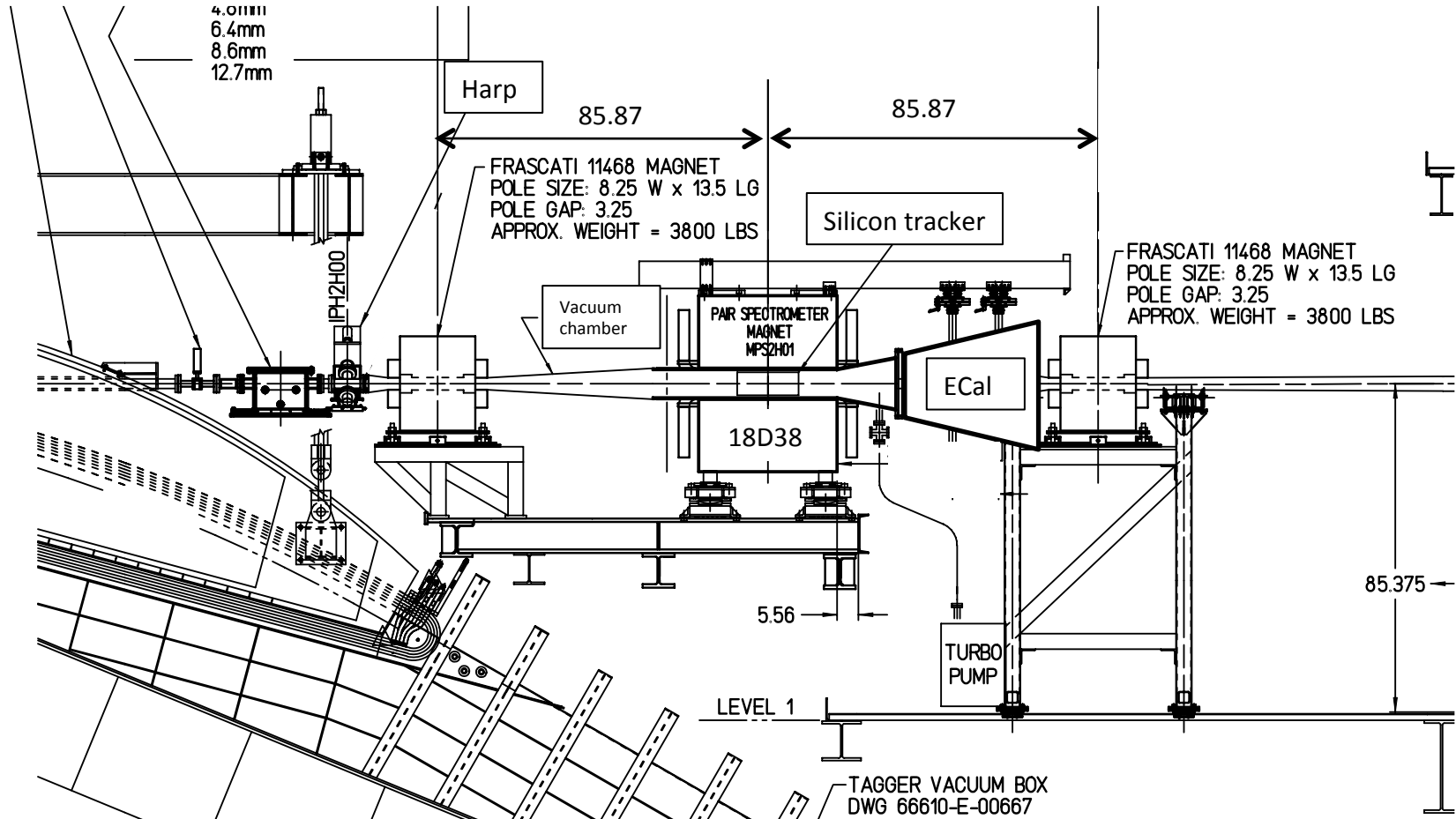
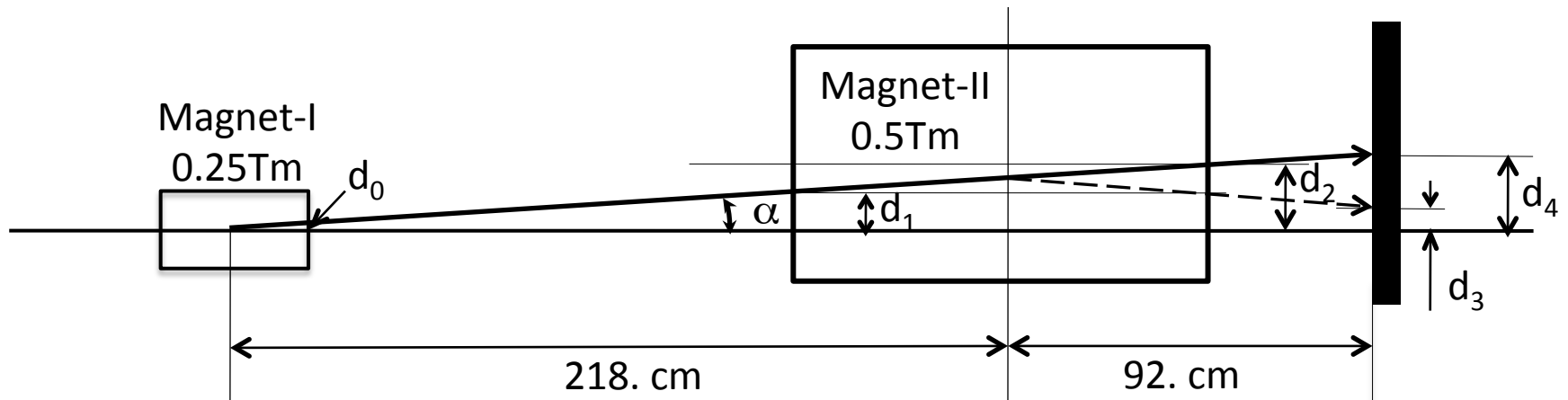


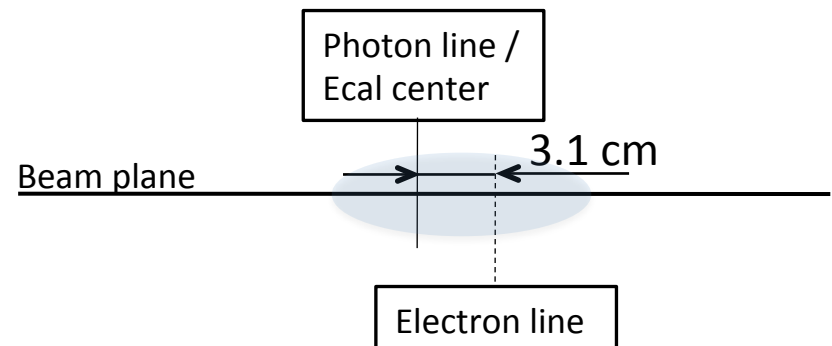
TPE chicane setup for HPS test



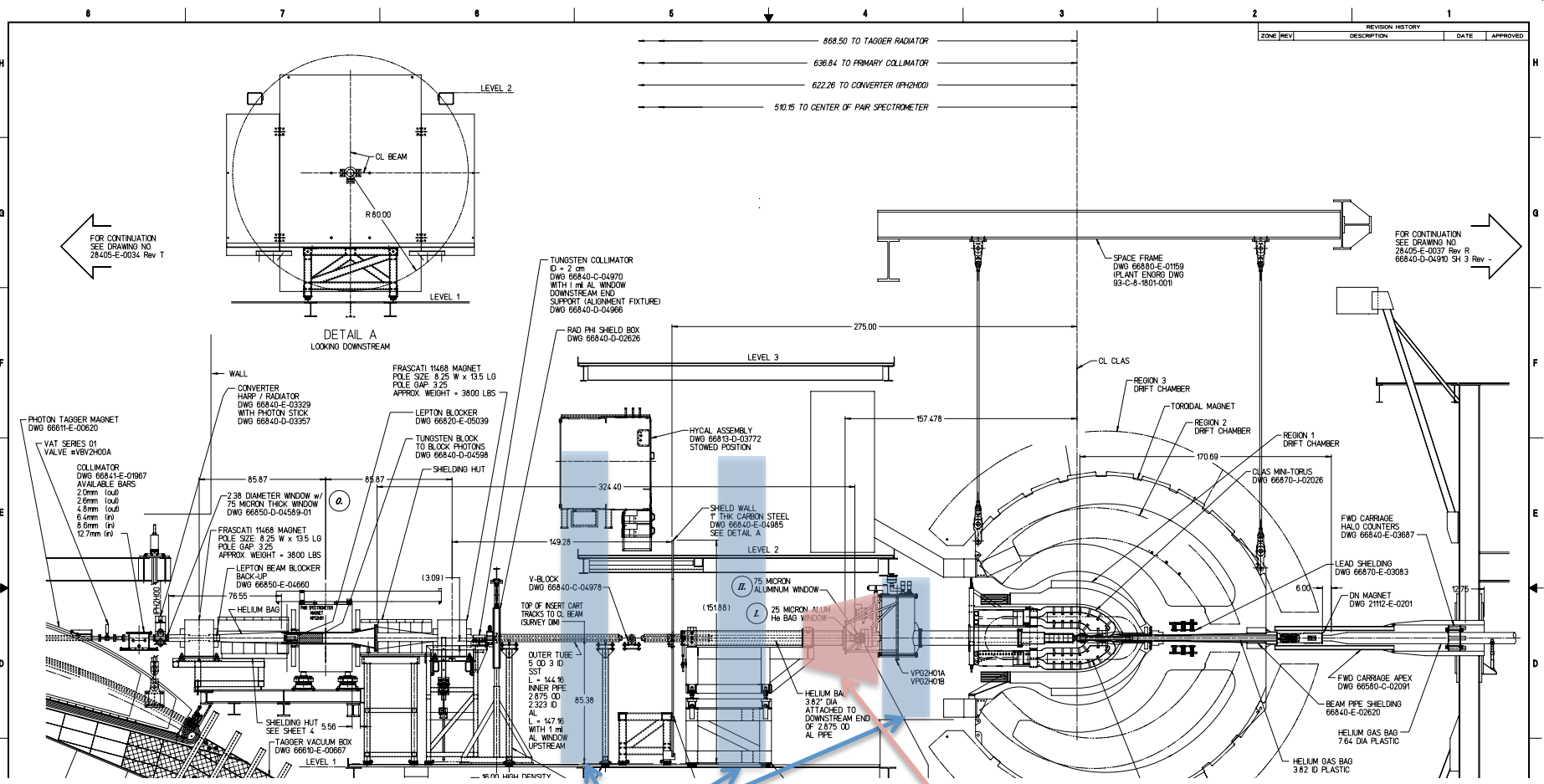
E (GeV)	Magnet-I (Tm)	Magnet-II (Tm)	α (mr)	d_0 cm	d_1 cm	d_2 cm	d_3 cm	d_4 cm
2.2	0.25	0.5	17	0.42	2.9	4.45	2.1	5.23



- Ecal is mounted symmetric relative to the magnet.
- Transverse displacement of the analyzing magnet at 2.2 GeV and 0.5Tm:
 - 4.45 cm if magnet exit is centered on photon line
 - 5.23 cm if Ecal is centered on photon line
- Photon beam displacement relative to the primary electron beam direction
 - At the entrance of the third magnet 7 cm
 - At the exit of the third magnet 7.8 cm
 - Pole width of the third magnet is 20 cm



Electron beam line and photon dump



Shielding walls

Photon beam dump

Dumps

DETAILS

