

# **Network Roadmap and Re-architecture**

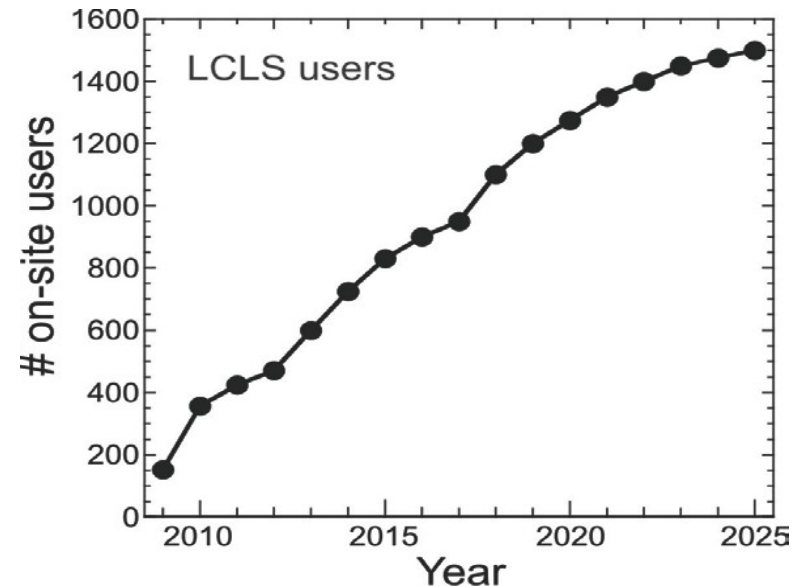
Presented to the  
Scientific Computing Sub Council

# Overview

- Drivers
- Scope
- Methodology
- Schedule
- Q&A

# Drivers

- SLAC Agenda item at the ALD level
- Security
- User community projected increase
- Proliferation of network devices
- Mobility
- 100Gbps and 40Gbps technology advancements

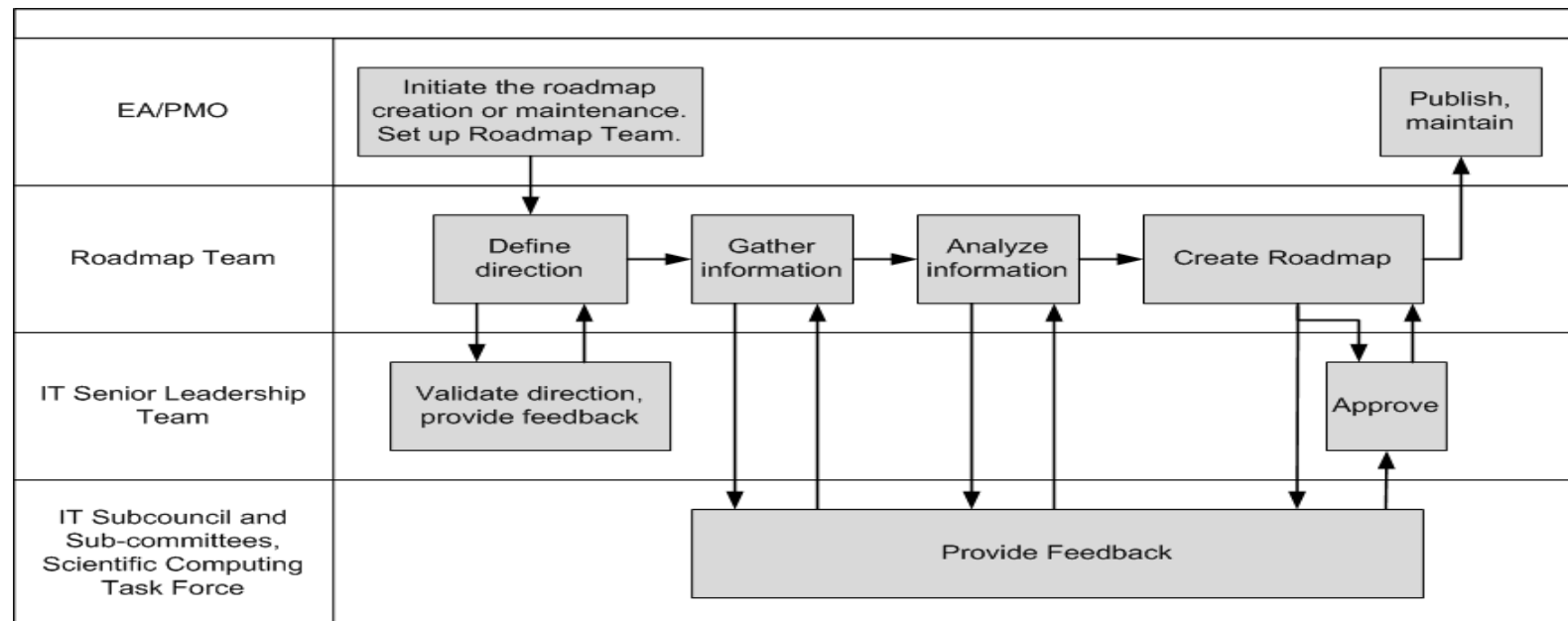


# Scope

- Enterprise Networks
- Scientific Computing Networks
- Controls Networks
  
- Availability, reliability, performance, cost
- IPv6

# Methodology

- SLAC standard Roadmap methodology
- Identify Resources
- Identify Stakeholders within SCSC, ITSC, user community



# Schedule

- Complete Roadmap: Q2 2012
- Address low hanging fruit: Q3 Q4 2012

# Questions

- ?