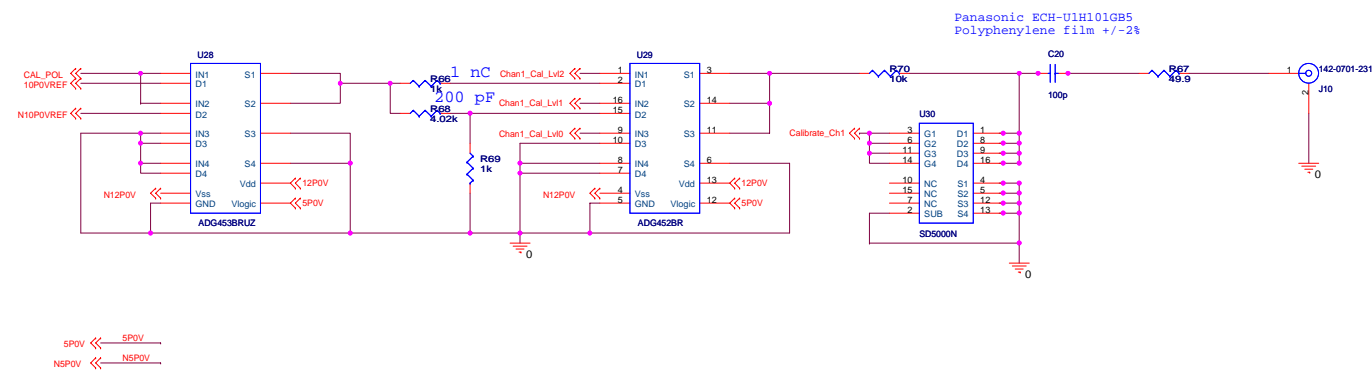
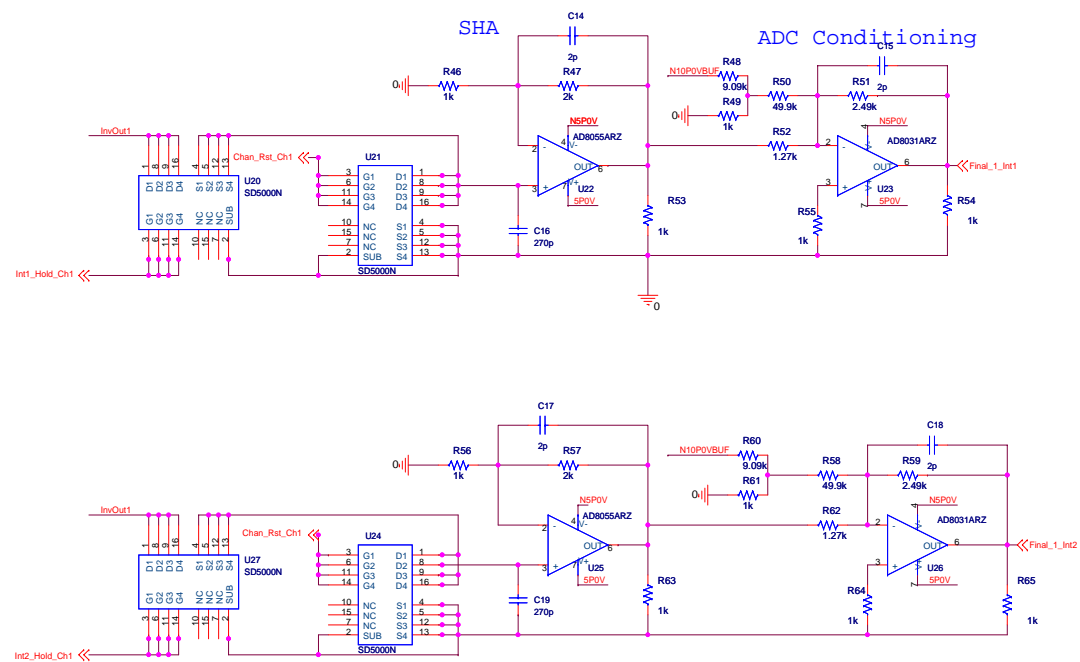
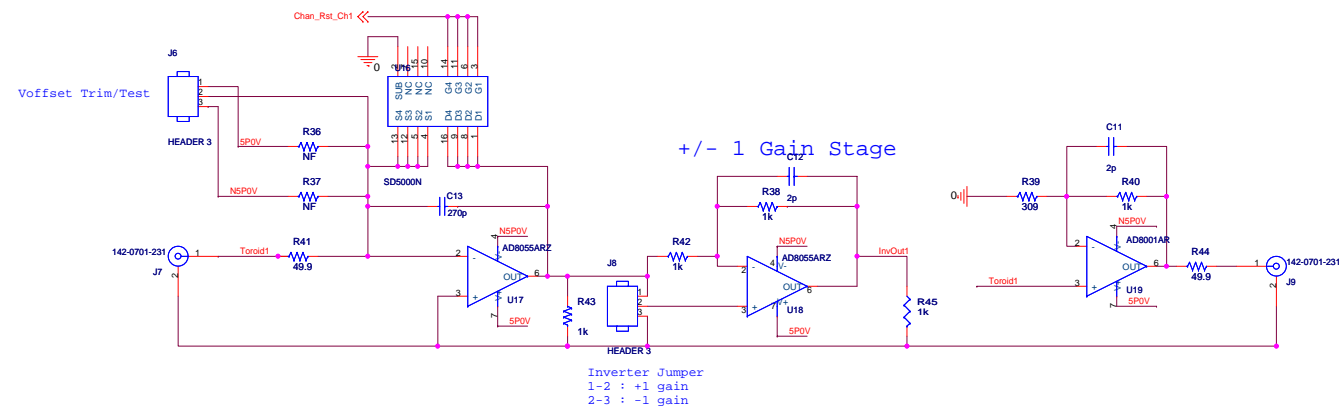
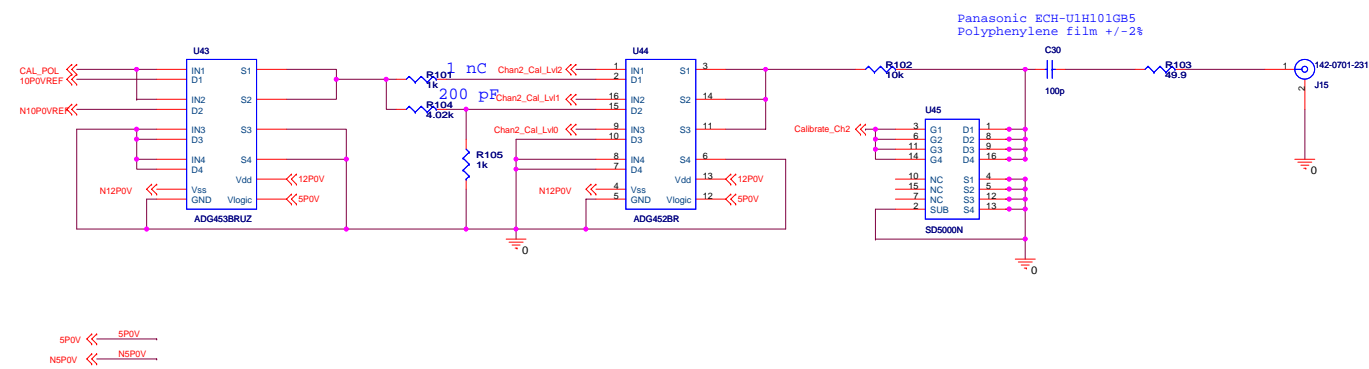
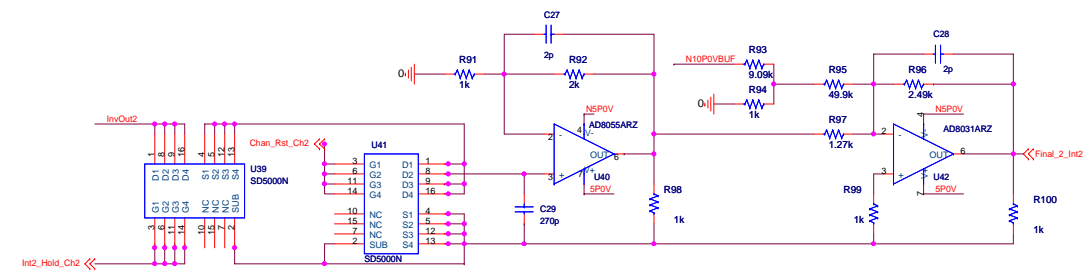
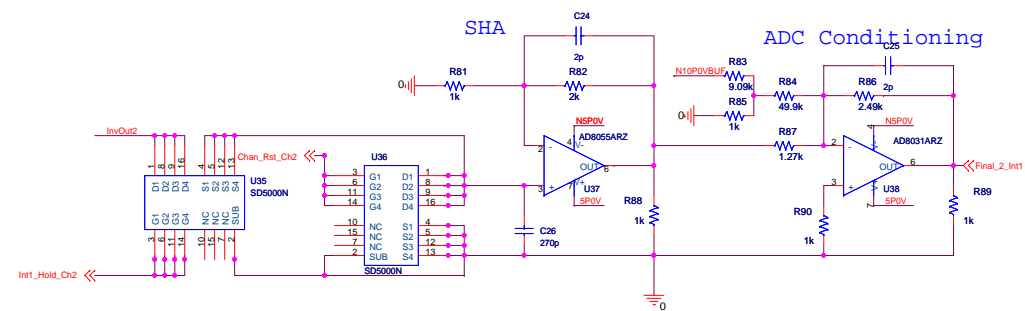
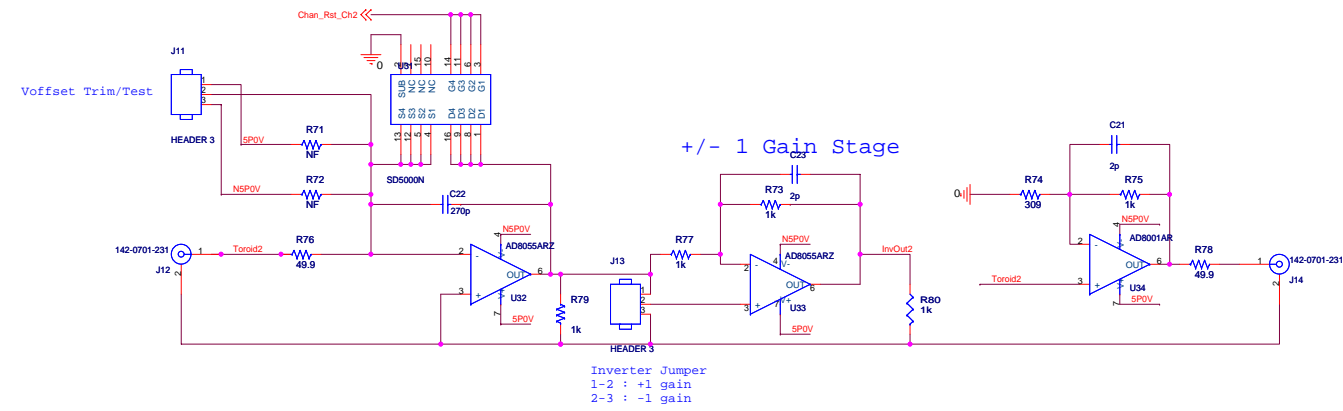


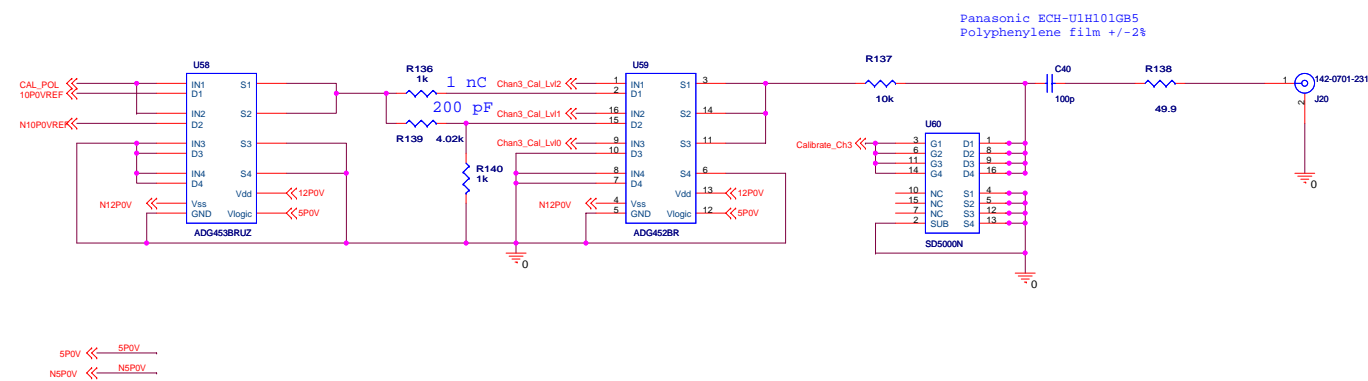
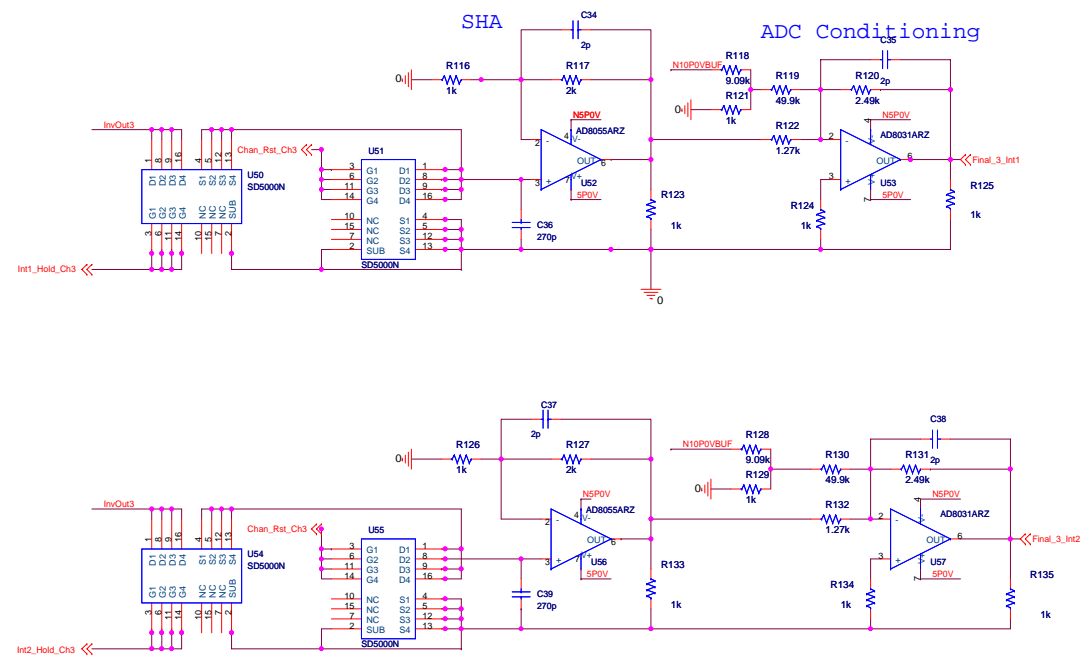
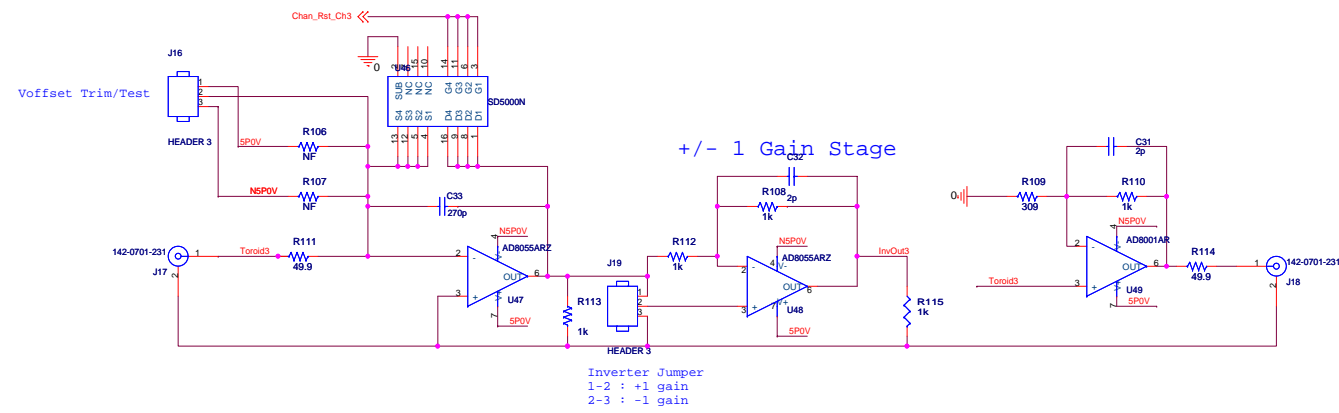
Cal Pulse Generation and Signal Integration



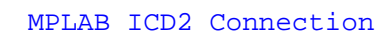
Cal Pulse Generation and Signal Integration



Cal Pulse Generation and Signal Integration

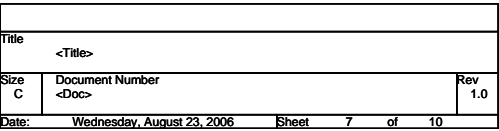


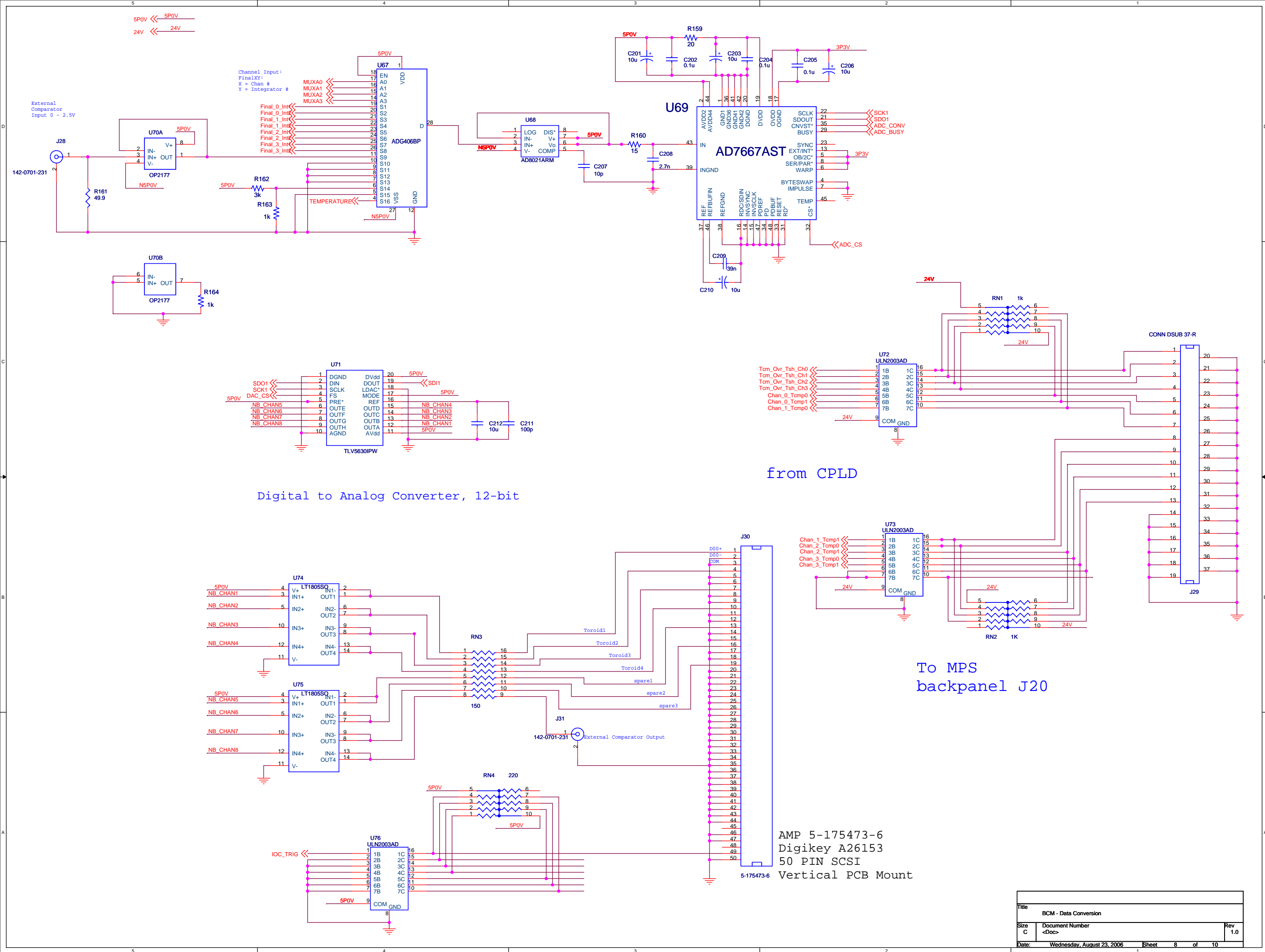




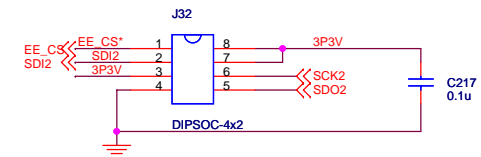
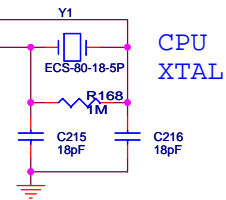
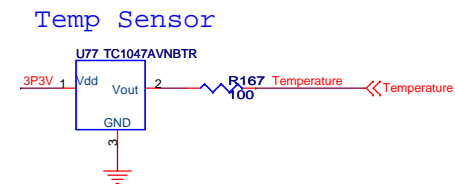
NOT OPERATIONAL on PIC24H yet







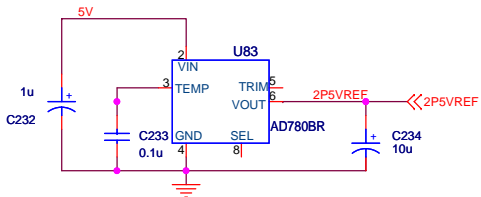
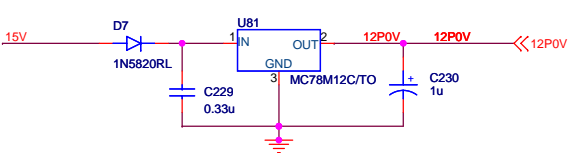
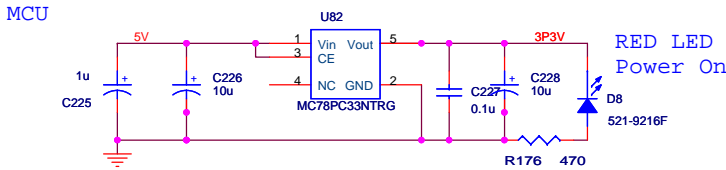
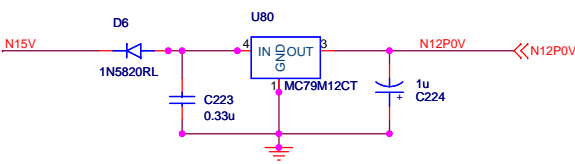
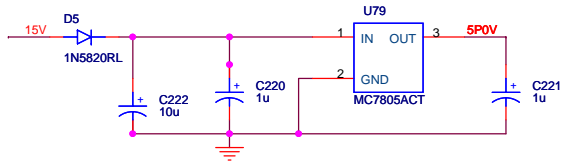
Title			BCM - Data Conversion
Size	Document Number	Rev	
C	<Doc>	1.0	
Date:	Wednesday, August 23, 2006	Sheet	8 of 10



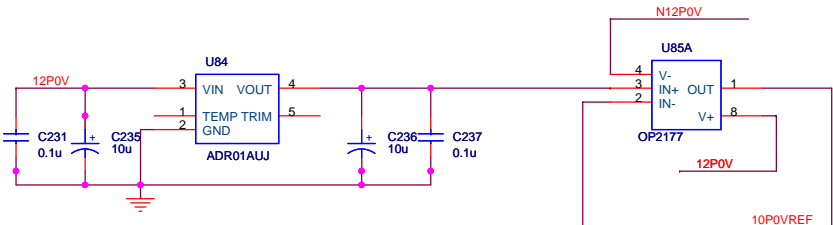
The diagram shows a three-channel LED driver circuit. It consists of three parallel branches, each containing an LED and a resistor in series. The LEDs are labeled D2 (521-9210F, Green), D3 (521-9831F, Blue), and D4 (LN48YCPX, Amber). The resistors are labeled R173 (330), R174 (470), and R175 (330). The circuit is powered by a common ground and three input lines labeled LED1, LED2, and LED3.

Title			
BCM - MCU			
Size C	Document Number <Doc>	Rev 1.	
Date:	Wednesday, August 23, 2006	Sheet	9 of 10

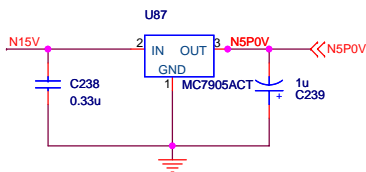
Power Regulation



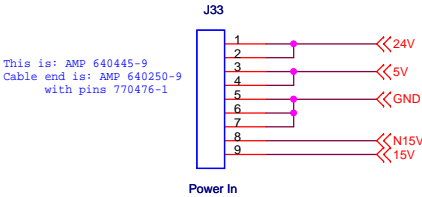
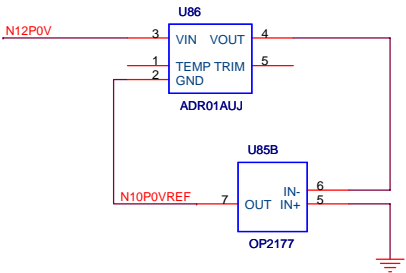
2.5V reference
(ADC)



+/- 10 Volt Reference
(Calibration, Analog)



NEGATIVE 5V REGULATOR
1Amp (ANALOG)



This is: AMP 640445-9
Cable end is: AMP 640250-9
with pins 770476-1