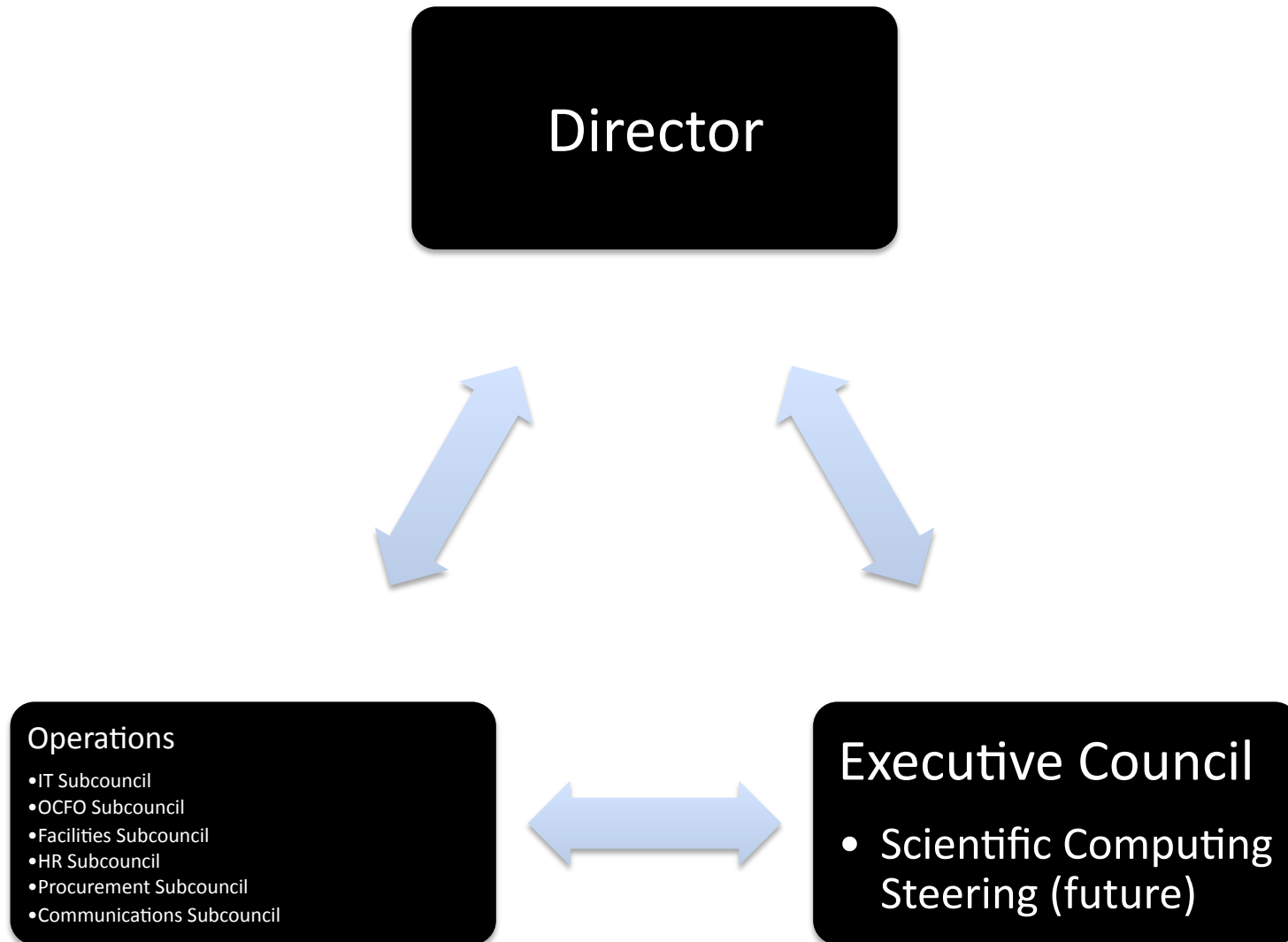


SLAC Internal Organization



Communications Paths

- Down
 - SLAC Today, SLAC website
 - All Hands meetings, Workgroup meetings, emails
- Two- Way
 - Line management (Director -> PPA Dir -> Dept Heads -> Group Leads->)
 - Subcouncils (<http://www-group.slac.stanford.edu/operations/SubcouncilMembers.asp>)

How to Know What is Going On?

- Many groups exist to address interest areas
 - How to keep track of activity of interest to you?
- How to interact with the system?
 - Feedback on issues from above
 - How to input concerns?
 - Who to contact when you don't know who handles that area?

Any Safety Issues?