



Fermi

Gamma-ray Space Telescope



The VO glast.org

Michael Kuss

INFN Pisa

9 February 2010

VO manager: Michael Kuss, Francesco Longo

software manager: Michael Kuss, Francesco Longo, Johan Bregeon

VOMS server: voms2.cnaf.infn.it, voms-02.pd.infn.it (replica)

WMS: glite-rb-00.cnaf.infn.it, prod-wms-01.pd.infn.it (backup)

Site	Place	CPU	Reserved	Fermi SW
INFN-PISA	INFN Pisa	1746	52	y
TRIESTE	INFN Trieste	228	48	y
INFN-T1	CNAF/Bologna	1846	100	y
GRIF	LAL/POL Paris	2100	?	y
INFN-BARI	INFN Bari	737	70	n
PERUGIA	INFN Perugia	180	?	n
INFN-NAPOLI-PAMELA	INFN Napoli	130	?	n
INFN-CNAF	CNAF/Bologna	8	?	n
CNR-ILC-Pisa	CNR Pisa	4	?	n
ESA-ESRIN	ESA Rome	33	?	n
SNS-PISA	SNS Pisa	63	?	n
ROMA2	INFN ROMA2	24	?	n

Running Fermi Software

Use the software tag as requirements in your jdl file:

```
Requirements = Member("VO-glast.org-GlastRelease-rh9_gcc32opt-v15r47p1",  
other.GlueHostApplicationSoftwareRunTimeEnvironment);
```

```
Requirements = ( other.GlueCEInfoHostName == "gridcel.pi.infn.it" );
```

In your shell script, source the setup.sh script giving the tag as parameter:

```
# script which will set the following variables:  
# INST_DIR points to the main install dir of the package  
# GLAST_EXT points to the external libraries  
# LATCalibRoot points to the calibration files  
# PACKAGEROOT points to the package root dir, like cmt defines it  
source $VO_GLAST_ORG_SW_DIR/setup.sh VO-glast.org-GlastRelease-rh9_gcc32opt-v15r47p1  
[ $? -ne 0 ] && sourcing the script failed && exit 1
```

And, use the INST_DIR scripts, there is no CMT:

```
MALLOC_CHECK_=0 $INST_DIR/bin/Gleam jobOptions.txt
```

Caveats

The workload management system (WMS) doesn't queue jobs. It uses a rank to decide on which queue a job might start earliest, based on information supplied by the information super-market (ISM), and sends it there.

```
DefaultRank = -other.GlueCEStateEstimatedResponseTime; (rank based on the recent response time of the queue).
```

Issues:

- fails if the queue is shared among VO's, and internal priorities are enabled.
- fails if a queue manages few CPU's, because it may fill-up before the ISM has updated it's database.
- fails if the underlying batch system allows also local users.

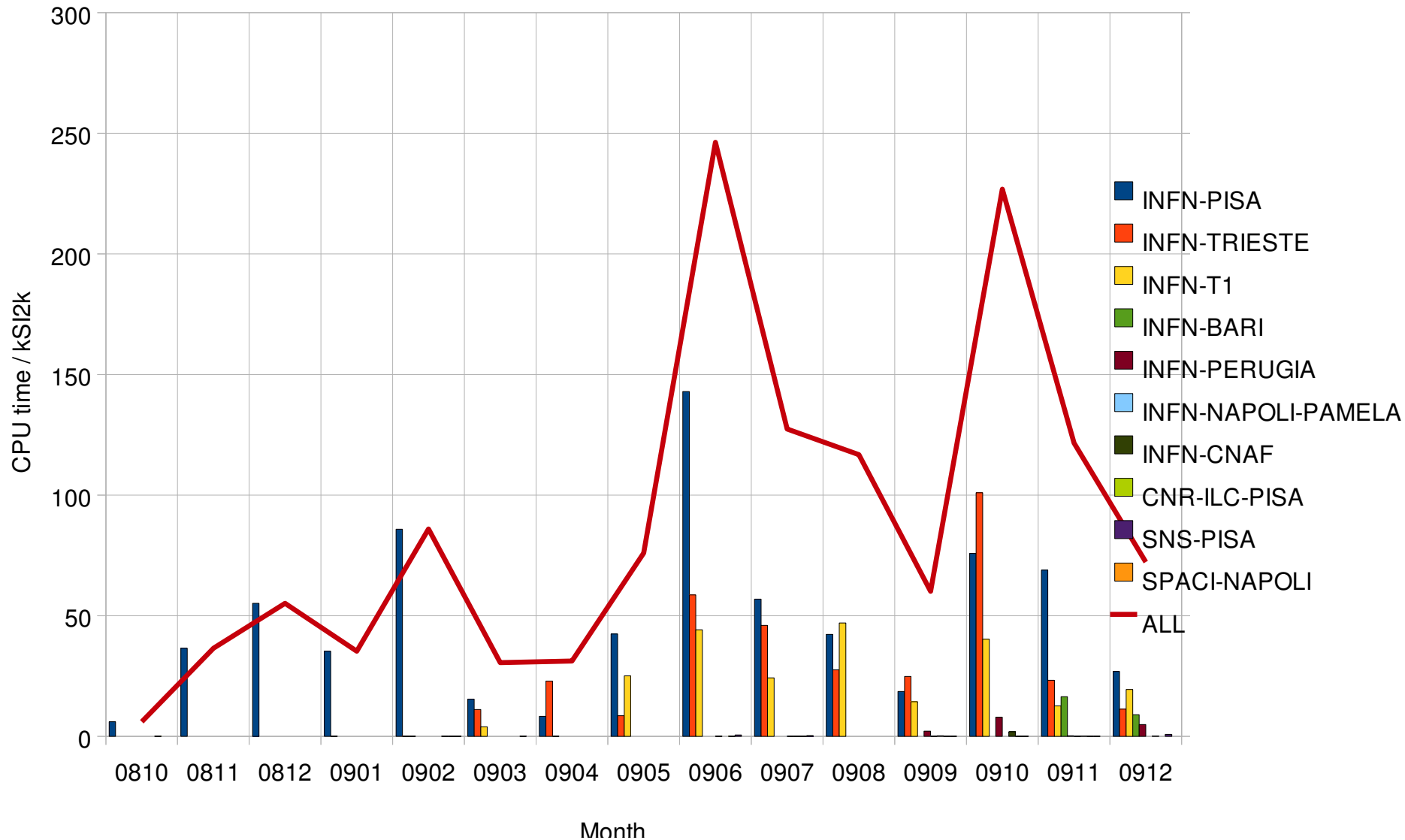
Consequence: Fermi SW isn't installed at sites with few (<100) CPU, no dedicated queue, and local users.

More issues: each site is different, i.e. shared SW area or not, missing packages, etc.

```
Rank = ( other.GlueCEStateWaitingJobs == 0 ? other.GlueCEStateFreeCPUs :  
-other.GlueCEStateWaitingJobs );
```

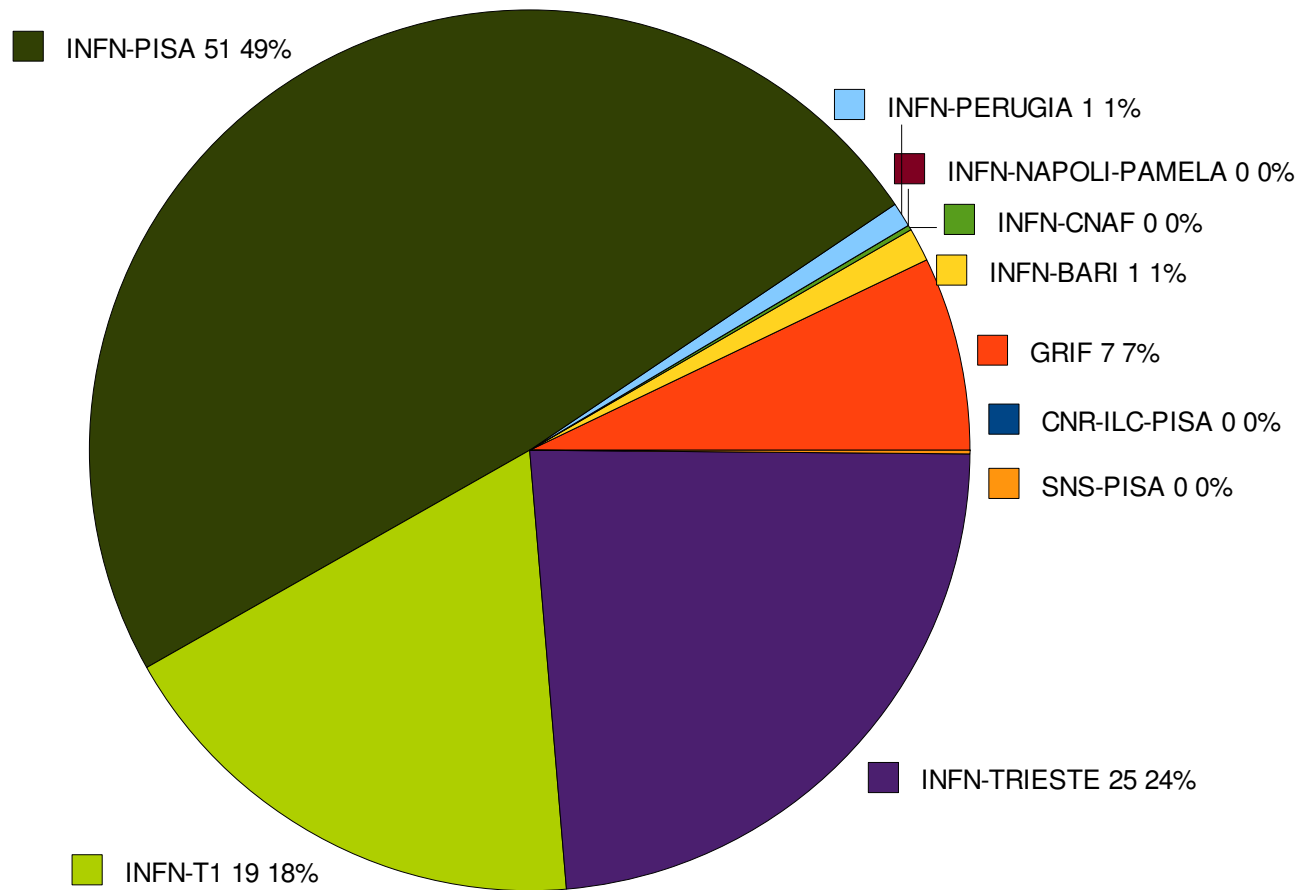
Usage Statistics

glast.org GRID utilization by month



Usage Statistics II

glast.org EGEE GRID utilization 2009 (kSI2k)



Joining the VO glast.org

Instructions for the following items can be found in the sidebar of <http://grid-it.cnaf.infn.it/>, “Access to the grid”.

1. Enable your UserInterface (UI). Usually not needed, as every site should have at least one UI operational.
2. Get your personal certificate.
3. Register to a VO (i.e. glast.org).
4. Learn how to “Use the grid”.