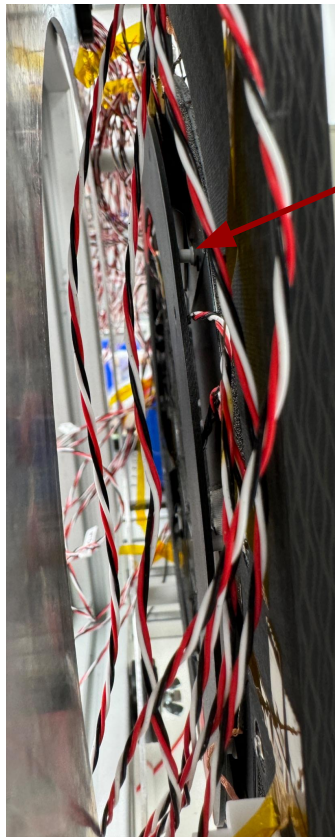
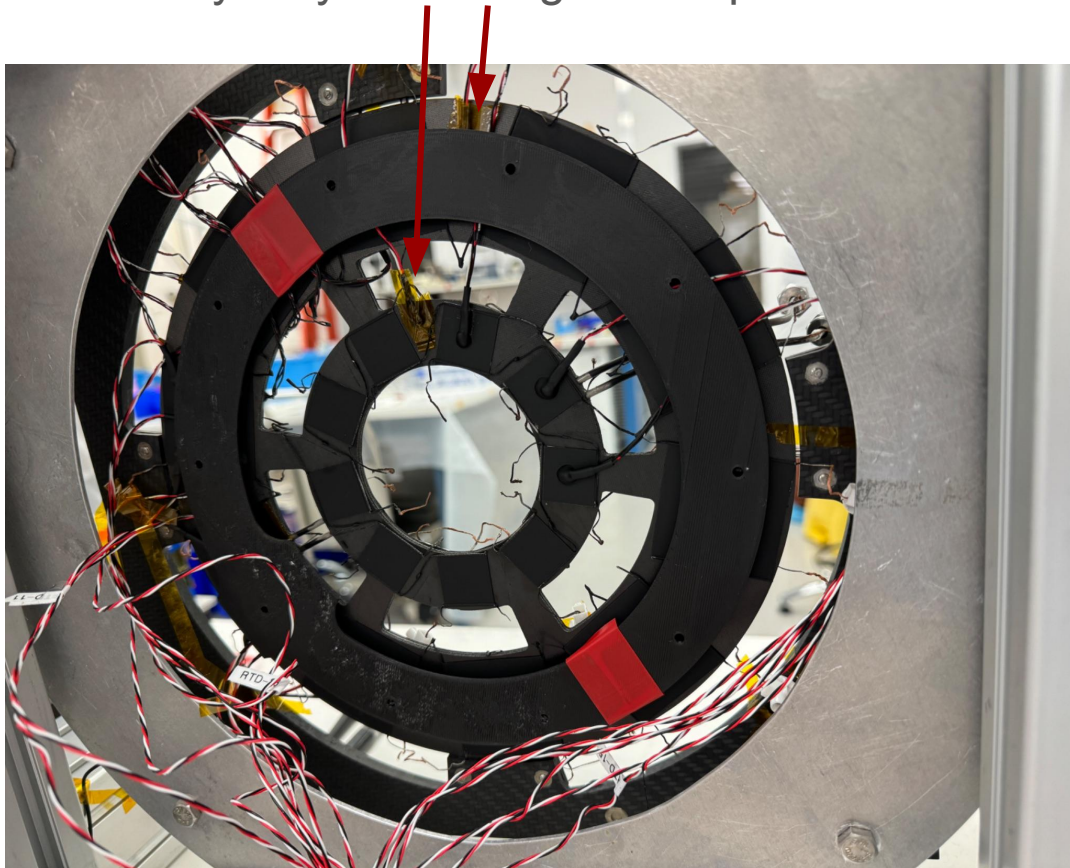


Configuration 1: no fan

Environmental sensors are taped, which is why they read a higher temp



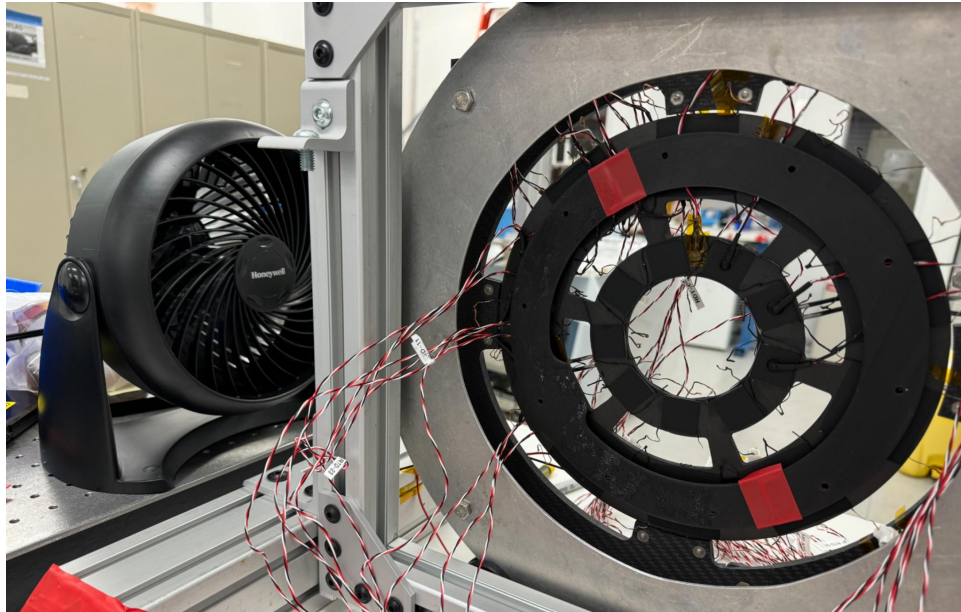
standoffs



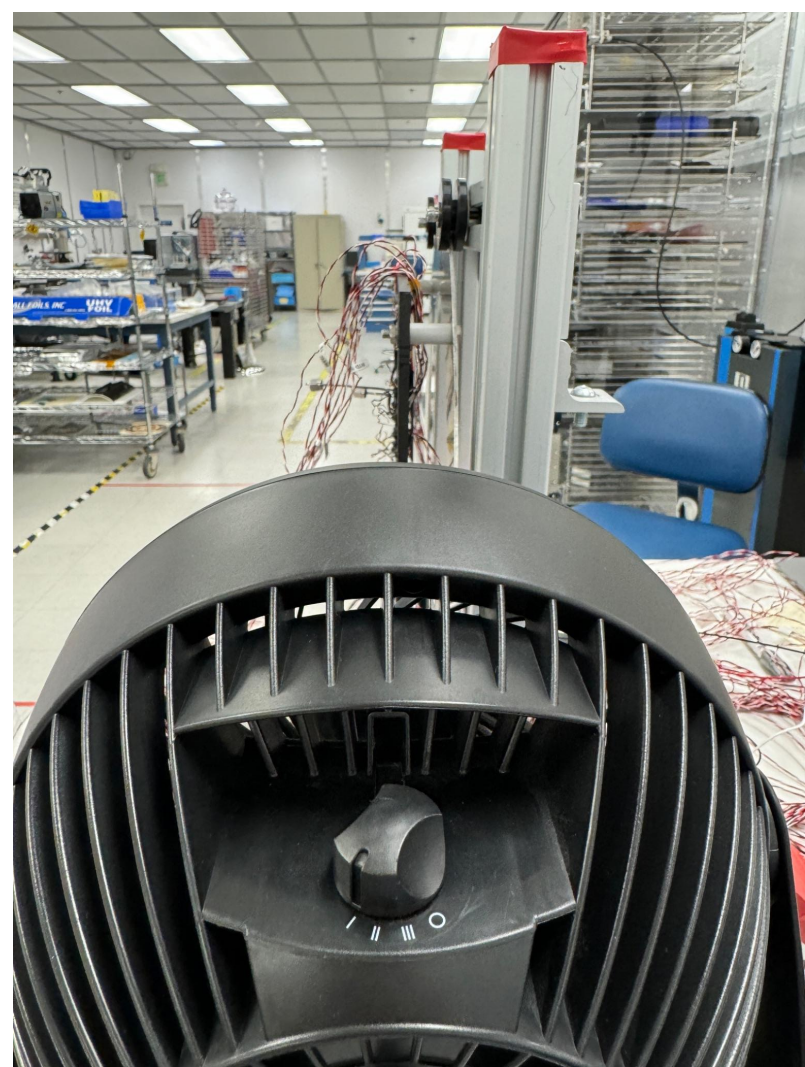
Side view

Configuration 2: fan on the side

On side nearest RTDs

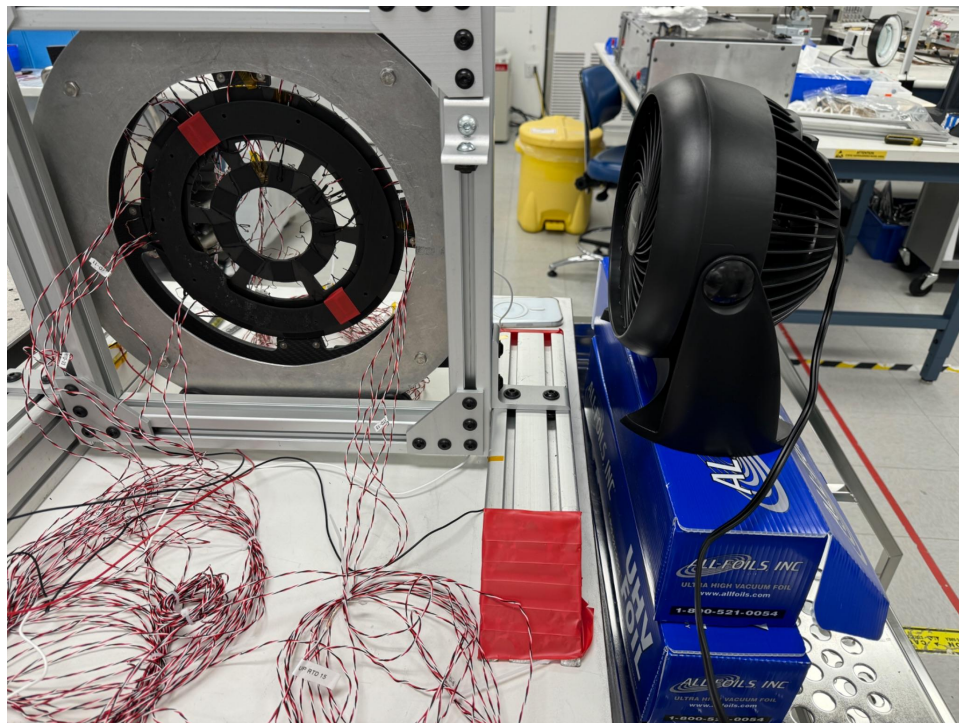


honeywell fan model MHD-5513M12-900



Configuration 3: fan on side

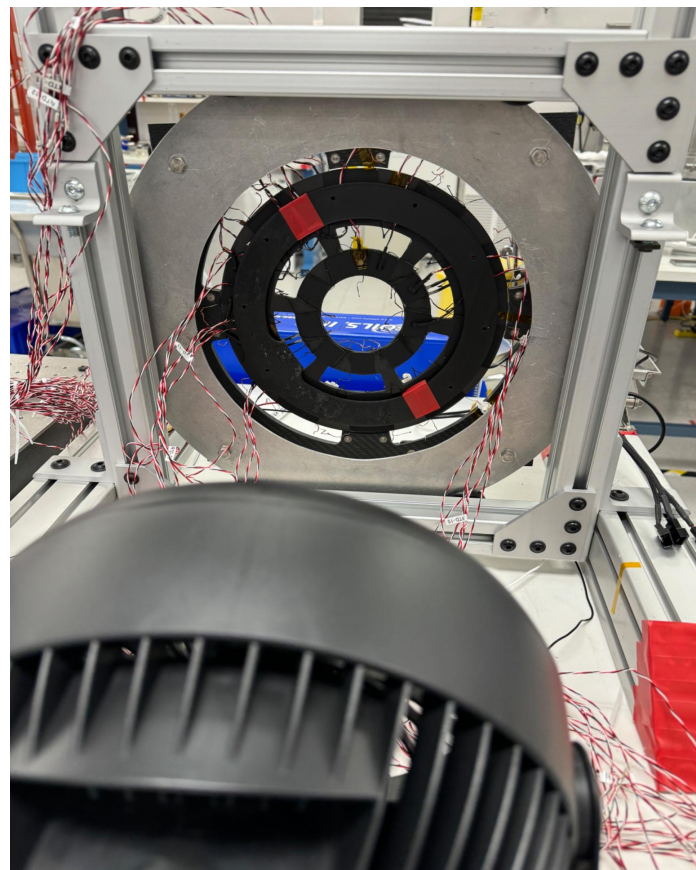
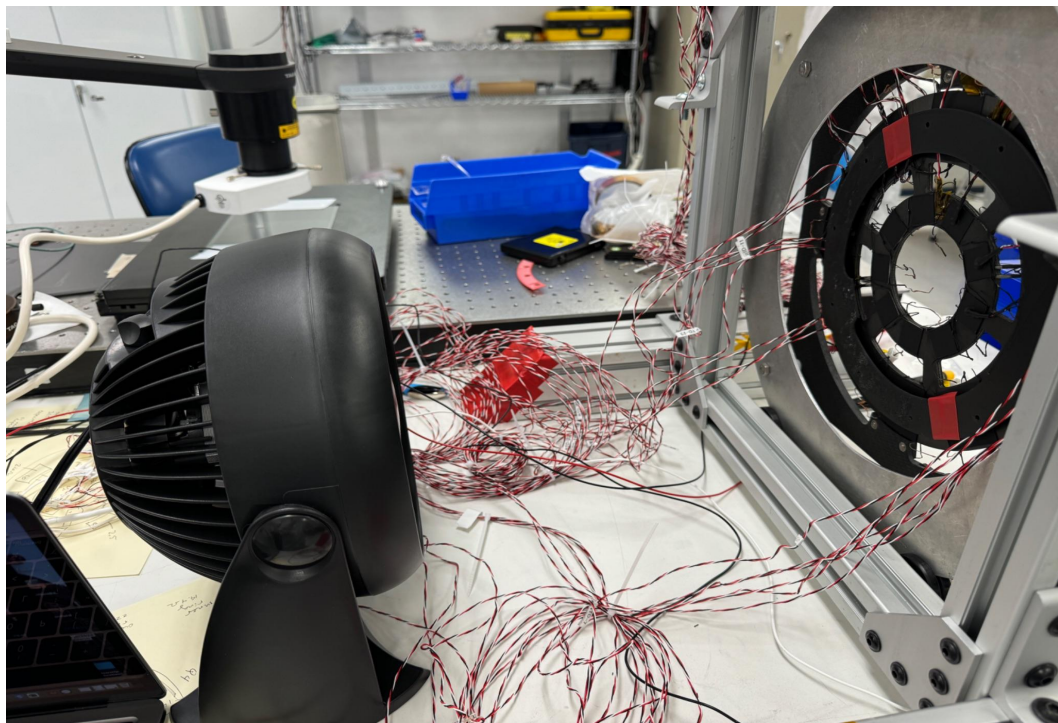
On side opposite the RTDs



Configuration 4: fan on opposite side

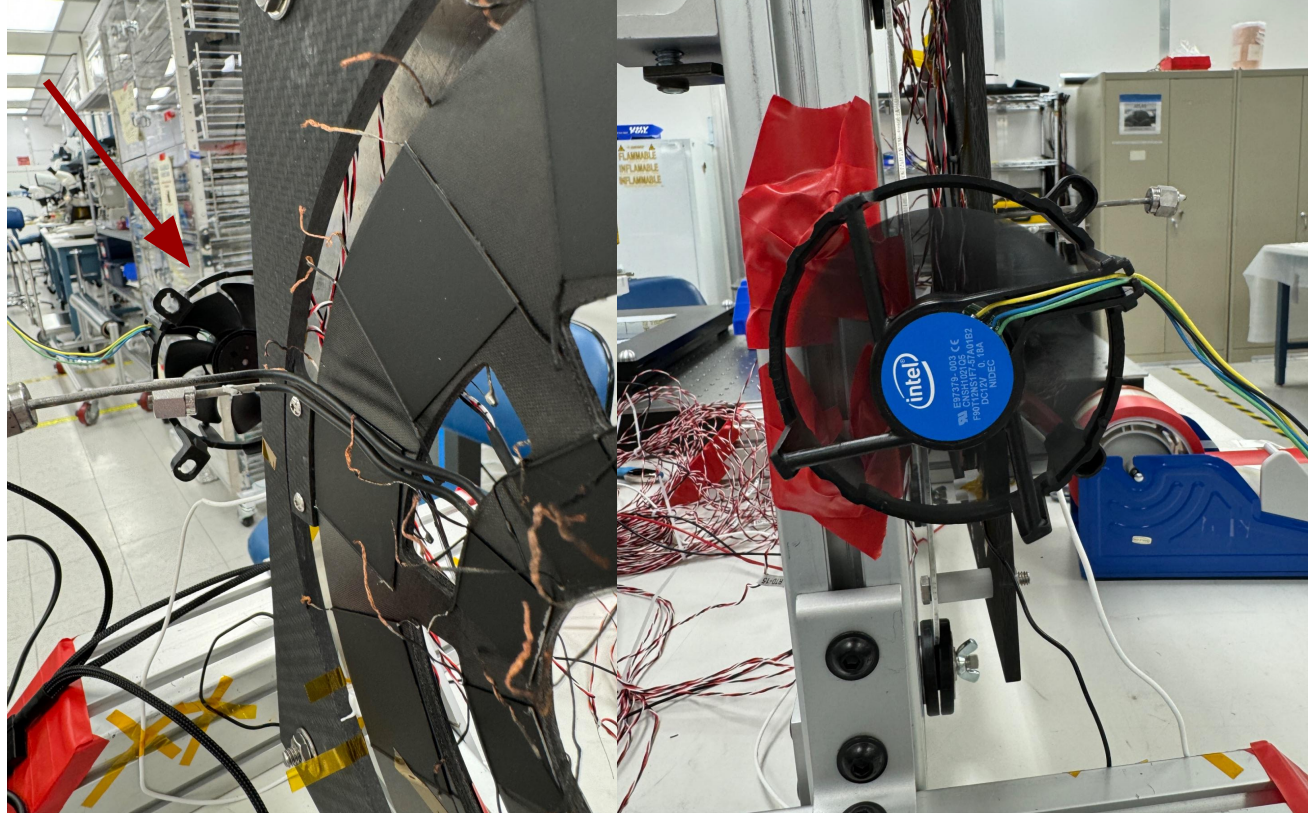


Configuration 5: fan face on to the heaters



Configuration 6: smaller fan

On opposite side of
the RTDs



fan intel E97379-003 CNSH1021Q5
DC12V 0.18A NIDEC