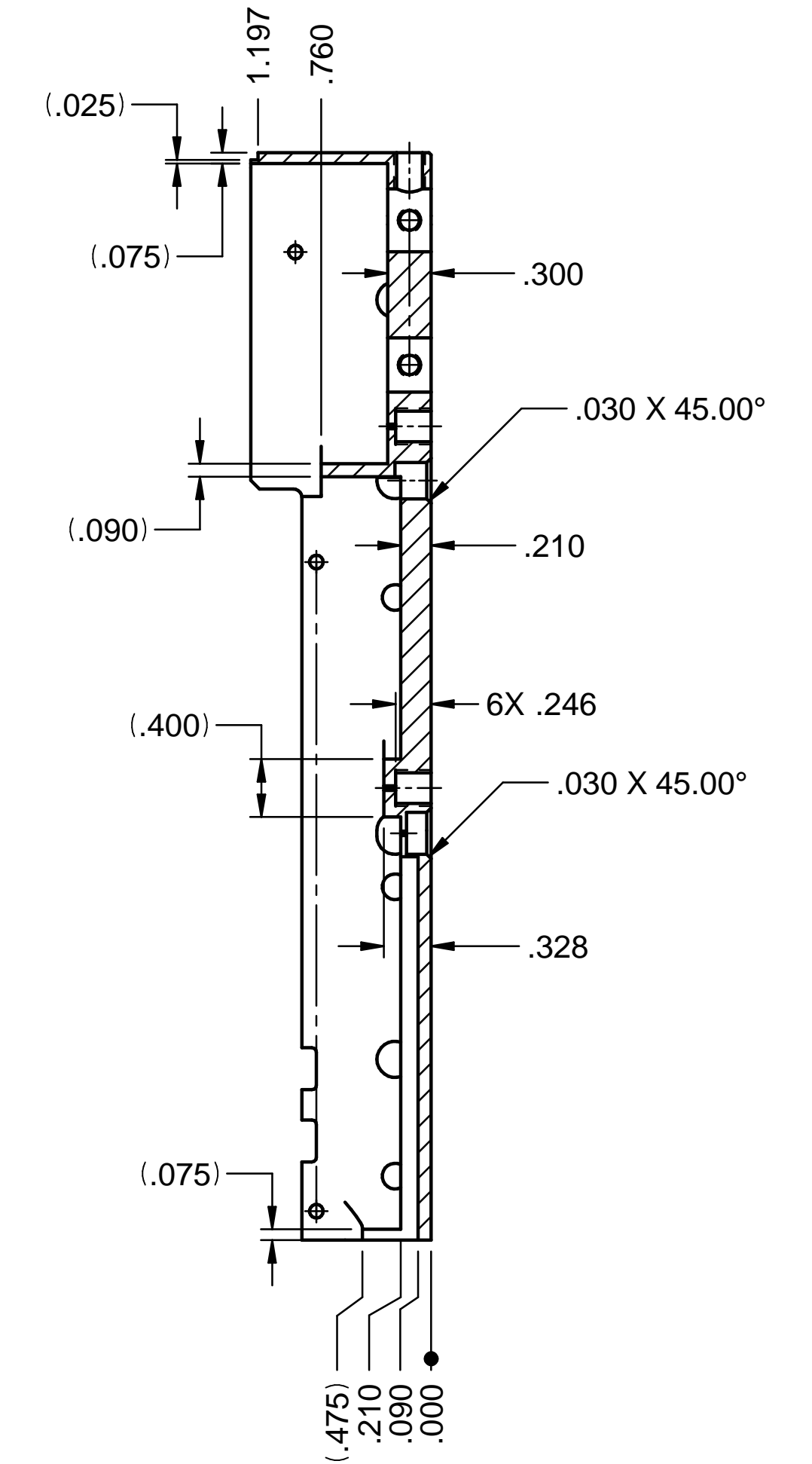
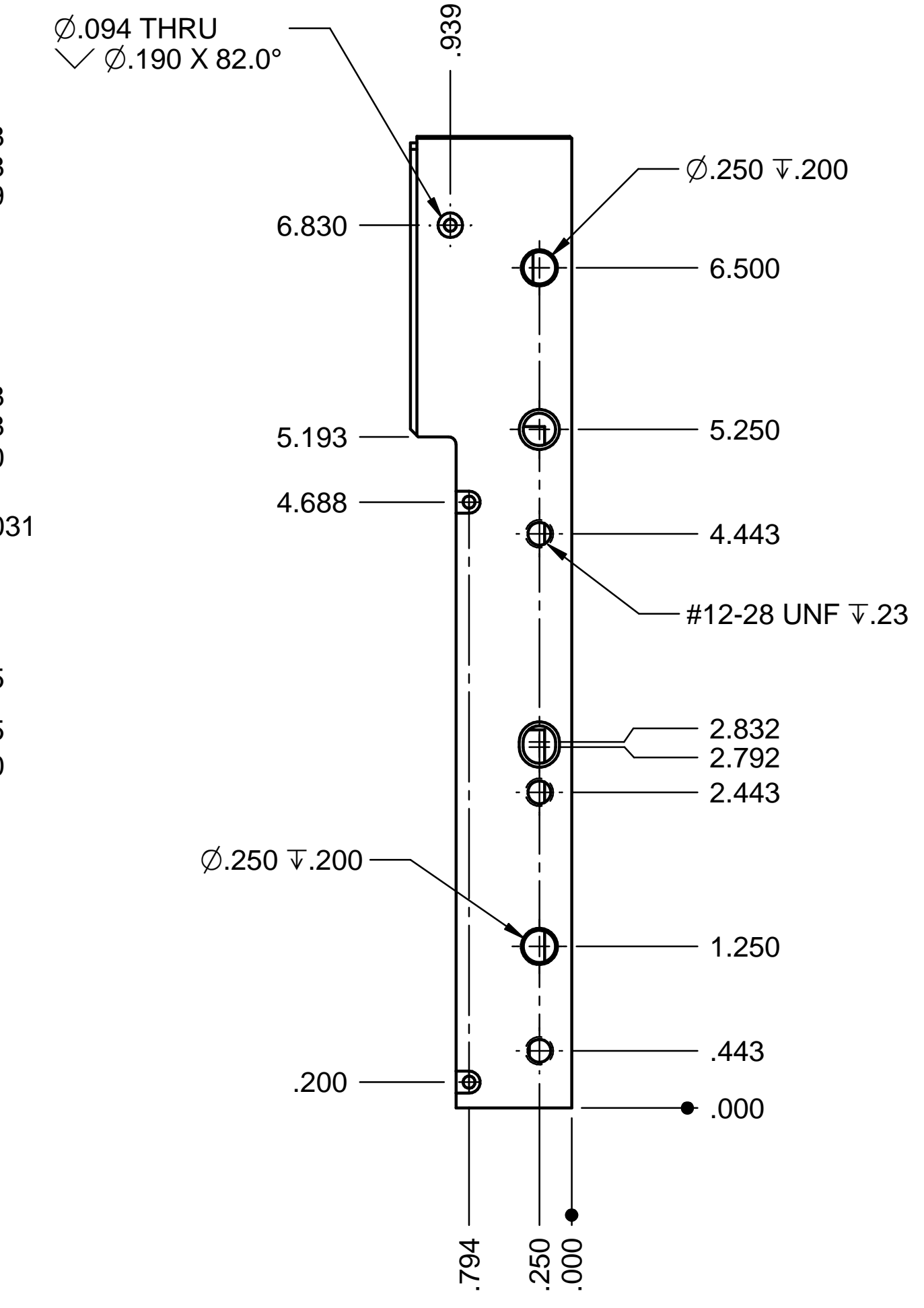
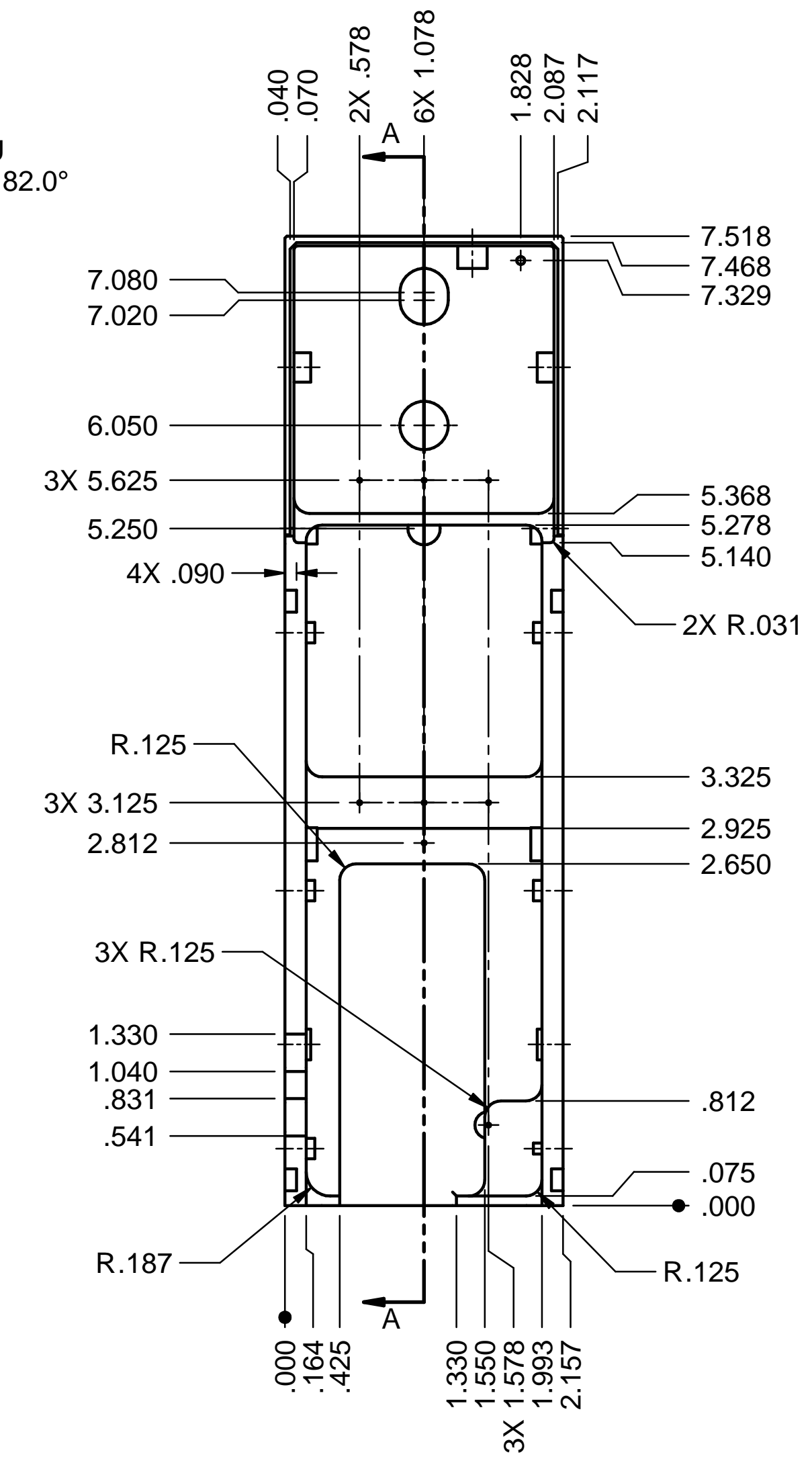
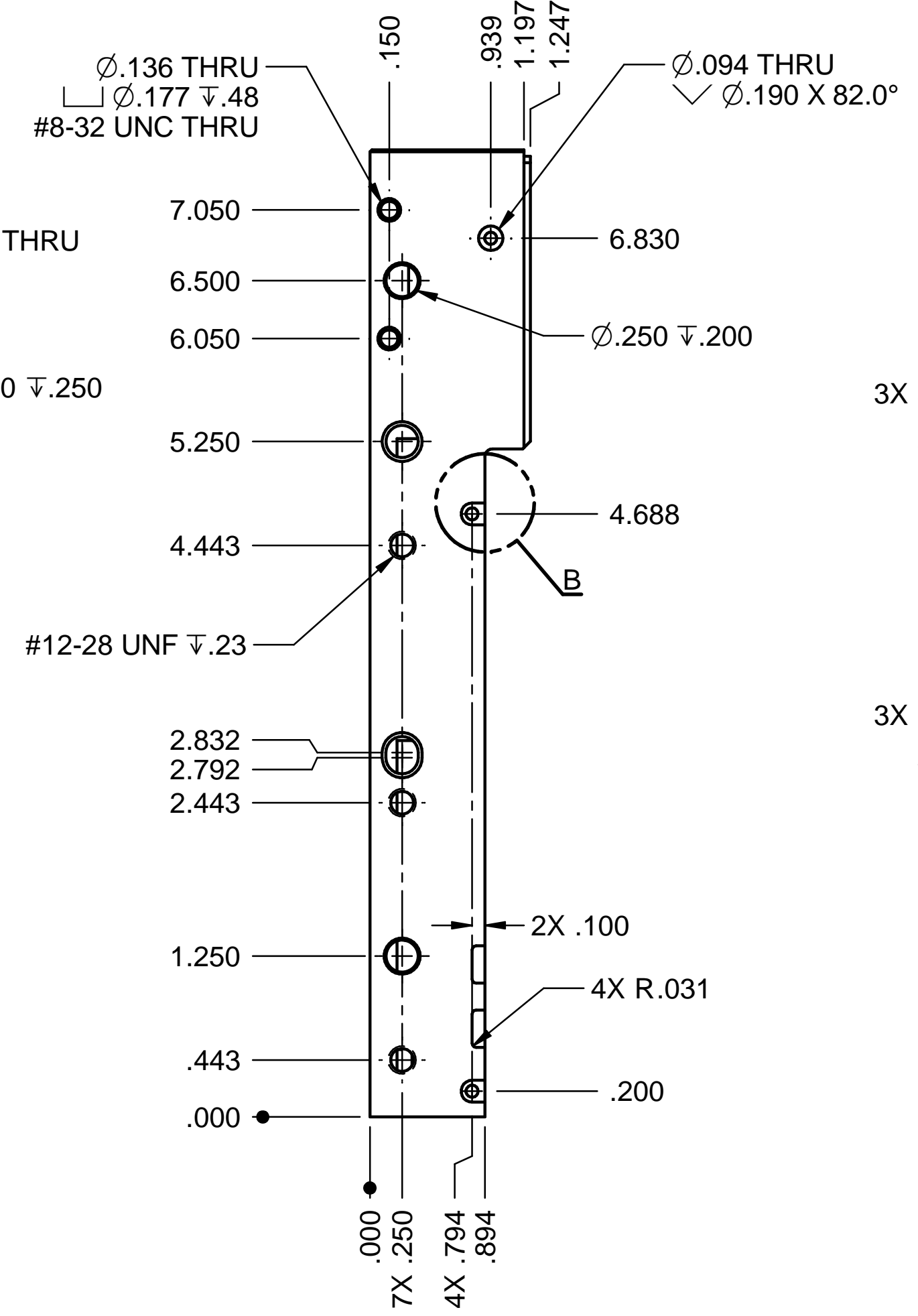
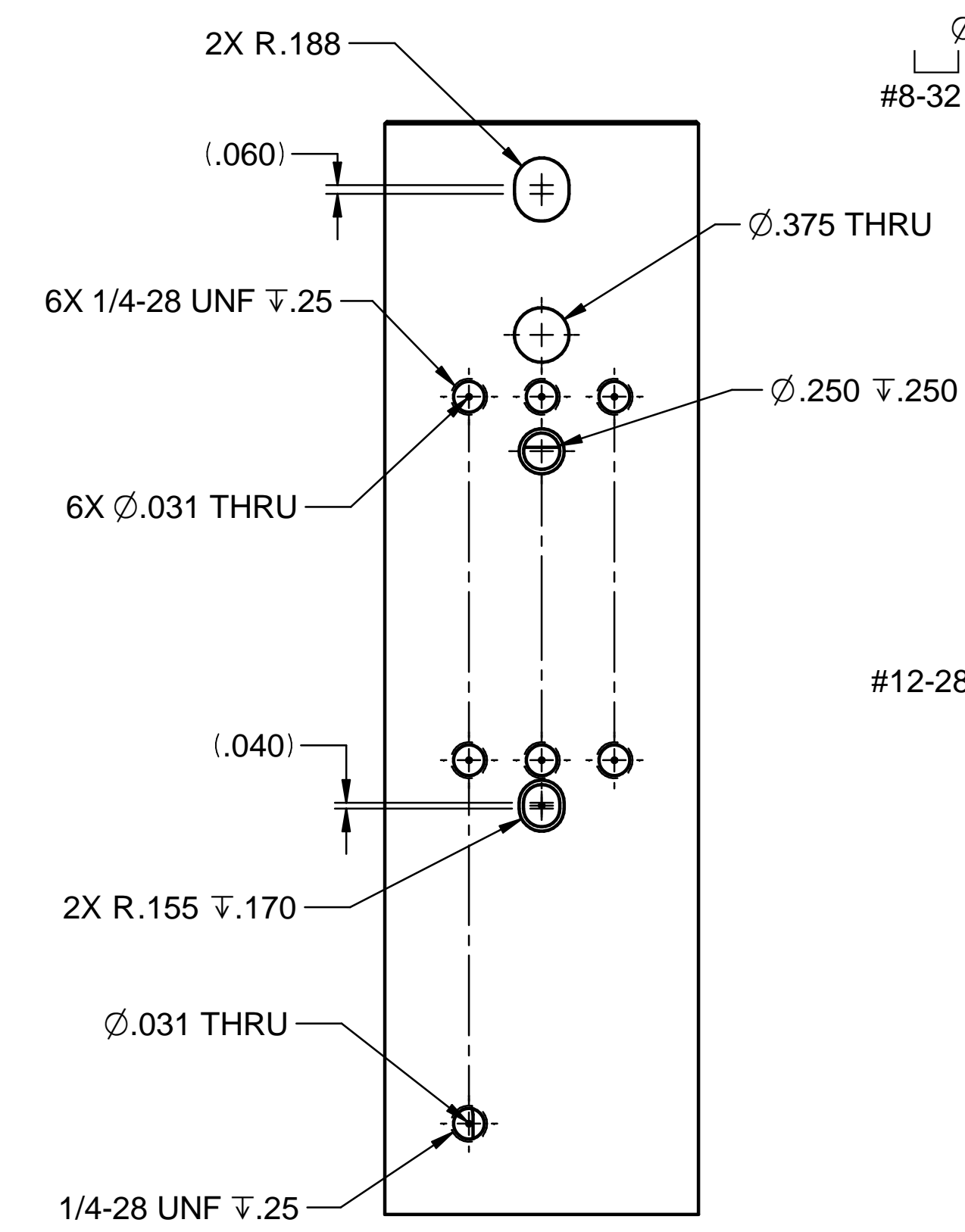
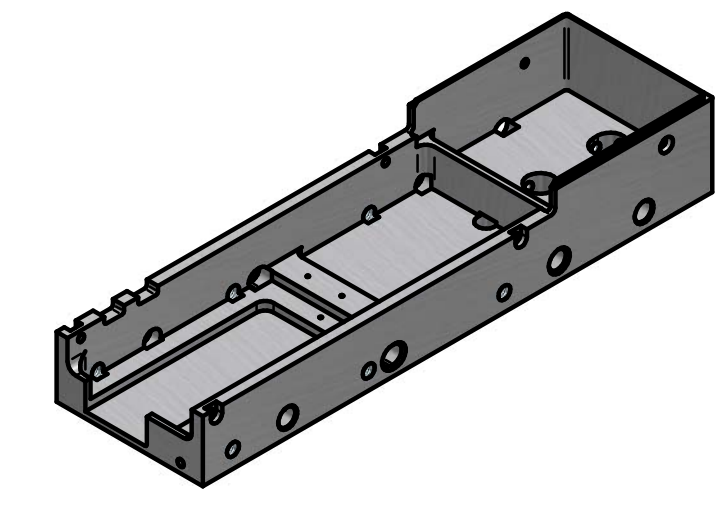
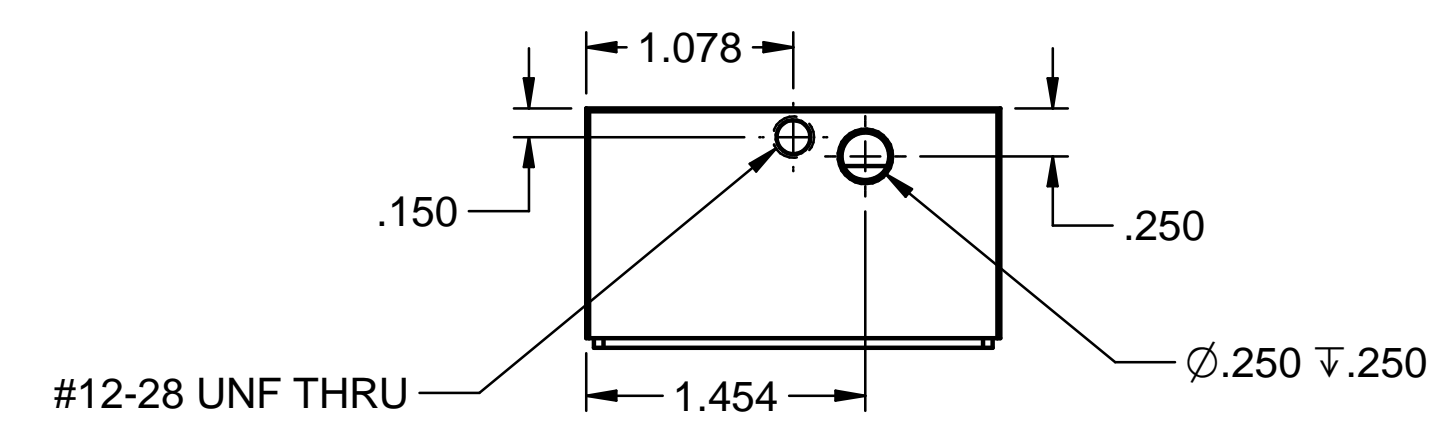


(4X) DETAIL B
4:1



SECTION A-A

- NOTES: UNLESS OTHERWISE SPECIFIED
- MACHINING: THE USE OF POLISHING, SANDING DISKS, ABRASIVE PAPER, OR GRINDING WHEELS IS PROHIBITED. MACHINE, DEBURR, AND POLISH PER SC-700-866-49.
 - LUBRICANTS: REFER TO SLAC SPEC SC-700-866-47 FOR A LIST OF APPROVED LUBRICANTS AND COOLANTS.
 - INSCRIBE OR ENGRAVE PART NUMBER AND REVISION APPROX WHERE SHOWN, .010 DEEP MAX.
 - MACHINE PROFILE FROM SOLID MODEL OF DRAWING DSG-000050419 FOR COMPLETE PRODUCT DEFINITION. REF - MFG & INSP: MACHINED DIMENSIONS APPLY AT 20°C.
 - UHV HANDLING: AFTER UHV CLEANING OR PLATING, HANDLE WITH CLEAN LATEX OR NITRILE GLOVES IN/ON A CLEAN ROOM/SURFACE. FOR STORAGE OR SHIPPING: PLACE IN CLEAN, SEALED, VAC GRADE PLASTIC BAGS THAT ARE BACK-FILLED WITH NITROGEN, WITH PART NUMBER AND REV VISIBLE. ALTERNATIVELY, PARTS MAY BE WRAPPED IN CLEAN LINT FREE TISSUE AND UHV FOIL, AND SEALED IN CLEAN PLASTIC BAGS WITH PART NUMBER AND REV VISIBLE.

CHECK-PRINT
 dgeranen
 12-02-2022 04:15:55 PM

ALUMINUM ALLOY 6061-T651	
STOCK NO	MATERIAL DESCRIPTION
ESTIMATED MASS: .485 LB	DWG TYPE: PART
LCLS DETECTORS SYSTEM SENSOR MODULE ASSY REAR COVER	
DRAWING NUMBER DSG-000050419	REVISION NUMBER 00

DIMENSIONING AND TOLERANCING IS IAW ASME Y14.5-2009		SCALE: 1:1 DO NOT SCALE DRAWING
UNLESS OTHERWISE SPECIFIED DIMENSIONS ARE IN INCHES. TOLERANCES: BREAK EDGES .005-.015 INTERNAL CORNERS R.015 MAX FRACTIONS ± --- DEC .XX ± .01 .XXX ± --- .XXXX ± --- ANGLE ± ---		32 ALL SURF
NEXT ASSEMBLIES:		ENGR M ORIUUNNO DWN GERANEN CHKR ---