



JLAB/LCLS-II VDI Access

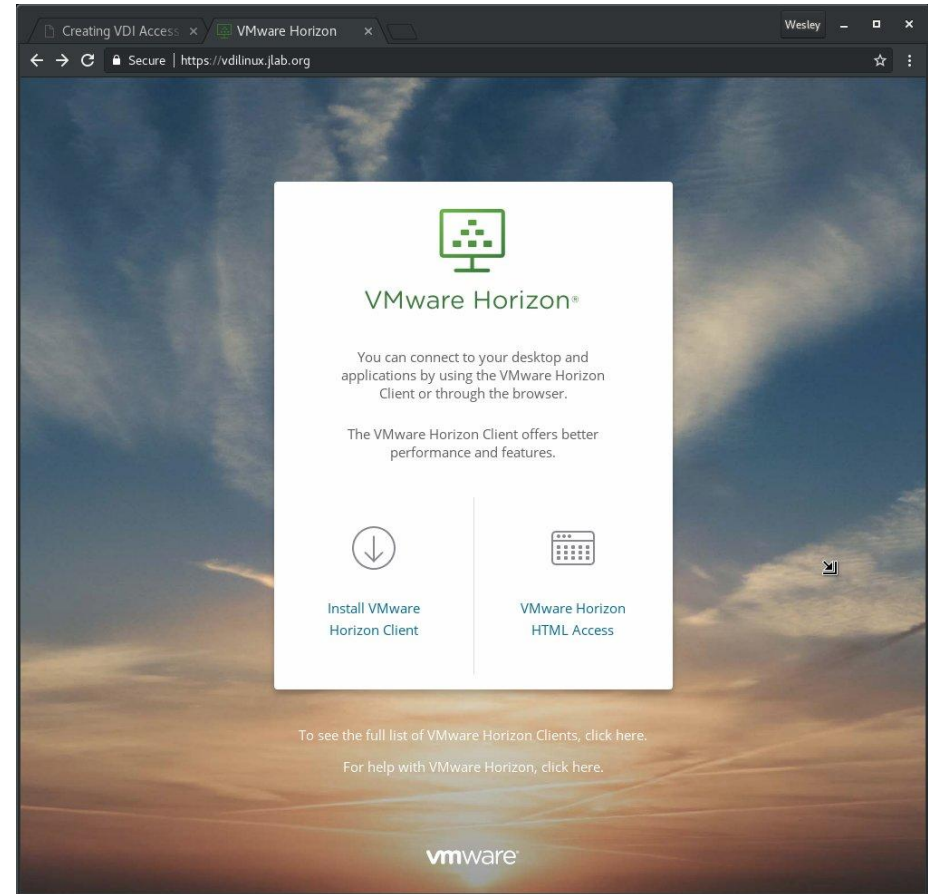
Wesley Moore
JLAB CNI

Horizon Client App

WARNING - 2-Factor authentication is required in a later step. Ensure you have SafeNet correctly configured.

- Once added to the 'mobilepass' netgroup, check JLAB email account for enrollment instructions
- Contact Wesley Moore (wmoore@jlab.org)

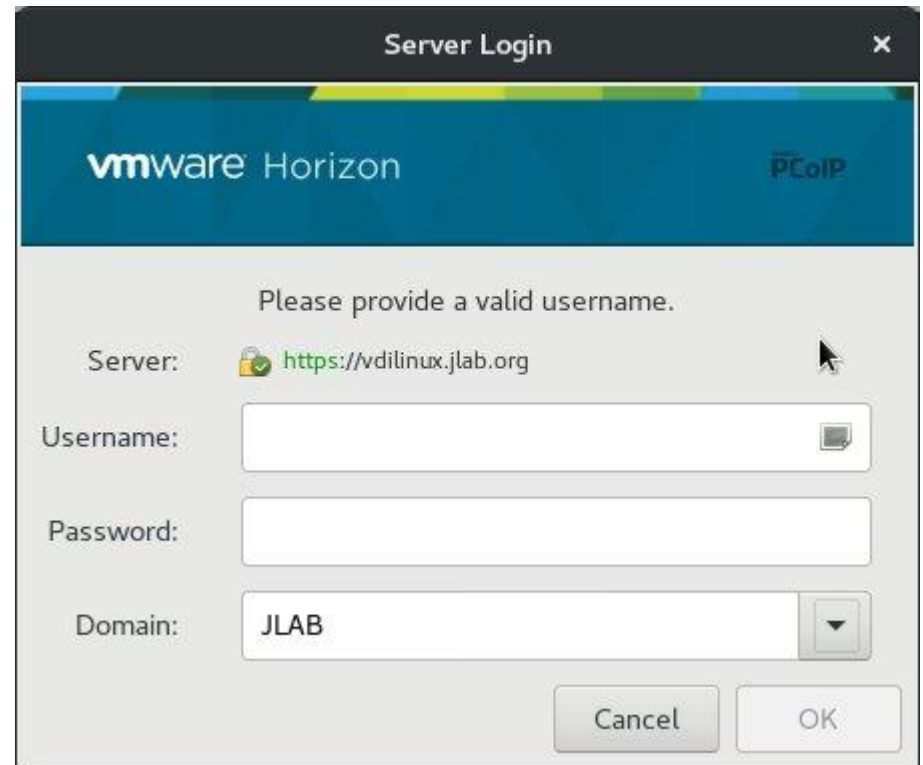
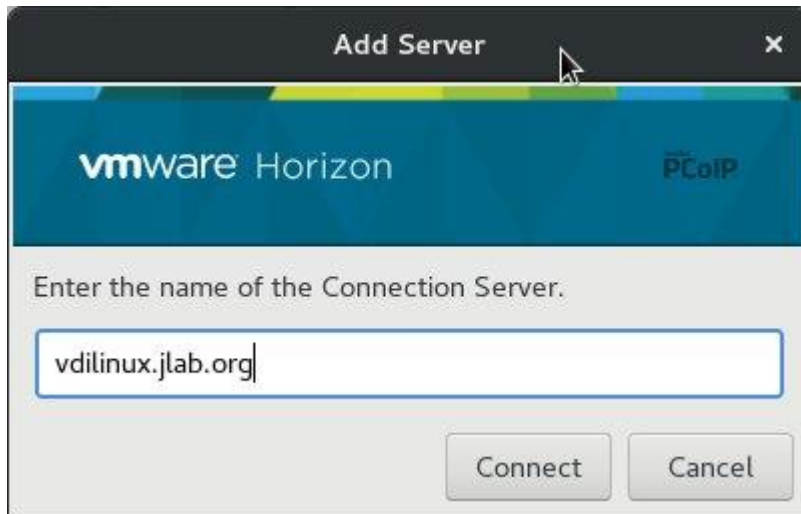
- To download the VMware Horizon Client: <https://vdilinux.jlab.org>
- Go to "Install VMware Horizon Client". *This will link you to a VMware page.*
- Find and install client for your host OS.



VDI Connection Server

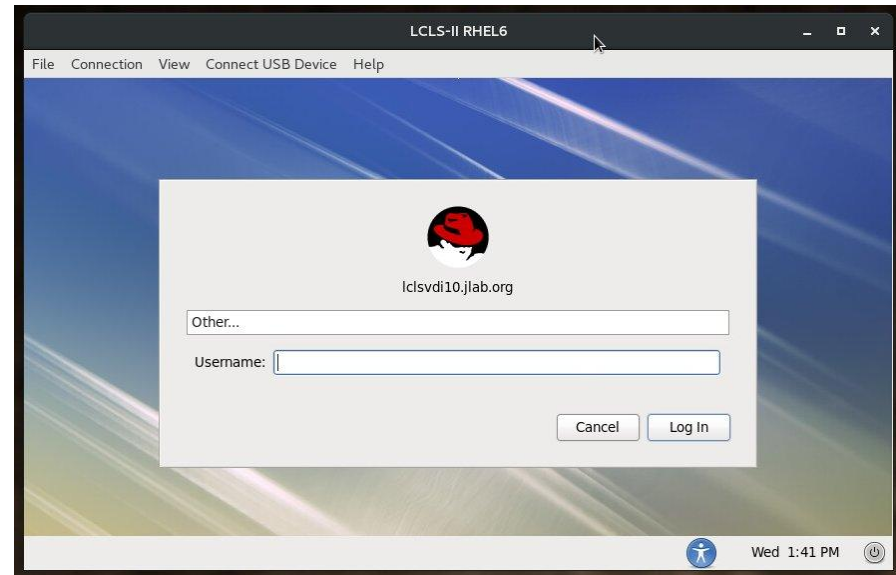
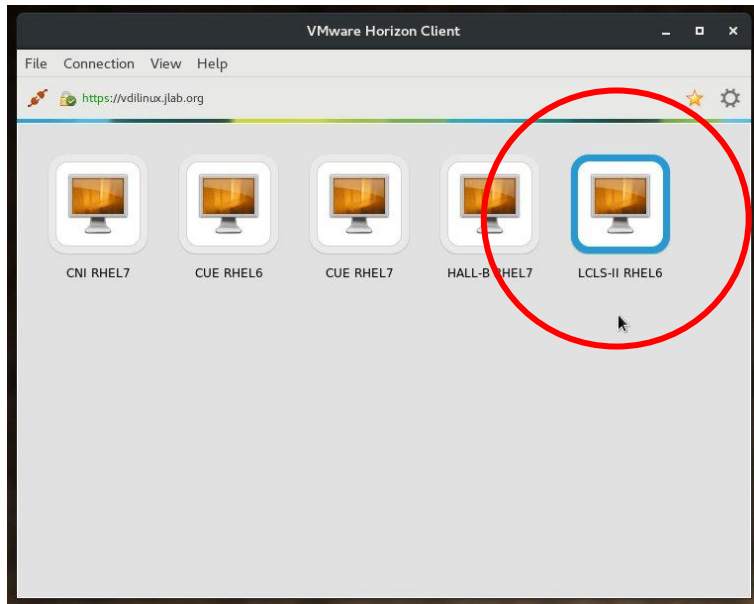
Once you run the Horizon Client app...

- Add Server
 - vdilinux.jlab.org
- Login uses:
 - CUE username
 - CUE password
 - JLAB Domain



VDI VM Login

- Once logged in, you should see several VDI pools. Likely, these 3:
 - CUE RHEL6
 - CUE RHEL7
 - LCLS-II RHEL6
- Connect to **LCLS-II RHEL6**,
 - If you don't see this option, you need to be added to the 'lclsvdi' netgroup. Contact Wesley Moore (wmoore@jlab.org)
- VM login requires **2-Factor authentication**
 - Select "Other..."
 - Use CUE username
 - For password, use pin+passcode
 - 6-digit pin you created
 - 6-digit passcode from SafeNet app
 - Example: 123456452187



Notes

- Once logged in, you should have:
 - Direct ssh access to associated servers and control room workstations.
 - Example: `ssh softegr@lclsapp1` (Please ask Ken Brobeck or Wesley Moore to provide you access to softegr and laci accounts).
 - Direct rdp access to associated PLC PCs.
 - Example: `rdesktop lclsw01`
- All associated systems use your CUE username and password. 2-factor is only required at the border. In this case, the border is the VDI virtual machine.
- **All internet access is through a proxy**
 - This includes git, yum, pip, wget, etc.
 - Almost all SSL traffic is decrypted and reencrypted.
 - For issues related to these, contact Wesley Moore (wmoore@jlab.org)
- Disconnecting leaves your session open, logging out doesn't.
 - If your internet connection breaks, you should be able to reconnect and pick up where you left off.