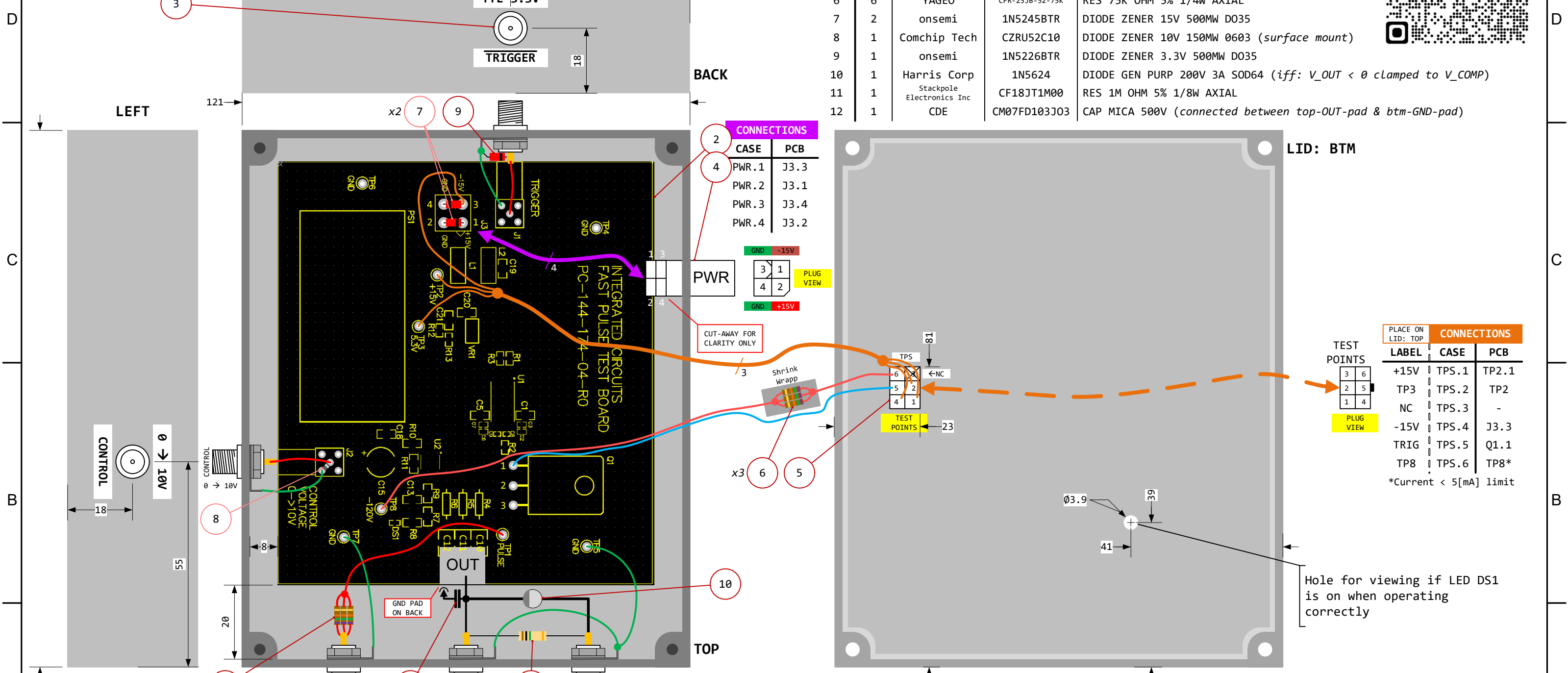
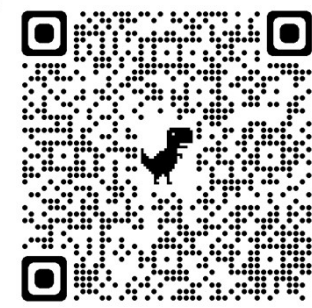


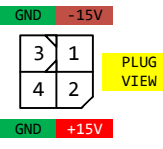
Safety Case for: PC-144-174-04-R0 (PCB: *Fast Pulse Test Board*)

ITEM	# of	MNFCTR	P/N	DESCRIPTION
1	1	Hammond	1590X	BOX ALUM UNPTD 5.717"L X 4.772"W
2	1	SLAC	-	PC-144-174-04-R0: FAST PULSE TEST BOARD
3	5	Showme Cables	1544	SMA-F
4	1	Molex	0039012046	CONN PLUG HSG 4POS 4.20MM
5	1	Molex	0430200600	CONN PLUG HSG 6POS 3.00MM
6	6	YAGEO	CFR-25JB-52-75K	RES 75K OHM 5% 1/4W AXIAL
7	2	onsemi	1N5245BTR	DIODE ZENER 15V 500MW D035
8	1	Comchip Tech	CZRU52C10	DIODE ZENER 10V 150MW 0603 (<i>surface mount</i>)
9	1	onsemi	1N5226BTR	DIODE ZENER 3.3V 500MW D035
10	1	Harris Corp	1N5624	DIODE GEN PURP 200V 3A SOD64 (<i>iff: V_OUT < 0 clamped to V_COMP</i>)
11	1	Stackpole Electronics Inc	CF18JT1M00	RES 1M OHM 5% 1/8W AXIAL
12	1	CDE	CM07FD103J03	CAP MICA 500V (<i>connected between top-OUT-pad & btm-GND-pad</i>)



CONNECTIONS

CASE	PCB
PWR.1	J3.3
PWR.2	J3.1
PWR.3	J3.4
PWR.4	J3.2

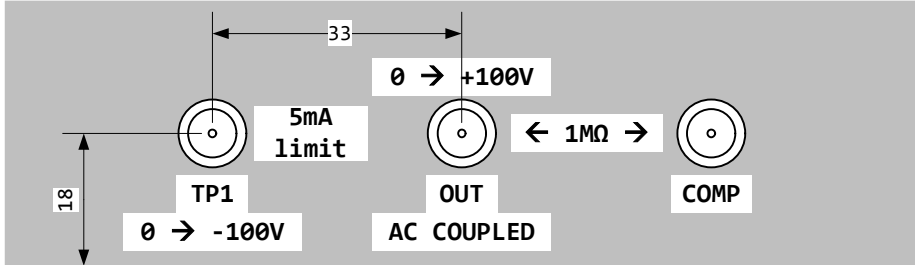


CONNECTIONS

PLACE ON LID: TOP	CASE	PCB
TPS.1	TPS.1	TP2.1
TPS.2	TPS.2	TP2
TPS.3	TPS.3	-
TPS.4	TPS.4	J3.3
TPS.5	TPS.5	Q1.1
TPS.6	TPS.6	TP8*

*Current < 5[mA] limit

OPERATING WARNING:
 PCB parts C10 to C12 (Vishay PN: VJ1812Y334KXCAT) have a voltage limit of 200V.
 $|V_{TP1} - V_{COMP}| \leq 0.8 * 200[V]$



Scale 1:1 Units: mm Print Size: B 1 of 1

SLAC U.S. DEPARTMENT OF ENERGY Office of Science

Fast Pulser Case for PC-144-174-04-R0

ENGR	DATE	APPROVALS
Scott T. Block	4/20/2023	
Scott T. Block	4/20/2023	
Scott T. Block	4/24/2023	

SA-261-101-34-C00