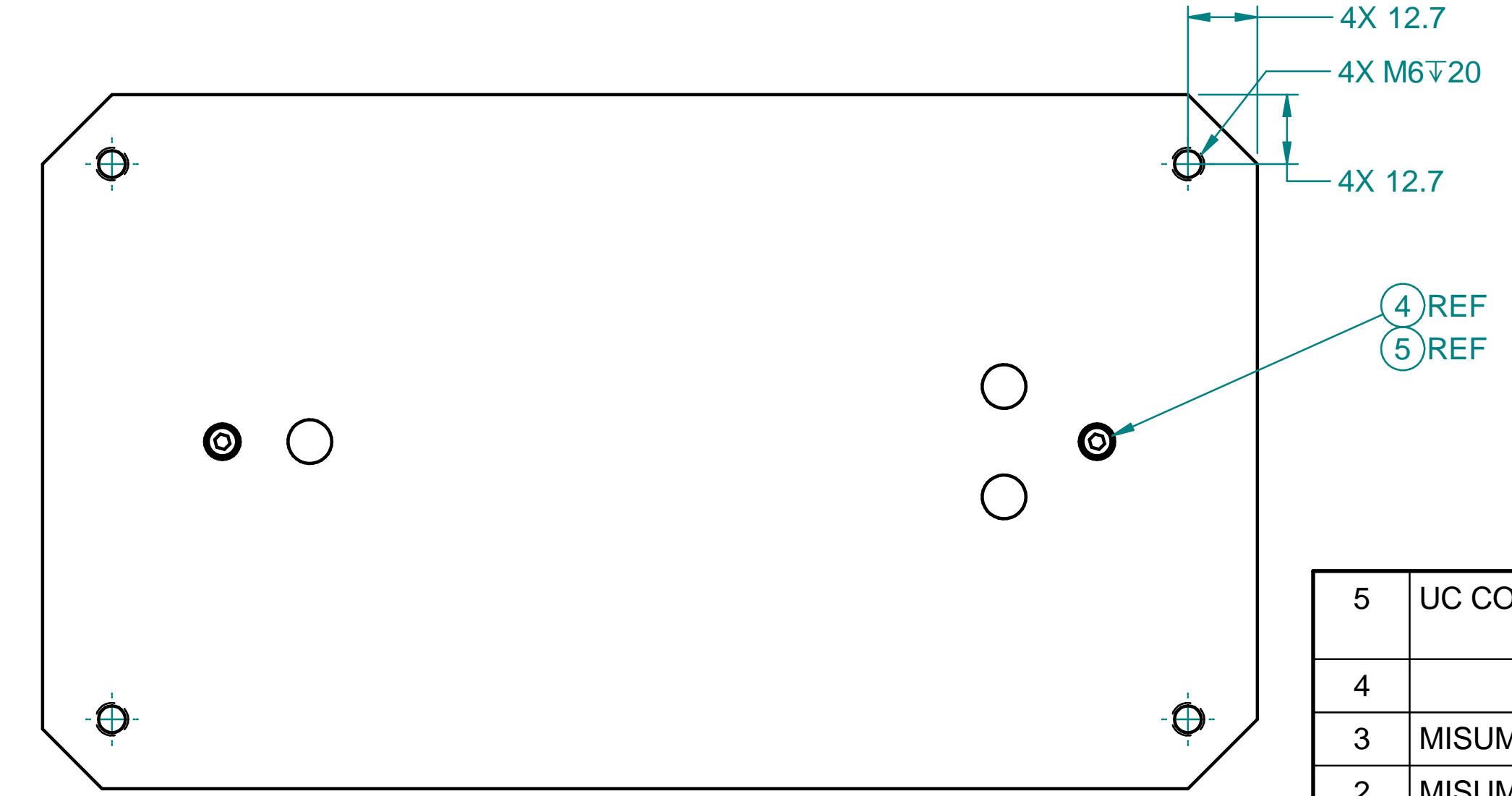
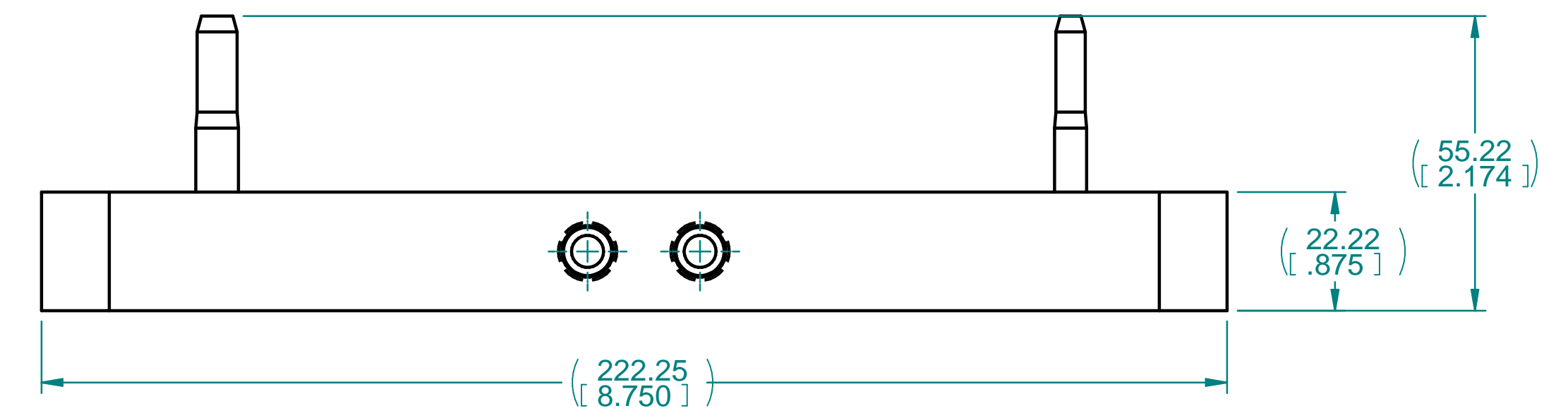
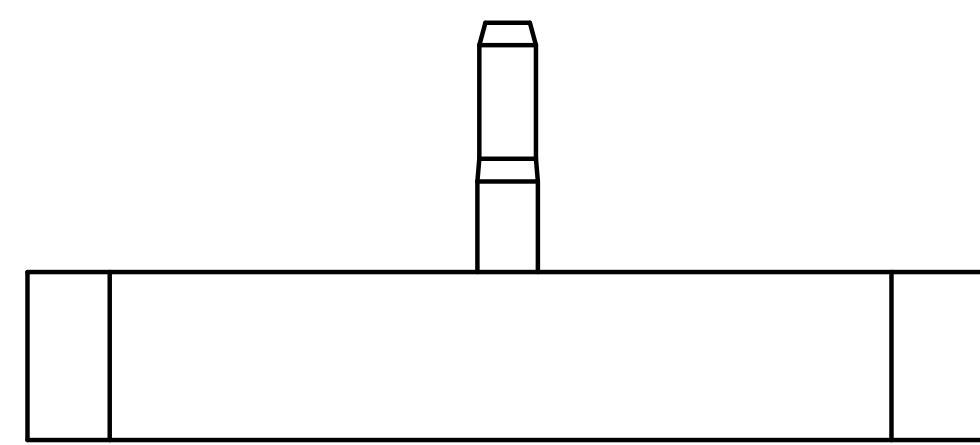
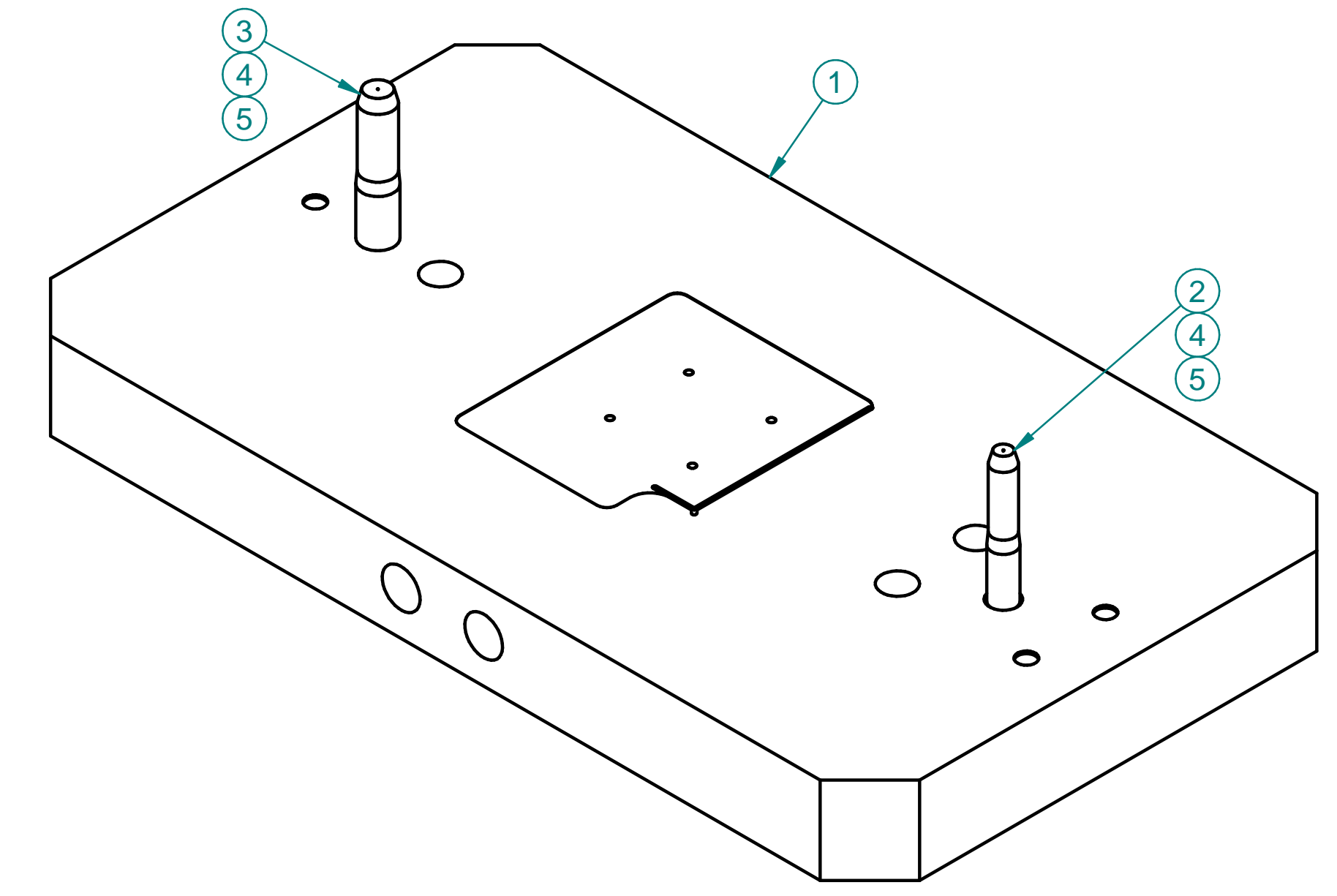
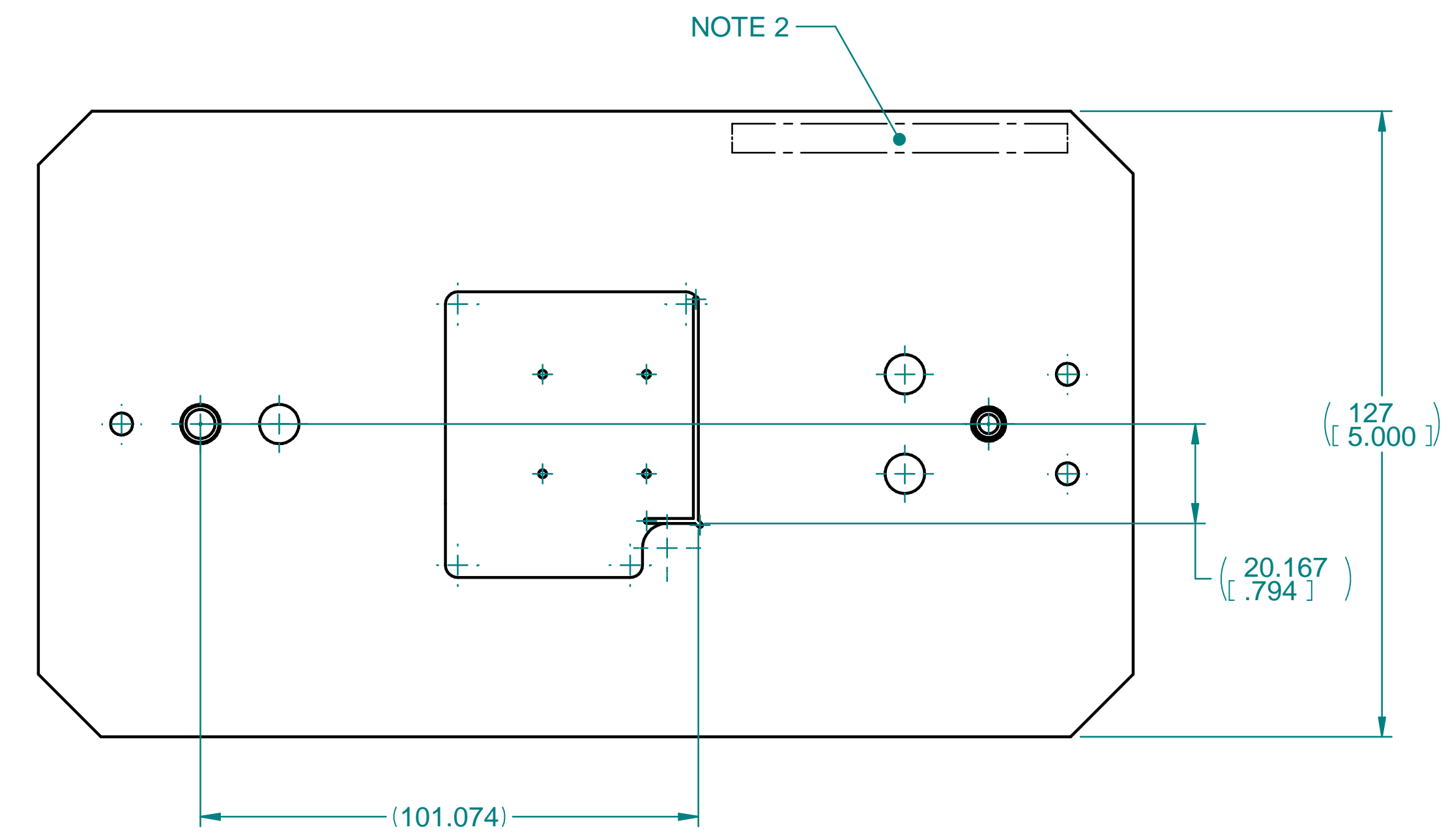


NOTES UNLESS OTHERWISE SPECIFIED:

1. MATERIAL: SEE TABLE. DO NOT SUBSTITUTE.
2. EMBOSS OR ENGRAVE PART AND REVISION NUMBER APPROX. WHERE SHOWN.
3. INSTALL PINS AS SHOWN. ALL DIMENSIONS APPLY AFTER PINS INSTALLED.
4. DEGREASE WITH ALCOHOL AND CUSHION TO PROTECT FROM HANDLING DAMAGE.

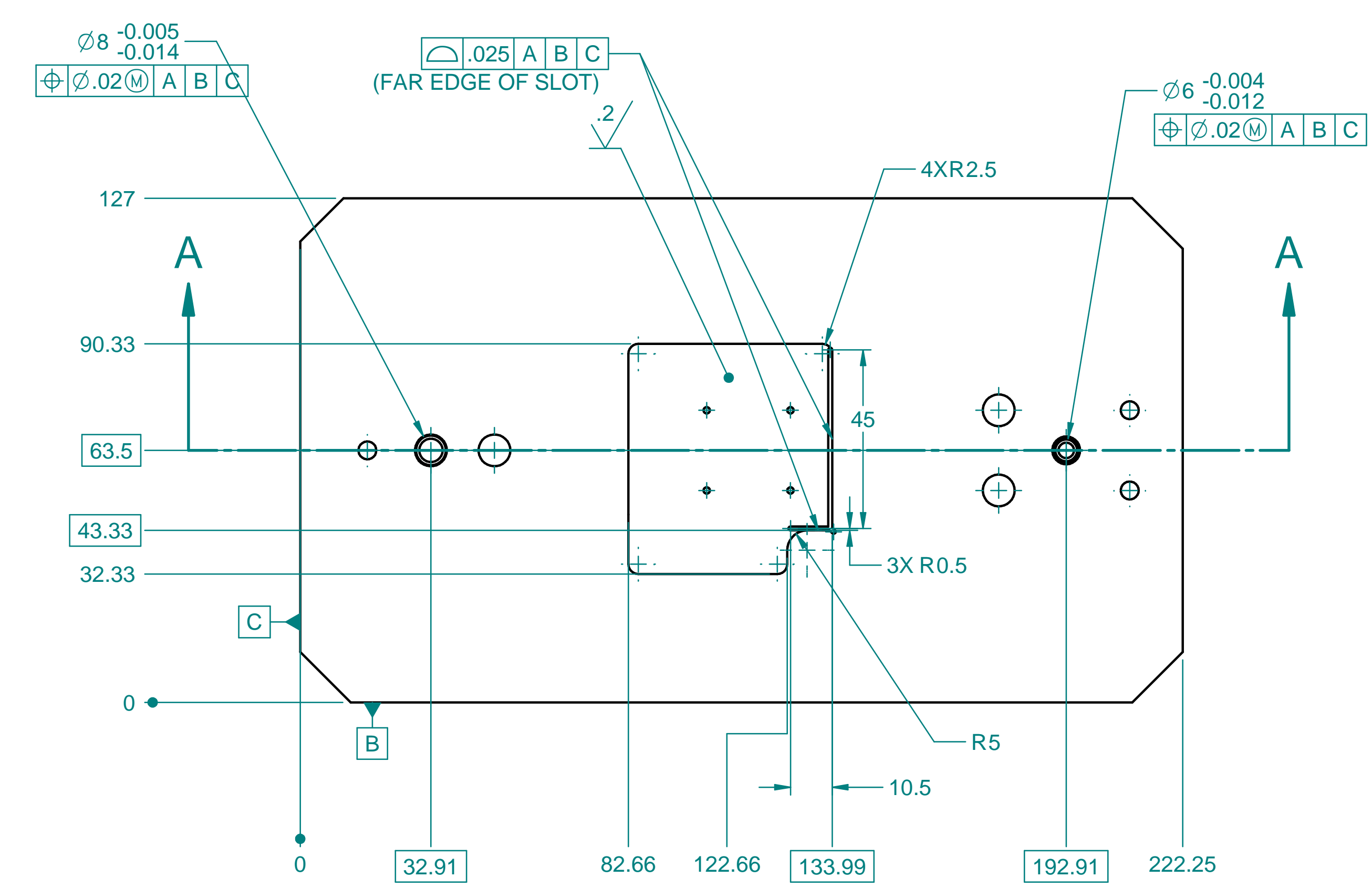
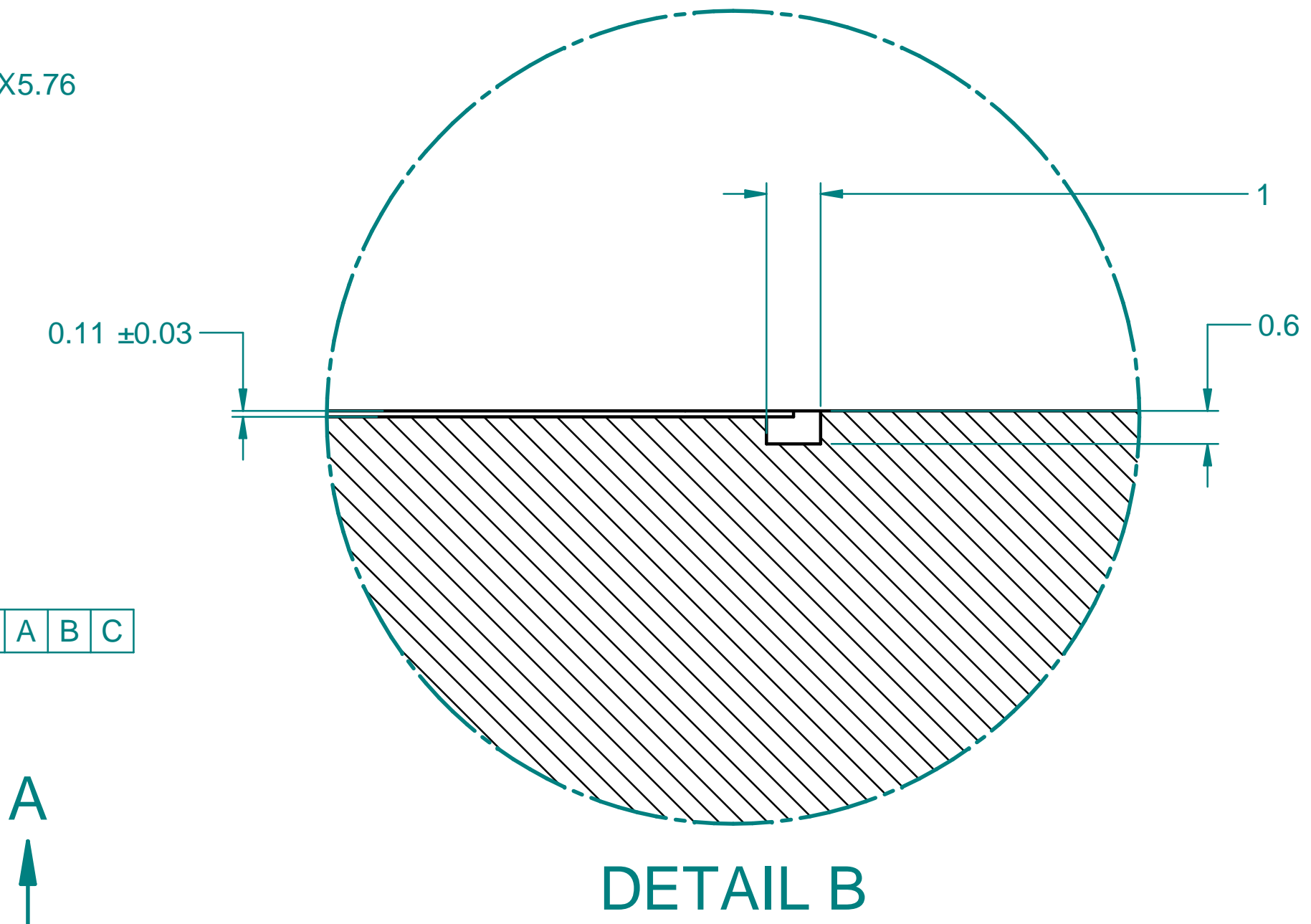
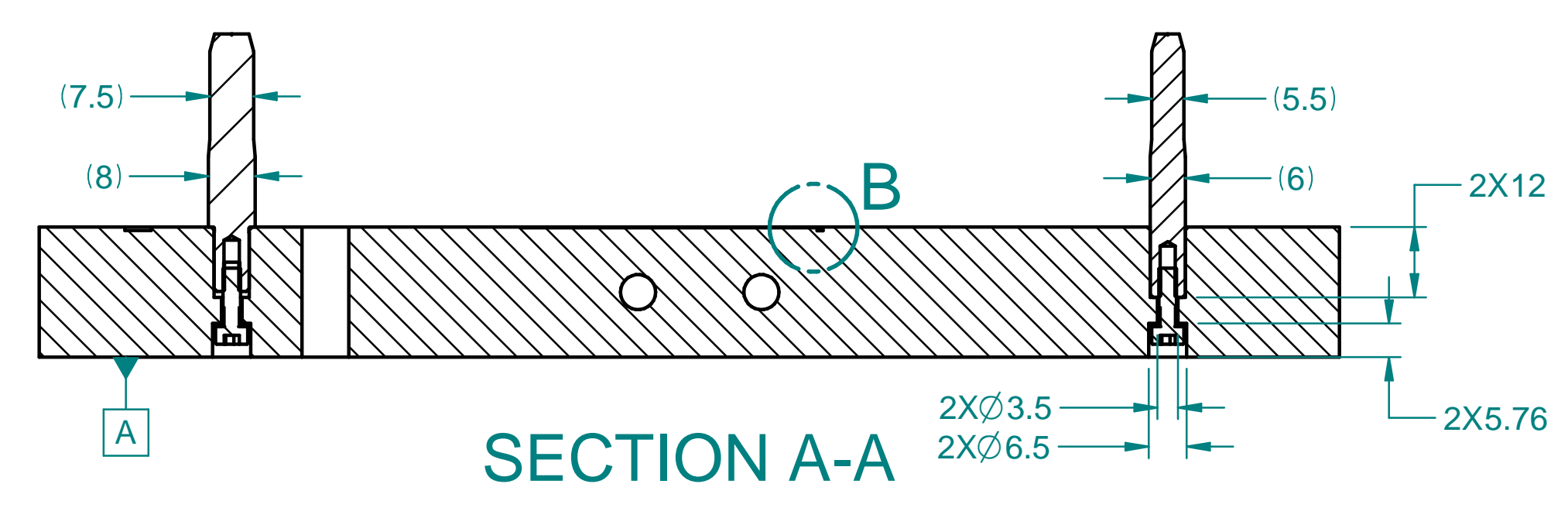
CHECK-PRINT
newbry
03-03-2022 03:15:54 PM



ITEM	NUMBER	DESCRIPTION	QTY
5	UC COMPONENTS MC -310-NW	SCREW, CAP, SKT HD, M3X0.5 X 10mm, SST 316, COATED WS2	2
4		WASHER, FLAT, NAR, M3, SST	2
3	MISUMI HWPG6-P8.00-Q7.50-L11-B12.0-E3.0-F15.0	DOWEL PIN, STEPPED, 8 OD, H7 TOL., SST	1
2	MISUMI SWPG6-P6.00-Q5.50-L12-B12.0-E3.0-F15.0	DOWEL PIN, STEPPED, 6 OD, H7 TOL., SST	1
1		304 SST	1

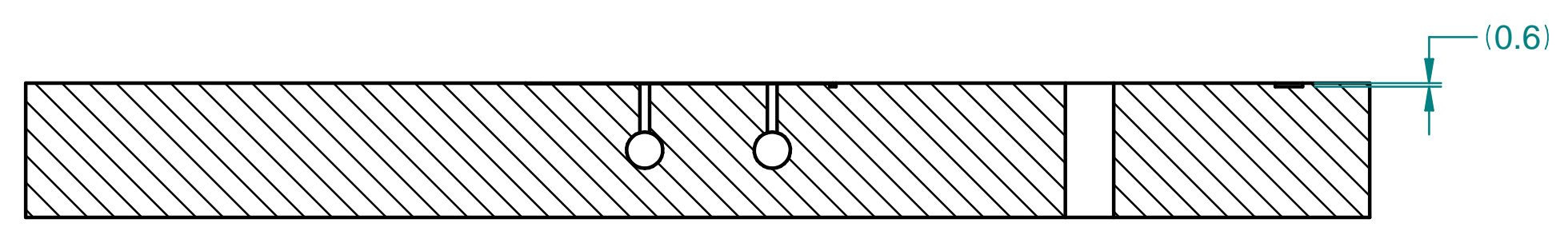
DIMENSIONING AND TOLERANCING IS IN ACCORDANCE WITH ASME Y14.5-2009		SCALE: 1:1 DO NOT SCALE DRAWING	ESTIMATED MASS: 4.74 kg	DWG TYPE: PART																				
UNLESS OTHERWISE SPECIFIED DIMENSIONS ARE IN MILLIMETERS		ATLAS INNER PIXEL MECH 19-1 OB STAVE LOADING PICK UP TABLE, RD53a QUAD																						
TOLERANCES: BREAK EDGES 0.13 - 0.4 INTERNAL CORNERS R 0.4 MAX ANGLE ± 1° ALL SURF 0.8		THE DRAWINGS, SPECIFICATIONS AND OTHER DATA HEREIN PROVIDED SHALL NOT BE COPIED, PUBLISHED OR OTHERWISE FURTHER DISSEMINATED WITHOUT PRIOR WRITTEN PERMISSION OF STANFORD UNIVERSITY/SLAC																						
REF-000203014		ENGR S. NEWBRY	DATE 20220228	APPROVALS																				
NEXT ASSEMBLIES:		DWN S. NEWBRY																						
		CHKR ---																						
<table border="1"> <tr> <th>DIMENSIONS</th> <th>< 6</th> <th>> 6</th> <th>> 30</th> <th>> 120</th> <th>> 315</th> <th>> 1000</th> <th>> 2000</th> </tr> <tr> <td>GENERAL TOLERANCES</td> <td>± 0.1</td> <td>± 0.2</td> <td>± 0.3</td> <td>± 0.5</td> <td>± 0.8</td> <td>± 1.2</td> <td>± 2</td> </tr> </table>		DIMENSIONS	< 6	> 6	> 30	> 120	> 315	> 1000	> 2000	GENERAL TOLERANCES	± 0.1	± 0.2	± 0.3	± 0.5	± 0.8	± 1.2	± 2	<table border="1"> <tr> <td>DRAWING NUMBER</td> <td>REVISION NUMBER</td> </tr> <tr> <td>REF-000205158</td> <td>A</td> </tr> </table>			DRAWING NUMBER	REVISION NUMBER	REF-000205158	A
DIMENSIONS	< 6	> 6	> 30	> 120	> 315	> 1000	> 2000																	
GENERAL TOLERANCES	± 0.1	± 0.2	± 0.3	± 0.5	± 0.8	± 1.2	± 2																	
DRAWING NUMBER	REVISION NUMBER																							
REF-000205158	A																							

REF-000205158	REV	DESCRIPTION	DWN	CHK	RAP	PVD	DATE
---------------	-----	-------------	-----	-----	-----	-----	------

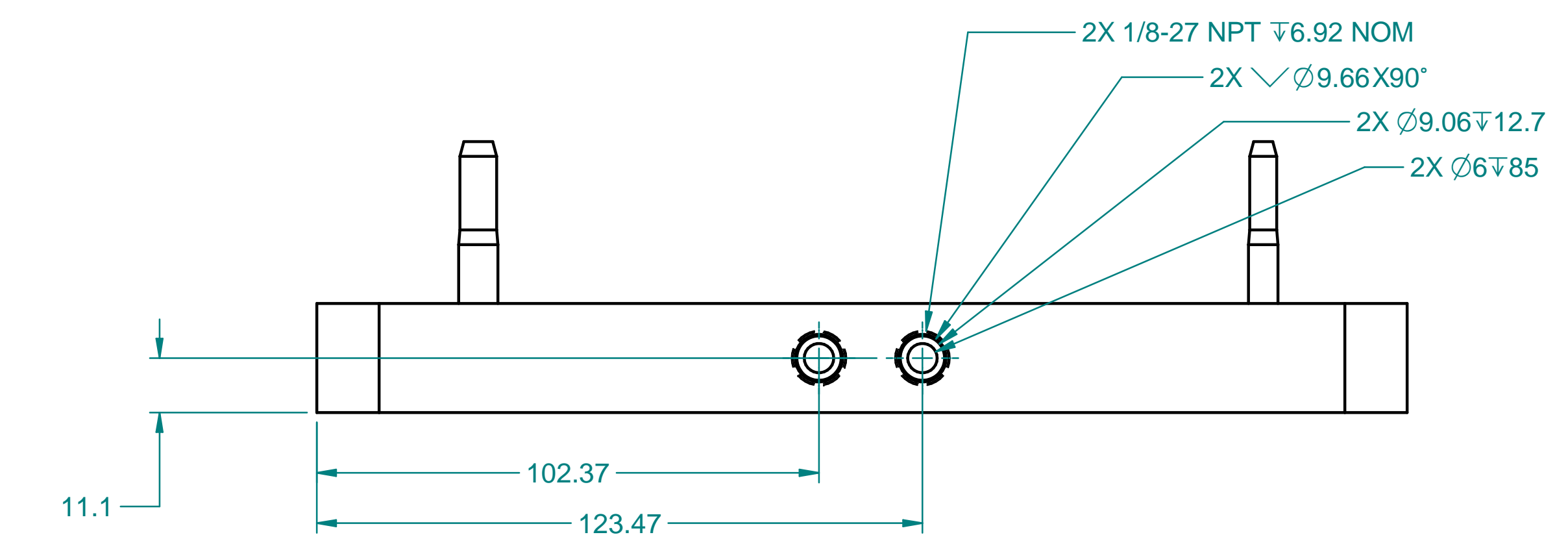
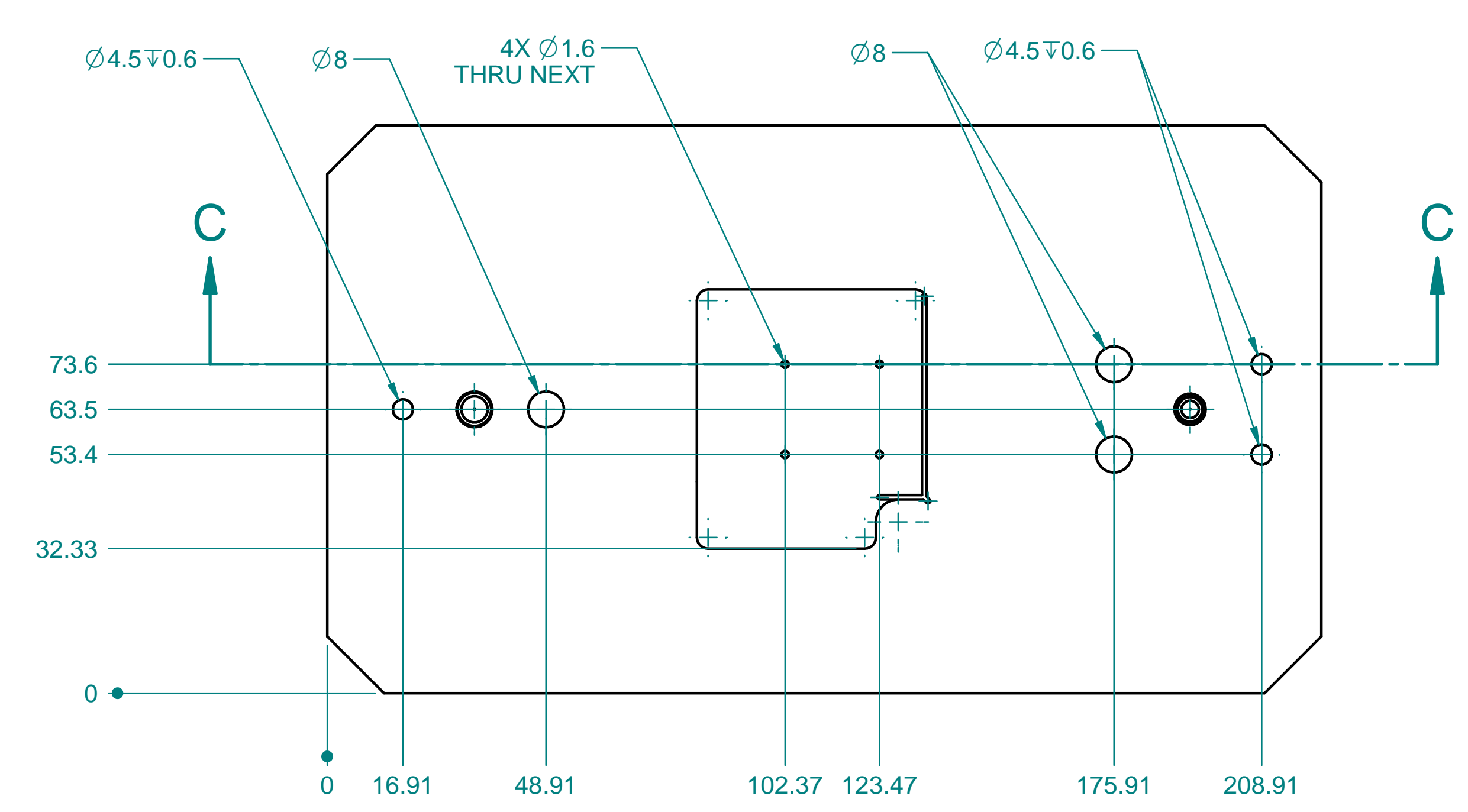


DIMENSIONING AND TOLERANCING IS IN ACCORDANCE WITH ASME Y14.5-2009		SCALE: 1:1 DO NOT SCALE DRAWING	ESTIMATED MASS: 4.74 kg	DWG TYPE: PART																		
UNLESS OTHERWISE SPECIFIED DIMENSIONS ARE IN MILLIMETERS				ATLAS INNER PIXEL MECH 19-1 OB STAVE LOADING PICK UP TABLE, RD53a QUAD																		
TOLERANCES: BREAK EDGES 0.13 - 0.4 INTERNAL CORNERS R 0.4 MAX ANGLE ± 1° ALL SURF 0.8																						
REF-000203014	<table border="1"> <tr> <td>DIMENSIONS</td> <td>< 6</td> <td>> 6</td> <td>> 30</td> <td>> 120</td> <td>> 315</td> <td>> 1000</td> <td>> 2000</td> </tr> <tr> <td>GENERAL TOLERANCES</td> <td>± 0.1</td> <td>± 0.2</td> <td>± 0.3</td> <td>± 0.5</td> <td>± 0.8</td> <td>± 1.2</td> <td>± 2</td> </tr> </table>	DIMENSIONS	< 6	> 6	> 30	> 120	> 315	> 1000	> 2000	GENERAL TOLERANCES	± 0.1	± 0.2	± 0.3	± 0.5	± 0.8	± 1.2	± 2	ENGR S. NEWBRY DWN S. NEWBRY CHKR ---	DATE 20220228 APPROVALS --- --- ---	DRAWING NUMBER REF-000205158	REVISION NUMBER A	D
DIMENSIONS	< 6	> 6	> 30	> 120	> 315	> 1000	> 2000															
GENERAL TOLERANCES	± 0.1	± 0.2	± 0.3	± 0.5	± 0.8	± 1.2	± 2															
NEXT ASSEMBLIES:		CAD FILE NAME: REF-000205158.dft		3 OF 3 2 OF 3 1 OF 3																		

D	A	REF-000205158	1		
REV	DESCRIPTION	DWN	CHKR	APVD	DATE



SECTION C-C



DIMENSIONING AND TOLERANCING IS IN ACCORDANCE WITH ASME Y14.5-2009		SCALE: 1:1 DO NOT SCALE DRAWING	ESTIMATED MASS: 4.74 kg	DWG TYPE: PART																
UNLESS OTHERWISE SPECIFIED DIMENSIONS ARE IN MILLIMETERS																				
TOLERANCES: BREAK EDGES 0.13 - 0.4 INTERNAL CORNERS R 0.4 MAX ANGLE ± 1° ALL SURF 0.8 		THE DRAWINGS, SPECIFICATIONS AND OTHER DATA HEREIN PROVIDED SHALL NOT BE COPIED, PUBLISHED OR OTHERWISE FURTHER DISSEMINATED WITHOUT PRIOR WRITTEN PERMISSION OF STANFORD UNIVERSITY/SLAC																		
REF-000203014	<table border="1"> <tr> <th>DIMENSIONS</th> <th>< 6</th> <th>> 6</th> <th>> 30</th> <th>> 120</th> <th>> 315</th> <th>> 1000</th> <th>> 2000</th> </tr> <tr> <td>GENERAL TOLERANCES</td> <td>± 0.1</td> <td>± 0.2</td> <td>± 0.3</td> <td>± 0.5</td> <td>± 0.8</td> <td>± 1.2</td> <td>± 2</td> </tr> </table>	DIMENSIONS	< 6	> 6	> 30	> 120	> 315	> 1000	> 2000	GENERAL TOLERANCES	± 0.1	± 0.2	± 0.3	± 0.5	± 0.8	± 1.2	± 2	ENGR S. NEWBRY DWN S. NEWBRY CHKR ---	DATE 20220228 APPROVALS --- --- ---	ATLAS INNER PIXEL MECH 19-1 OB STAVE LOADING PICK UP TABLE, RD53a QUAD --- DRAWING NUMBER REF-000205158 REVISION NUMBER A D
DIMENSIONS	< 6	> 6	> 30	> 120	> 315	> 1000	> 2000													
GENERAL TOLERANCES	± 0.1	± 0.2	± 0.3	± 0.5	± 0.8	± 1.2	± 2													
NEXT ASSEMBLIES:	CAD FILE NAME: REF-000205158.dft																			