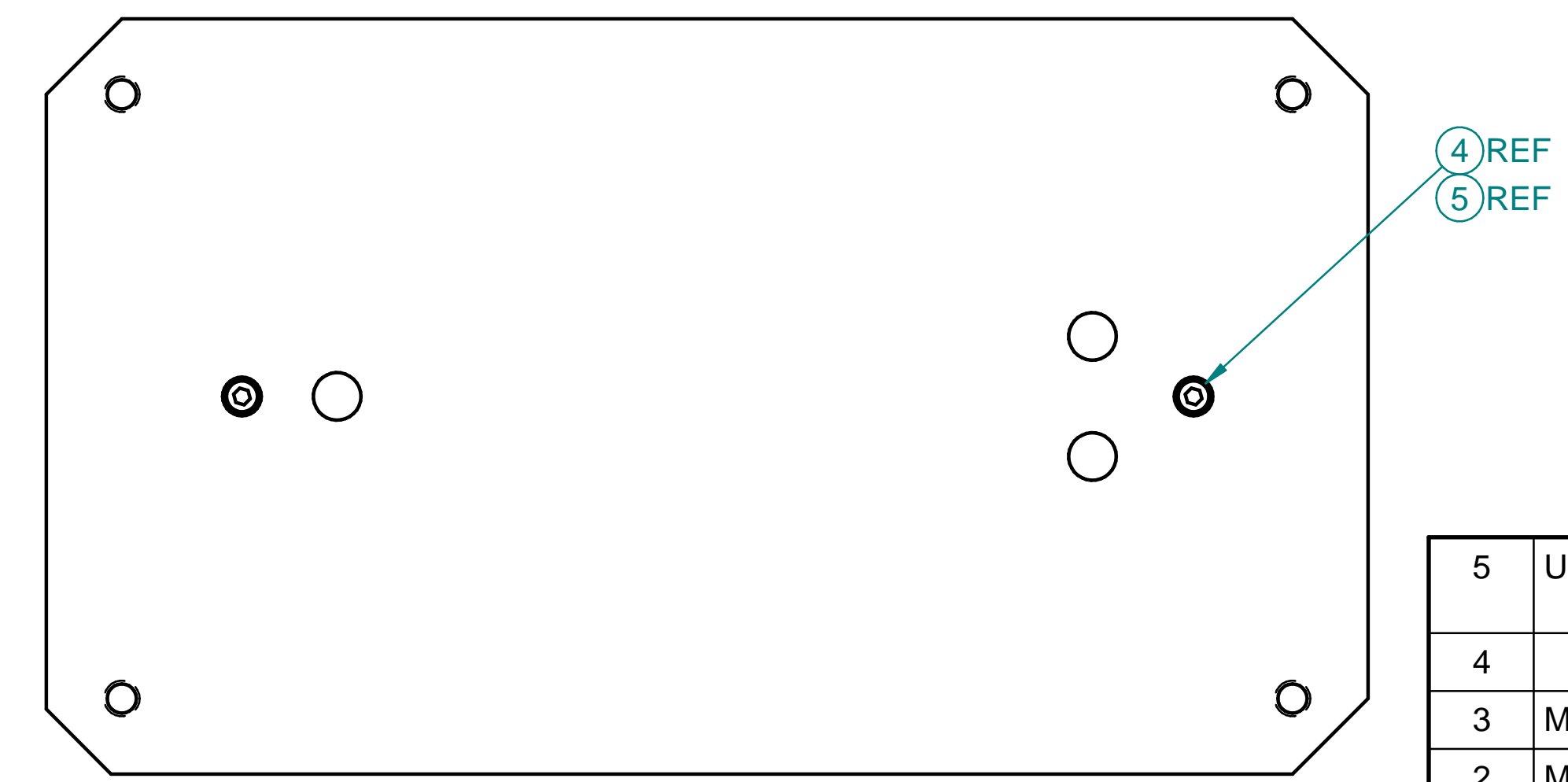
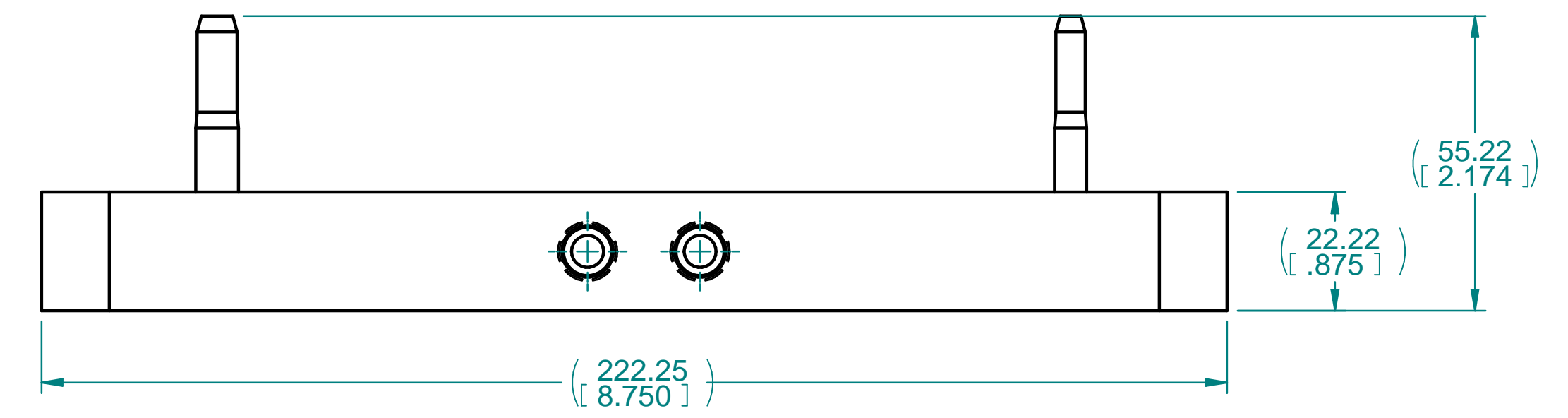
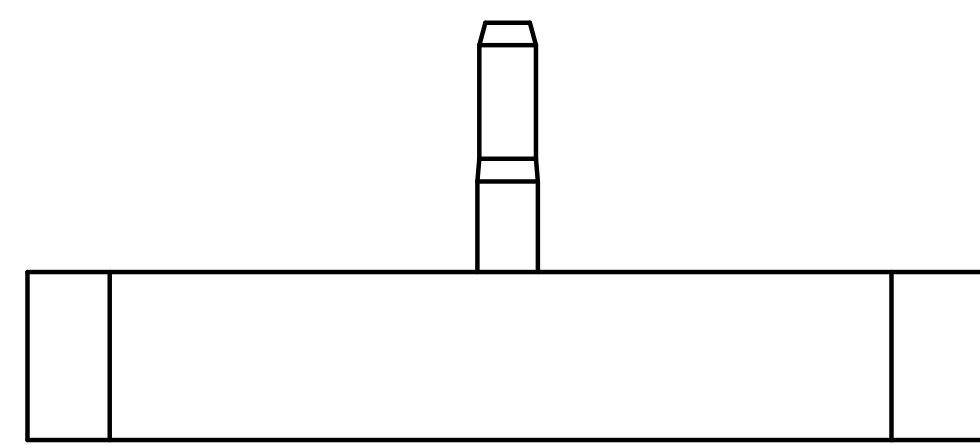
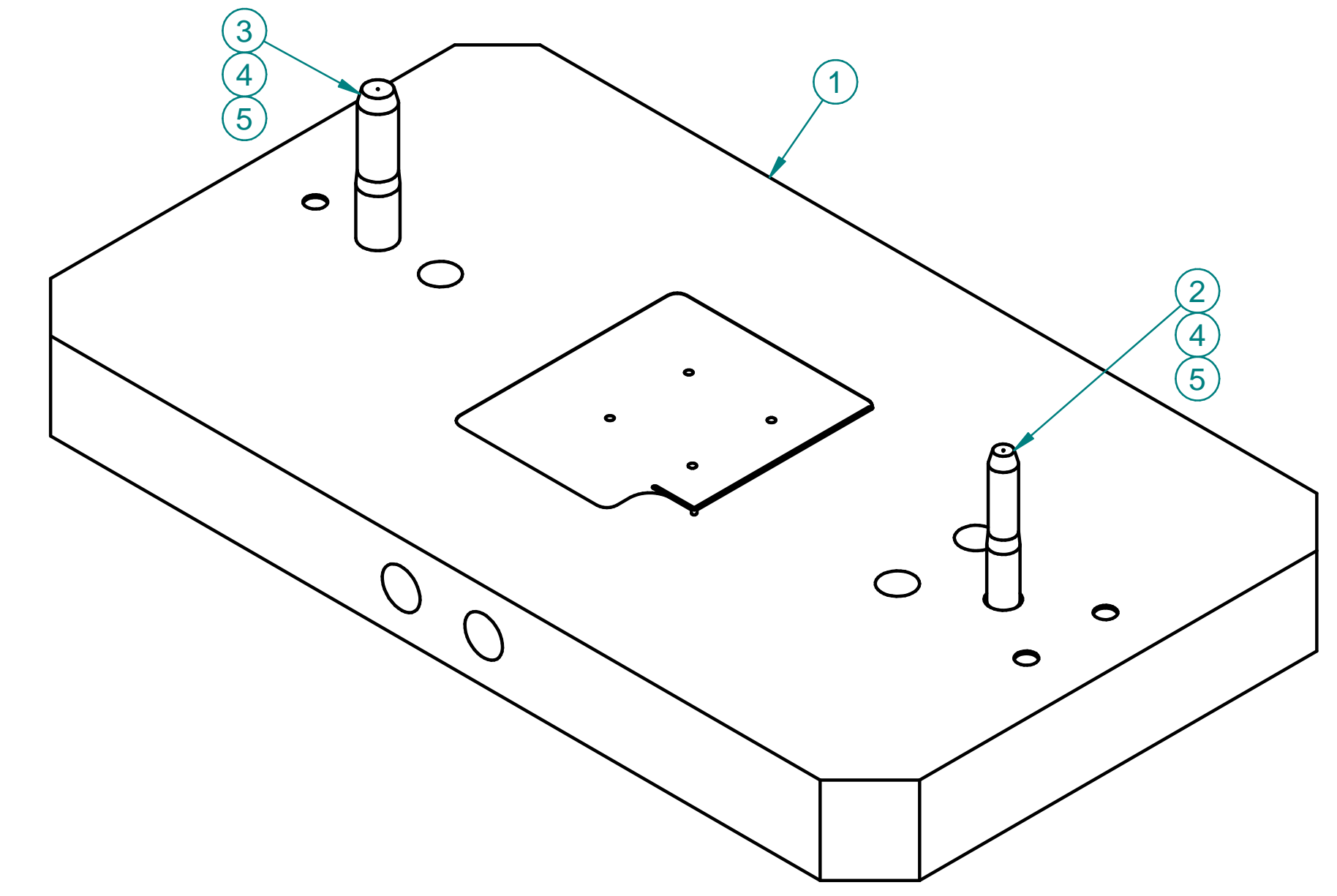
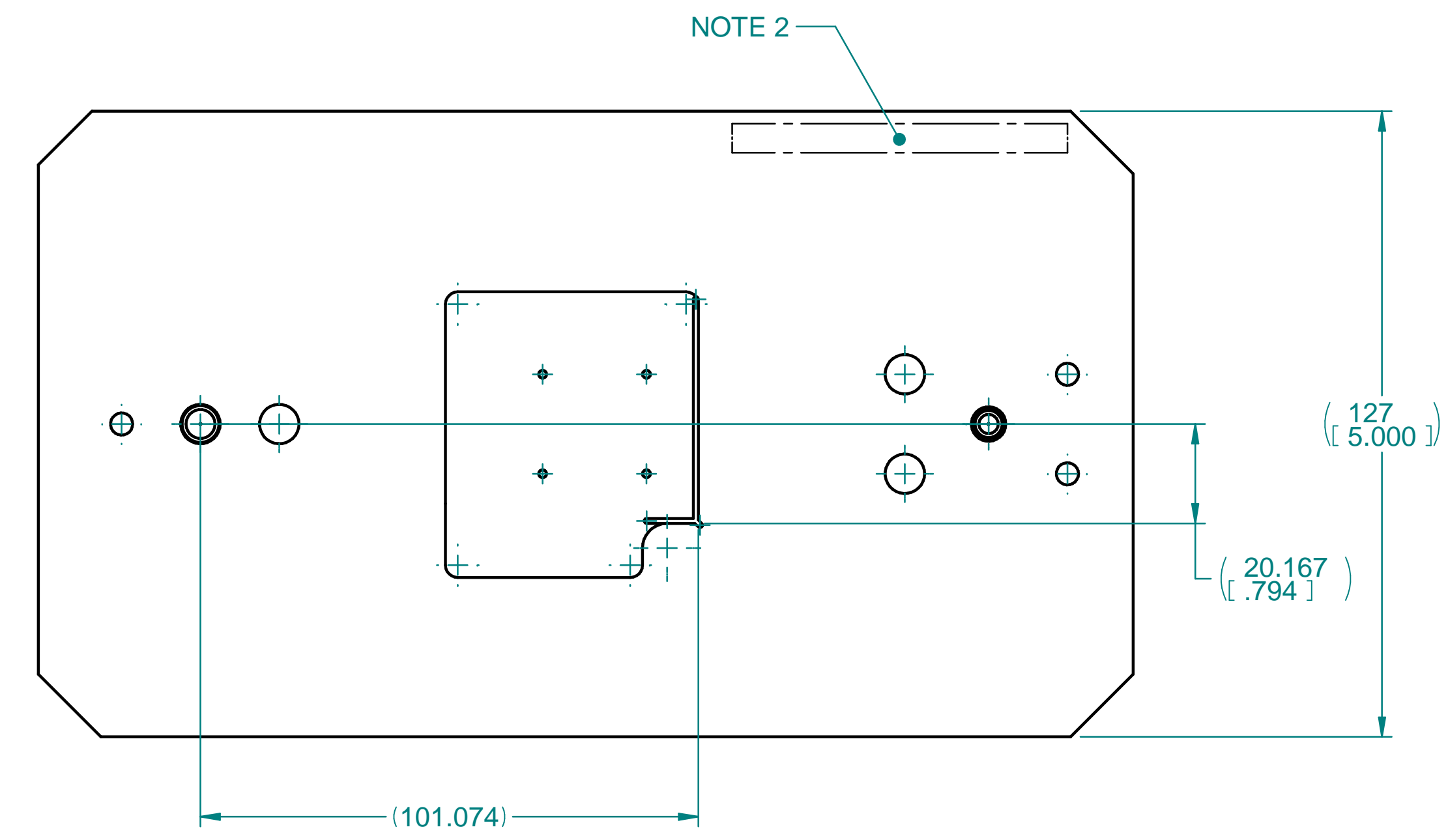


NOTES UNLESS OTHERWISE SPECIFIED:

1. MATERIAL: SEE TABLE. DO NOT SUBSTITUTE.
2. EMBOSS OR ENGRAVE PART AND REVISION NUMBER APPROX. WHERE SHOWN.
3. INSTALL PINS AS SHOWN. ALL DIMENSIONS APPLY AFTER PINS INSTALLED.
4. DEGREASE WITH ALCOHOL AND CUSHION TO PROTECT FROM HANDLING DAMAGE.

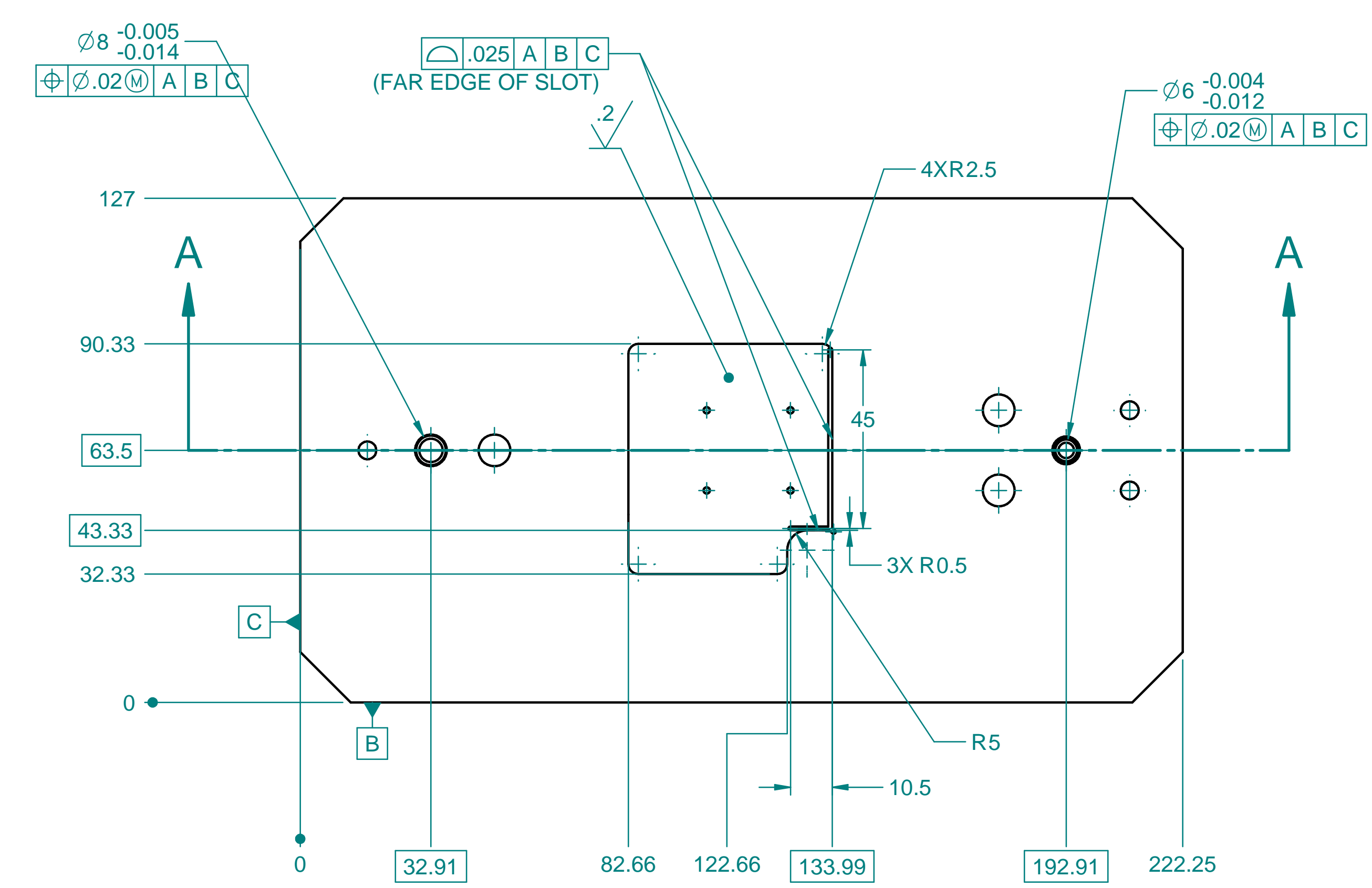
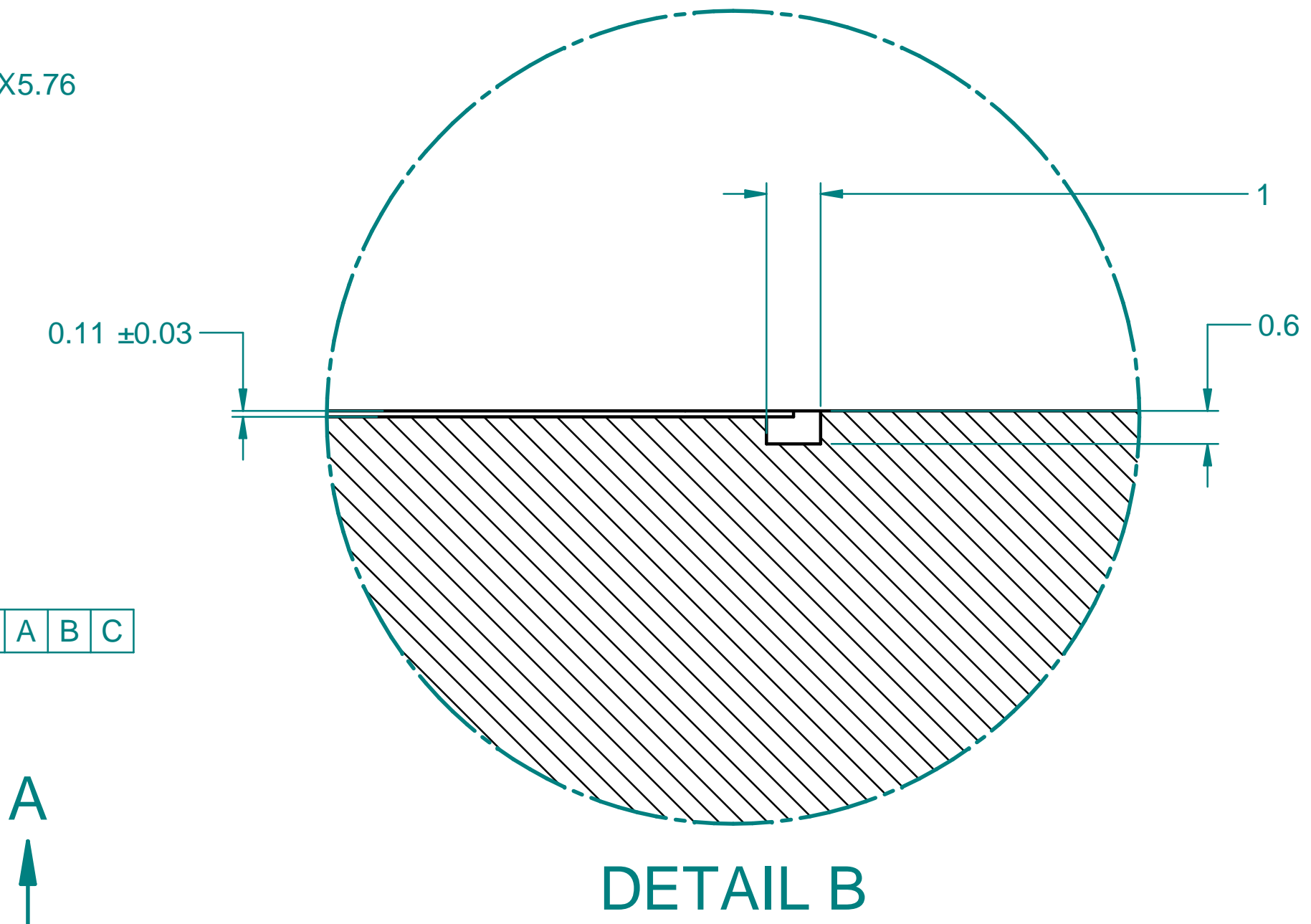
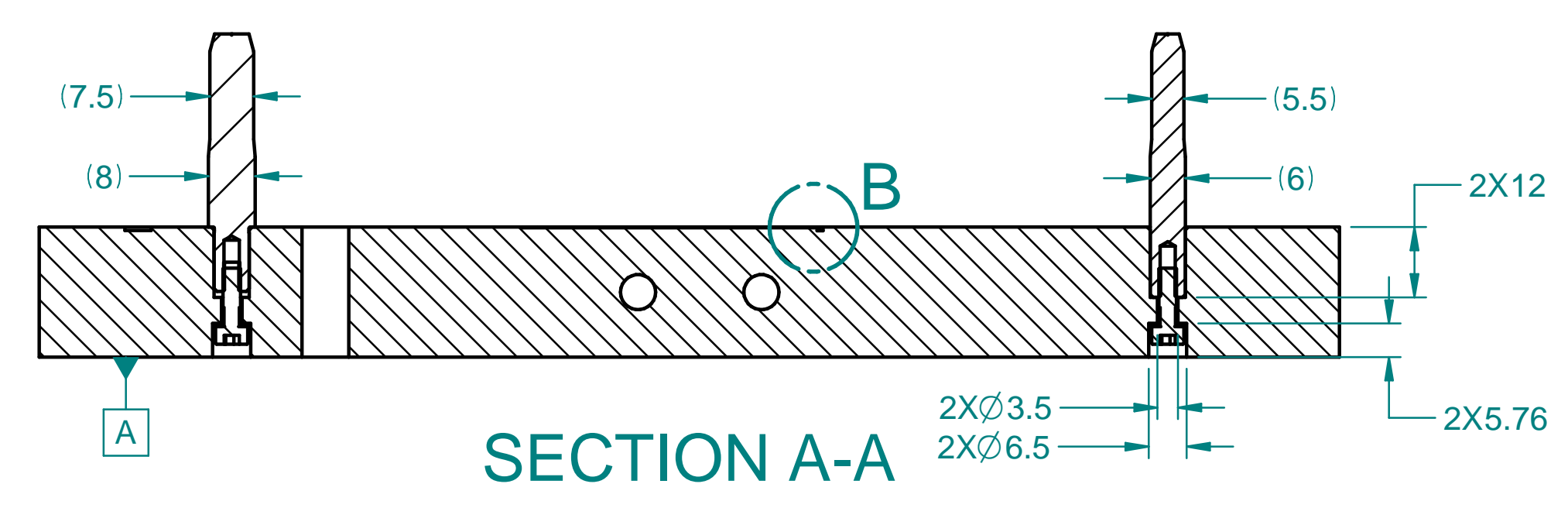
**CHECK-PRINT**  
newbry  
03-03-2022 03:02:13 PM



ITEM	NUMBER	DESCRIPTION	QTY
5	UC COMPONENTS MC -310-NW	SCREW, CAP, SKT HD, M3X0.5 X 10mm, SST 316, COATED WS2	2
4		WASHER, FLAT, NAR, M3, SST	2
3	MISUMI HWPG6-P8.00-Q7.50-L11-B12.0-E3.0-F15.0	DOWEL PIN, STEPPED, 8 OD, H7 TOL., SST	1
2	MISUMI SWPG6-P6.00-Q5.50-L12-B12.0-E3.0-F15.0	DOWEL PIN, STEPPED, 6 OD, H7 TOL., SST	1
1		304 SST	1

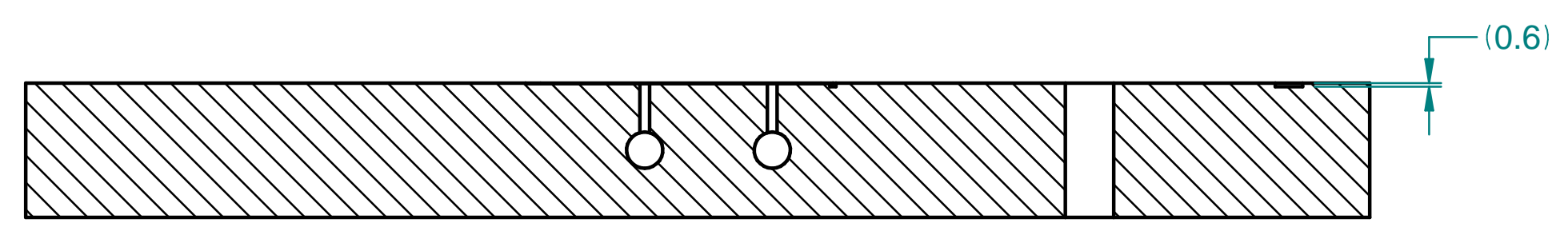
DIMENSIONING AND TOLERANCING IS IN ACCORDANCE WITH ASME Y14.5-2009		SCALE: 1:1 DO NOT SCALE DRAWING	ESTIMATED MASS: 4.74 kg	DWG TYPE: PART																		
UNLESS OTHERWISE SPECIFIED DIMENSIONS ARE IN MILLIMETERS		<b>ATLAS INNER PIXEL MECH 19-1 OB STAVE LOADING PICK UP TABLE, RD53a QUAD</b>																				
TOLERANCES: BREAK EDGES 0.13 - 0.4 INTERNAL CORNERS R 0.4 MAX ANGLE ± 1° ALL SURF 0.8																						
REF-000203014		THE DRAWINGS, SPECIFICATIONS AND OTHER DATA HEREIN PROVIDED SHALL NOT BE COPIED, PUBLISHED OR OTHERWISE FURTHER DISSEMINATED WITHOUT PRIOR WRITTEN PERMISSION OF STANFORD UNIVERSITY/SLAC																				
NEXT ASSEMBLIES:	<table border="1"> <tr> <th>DIMENSIONS</th> <th>&lt; 6</th> <th>&gt; 6</th> <th>&gt; 30</th> <th>&gt; 120</th> <th>&gt; 315</th> <th>&gt; 1000</th> <th>&gt; 2000</th> </tr> <tr> <td>GENERAL TOLERANCES</td> <td>± 0.1</td> <td>± 0.2</td> <td>± 0.3</td> <td>± 0.5</td> <td>± 0.8</td> <td>± 1.2</td> <td>± 2</td> </tr> </table>	DIMENSIONS	< 6	> 6	> 30	> 120	> 315	> 1000	> 2000	GENERAL TOLERANCES	± 0.1	± 0.2	± 0.3	± 0.5	± 0.8	± 1.2	± 2	ENGR S. NEWBRY DWN S. NEWBRY CHKR ---	DATE 20220228 APPROVALS --- --- ---	DRAWING NUMBER <b>REF-000205158</b>	REVISION NUMBER <b>A</b>	<b>D</b>
DIMENSIONS	< 6	> 6	> 30	> 120	> 315	> 1000	> 2000															
GENERAL TOLERANCES	± 0.1	± 0.2	± 0.3	± 0.5	± 0.8	± 1.2	± 2															

REF-000205158	REV	DESCRIPTION	DWN	CHK	RAP	PVD	DATE
---------------	-----	-------------	-----	-----	-----	-----	------

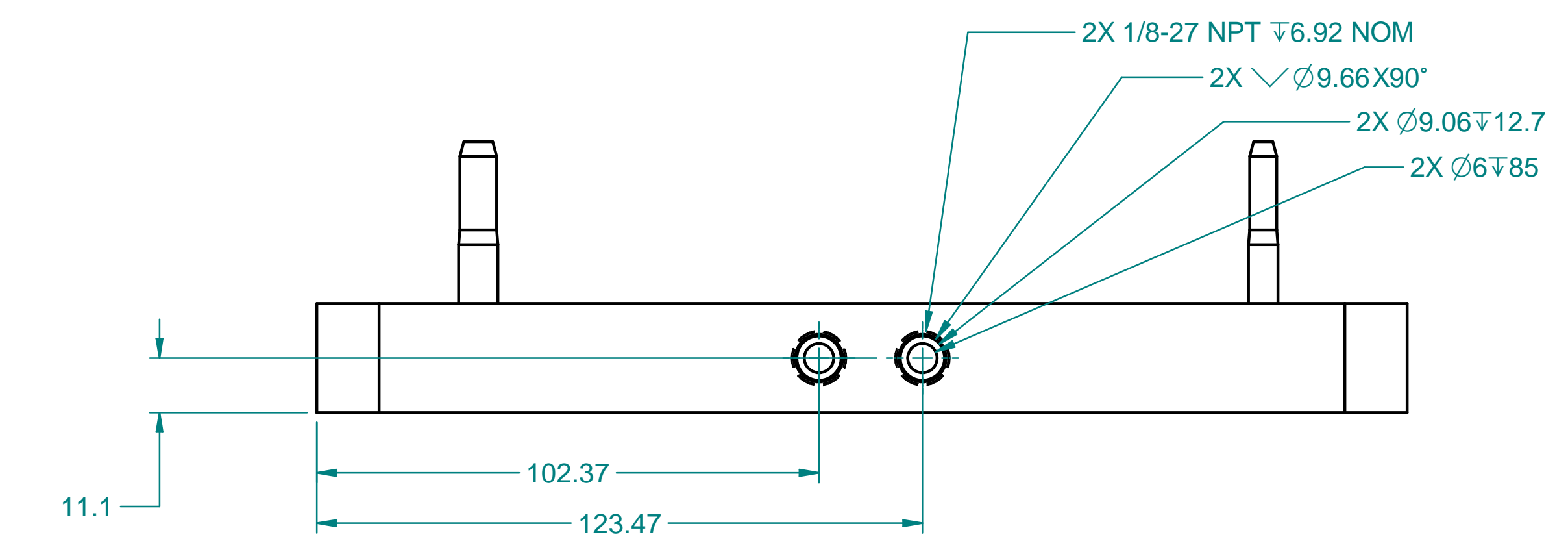
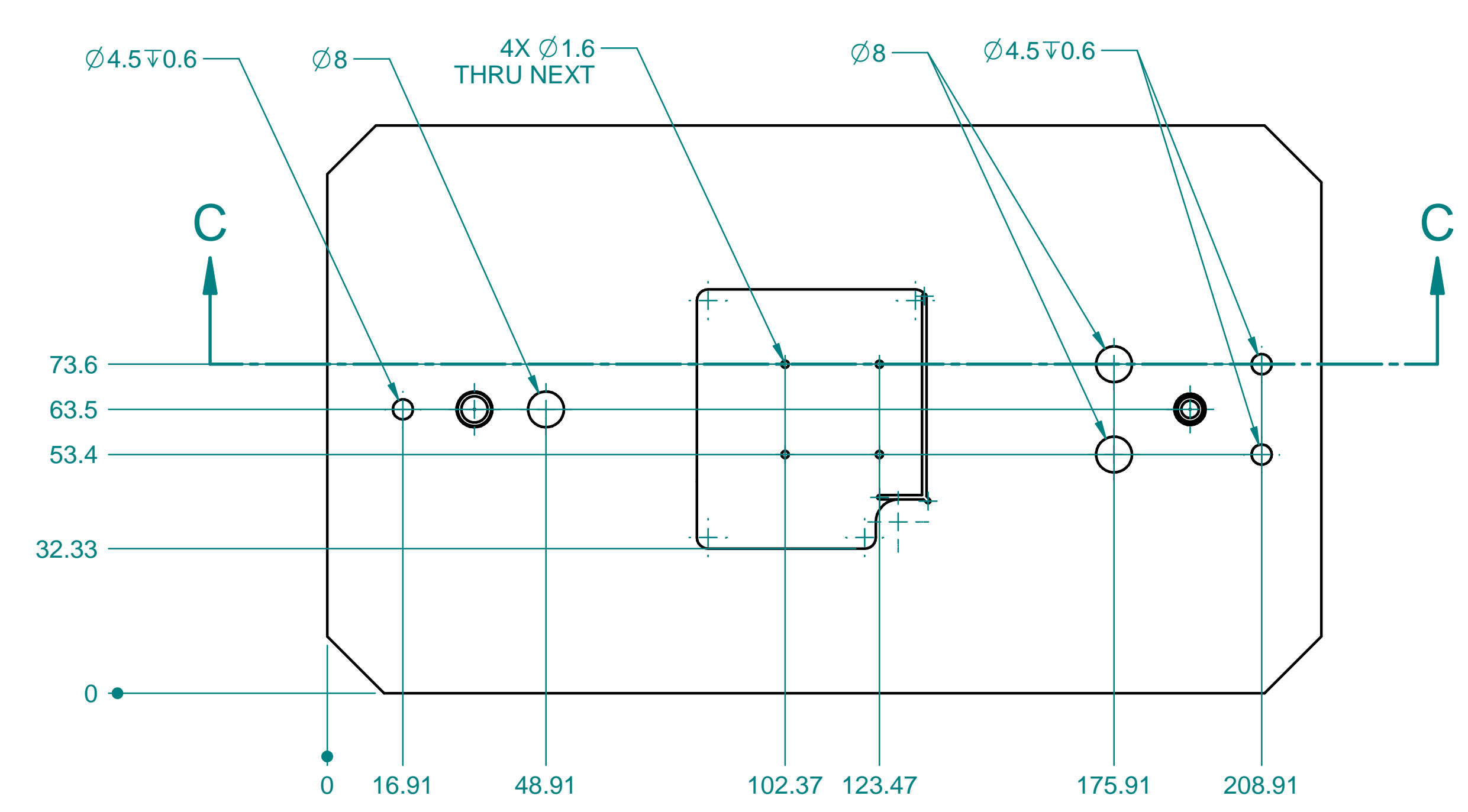


DIMENSIONING AND TOLERANCING IS IN ACCORDANCE WITH ASME Y14.5-2009		SCALE: 1:1 DO NOT SCALE DRAWING	ESTIMATED MASS: 4.74 kg	DWG TYPE: PART																
UNLESS OTHERWISE SPECIFIED DIMENSIONS ARE IN MILLIMETERS				<b>ATLAS INNER PIXEL MECH 19-1 OB STAVE LOADING PICK UP TABLE, RD53a QUAD</b>																
TOLERANCES: BREAK EDGES 0.13 - 0.4 INTERNAL CORNERS R 0.4 MAX ANGLE ± 1° ALL SURF 0.8																				
REF-000203014		ENGR S. NEWBRY DWN S. NEWBRY CHKR ---		DATE 20220228 APPROVALS --- --- ---																
NEXT ASSEMBLIES:	<table border="1"> <tr> <td>DIMENSIONS</td> <td>&lt; 6</td> <td>&gt; 6</td> <td>&gt; 30</td> <td>&gt; 120</td> <td>&gt; 315</td> <td>&gt; 1000</td> <td>&gt; 2000</td> </tr> <tr> <td>GENERAL TOLERANCES</td> <td>± 0.1</td> <td>± 0.2</td> <td>± 0.3</td> <td>± 0.5</td> <td>± 0.8</td> <td>± 1.2</td> <td>± 2</td> </tr> </table>	DIMENSIONS	< 6	> 6	> 30	> 120	> 315	> 1000	> 2000	GENERAL TOLERANCES	± 0.1	± 0.2	± 0.3	± 0.5	± 0.8	± 1.2	± 2	DRAWING NUMBER <b>REF-000205158</b>		REVISION NUMBER <b>A D</b>
DIMENSIONS	< 6	> 6	> 30	> 120	> 315	> 1000	> 2000													
GENERAL TOLERANCES	± 0.1	± 0.2	± 0.3	± 0.5	± 0.8	± 1.2	± 2													

D	A	REF-000205158	1		
REV	DESCRIPTION	DWN	CHKR	APVD	DATE



SECTION C-C



DIMENSIONING AND TOLERANCING IS IN ACCORDANCE WITH ASME Y14.5-2009		SCALE: 1:1 <small>DO NOT SCALE DRAWING</small>	ESTIMATED MASS: 4.74 kg	DWG TYPE: PART																
UNLESS OTHERWISE SPECIFIED DIMENSIONS ARE IN MILLIMETERS TOLERANCES: BREAK EDGES 0.13 - 0.4 INTERNAL CORNERS R 0.4 MAX ANGLE ± 1° ALL SURF 0.8																				
REF-000203014		THE DRAWINGS, SPECIFICATIONS AND OTHER DATA HEREIN PROVIDED SHALL NOT BE COPIED, PUBLISHED OR OTHERWISE FURTHER DISSEMINATED WITHOUT PRIOR WRITTEN PERMISSION OF STANFORD UNIVERSITY/SLAC																		
NEXT ASSEMBLIES:		ENGR S. NEWBRY DWN S. NEWBRY CHKR ---	DATE 20220228	APPROVALS --- --- ---																
<table border="1"> <tr> <th>DIMENSIONS</th> <th>&lt; 6</th> <th>&gt; 6</th> <th>&gt; 30</th> <th>&gt; 120</th> <th>&gt; 315</th> <th>&gt; 1000</th> <th>&gt; 2000</th> </tr> <tr> <td>GENERAL TOLERANCES</td> <td>± 0.1</td> <td>± 0.2</td> <td>± 0.3</td> <td>± 0.5</td> <td>± 0.8</td> <td>± 1.2</td> <td>± 2</td> </tr> </table>		DIMENSIONS	< 6	> 6	> 30	> 120	> 315	> 1000	> 2000	GENERAL TOLERANCES	± 0.1	± 0.2	± 0.3	± 0.5	± 0.8	± 1.2	± 2	ATLAS INNER PIXEL MECH 19-1 OB STAVE LOADING PICK UP TABLE, RD53a QUAD		
DIMENSIONS	< 6	> 6	> 30	> 120	> 315	> 1000	> 2000													
GENERAL TOLERANCES	± 0.1	± 0.2	± 0.3	± 0.5	± 0.8	± 1.2	± 2													
		DRAWING NUMBER <b>REF-000205158</b>		REVISION NUMBER <b>A</b>																
				<b>D</b>																