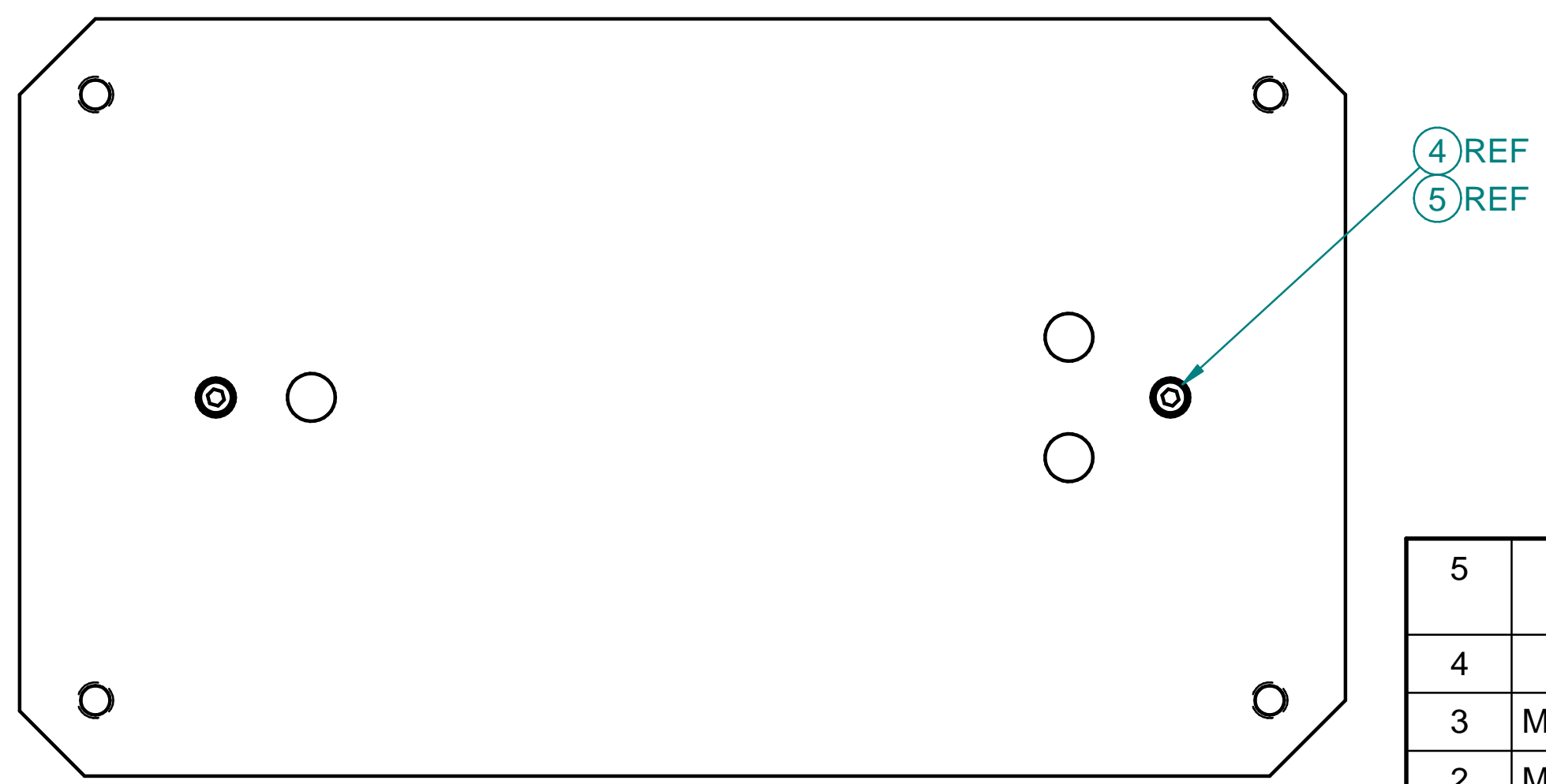
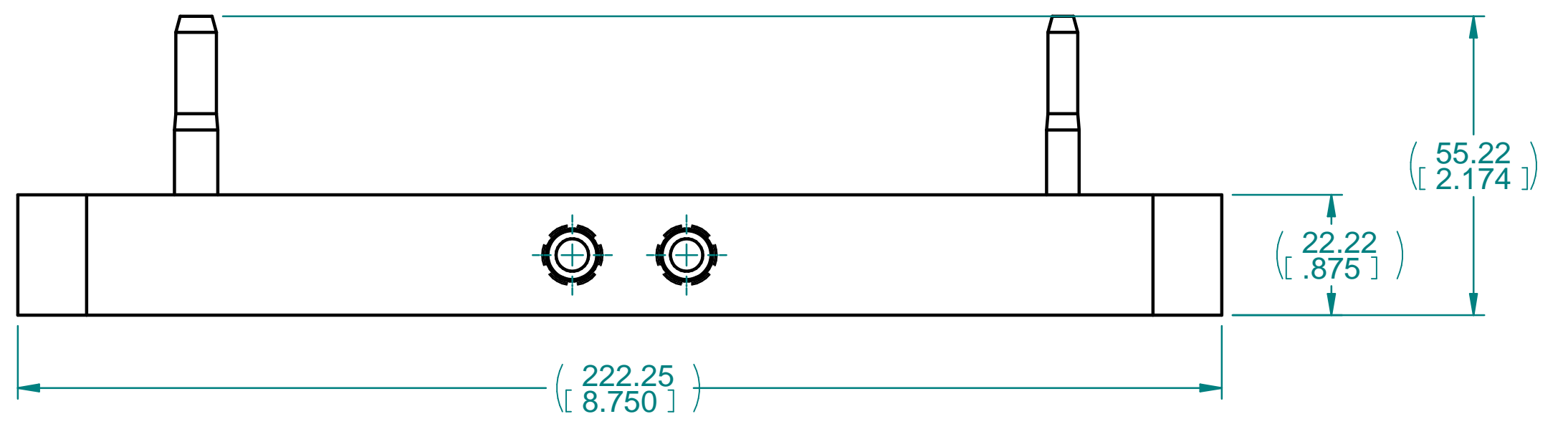
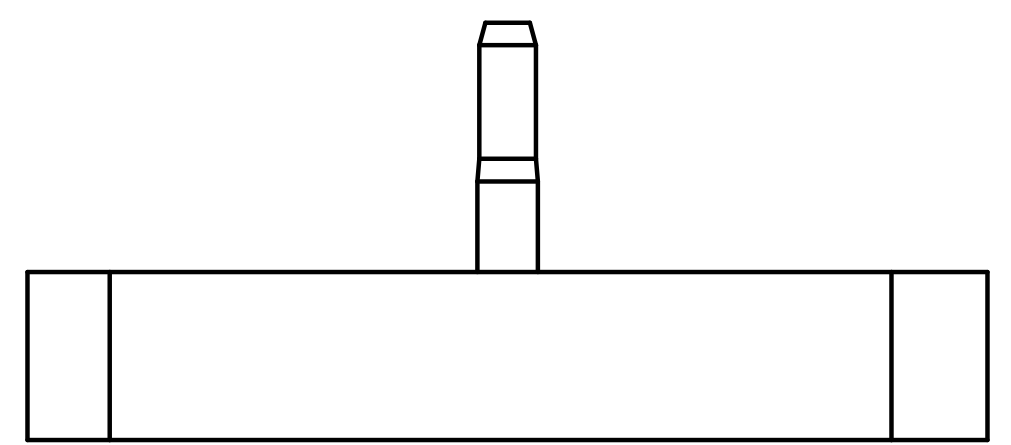
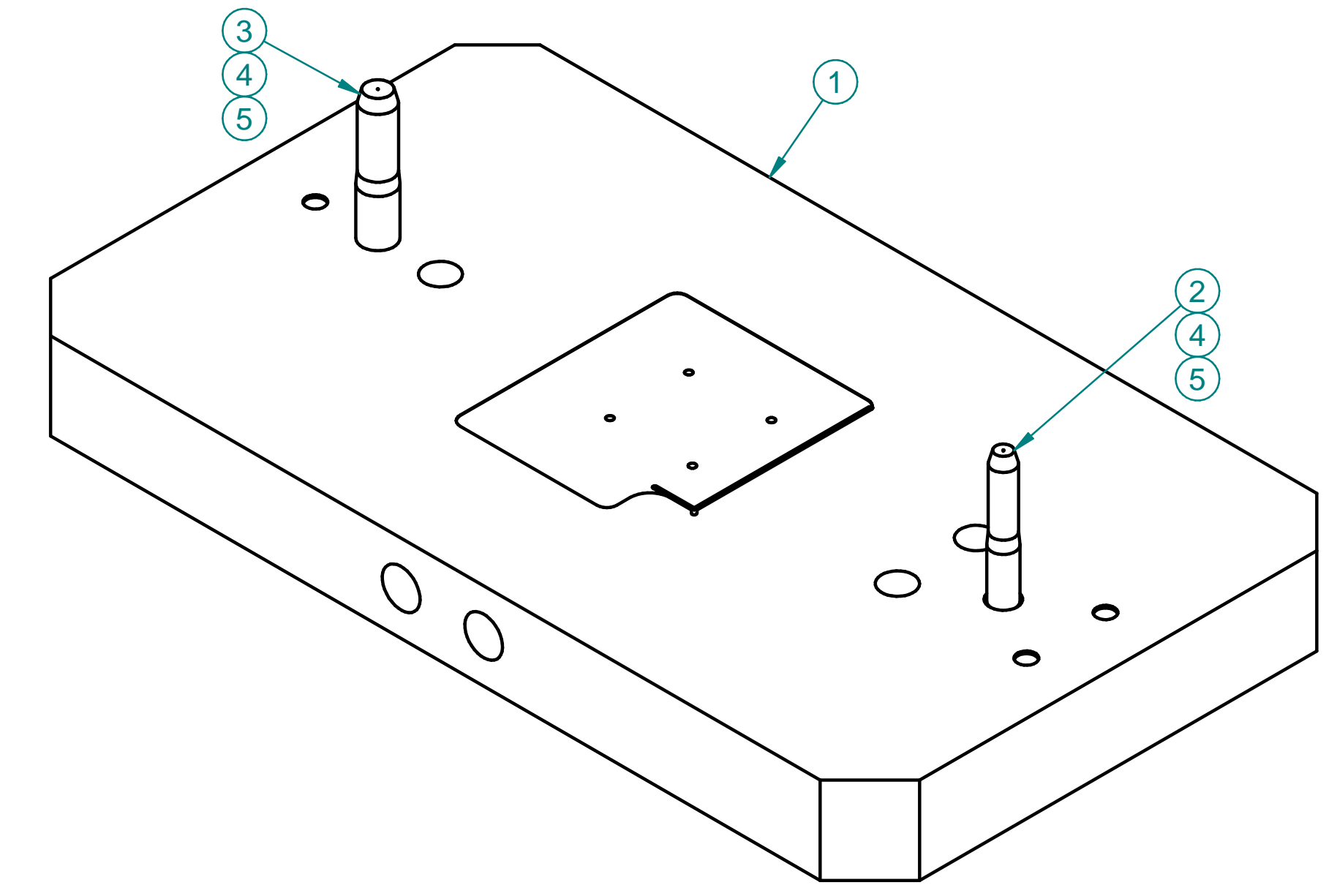
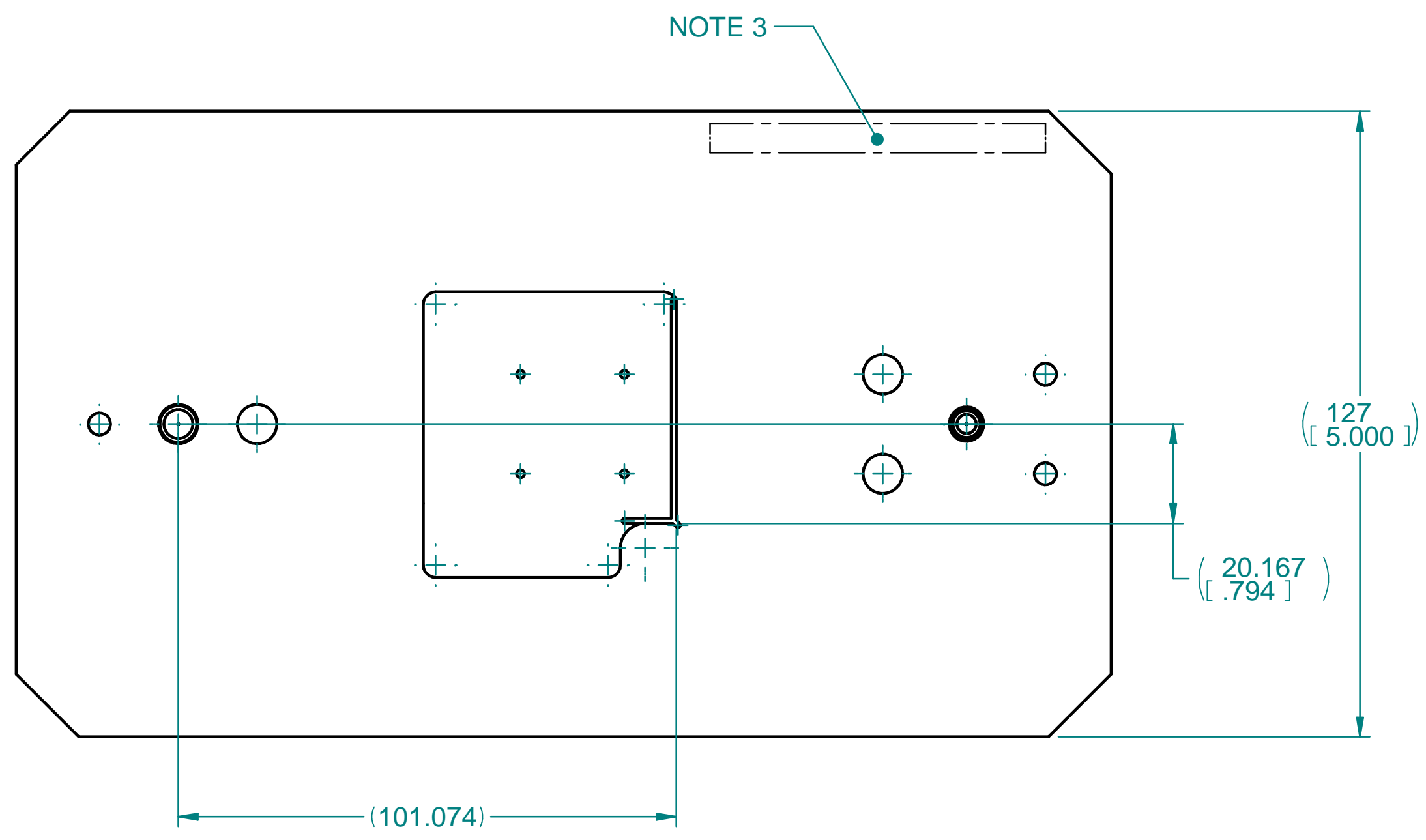


NOTES UNLESS OTHERWISE SPECIFIED:

1. MATERIAL: SEE TABLE. DO NOT SUBSTITUTE.
2. EMBOSS OR ENGRAVE PART AND REVISION NUMBER APPROX. WHERE SHOWN.
3. INSTALL PINS AS SHOWN. ALL DIMENSIONS APPLY AFTER PINS INSTALLED.
4. DEGREASE WITH ALCOHOL AND CUSHION TO PROTECT FROM HANDLING DAMAGE.

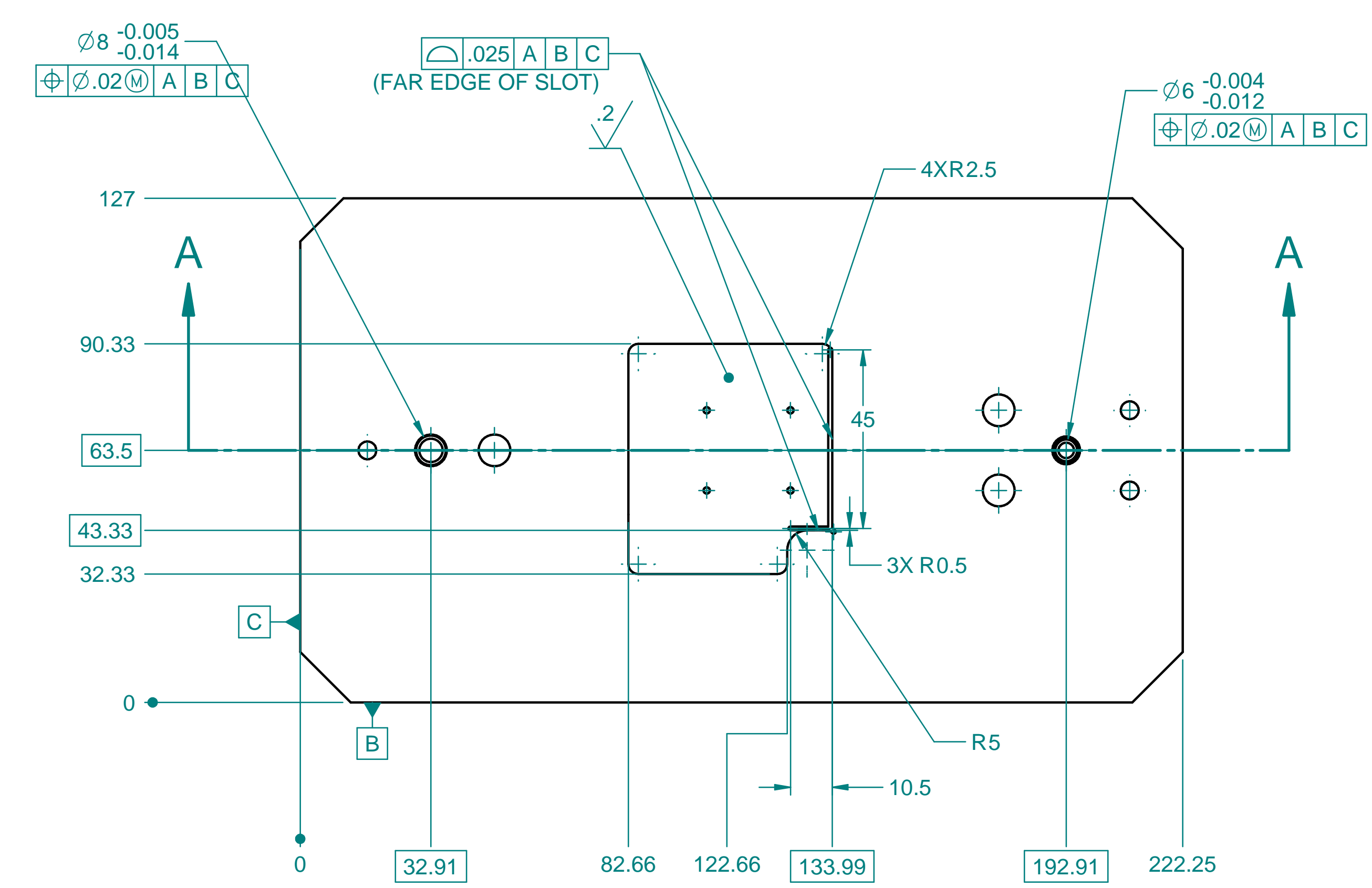
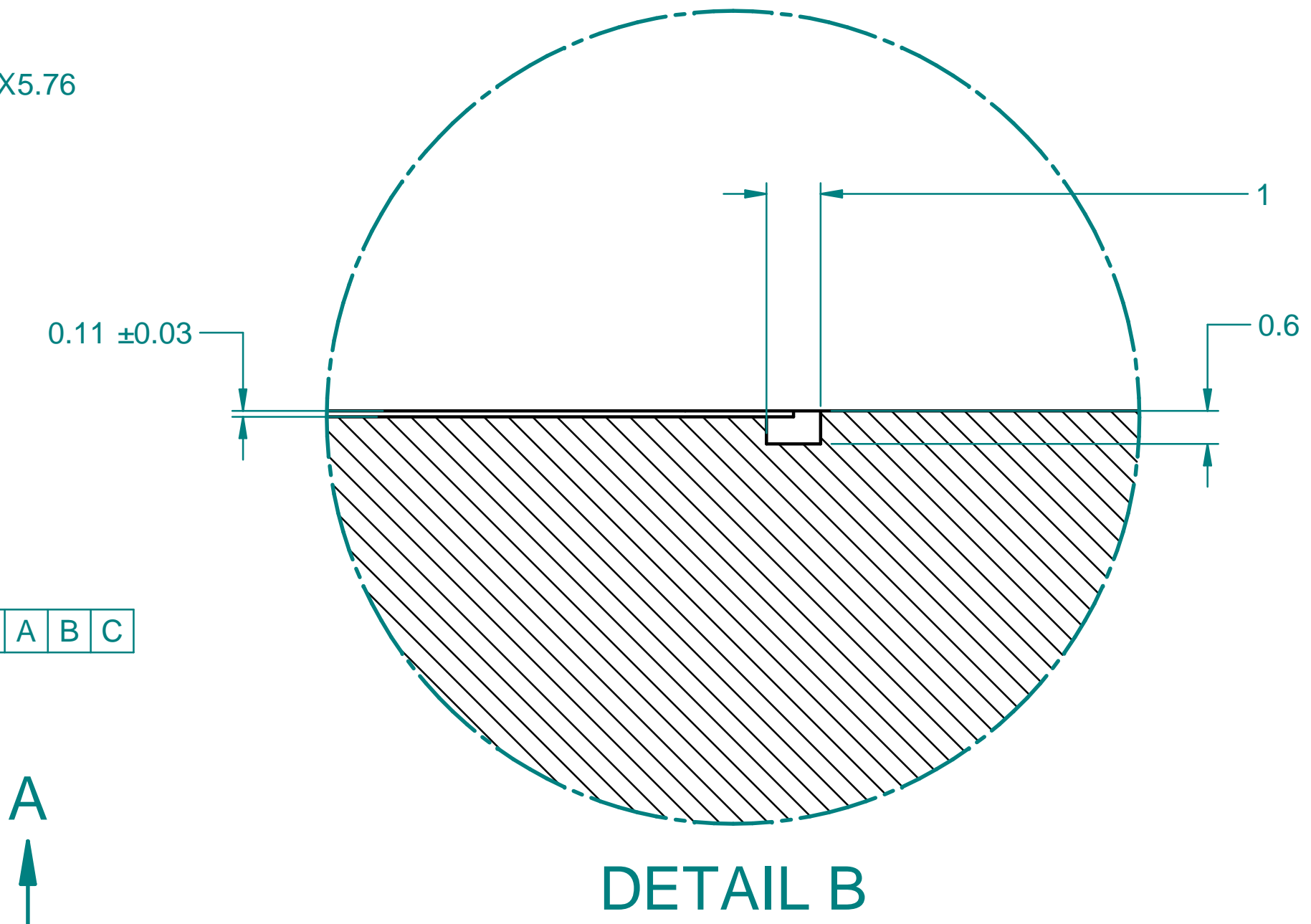
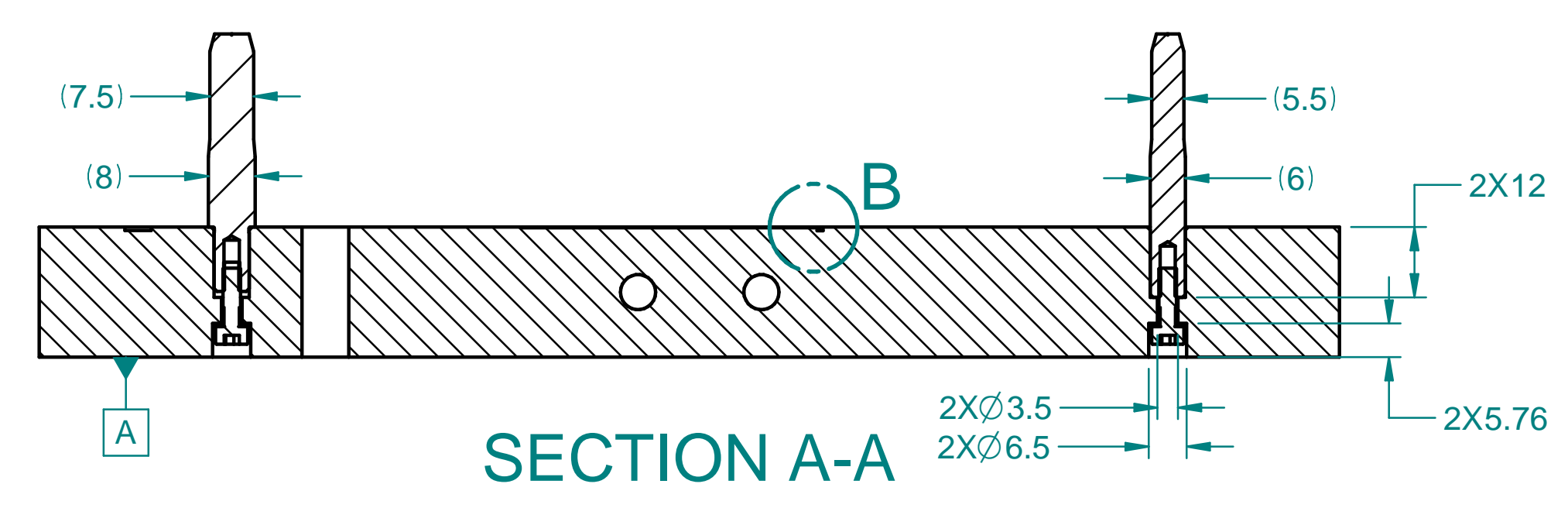
CHECK-PRINT
newbry
03-03-2022 02:19:04 PM



ITEM	NUMBER	DESCRIPTION	QTY
5		SCREW, CAP, SKT HD, M3X0.5 X 10mm, SST 316, COATED WS2	2
4		WASHER, FLAT, NAR, M3, SST	2
3	MISUMI HWPG6-P8.00-Q7.50-L11-B12.0-E3.0-F15.0	DOWEL PIN, STEPPED, 8 OD, H7 TOL., SST	1
2	MISUMI SWPG6-P6.00-Q5.50-L12-B12.0-E3.0-F15.0	DOWEL PIN, STEPPED, 6 OD, H7 TOL., SST	1
1		304 SST	1

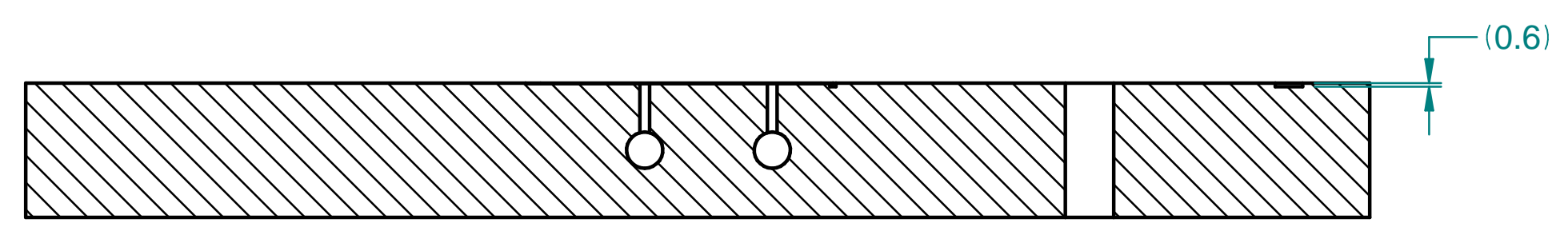
DIMENSIONING AND TOLERANCING IS IN ACCORDANCE WITH ASME Y14.5-2009		SCALE: 1:1 DO NOT SCALE DRAWING	ESTIMATED MASS: 4.74 kg	DWG TYPE: PART																	
UNLESS OTHERWISE SPECIFIED DIMENSIONS ARE IN MILLIMETERS			ATLAS INNER PIXEL MECH 19-1 OB STAVE LOADING PICK UP TABLE, RD53a QUAD																		
TOLERANCES: BREAK EDGES 0.13 - 0.4 INTERNAL CORNERS R 0.4 MAX ANGLE ± 1° ALL SURF 0.8																					
REF-000203014		ENGR S. NEWBRY DWN S. NEWBRY CHKR ---	DATE 20220228	APPROVALS --- --- ---																	
NEXT ASSEMBLIES:	<table border="1"> <tr> <th>DIMENSIONS</th> <th>< 6</th> <th>> 6</th> <th>> 30</th> <th>> 120</th> <th>> 315</th> <th>> 1000</th> <th>> 2000</th> </tr> <tr> <td>GENERAL TOLERANCES</td> <td>± 0.1</td> <td>± 0.2</td> <td>± 0.3</td> <td>± 0.5</td> <td>± 0.8</td> <td>± 1.2</td> <td>± 2</td> </tr> </table>	DIMENSIONS	< 6	> 6	> 30	> 120	> 315	> 1000	> 2000	GENERAL TOLERANCES	± 0.1	± 0.2	± 0.3	± 0.5	± 0.8	± 1.2	± 2	THE DRAWINGS, SPECIFICATIONS AND OTHER DATA HEREIN PROVIDED SHALL NOT BE COPIED, PUBLISHED OR OTHERWISE FURTHER DISSEMINATED WITHOUT PRIOR WRITTEN PERMISSION OF STANFORD UNIVERSITY/SLAC		DRAWING NUMBER REF-000205158	REVISION NUMBER A D
DIMENSIONS	< 6	> 6	> 30	> 120	> 315	> 1000	> 2000														
GENERAL TOLERANCES	± 0.1	± 0.2	± 0.3	± 0.5	± 0.8	± 1.2	± 2														

REF-000205158	REV	DESCRIPTION	DWN	CHK	RAP	PVD	DATE
---------------	-----	-------------	-----	-----	-----	-----	------

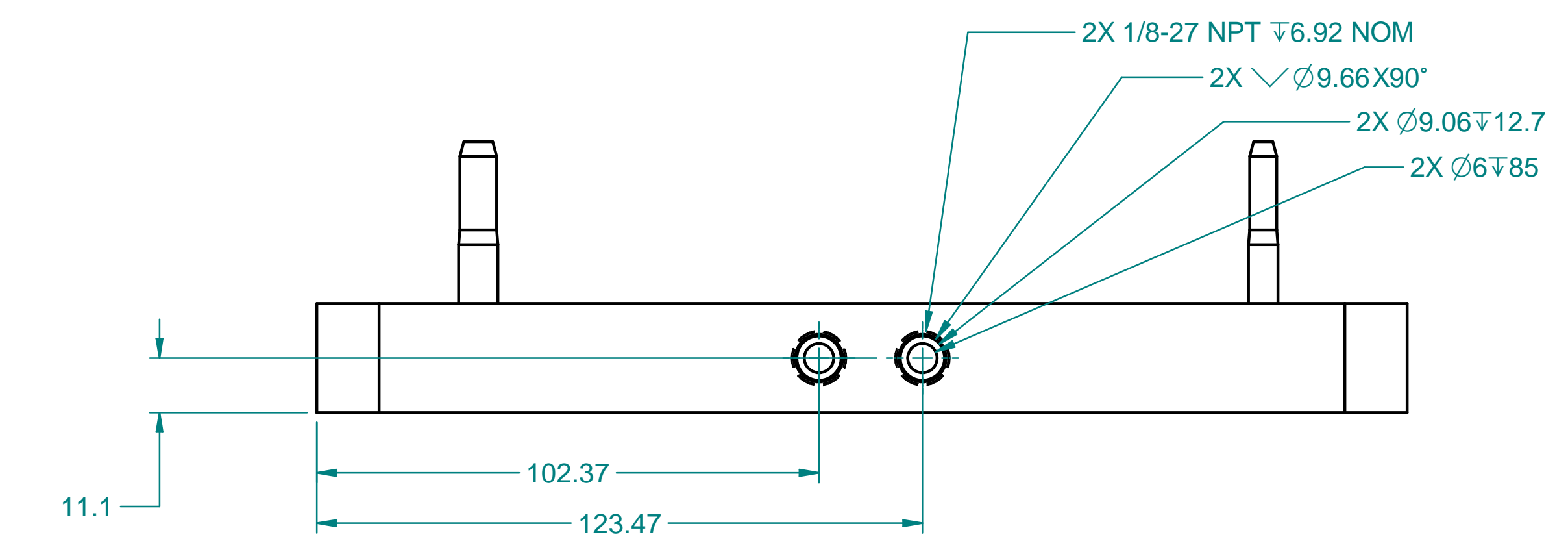
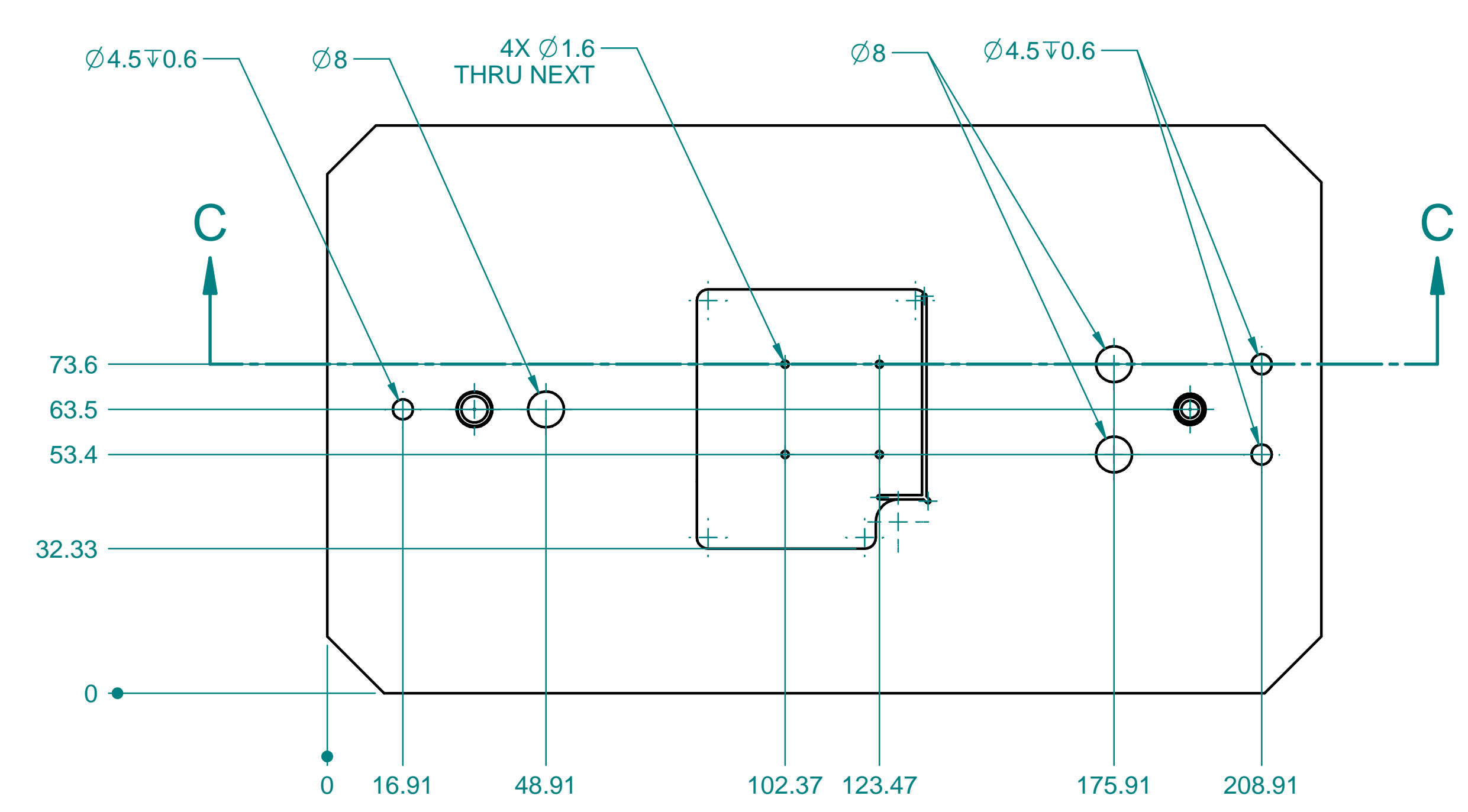


DIMENSIONING AND TOLERANCING IS IN ACCORDANCE WITH ASME Y14.5-2009		SCALE: 1:1 DO NOT SCALE DRAWING	ESTIMATED MASS: 4.74 kg	DWG TYPE: PART																		
UNLESS OTHERWISE SPECIFIED DIMENSIONS ARE IN MILLIMETERS				ATLAS INNER PIXEL MECH 19-1 OB STAVE LOADING PICK UP TABLE, RD53a QUAD																		
TOLERANCES: BREAK EDGES 0.13 - 0.4 INTERNAL CORNERS R 0.4 MAX ANGLE ± 1° ALL SURF 0.8																						
REF-000203014		THE DRAWINGS, SPECIFICATIONS AND OTHER DATA HEREIN PROVIDED SHALL NOT BE COPIED, PUBLISHED OR OTHERWISE FURTHER DISSEMINATED WITHOUT PRIOR WRITTEN PERMISSION OF STANFORD UNIVERSITY/SLAC		---																		
NEXT ASSEMBLIES:	<table border="1"> <tr> <td>DIMENSIONS</td> <td>< 6</td> <td>> 6</td> <td>> 30</td> <td>> 120</td> <td>> 315</td> <td>> 1000</td> <td>> 2000</td> </tr> <tr> <td>GENERAL TOLERANCES</td> <td>± 0.1</td> <td>± 0.2</td> <td>± 0.3</td> <td>± 0.5</td> <td>± 0.8</td> <td>± 1.2</td> <td>± 2</td> </tr> </table>	DIMENSIONS	< 6	> 6	> 30	> 120	> 315	> 1000	> 2000	GENERAL TOLERANCES	± 0.1	± 0.2	± 0.3	± 0.5	± 0.8	± 1.2	± 2	ENGR S. NEWBRY DWN S. NEWBRY CHKR ---	DATE 20220228 APPROVALS --- --- ---	DRAWING NUMBER REF-000205158	REVISION NUMBER A	D
DIMENSIONS	< 6	> 6	> 30	> 120	> 315	> 1000	> 2000															
GENERAL TOLERANCES	± 0.1	± 0.2	± 0.3	± 0.5	± 0.8	± 1.2	± 2															

REF-000205158	DESCRIPTION	DWN	CHK	APP	DATE
REV					



SECTION C-C



DIMENSIONING AND TOLERANCING IS IN ACCORDANCE WITH ASME Y14.5-2009		SCALE: 1:1 DO NOT SCALE DRAWING	ESTIMATED MASS: 4.74 kg	DWG TYPE: PART																
UNLESS OTHERWISE SPECIFIED DIMENSIONS ARE IN MILLIMETERS			ATLAS INNER PIXEL MECH 19-1 OB STAVE LOADING PICK UP TABLE, RD53a QUAD																	
TOLERANCES: BREAK EDGES 0.13 - 0.4 INTERNAL CORNERS R 0.4 MAX ANGLE ± 1° ALL SURF 0.8			THE DRAWINGS, SPECIFICATIONS AND OTHER DATA HEREIN PROVIDED SHALL NOT BE COPIED, PUBLISHED OR OTHERWISE FURTHER DISSEMINATED WITHOUT PRIOR WRITTEN PERMISSION OF STANFORD UNIVERSITY/SLAC																	
REF-000203014	DATE: 20220228	ENGR: S. NEWBRY	APPROVALS:	---																
NEXT ASSEMBLIES:	DWN: S. NEWBRY	CHKR: ---	DATE: 20220228	REVISION NUMBER: A																
<table border="1"> <tr> <th>DIMENSIONS</th> <th>< 6</th> <th>> 6</th> <th>> 30</th> <th>> 120</th> <th>> 315</th> <th>> 1000</th> <th>> 2000</th> </tr> <tr> <td>GENERAL TOLERANCES</td> <td>± 0.1</td> <td>± 0.2</td> <td>± 0.3</td> <td>± 0.5</td> <td>± 0.8</td> <td>± 1.2</td> <td>± 2</td> </tr> </table>		DIMENSIONS	< 6	> 6	> 30	> 120	> 315	> 1000	> 2000	GENERAL TOLERANCES	± 0.1	± 0.2	± 0.3	± 0.5	± 0.8	± 1.2	± 2	DRAWING NUMBER: REF-000205158		REVISION NUMBER: A
DIMENSIONS	< 6	> 6	> 30	> 120	> 315	> 1000	> 2000													
GENERAL TOLERANCES	± 0.1	± 0.2	± 0.3	± 0.5	± 0.8	± 1.2	± 2													
CAD FILE NAME: REF-000205158.dft																				