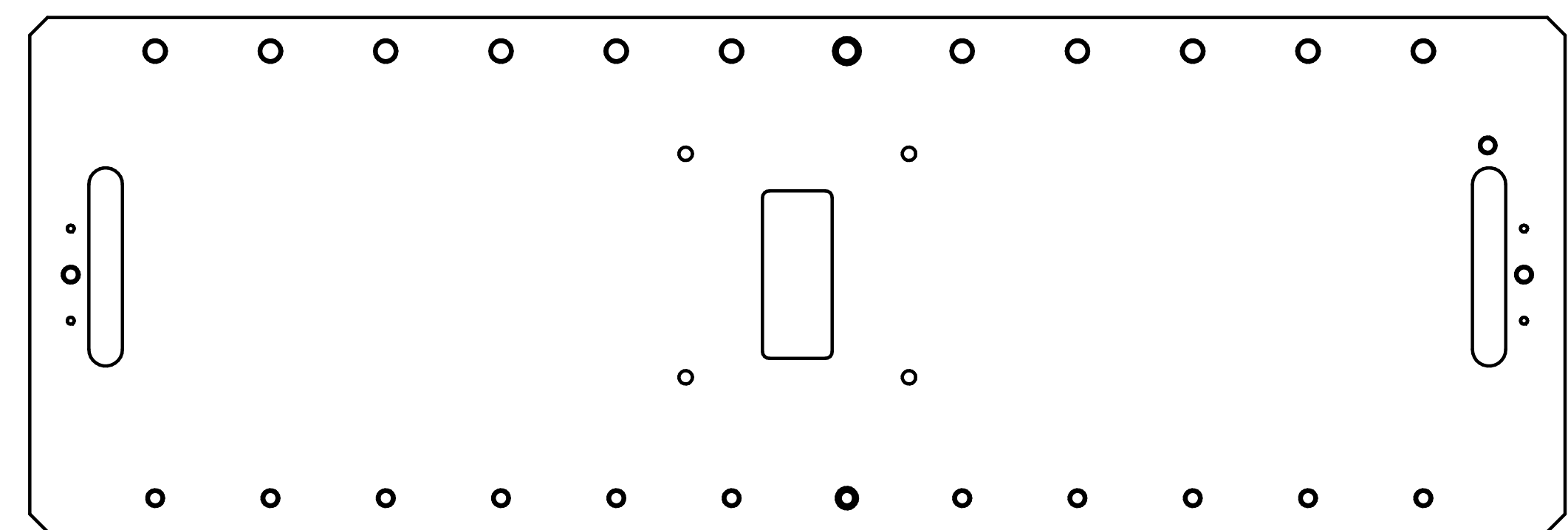
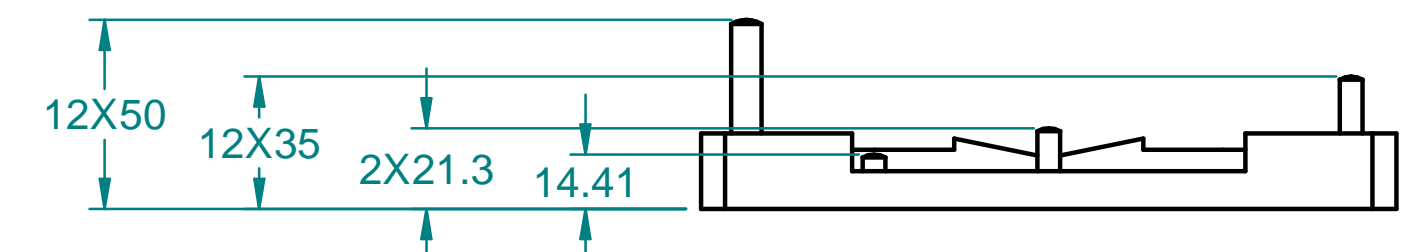
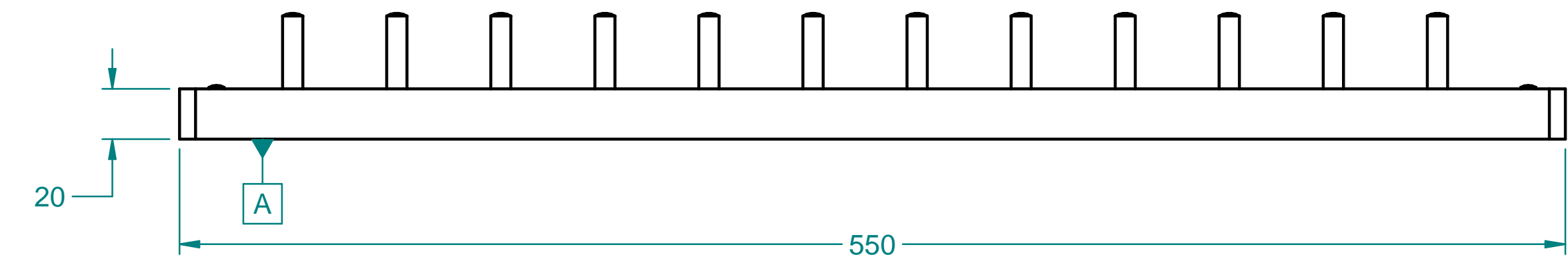
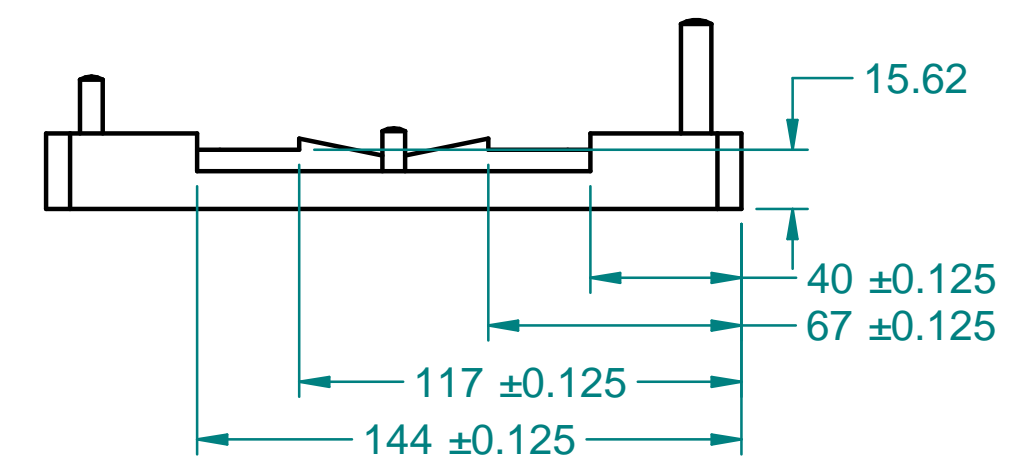
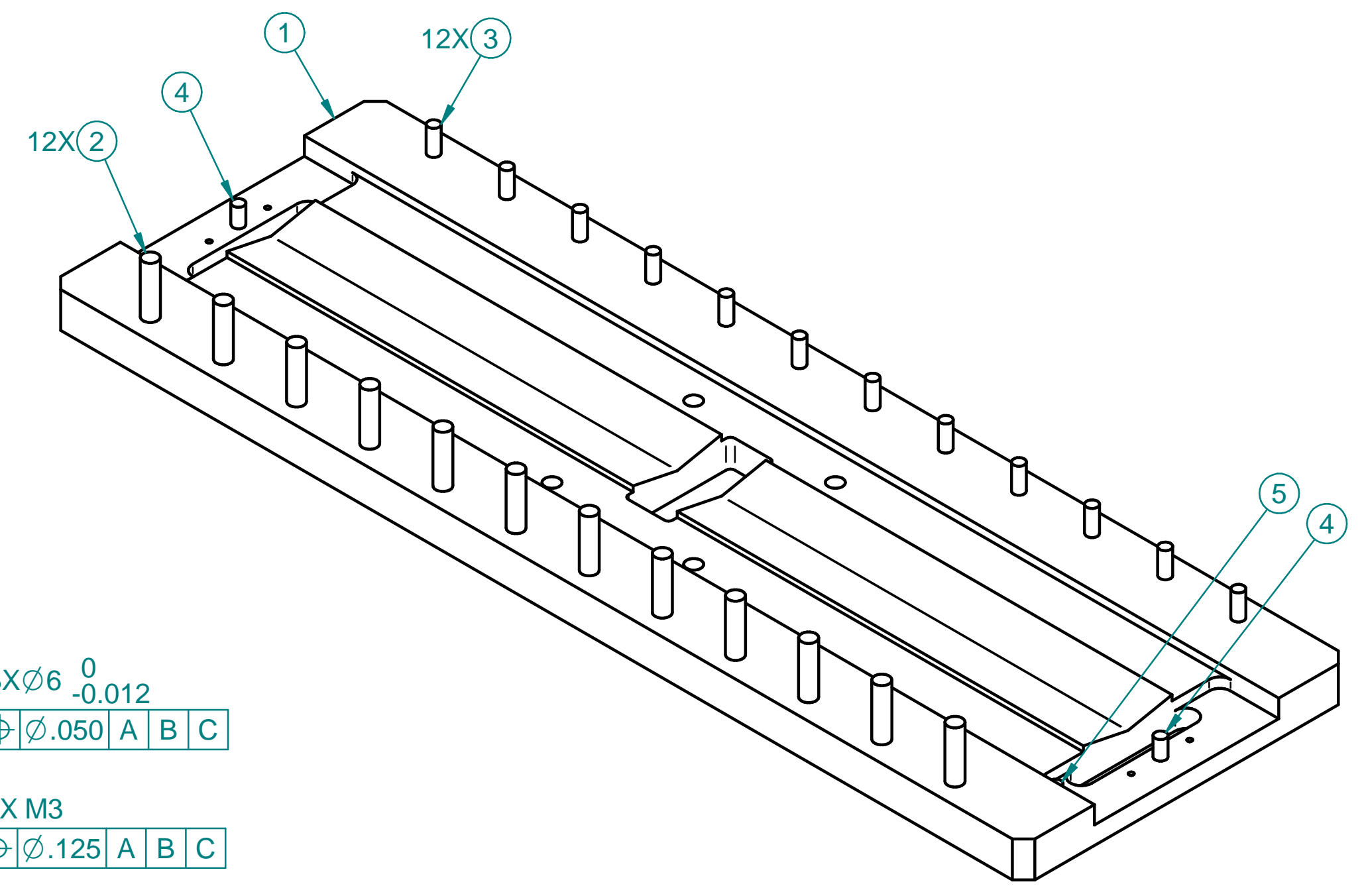
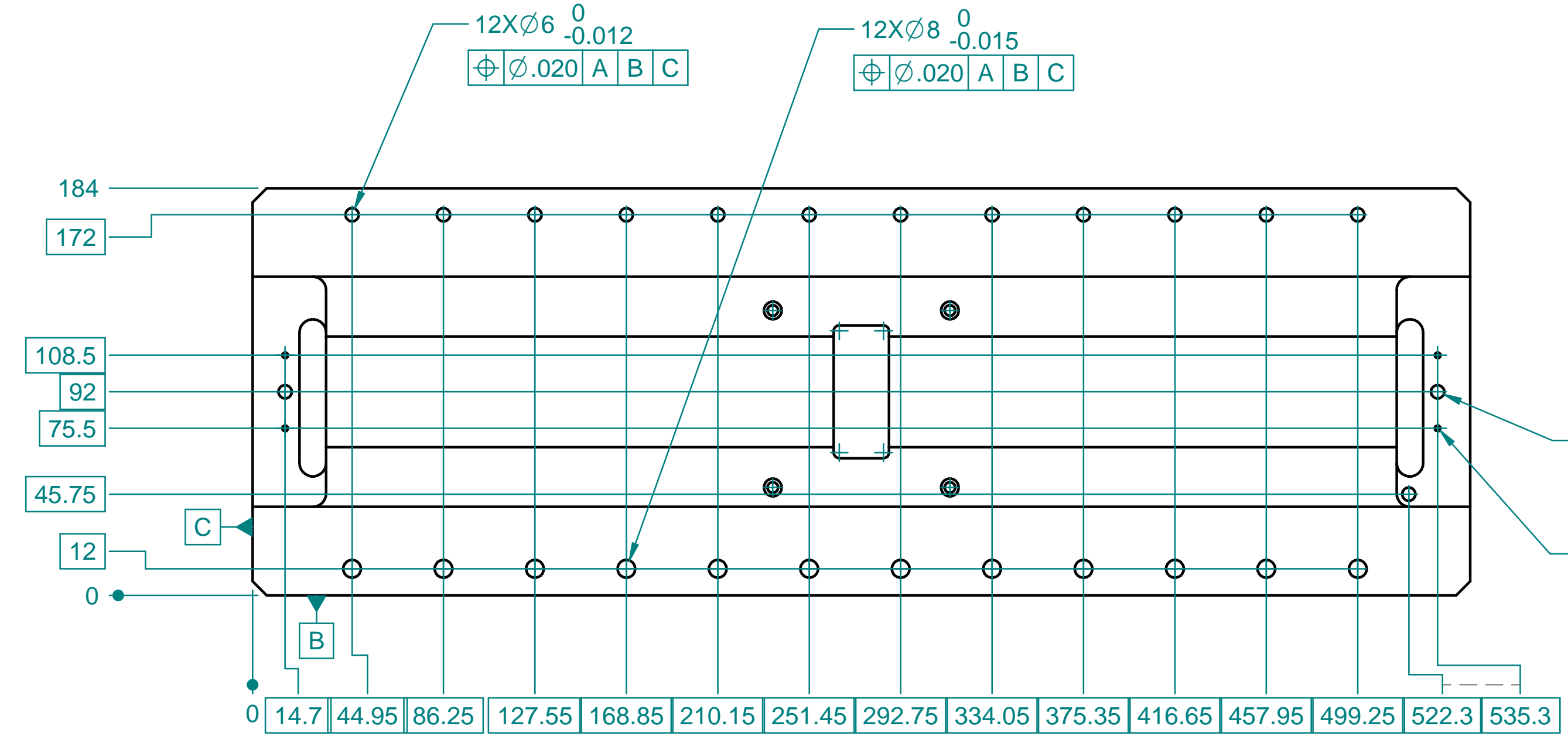


NOTES UNLESS OTHERWISE SPECIFIED:

1. MATERIAL: SEE TABLE
2. EMBOSS OR ENGRAVE PART AND REVISION NUMBER APPROX. WHERE SHOWN
3. ALL DIMENSIONS AND TOLERANCES APPLY IN A FREE STATE CONDITION
4. DEGREASE WITH ALCOHOL AND CUSHION TO PROTECT FROM HANDLING DAMAGE

**CHECK-PRINT**  
 newbry  
 02-14-2022 02:44:02 PM



ITEM	PART NO	TITLE OR DESCRIPTION	MATERIAL	QTY
5		MISUMI MSH6-12	SST	1
4		MISUMI MSH6-20	SST	2
3		MISUMI MSH6-35	SST	12
2		MISUMI MSH8-50	SST	12
1	DSG-000014440	PLATE, STAVE HANDLING, 19-1, OB	ALUMINUM MIC-6	1

DIMENSIONING AND TOLERANCING IS IN ACCORDANCE WITH ASME Y14.5-2009

UNLESS OTHERWISE SPECIFIED DIMENSIONS ARE IN MILLIMETERS

TOLERANCES:  
 BREAK EDGES 0.13 - 0.4  
 INTERNAL CORNERS R 0.4 MAX  
 ANGLE ± 1° ALL SURF 125

SCALE: 1:2  
 DO NOT SCALE DRAWING

ESTIMATED MASS: 4.934 kg  
 DWG TYPE: ASSY

**SLAC** NATIONAL ACCELERATOR LABORATORY  
**U.S. DEPARTMENT OF ENERGY**

ATLAS ITK LOADING FIXTURE, OB STAVE, BASEPLATE AND PINS

THE DRAWINGS, SPECIFICATIONS AND OTHER DATA HEREIN PROVIDED SHALL NOT BE COPIED, PUBLISHED OR OTHERWISE FURTHER DISSEMINATED WITHOUT PRIOR WRITTEN PERMISSION OF STANFORD UNIVERSITY/SLAC

ENGR S. NEWBRY  
 DWN S. NEWBRY  
 CHKR ---

DATE 20220214

APPROVALS

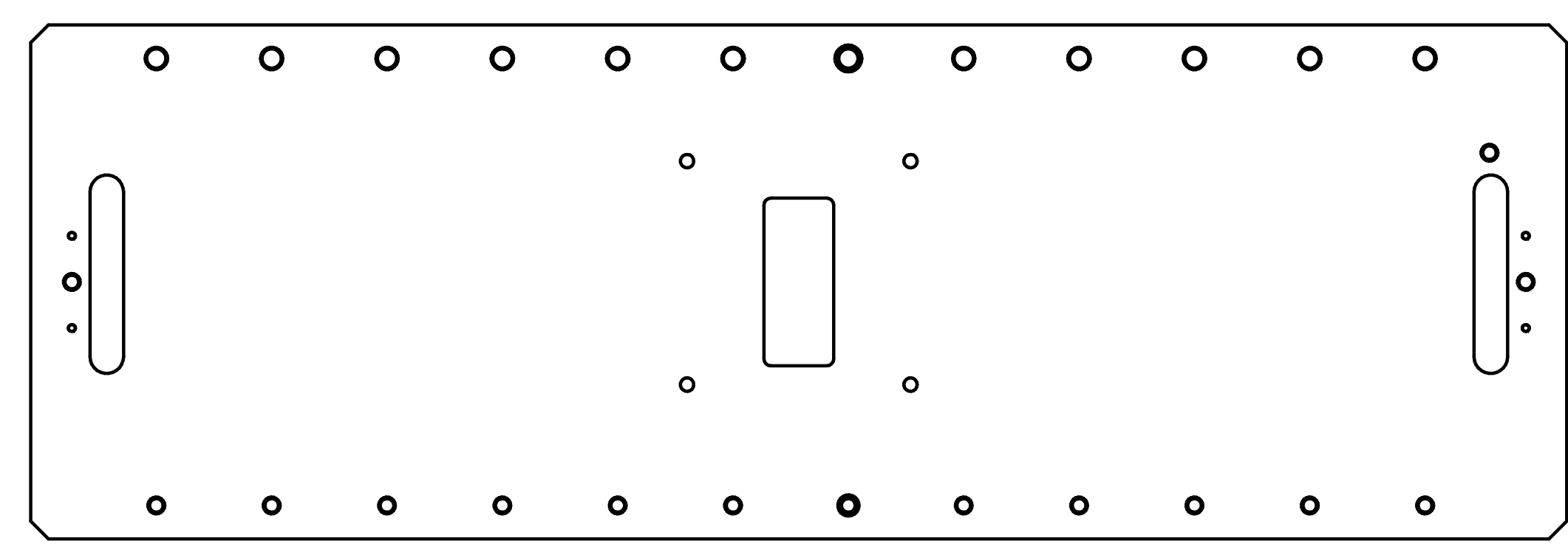
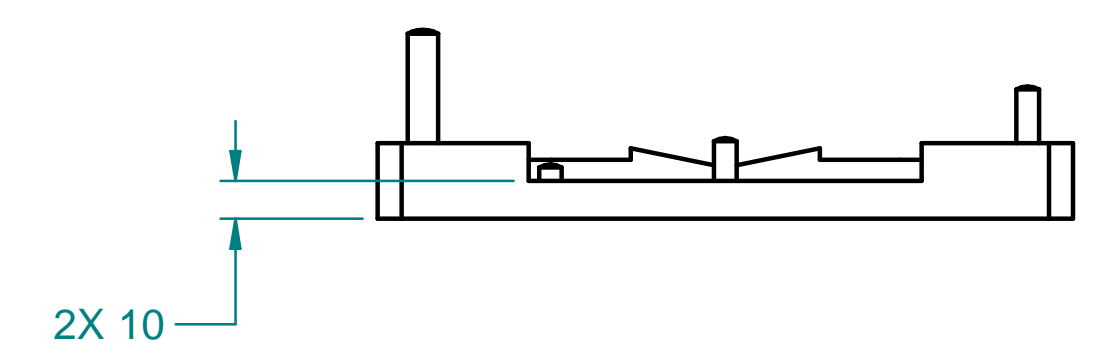
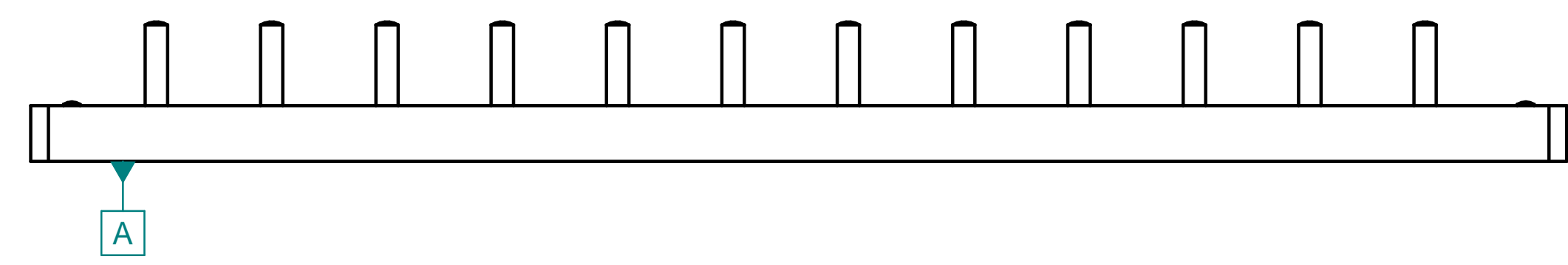
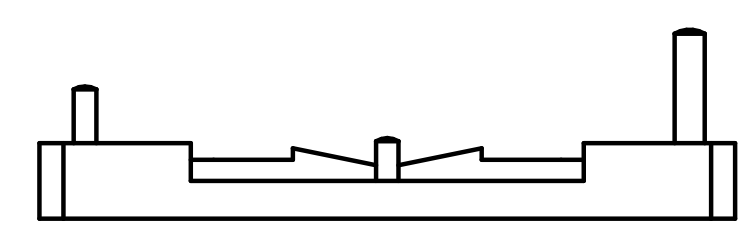
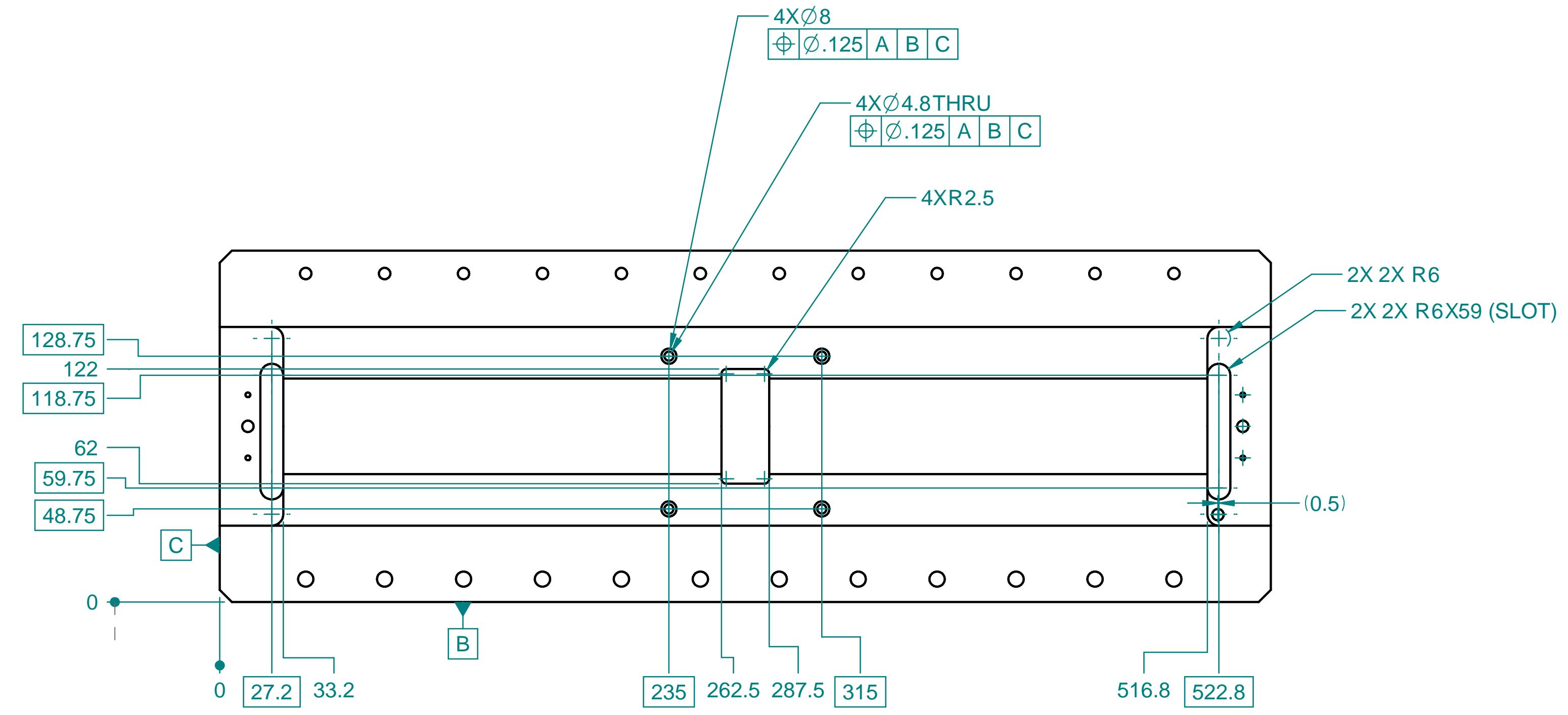
DRAWING NUMBER: REF-000203575  
 REVISION NUMBER: A

REF-000202041  
 NEXT ASSEMBLIES:

DIMENSIONS <6 ±0.1 >6 ±0.2 >30 ±0.3 >120 ±0.5 >315 ±0.8 >1000 ±1.2 >2000 ±2

GENERAL TOLERANCES ±0.1 ±0.2 ±0.3 ±0.5 ±0.8 ±1.2 ±2

REF-000203575.dft



---	DIMENSIONING AND TOLERANCING IS IN ACCORDANCE WITH ASME Y14.5-2009	SCALE: 1:2 DO NOT SCALE DRAWING	ESTIMATED MASS: 4.934 kg	DWG TYPE: ASSY
---	UNLESS OTHERWISE SPECIFIED DIMENSIONS ARE IN MILLIMETERS	<b>SLAC</b> NATIONAL ACCELERATOR LABORATORY	<b>U.S. DEPARTMENT OF ENERGY</b>	<b>ATLAS ITk LOADING FIXTURE, OB STAVE, BASEPLATE AND PINS</b>
---	TOLERANCES: BREAK EDGES 0.13 - 0.4 INTERNAL CORNERS R 0.4 MAX	THE DRAWINGS, SPECIFICATIONS AND OTHER DATA HEREIN PROVIDED SHALL NOT BE COPIED, PUBLISHED OR OTHERWISE FURTHER DISSEMINATED WITHOUT PRIOR WRITTEN PERMISSION OF STANFORD UNIVERSITY/SLAC		
---	ANGLE ± 1° ALL SURF	ENGR S. NEWBRY DWN S. NEWBRY CHKR ---	DATE 20220214	APPROVALS ---
REF-000202041	DIMENSIONS <6 ±0.1 >6 ±0.2 >30 ±0.3 >120 ±0.5 >315 ±0.8 >1000 ±1.2 >2000 ±2	DRAWING NUMBER <b>REF-000203575</b>		
NEXT ASSEMBLIES:	GENERAL TOLERANCES	REVISION NUMBER <b>A D</b>		