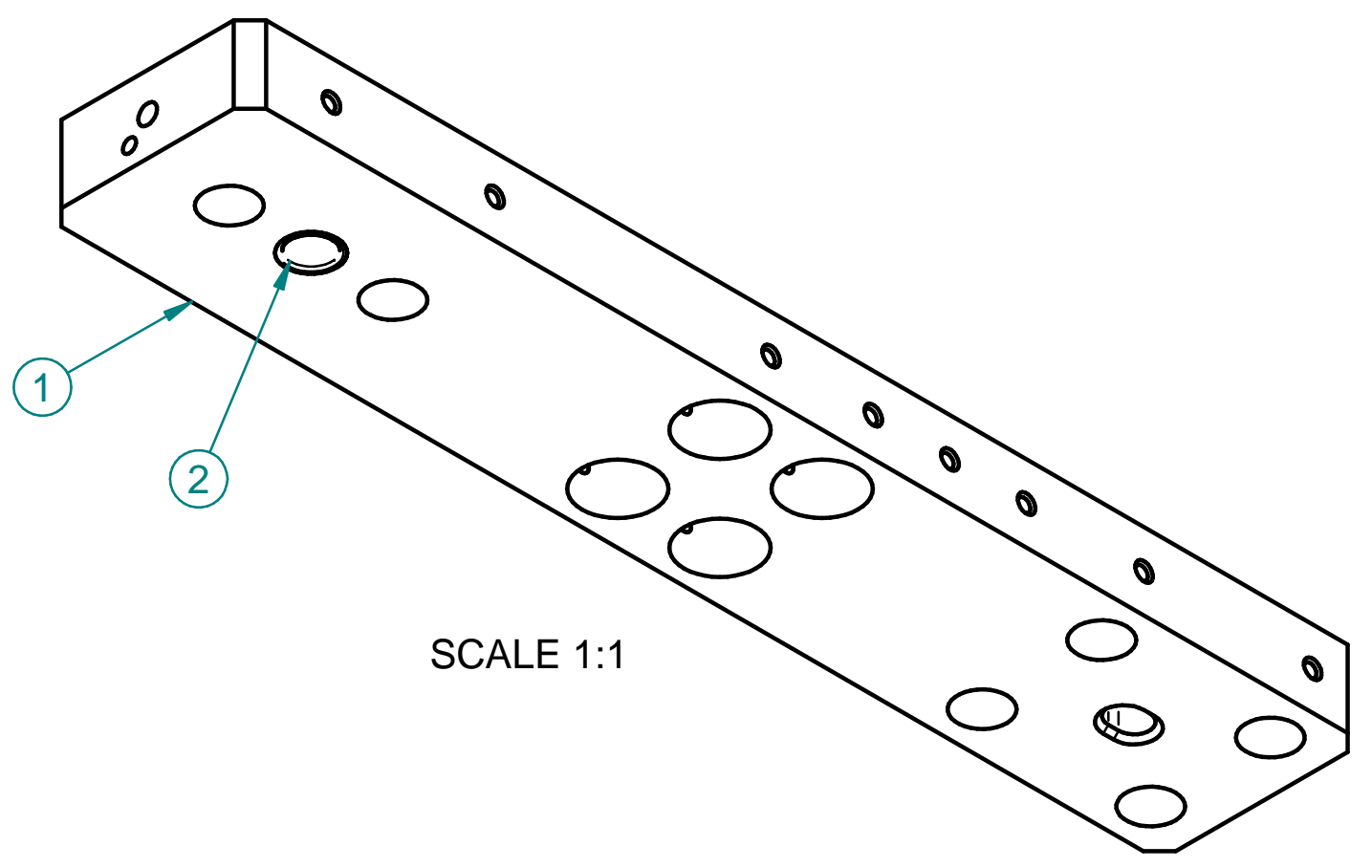
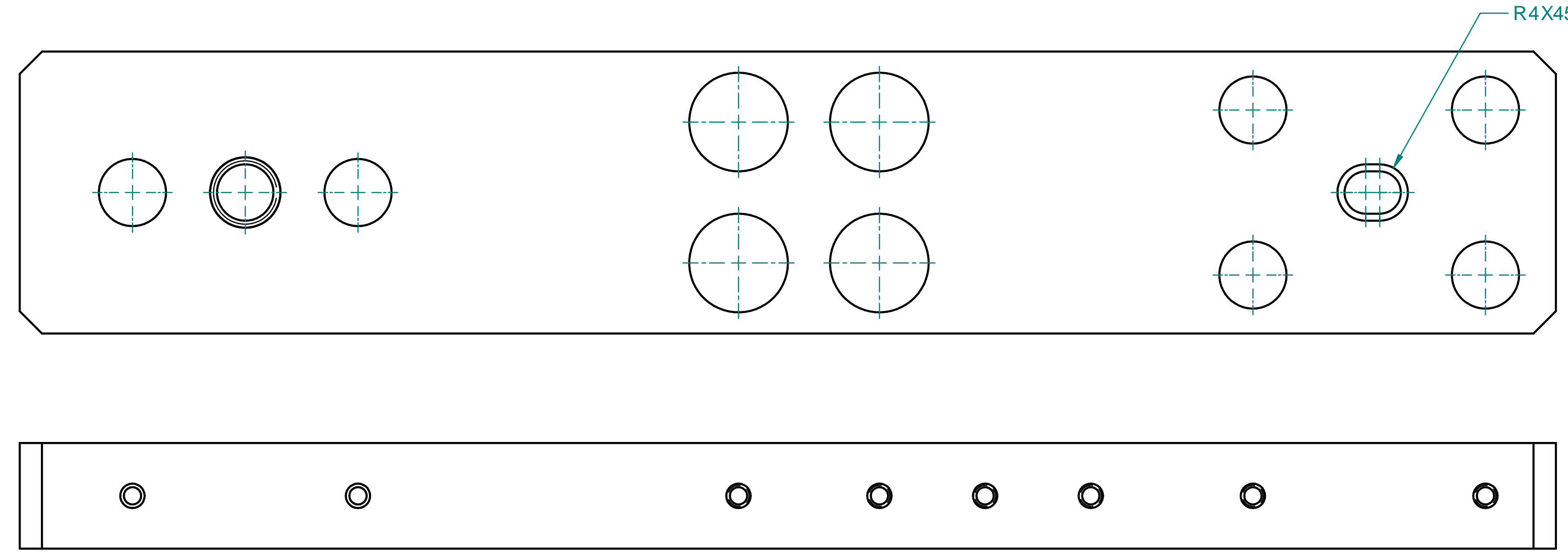
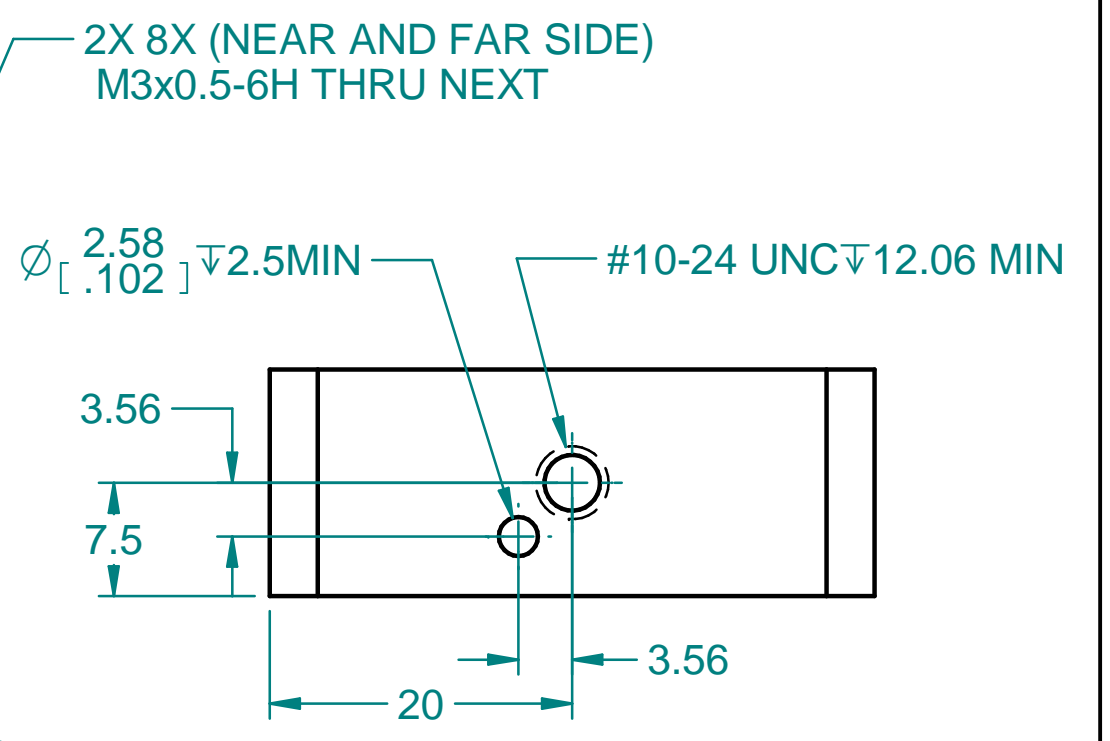
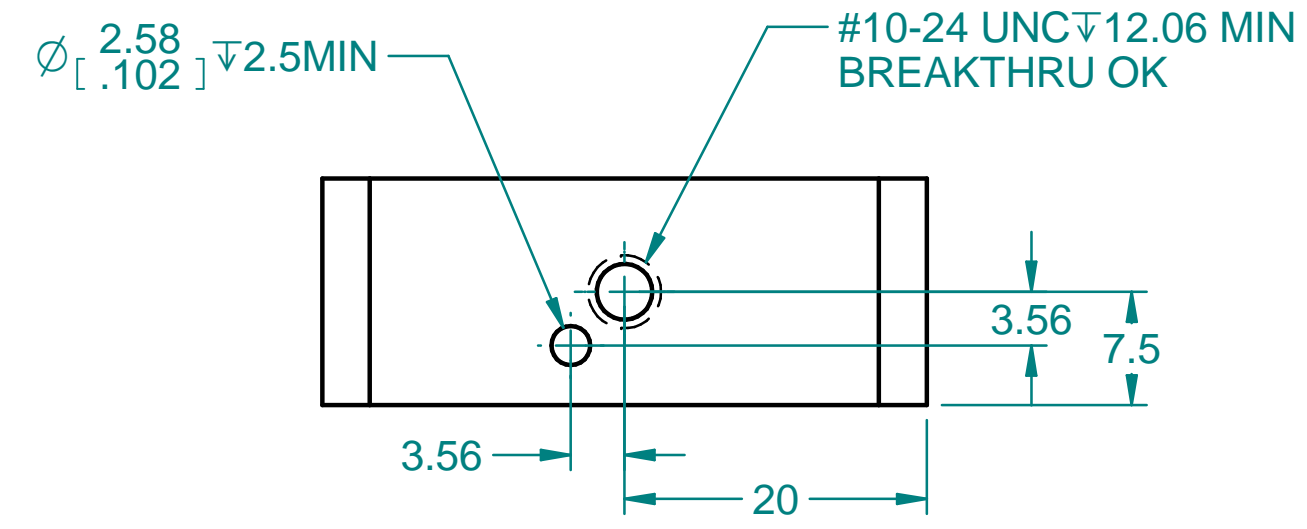
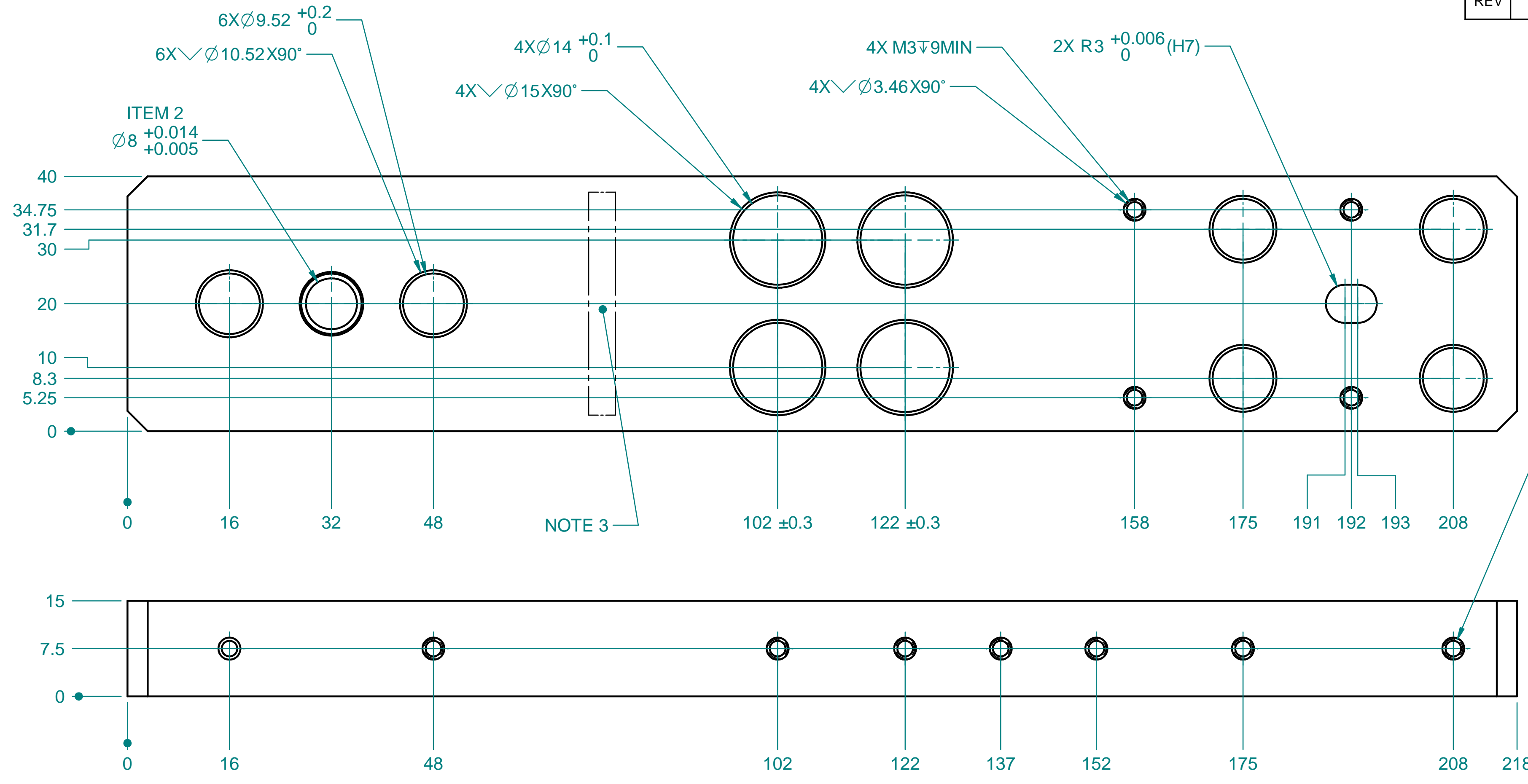


- NOTES UNLESS OTHERWISE SPECIFIED:
1. MATERIAL: SEE TABLE.
  2. APPLY CHEMICAL CONVERSION COATING (ALODINE) MIL-DTL-5541 TYPE I, CLASS 1A, COLOR GOLD.
  3. EMBOSS OR ENGRAVE PART AND REVISION NUMBER APPROX. WHERE SHOWN.
  4. INSTALL ITEM 2 (BUSHING) AS SHOWN. ALL DIMENSIONS APPLY AFTER PLATING AND BUSHING INSTALLED. TEMPERATURE 20C±1C (68°F±2°F) DURING INSPECTION.

**CHECK-PRINT**  
newbry  
02-24-2022 12:19:35 PM



ITEM	TITLE OR DESCRIPTION	QTY
2	MISUMI JBAUN6-15 (BUSHING, 6ID X 15LG, NI PLATED)	1
1	MATERIAL: ALUMINUM MIC-6, 10IN X 1.5IN X 1IN	1

---	DIMENSIONING AND TOLERANCING IS IN ACCORDANCE WITH ASME Y14.5-2009	SCALE: 2:1 DO NOT SCALE DRAWING	ESTIMATED MASS: 0.327 kg	DWG TYPE: PART
---	UNLESS OTHERWISE SPECIFIED DIMENSIONS ARE IN MILLIMETERS	<b>SLAC</b> NATIONAL ACCELERATOR LABORATORY	<b>U.S. DEPARTMENT OF ENERGY</b>	
---	TOLERANCES: BREAK EDGES 0.13 - 0.4 INTERNAL CORNERS R 0.4 MAX	THE DRAWINGS, SPECIFICATIONS AND OTHER DATA HEREIN PROVIDED SHALL NOT BE COPIED, PUBLISHED OR OTHERWISE FURTHER DISSEMINATED WITHOUT PRIOR WRITTEN PERMISSION OF STANFORD UNIVERSITY/SLAC		
---	ANGLE ± 0.5 ALL SURF 1.6	APPROVALS		
---	DSG-000014490	ENGR NEWBRY DWN NEWBRY CHKR ---	DATE 20200610	---
---	NEXT ASSEMBLIES:	ATLAS INNER PIXEL MECH LOADING TOOLING LOADING BRIDGE, OB 19-1		
---	DIMENSIONS <6 >6 >30 >120 >315 >1000 >2000	DRAWING NUMBER REF-000202289		
---	GENERAL TOLERANCES ±0.1 ±0.2 ±0.3 ±0.5 ±0.8 ±1.2 ±2	REVISION NUMBER A D		