

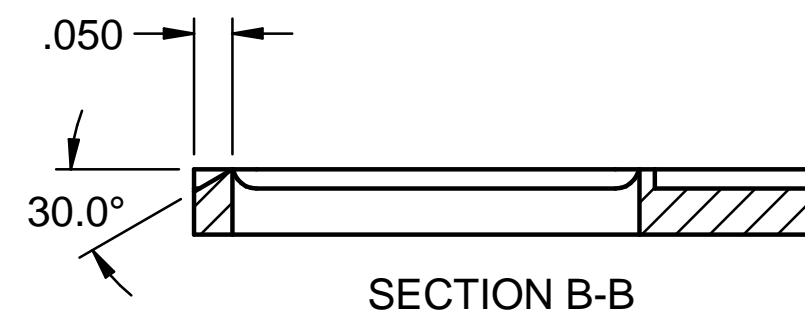
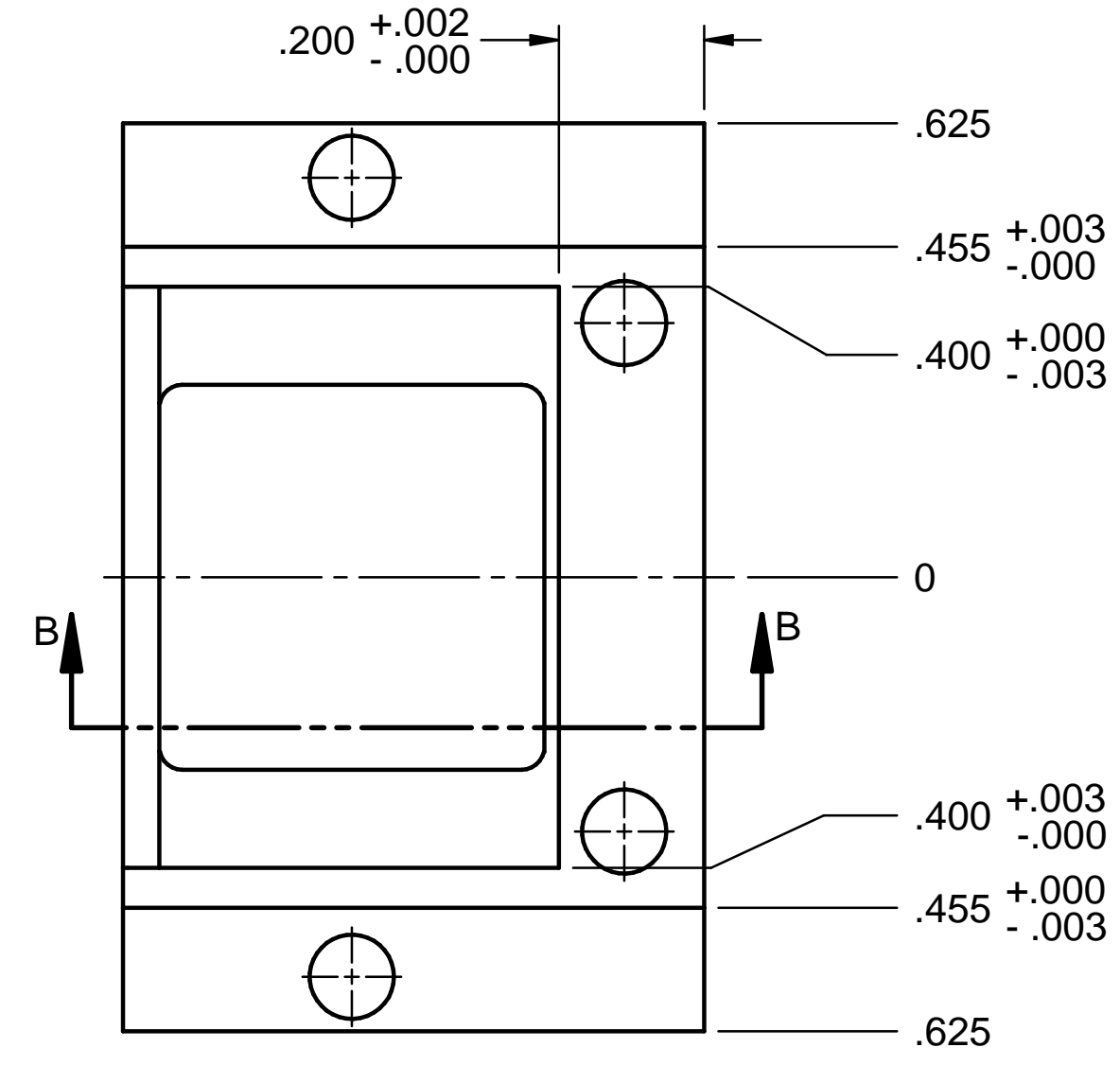
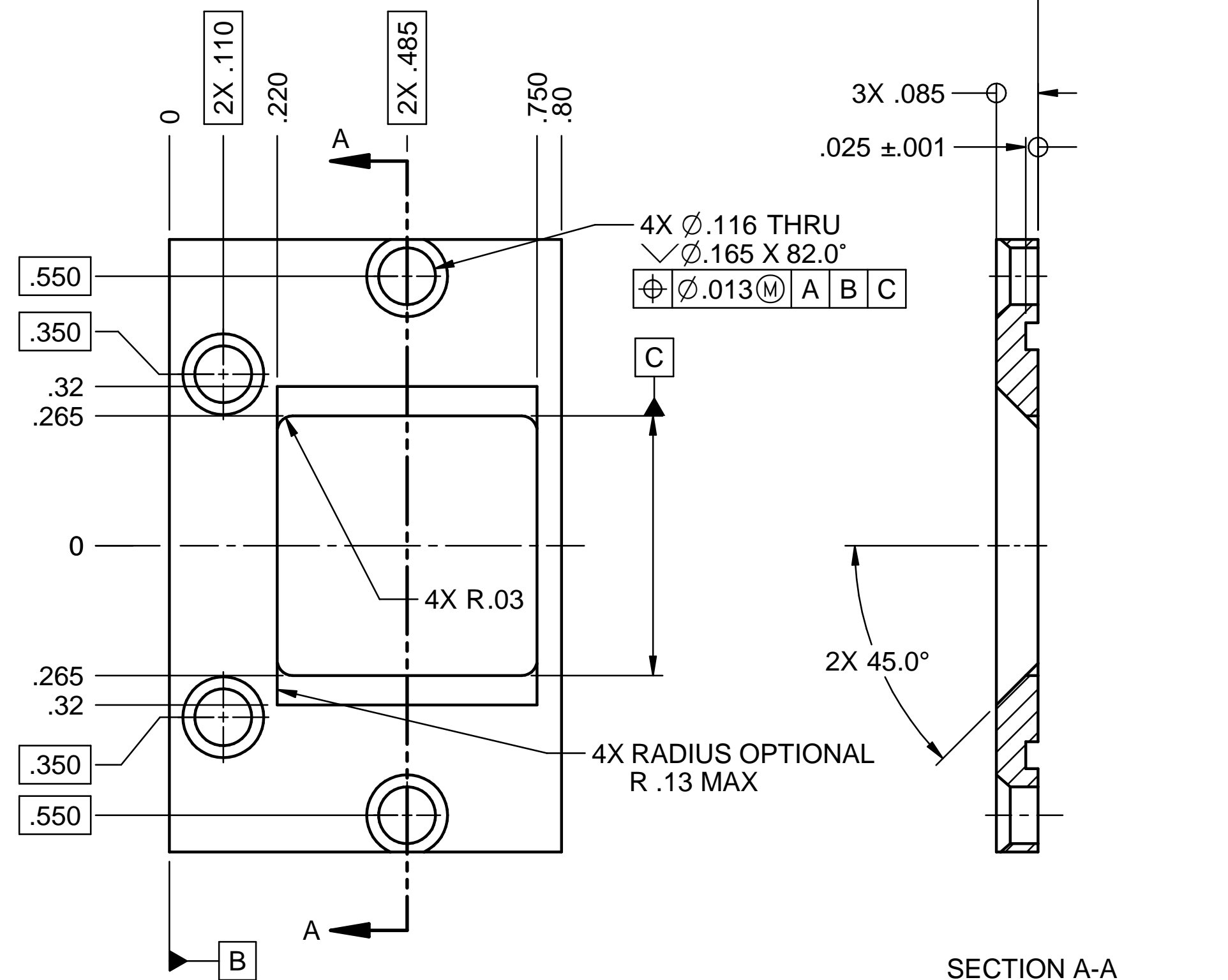
REV	DESCRIPTION	DWN	CHK	RAP	VPD	DATE
01	PER ECR-Txxxxx	GB	GB	SG		5/3 2021

D

C

B

A



**ULTRA HIGH
VAC PART**
FABRICATE PER
FP-202-631-14

NOTES: UNLESS OTHERWISE SPECIFIED

- 1 MATERIAL: AL BAR, IN ACCORDANCE WITH ASTM B221. MILL SOURCE CERTIFICATES REQUIRED, INCLUDING HEAT NUMBER AND CHEMICAL ANALYSIS.
- 2 BAG AND LABEL WITH PART NUMBER AND REVISION.

1	RECT BAR, AL 6061-T6511, ASTM B221
STOCK NO	MATERIAL DESCRIPTION

**ESTIMATED MASS
.014 lbm**

---	DIMENSIONING AND TOLERANCING IS IAW ASME Y14.5M-1994 AND Y14.41-2003	SCALE: 4:1 DO NOT SCALE DRAWING	CAD FILE NAME: pf25740298.dft
---	UNLESS OTHERWISE SPECIFIED DIMENSIONS ARE IN INCHES.	SLAC NATIONAL ACCELERATOR LABORATORY	FACET DIAGNOSTICS SYSTEMS
---	TOLERANCES: BREAK EDGES .005-.015	U.S. DEPARTMENT OF ENERGY	OTR PLANAR FOIL MT ASSY
---	INTERNAL CORNERS R.015 MAX	THE DRAWINGS, SPECIFICATIONS AND OTHER DATA HEREIN PROVIDED SHALL NOT BE COPIED, PUBLISHED OR OTHERWISE FURTHER DISSEMINATED WITHOUT PRIOR WRITTEN PERMISSION OF STANFORD UNIVERSITY/SLAC	BARE YAG OTR MOUNT
---	FRACTIONS ± ---	ENGR D. WALZ DWN G. BOUCHARD 10/24/2013 CHKR D. WALZ	APPROVALS D. WALZ C. IVERSON
---	DEC .XX ± .01 .XXX ± .005 .XXXX ± ---	DATE 10/24/2013	---
---	ANGLE ± 1°	63 ALL SURF	DRAWING NUMBER PF-257-402-98
SA-257-402-83	NEXT ASSEMBLIES:		REVISION NUMBER 1

PF-257-402-98

SH 1 OF 1