

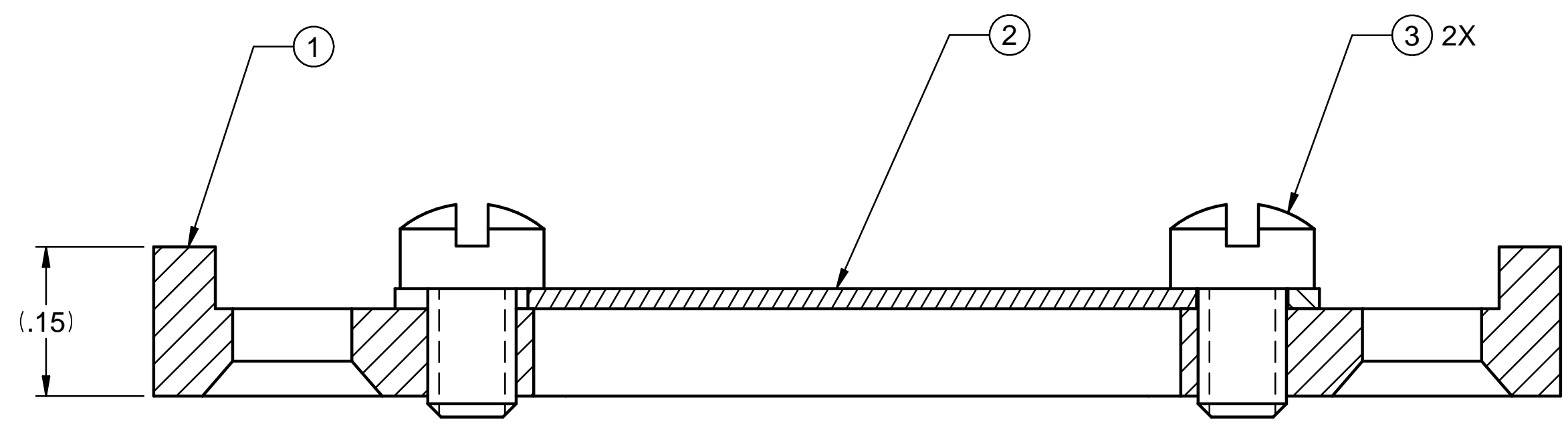
4

3

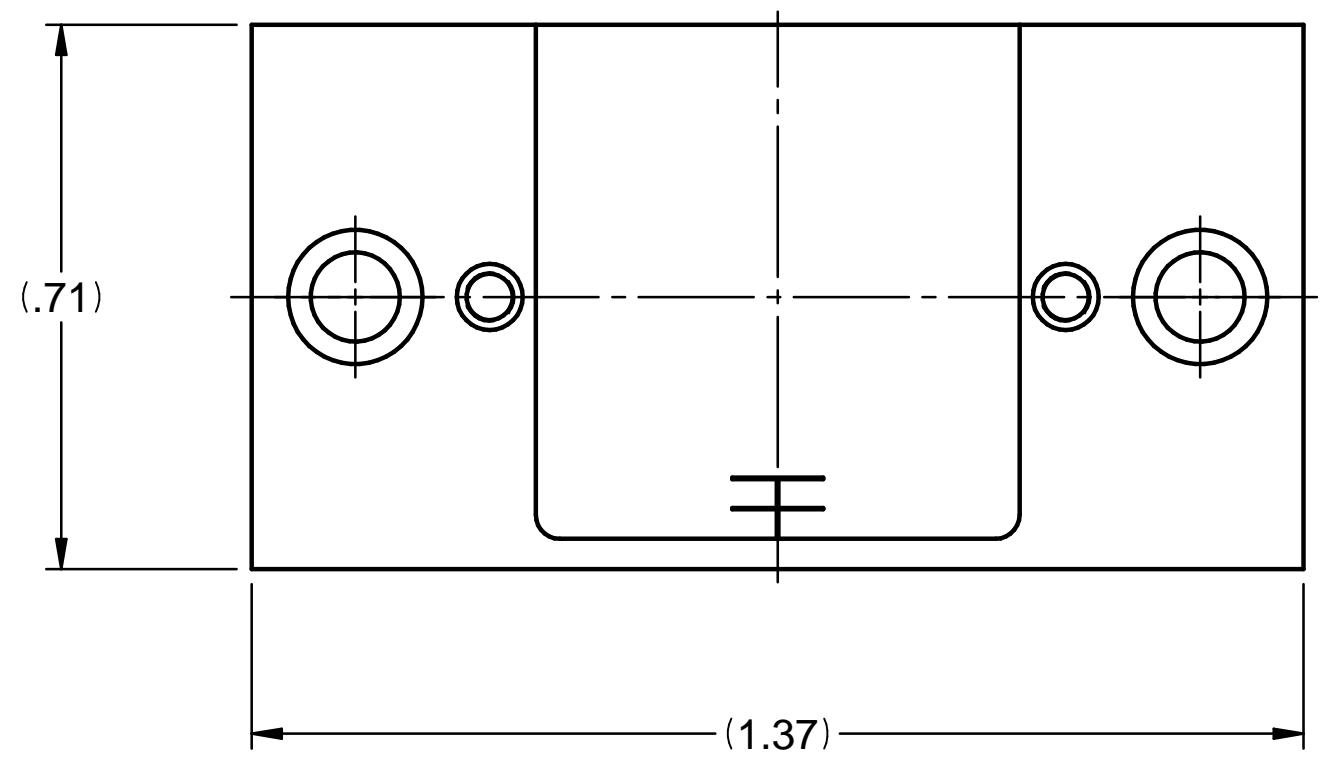
2

1

REV	DESCRIPTION	DWN	CHKR	APVD	DATE
-----	-------------	-----	------	------	------



SCALE: 8:1



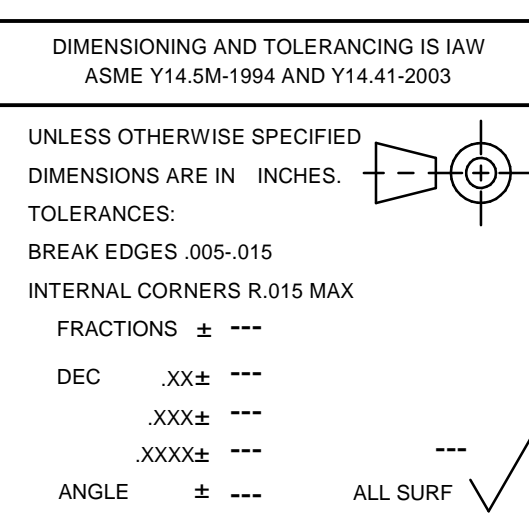
**ULTRA HIGH
VAC PART**
FABRICATE PER
FP-202-631-14

NOTES: UNLESS OTHERWISE SPECIFIED
1 BAG AND LABEL WITH PART NUMBER AND REVISION.

3	UC COMPONENTS FL-202-SVA	SCREW, FILLISTER HEAD SLOTTED, 2-56 X .125 LG, 18-8 SST, SLOT VENT, SIL PLTD	2
2	PF-257-402-38	TI DISK, 18MM, SCREW MT	1
1	PF-257-402-45	DISK MOUNT, 18MM	1
ITEM	STOCK OR PART NO	TITLE OR DESCRIPTION	QTY

**ESTIMATED MASS
.017 lbm**

---	DIMENSIONING AND TOLERANCING IS IAW ASME Y14.5M-1994 AND Y14.41-2003
---	UNLESS OTHERWISE SPECIFIED DIMENSIONS ARE IN INCHES.
---	TOLERANCES: BREAK EDGES .005-.015
---	INTERNAL CORNERS R.015 MAX
---	FRACTIONS ± ---
---	DEC .XX± ---
---	.XXX± ---
---	.XXXX± ---
---	ANGLE ± ---
---	ALL SURF ✓
SA-257-402-48	
NEXT ASSEMBLIES:	



SCALE: 4:1
DO NOT SCALE DRAWING

SLAC NATIONAL ACCELERATOR LABORATORY

U.S. DEPARTMENT OF ENERGY

THE DRAWINGS, SPECIFICATIONS AND OTHER DATA HEREIN PROVIDED SHALL NOT BE COPIED, PUBLISHED OR OTHERWISE FURTHER DISSEMINATED WITHOUT PRIOR WRITTEN PERMISSION OF STANFORD UNIVERSITY/SLAC

ENGR D. WALZ DATE
DWN G. BOUCHARD 2-26-2014
CHKR D. WALZ

APPROVALS
D. WALZ
C. IVERSON

CAD FILE NAME: sa25740246-0.dft	
FACET DIAGNOSTICS SYSTEMS OTR PLANAR FOIL MT ASSY DISK MOUNT ASSY, 18MM	
DRAWING NUMBER SA-257-402-46	REVISION NUMBER 0
	C

FACET DIAG OTR MT DISK MT 18MM

4

3

2

SA-257-402-46

SH 1 OF 1