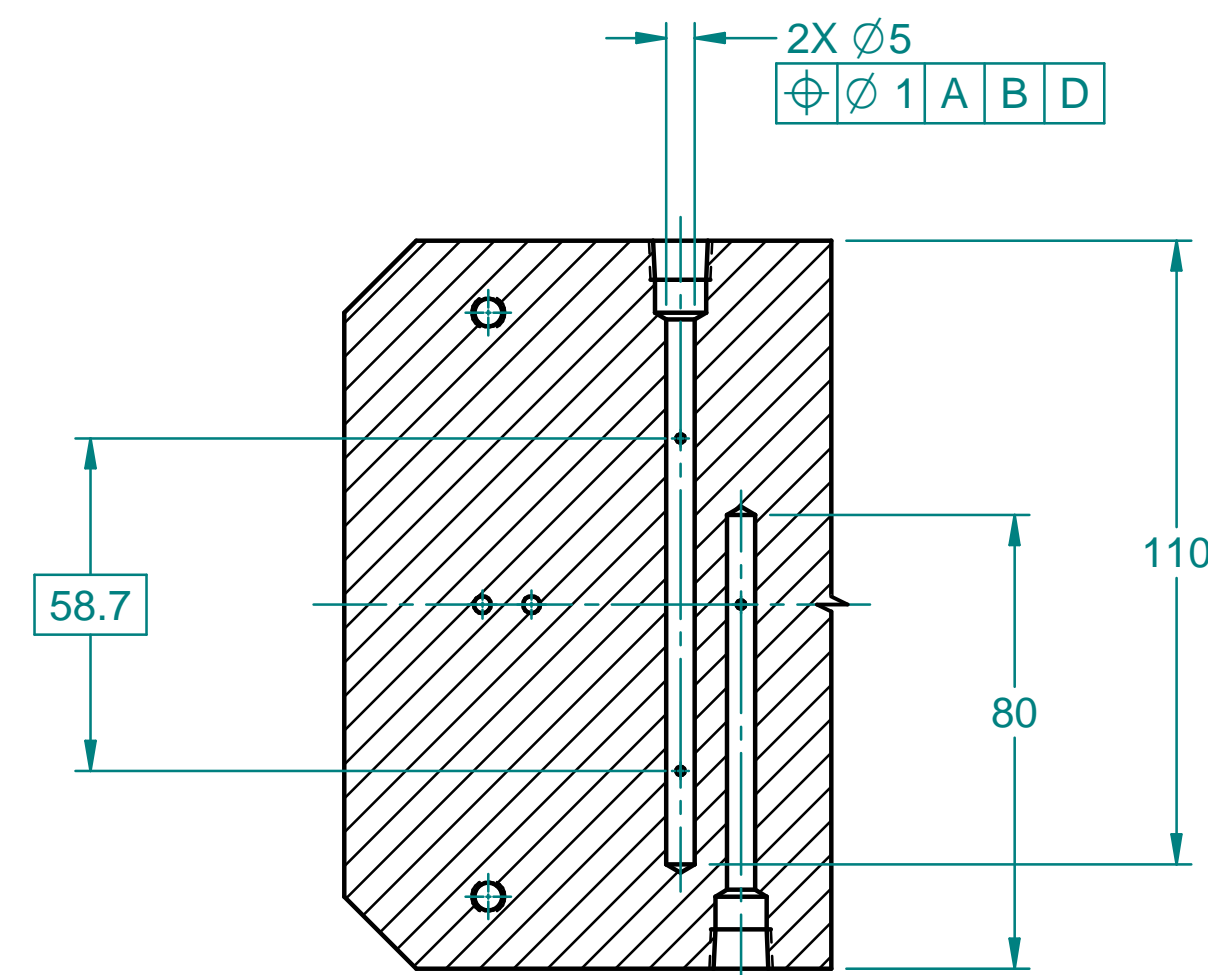
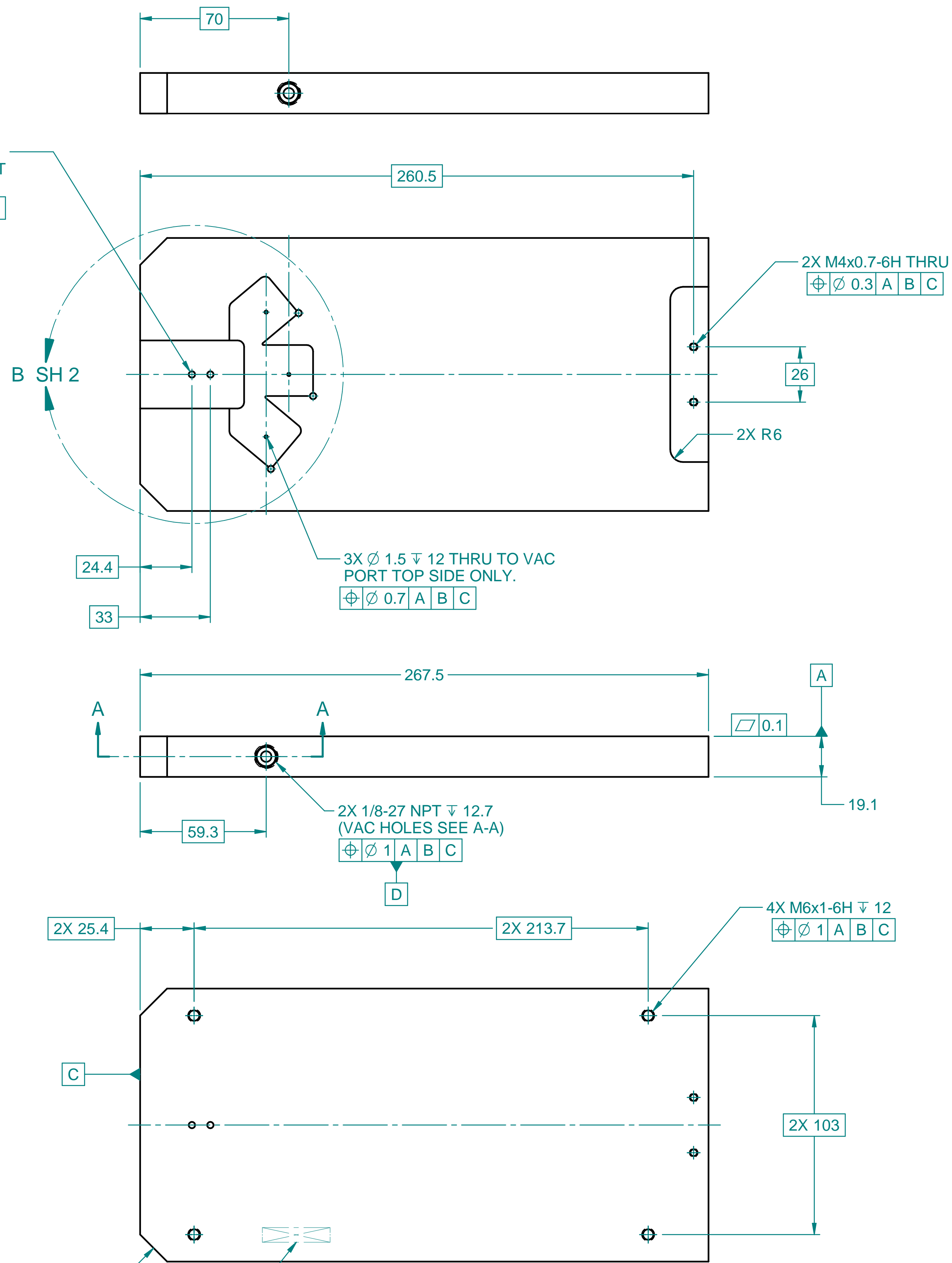


ISO VIEW  
SCALE 1 : 27



SECTION A-A



NOTES (UNLESS OTHERWISE SPECIFIED):

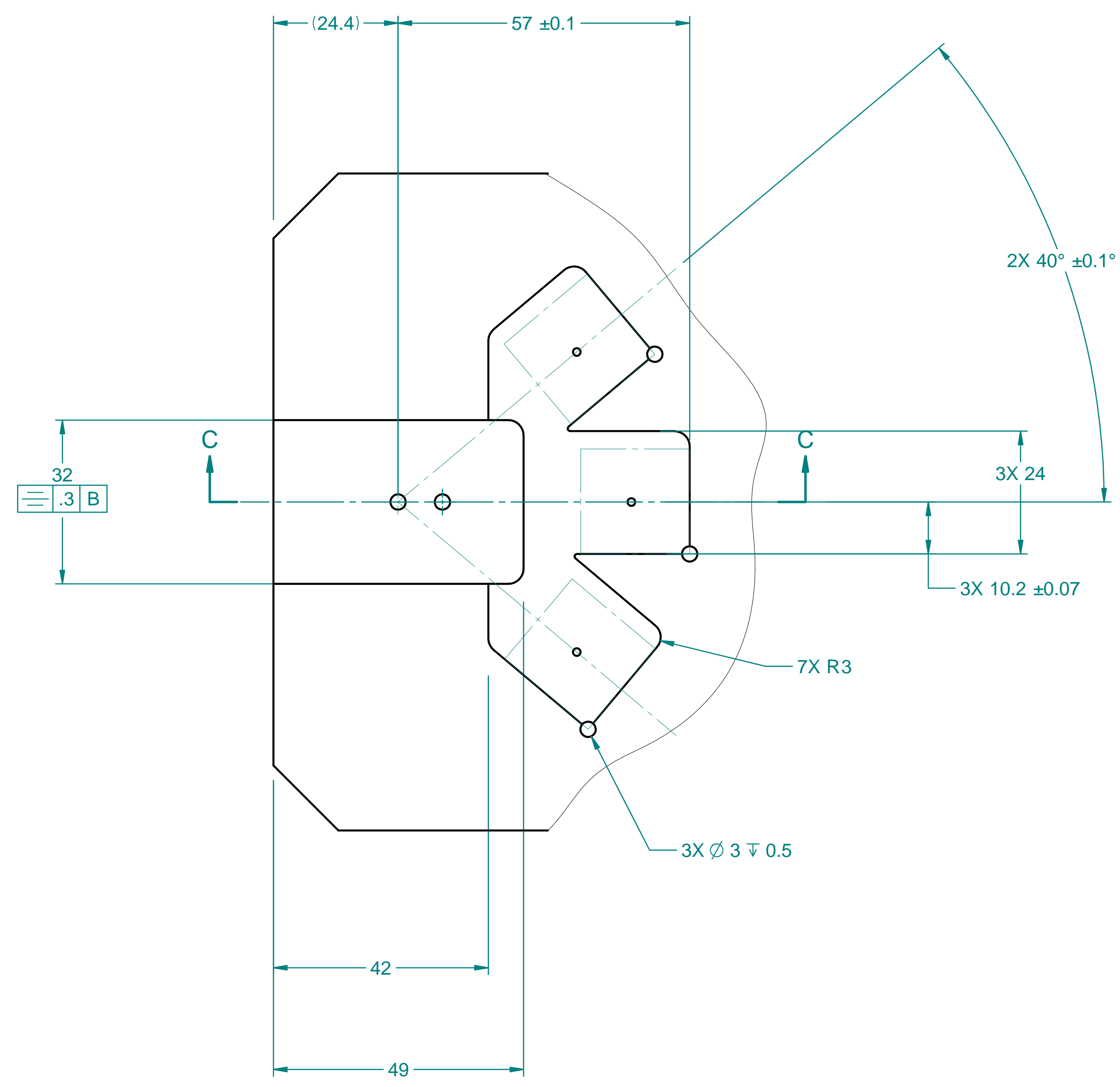
- 1 APPLY PART NUMBER AND REVISION APPROX WHERE SHOWN.
- 2 MATERIAL MAY BE SUBSTITUTED WITH AN EQUIVALENT FROM A DIFFERENT MANUFACTURER.

|   |  |
|---|--|
| DIMENSIONING AND TOLERANCING IS IN ACCORDANCE WITH ASME Y14.5-2009      |  |
| UNLESS OTHERWISE SPECIFIED DIMENSIONS ARE IN MILLIMETERS                |  |
| TOLERANCES:<br>BREAK EDGES 0.13 - 0.4 MAX<br>INTERNAL CORNERS R 0.4 MAX |  |
| ANGLE ± 1° ALL SURF 0.80  |  |
| SA-256-102-27   |  |
| NEXT ASSEMBLIES:  |  |
| DIMENSIONS  | < 6 ± 0.1   > 6 ± 0.2   > 30 ± 0.3   > 120 ± 0.5   > 315 ± 0.8   > 1000 ± 1.2   > 2000 ± 2 |
| GENERAL TOLERANCES  | ± 0.1   ± 0.2   ± 0.3   ± 0.5   ± 0.8   ± 1.2   ± 2  |

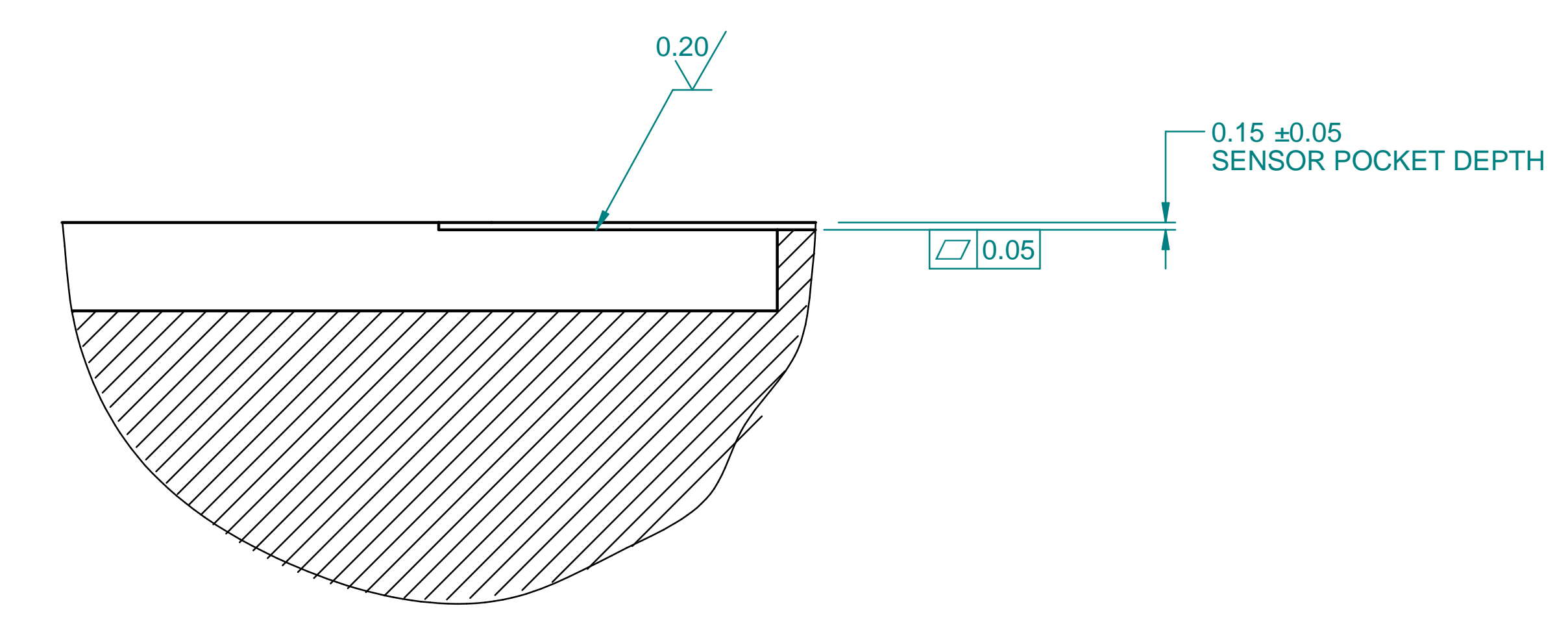
|  |
|--|
| SCALE: 3:4<br>DO NOT SCALE DRAWING                 |
| <b>SLAC</b><br>NATIONAL ACCELERATOR LABORATORY     |
| ENGR S. METCALFE<br>DWN G. LLOYD<br>CHKR O. FRENER |
| DATE 20190820                                      |

|                          |           |                               |
|--------------------------|-----------|-------------------------------|
| 2                        | 86825K842 | ALUMINUM MIC-6                |
| STOCK NO                 |           | MATERIAL DESCRIPTION          |
| ESTIMATED MASS: 1.735 kg |           | CAD FILE NAME: mo25610230.dft |

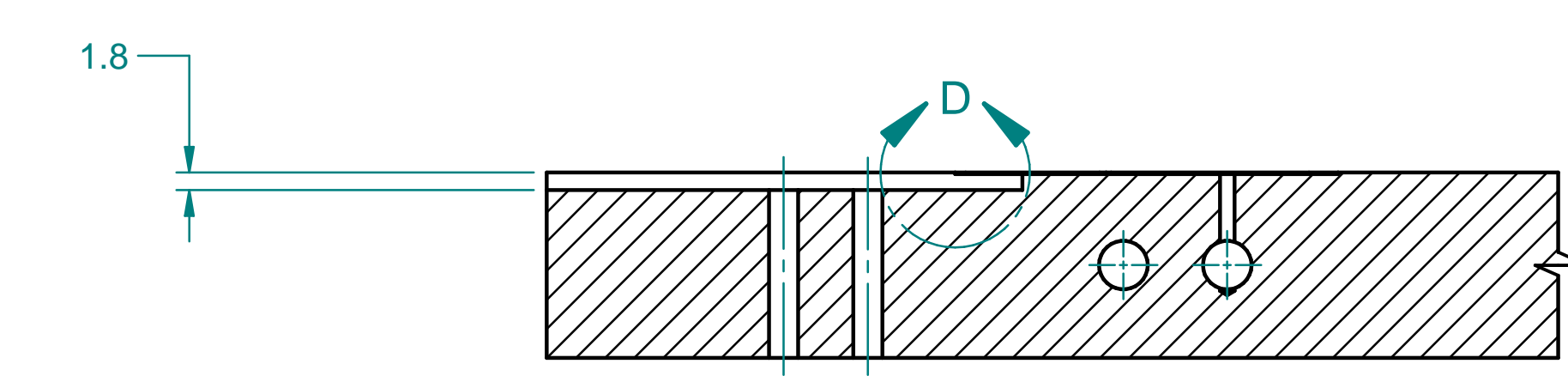
|   |  |   |                       |
|---|--|---|-----------------------|
| <b>U.S. DEPARTMENT OF ENERGY</b>  |  | ATLAS INNER PIXEL MECH<br>PICK UP TABLE ASSY SGL-TPL<br>PICK UP PLATE SGL-TPL |                       |
| THE DRAWINGS, SPECIFICATIONS AND OTHER DATA HEREIN PROVIDED SHALL NOT BE COPIED, PUBLISHED OR OTHERWISE FURTHER DISSEMINATED WITHOUT PRIOR WRITTEN PERMISSION OF STANFORD UNIVERSITY/SLAC |  | ---   |                       |
| APPROVALS<br>S. METCALFE  |  | DRAWING NUMBER<br>PF-256-102-30   | REVISION NUMBER<br>00 |
|   |  |   | D                     |



DETAIL B SH 2  
 3X SENSOR POCKETS  
 (SENSORS SHOWN IN PHANTOM)  
 SCALE 1.5 : 1



DETAIL D  
 SCALE 10 : 1



SECTION C-C  
 SCALE 1.5 : 1

|                  |   |   |                                  |   |
|------------------|---|---|----------------------------------|---|
| ---              | DIMENSIONING AND TOLERANCING IS IN ACCORDANCE WITH ASME Y14.5-2009          | SCALE: 3:4<br>DO NOT SCALE DRAWING  | ESTIMATED MASS: 1.735 kg         | CAD FILE NAME: mo25610230.dft   |
| ---              | UNLESS OTHERWISE SPECIFIED DIMENSIONS ARE IN MILLIMETERS                    | <b>SLAC</b><br>NATIONAL ACCELERATOR LABORATORY  | <b>U.S. DEPARTMENT OF ENERGY</b> | ATLAS INNER PIXEL MECH<br>PICK UP TABLE ASSY SGL-TPL<br>PICK UP PLATE SGL-TPL |
| ---              | TOLERANCES:<br>BREAK EDGES 0.13 - 0.4<br>INTERNAL CORNERS R 0.4 MAX         | THE DRAWINGS, SPECIFICATIONS AND OTHER DATA HEREIN PROVIDED SHALL NOT BE COPIED, PUBLISHED OR OTHERWISE FURTHER DISSEMINATED WITHOUT PRIOR WRITTEN PERMISSION OF STANFORD UNIVERSITY/SLAC |                                  |   |
| ---              | ANGLE ± 1° ALL SURF 0.80  | ENGR S. METCALFE<br>DWN G. LLOYD<br>CHKR O. FRENER  | DATE 20190723                    | APPROVALS<br>S. METCALFE  |
| SA-256-102-27    | DIMENSIONS <6 ±0.1 >6 ±0.2 >30 ±0.3 >120 ±0.5 >315 ±0.8 >1000 ±1.2 >2000 ±2 | DRAWING NUMBER PF-256-102-30  |                                  |   |
| NEXT ASSEMBLIES: | GENERAL TOLERANCES  | REVISION NUMBER 00  |                                  | D   |