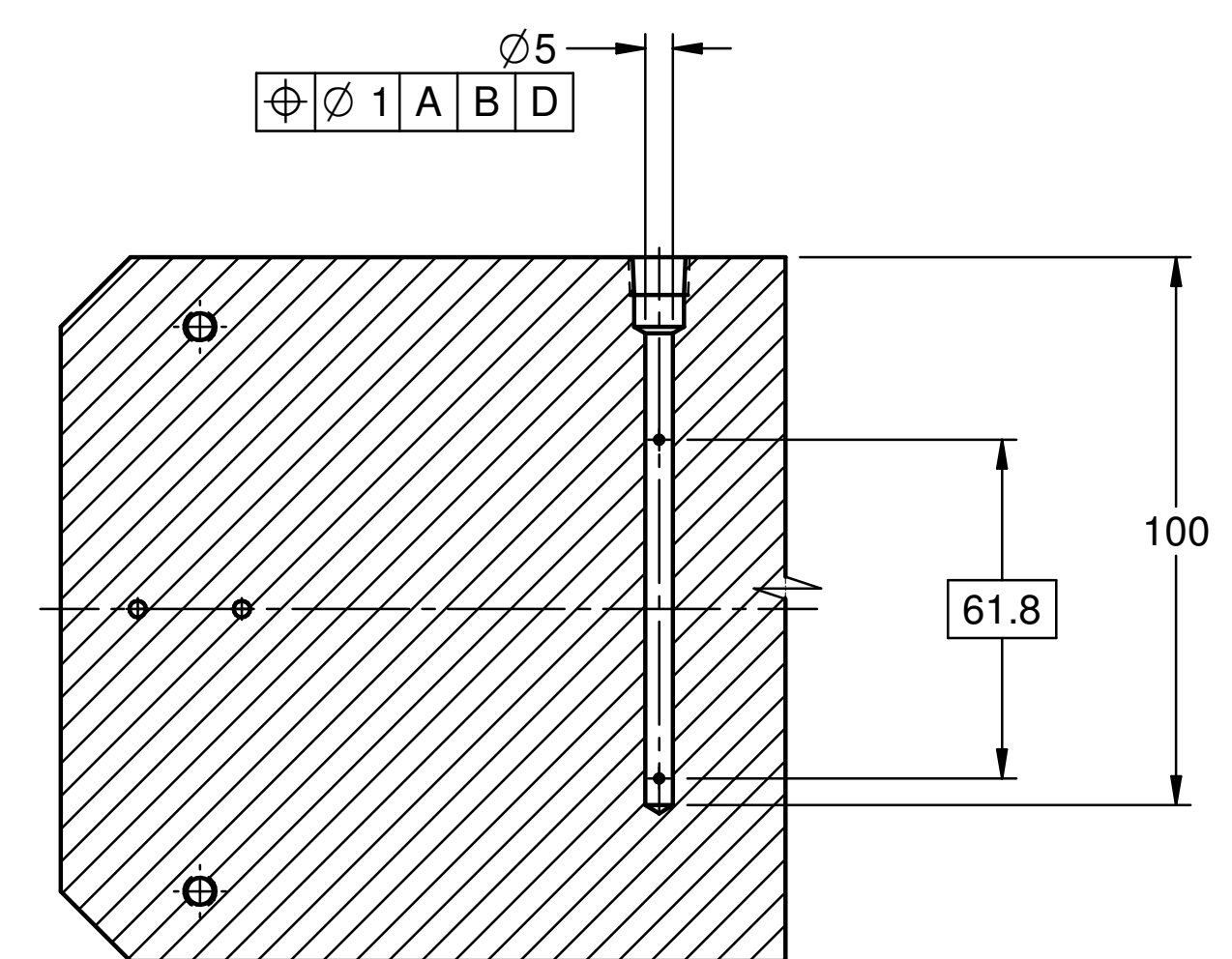
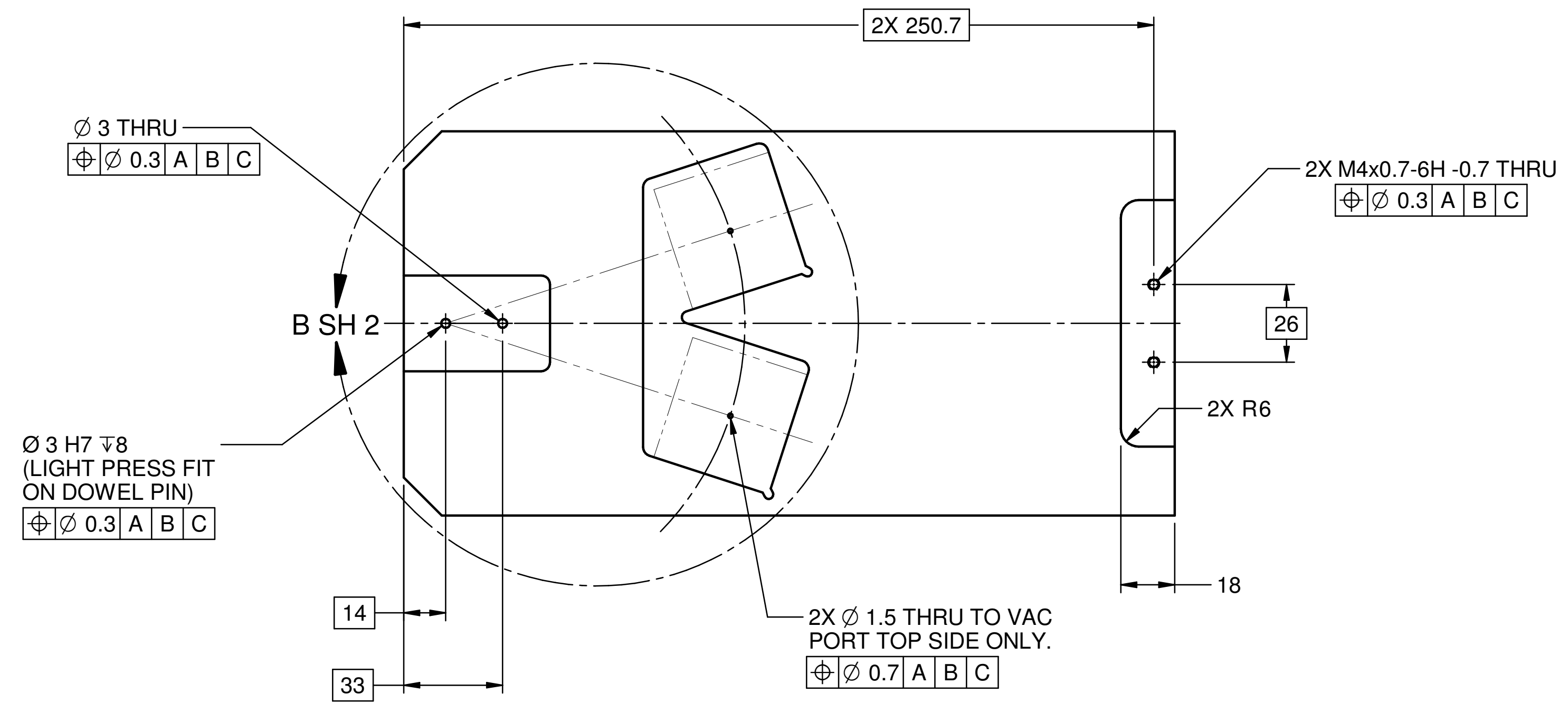
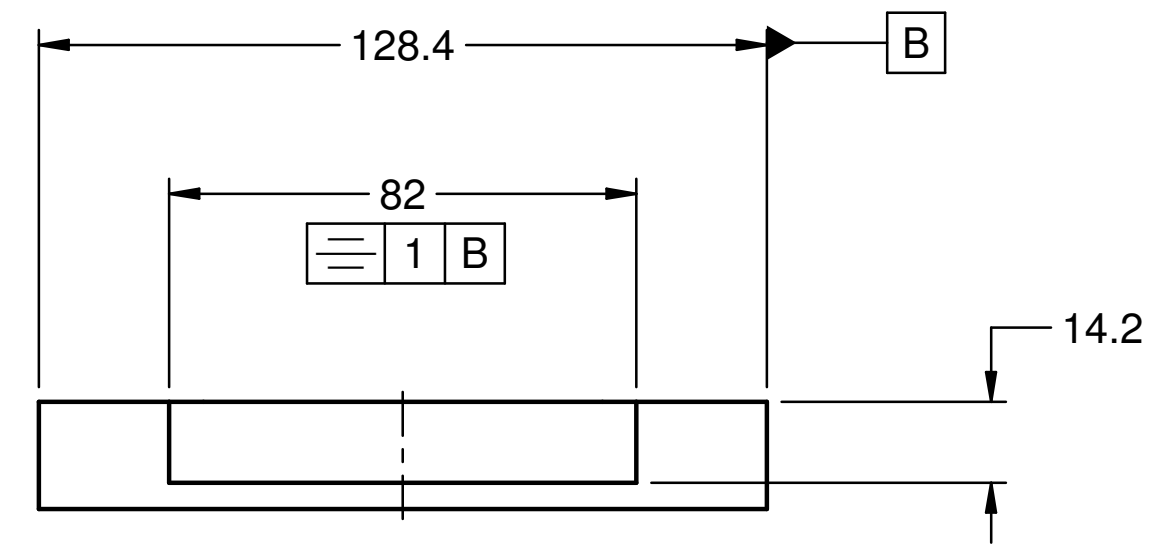
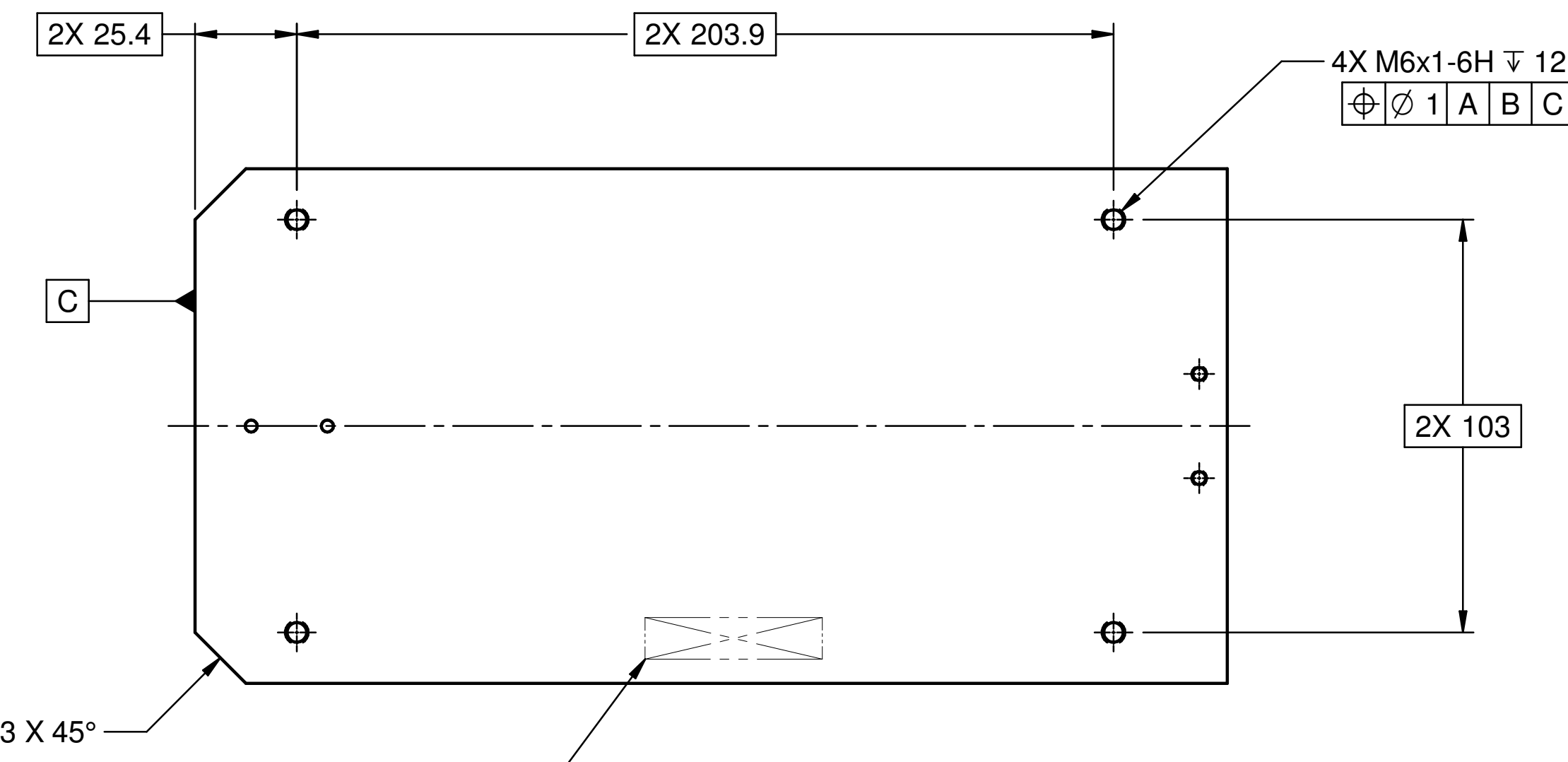
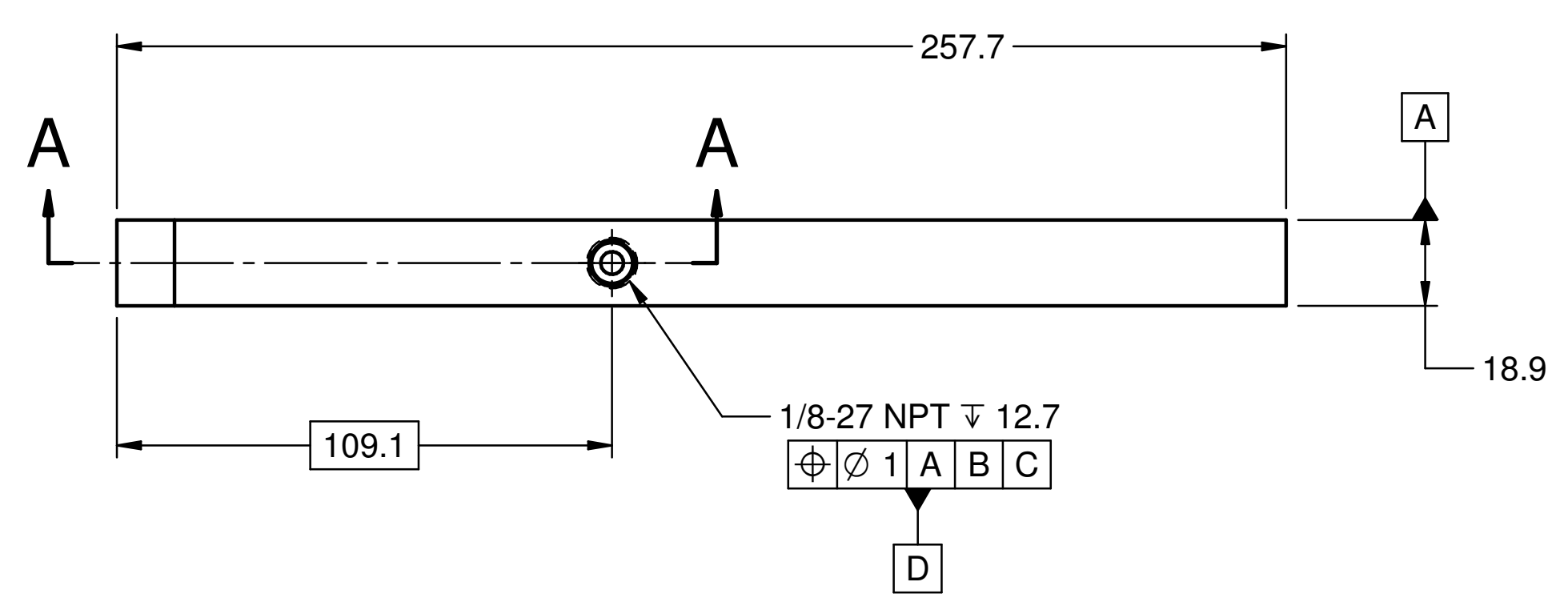


ISO VIEW  
SCALE 1:2



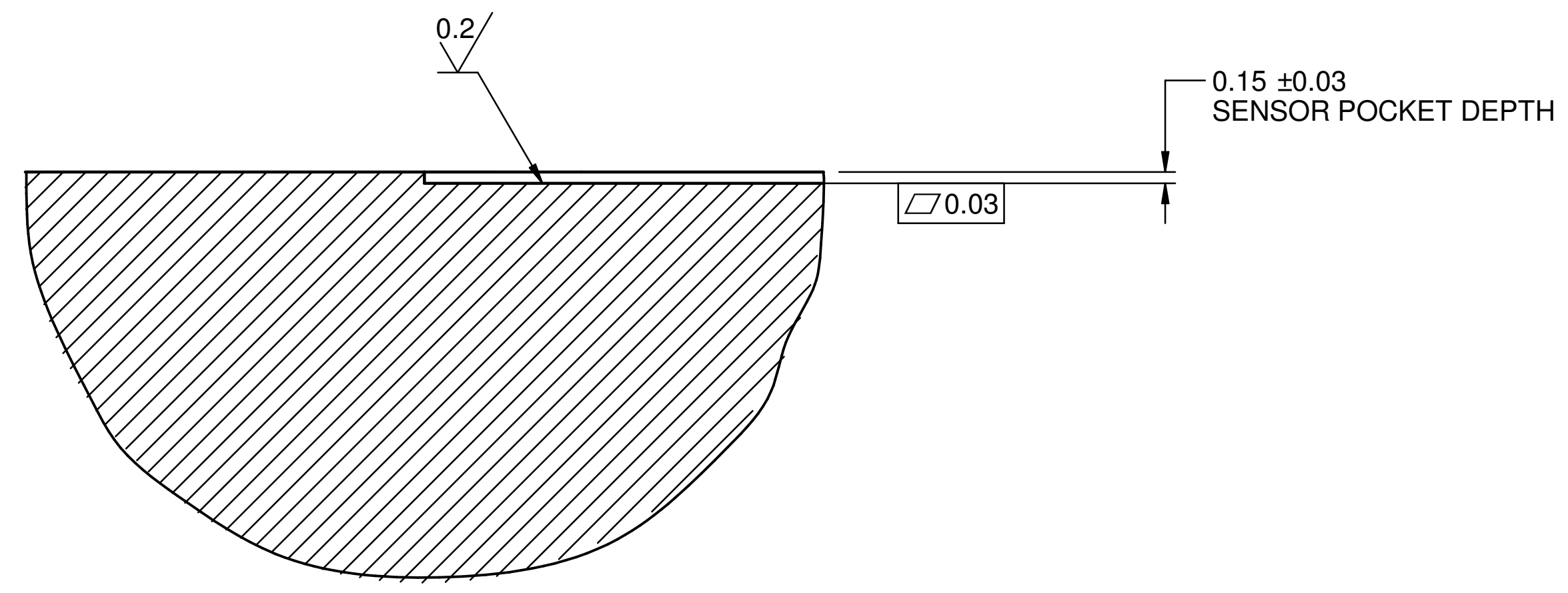
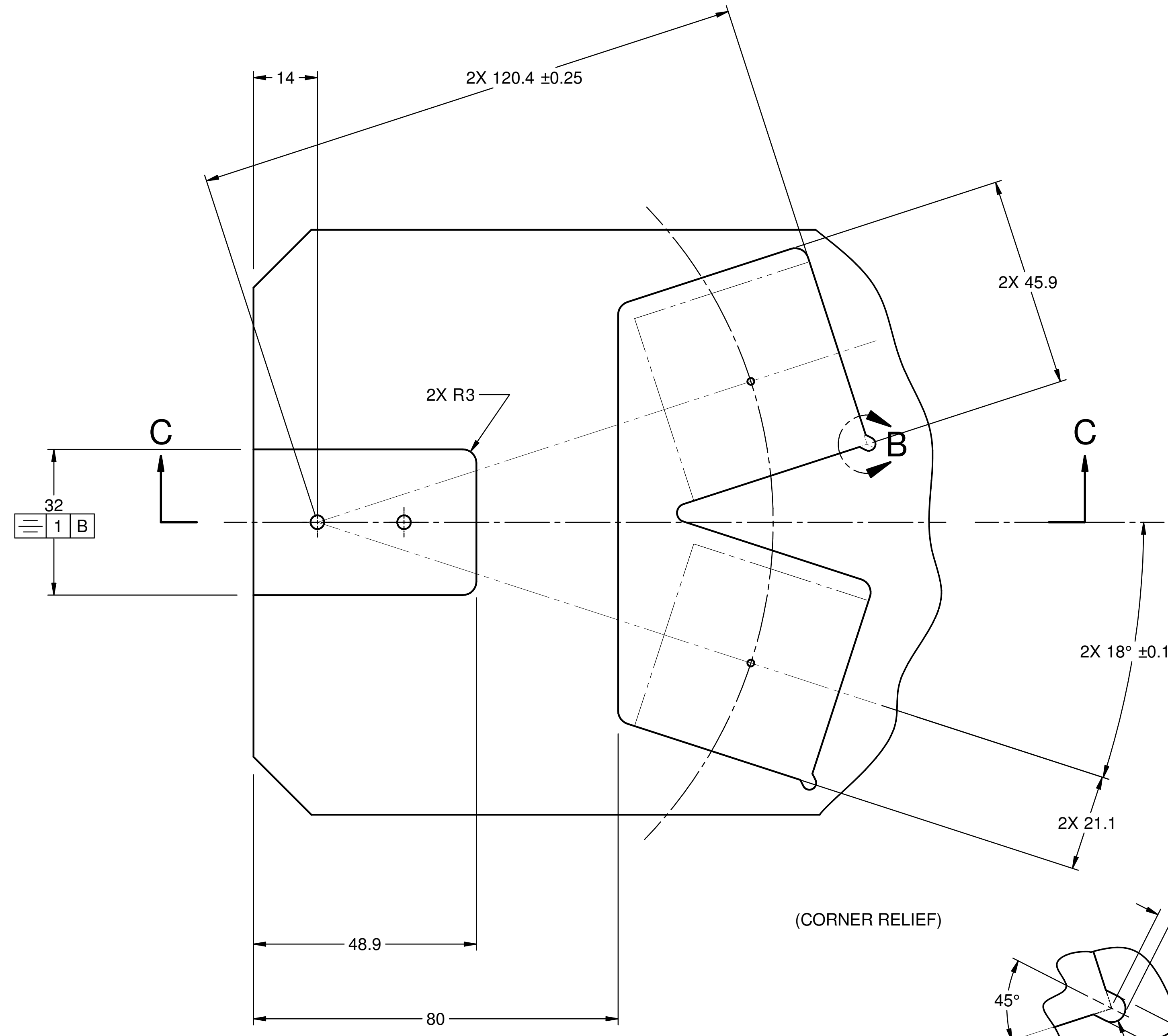
SECTION A-A



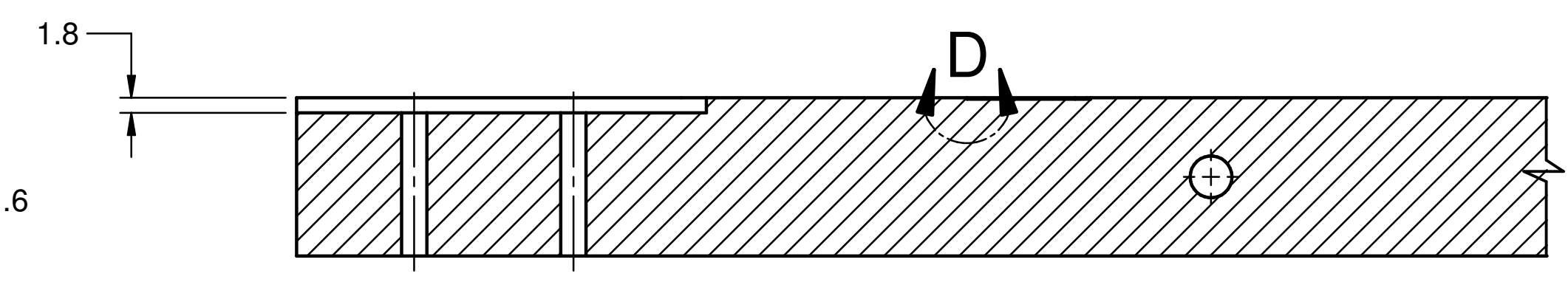
- NOTES (UNLESS OTHERWISE SPECIFIED):
- 1 APPLY PART NUMBER AND REVISION APPROX WHERE SHOWN.
  - 2 MATERIAL MAY BE SUBSTITUTED WITH AN EQUIVALENT FROM A DIFFERENT MANUFACTURER.

DIMENSIONING AND TOLERANCING IS IN ACCORDANCE WITH ASME Y14.5-2009	
UNLESS OTHERWISE SPECIFIED DIMENSIONS ARE IN MILLIMETERS	
TOLERANCES: BREAK EDGES 0.13 - 0.4 INTERNAL CORNERS R 0.4 MAX	
ANGLE ± 1° ALL SURF 0.80	
SA-256-102-67	
NEXT ASSEMBLIES:	
DIMENSIONS	< 6 ±0.1 > 6 ±0.2 > 30 ±0.3 > 120 ±0.5 > 315 ±0.8 > 1000 ±1.2 > 2000 ±2
GENERAL TOLERANCES	

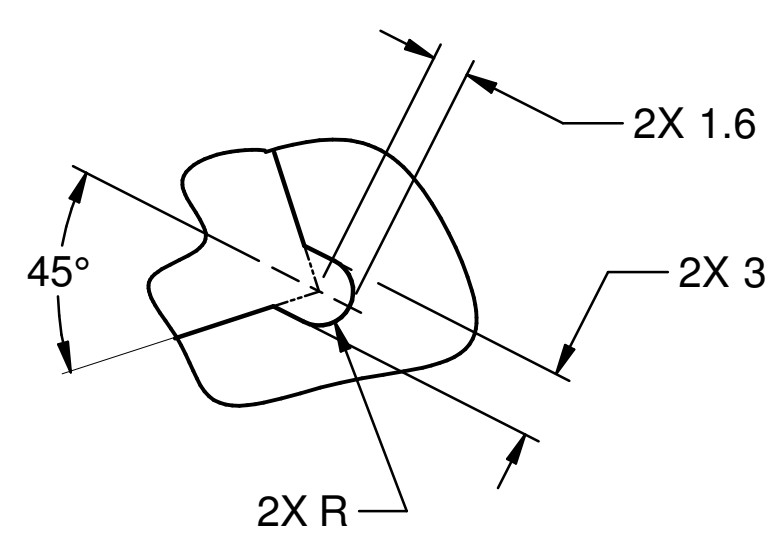
SCALE: 3:2 DO NOT SCALE DRAWING	ESTIMATED MASS: 1.66 kg	CAD FILE NAME: PF-256-102-70.dft
ATLAS INNER PIXEL MECH PICK UP PLATE ASSY QUAD PICK UP PLATE QUAD		
ENGR S. METCALFE DWN G. LLOYD CHKR O. FRENER	DATE 20190820	APPROVALS S. METCALFE
DRAWING NUMBER PF-256-102-70		REVISION NUMBER 00



DETAIL D  
SCALE 15:1



SECTION C-C  
SCALE 1.5:1



DETAIL B  
TYP 2 PLS  
SCALE 3:1

DETAIL B SH 2  
2X SENSOR POCKETS  
(SENSORS SHOWN IN PHANTOM)  
SCALE 1.5:1

(CORNER RELIEF)

DIMENSIONING AND TOLERANCING IS IN ACCORDANCE WITH ASME Y14.5-2009		SCALE: 3:2 DO NOT SCALE DRAWING	ESTIMATED MASS: 1.66 kg	CAD FILE NAME: PF-256-102-70.dft															
UNLESS OTHERWISE SPECIFIED DIMENSIONS ARE IN MILLIMETERS		 <b>U.S. DEPARTMENT OF ENERGY</b> NATIONAL ACCELERATOR LABORATORY	<b>ATLAS INNER PIXEL MECH PICK UP PLATE ASSY QUAD PICK UP PLATE QUAD</b>																
TOLERANCES: BREAK EDGES 0.13 - 0.4 INTERNAL CORNERS R 0.4 MAX ANGLE ± 1° ALL SURF 0.80																			
SA-256-102-67	<table border="1"> <tr> <td>DIMENSIONS</td> <td>&lt; 6</td> <td>&gt; 6</td> <td>&gt; 30</td> <td>&gt; 120</td> <td>&gt; 315</td> <td>&gt; 1000</td> <td>&gt; 2000</td> </tr> <tr> <td>GENERAL TOLERANCES</td> <td>± 0.1</td> <td>± 0.2</td> <td>± 0.3</td> <td>± 0.5</td> <td>± 0.8</td> <td>± 1.2</td> <td>± 2</td> </tr> </table>	DIMENSIONS	< 6	> 6	> 30	> 120	> 315	> 1000	> 2000	GENERAL TOLERANCES	± 0.1	± 0.2	± 0.3	± 0.5	± 0.8	± 1.2	± 2	ENGR S. METCALFE DWN G. LLOYD CHKR O. FRENER	DATE 20191016 APPROVALS S. METCALFE
DIMENSIONS	< 6	> 6	> 30	> 120	> 315	> 1000	> 2000												
GENERAL TOLERANCES	± 0.1	± 0.2	± 0.3	± 0.5	± 0.8	± 1.2	± 2												
NEXT ASSEMBLIES:			DRAWING NUMBER <b>PF-256-102-70</b>	REVISION NUMBER <b>00</b>															