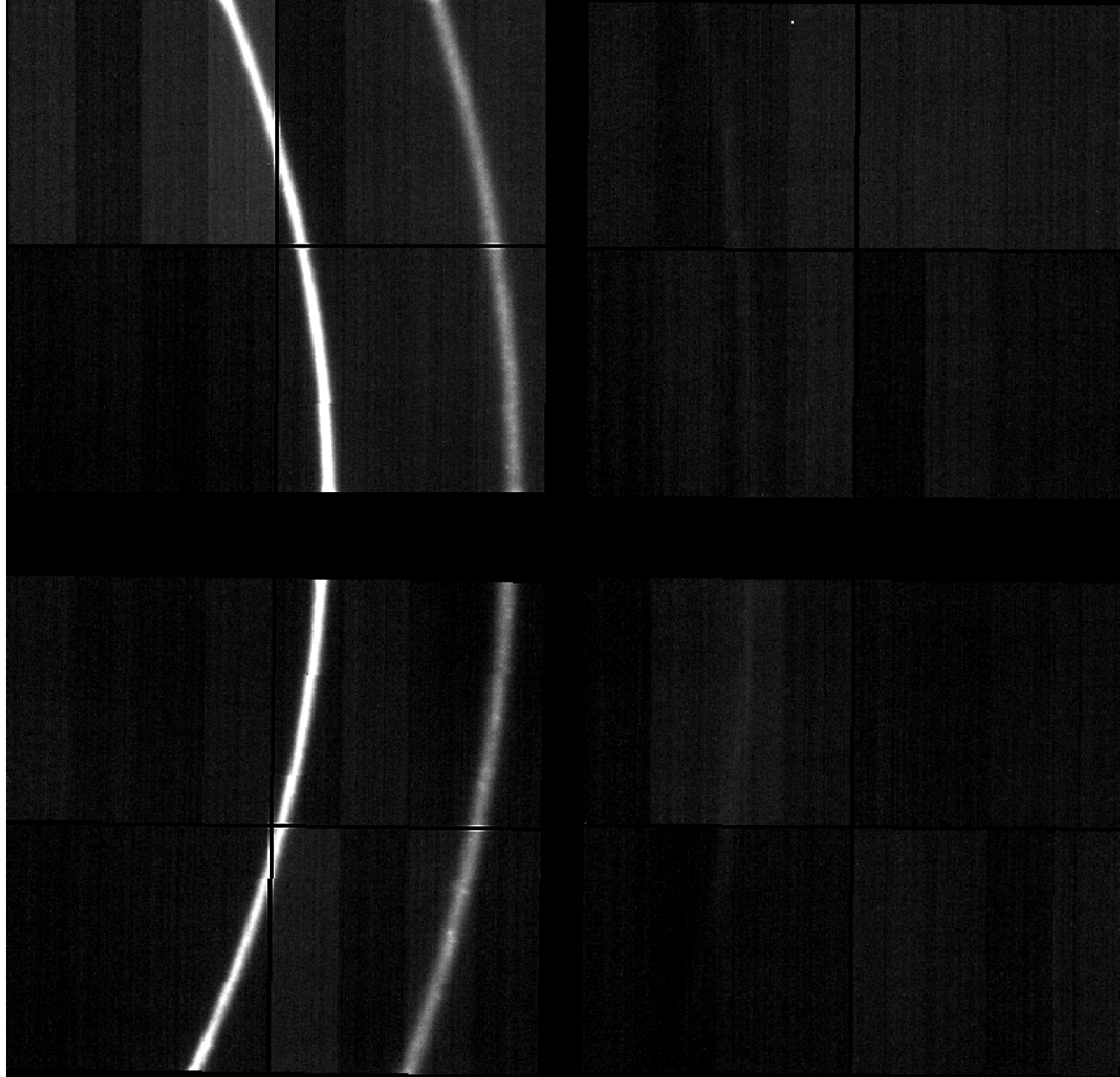


ePix10k Quad

Calibration with Au and LaB6

Au



Au

0 deg

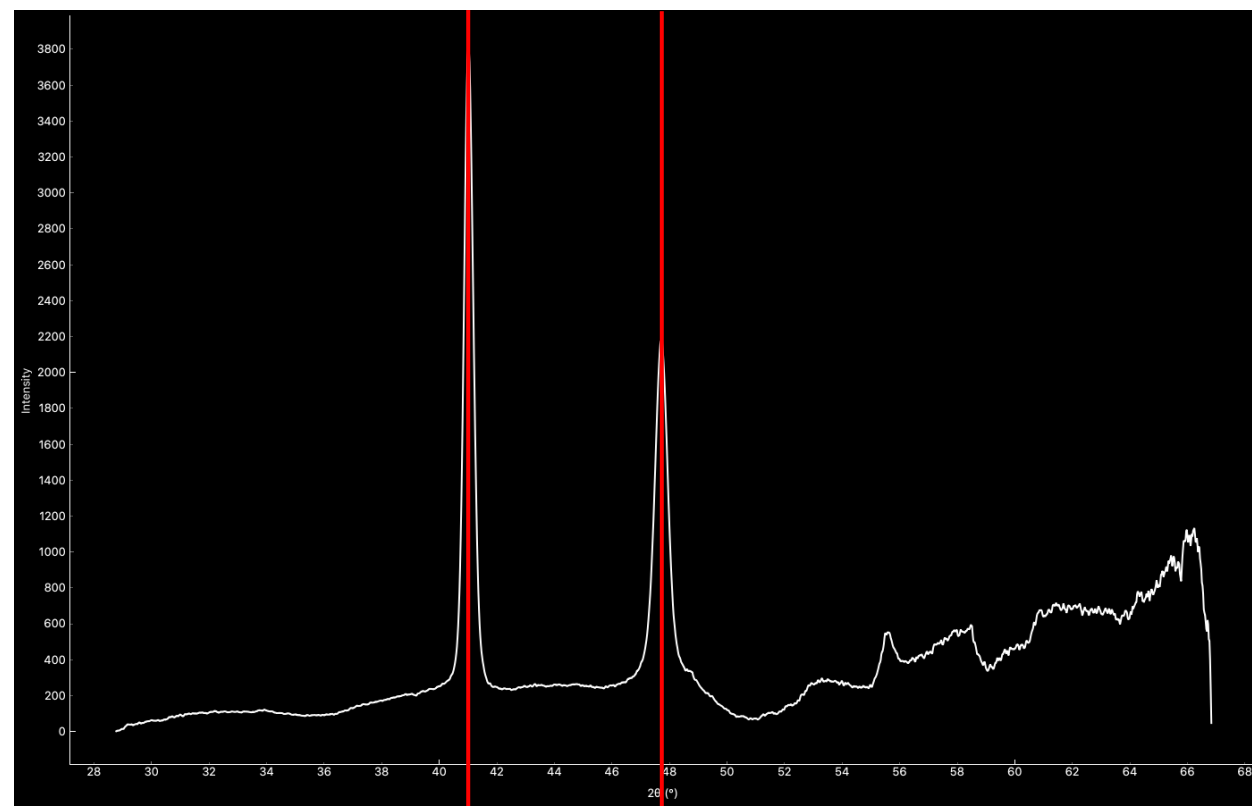
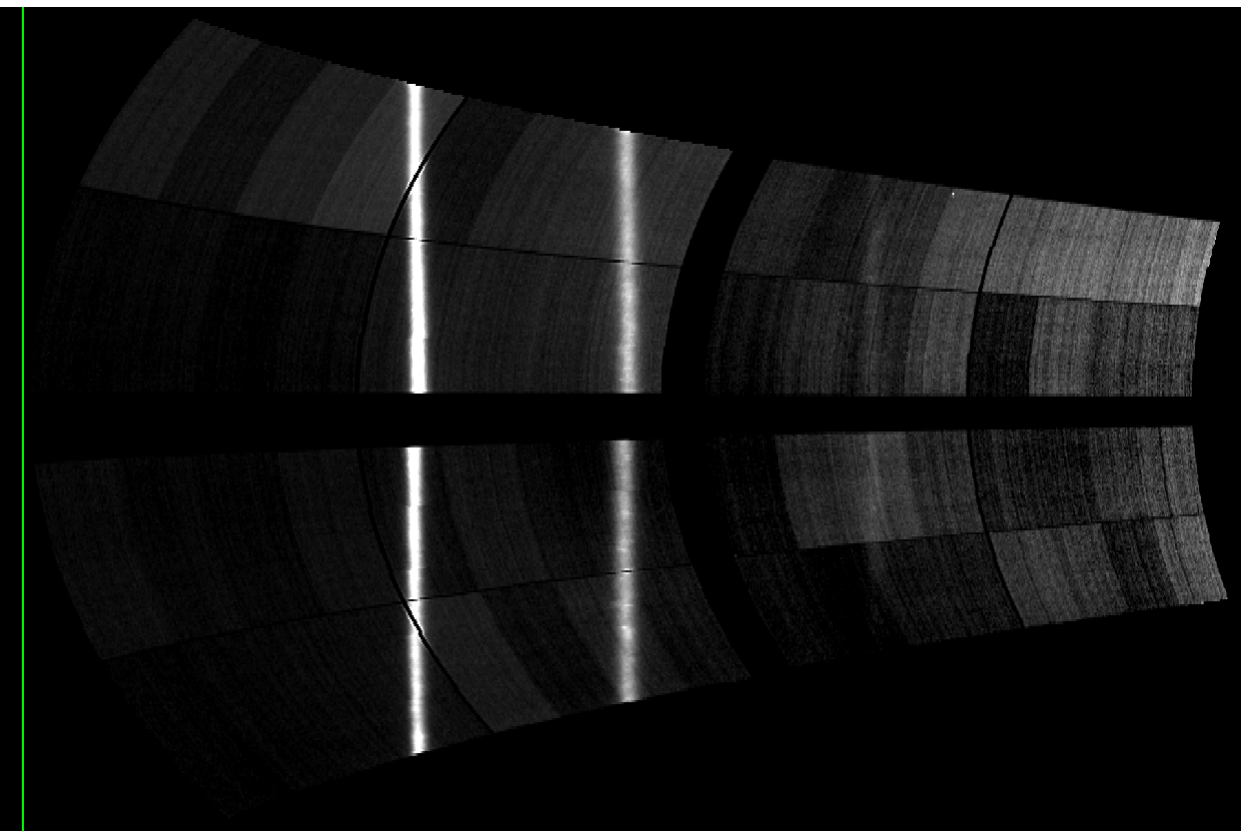
Distance:	119.1245	mm	<input checked="" type="checkbox"/>
Wavelength:	1.6500	Å	<input type="checkbox"/>
Polarization:	0.990		
Center X:	-568.714	px	}
Center Y:	417.146	px	
Rotation:	179.347222	deg	
Tilt:	27.767071	deg	
Pixel width:	100.0000	um	
Pixel height:	100.0000	um	

started iteration at 110 mm

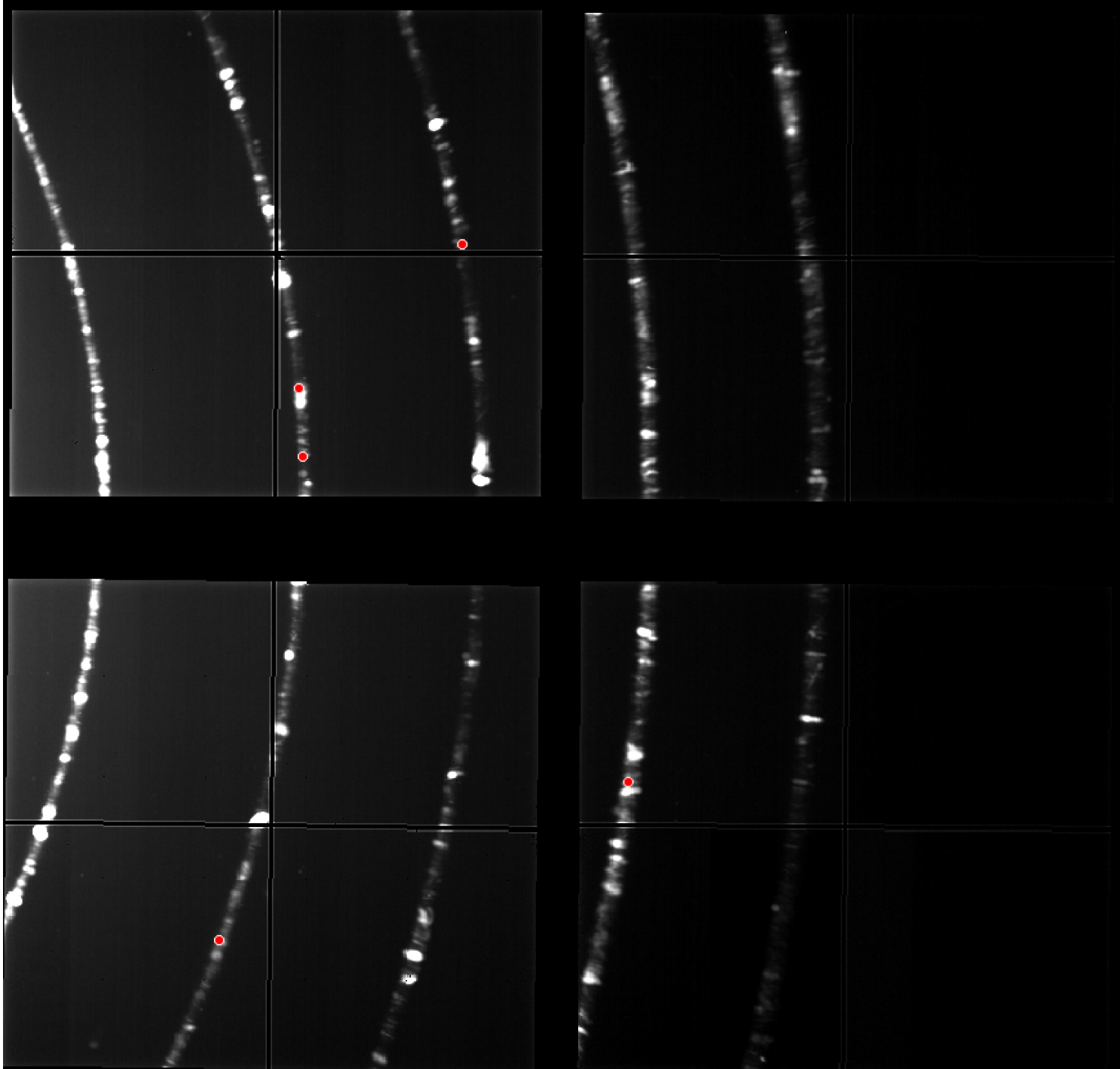
XFEL photon energy

calculated by Dioptas

red lines from database



LaB6



LaB6

0 deg

Distance:	<input type="text" value="119.1245"/>	mm	<input checked="" type="checkbox"/>
Wavelength:	<input type="text" value="1.6500"/>	Å	<input type="checkbox"/>
Polarization:	<input type="text" value="0.990"/>		
Center X:	<input type="text" value="-568.714"/>	px	
Center Y:	<input type="text" value="417.146"/>	px	
Rotation:	<input type="text" value="179.347222"/>	deg	
Tilt:	<input type="text" value="27.767071"/>	deg	
Pixel width:	<input type="text" value="100.0000"/>	um	
Pixel height:	<input type="text" value="100.0000"/>	um	

reusing the same values estimated with Au calibration

red lines from database

