

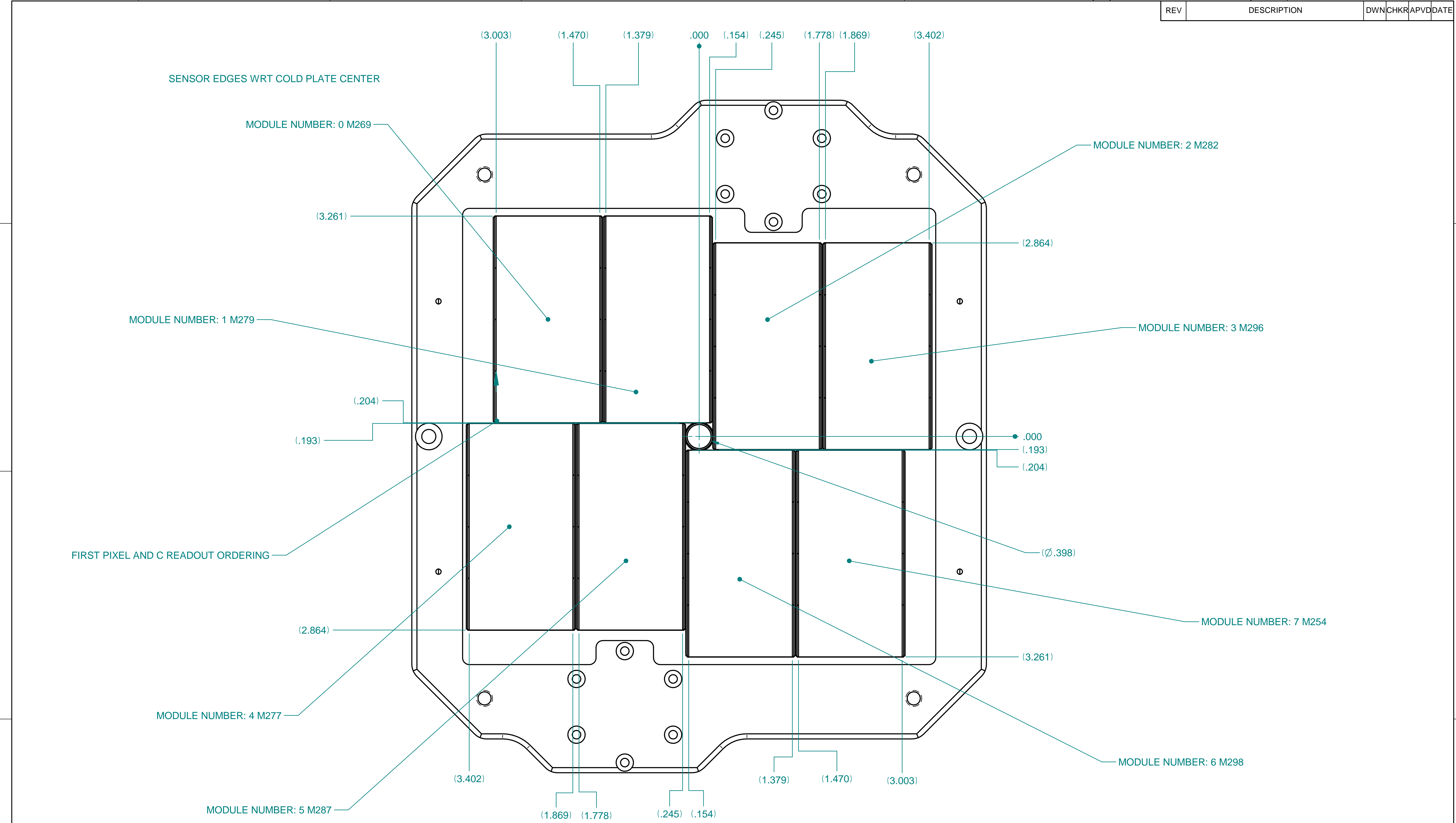
ITEM	PART NO	VENDOR PART NO	TITLE OR DESCRIPTION	QTY
15	SL110107-00069	SWAGelok COMPANY SS-400-1-4	ADAPTER, TUBE, MALE, 1/4 TUBE OD TO 1/4 NPT, SST	2
14	SL050101-20790	UCCOMPONENTS MC-612-SV	SCREW, CAP, HEX SCH, M6 X 12 mm, SST 304, SLOT VENTED	4
13	SL050101-20721	UCCOMPONENTS MC-2.512-SV	SCREW, CAP, HEX SCH, M2.5 X 12 mm, SST 304, SLOT VENT	48
12	SL050101-01755		SCREW, CAP, FLAT CSKH, M2 X 0.4 X 8 mm, SST 316	4
11	LIB-000001896	MCMaster-CARR 9464K380	O-RING, NOM ID 1.45IN, DASH SIZE 217, VITON RUBBER	2
9	SL050101-01786		SCREW, CAP, FLAT CSKH, M3 X 0.5 X 5 mm, STL CL 10.9, BLK OXIDE	4
8	SL050101-20739	UCCOMPONENTS MC-320-SV	SCREW, CAP, HEX SCH, M3 X 20 mm, SST 304, SLOT VENT	12
7	SL050101-22972	UCCOMPONENTS MC-520-SVA	SCREW, CAP, HEX SCH, M5 X 0.8 X 20 mm, SST 304, SIVER PLATE, SLOT VENT	2
6	LCL5004-007514		SENSOR PROTECTIVE COVER	1
5	DSG-000001225		SENSOR ASSY	8
4	LCL5004-007513		NOSE GUARD	1
3	LCL5004-007823		APERTURE TUBE 9MM	1
2	DSG-000001045		4M COLD PLATE	1
1	DSG-000000599		SUPPORT PLATE ASSY	1

NOTES: UNLESS OTHERWISE SPECIFIED

- 1 DO NOT HANDLE MODULES WITHOUT APPROPRIATE TOOLING.
- 2 SEE SENSOR ASSEMBLY INSTRUCTIONS (LCLS DETECTORS ENGINEERING NOTE No. JF30).
- 3 CLEAN HANDLING: ASSEMBLE USIN CLEAN ROOM METHODS INCLUDING GLOVES AND A CLEAN WORK SPACE TO MAINTAIN PART/ASSEMBLY CLEANLINES.
- 4 PROTECTIVE COVER FOR USE DURING ASSEMBLY AND TRANSPORT ONLY. REMOVE BEFORE OPERATING.

DIMENSIONING AND TOLERANCING IS IAW ASME Y14.5-2009		SCALE: 1:2 DO NOT SCALE DRAWING	ESTIMATED MASS: 20.256 LB	DWG TYPE: ASSY
UNLESS OTHERWISE SPECIFIED DIMENSIONS ARE IN INCHES. TOLERANCES: BREAK EDGES .005-.015 INTERNAL CORNERS R.015 MAX FRACTIONS ± --- DEC .XX± --- .XXX± --- .XXXX± --- ANGLE ± --- ALL SURF ✓				
LCL5004-007859		THE DRAWINGS, SPECIFICATIONS AND OTHER DATA HEREIN PROVIDED SHALL NOT BE COPIED, PUBLISHED OR OTHERWISE FURTHER DISSEMINATED WITHOUT PRIOR WRITTEN PERMISSION OF STANFORD UNIVERSITY/SLAC		
NEXT ASSEMBLIES:		E: R. ARMENTA DATE: 2/20/2012 D: R. ARMENTA C: MCKELVEY		
		LCLS DETECTORS JUNGFRAU 4M AIRBOX 4M COLD PLATE ASSY		
		DRAWING NUMBER: LCL5004-007815		REVISION NUMBER: 00
				D

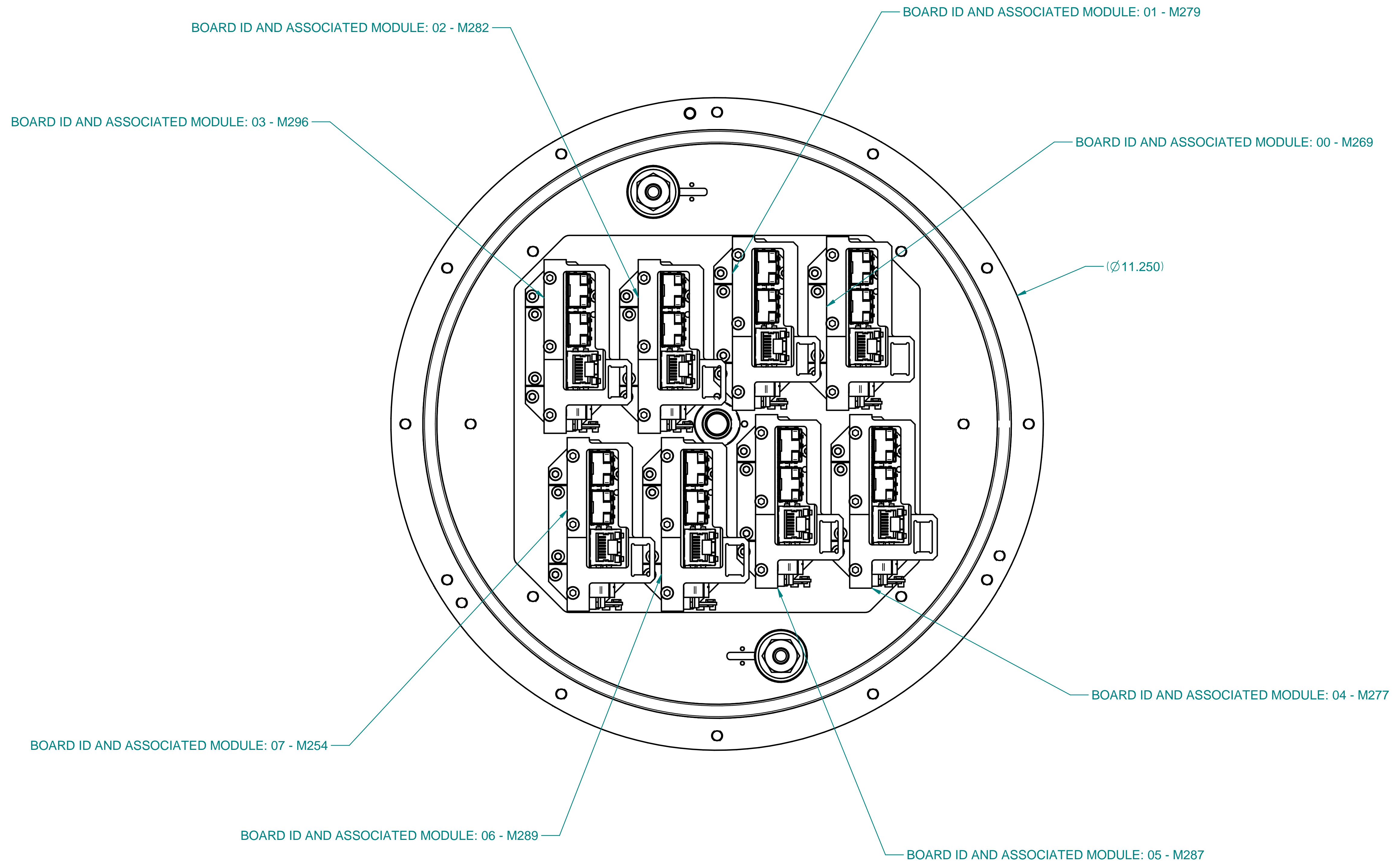
D
C
B
A





---	DIMENSIONING AND TOLERANCING IS IAW ASME Y14.5-2009	SCALE: 1:2 DO NOT SCALE DRAWING	ESTIMATED MASS: 20.256 LB	DWG TYPE: ASSY
---	UNLESS OTHERWISE SPECIFIED DIMENSIONS ARE IN INCHES.	U.S. DEPARTMENT OF ENERGY NATIONAL ACCELERATOR LABORATORY	LCLS DETECTORS JUNGFRAU 4M AIRBOX 4M COLD PLATE ASSY	
---	TOLERANCES: BREAK EDGES .005-.015 INTERNAL CORNERS R.015 MAX FRACTIONS ± --- DEC .XX± --- .XXX± --- .XXXX± --- ANGLE ± ---			
---	LCL5004-007859			
---	NEXT ASSEMBLIES:	ENGR R. ARMENTA DWN R. ARMENTA DATE 20200110	ENGR M. MCKELVEY DWN M. MCKELVEY DATE 20200110	ENGR S. BOUTET DWN S. BOUTET DATE 20200110
---			DRAWING NUMBER LCL5004-007815	REVISION NUMBER 00
---				D

CAD FILE NAME: LCL5004-007815.dft

D	00	LCL5004-007815	1		
REV	DESCRIPTION	DWN	CHKR	APVD	DATE



---	DIMENSIONING AND TOLERANCING IS IAW ASME Y14.5-2009	SCALE: 1:2 DO NOT SCALE DRAWING	ESTIMATED MASS: 20.256 LB	DWG TYPE: ASSY
---	UNLESS OTHERWISE SPECIFIED DIMENSIONS ARE IN INCHES.	 	LCLS DETECTORS JUNGFRAU 4M AIRBOX 4M COLD PLATE ASSY	
---	TOLERANCES: BREAK EDGES .005-.015 INTERNAL CORNERS R.015 MAX FRACTIONS ± --- DEC .XX± --- .XXX± --- .XXX± --- ANGLE ± ---			
LCL5004-007859	NEXT ASSEMBLIES:	<small>DATE</small> <small>APPROVALS</small> <small>DATE</small>	<small>DATE</small> <small>APPROVALS</small>	<small>REVISION NUMBER</small> 00
		<small>DATE</small> <small>APPROVALS</small>	<small>DATE</small> <small>APPROVALS</small>	<small>REVISION NUMBER</small> 00

DRAWING NUMBER: **LCL5004-007815**

REVISION NUMBER: **00**

ALL SURF ✓

CAD FILE NAME: LCL5004-007815.dft

3 OF 3
3 SH