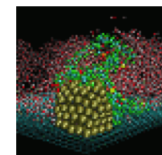
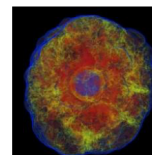
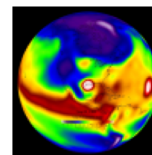
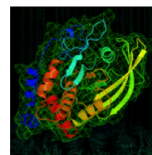
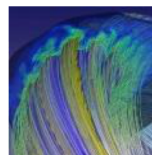
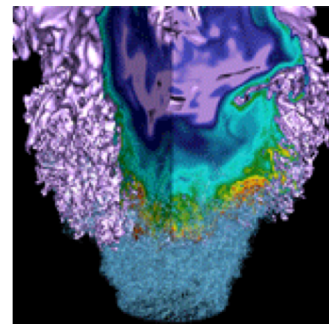


# Introducing Iris



**Debbie Bard**

Group Lead, Data Science Engagement  
NERSC

SLAC Unix Town Hall, 14<sup>th</sup> Nov 2019

# What is Iris?



## Four Areas of Functionality:



## Four Stakeholders:

### Users

- Manage account details, password, tokens
- Monitor compute/storage usage

### Principal Investigators (PIs)

- Manage projects, produce reports

### DOE Allocation Managers

- View roll-ups by program/office

### NERSC Staff

# What do we need from Iris?



*“Avoid building dependencies on dated, homegrown infrastructure”*

- Designed in the current century! ;-)
- Easier to navigate, faster
- Responsive: works on phones, tablets
- Daily usage summary
- Job-level accounting
- Click to drill down on Projects, Users, Hours totals
- Click column headings to sort
- Easy to maintain, easy to understand, adaptable and flexible



# Under the hood: IAM

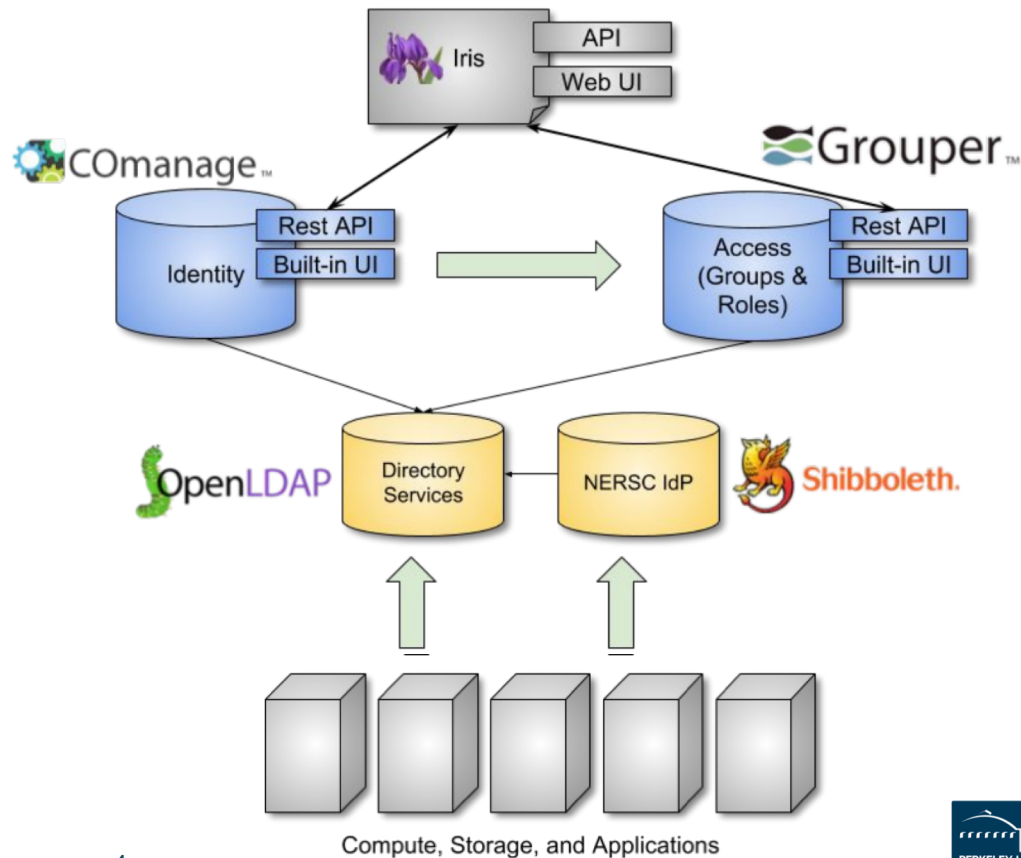


Based on InCommon  
Trusted Access Platform

Designed for Academic and  
Research Collaborations

Active user communities

Consulting and commercial  
support options



# Under the hood: accounting

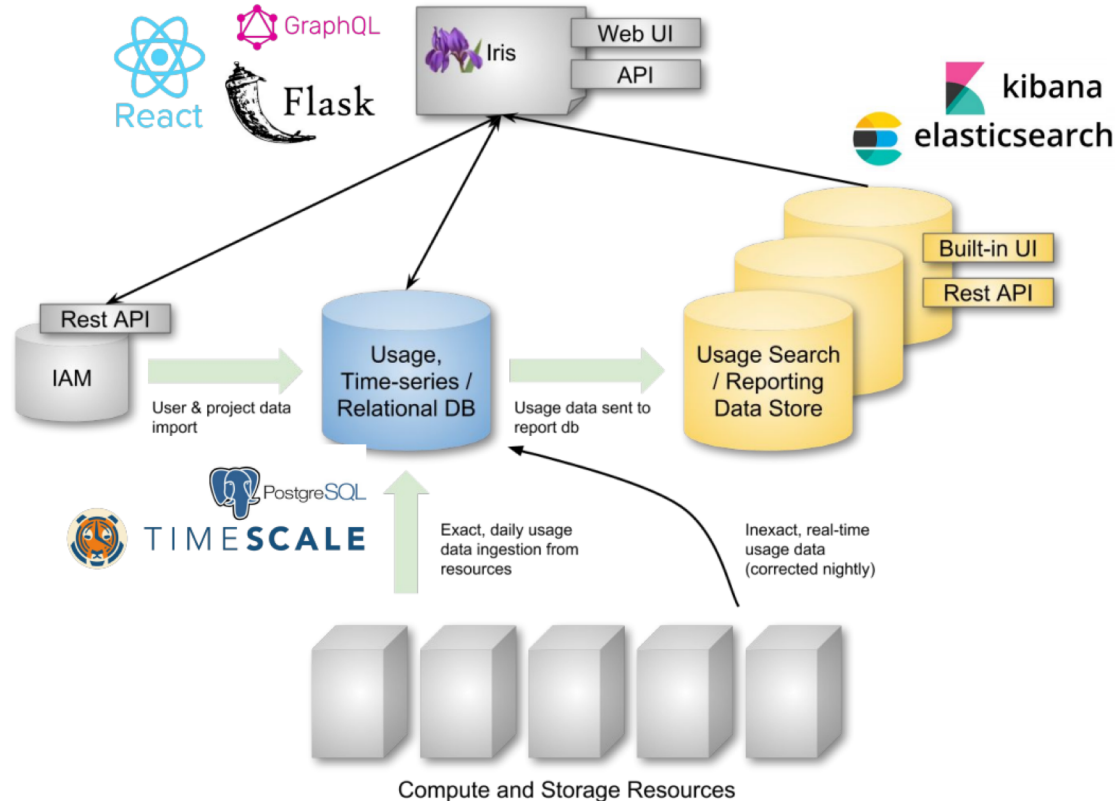


## Modular design includes

- Modern UI, API Tools
- Time-series Database
- Elastic Backend
- Containerized deployment

System components are scalable and performant

Active user communities



## **This will collect raw data instead of aggregated results:**

- Users can see how much each job cost
- Near real-time accounting (vs. next-day reports, today)
- Quick and easy visualizations of how compute time has been spent (this is not possible today)
- Custom DOE PM dashboard and visualizations
- Ability to get refunds for individual failed jobs
- Consistent, fast performance

- ✓ 2018 Q3: Kick-off, Requirements gathering
- ✓ 2018 Q4: Technology selection, Prototyping
- ✓ 2019 Q1: Pilot System Development
- ✓ 2019 Q2: Design Review with ALCF, OLCF, LIGO
- ✓ 2019 Q3: Feature completeness, Parallel operation
- 2019 Q4: Testing and cutover planning
- 2020 Q1: Launch

Accounting data is live and accurate

- Read-only: changes are reset nightly
- Features and navigation are still in flux



**Thank You**