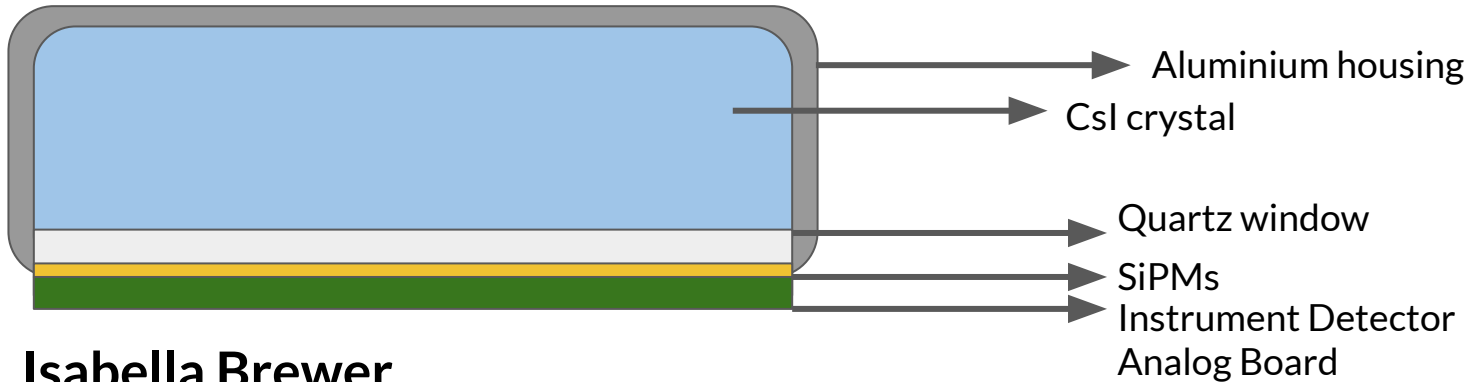
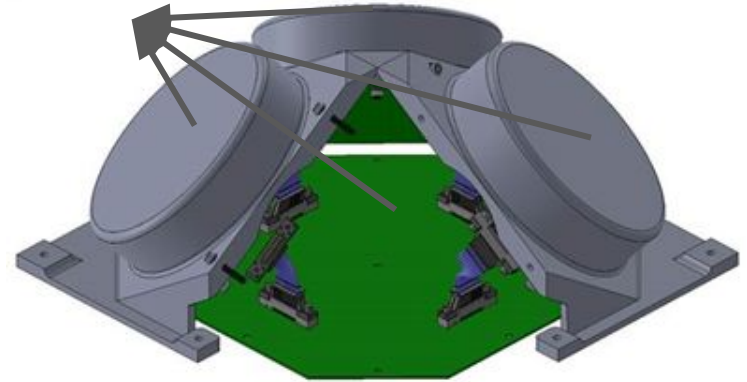


SiPM!

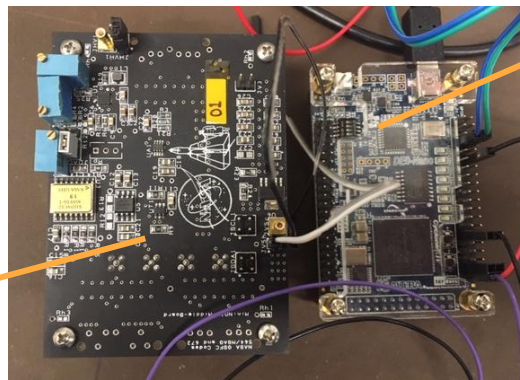
Four CsI scintillators  
tilted at angles with  
silicon photomultipliers  
(SiPMs).

CsI crystals in Al housing (fourth  
crystal not depicted).



**Isabella Brewer**  
Undergraduate at the University of Maryland

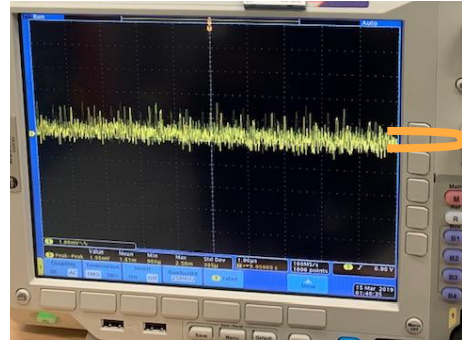
FPGA



Microprocessor



Peak to peak



Bias Voltage Supplies

Ripple

