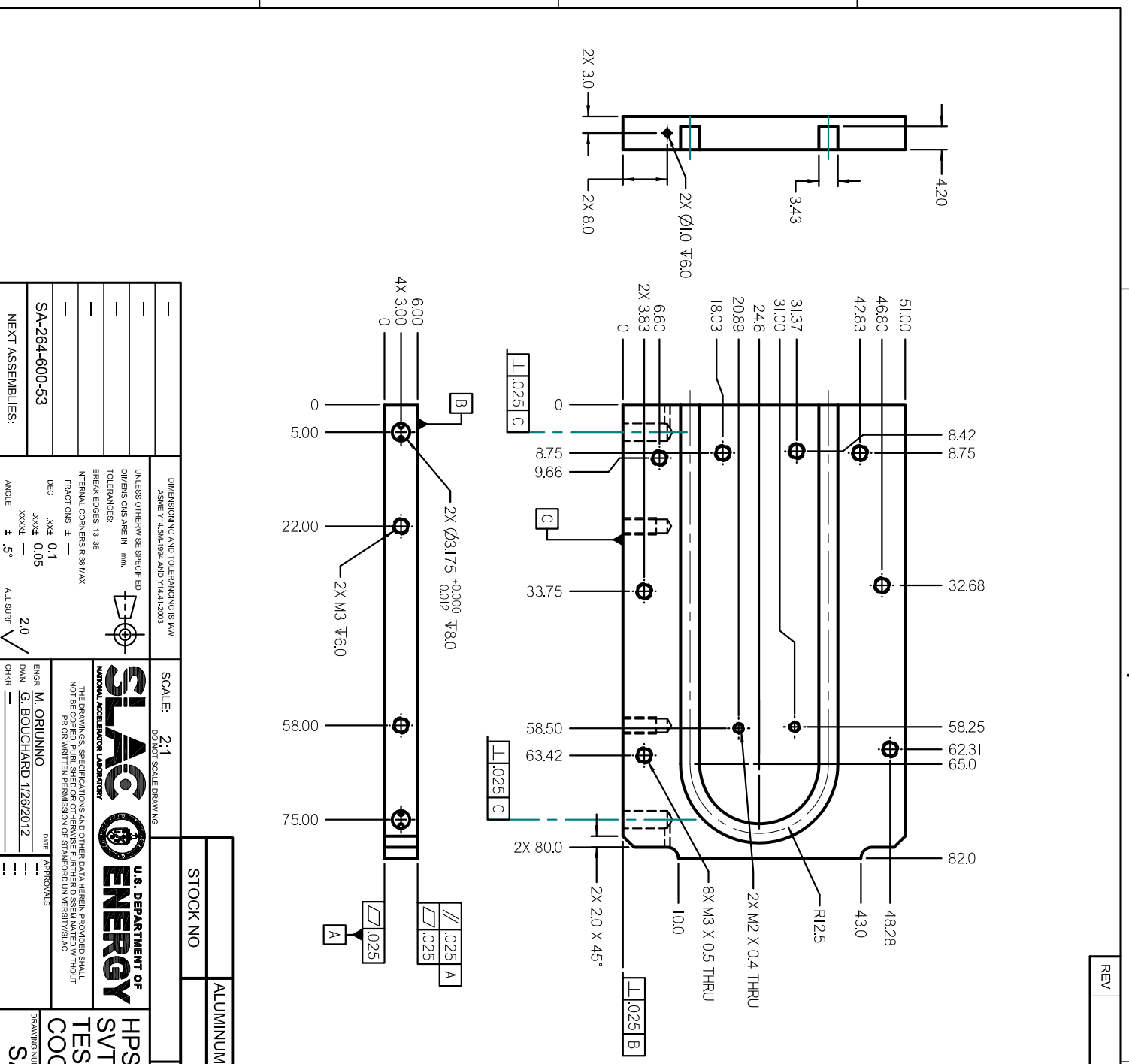


| REV | DESCRIPTION | DWN | CHKR | APPV | DATE |
|-----|-------------|-----|------|------|------|
| | | | | | |

**ULTRA HIGH
VAC PART
FABRICATE PER
FP-202-631-14**



| | |
|---|--|
| UNLESS OTHERWISE SPECIFIED DIMENSIONS ARE IN mm. | |
| TOLERANCES: | |
| BREAK EDGES: 1:3-38 | |
| INTERNAL CORNERS R3.8 MAX | |
| FRACTIONS: 1/16 | |
| DEC: 0.1 | |
| XXX 0.05 | |
| XXXX 1 | |
| ANGLE: ± 5° | |
| ALL SURF: 2.0 | |

DIMENSIONING AND TOLERANCING IS IN
 ACCORDANCE WITH ASME Y14.5M-1994 AND Y14.5-2003
 UNLESS OTHERWISE SPECIFIED
 DIMENSIONS ARE IN mm.
 TOLERANCES:
 BREAK EDGES: 1:3-38
 INTERNAL CORNERS R3.8 MAX
 FRACTIONS: 1/16
 DEC: 0.1
 XXX 0.05
 XXXX 1
 ANGLE: ± 5°
 ALL SURF: 2.0

SLAC NUCLEAR ACCCELERATOR LABORATORY
U.S. DEPARTMENT OF ENERGY
 THE DRAWINGS, SPECIFICATIONS AND OTHER DATA HEREIN PROVIDED SHALL NOT BE COPIED, PUBLISHED OR OTHERWISE FURTHER DISSEMINATED WITHOUT THE WRITTEN PERMISSION OF STANFORD UNIVERSITY/SLAC
 ENGR: M. ORLUNNO
 DWN: G. BOUCHARD 1/26/2012
 DATE: APPROVALS:

| | |
|----------------------|------------------------|
| STOCK NO | ALUMINUM ALLOY 7075-T6 |
| MATERIAL DESCRIPTION | ALUMINUM ALLOY 7075-T6 |
| CAD FILE NAME: | p126460020-0.dft |
| DRAWING NUMBER | SA-264-600-20 |
| REVISION NUMBER | 0 |
| SH | 1 OF 1 |