

Tiaan
Bezuidenhout

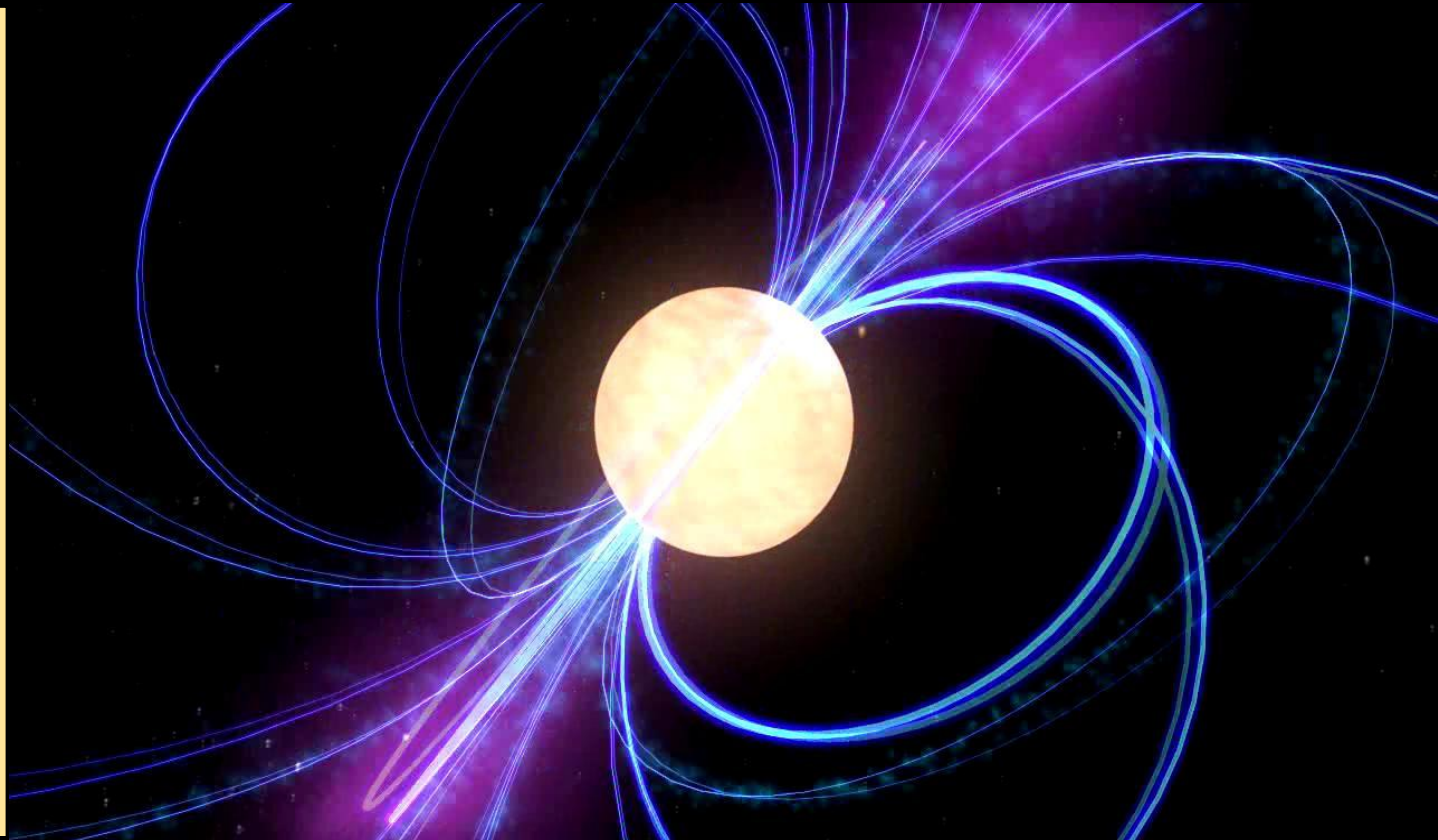
North-West University
South Africa



NORTH-WEST UNIVERSITY
YUNIBESITHI YA BOKONE-BOPHIRIMA
NOORDWES-UNIVERSITEIT

Supervisors:
Prof. Christo Venter (NWU)
Dr. Alice Harding (Goddard)

***DUAL
BAND
PULSAR
LIGHT
CURVE
FITTING***



Tiaan
Bezuidenhout

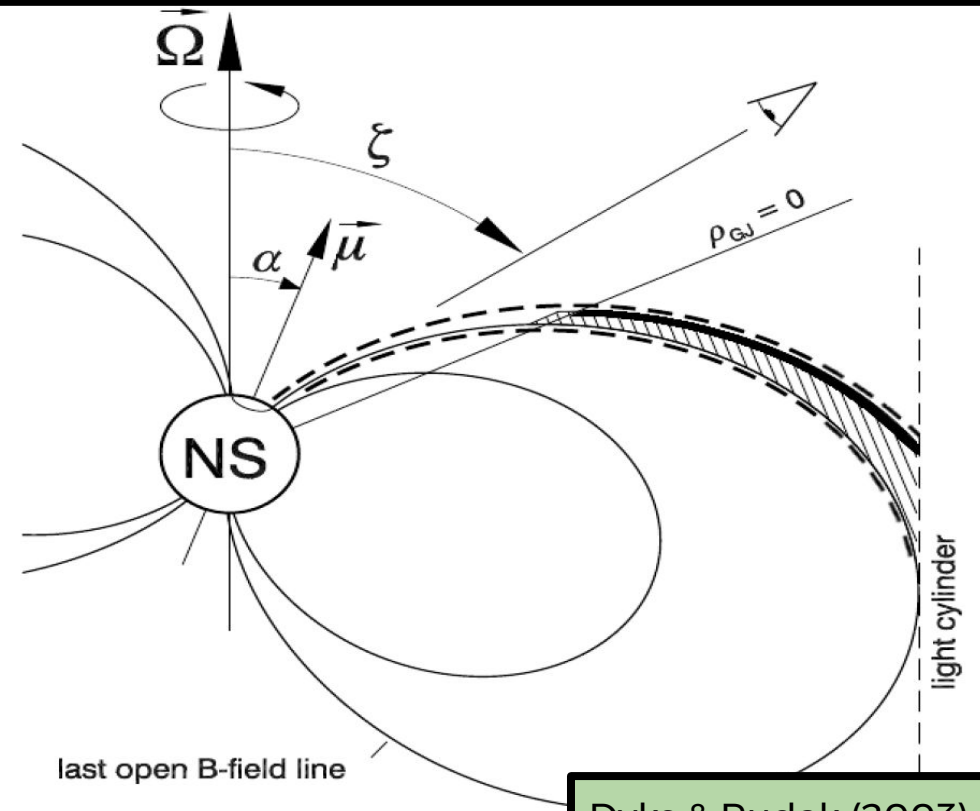
North-West University
South Africa



Supervisors:
Prof. Christo Venter (NWU)
Dr. Alice Harding (Goddard)

Geometric
 γ -ray
model

**DUAL
BAND
PULSAR
LIGHT
CURVE
FITTING**

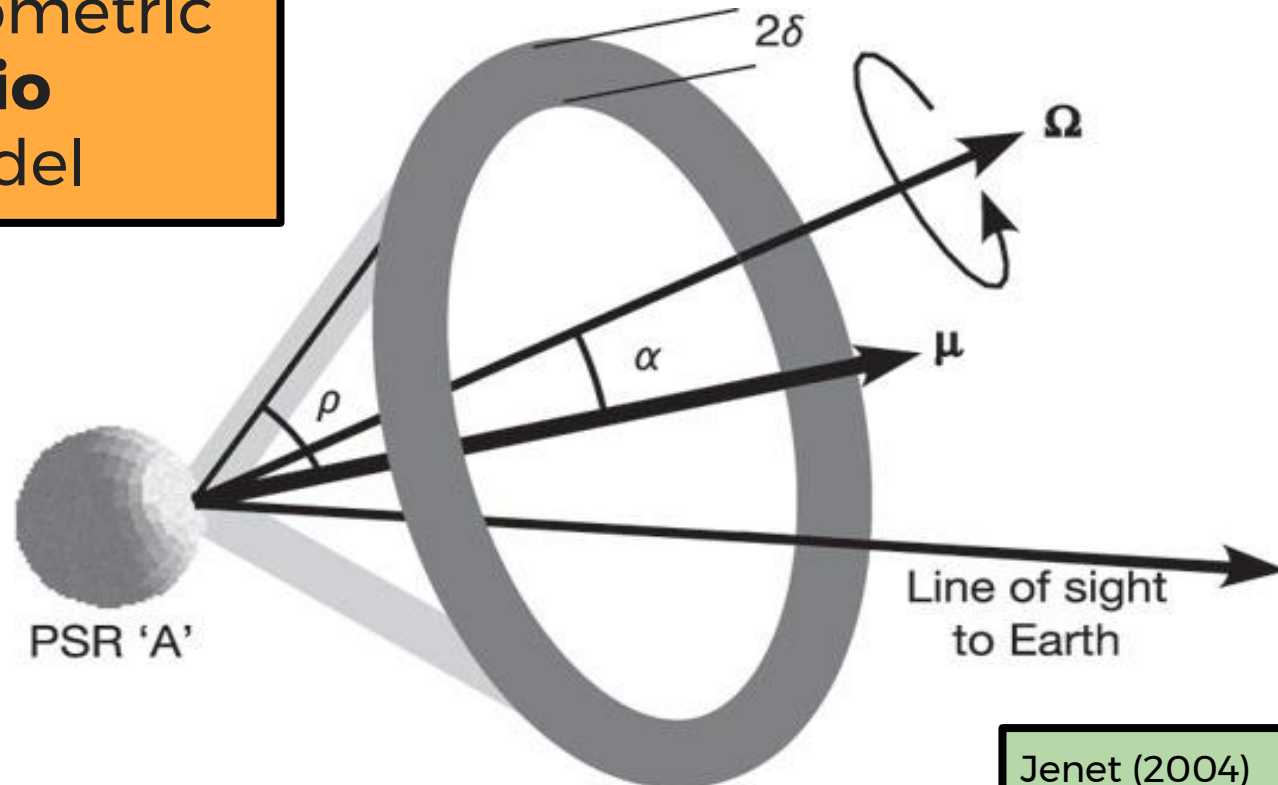


Dyks & Rudak (2003)

Supervisors:
Prof. Christo Venter (NWU)
Dr. Alice Harding (Goddard)

Geometric
radio
model

**DUAL
BAND
PULSAR
LIGHT
CURVE
FITTING**



Tiaan Bezuidenhout

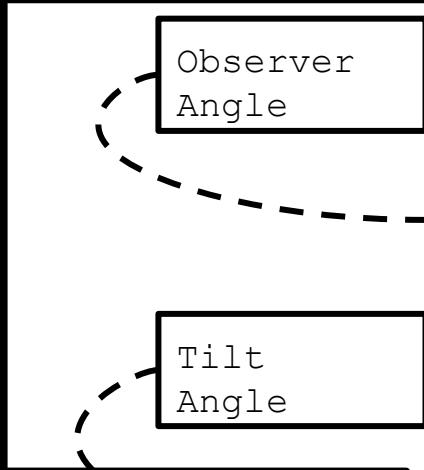
North-West University South Africa



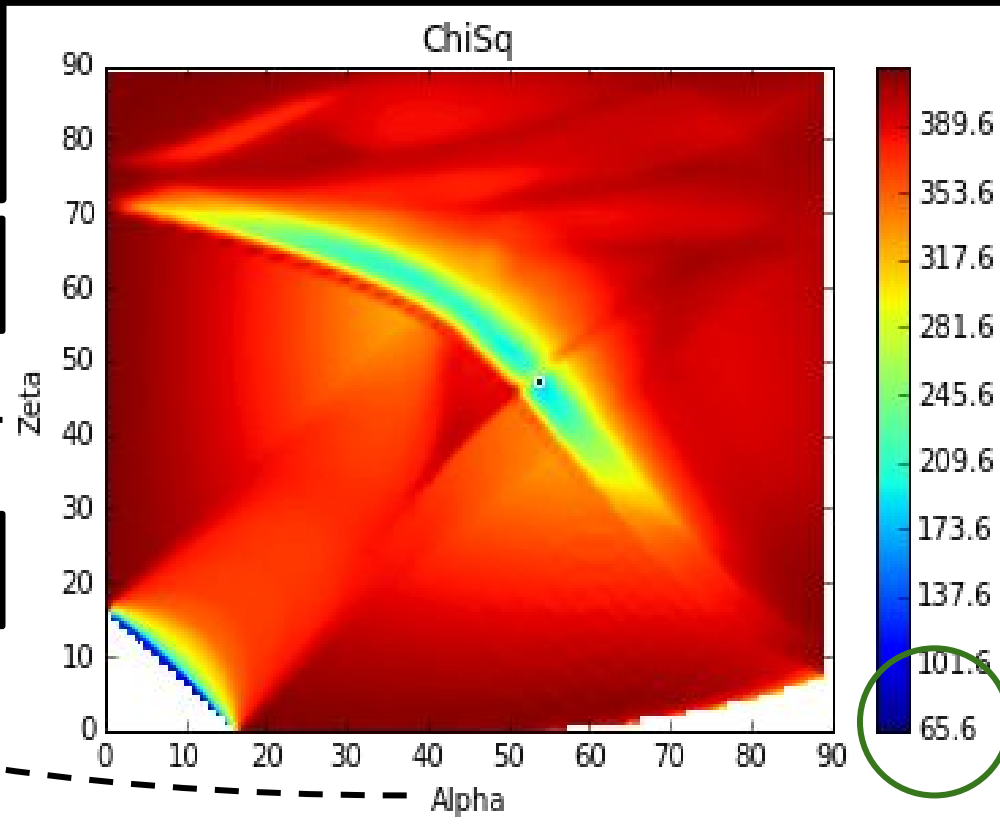
Supervisors:
Prof. Christo Venter (NWU)
Dr. Alice Harding (Goddard)

**DUAL
BAND
PULSAR
LIGHT
CURVE
FITTING**

Gamma-ray
 χ^2 map.



PSR
J0437-4715



Tiaan Bezuidenhout

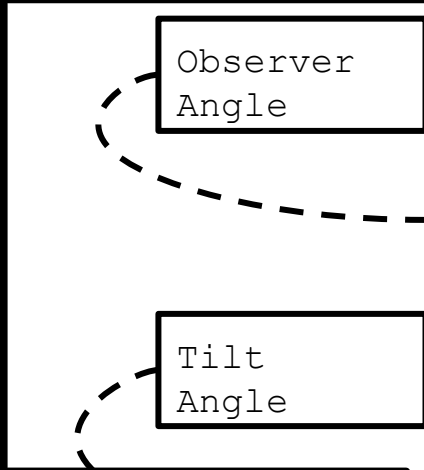
North-West University South Africa



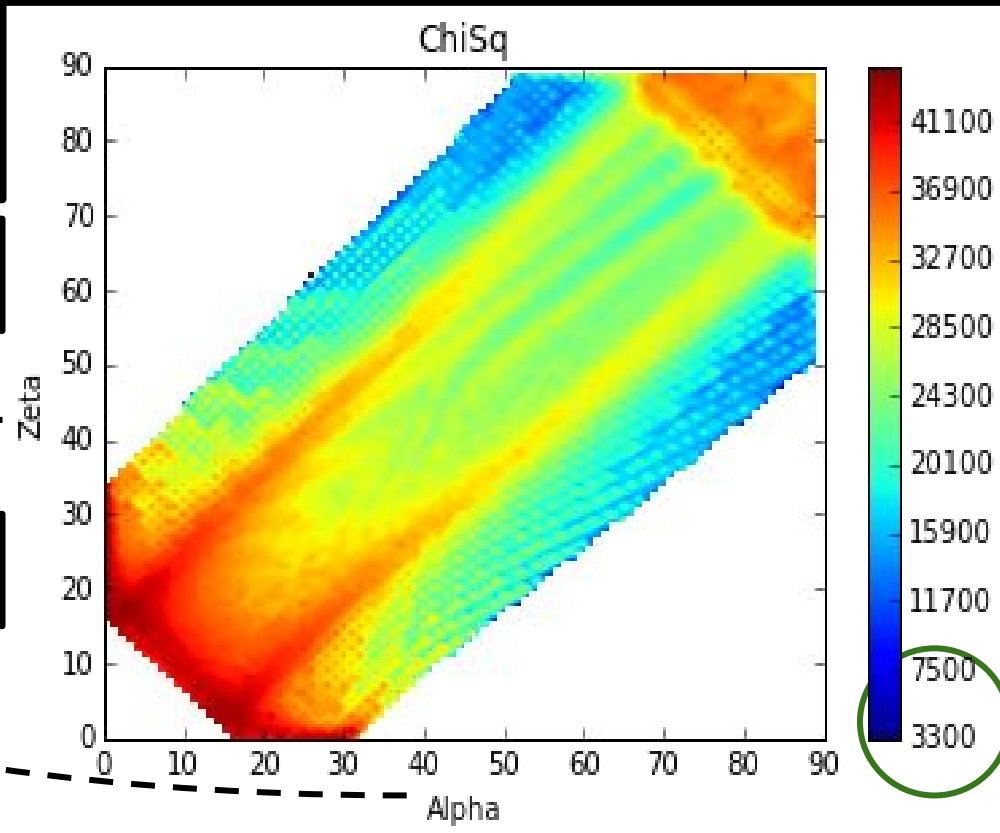
Supervisors:
Prof. Christo Venter (NWU)
Dr. Alice Harding (Goddard)

**DUAL
BAND
PULSAR
LIGHT
CURVE
FITTING**

Radio
 χ^2 map.



PSR
J0437-4715



Tiaan Bezuidenhout

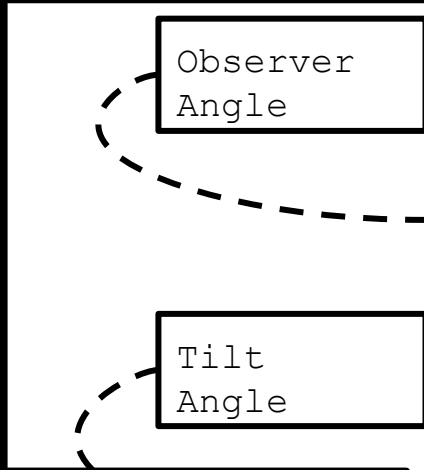
North-West University South Africa



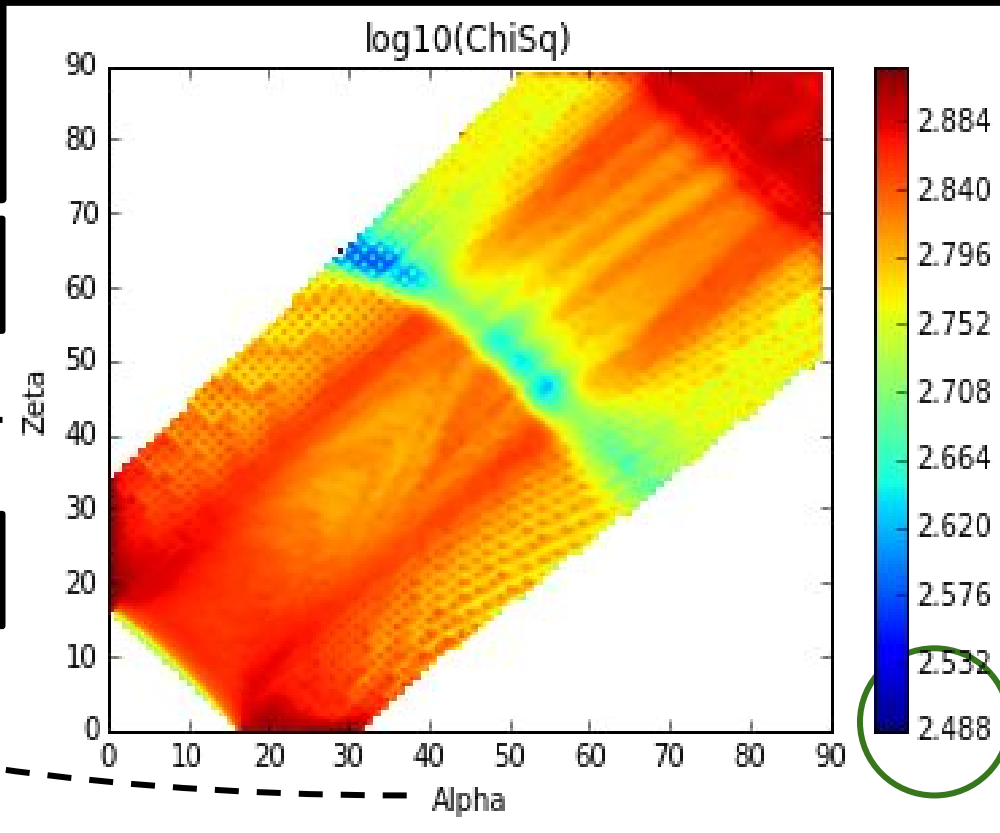
Supervisors:
Prof. Christo Venter (NWU)
Dr. Alice Harding (Goddard)

**DUAL
BAND
PULSAR
LIGHT
CURVE
FITTING**

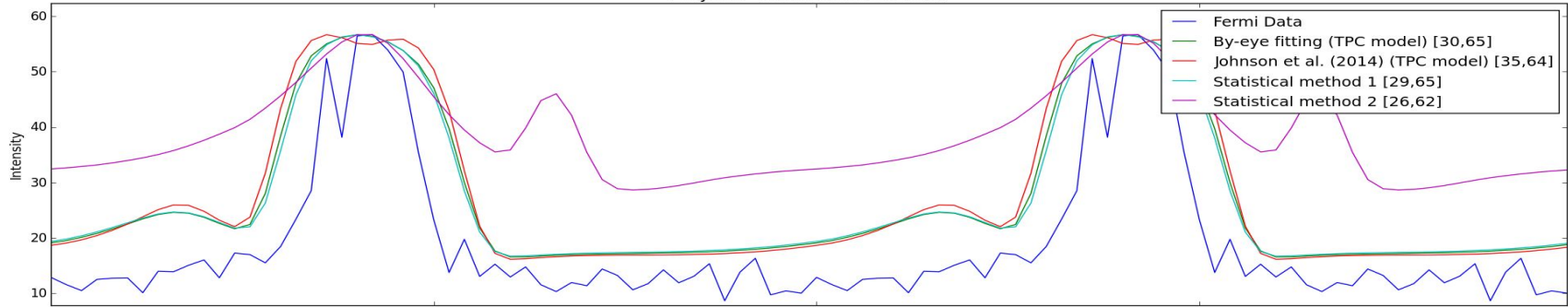
Radio
 χ^2 map.



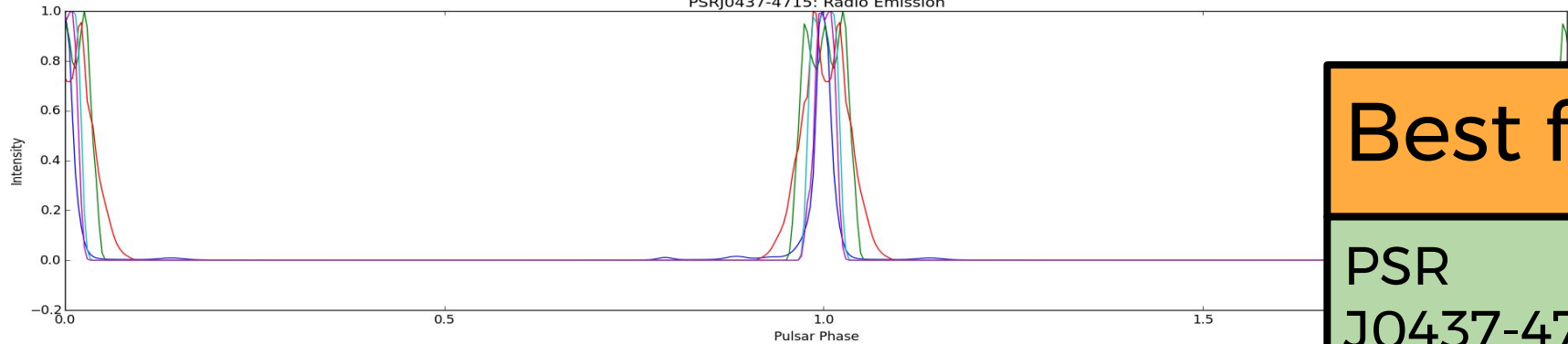
PSR
J0437-4715



PSRJ0437-4715: Gamma Emission



PSRJ0437-4715: Radio Emission



Best fits

PSR
J0437-4715

Tiaan
Bezuidenhout

North-West University
South Africa



Thank You

Baie Dankie