

CS-PAD Pixel Pitch

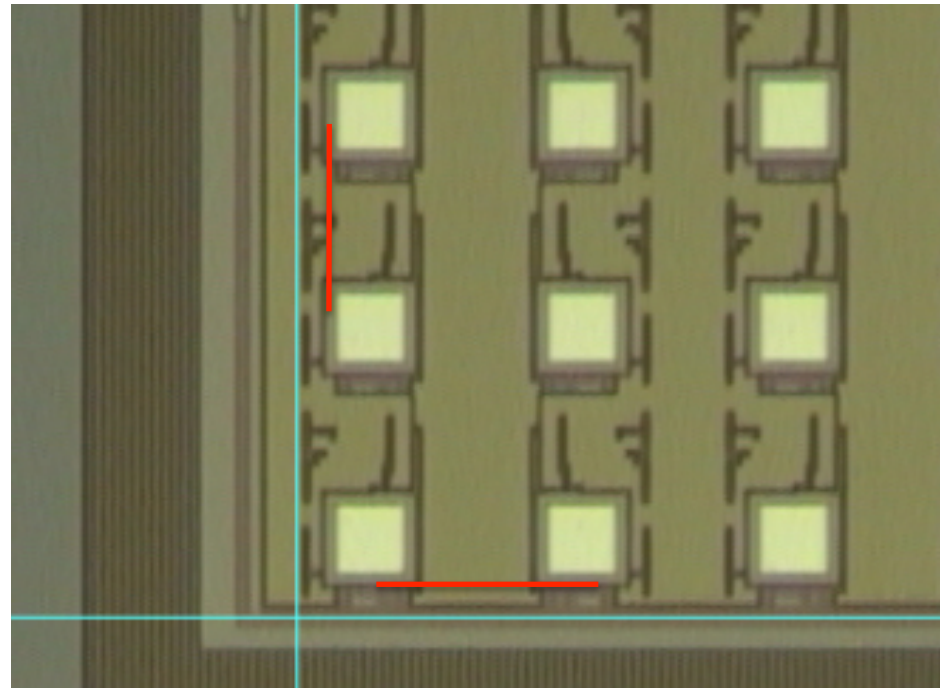
In the design files the ASIC and sensor pitches are not 110.0 microns

The designed pitch is 109.92 microns

Measurements on the wafers confirm both pixel pitches are 109.92 microns within a few nanometers

This is a cumulative effect so the difference across an ASIC is about 16 microns

Separation between Red and Blue lines indicates cumulative difference between 110.00 μm and 109.92 μm pitch across an ASIC.



Inter-ASIC Pixel Pitch

Elongated pixels in the center of a sensor are designed to span the gap between the pair of ASICs.

These two columns of pixels are 109.92 μm by 274.8 μm in area.

