



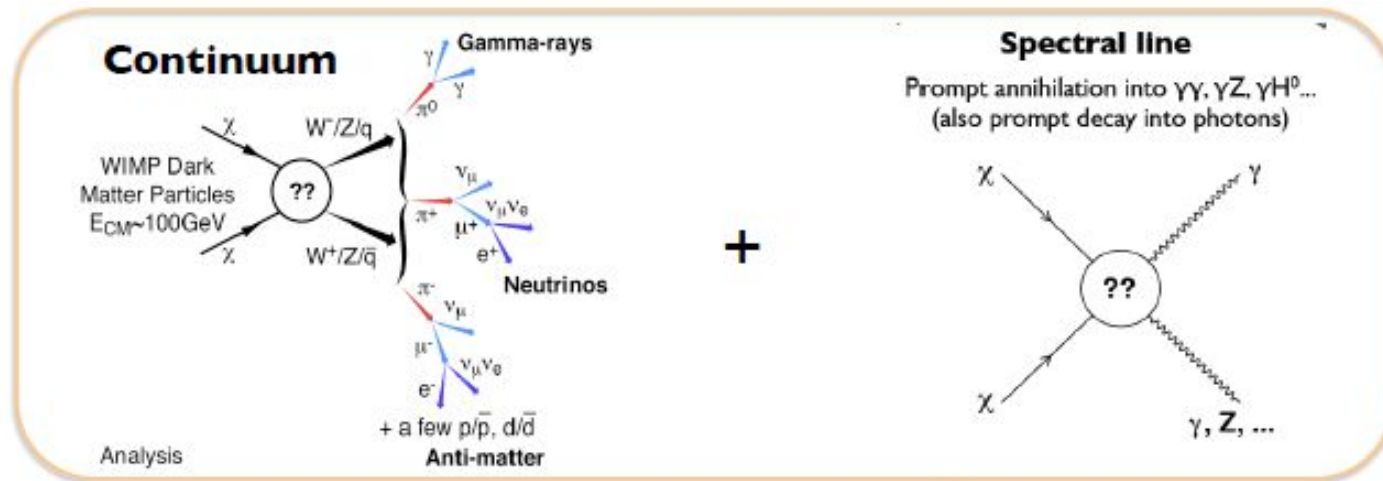
Search for Dark Matter Signal from Galaxy Clusters

Liang Yunfeng

advisor: Fan Yizhong

Purple Mountain Observatory
Key Laboratory of Dark Matter & Space Astronomy

Dark Matter Indirect Detection



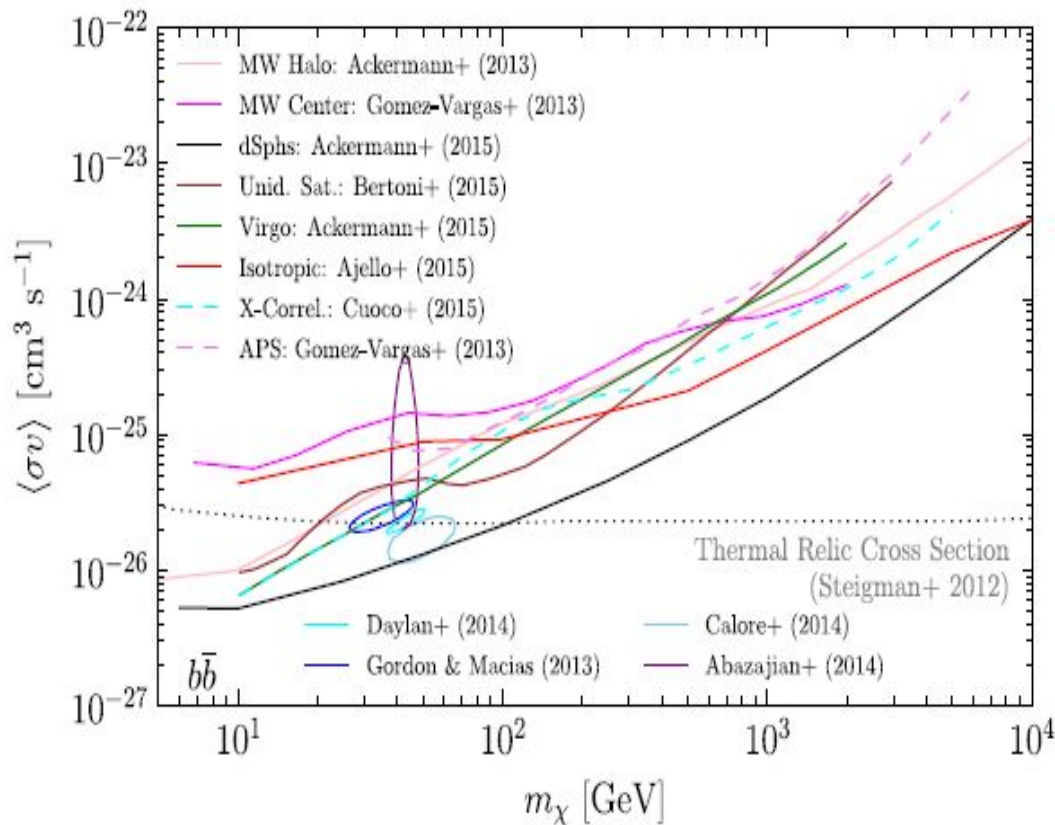
Gamma-ray Flux

$$\frac{d\Phi_\gamma}{dE_\gamma}(E_\gamma, \phi, \theta) = \frac{1}{4\pi} \frac{\langle \sigma_{ann} v \rangle}{2m_{WIMP}^2} \sum_f \frac{dN_\gamma^f}{dE_\gamma} B_f$$

$$\times \int_{\Delta\Omega(\phi, \theta)} d\Omega' \int_{los} \rho^2(r(l, \phi')) dl(r, \phi')$$

DM Distribution (J-Factor)

Dark Matter Indirect Detection

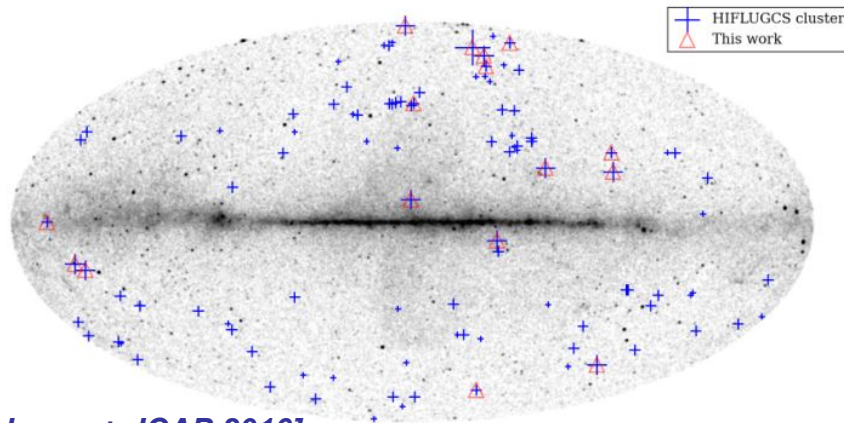


DM search targets:

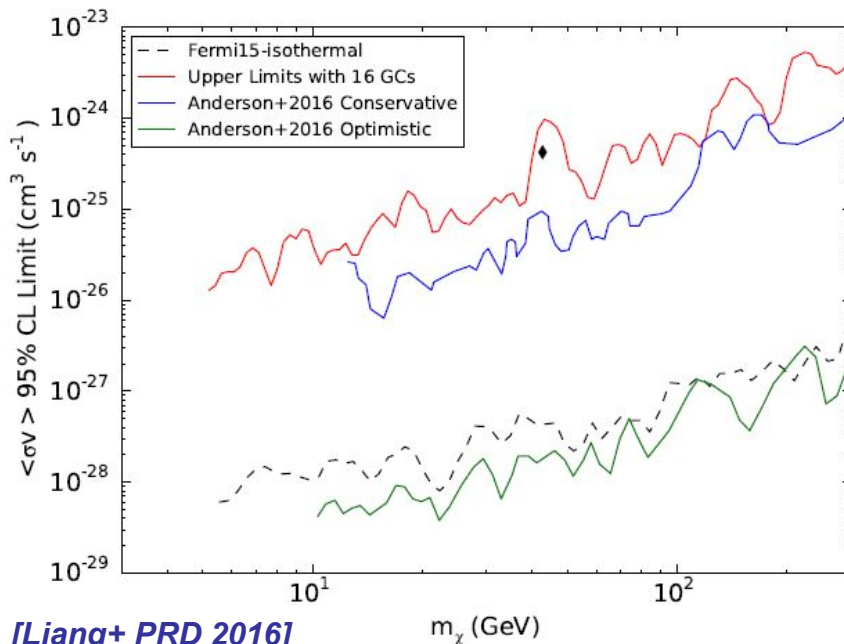
- Galactic Center
- Milky Way Halo
- Galaxy Clusters
- Dwarf Satellites
- Isotropic Background
- and so on

[Charles+ PhysRep 2016]

Search for a gamma-ray line feature from a group of nearby Galaxy clusters with Fermi LAT Pass 8 data



[anderson+ JCAP 2016]



[Liang+ PRD 2016]

- search for line-like signals from 16 nearby galaxy clusters
- stacking analysis method is used
- improvements may be due to Pass 8 data and stacking method we used
- there is a weak excess around 43 GeV
- more details can be found in Liang+ PRD 2016 (arXiv:1602.06527)

Thanks for your attention!