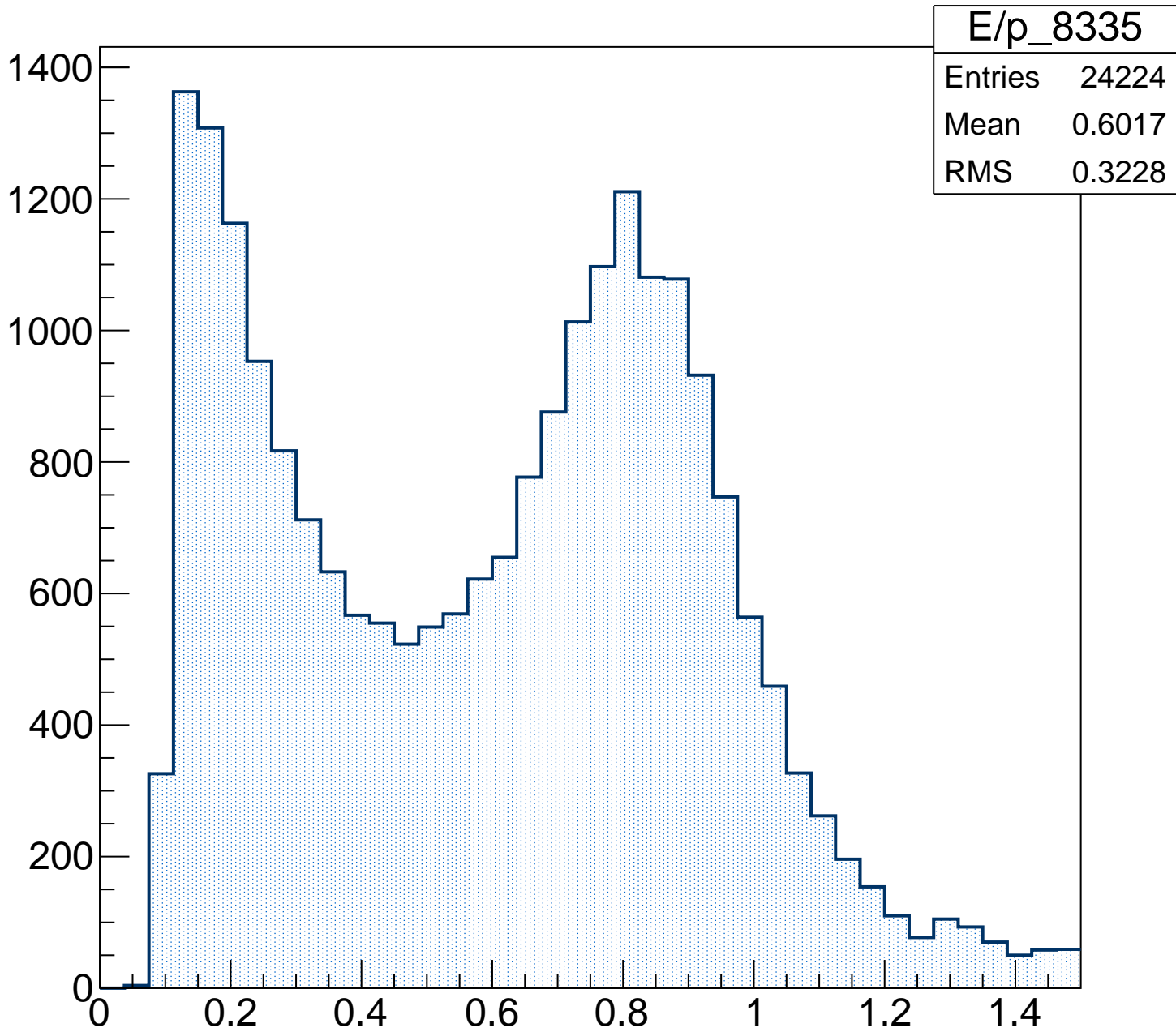
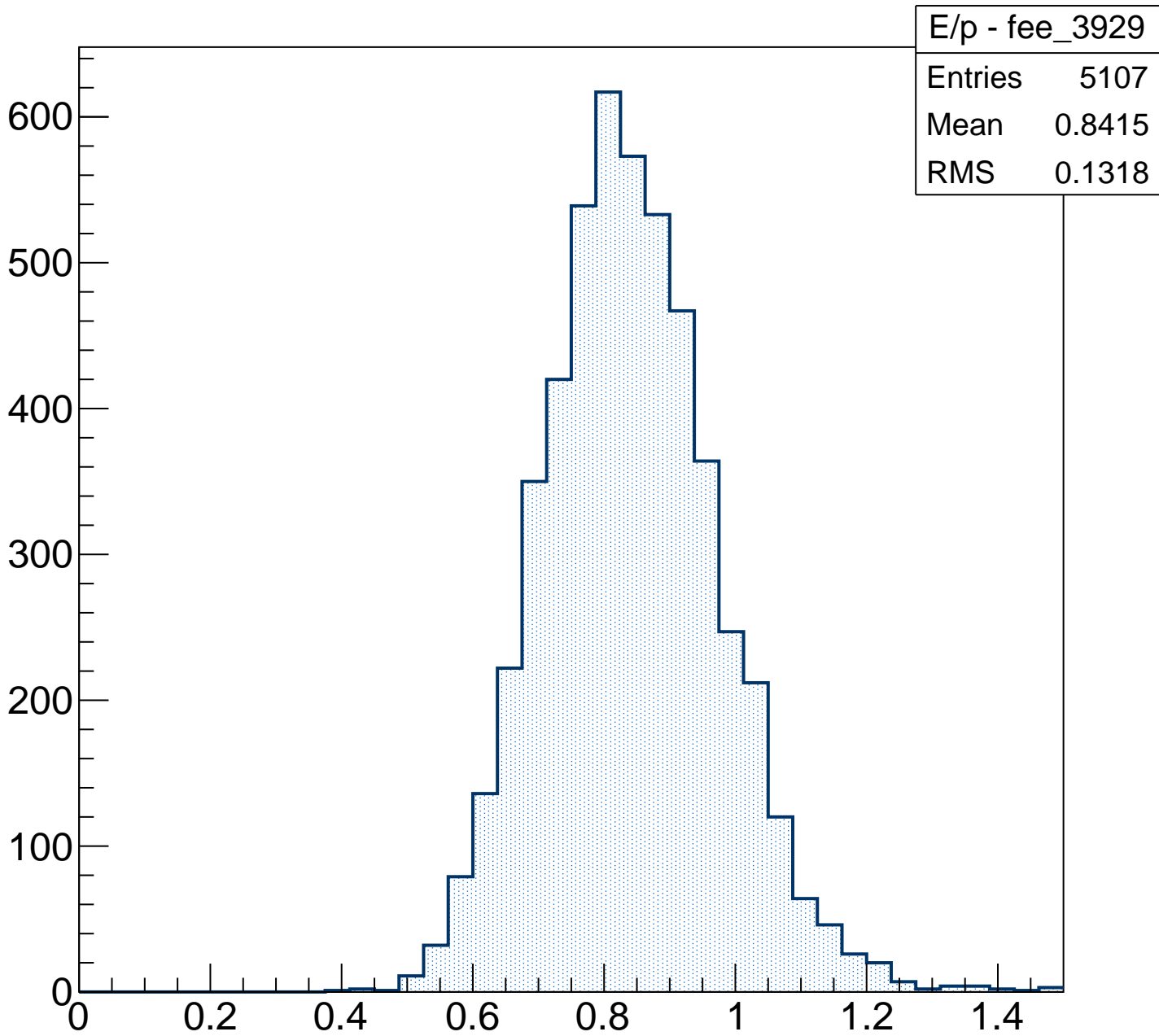


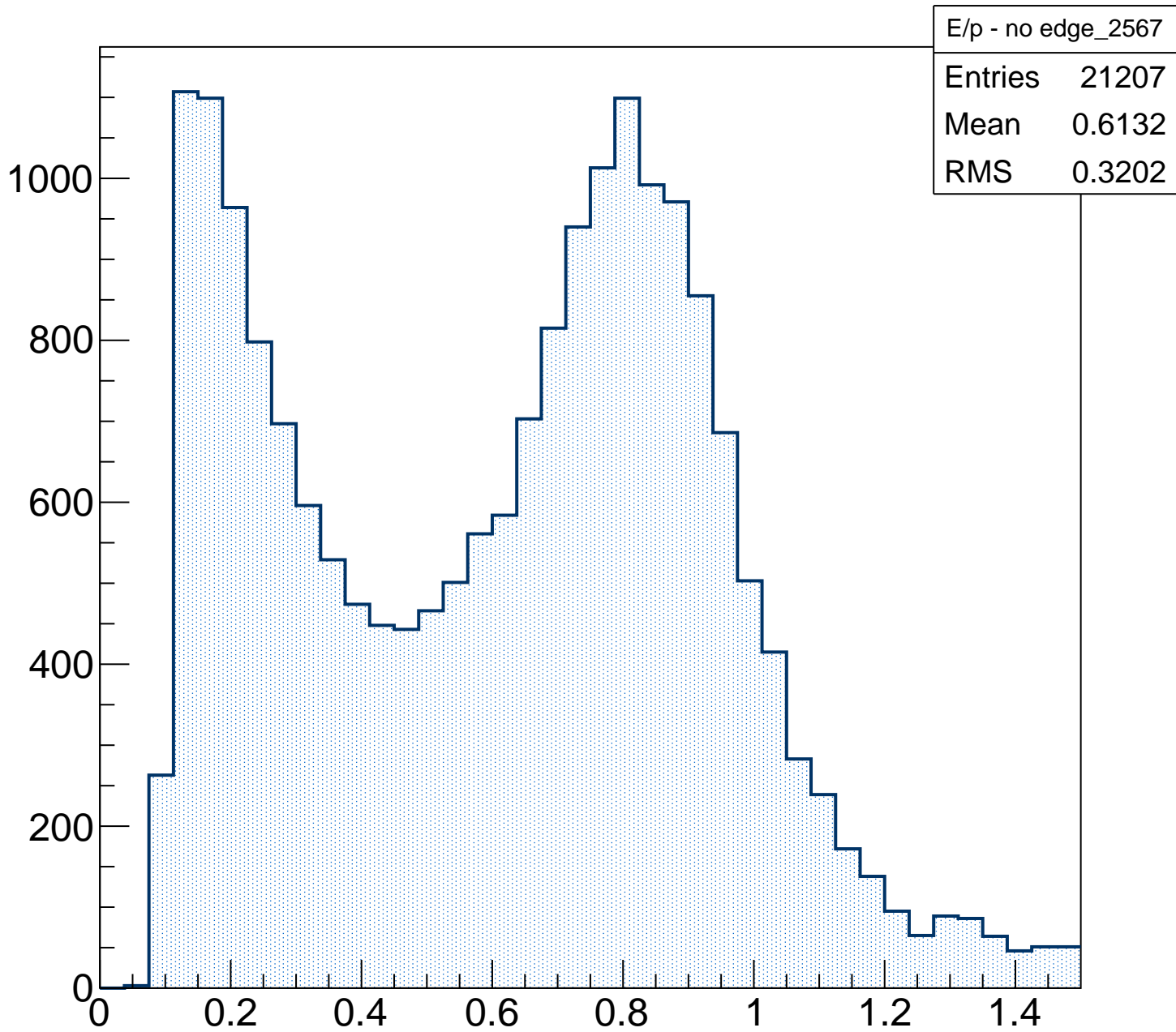
# E/p



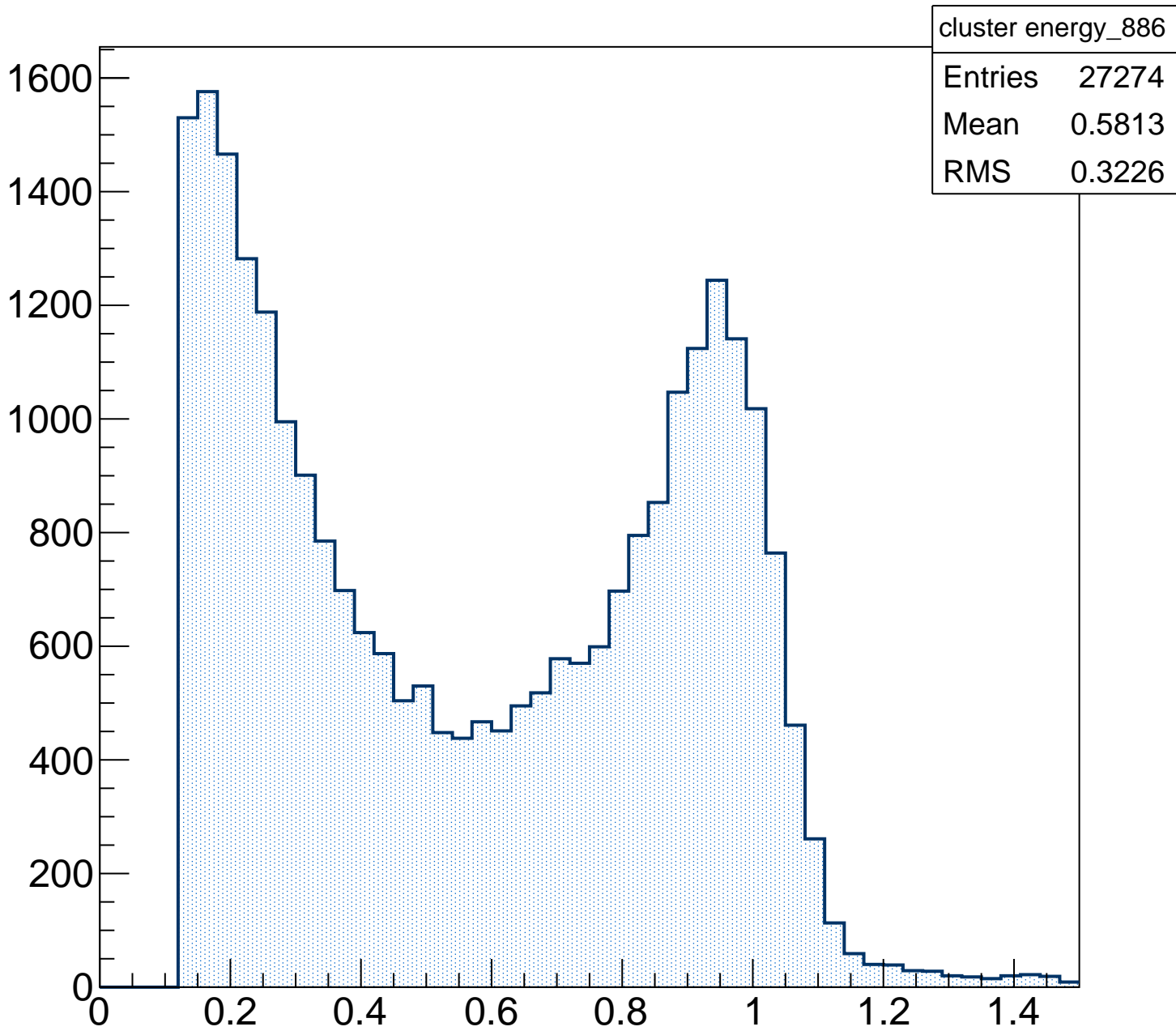
# E/p - fee



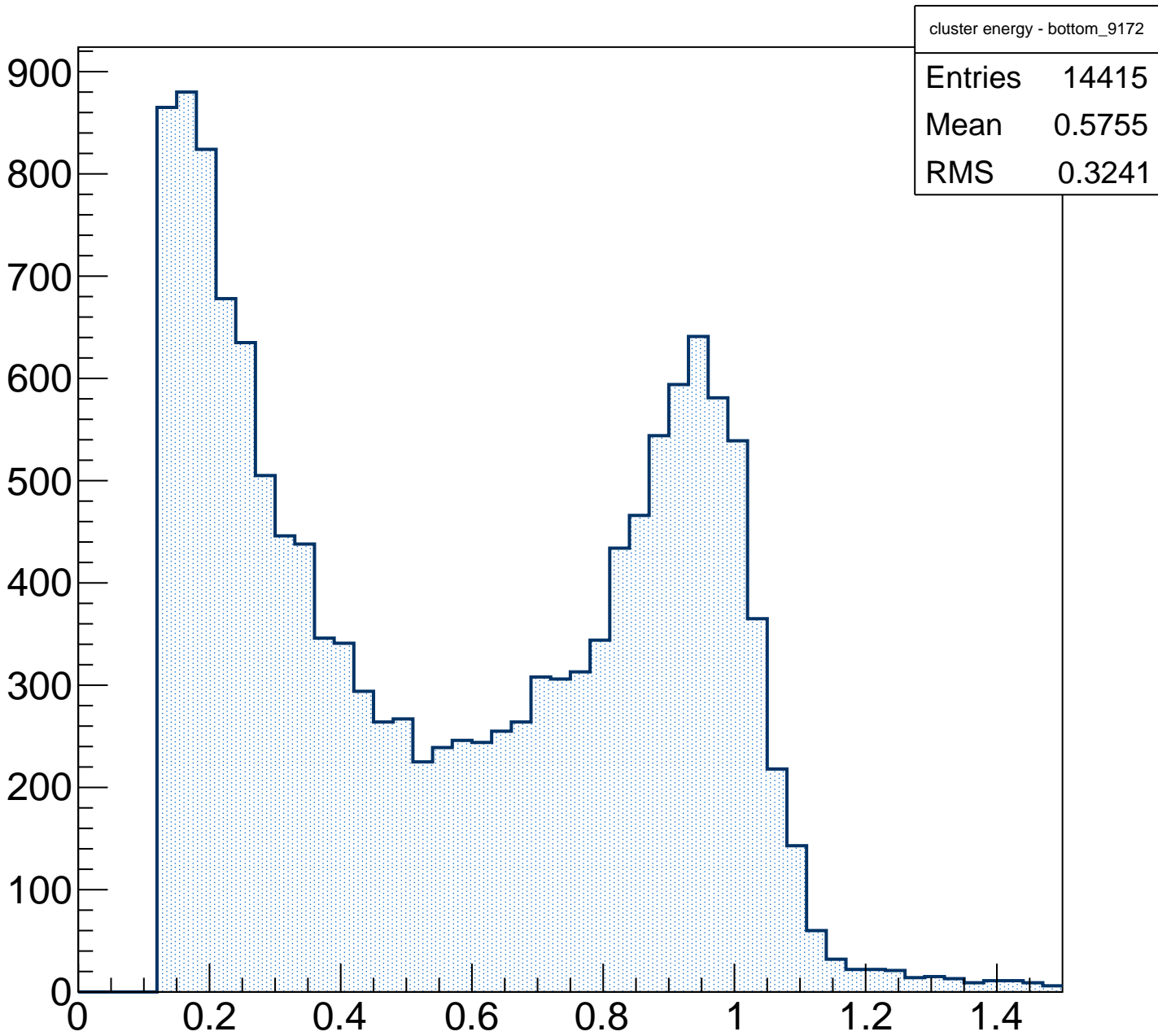
# E/p - no edge



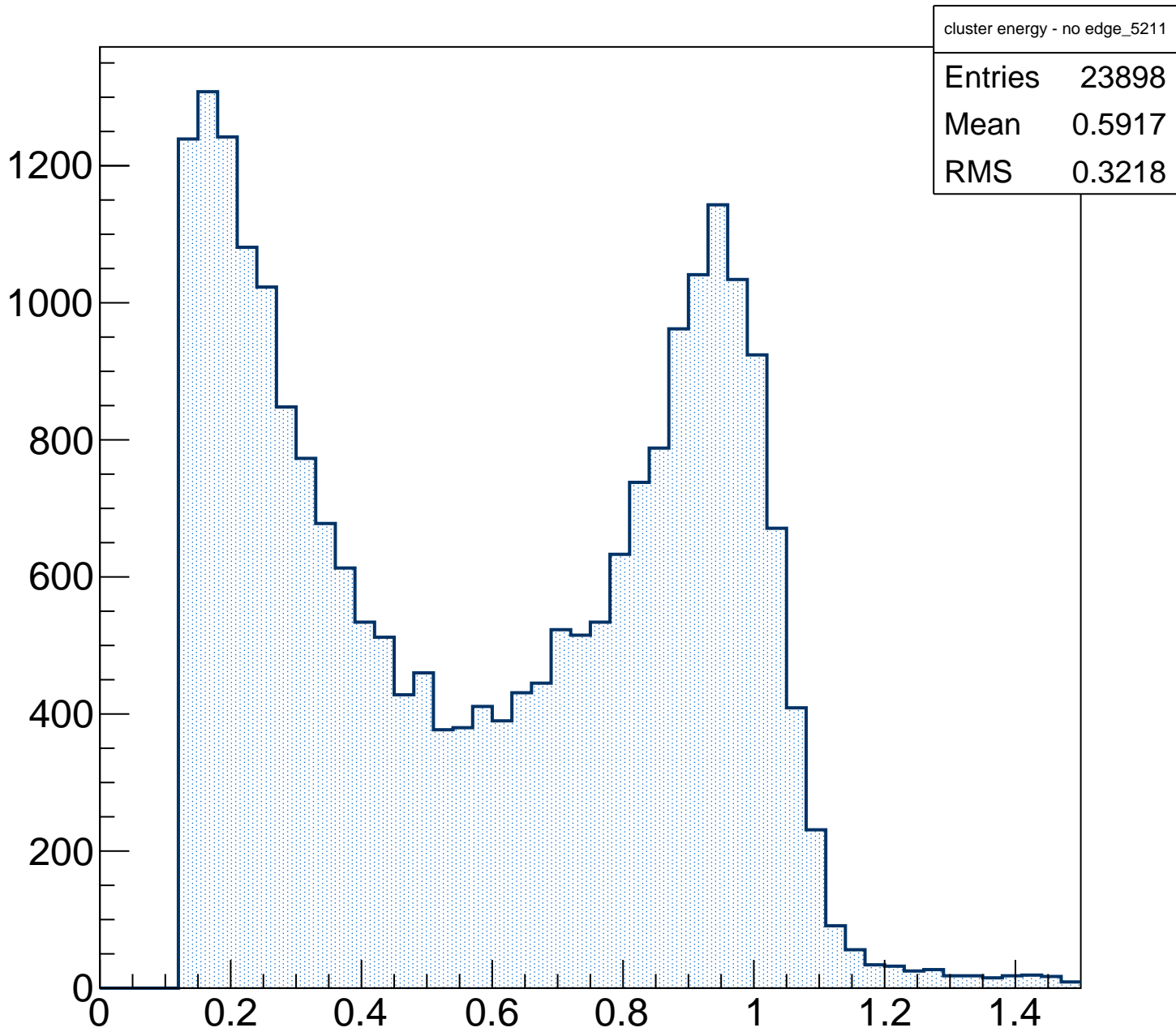
# cluster energy



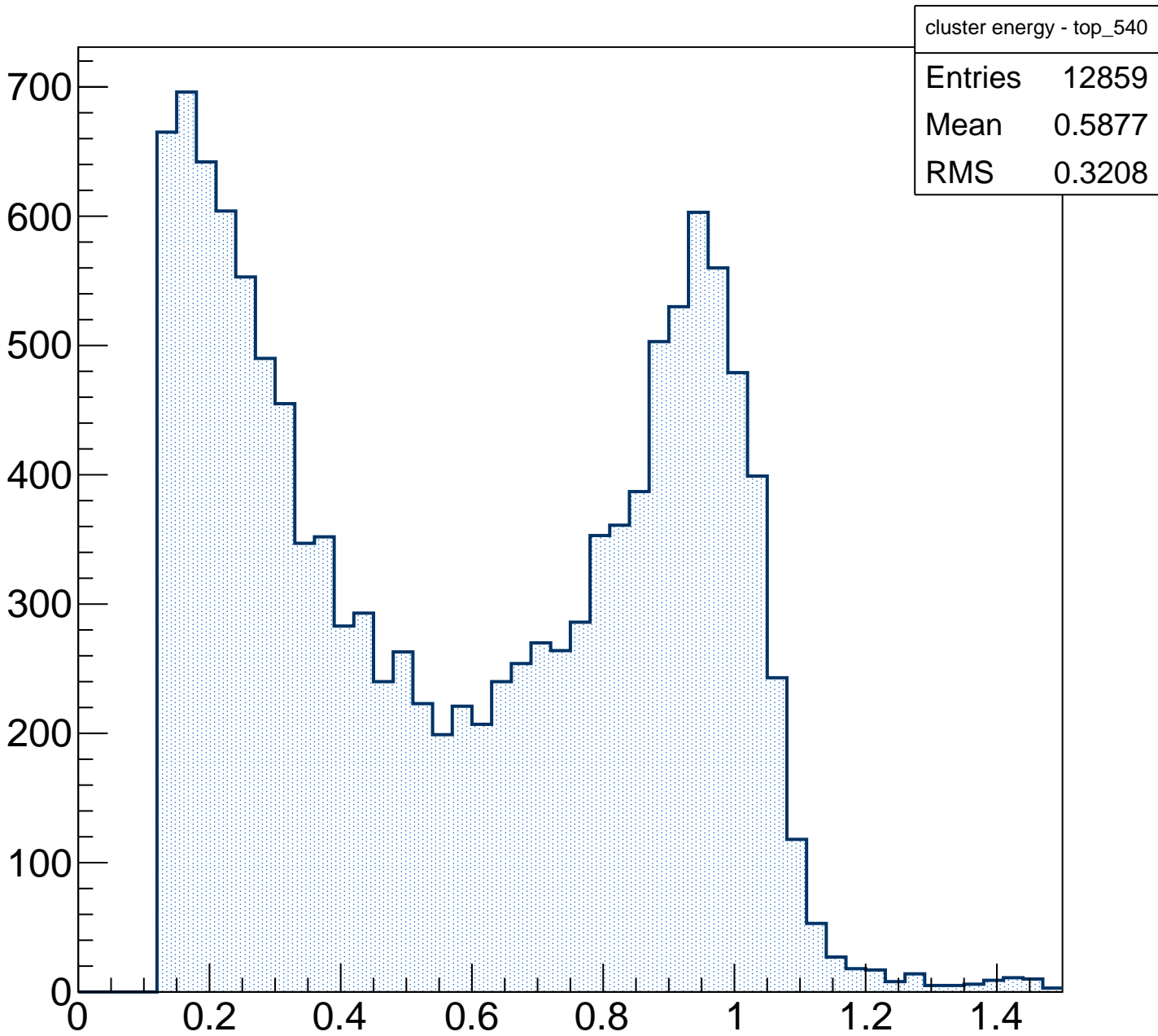
# cluster energy - bottom



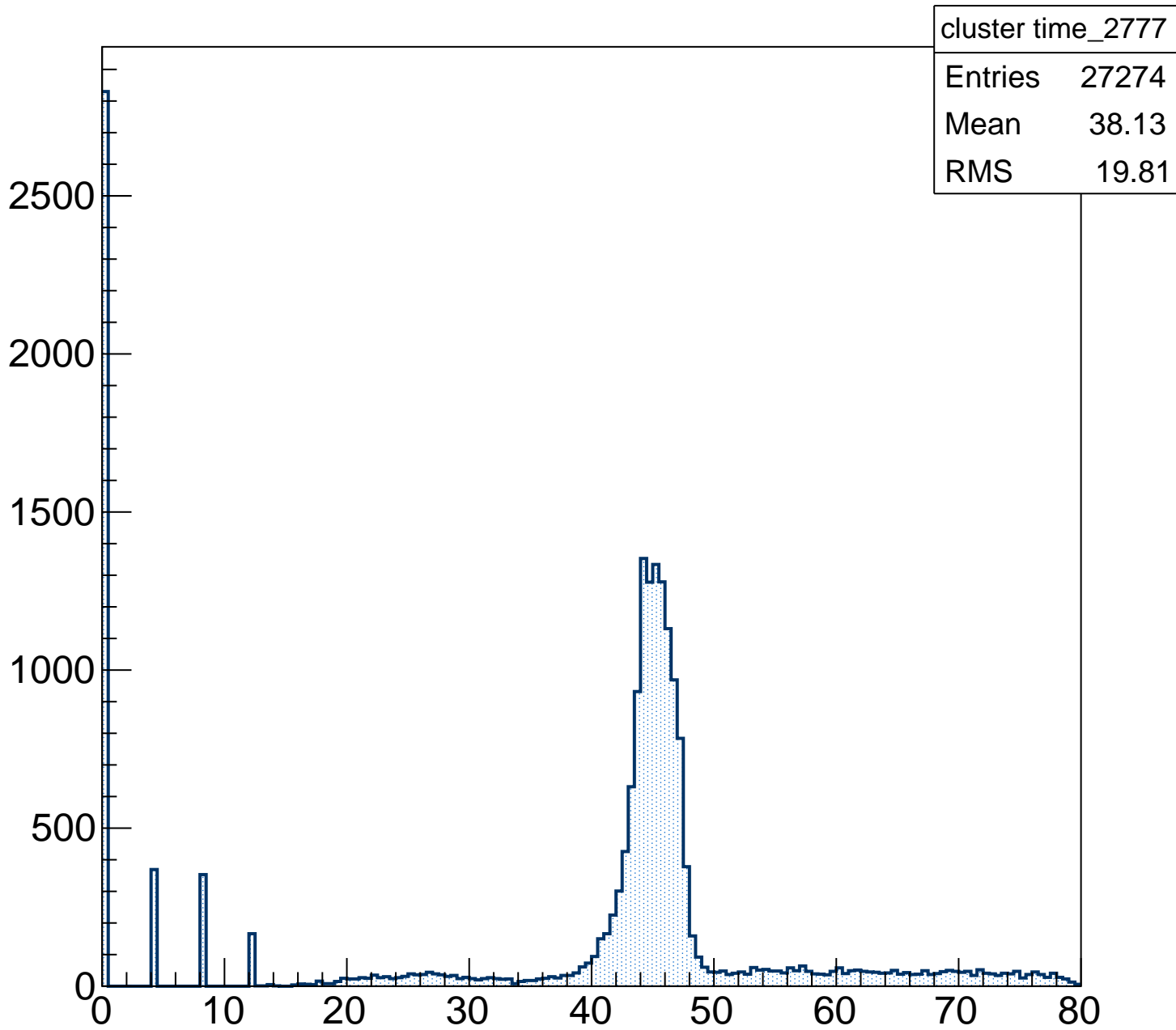
# cluster energy - no edge



# cluster energy - top

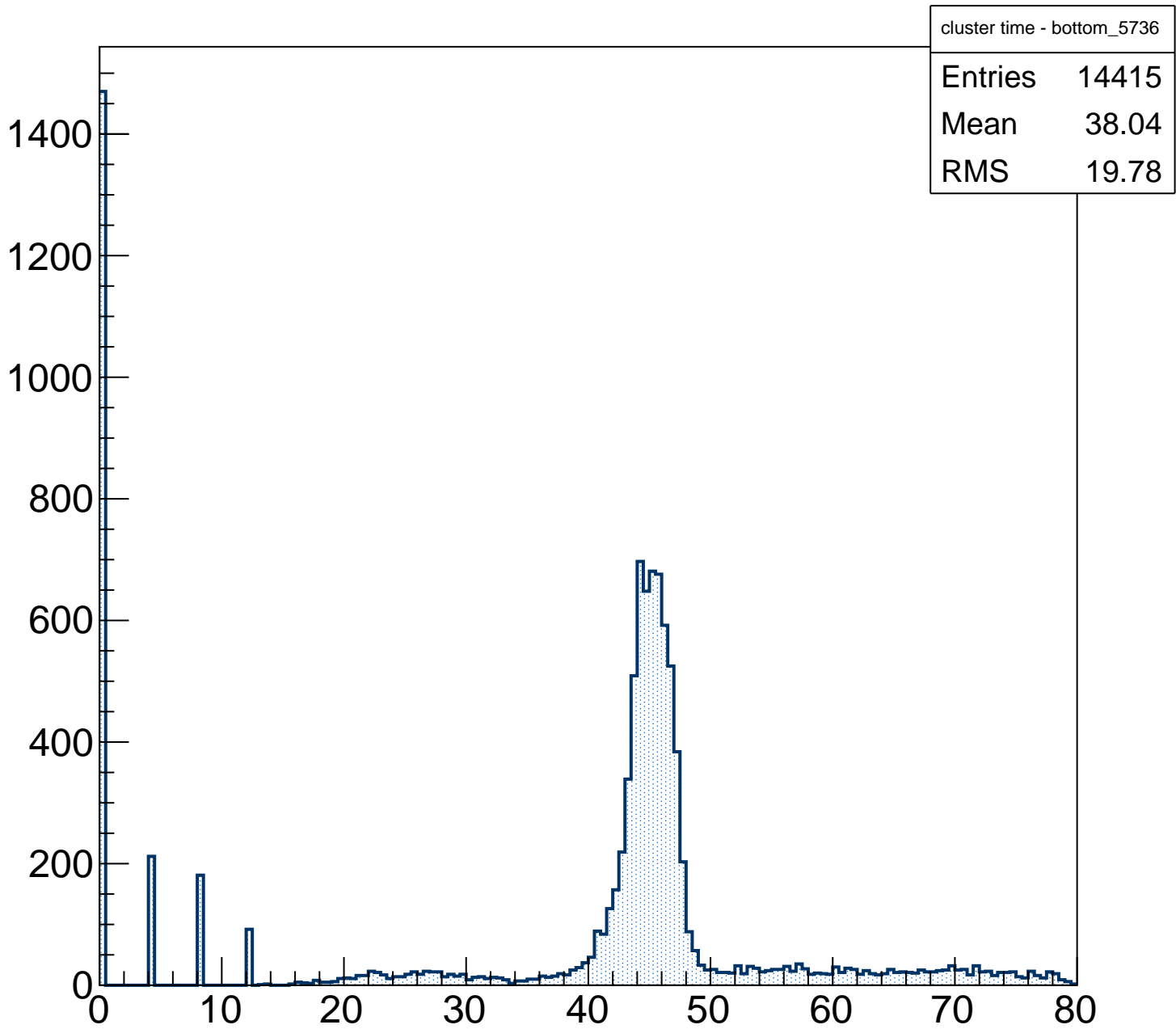


# cluster time

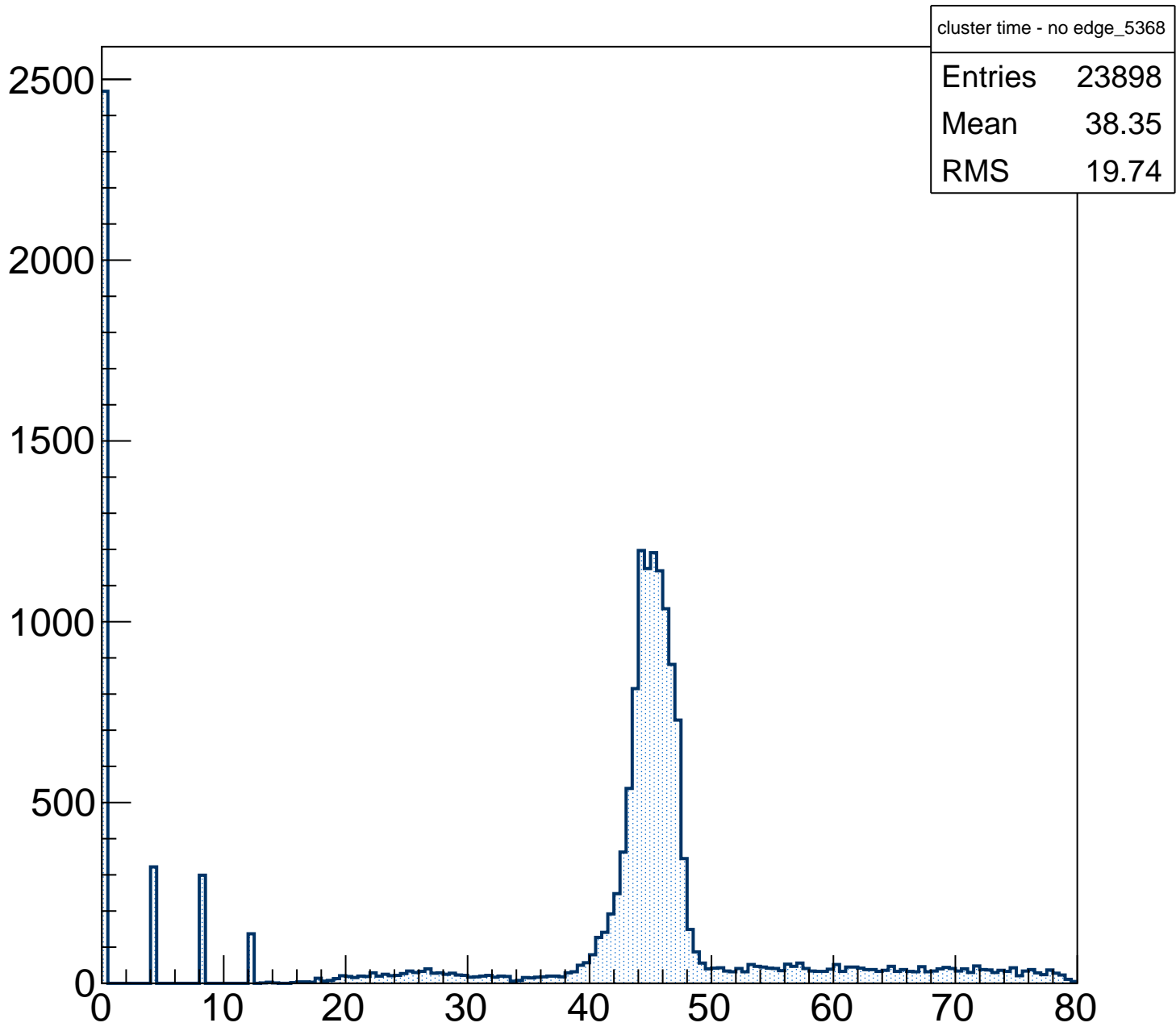




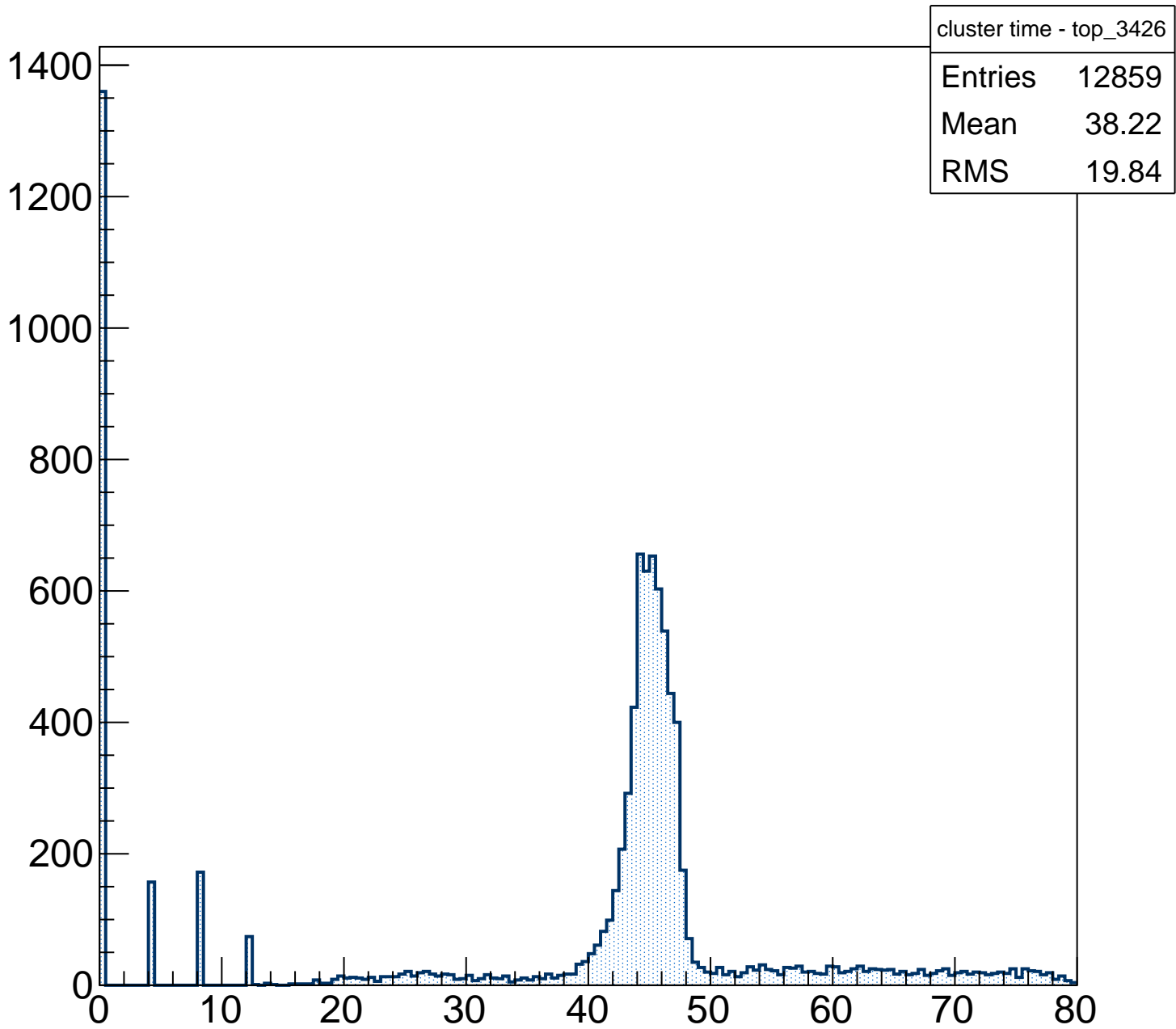
# cluster time - bottom



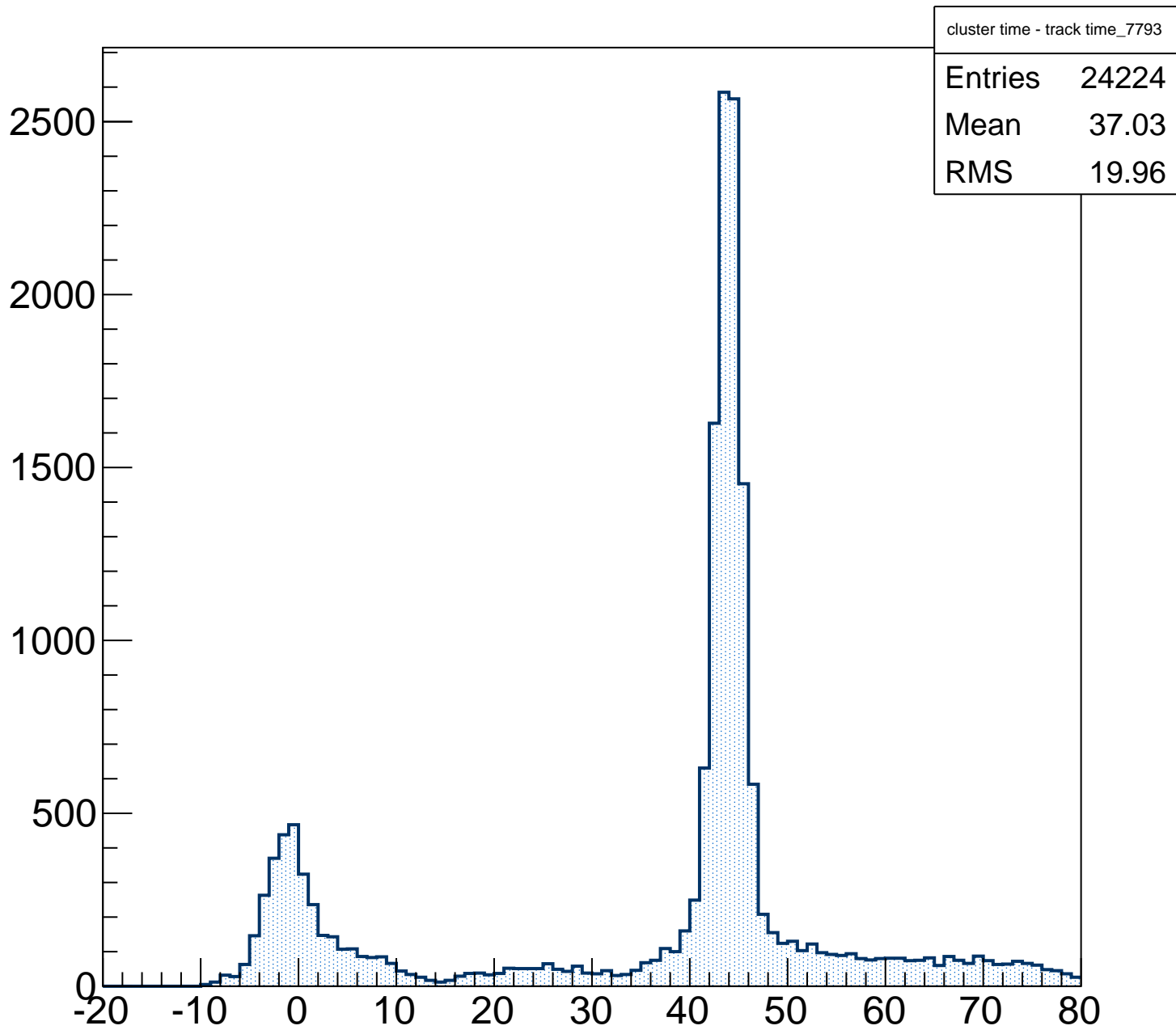
# cluster time - no edge



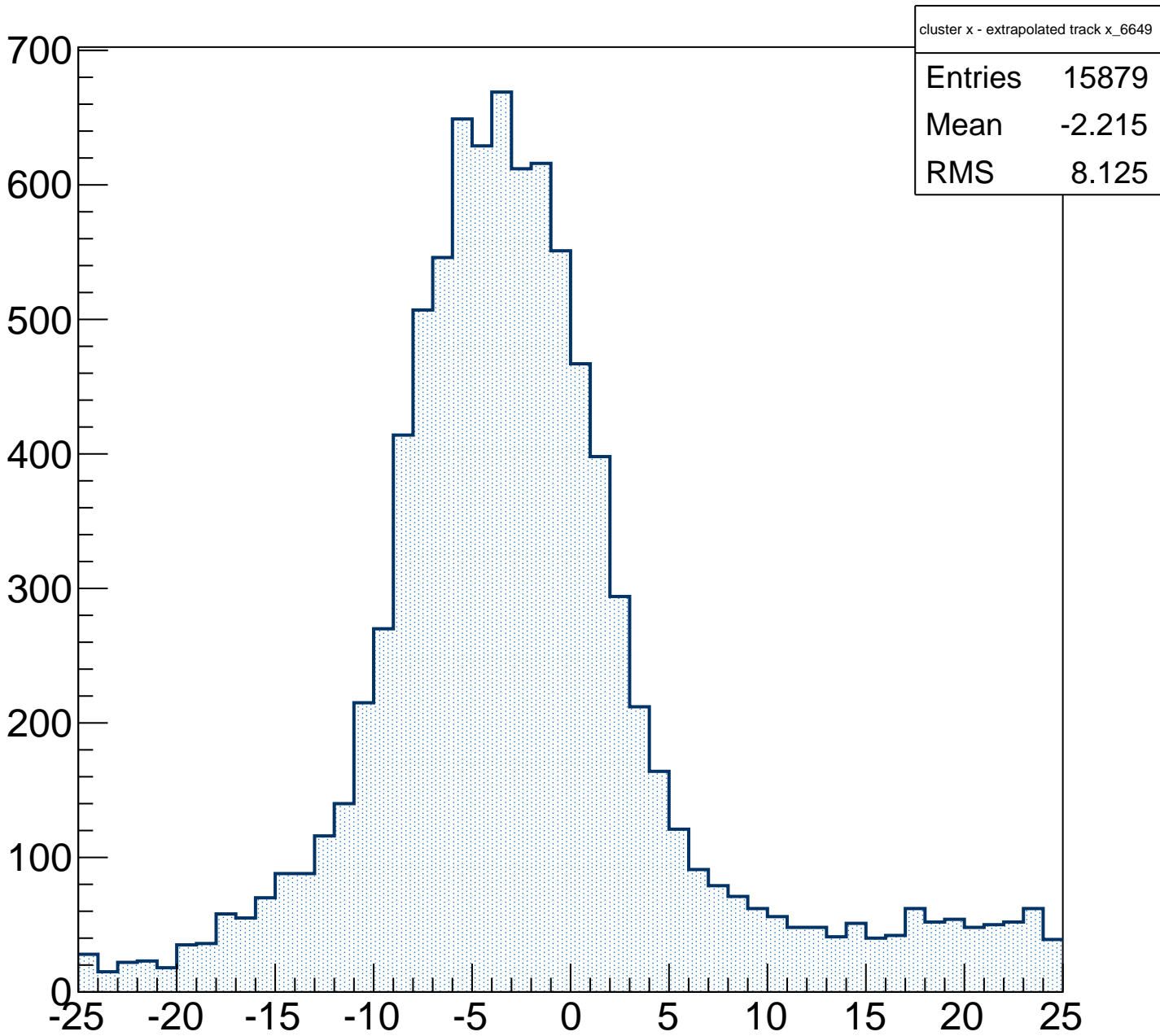
# cluster time - top



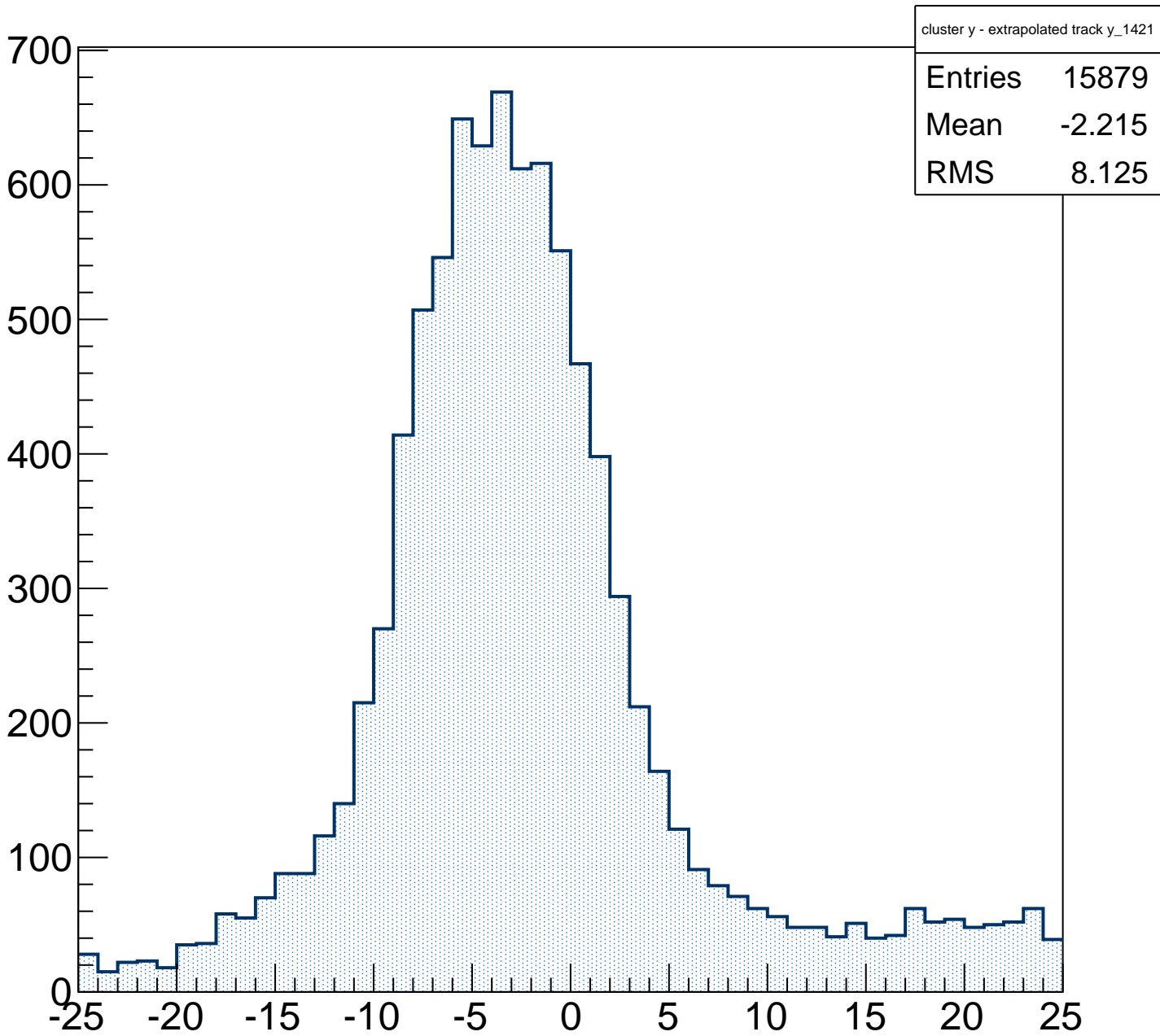
# cluster time - track time



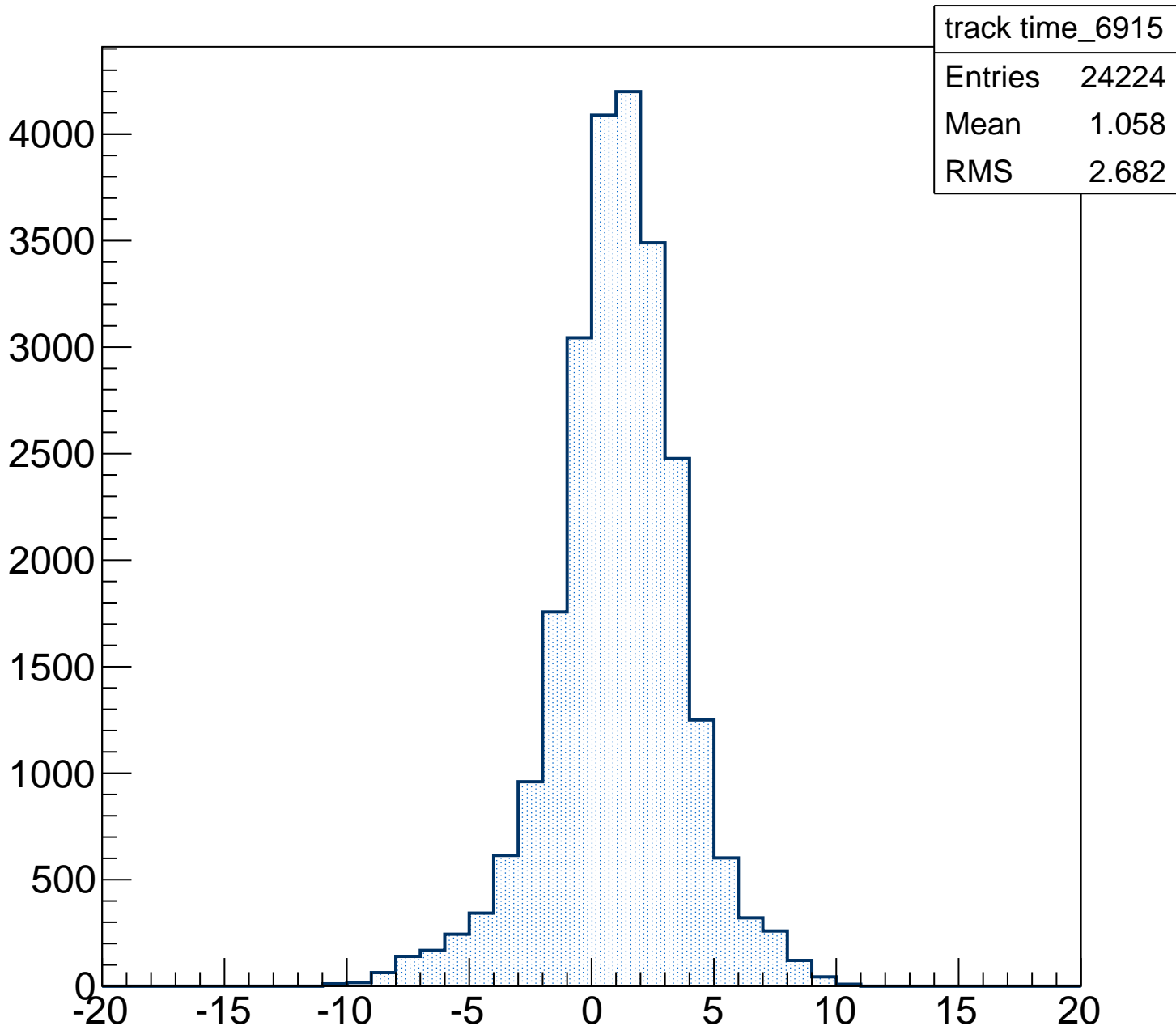
# cluster x - extrapolated track x



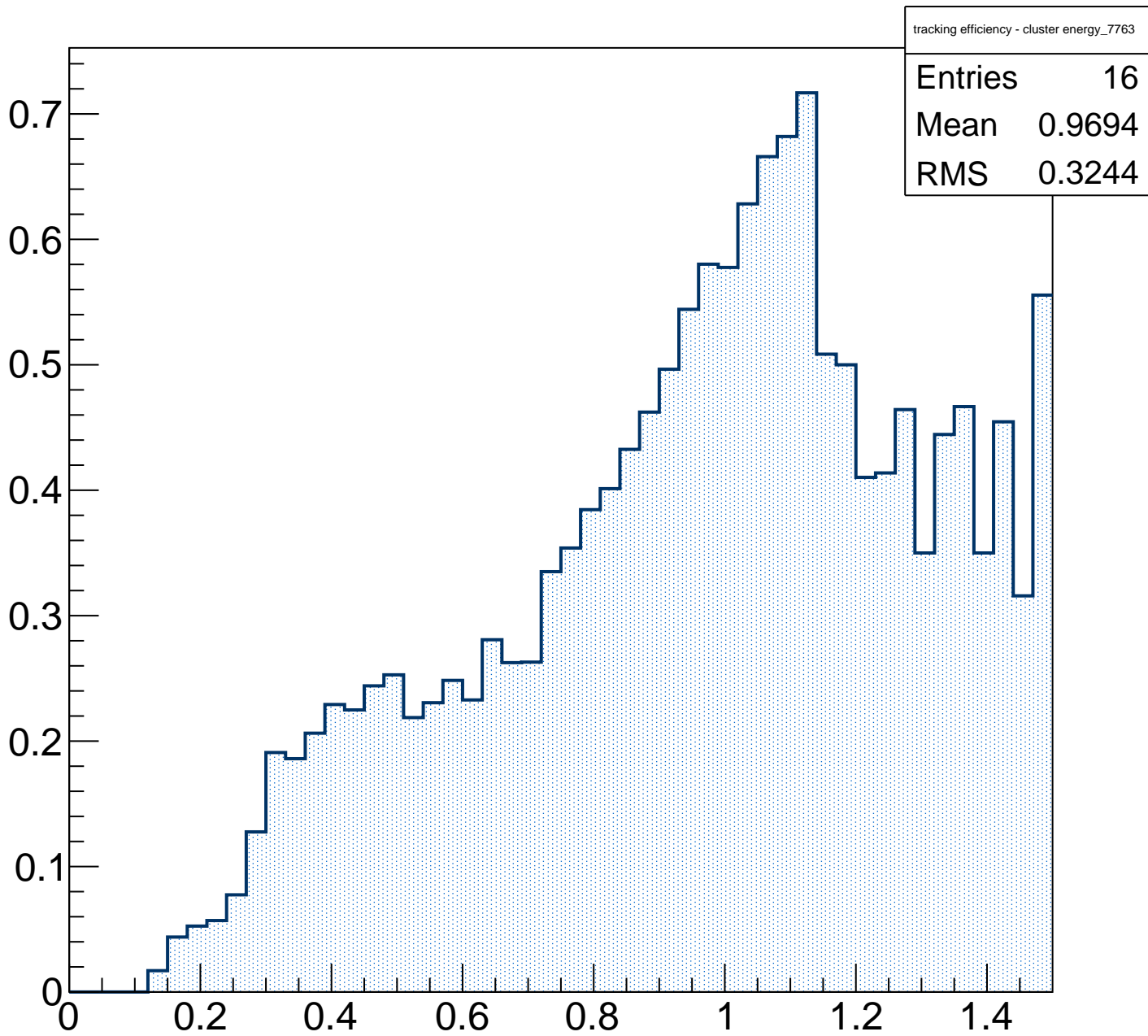
# cluster y - extrapolated track y



# track time

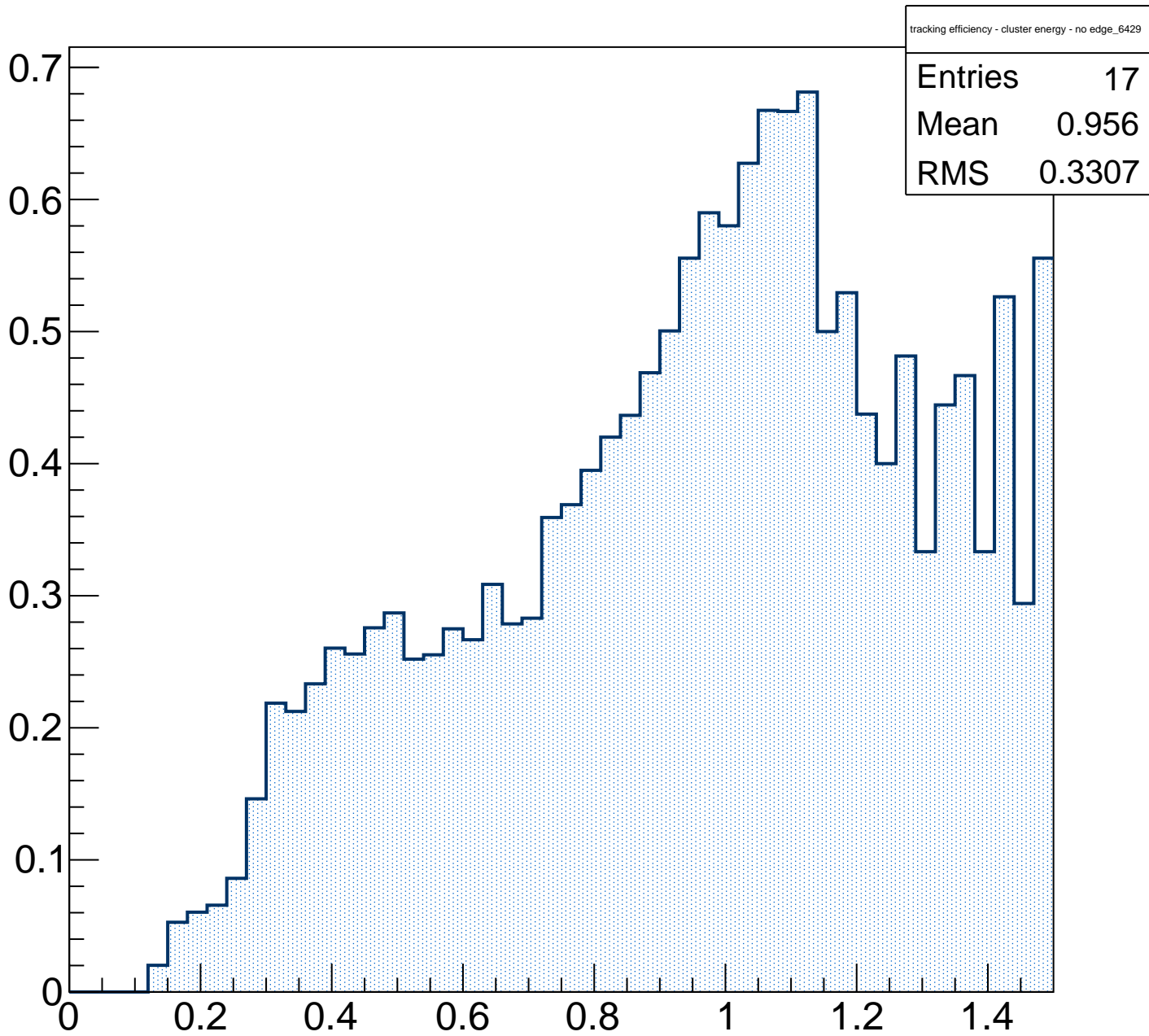


# tracking efficiency - cluster energy

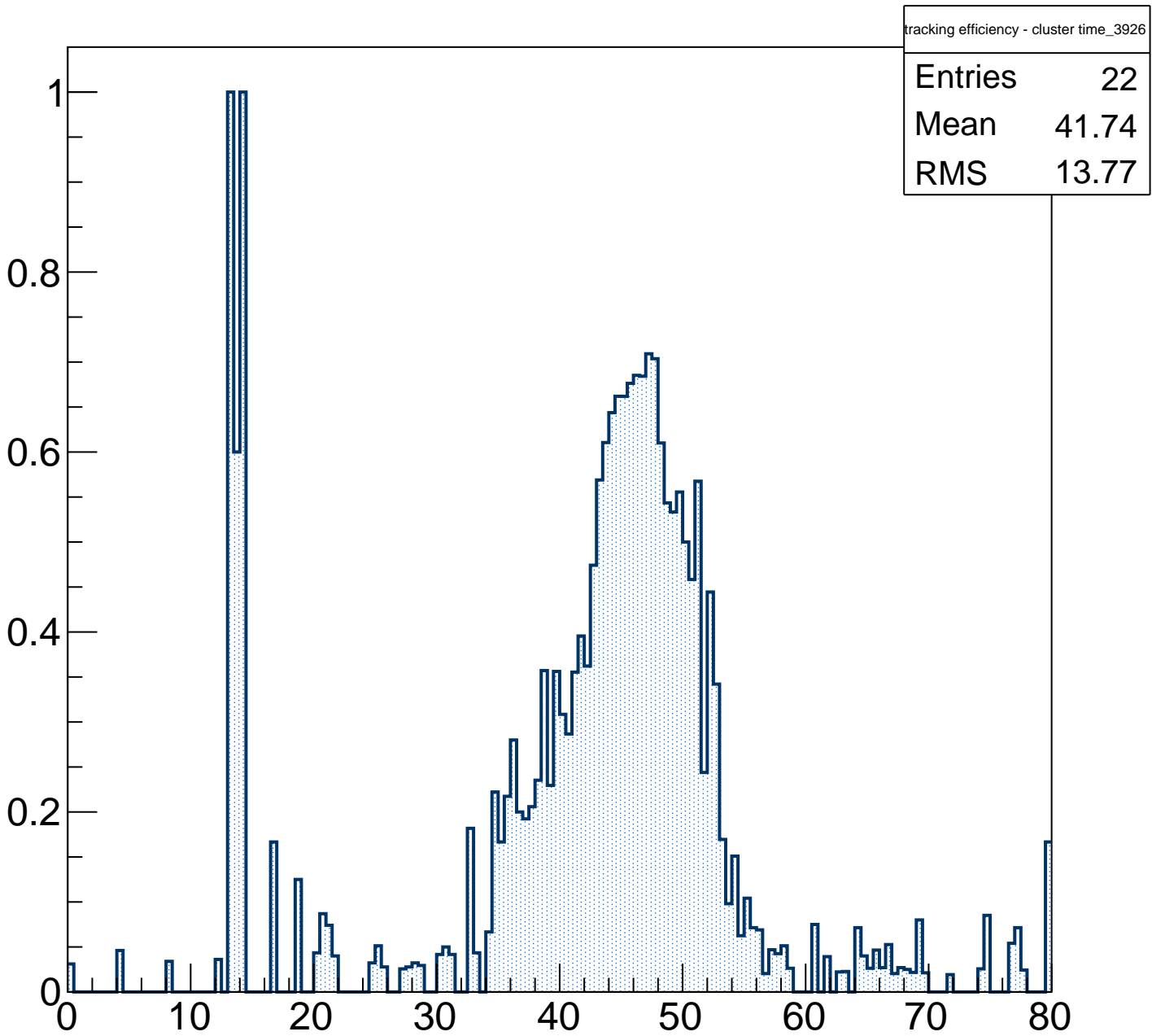




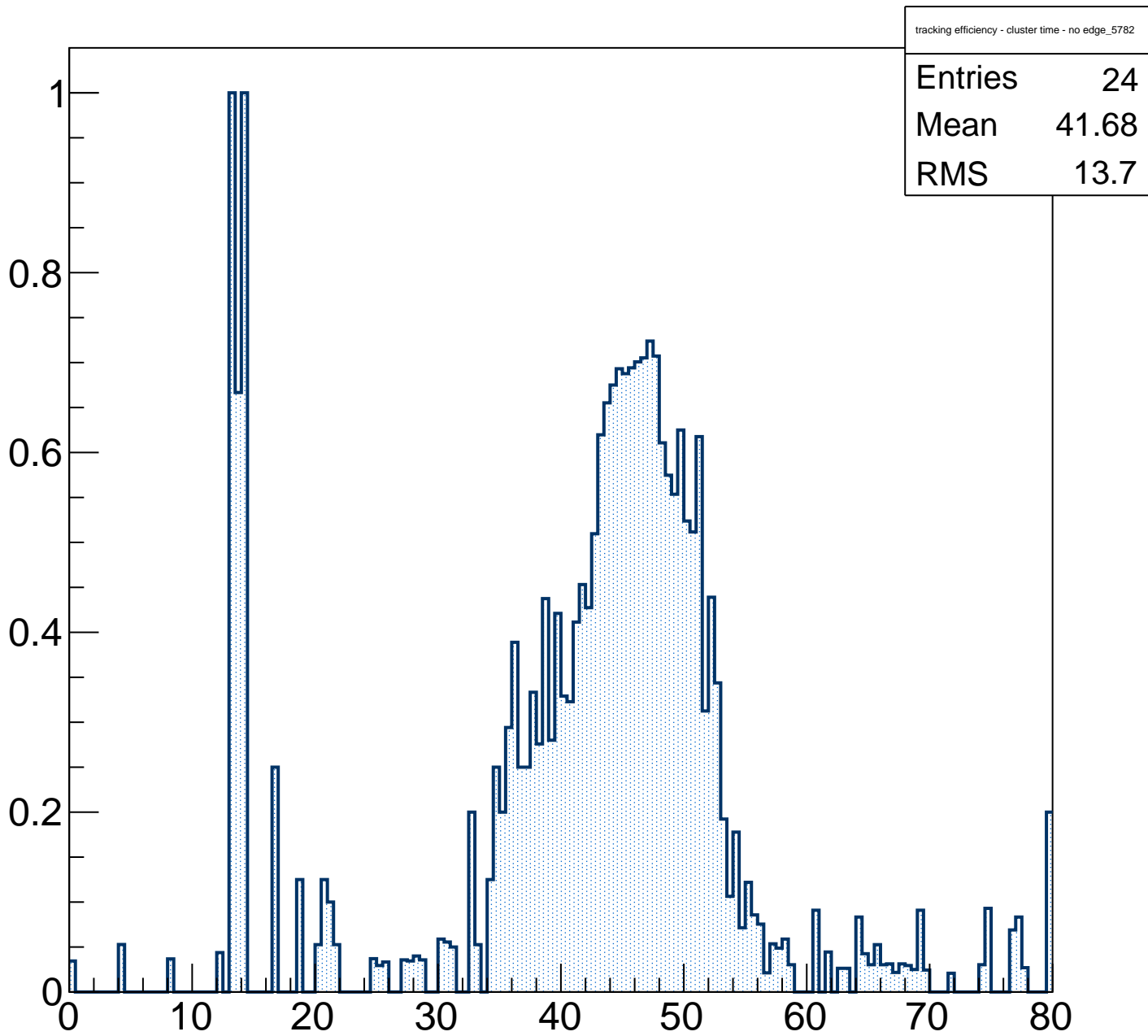
# tracking efficiency - cluster energy - no edge



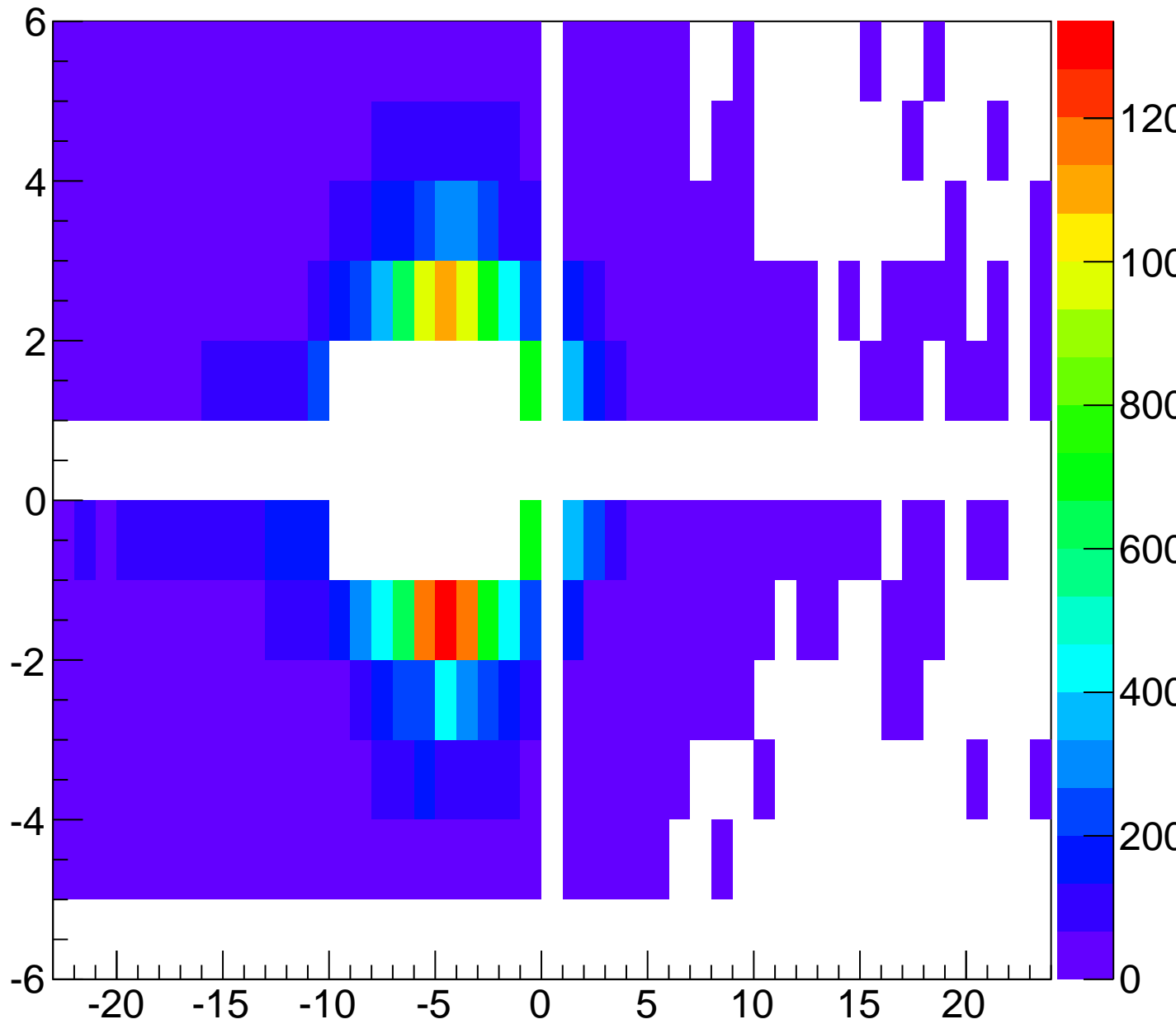
# tracking efficiency - cluster time



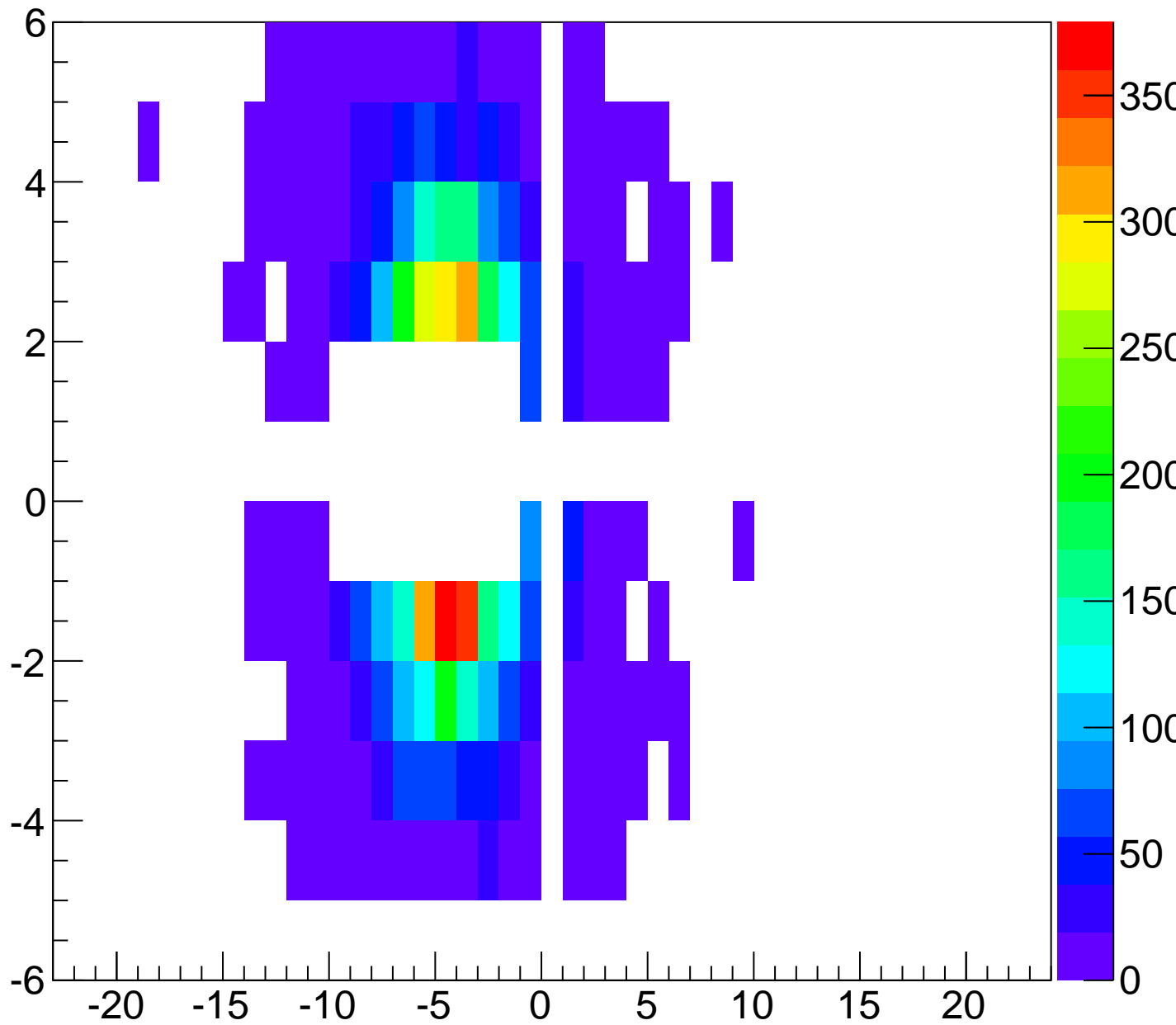
# tracking efficiency - cluster time - no edge



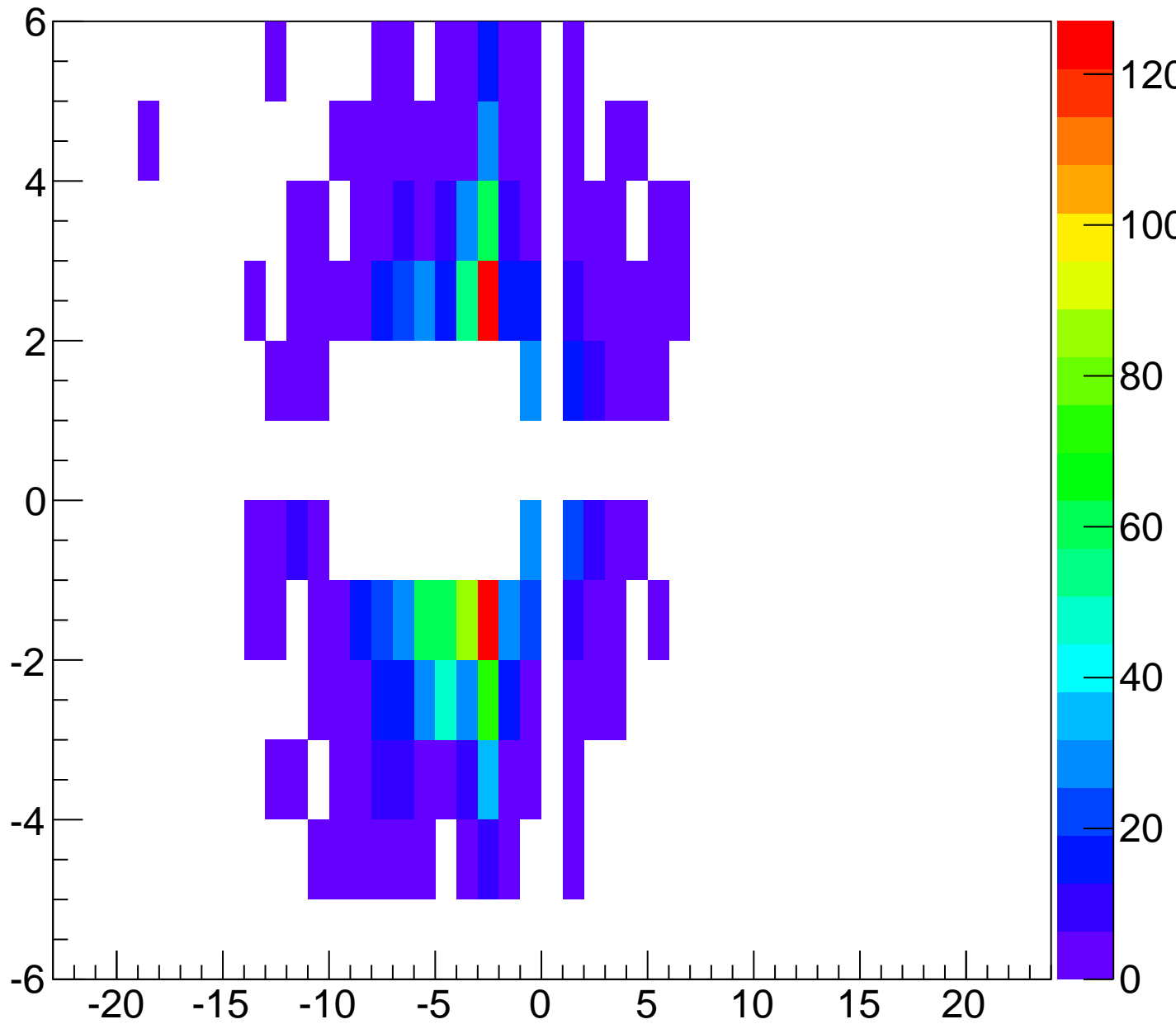
cluster count - all



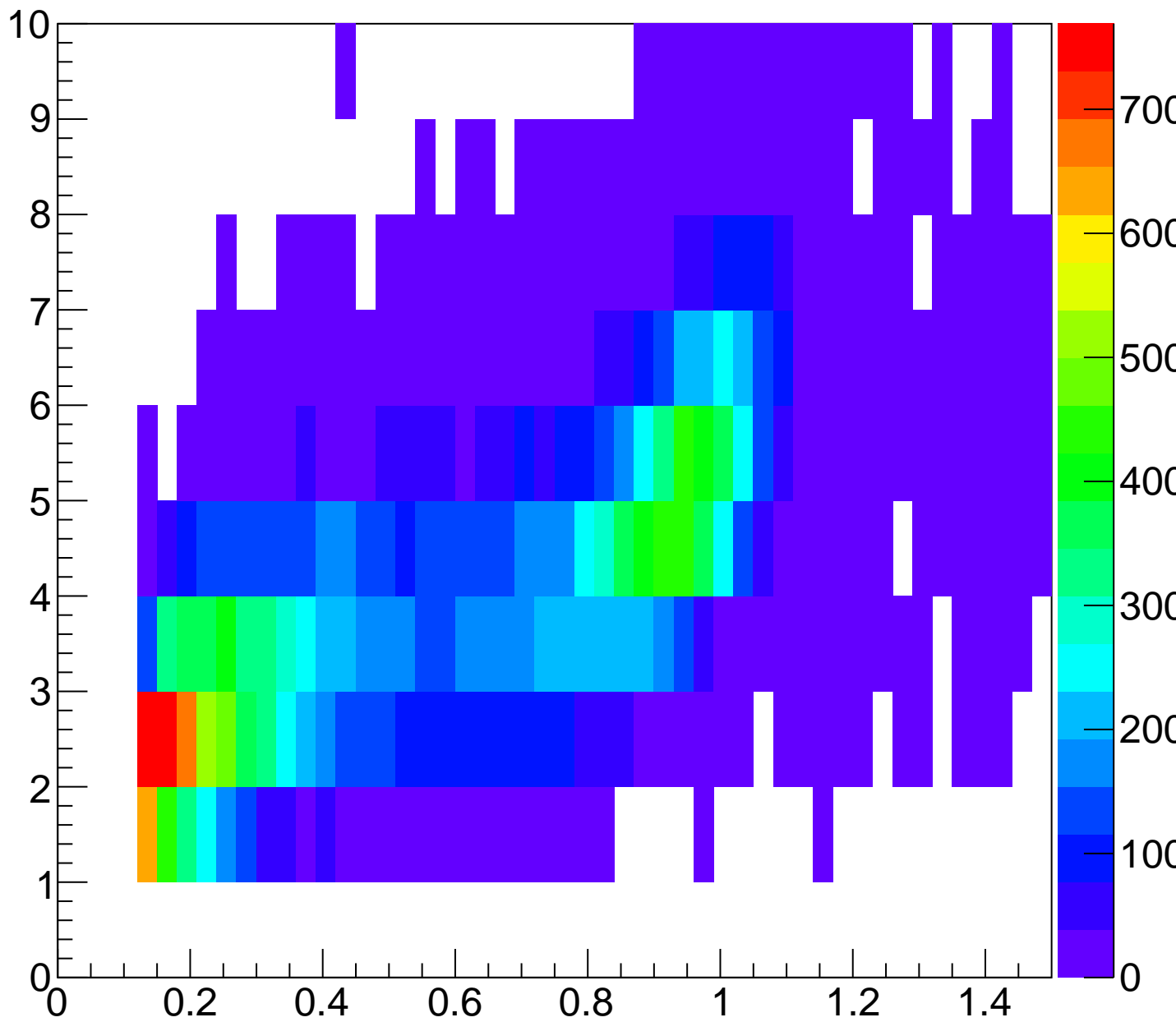
# cluster count - fee



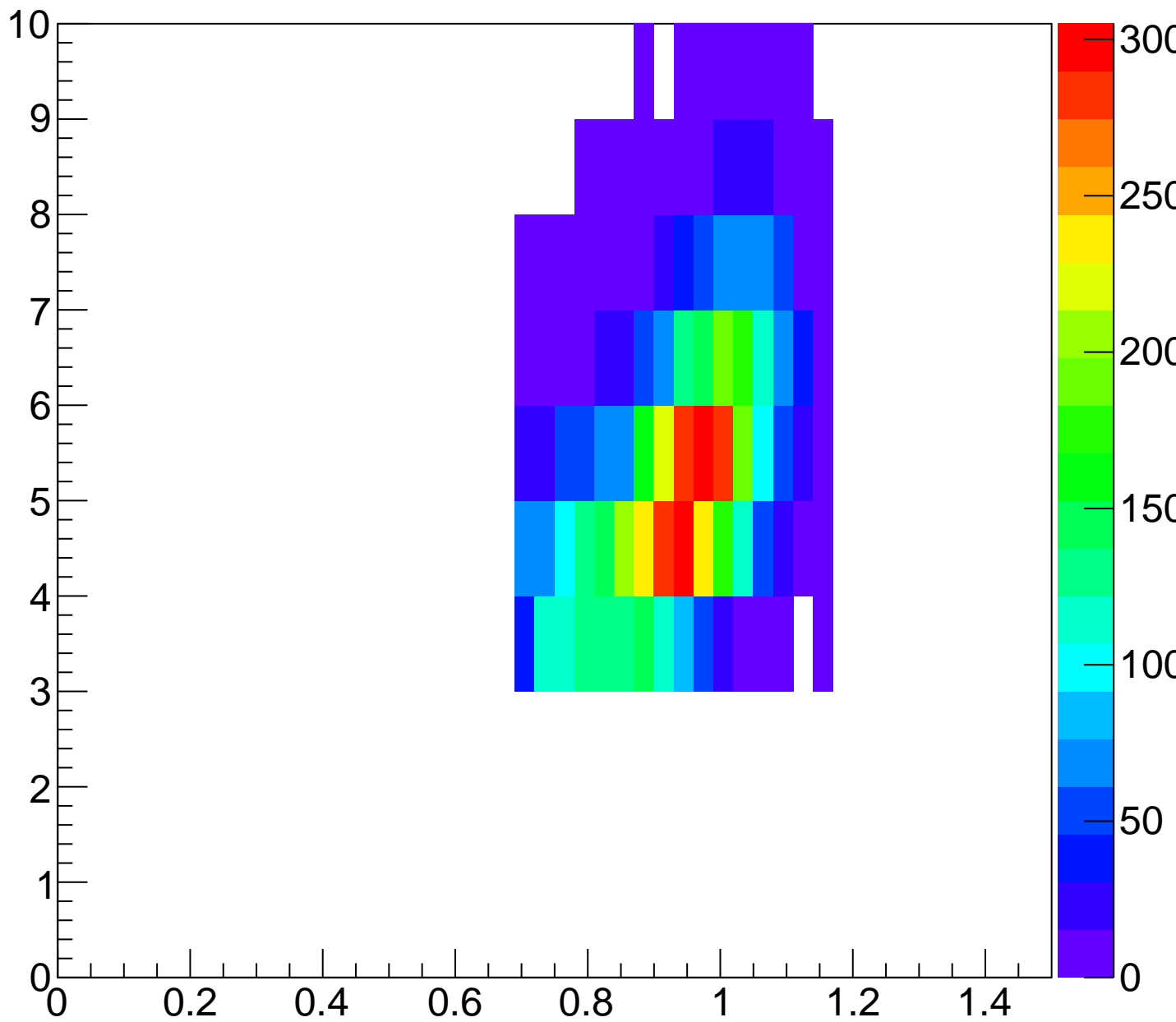
# cluster count - no match



# cluster energy v cluster size - all

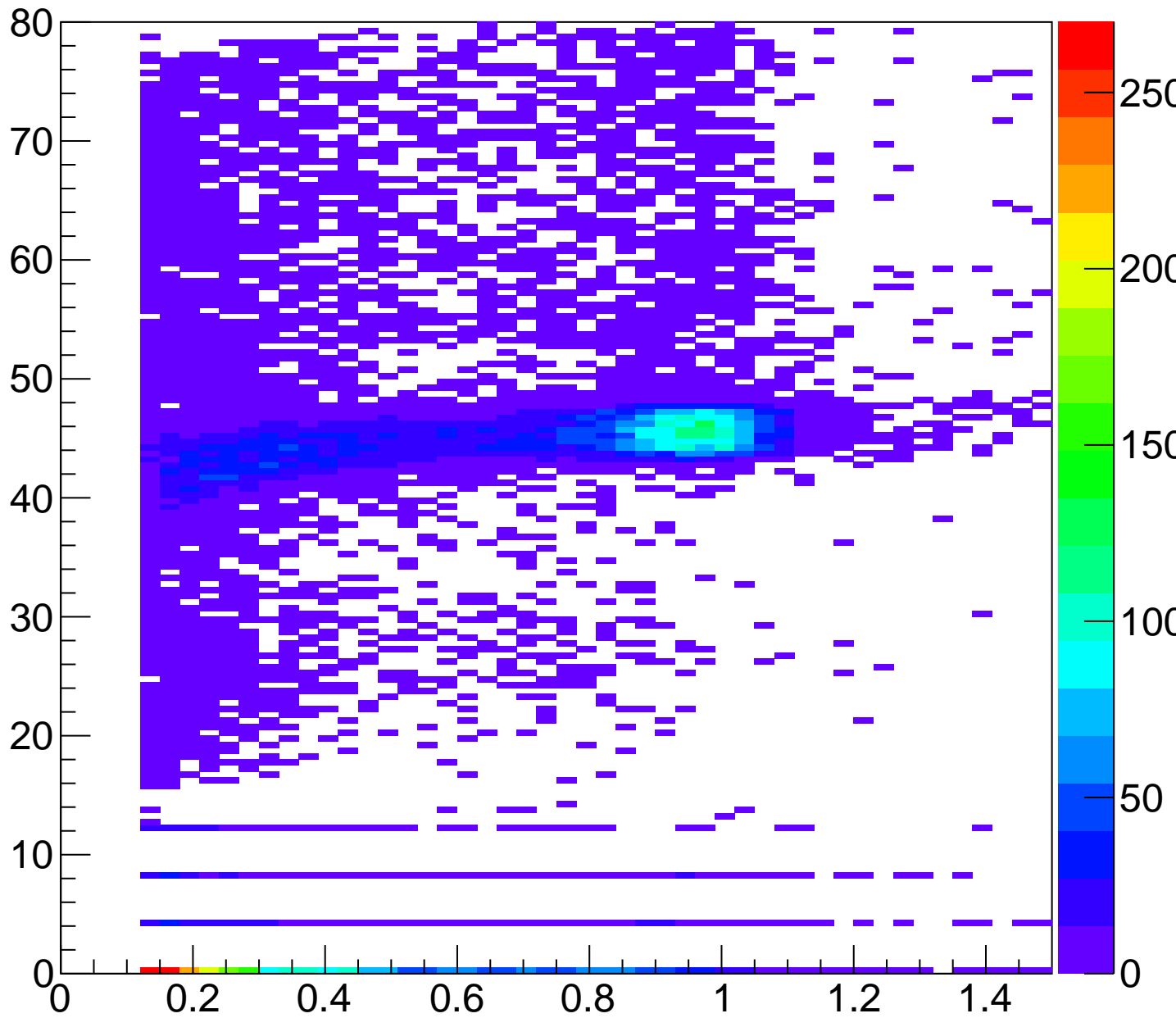


# cluster energy v cluster size - fee

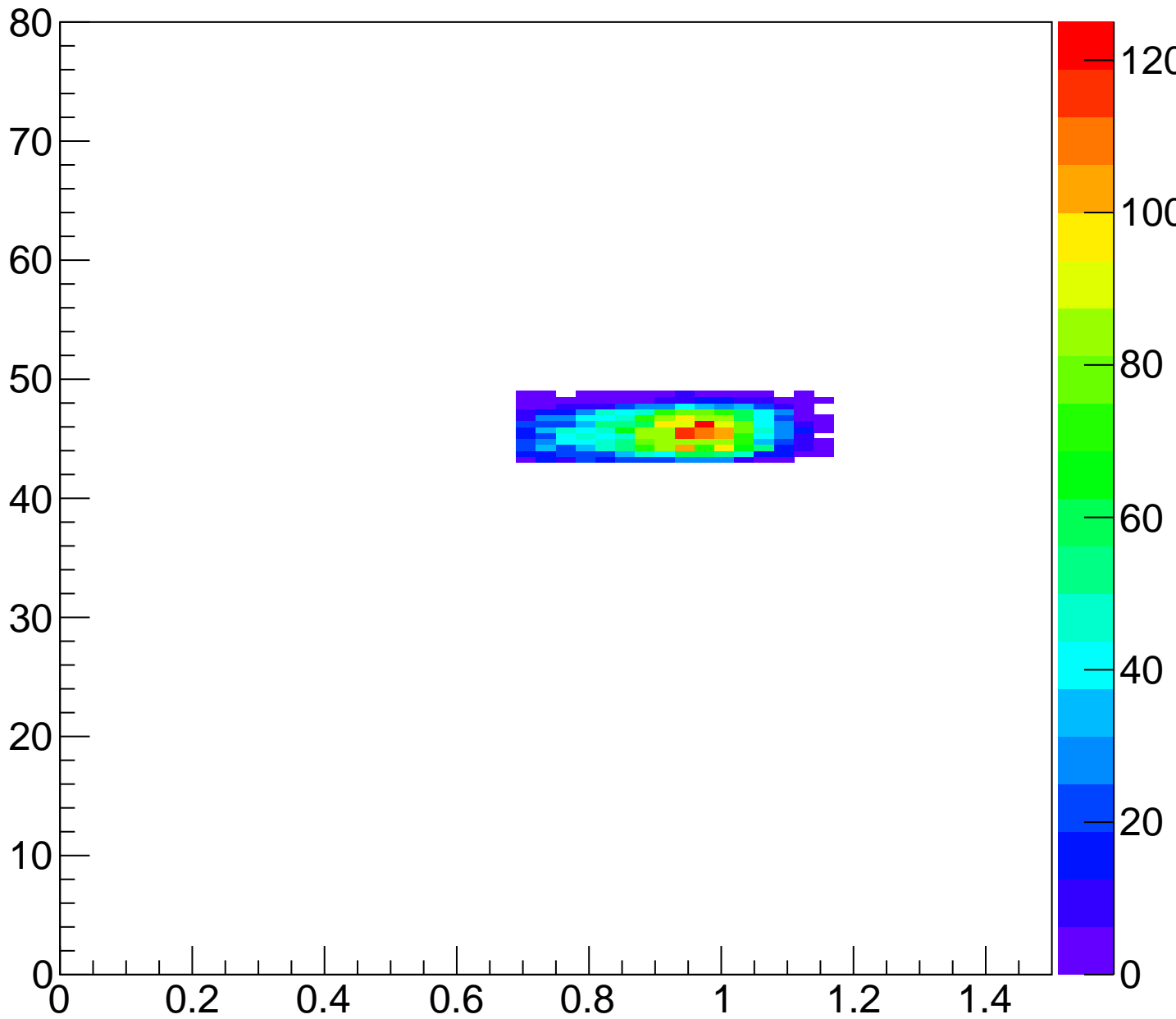




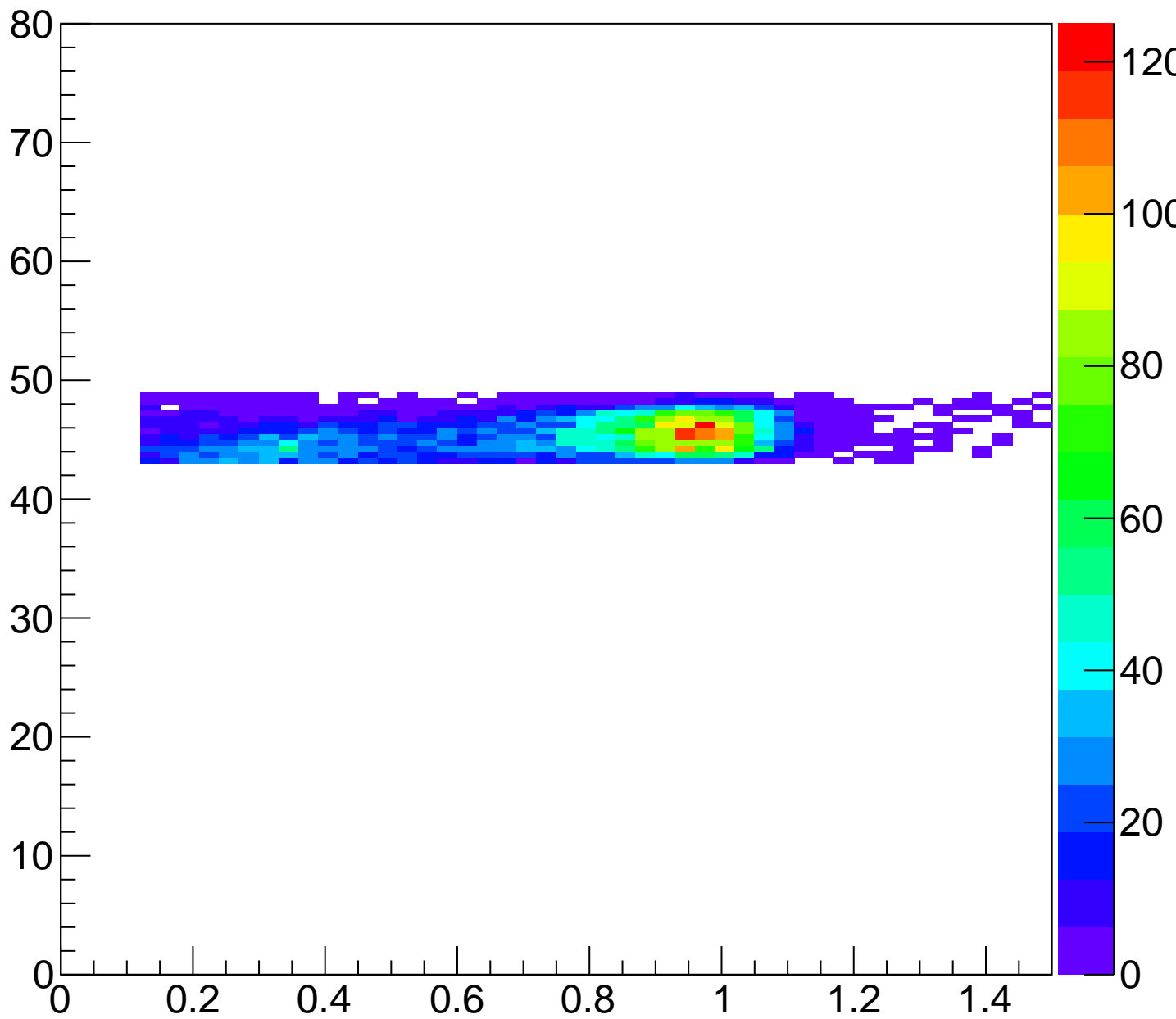
# cluster energy v cluster time - all



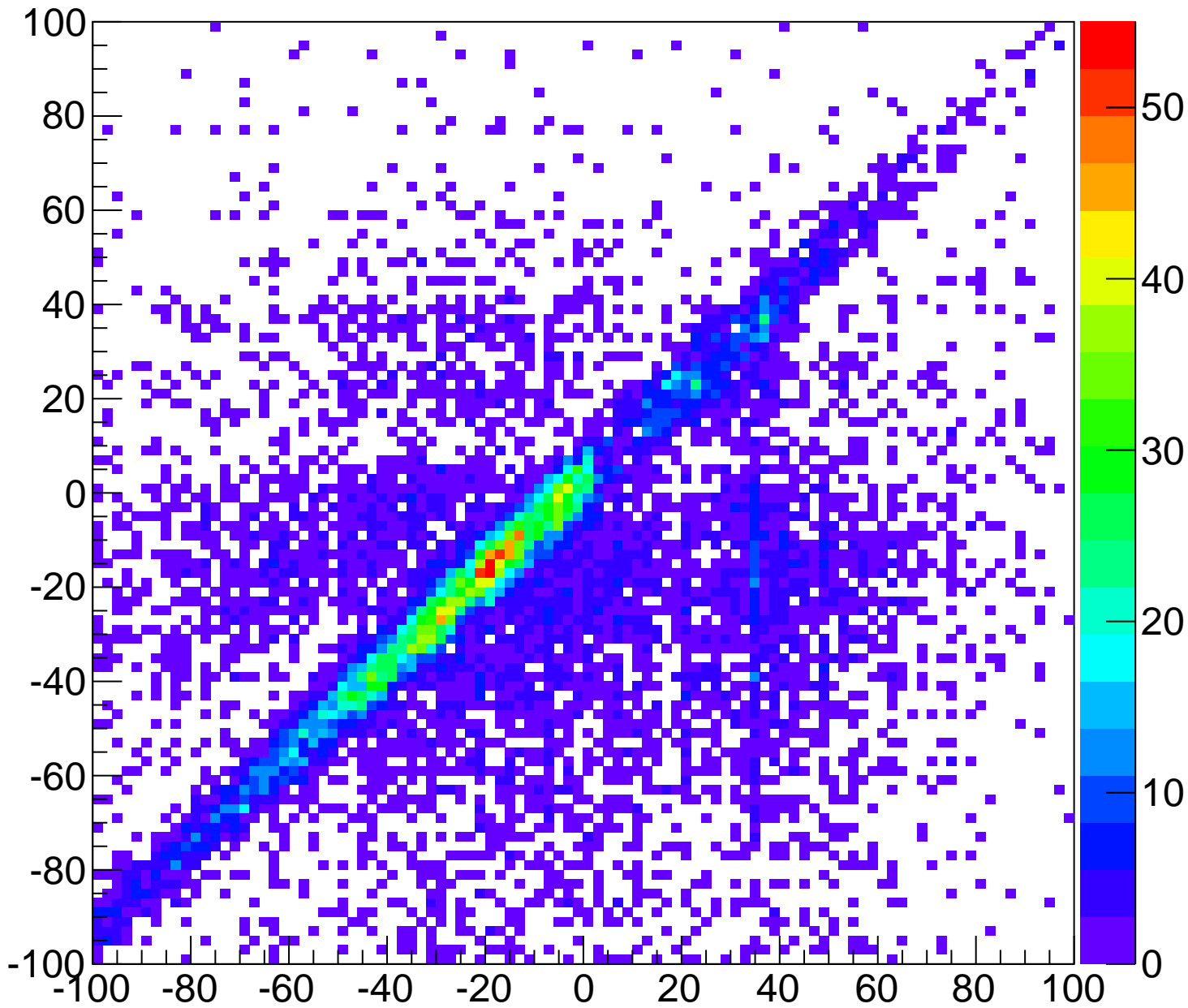
# cluster energy v cluster time - fee



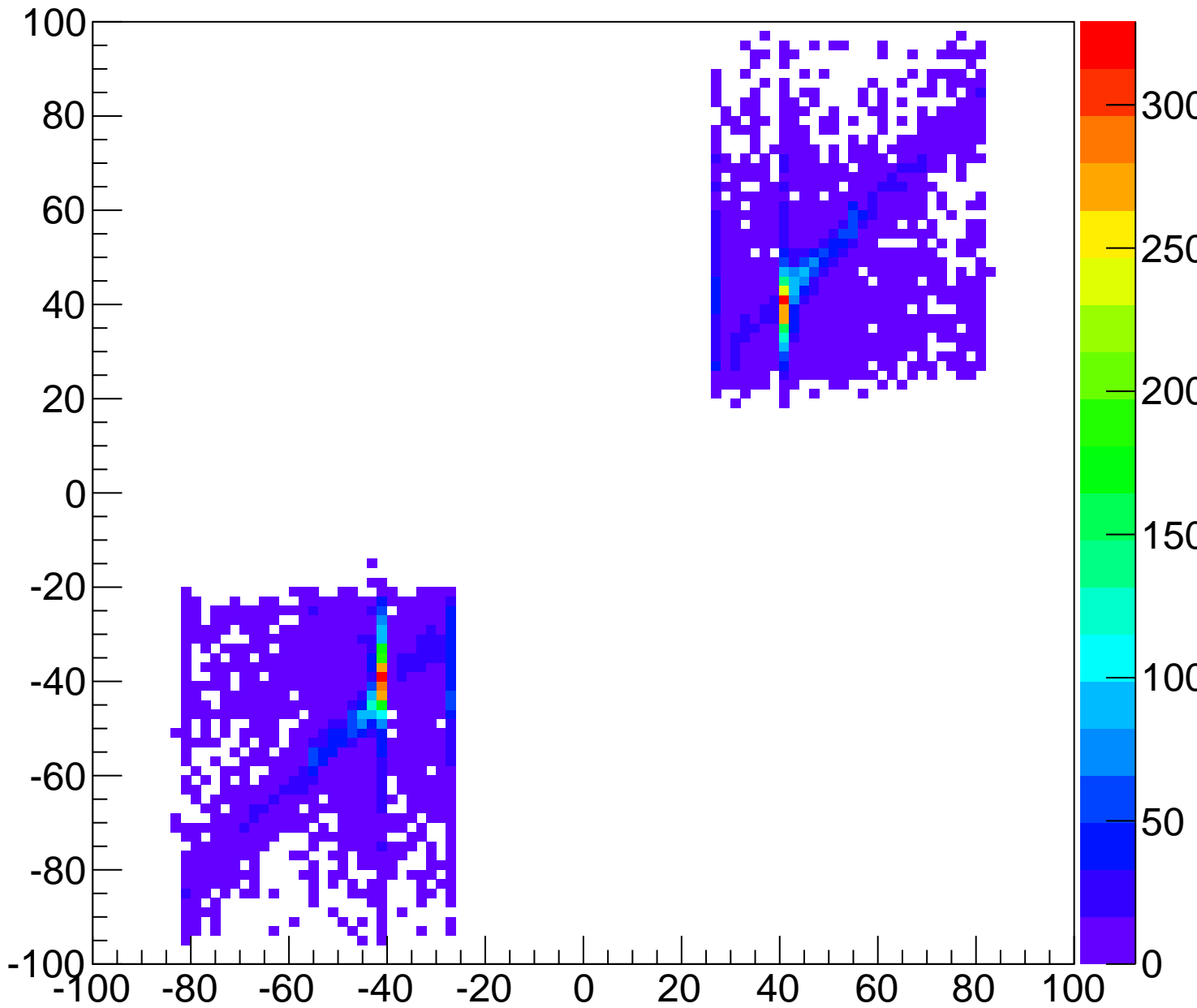
cluster energy v cluster time - pass time cut



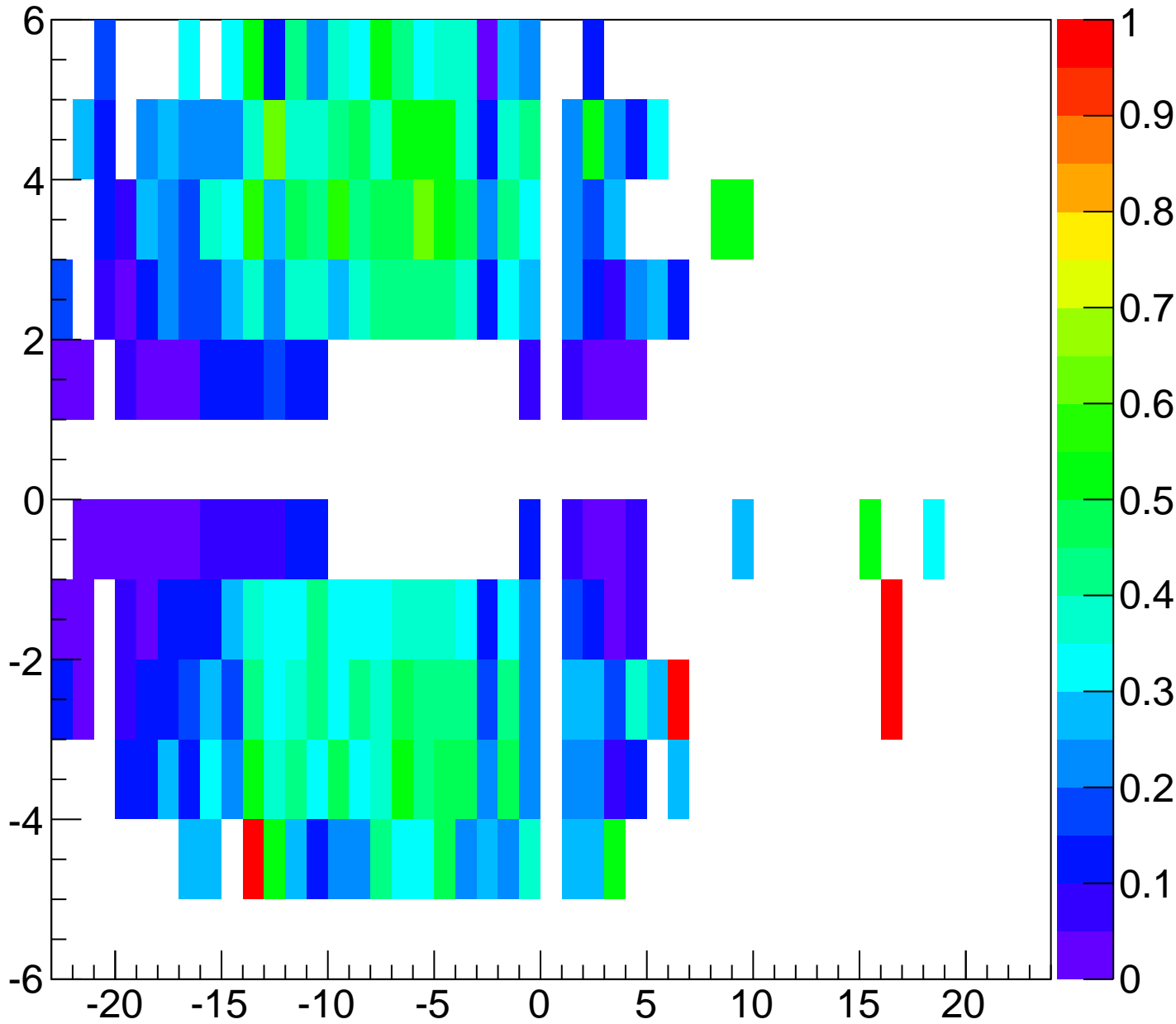
# cluster x v extrapolated track x



# cluster y v extrapolated track y



# tracking efficiency - all



# tracking efficiency - fee

