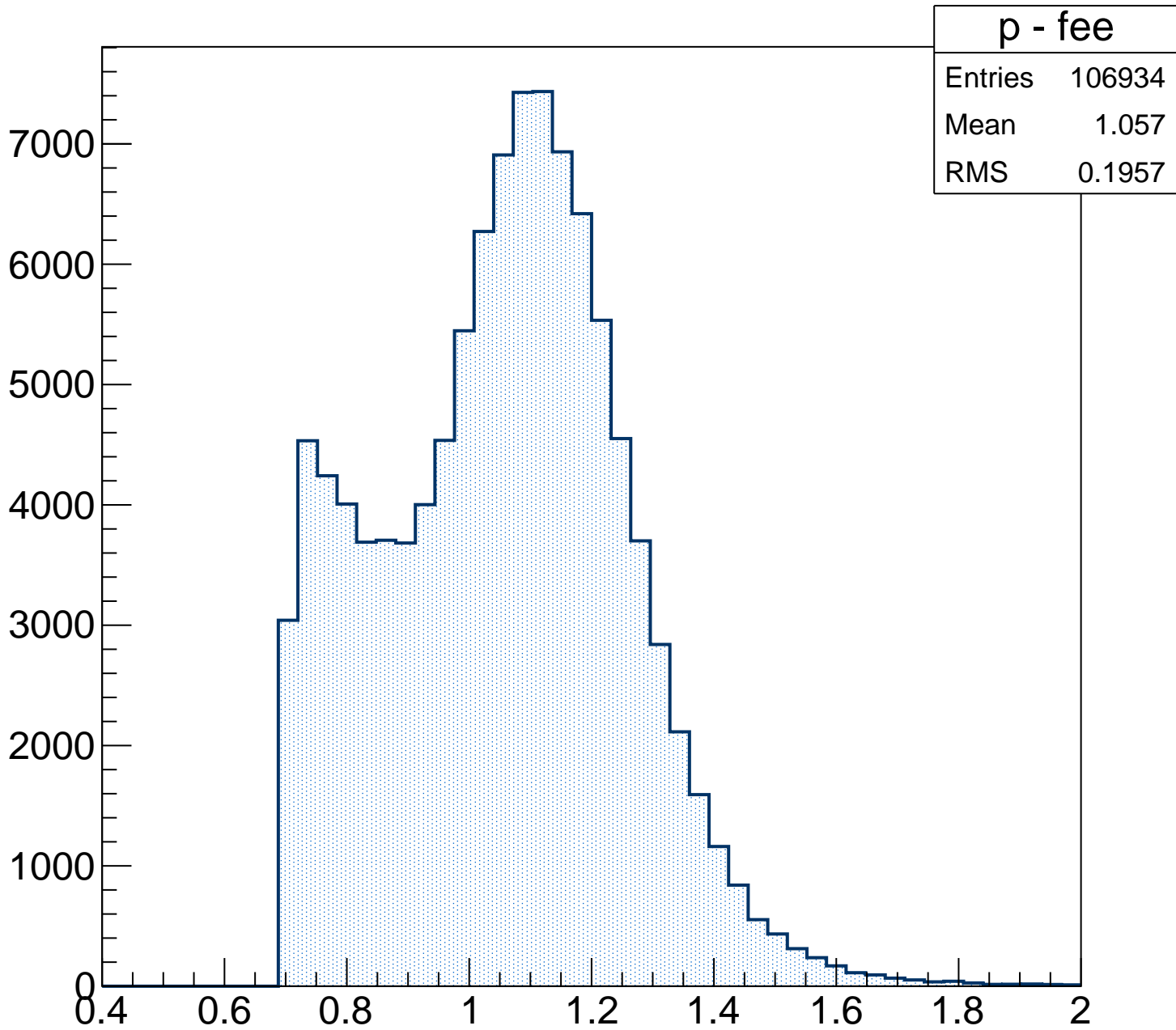
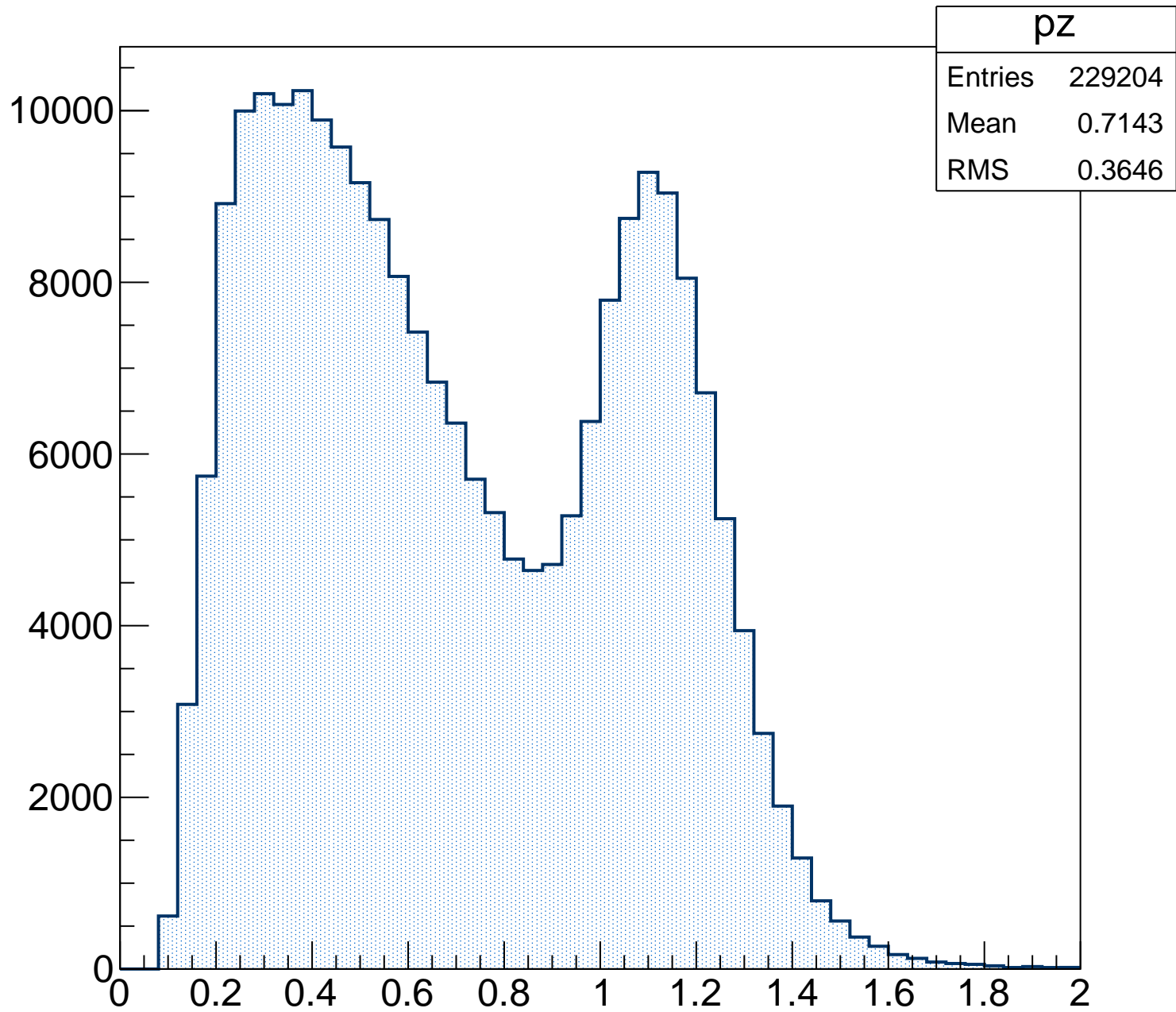


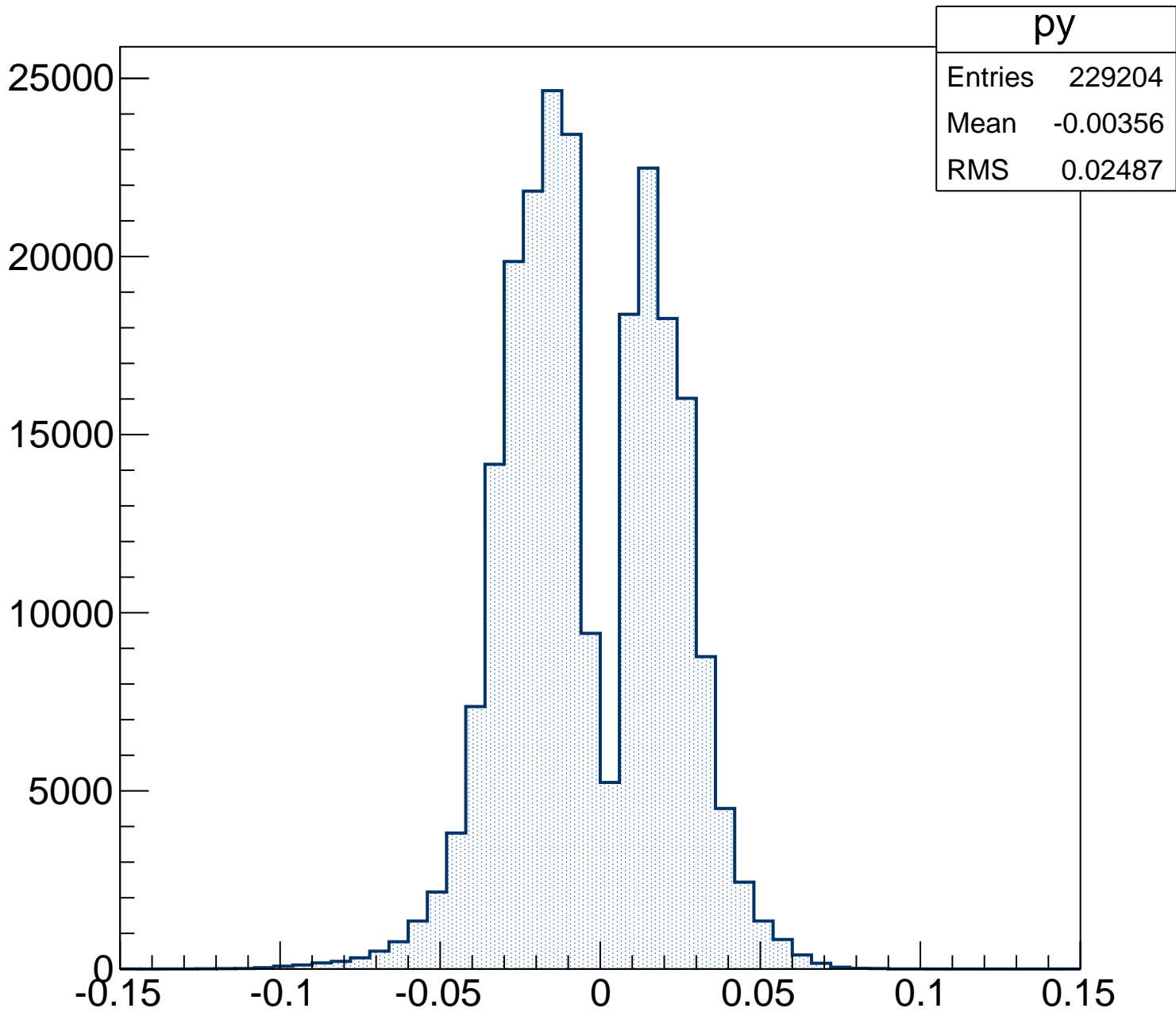
ρ - fee



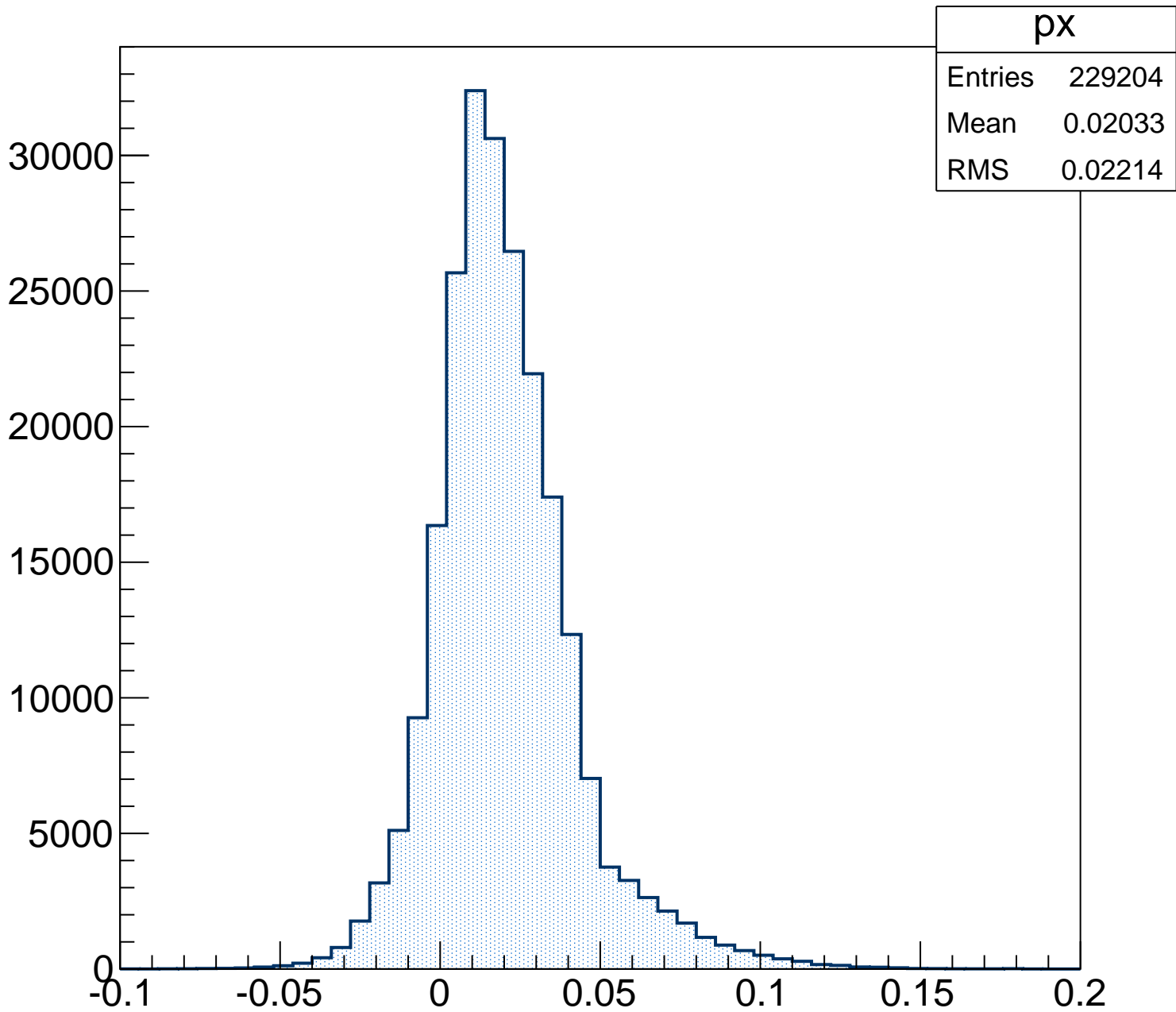
ρz



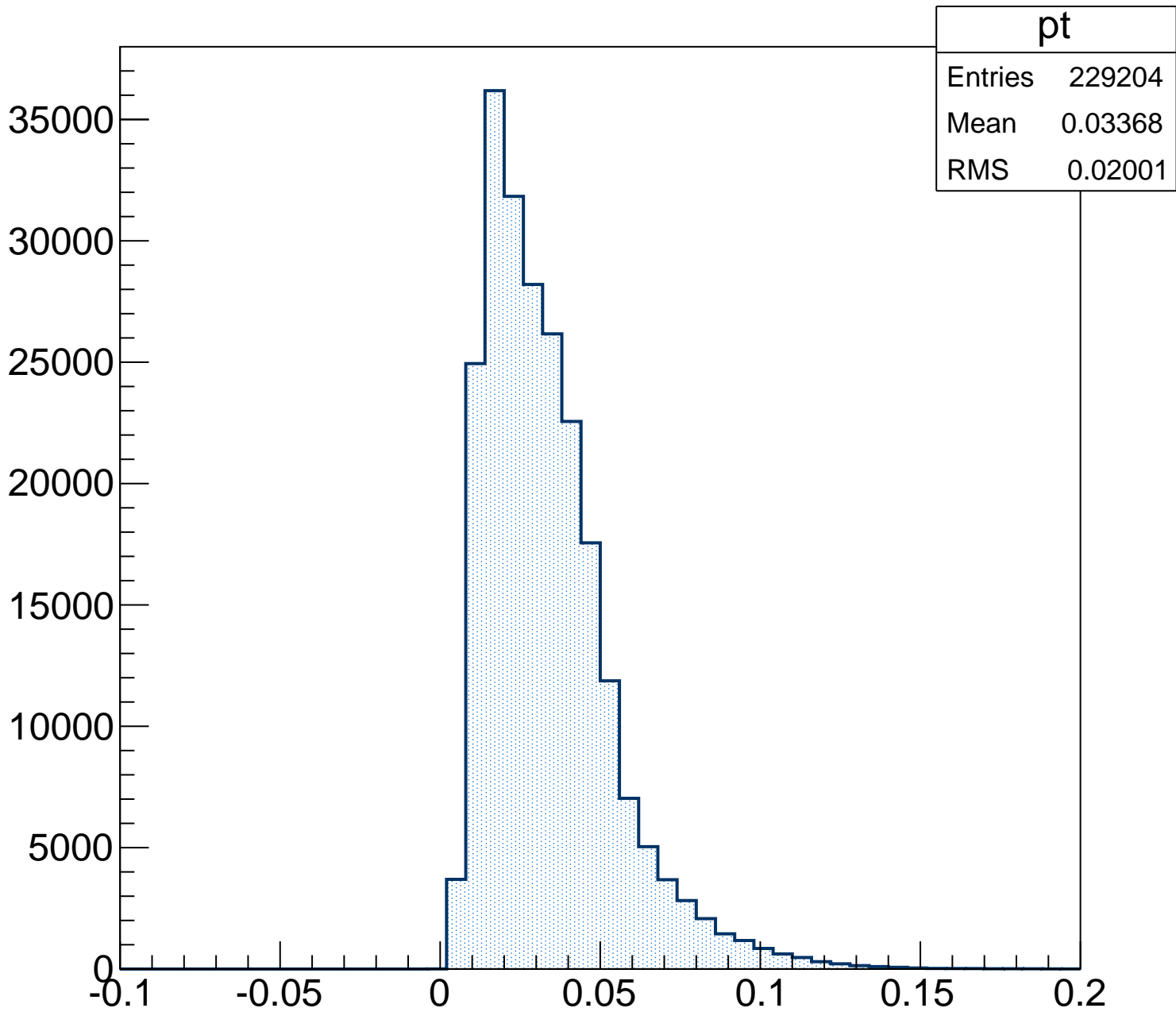
py



ρx

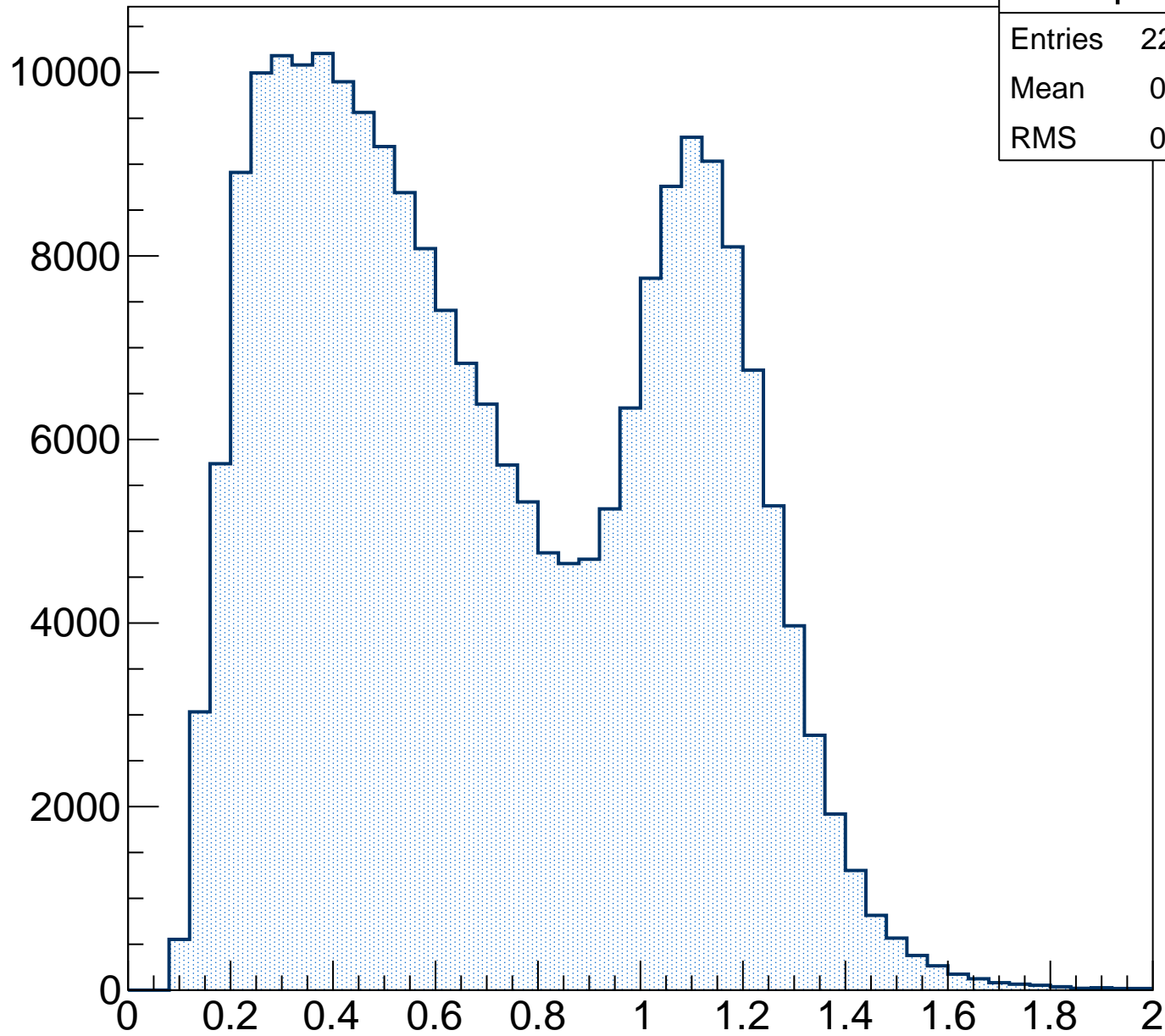


pt

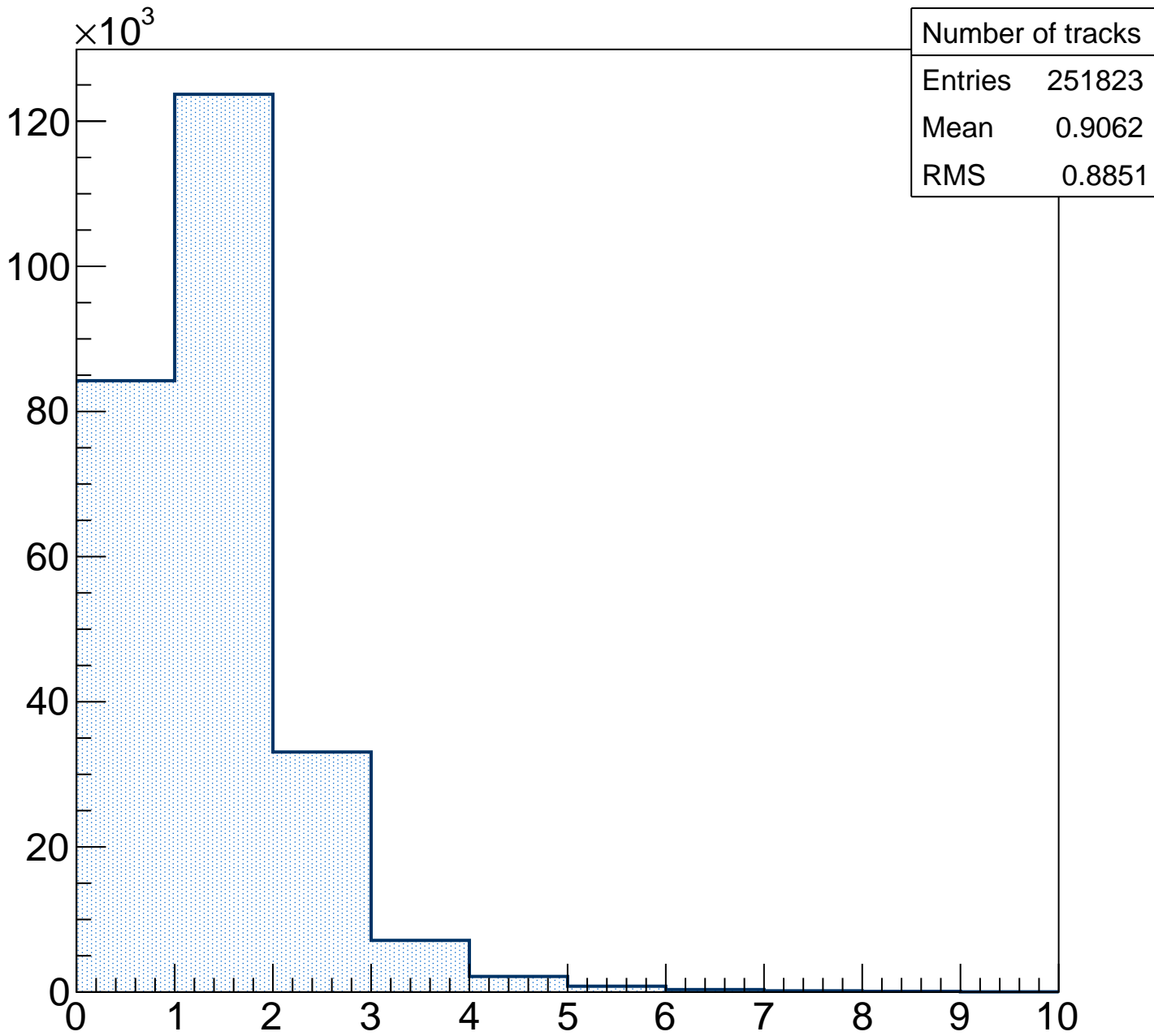


p

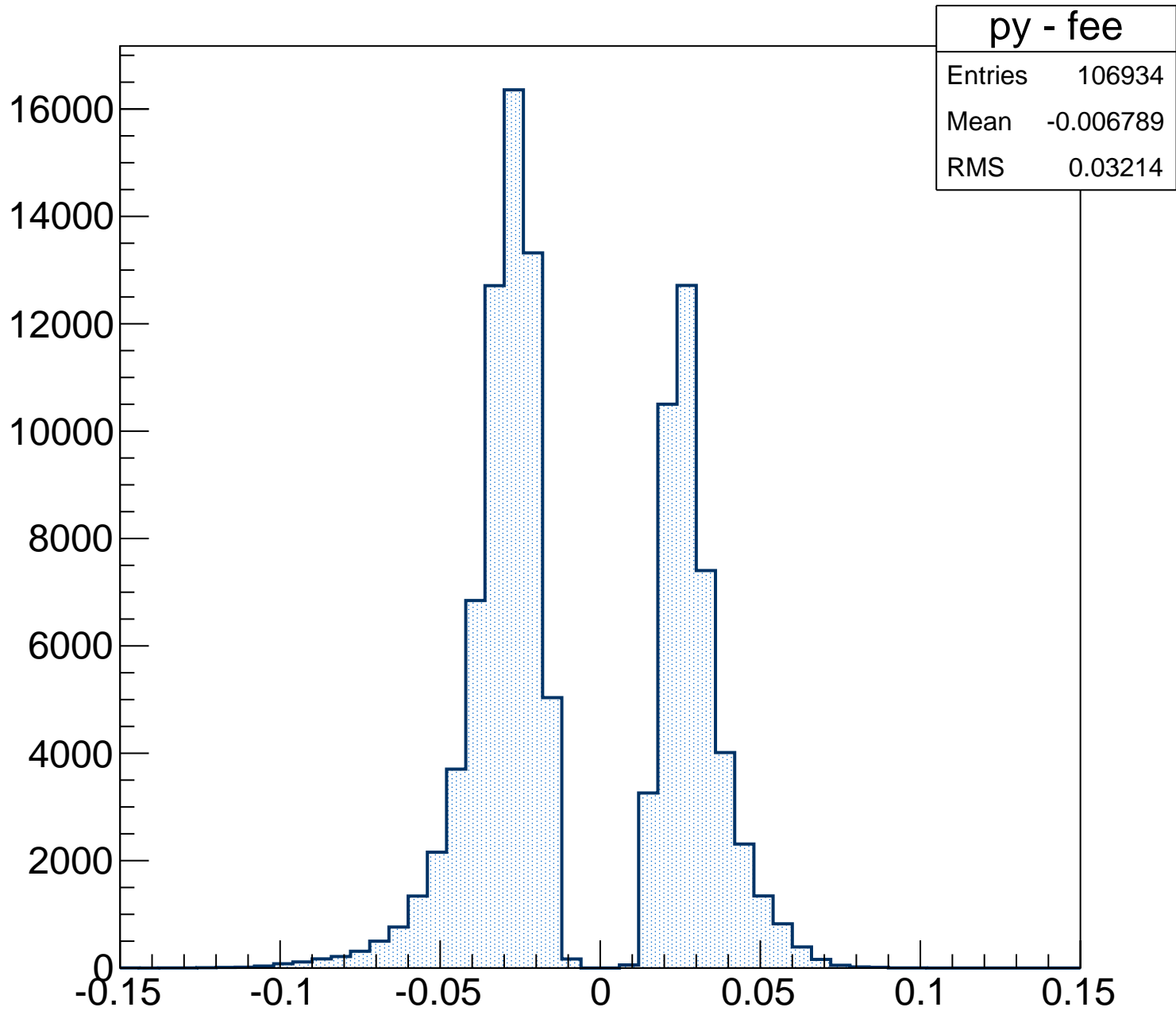
p	
Entries	229204
Mean	0.7153
RMS	0.3648



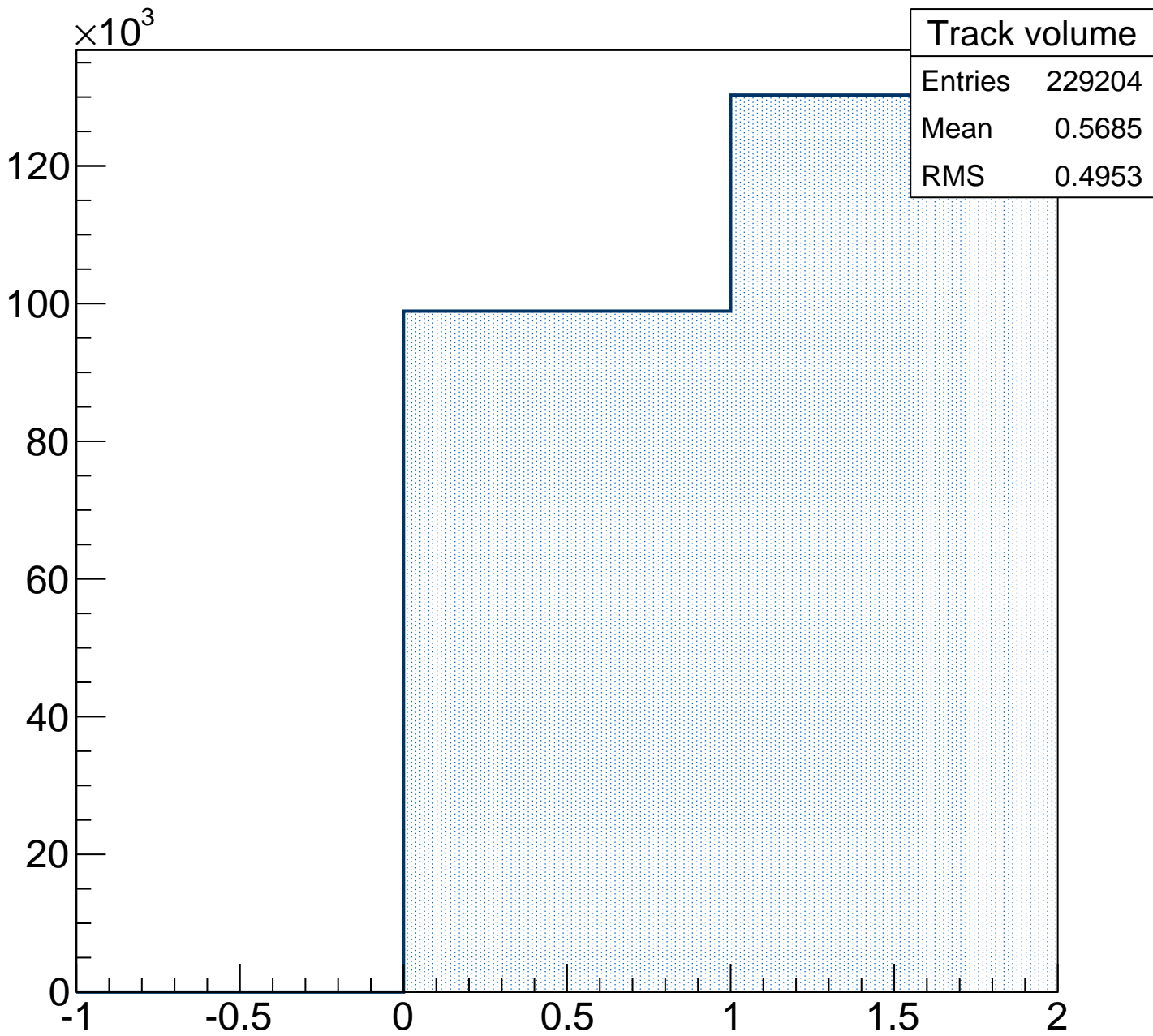
Number of tracks



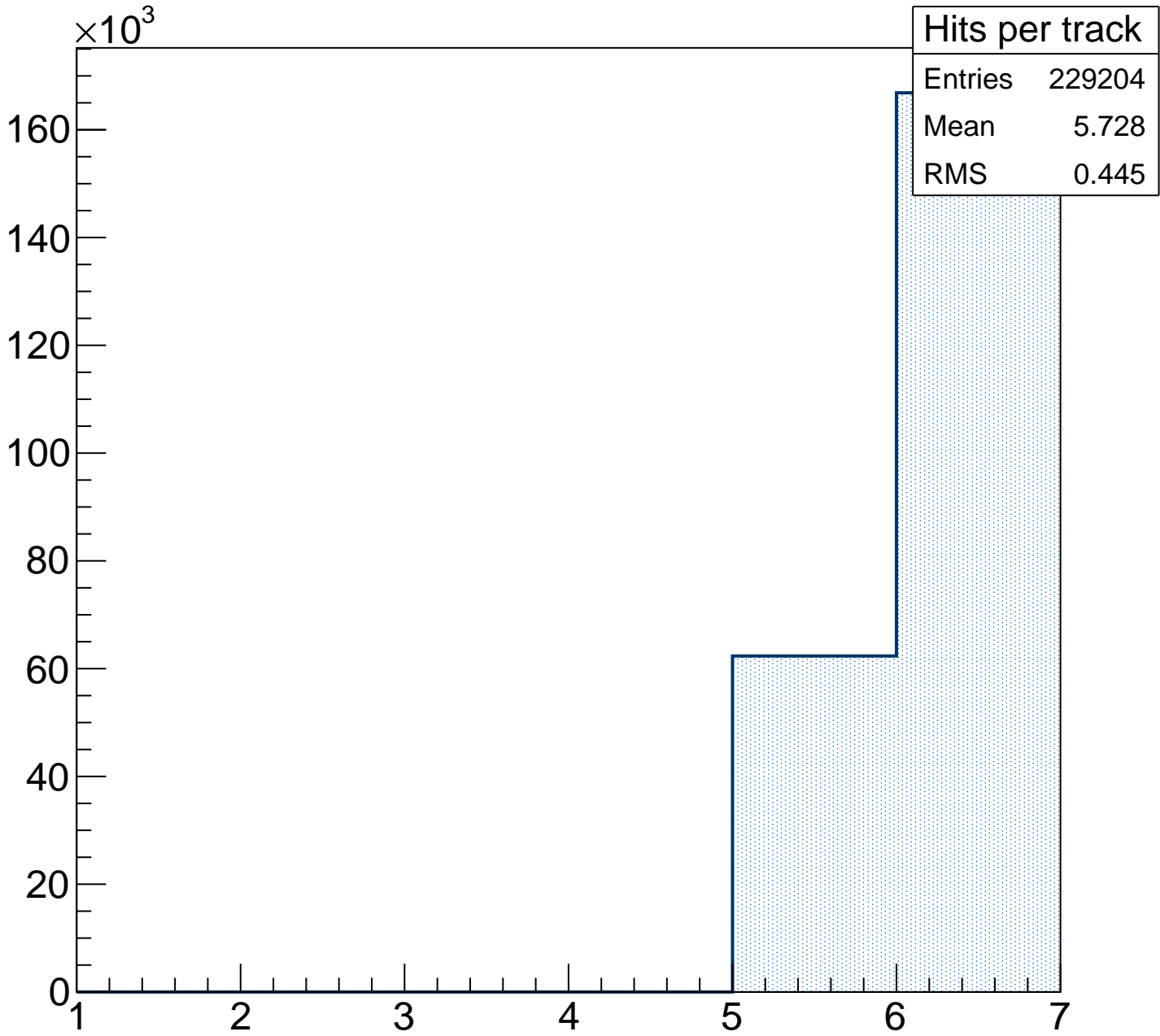
py - fee



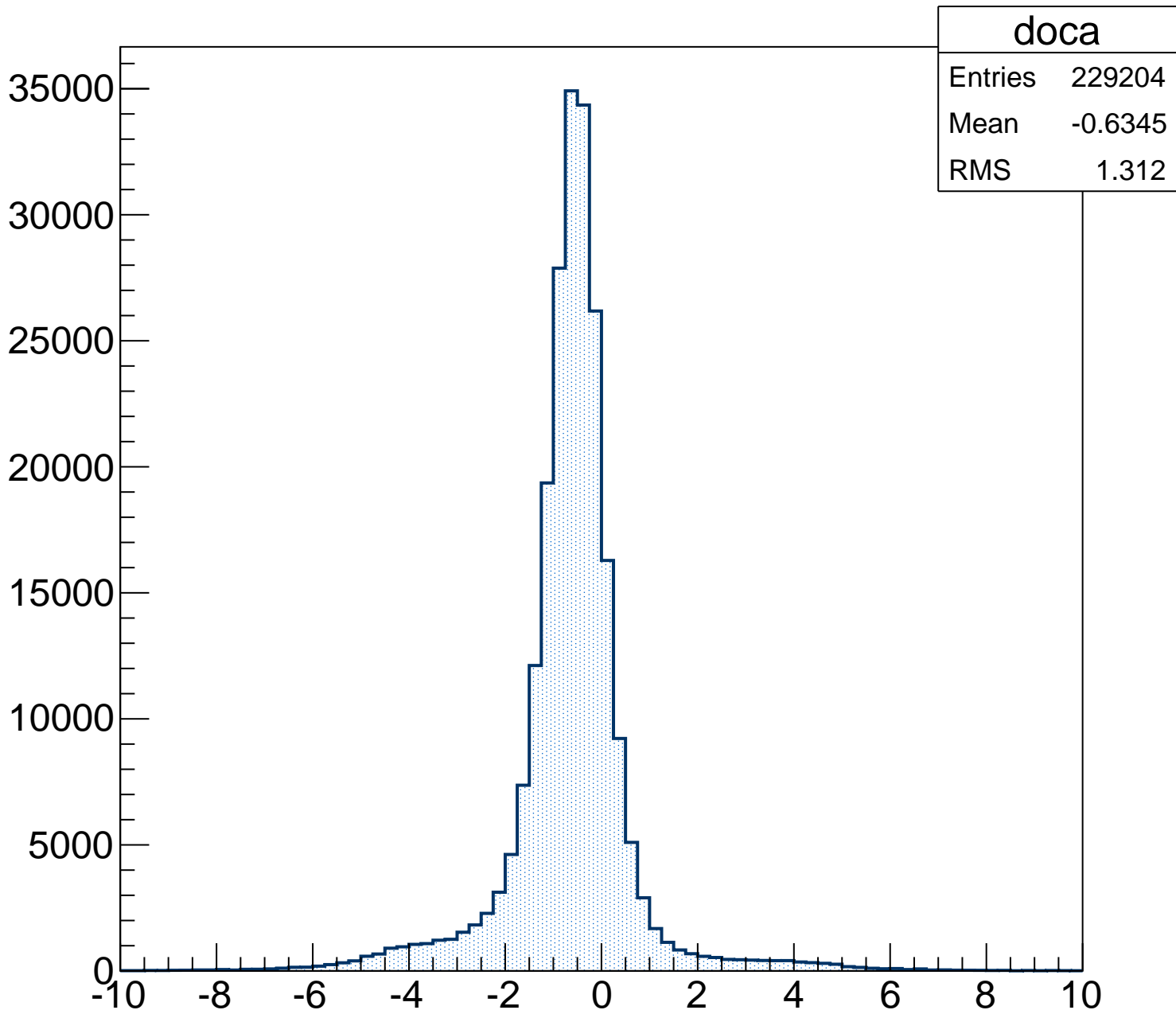
Track volume



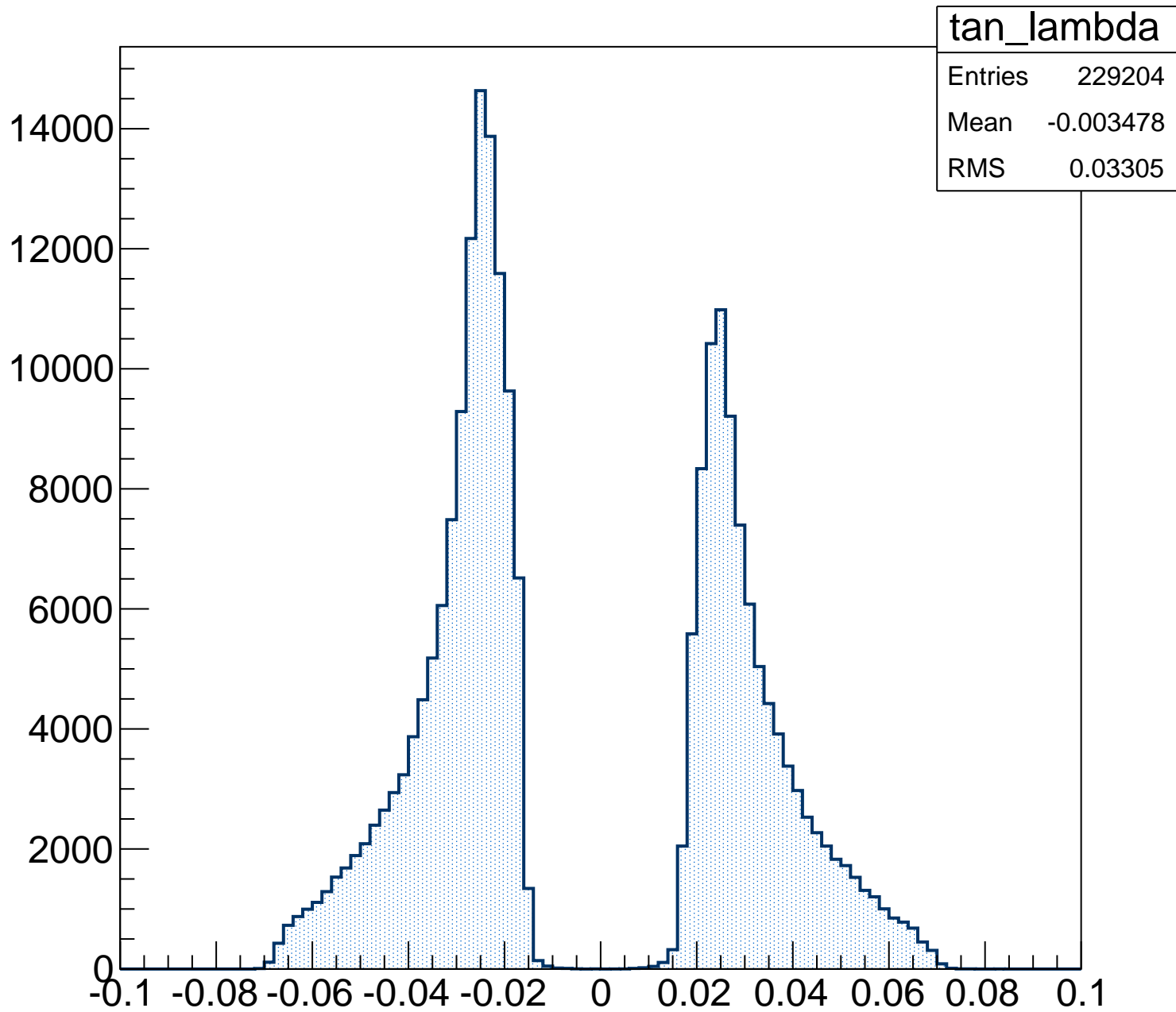
Hits per track



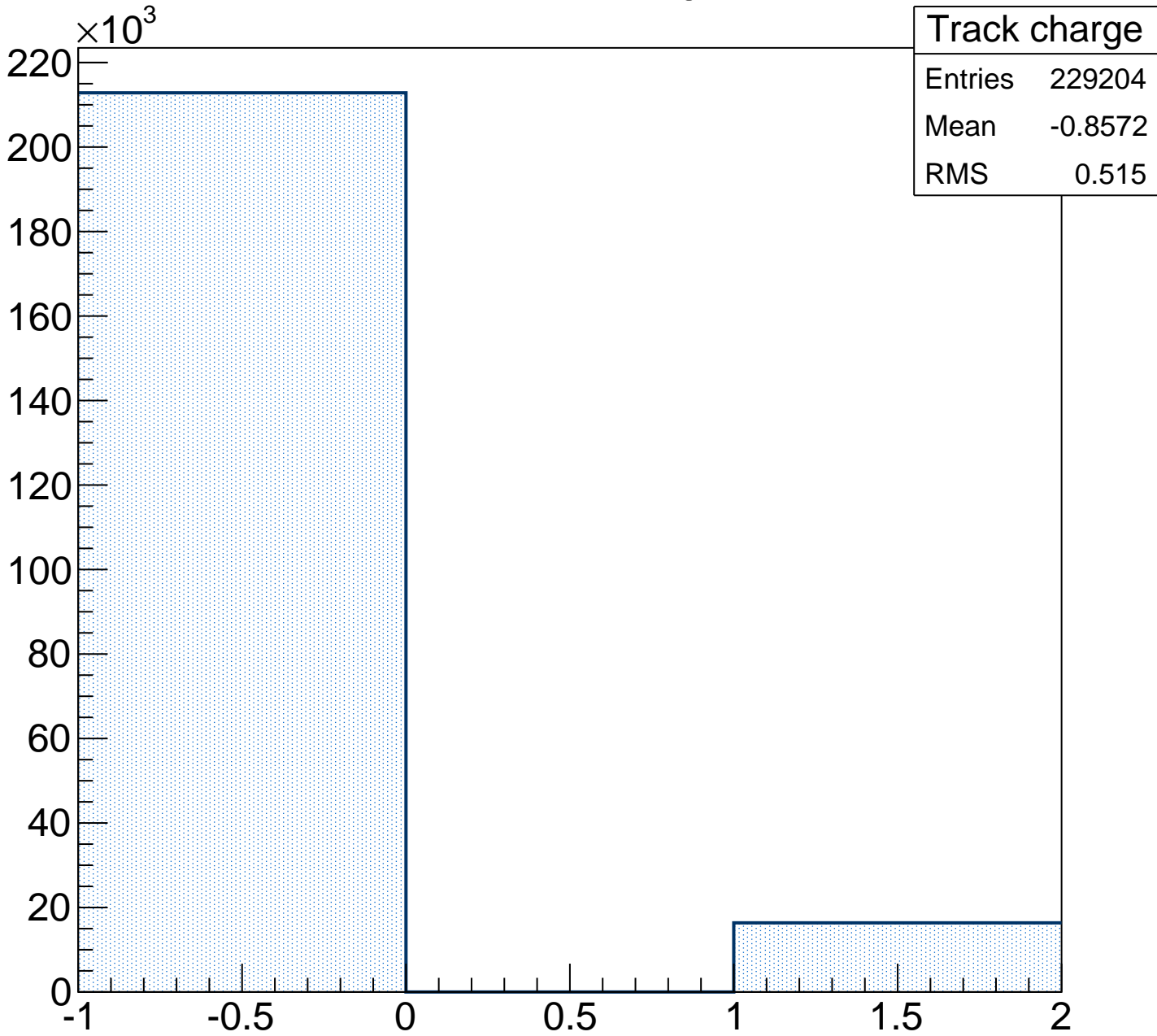
doca



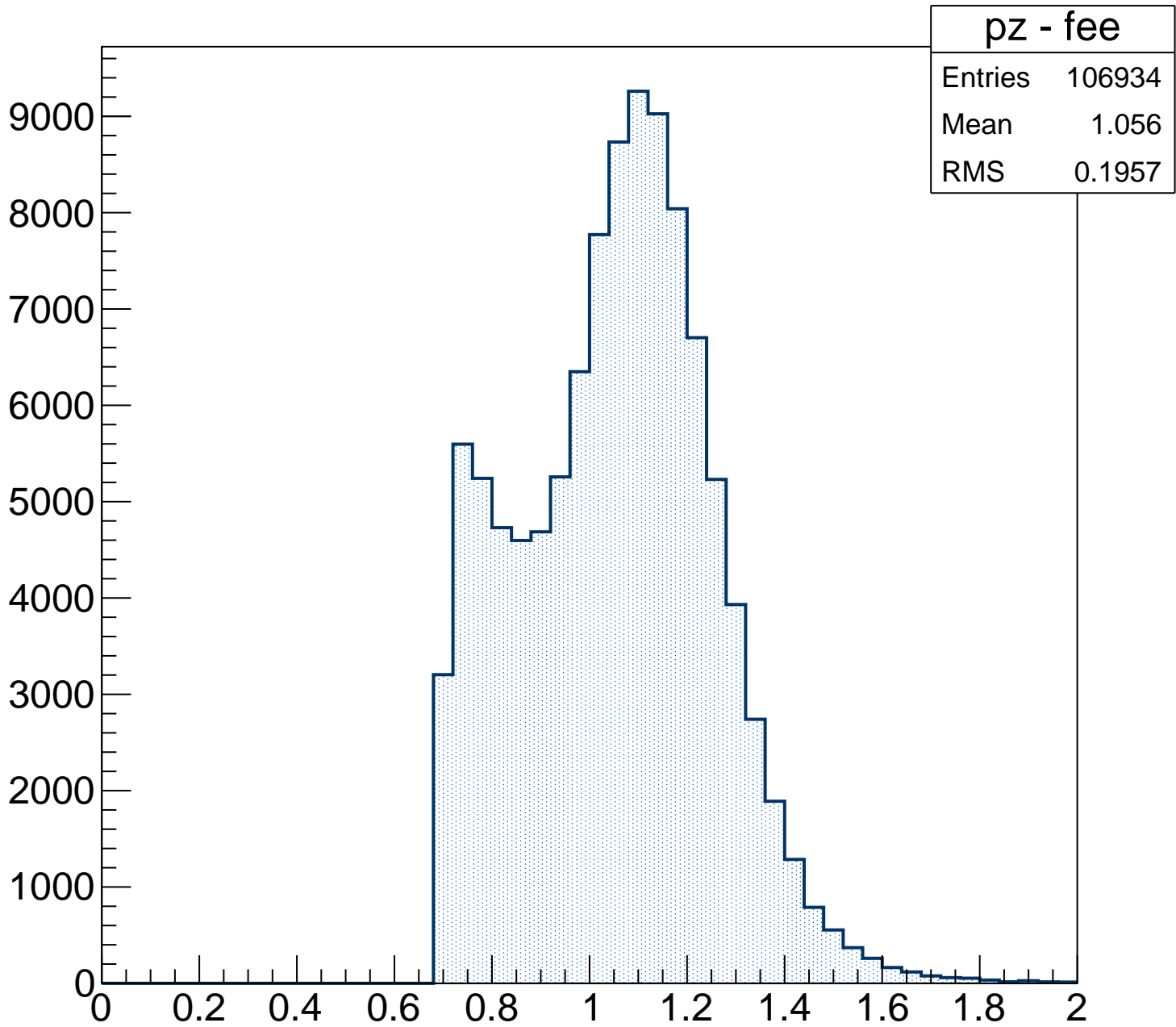
tan_lambda



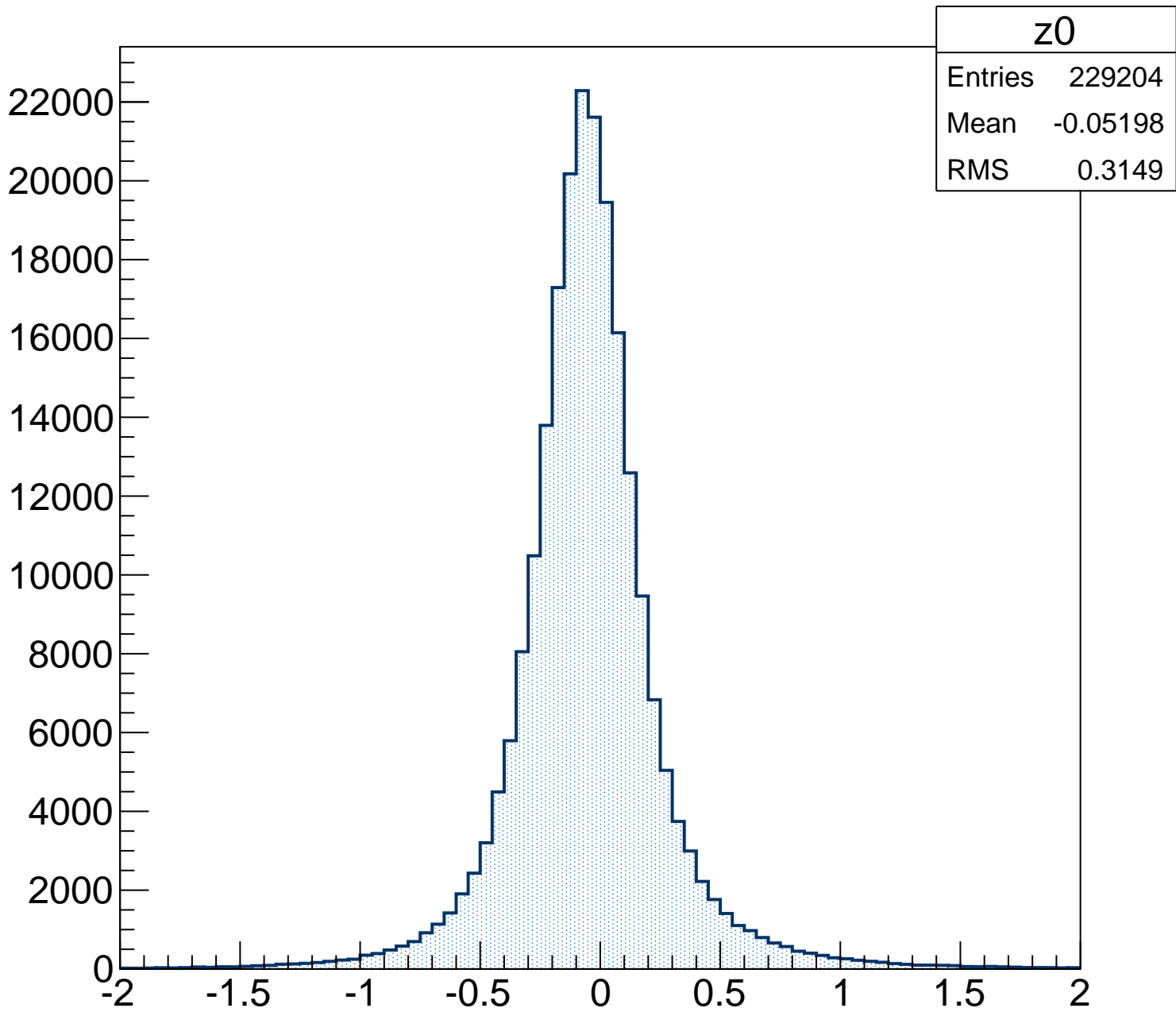
Track charge



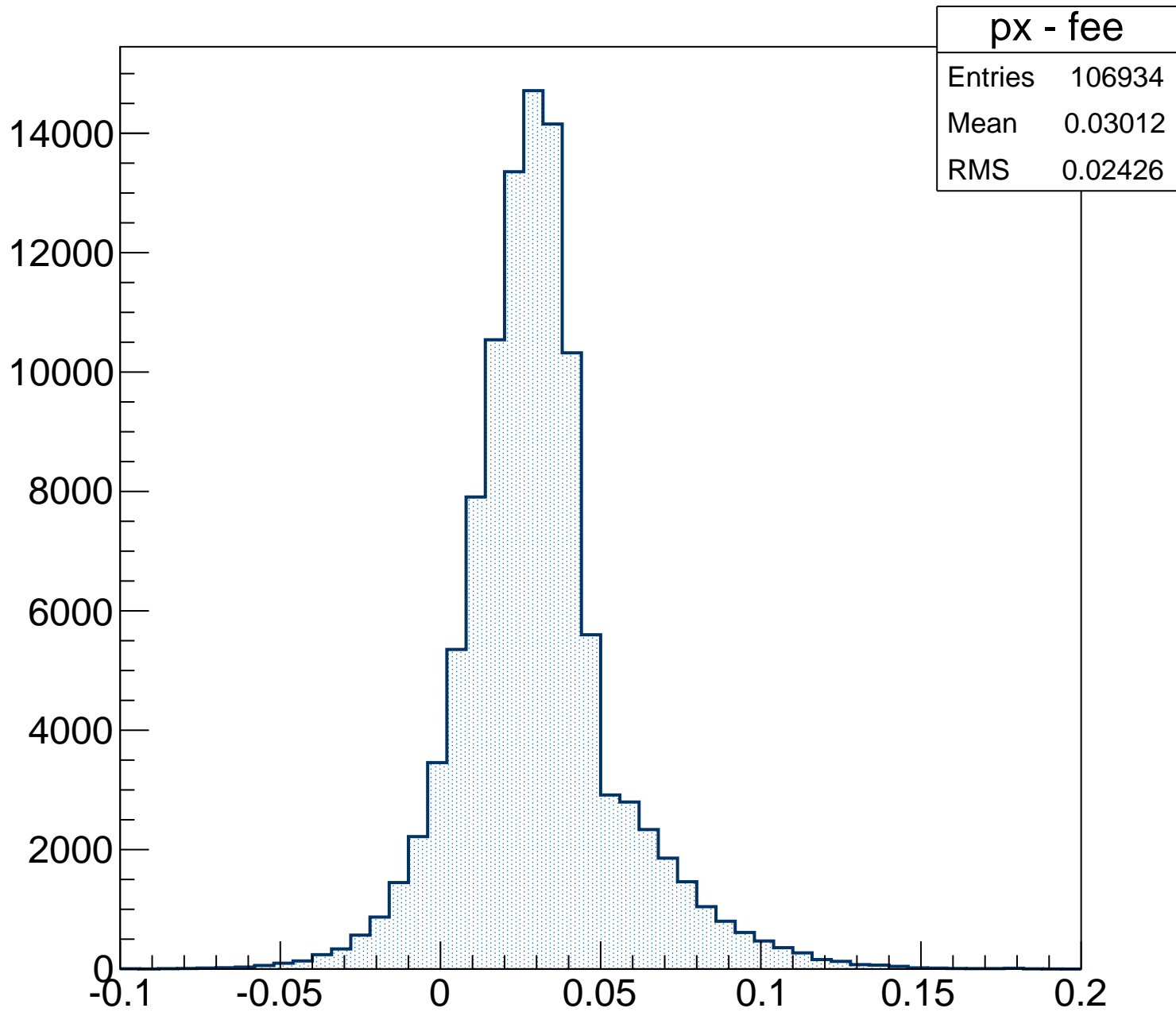
pz - fee



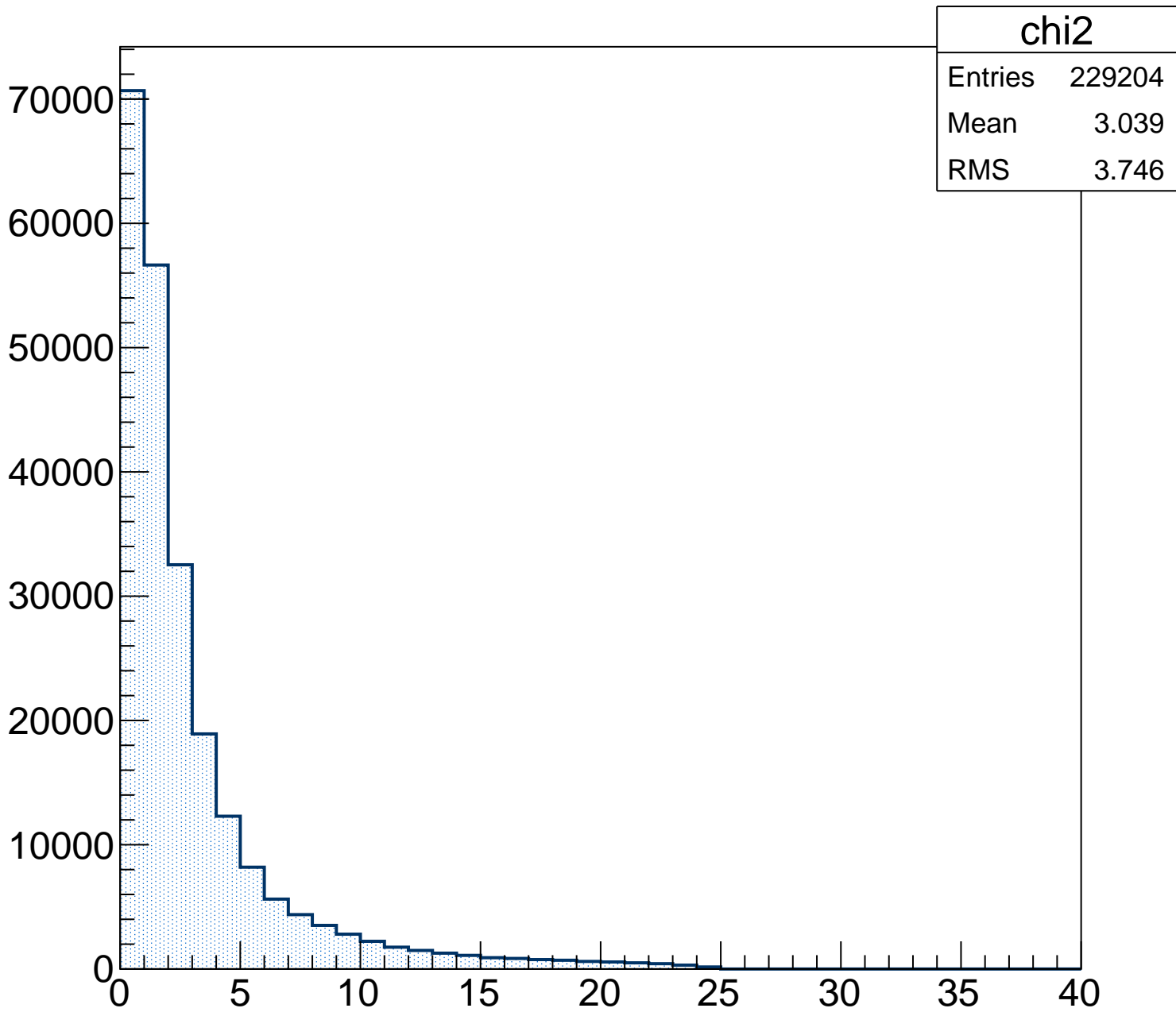
z0



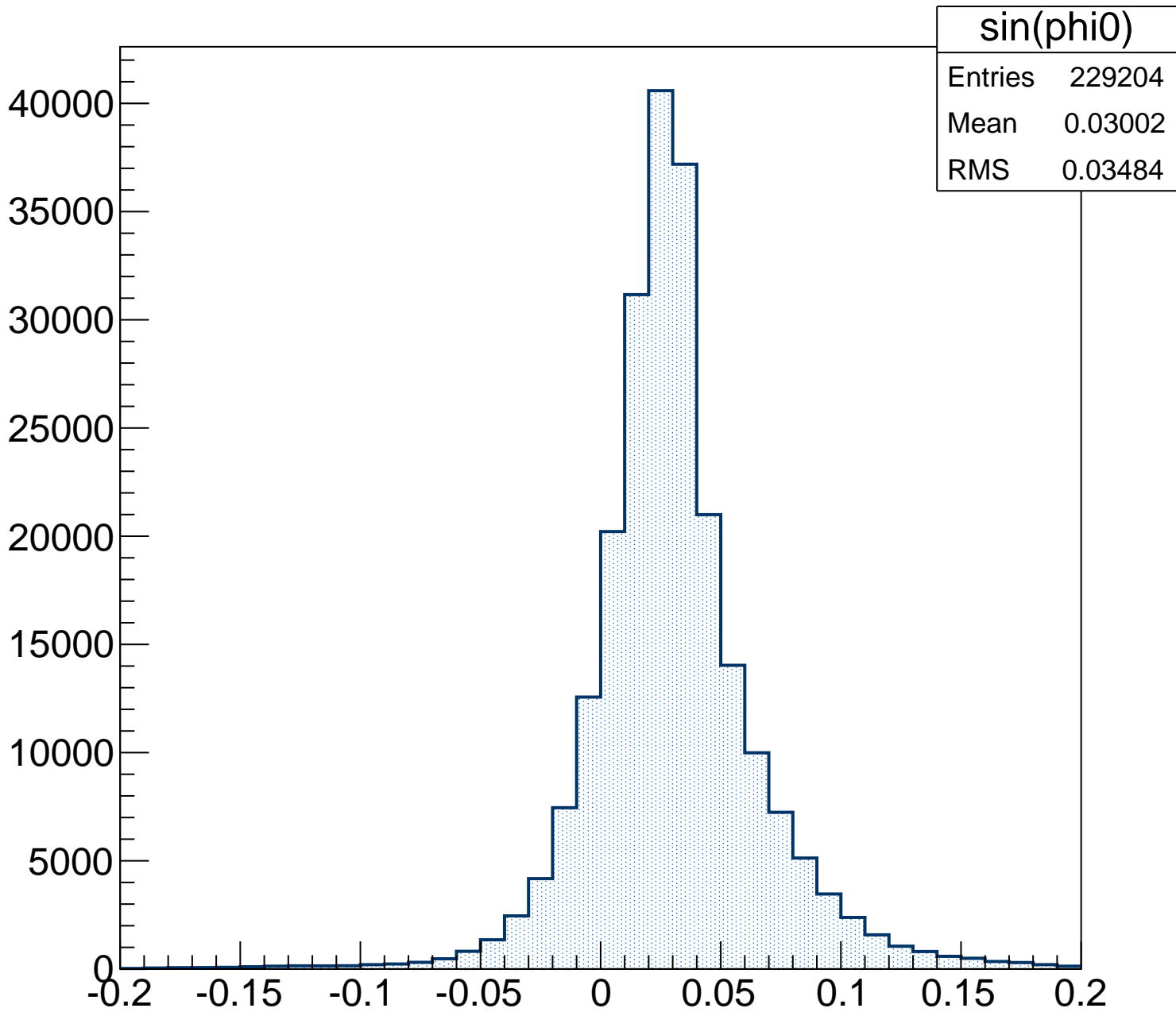
px - fee



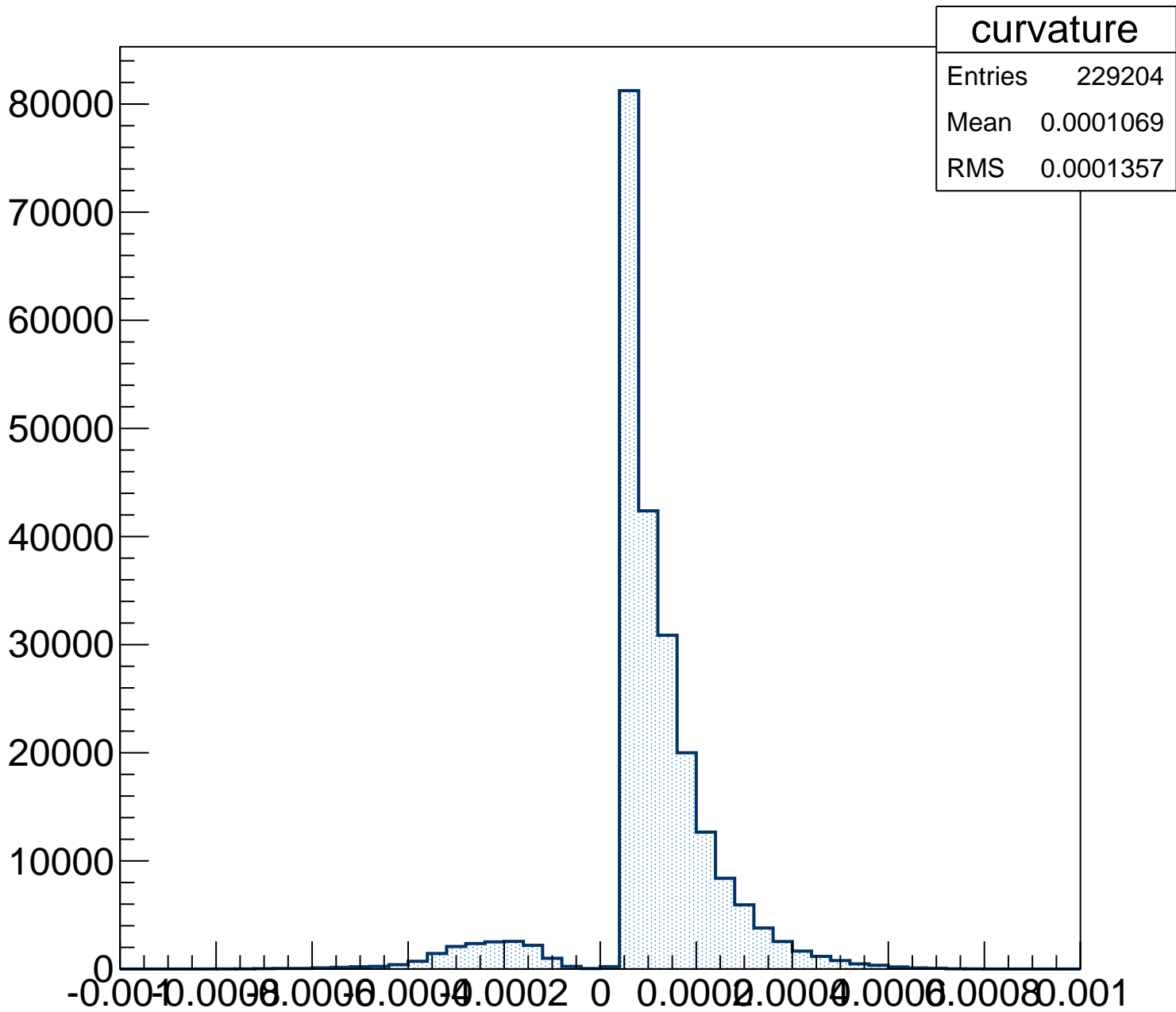
chi2



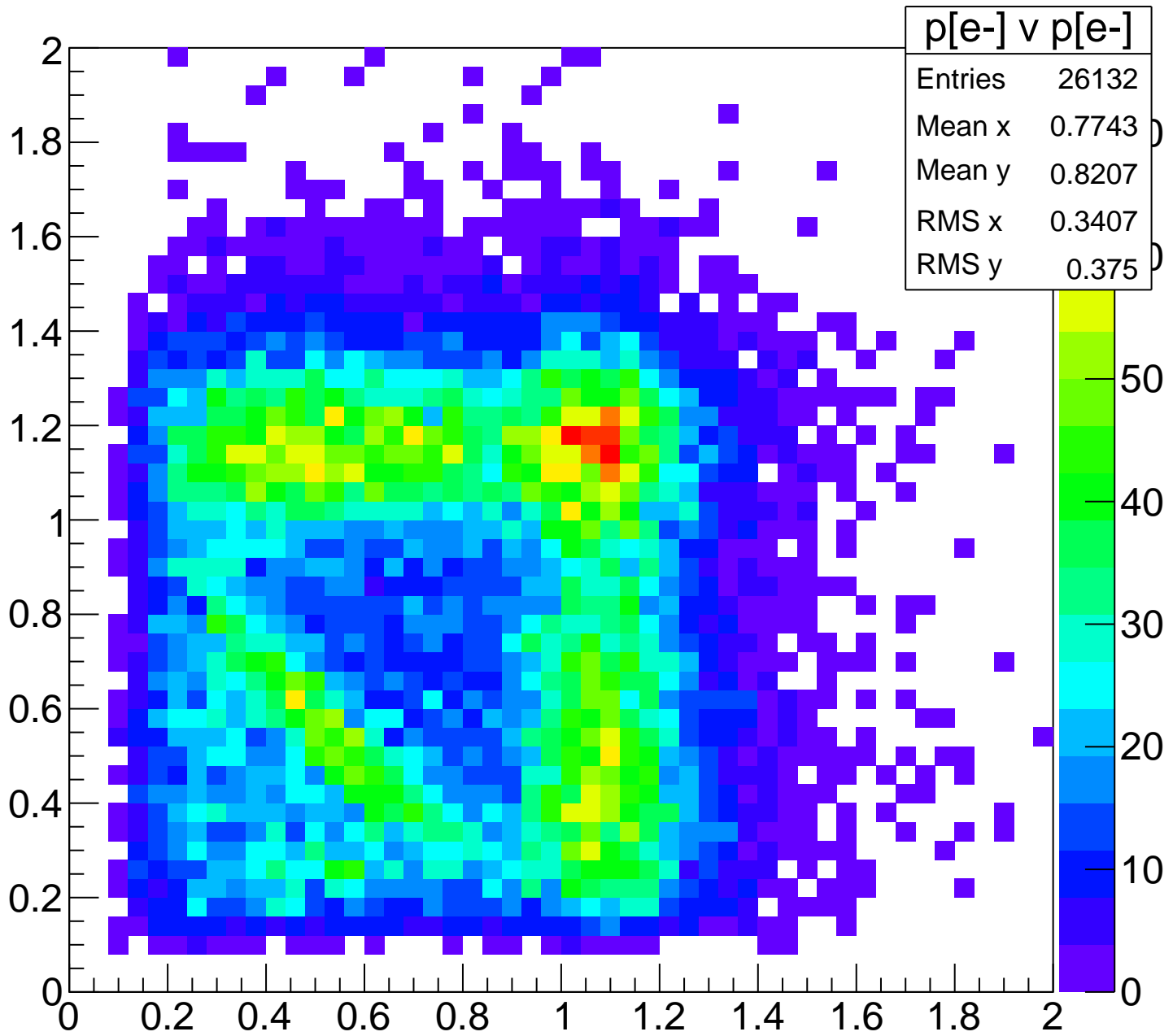
sin(phi0)



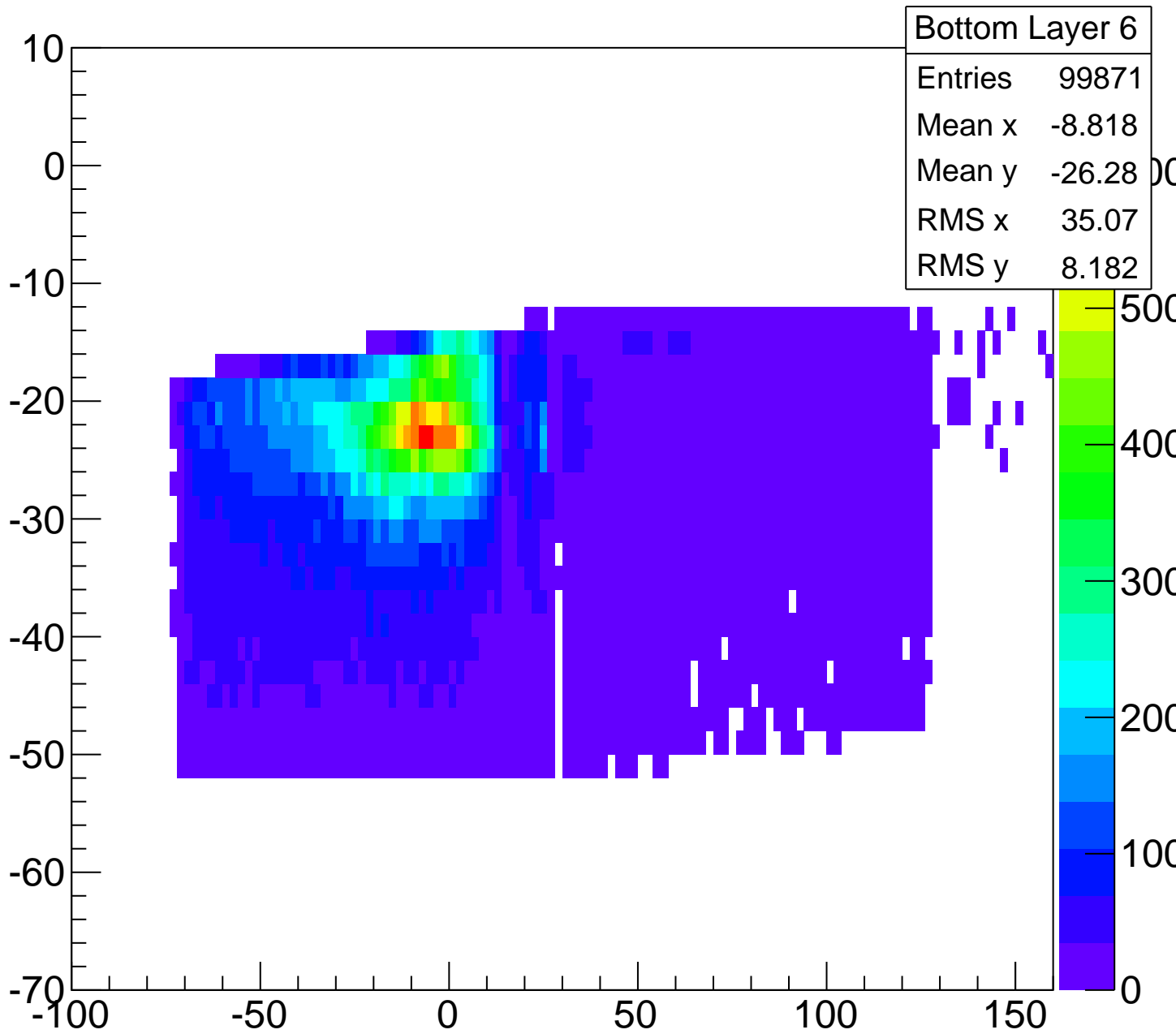
curvature



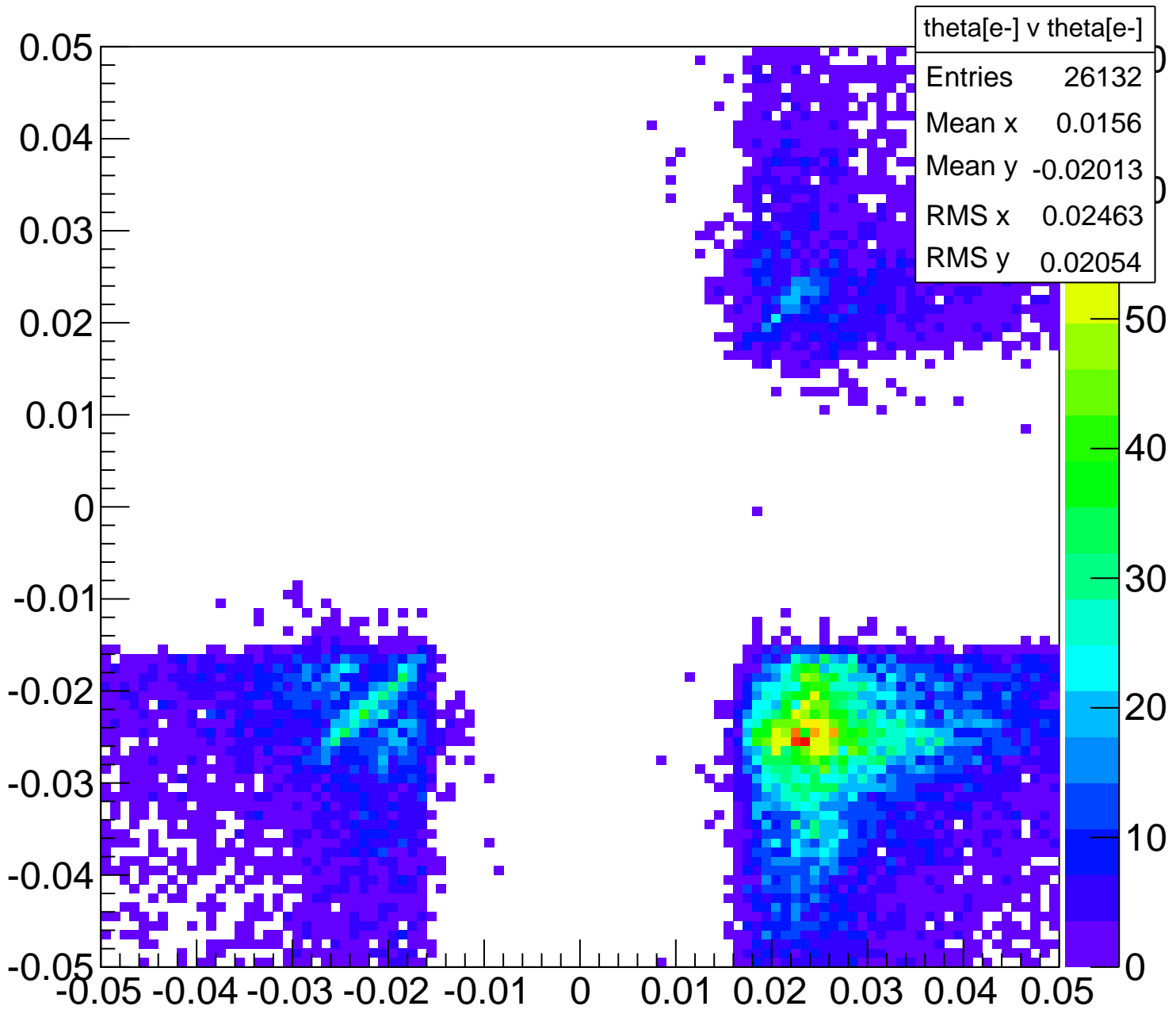
$p[e^-] \text{ v } p[e^-]$



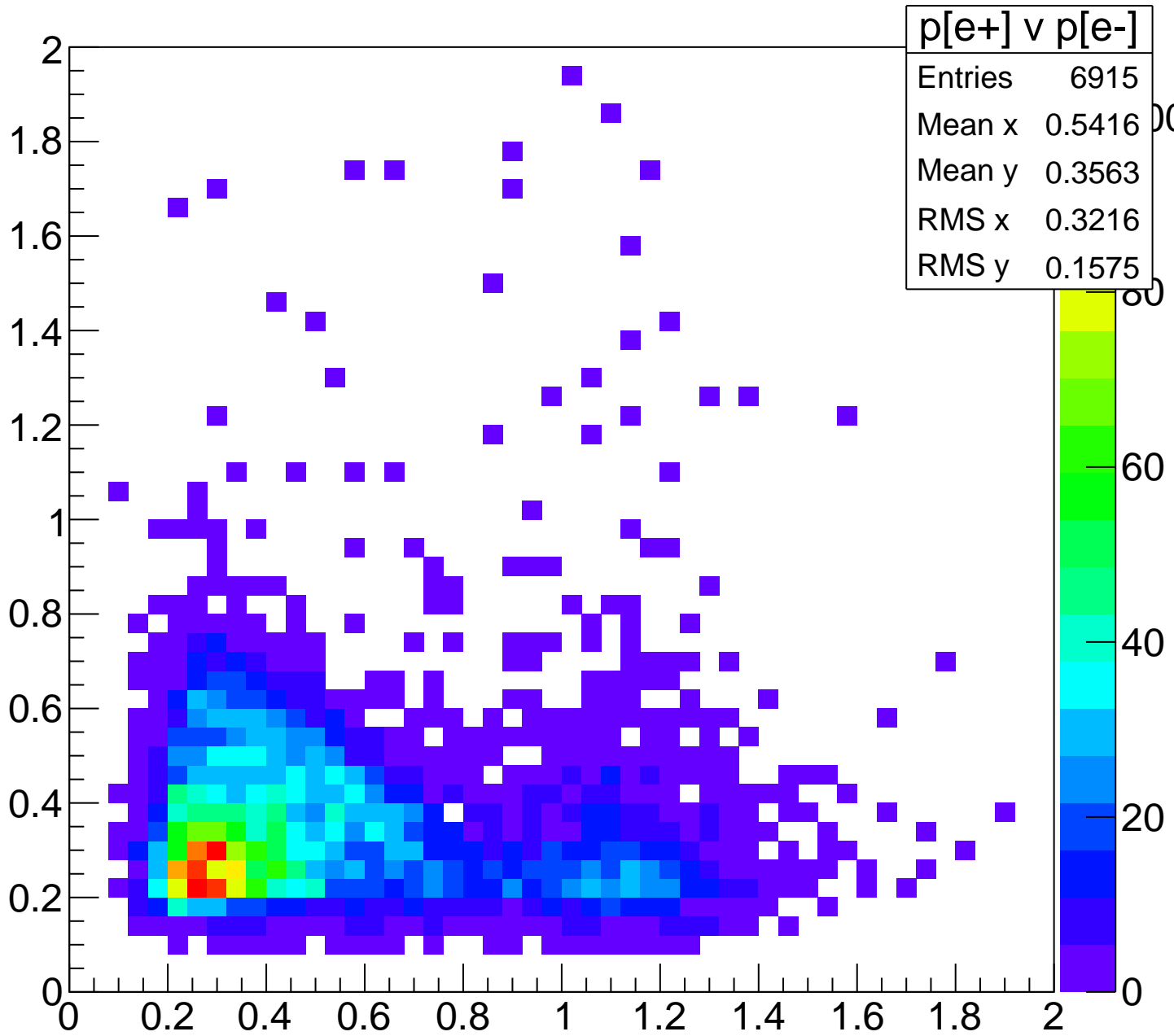
Bottom Layer 6



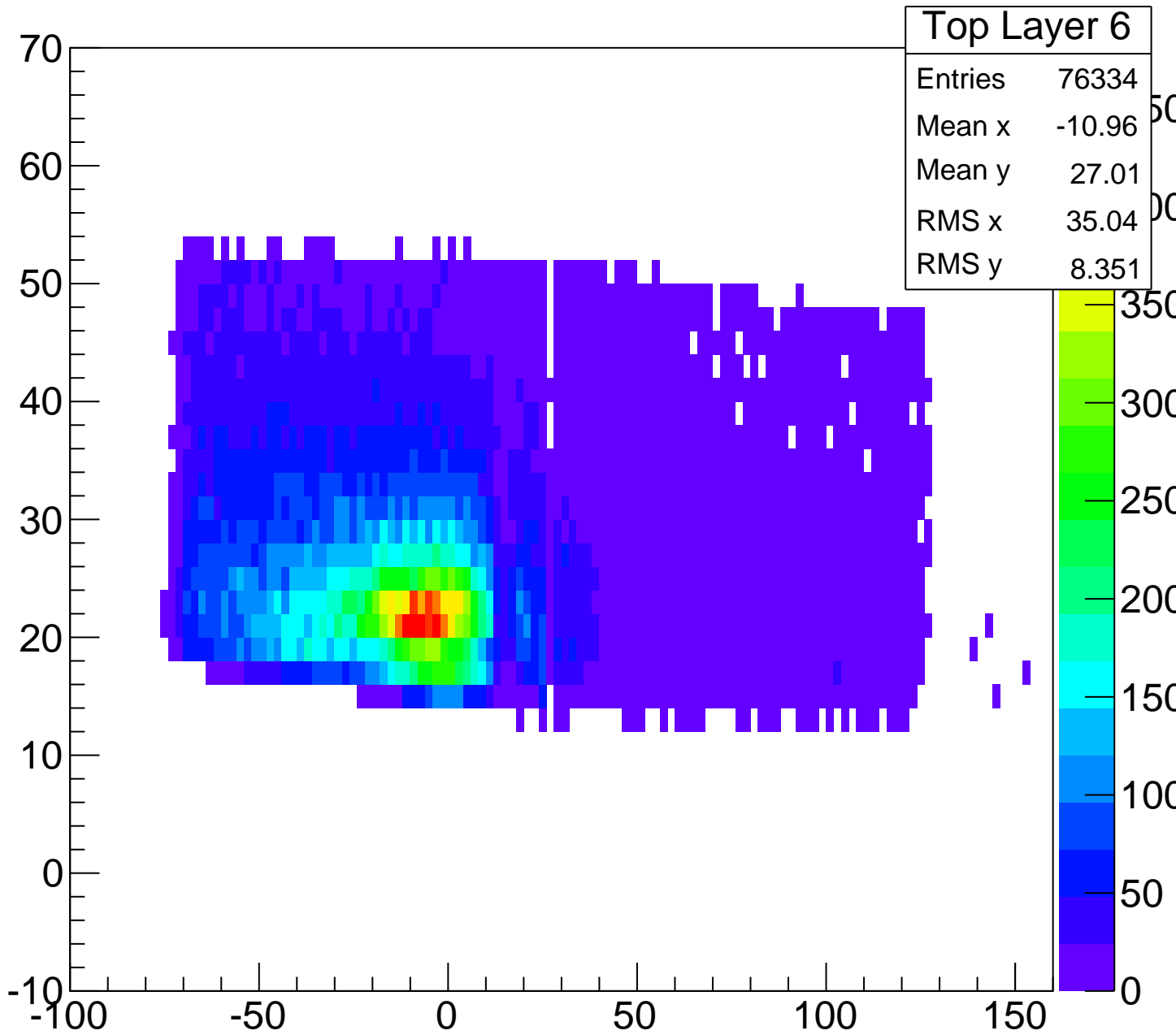
theta[e-] v theta[e-]



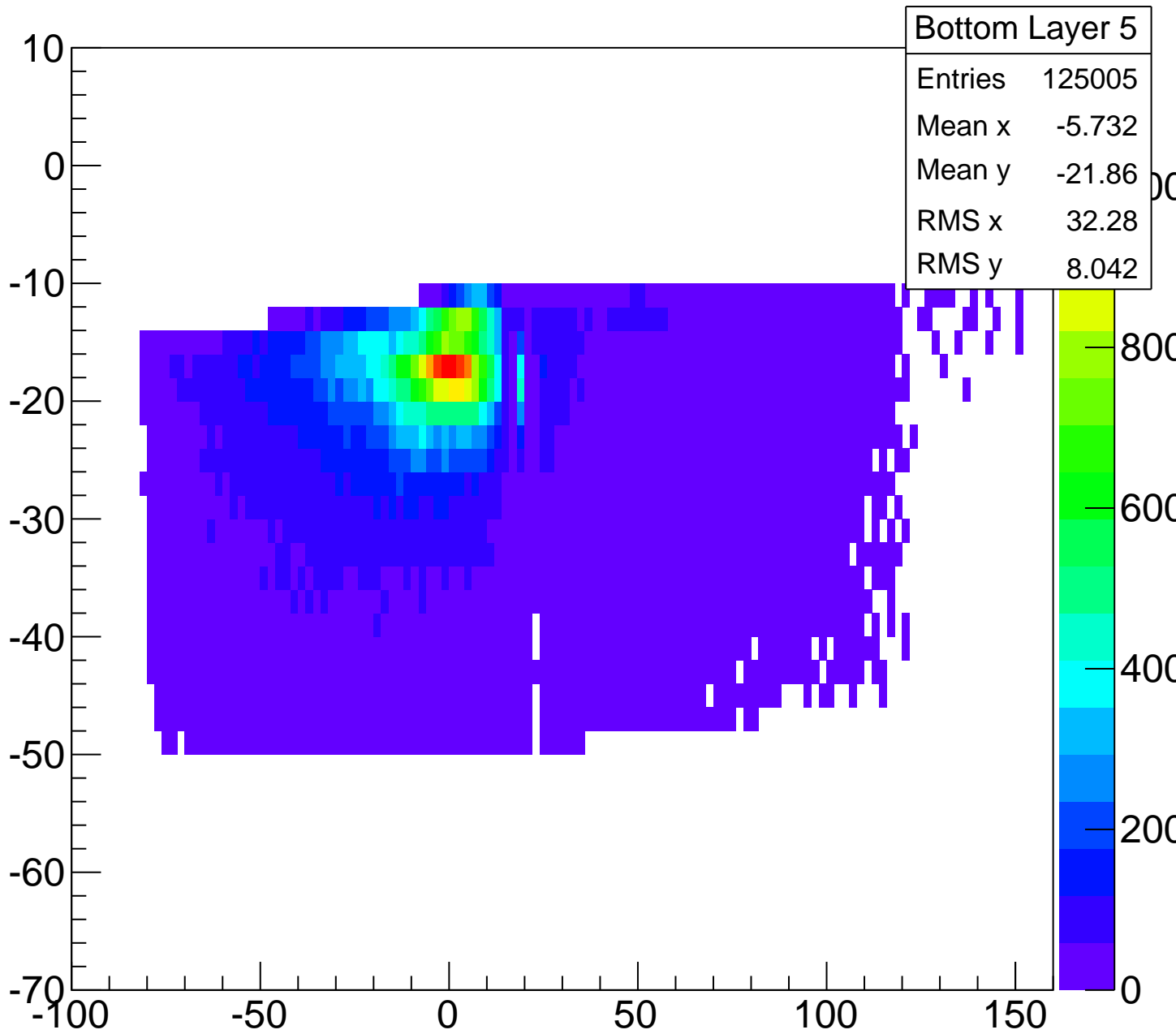
$p[e+] \text{ v } p[e-]$



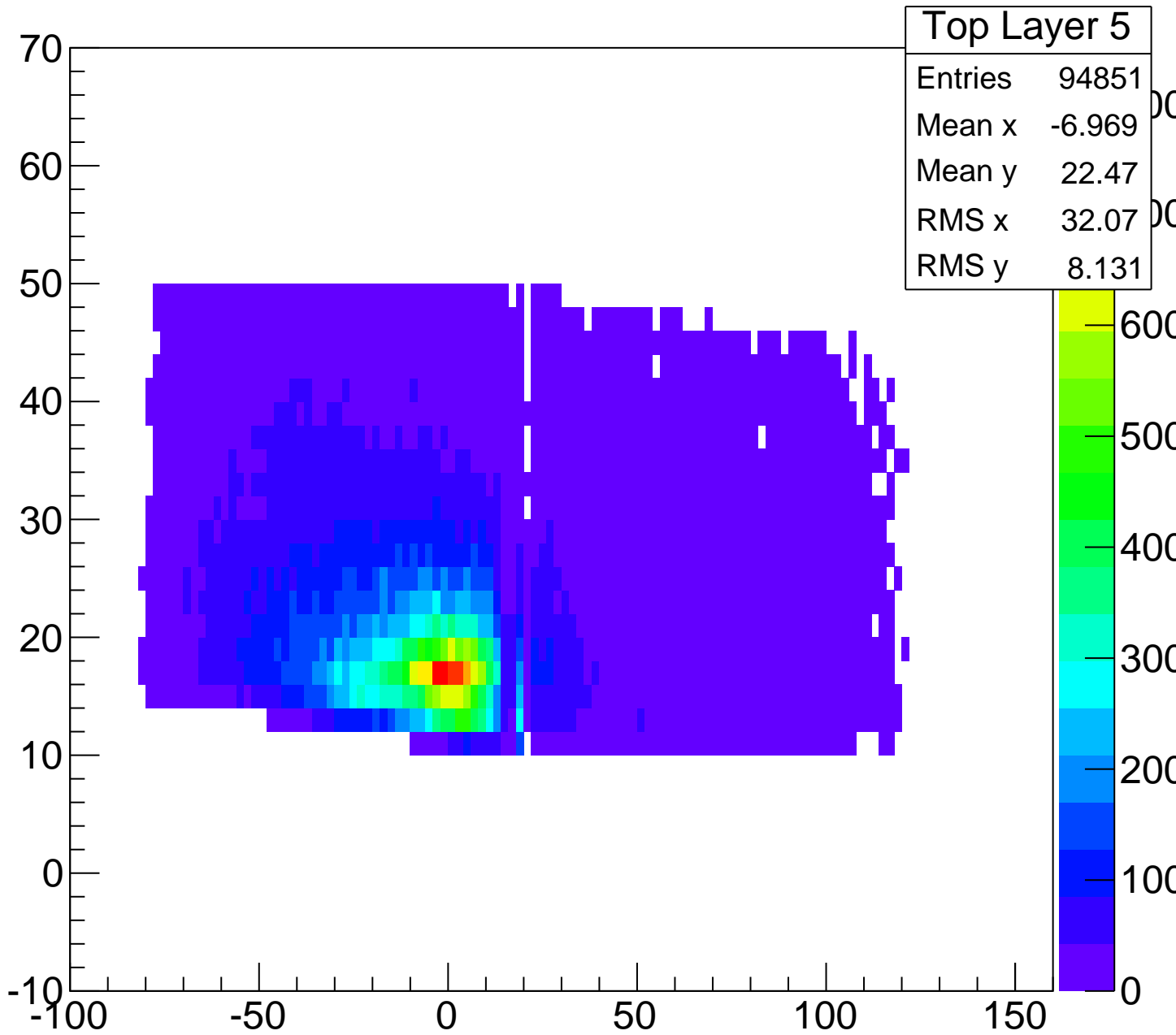
Top Layer 6



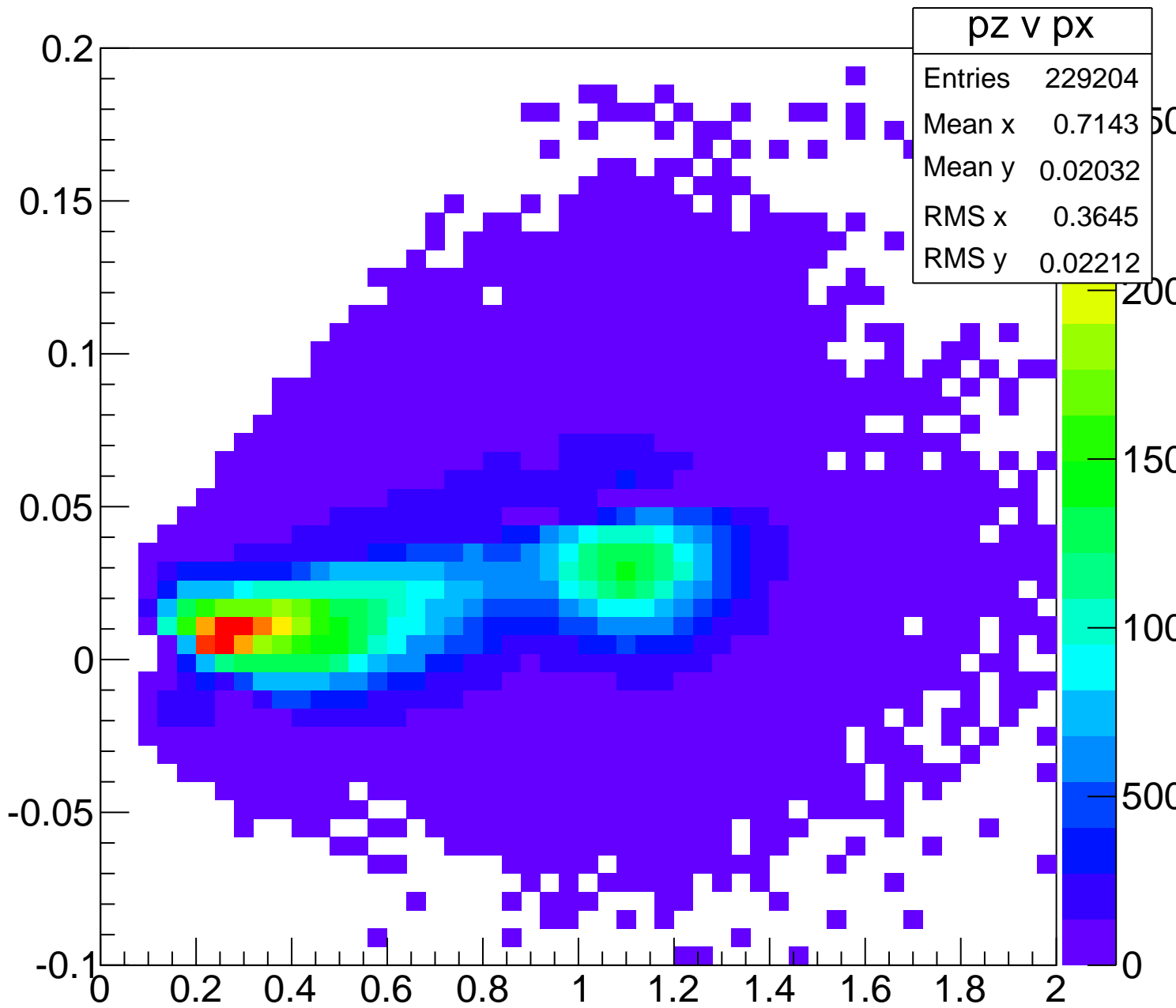
Bottom Layer 5



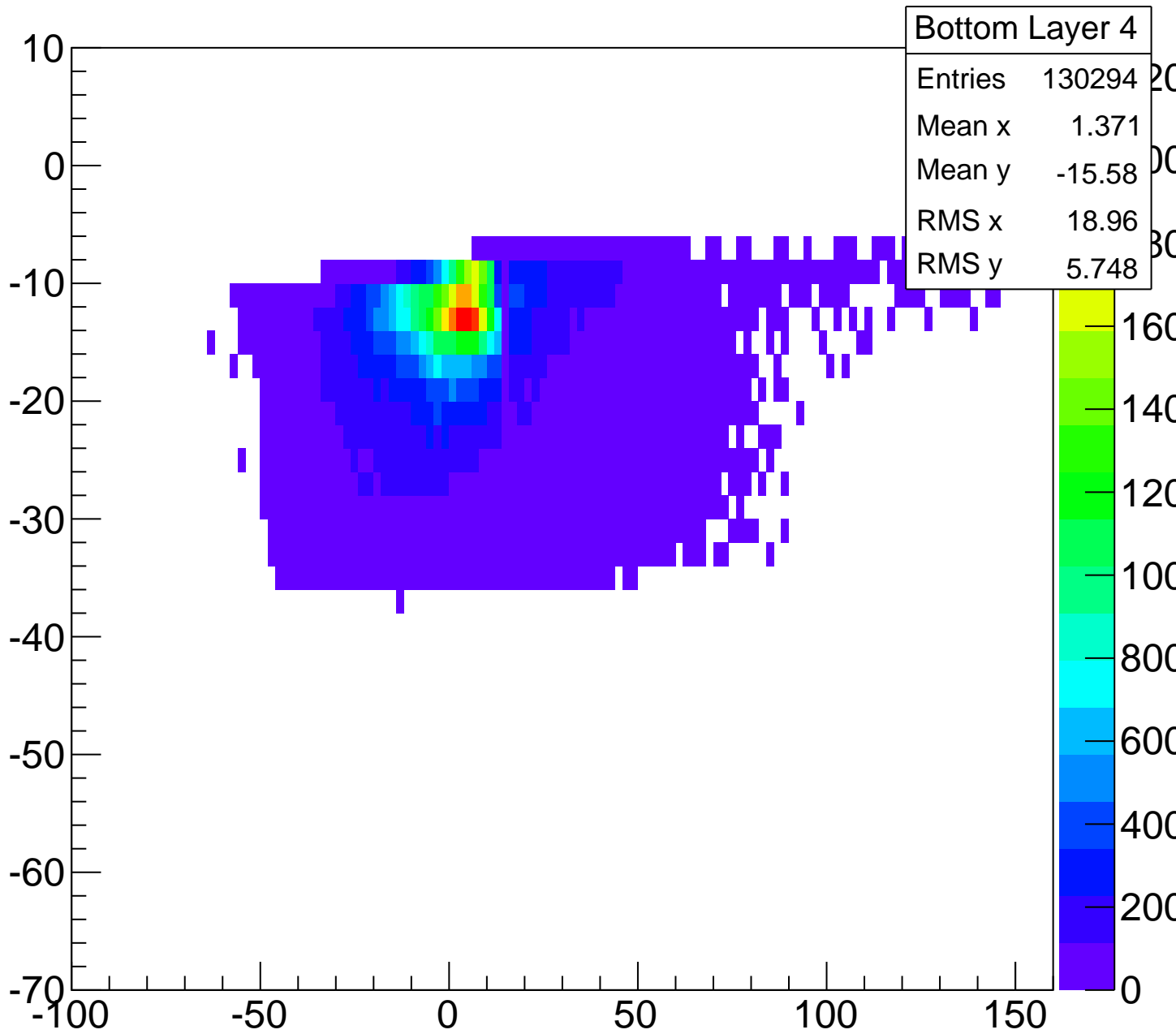
Top Layer 5



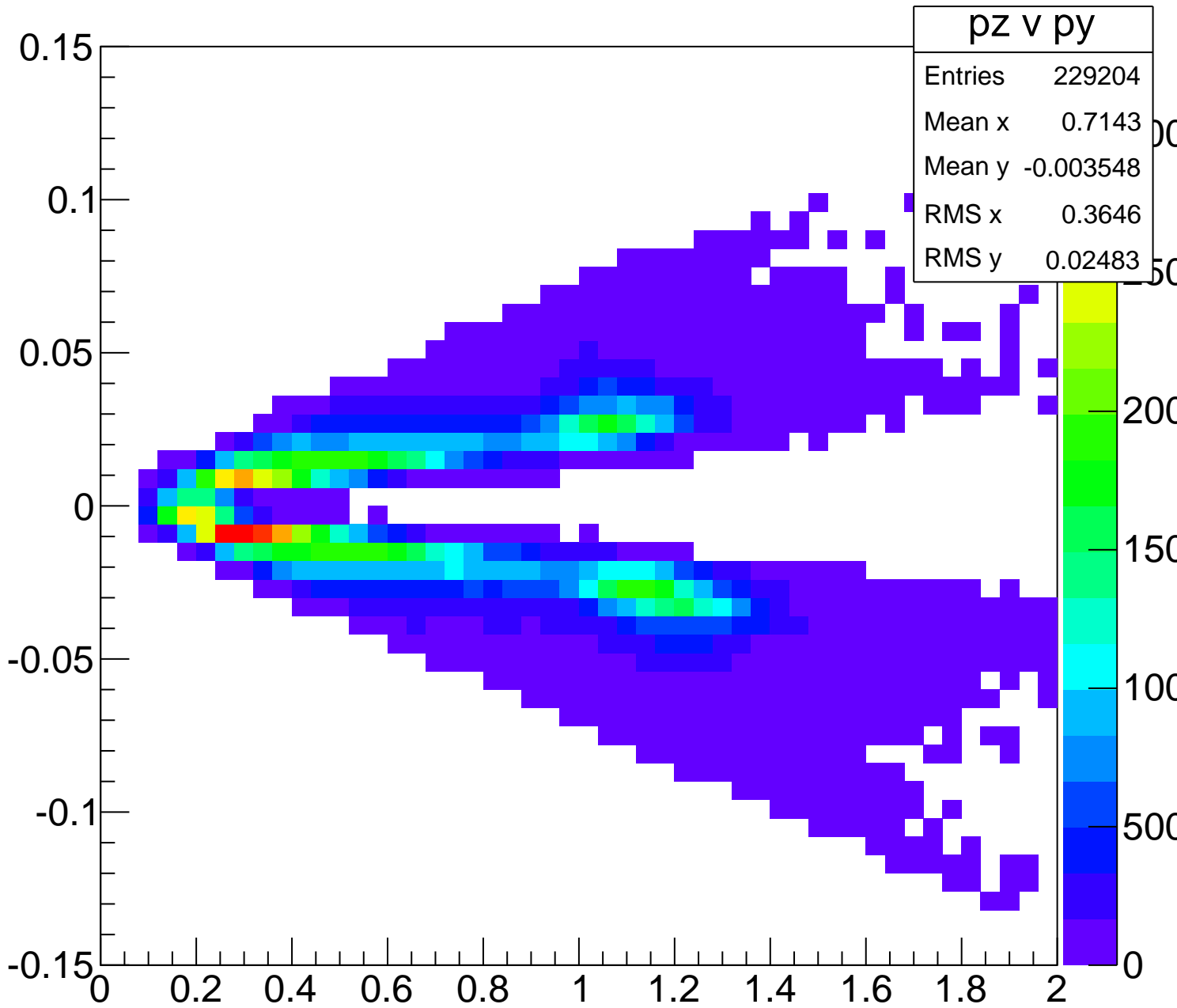
pz v px



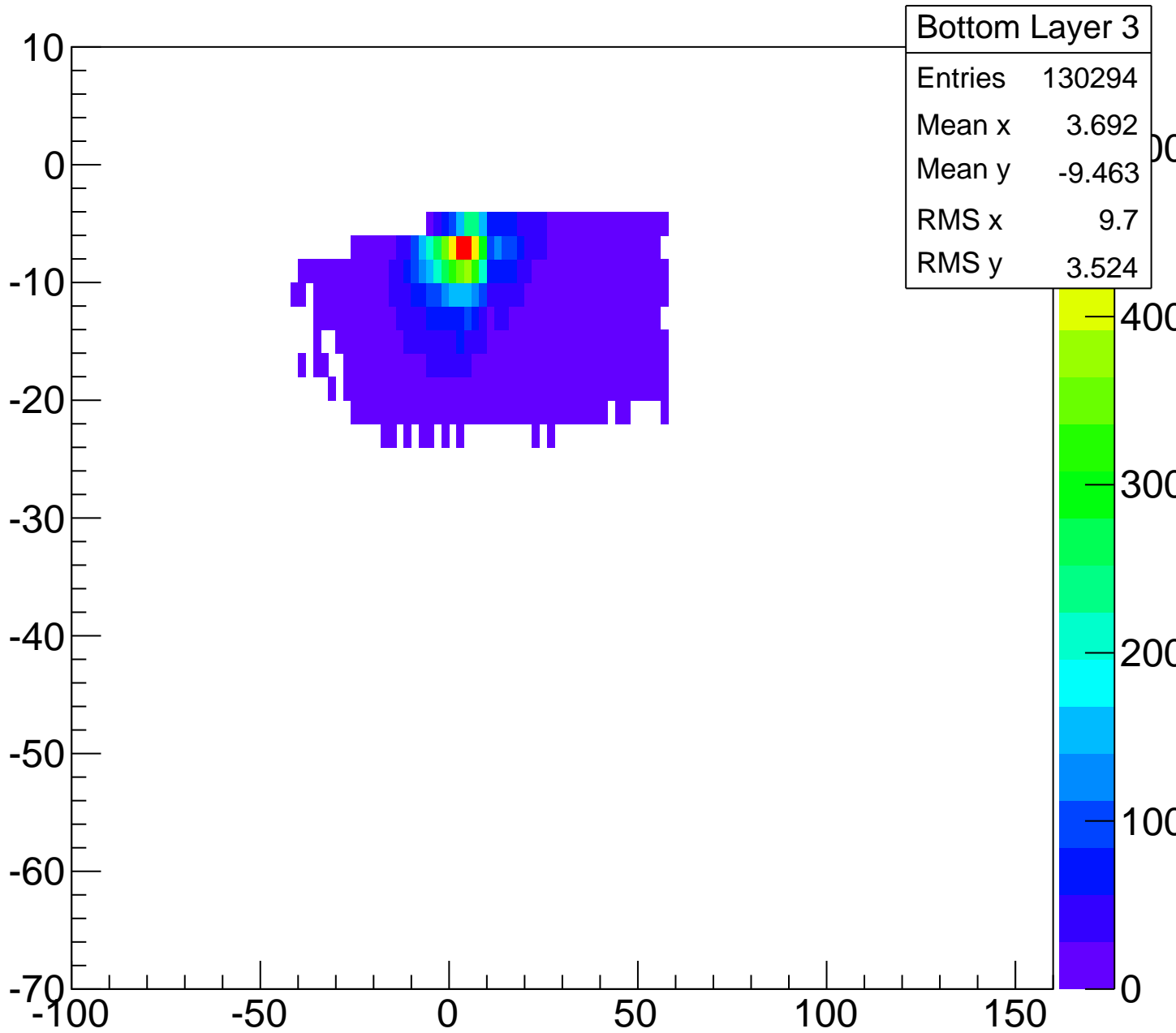
Bottom Layer 4



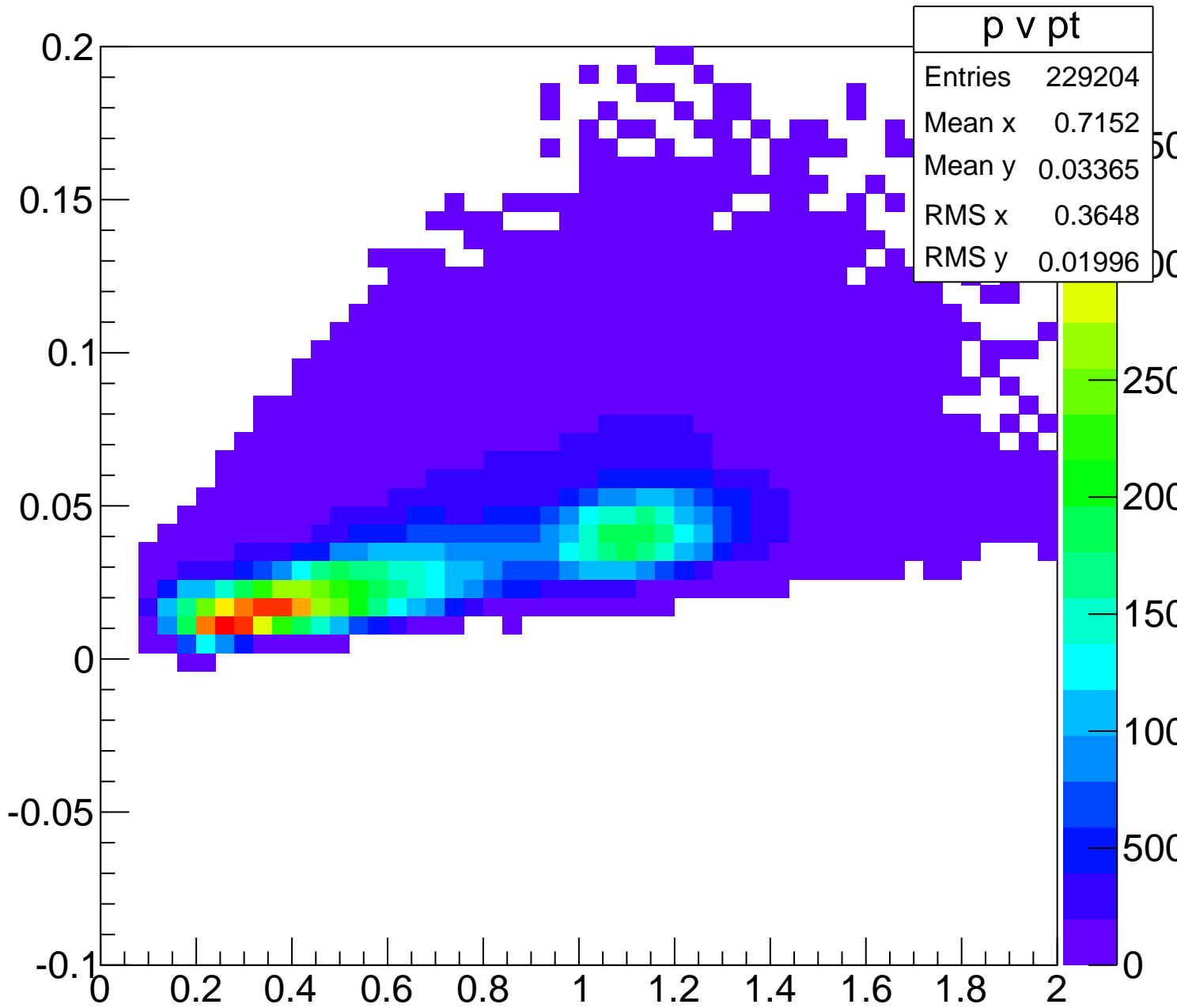
pz v py



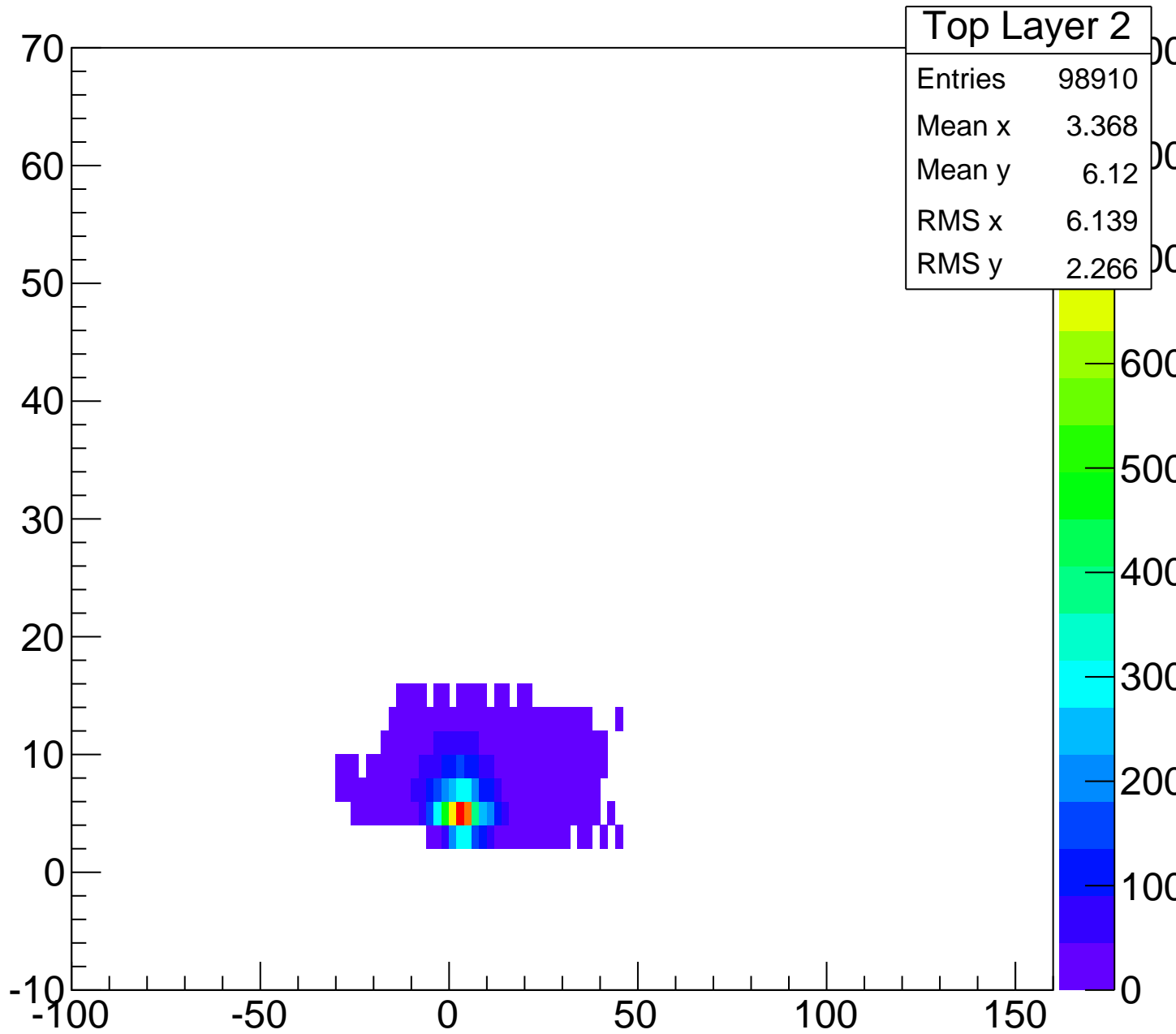
Bottom Layer 3



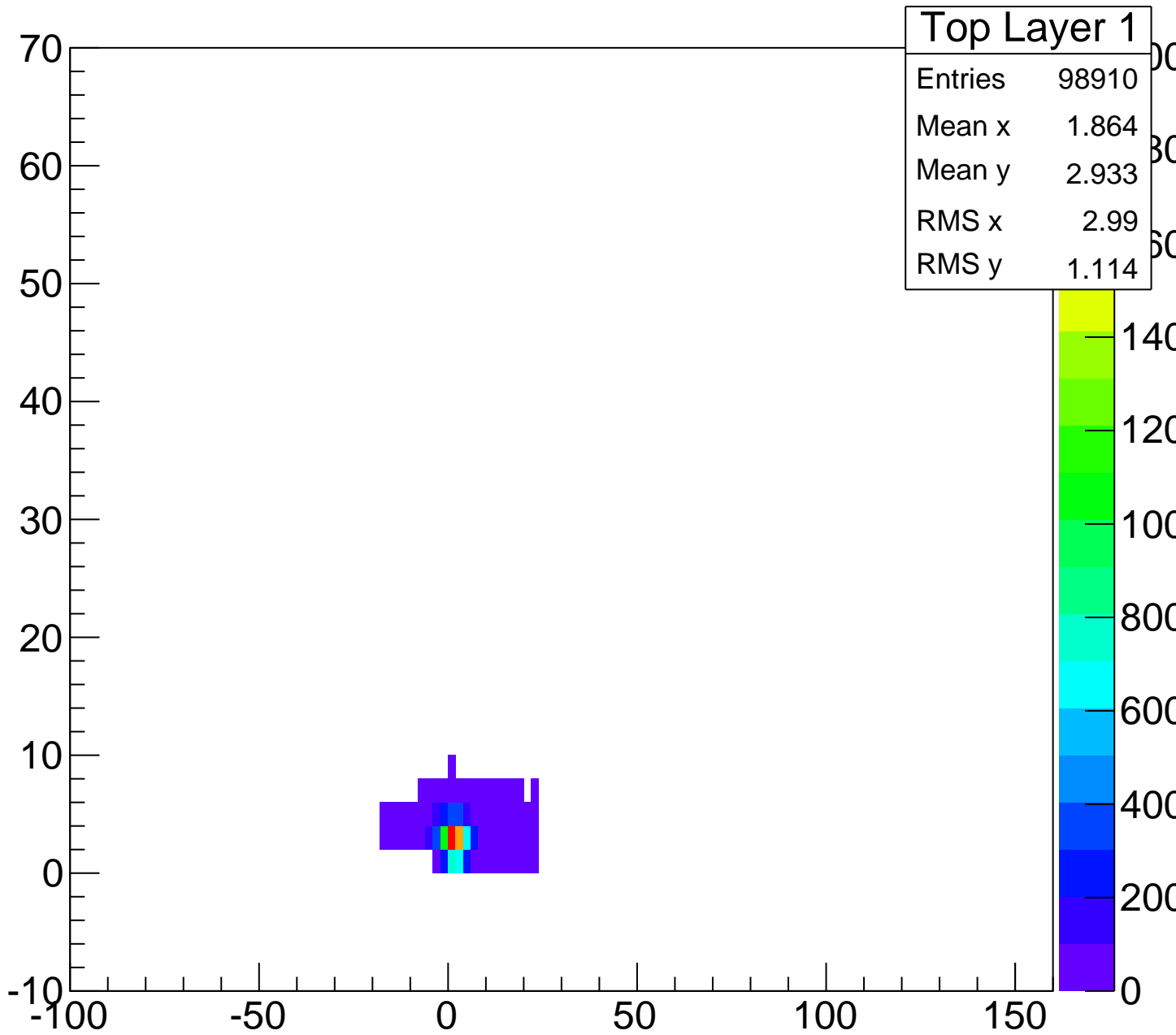
p v pt



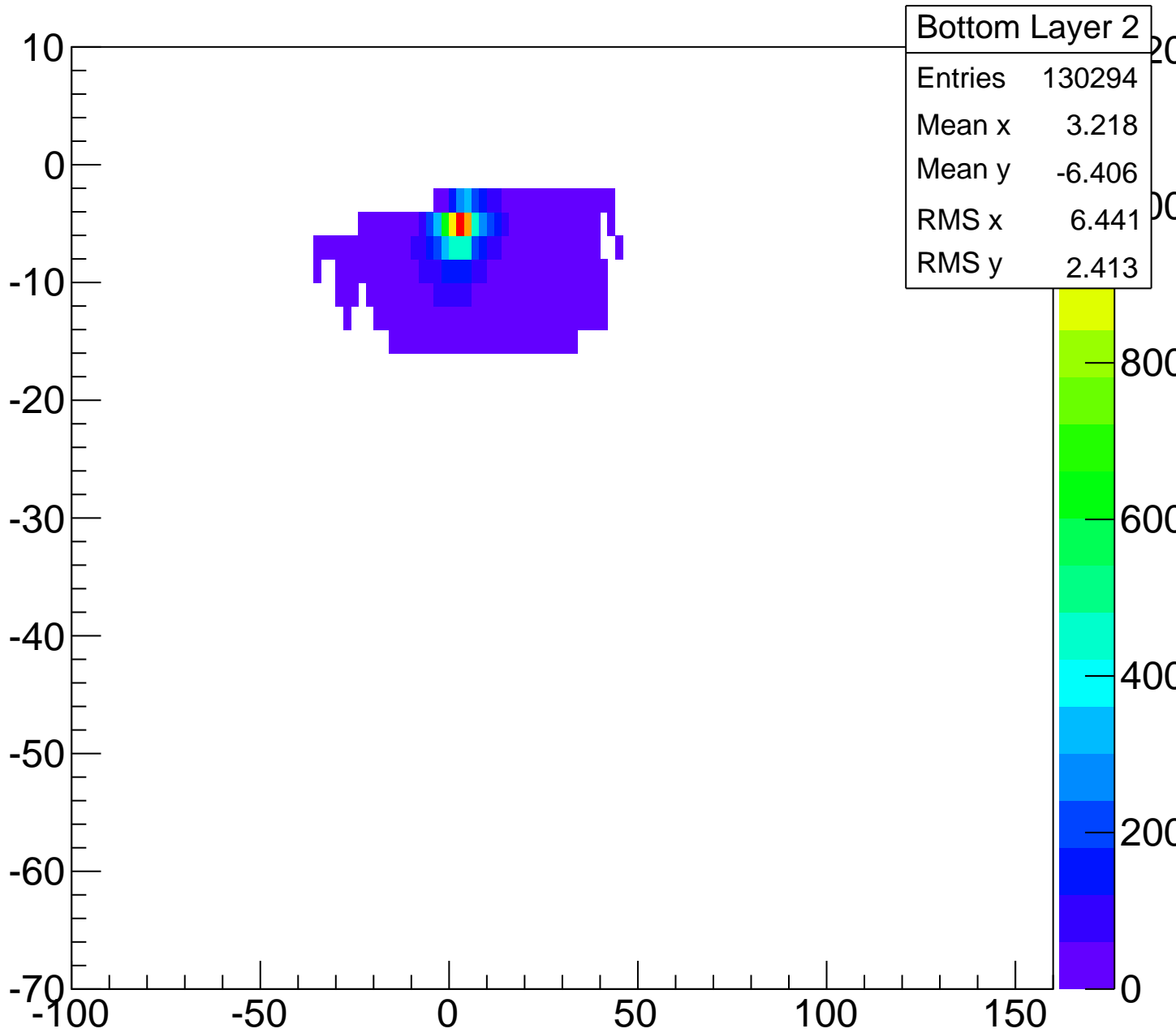
Top Layer 2



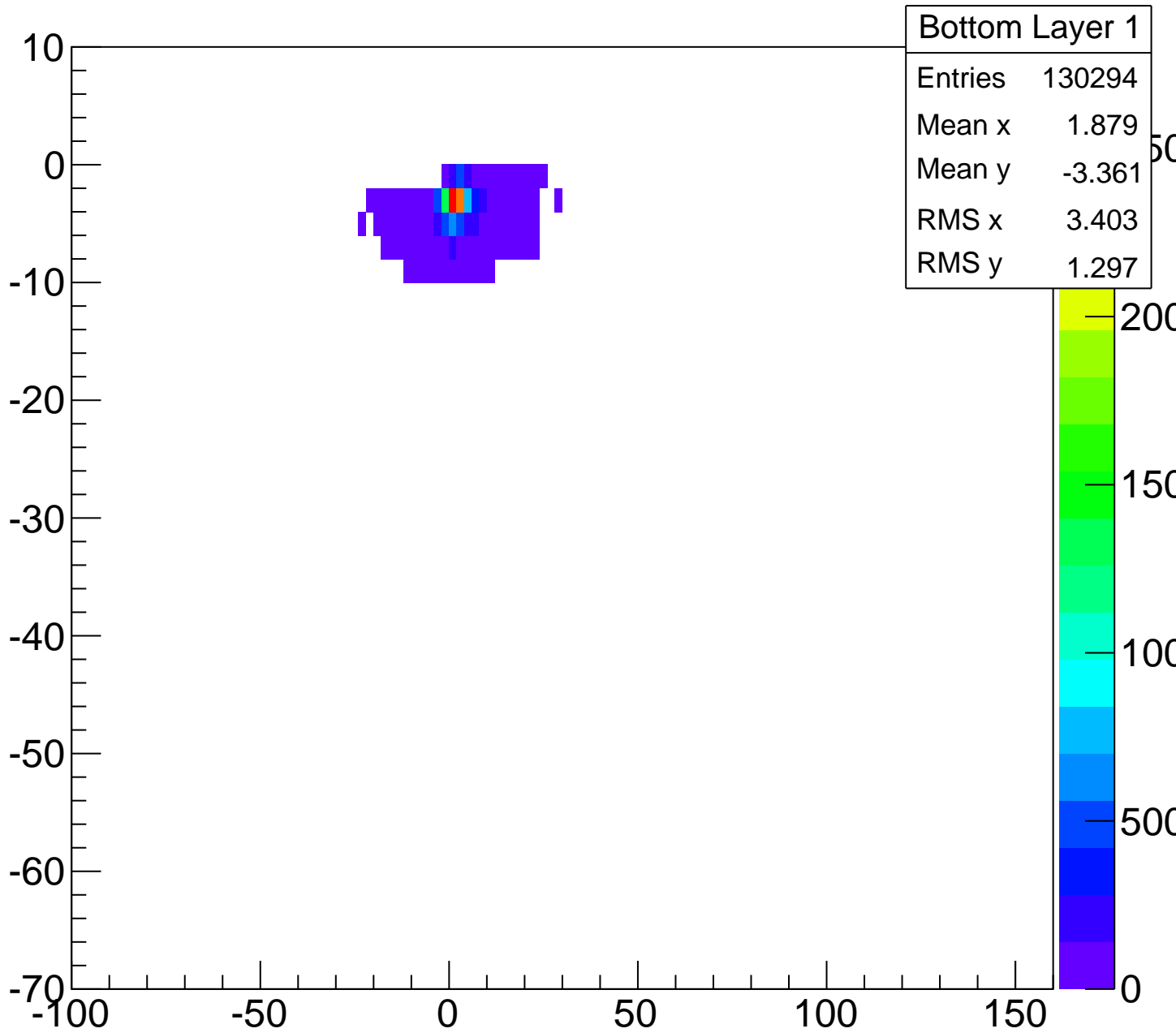
Top Layer 1



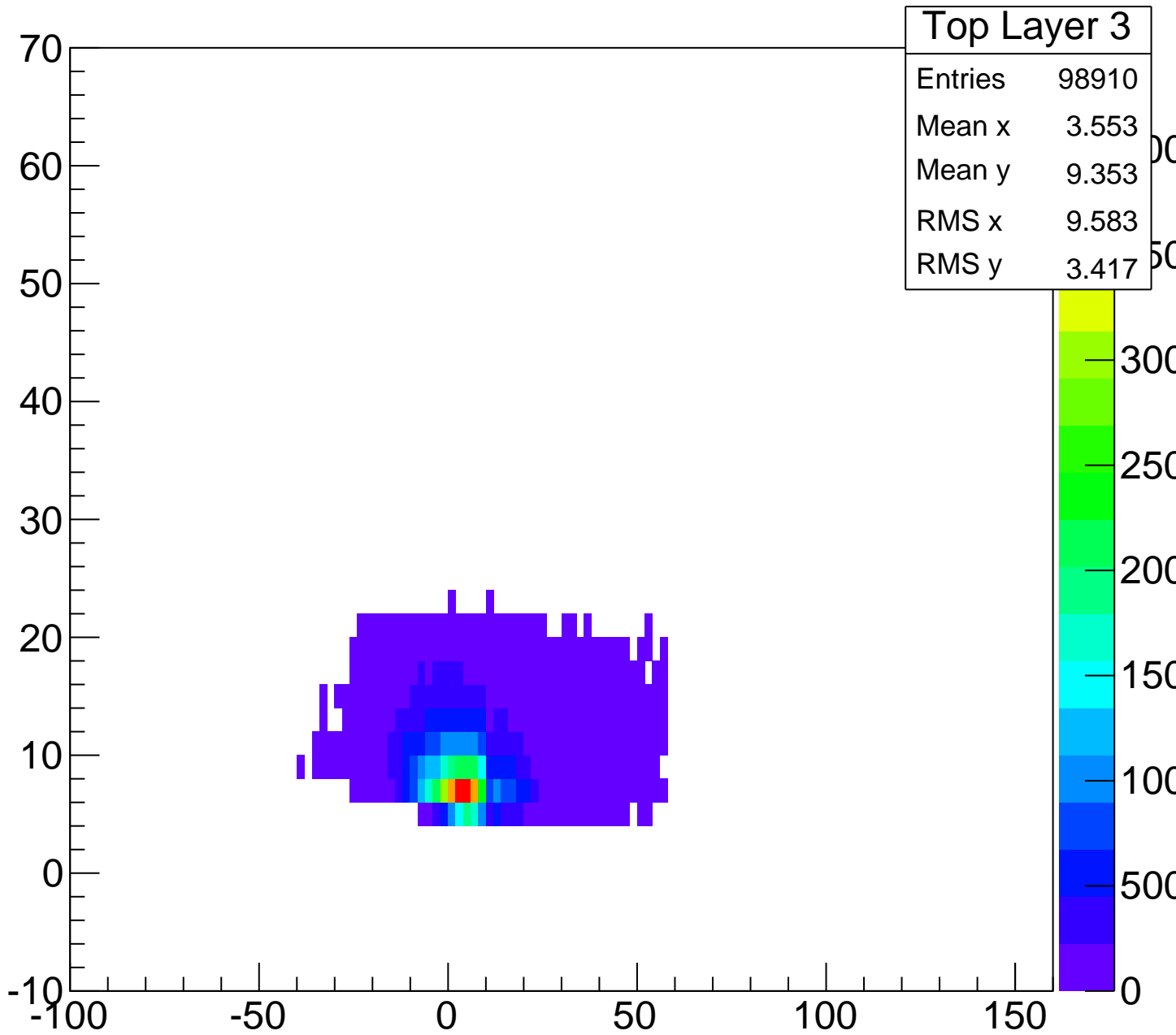
Bottom Layer 2



Bottom Layer 1



Top Layer 3



Top Layer 4

