



# *Fermi* Users Group



# FSSC Status Report

Chris Shrader,  
*Fermi* Science support Center  
NASA/GSFC



# FSSC Status, Major Activities

---



- Cycle-8 preparations
- Science tools & P8 release plans (Dave)
- Scheduling and planning support (Robin)
- Data operations, archive, user support activities nominal

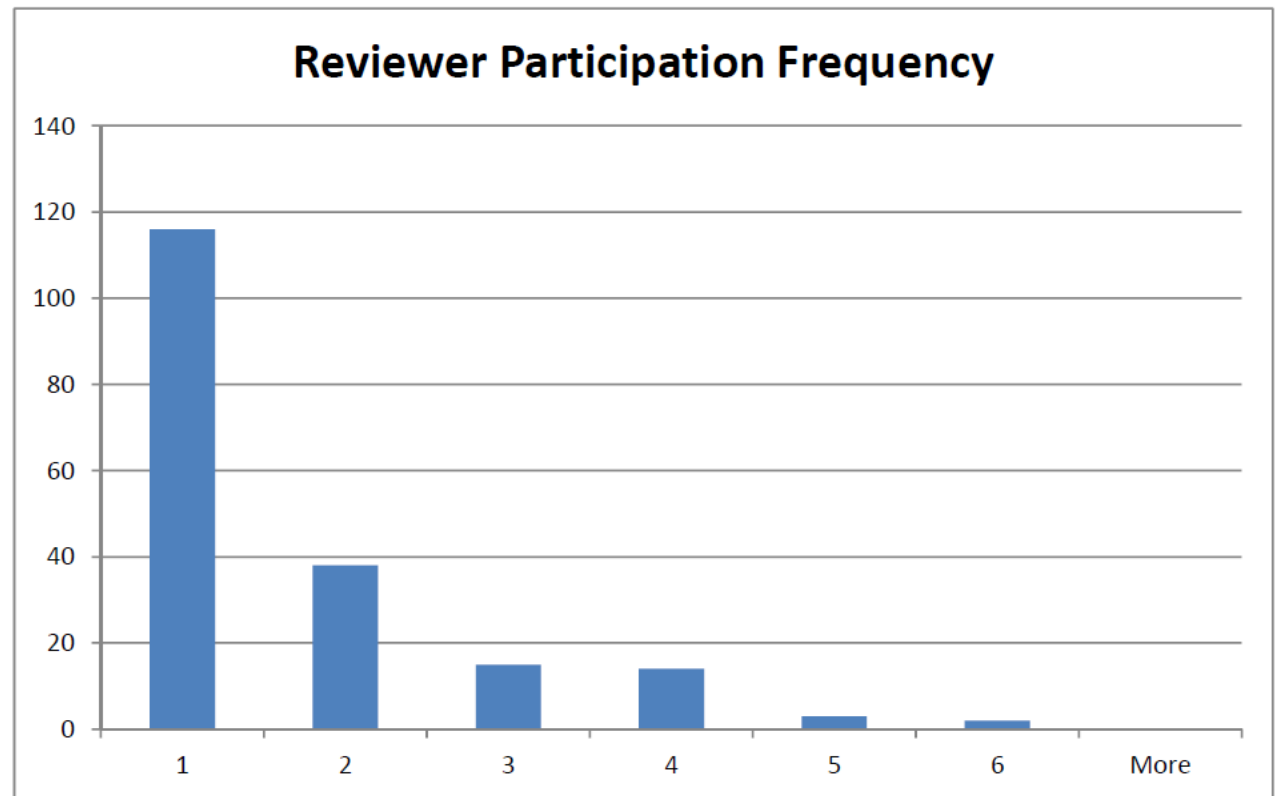
# A few Issues

- Inquiries from FUG regarding
  - Public dissemination of *pointlike* SW
  - Proposal review committee composition
    - ❑ Addressed in subsequent report
  - Gender statistics (Julie)

# Review Panel Participation

FUG inquired about Fermi proposal review panel participation history

Typically, repeat participants are common, but only 1 or 2 >3 times per given panel.



# Inquiry to FUG: *pointlike*



- *pointlike* does not offer unique capabilities beyond STs and *gtlike*.
- Runs than *gtlike* in some cases,
- Some tasks are easier to perform (e.g. extended analysis)
- *pointlike* is not ready for a public release.
- Code continues to be in development (setup issues, occasional crashes etc.)
- Could possibly be released, but not with the level of support provided for general Science Tools package



# *Fermi* Users Group



## Cycle-8 GI Program Report

Chris Shrader,  
*Fermi* Science support Center  
NASA/GSFC

# Cycle 8 GI Program



- 190 proposals received at the FSSC by 1/22/2015 due date
  - This represents about a 15% drop *wrt* Cy-5-7
  - Must consider in context ~60% budget drop
- Cycle-8 Schedule:
  - Form review committees & tech evals ongoing
  - Scientific peer review in late March 2015
  - Stage-I selections ~late April, stage-II late June
  - Cycle 8 starts in August 2015

# Cycle 7 Program: Details



## Cycle-8 Quick Statistics

-----

190 proposals received, involving 500 individual investigators at 250 institutions

2 Large, 61 2-year, 3 Progress Reports

30% Theory, 25% Correlated Observations

3 pointed observation requests  
\$9.626M requested, \$62k/yr average (excluding large)

33% Extragalactic, 16% Pulsars, 17% GRBs, 2% Solar, 17% diffuse/SNRs, 15% misc.

Joint programs (proposals / obstime)

NRAO: (10 / 200 hrs)

NOAO: (4 / 441 hrs)

VERITAS: (10 / 445 hrs)

Arecibo: (4 / 150hrs)

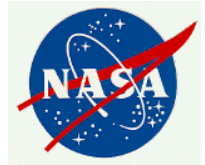
INTEGRAL: (1 / 100ksec)

Suzaku: (0 / 0)

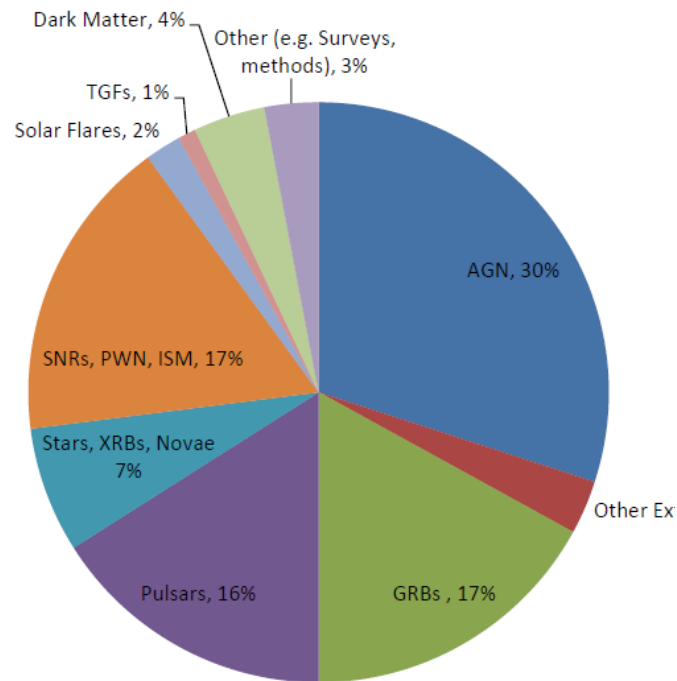
## Approved (tbd)

*approximate*, based on \$3M available budget:

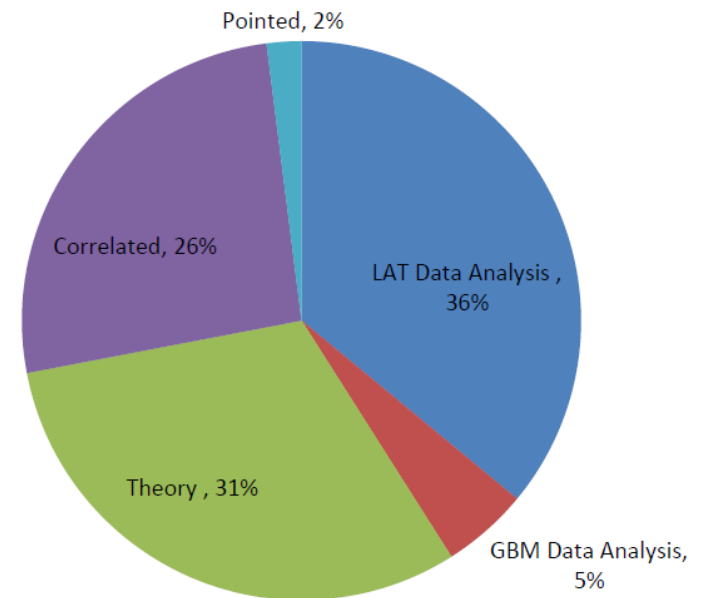
~15%, 20-25 new proposals



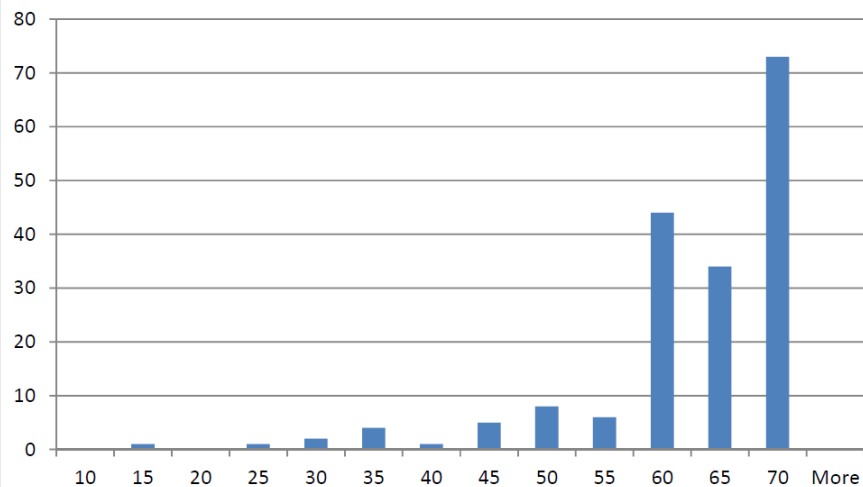
## Topical Breakdown of Submitted Proposals



## Submitted Proposals by Type



## Distribution of Grant Requests (\$k)

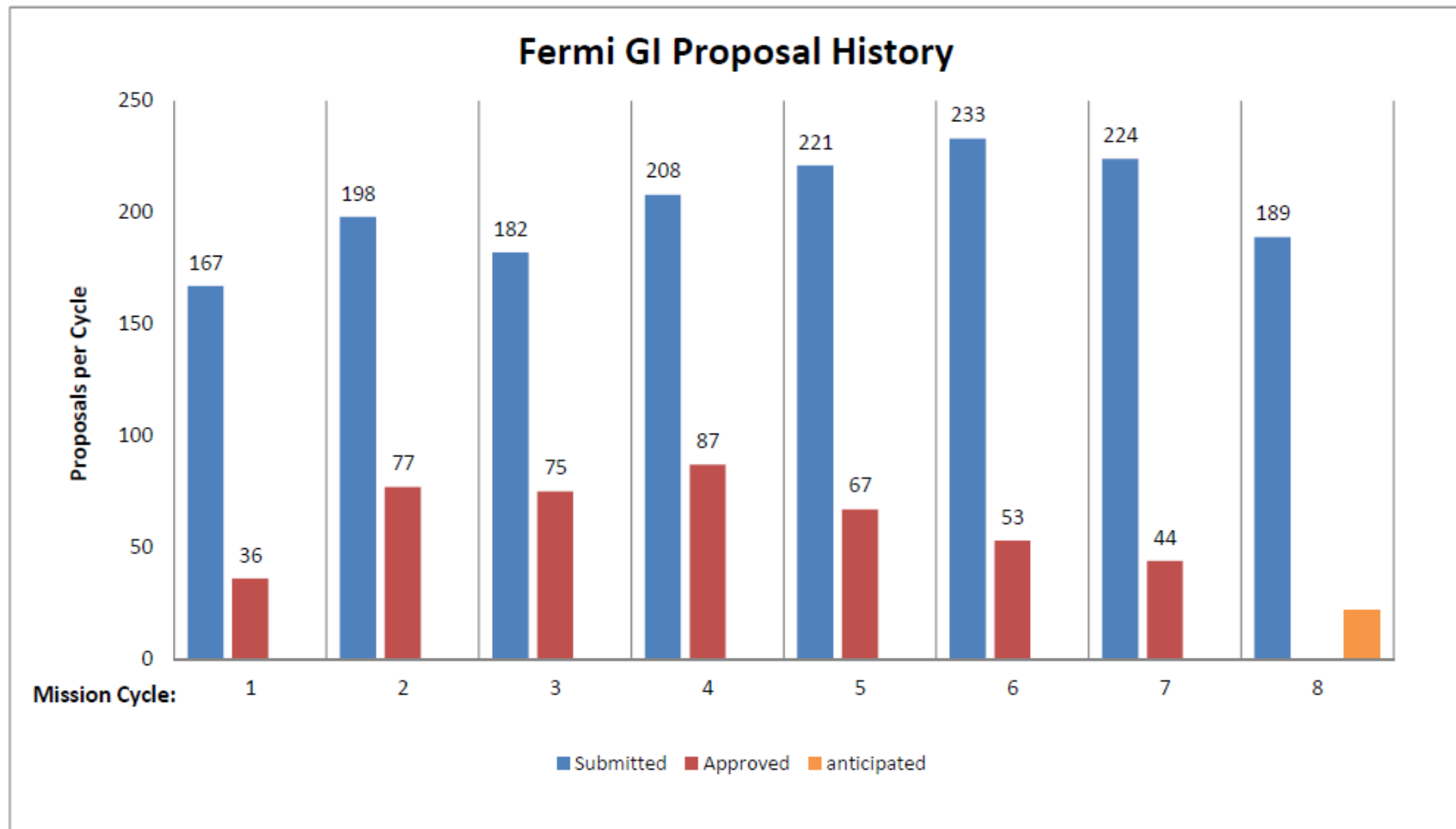


# Cycle 8 GI Program



- Some budgeting details:
  - \$3M available for cy-8 grants of which \$1.7M is obligated for continuation of multi-year grants
  - The average request (not counting 2 Large project proposals) is \$62k, thus we anticipate ~20 new Cy-8 awards w/o imposing new cost caps
  - Reduce cap for, e.g., lower 1/3 of proposals likely to be selected? Reduce Large Project cap? Reduce or eliminate 2-yr awards?
  - Other strategies?
- FUG input on how best to proceed

# GI Program History





# Extra Slides

---

