

Improving SLAC's AT&T cell phone coverage

Les Cottrell & Jim Healy

Presented at the POW meeting

5/17/10

AT&T Macro Cell Site

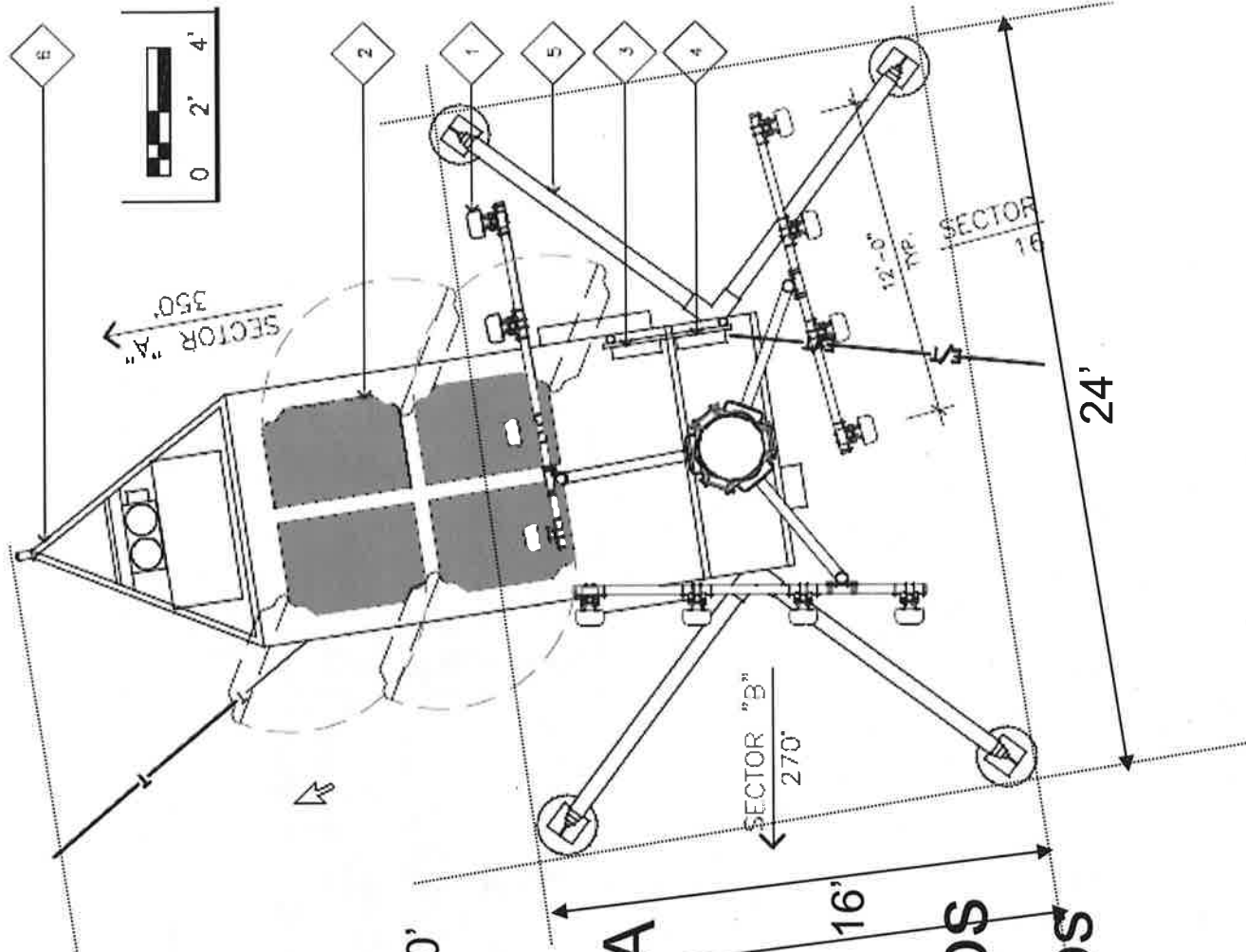
- Two prong approach
 - Install a temporary tower to quickly improve coverage
 - Install permanent macro cell site at SLAC



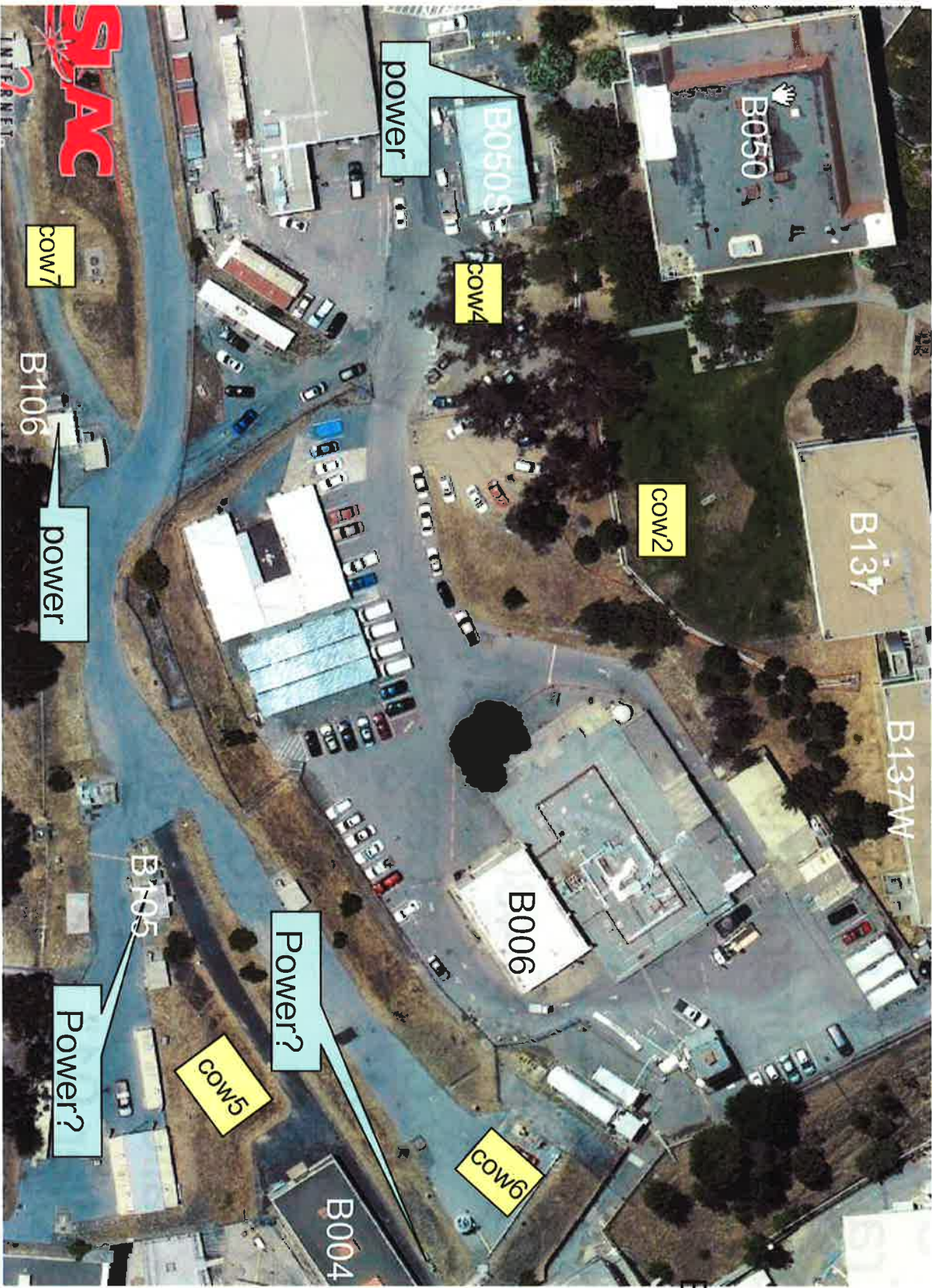
Permanent location

Possible COW

- Trailer with outriggers
- Cover 3 directions
 - 4 antennae/direction 30'
- Needs 200A 208V 2P
 - Can accept 480v, 100A
- Size w clearances:
 - 30'x40'
- COW GVR = 16,000lbs
 - trailer 12,500-14,000lbs
- Trailer 91" x 316.25"

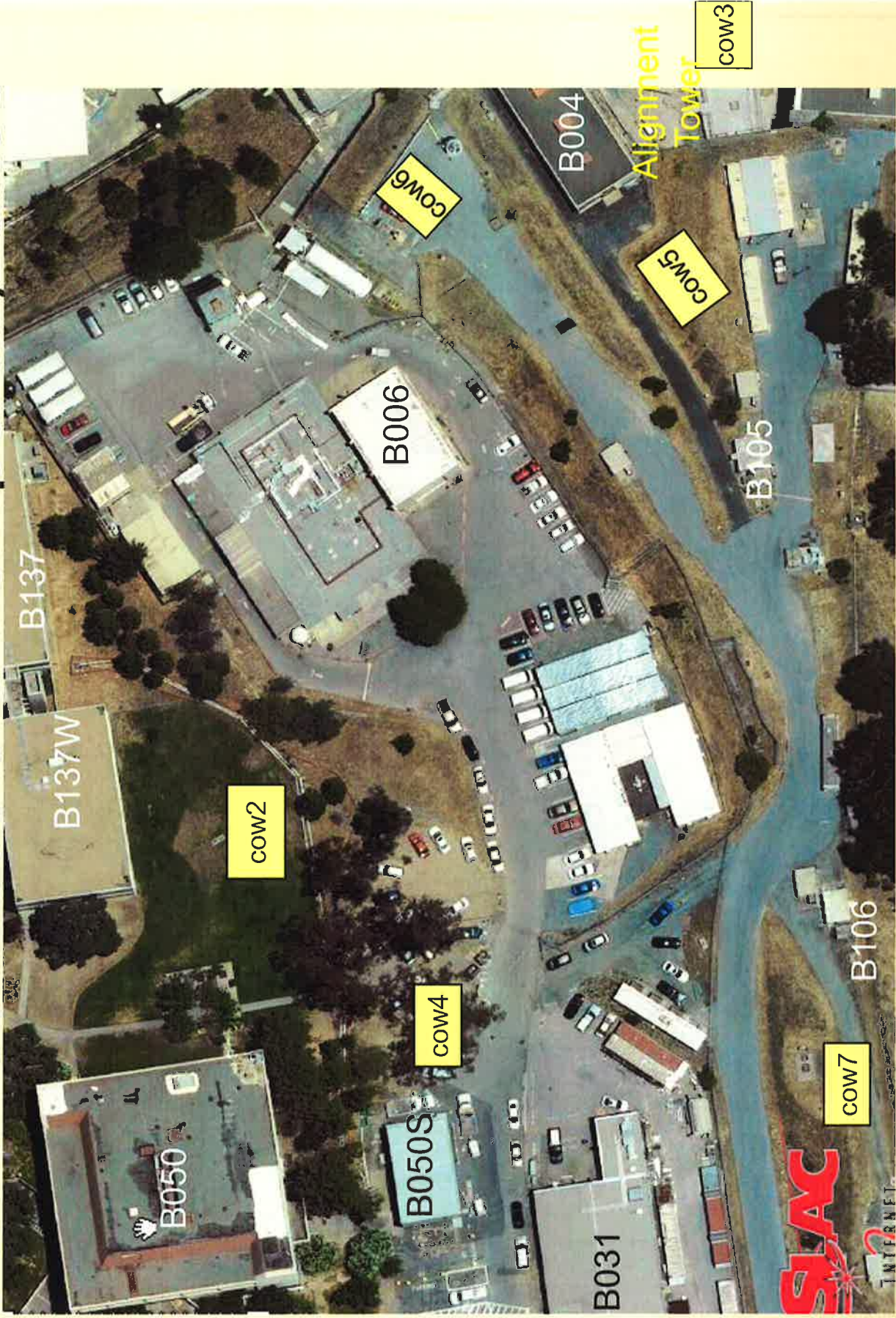


Possible COW sites + Power



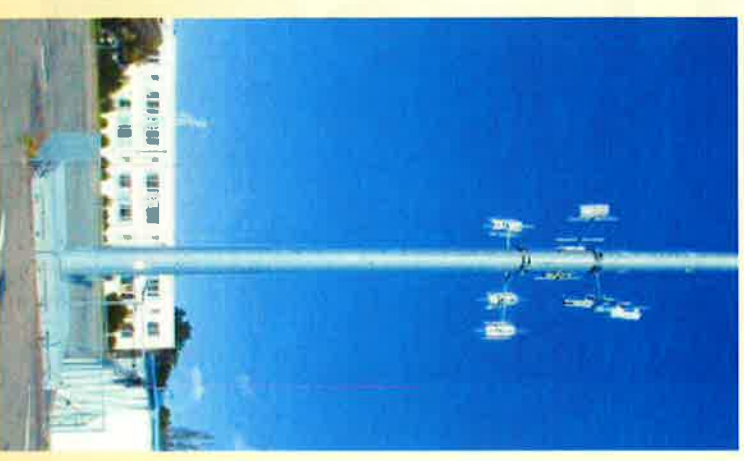
B060

Reviewed Possible Temporary Sites



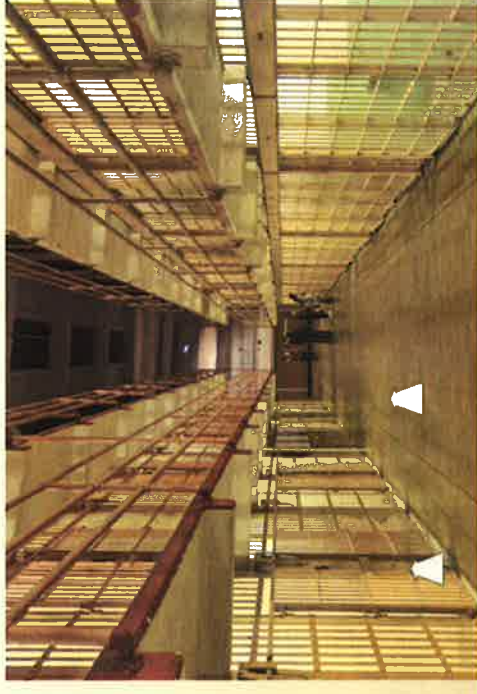
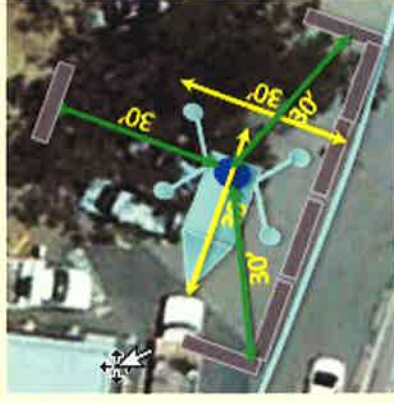
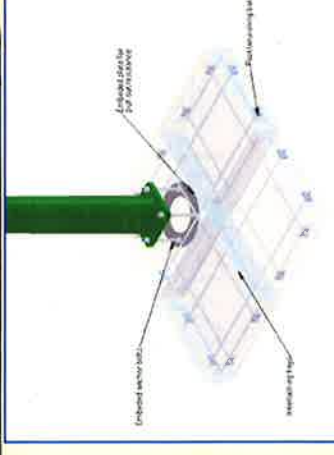
What has changed

- Temporary cell site location
- Types of temporary towers
- Approval for installation
- Estimated installation schedule
- Estimated commissioning



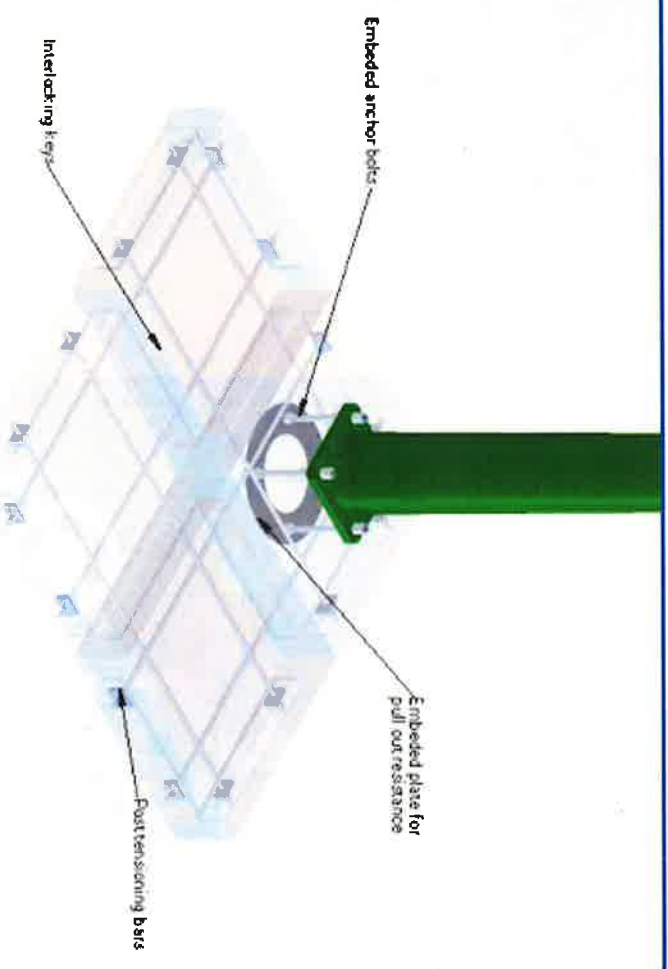
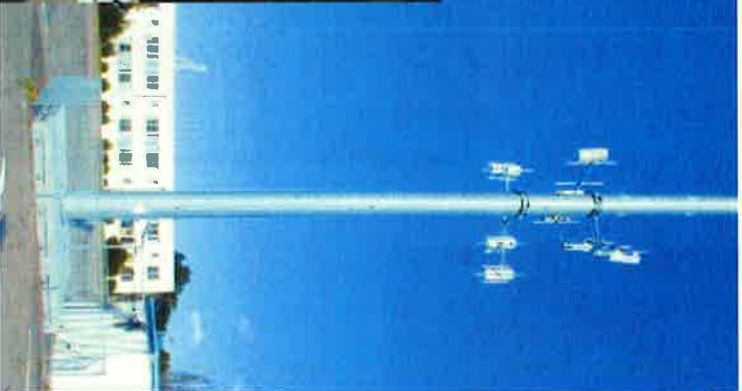
Types of temporary towers

- Initial choice Cell on Wheels (COW)
- Changed to Cell Blocks,
 - less space no guy wires etc (14'x14' vs 40'x40') = more choices



Temporary Cell Tower

- Tower foundation
 - Cell Blocks: Pre-cast foundation of 7'x7'x2' (deep) blocks
 - Interlocking, bolted together 15Klbs each
 - No excavation required



Chosen Temporary cell tower site



B050



- Re-alignment of road striping and addition of stop signs
- Removal of about 5 parking slots



Temporary cell site

