

DO NOT SCALE

This drawing has been produced by Dorman Long Technology in accordance with the instructions of the client for their sole and specific use.

Dorman Long Technology shall not be liable for the use of any information contained on this drawing, enquiries should be directed to Dorman Long Technology at the address given below before executing such part of the works.

Should there be any doubt regarding the interpretation of any information given on this drawing, enquiries should be directed to Dorman Long Technology at the address given below before executing such part of the works.

Copyright © Dorman Long Technology

NOTES

SPECIFICATION FOR 4-POINT SYSTEM

- Safe working load (SWL)
 - Stage 1 = 400 tonnes @ 83 bar
 - Stage 2 = 400 tonnes @ 120 bar
 - Stage 3 = 276 tonnes @ 120 bar
- Test load = 1.25 x SWL at each stage
- Maximum dynamic lateral load = 5% of vertical load
- Maximum dynamic wheel load = 454 kN
- Lifting speed = 0.5 m/minute constant for all ram stages
- Lowering speed = 0.5 m/minute constant for all ram stages
- Movement speed = 3.0 m/minute
- Power supply = 380-440V, 50-60 hz, 3 phase + earth.
- Maximum power consumption = 4x11 kW
- Operating temperature = -20 to +45°C
- Control system = central wireless control console plus local pendant controller to each DL-TLG100 unit
- Maximum head beam slope = ±1% in normal operating conditions

MAIN FEATURES

- 100 TONNES LIFTING CAPACITY PER UNIT, 400 TONNES TOTAL
- ALL COMPONENTS SUITABLE FOR TRANSPORT IN STANDARD SHIPPING CONTAINERS
- ADJUSTABLE TRACK WIDTH FOR INCREASED STABILITY
- CENTRAL WIRELESS CONTROL WITH MANY SAFETY FEATURES
- ACCURATE ADJUSTMENT OF THE LOAD POSITION TO +/-1 MM IN ALL DIRECTIONS
- MANY UNIQUE SAFETY FEATURES
- THE TRACKS CAN BE AT DIFFERENT LEVELS

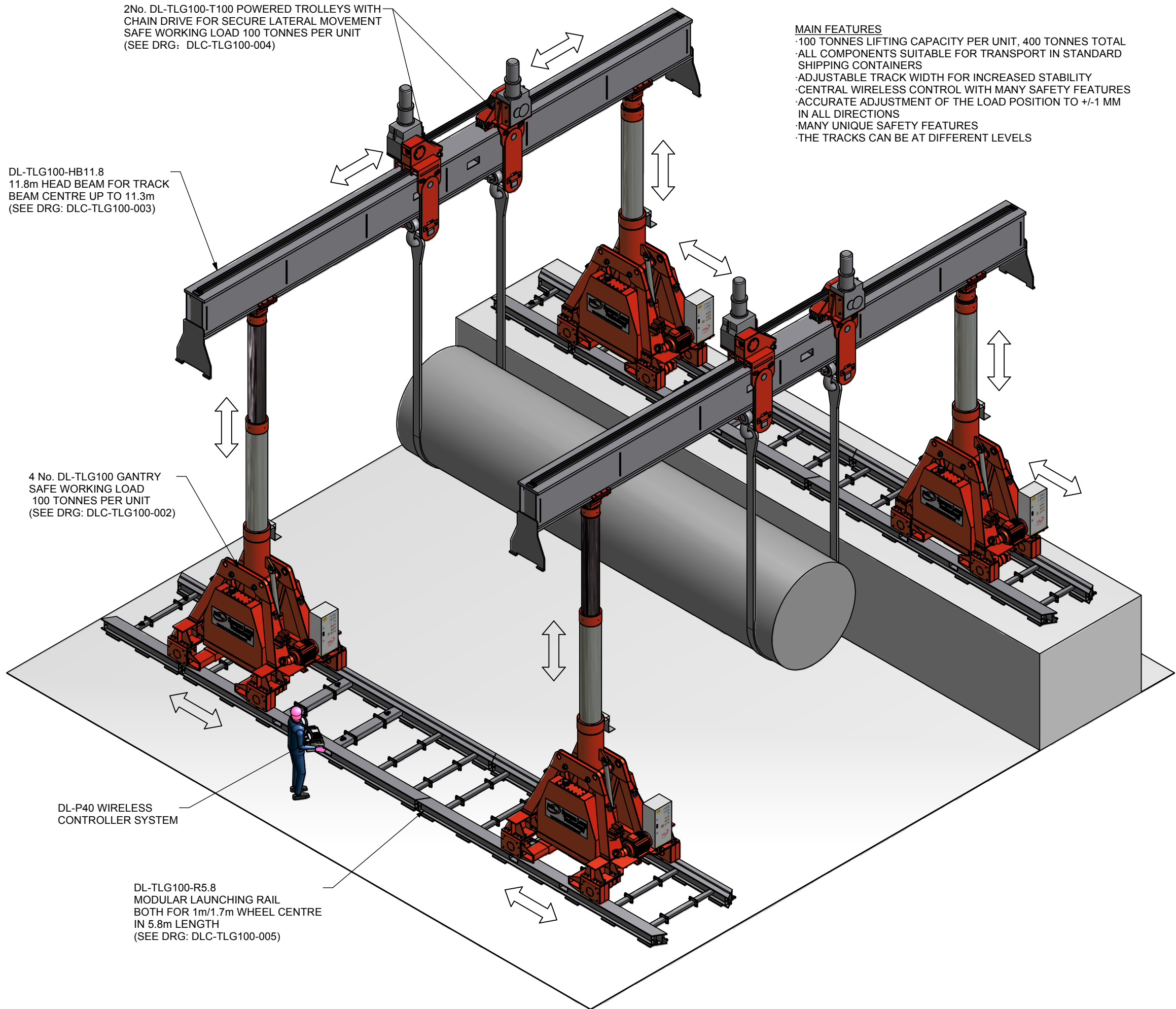
2No. DL-TLG100-T100 POWERED TROLLEYS WITH CHAIN DRIVE FOR SECURE LATERAL MOVEMENT SAFE WORKING LOAD 100 TONNES PER UNIT (SEE DRG: DLC-TLG100-004)

DL-TLG100-HB11.8 11.8m HEAD BEAM FOR TRACK BEAM CENTRE UP TO 11.3m (SEE DRG: DLC-TLG100-003)

4 No. DL-TLG100 GANTRY SAFE WORKING LOAD 100 TONNES PER UNIT (SEE DRG: DLC-TLG100-002)

DL-P40 WIRELESS CONTROLLER SYSTEM

DL-TLG100-R5.8 MODULAR LAUNCHING RAIL BOTH FOR 1m/1.7m WHEEL CENTRE IN 5.8m LENGTH (SEE DRG: DLC-TLG100-005)



11	11.05.11	INF	THE FIRST ISSUE	WZY
Rev	Date	Status	Description	By Chkd



Dorman Long Technology
 The Charles Parker Building
 Midland Road, Higham Ferrers
 Northamptonshire, NN10 8DN
 United Kingdom
 Tel: +44 (0) 1933 319133
 Fax: +44 (0) 1933 319135
 www.dormanlongtechnology.com

Project
 DL-TLG100
 Telescopic Lifting Gantry

Drawing Title
 General Arrangement & Specification

Design Eng:	WILL	Checking Eng:	KING
Drawn by:	WZY	Project Eng:	DJD

Scales (At A3) AS SHOWN
 Drawing Status
 INFORMATION

Original Drawing size: A3	Sheet	Rev.
Drawing No. DLC-TLG100-001		11

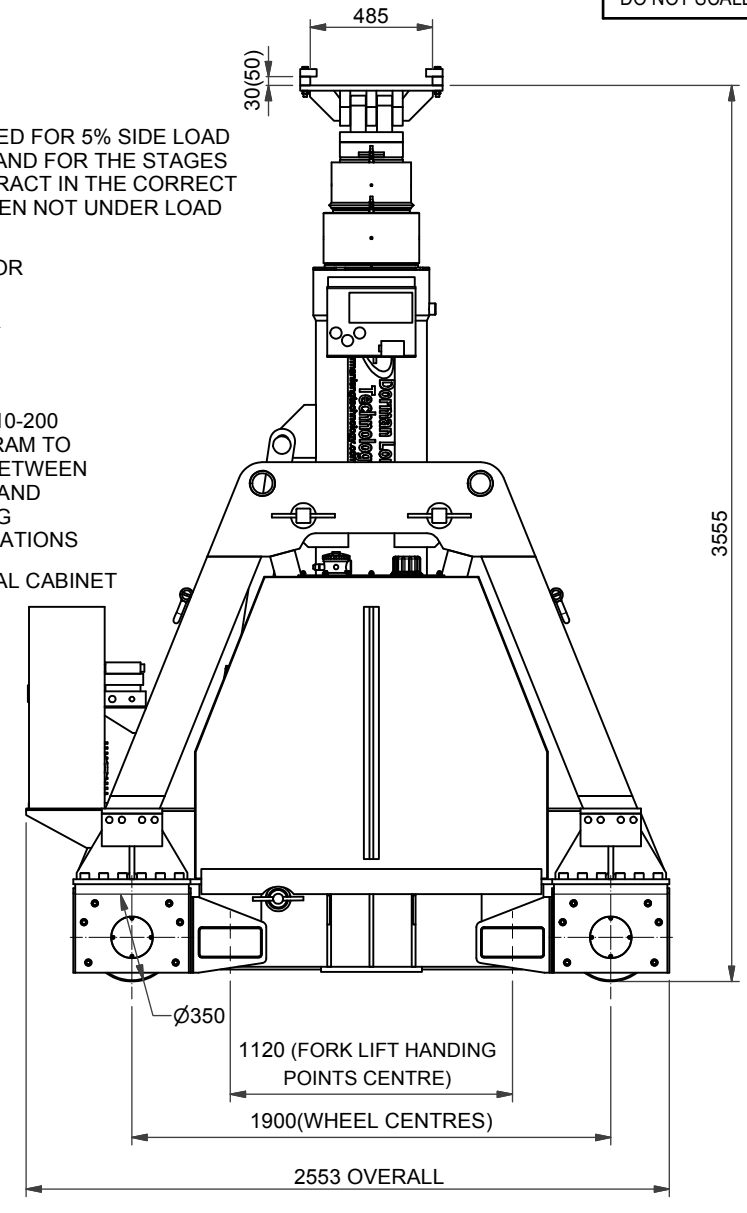
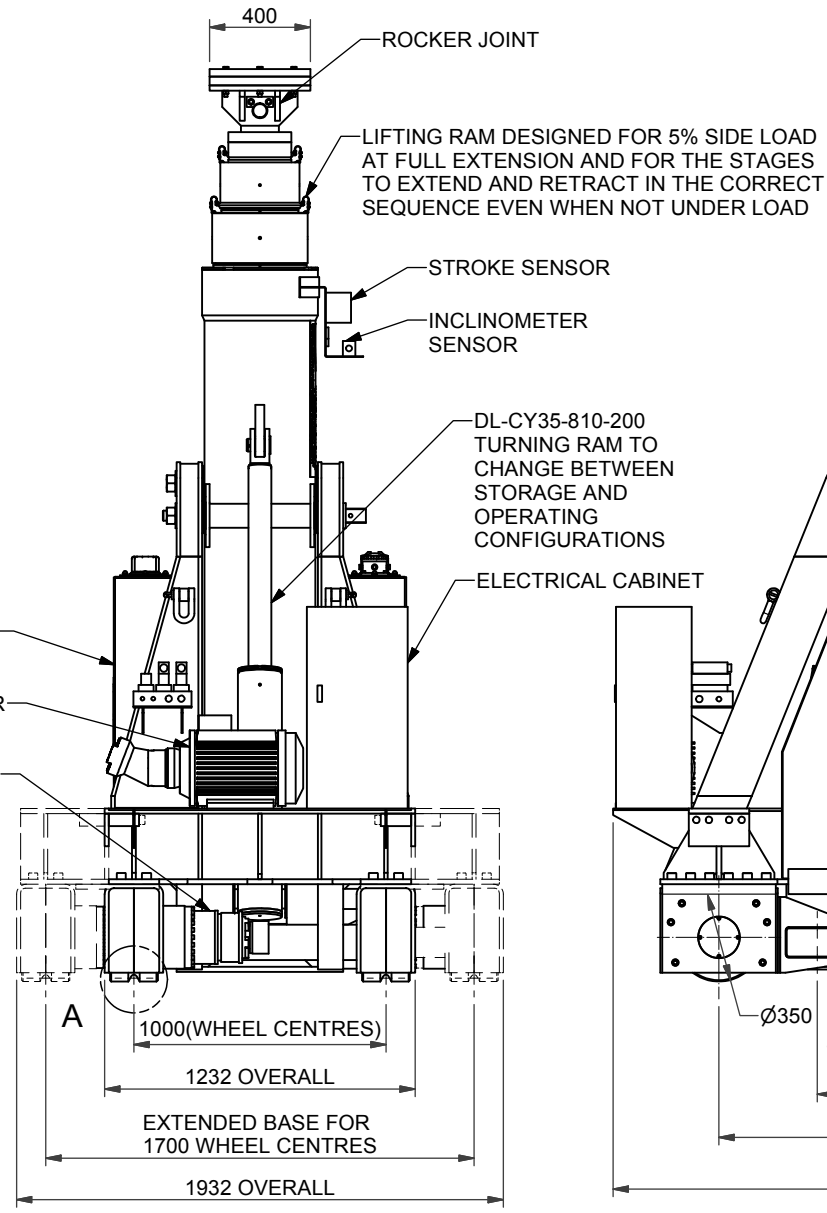
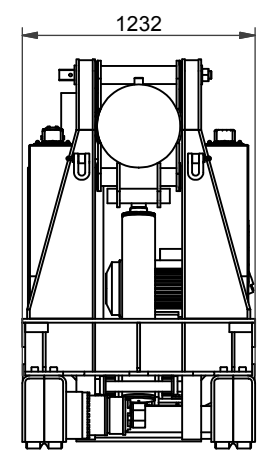
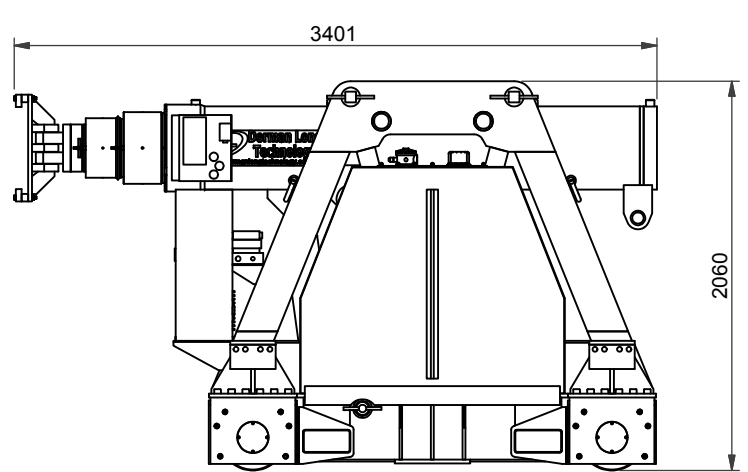
DO NOT SCALE

This drawing has been produced by Dorman Long Technology in accordance with the instructions of the client for their sole and specific use.
 Dorman Long Technology shall not be liable for the use of any information contained on this drawing for any purpose other than that for which it was specifically prepared and provided.
 Should there be any doubt regarding the interpretation of any information given on this drawing, enquiries should be directed to Dorman Long Technology at the address given below before executing such part of the works.

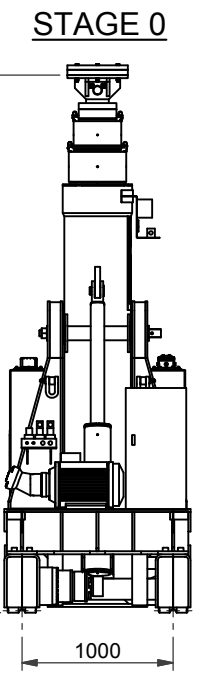
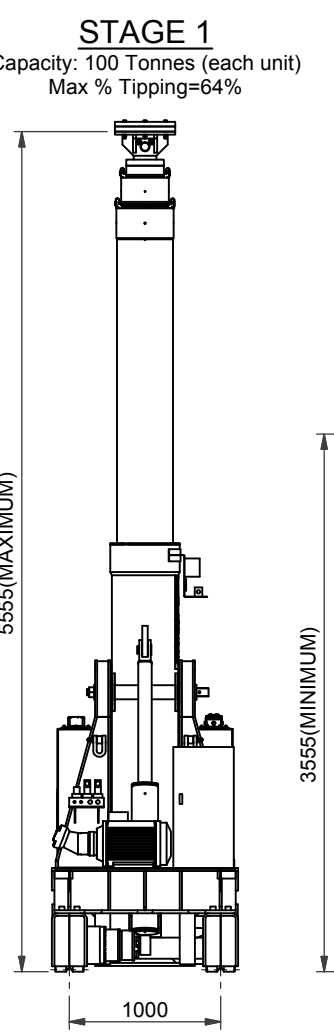
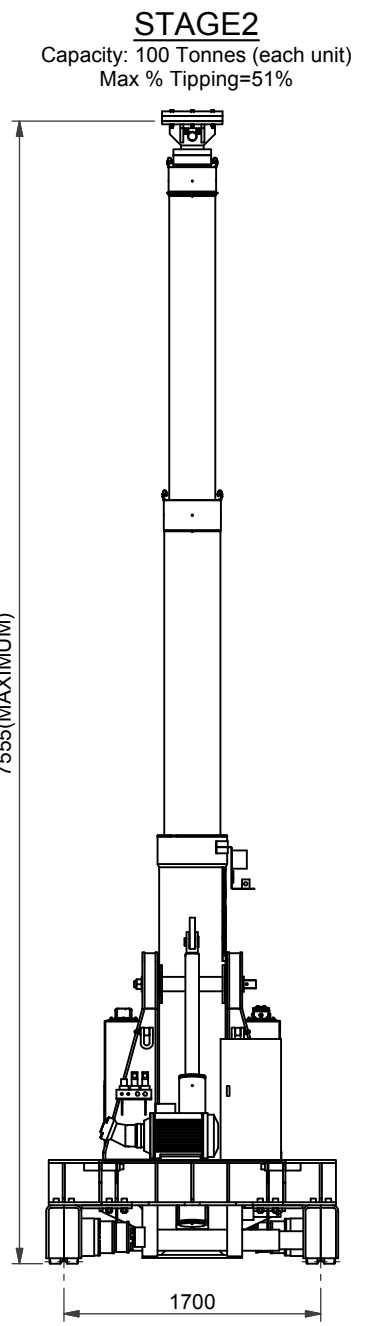
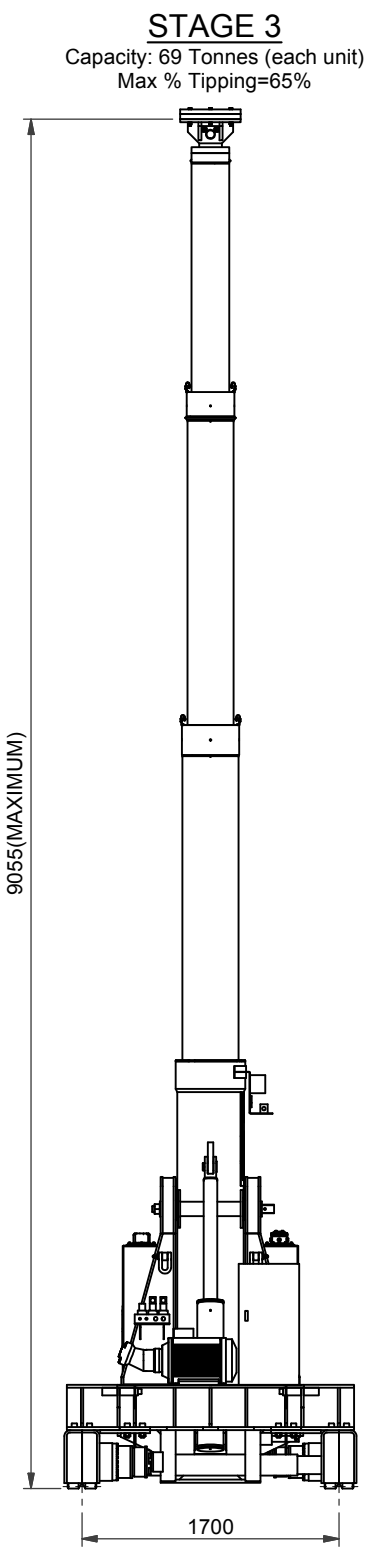
Copyright © Dorman Long Technology

NOTES
SPECIFICATION FOR UNIT

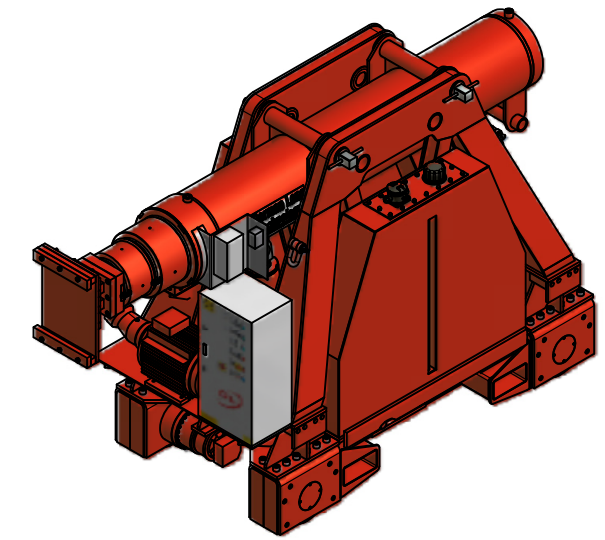
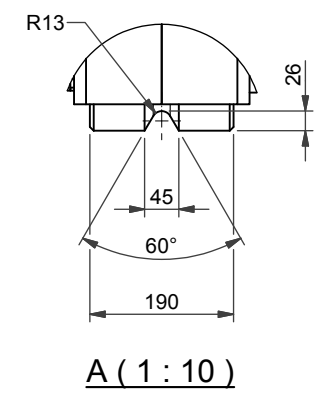
- Safe working load (SWL)
 Stage 1 = 100 tonnes @ 83 bar
 Stage 2 = 100 tonnes @ 120 bar
 Stage 3 = 69 tonnes @ 120 bar
- Test load = 1.25 x SWL at each stage
- Maximum dynamic lateral load = 5% of vertical load
- Maximum track slope in any direction = 1%
- The maximum % tipping figures shown are for a 5% side load at the top of the header beam and a 1% slope in any direction of the track.
- Maximum dynamic wheel load = 454 kN
- Lifting speed = 0.5 m/minute constant for all ram stages
- Lowering speed = 0.5 m/minute constant for all ram stages
- Movement speed = 3.0 m/minute
- Power supply = 380-440V, 50-60 hz, 3 phase + earth.
- Maximum power consumption = 11 kW per unit.
- Control system = central wireless control console plus local pendant controller to each DL-TLG100 unit
- Operating temperature = -20 to +45 °C
- Oil tank size = 2 x 350L = 700L
- Operating weight (inc oil)
 Appr. 6943 kg / 7346 kg



DIMENSIONS FOR TRANSPORT



DIMENSIONS IN USE



BASE RETRACTED STATES IS SHOWN

11	11.05.11	INF	THE FIRST ISSUE	WZY
Rev	Date	Status	Description	By / Chkd

Dorman Long Technology
 The Charles Parker Building
 Midland Road, Higham Ferrers
 Northamptonshire, NN10 8DN
 United Kingdom
 Tel: +44 (0) 1933 319133
 Fax: +44 (0) 1933 319135
 www.dormanlongtechnology.com

Project: DL-TLG100 Telescopic Lifting Gantry

Drawing Title: Details Of DL-TLG100 Telescopic Lifting Unit

Design Eng:	WILL	Checking Eng:	KING
Drawn by:	WZY	Project Eng:	DJD

Original Drawing size: A3	INFORMATION	
Drawing No. DLC-TLG100-002	Sheet	Rev. 11

DO NOT SCALE

This drawing has been produced by Dorman Long Technology in accordance with the instructions of the client for their sole and specific use.

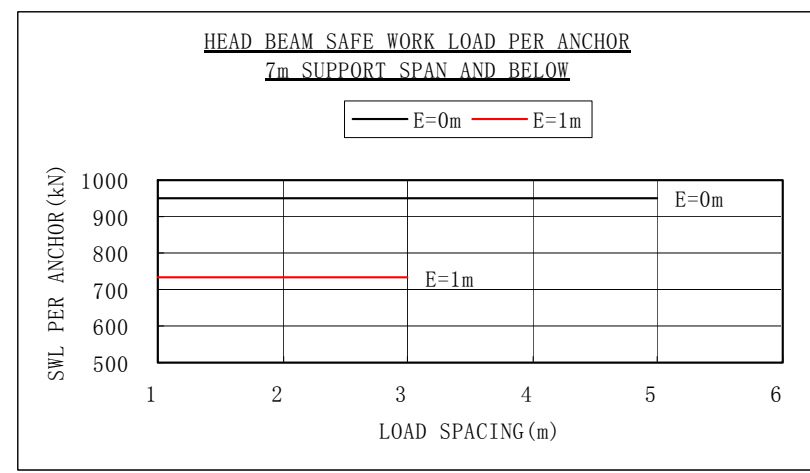
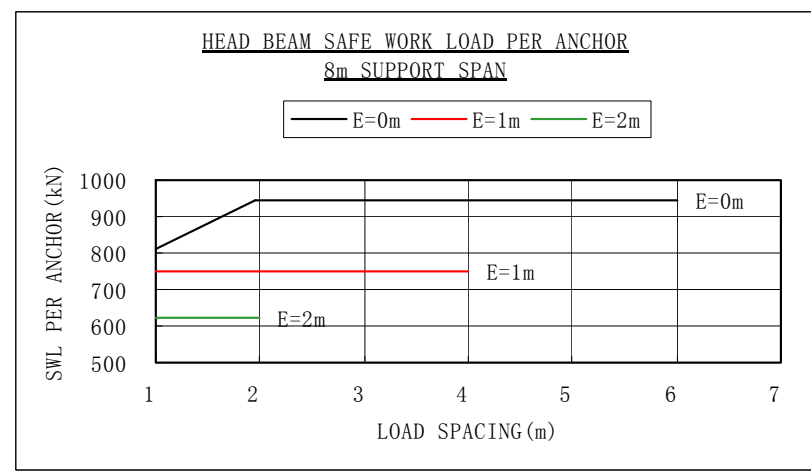
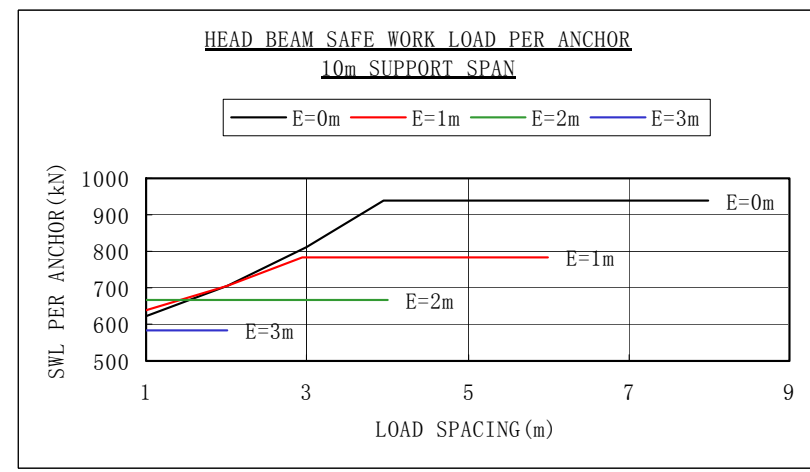
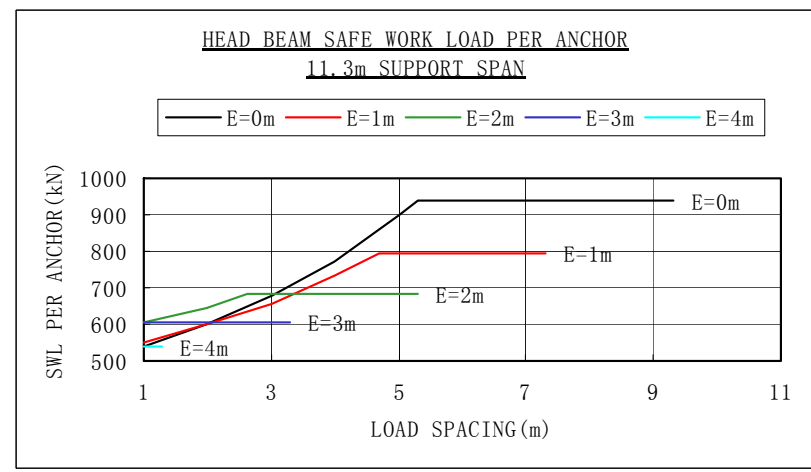
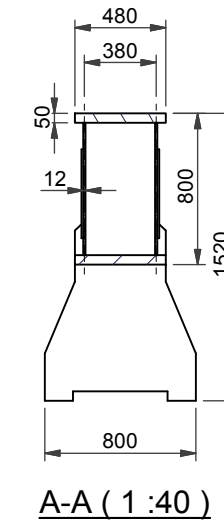
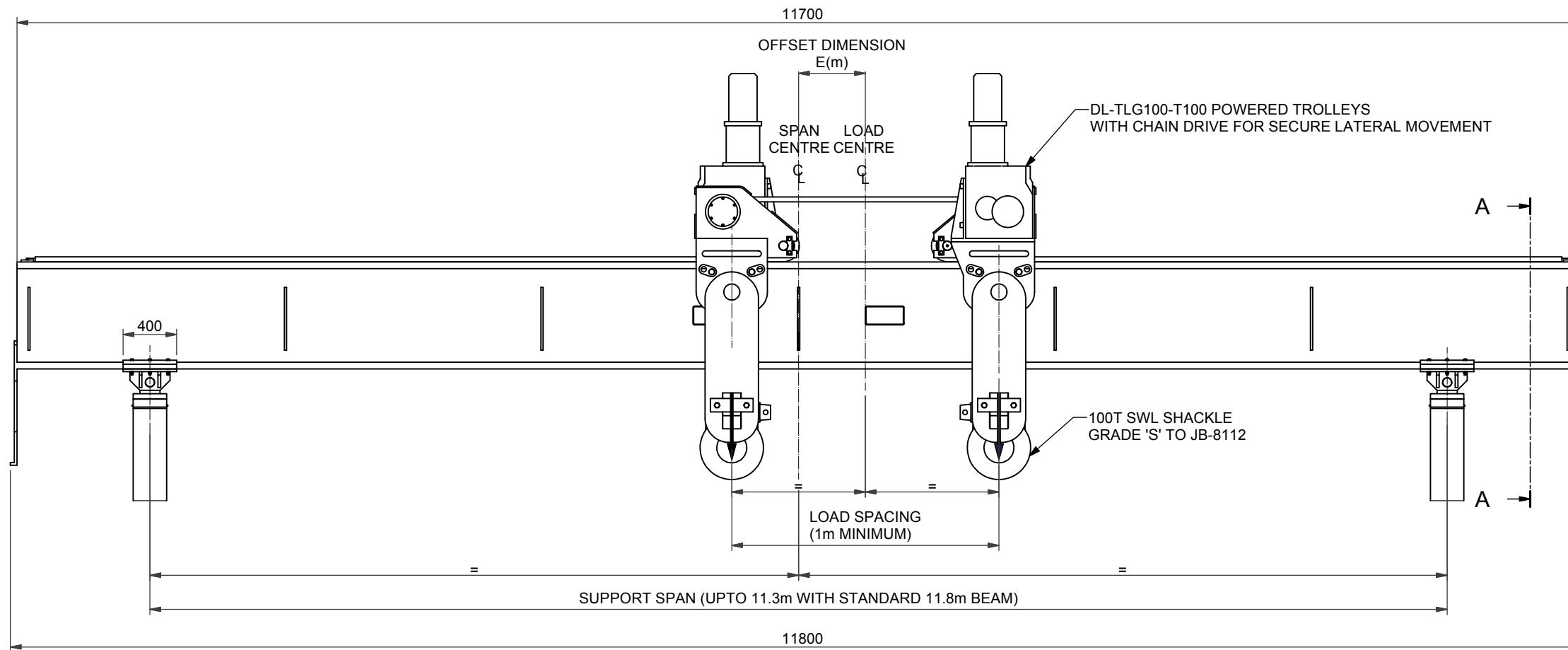
Dorman Long Technology shall not be liable for the use of any information contained on this drawing for any purpose other than that for which it was specifically prepared and provided.

Should there be any doubt regarding the interpretation of any information given on this drawing, enquiries should be directed to Dorman Long Technology at the address given below before executing such part of the works.

Copyright © Dorman Long Technology

NOTES

1. The standard head beam length is 11.8m long to fit into a standard 40ft container. For up to 11.3m track centre.
2. Other non-standard lengths are also available on request.



11	11.05.11	INF	THE FIRST ISSUE	WZY
Rev	Date	Status	Description	By / Chkd

Dorman Long Technology
The Charles Parker Building
Midland Road, Higham Ferrers
Northamptonshire, NN10 8DN
United Kingdom
Tel: +44 (0) 1933 319133
Fax: +44 (0) 1933 319135
www.dormanlongtechnology.com

Project
**DL-TLG100
Telescopic Lifting Gantry**

Drawing Title
**Detail of DL-TLG-HB11.8
Standard Head Beam**

Design Eng: WILL Checking Eng: KING
Drawn by: WZY Project Eng: DJD

Scales (At A3) AS SHOWN Drawing Status
INFORMATION

Original Drawing size: A3
Drawing No. **DLC-TLG100-003** Sheet Rev. **11**

DO NOT SCALE

This drawing has been produced by Dorman Long Technology in accordance with the instructions of the client for their sole and specific use.

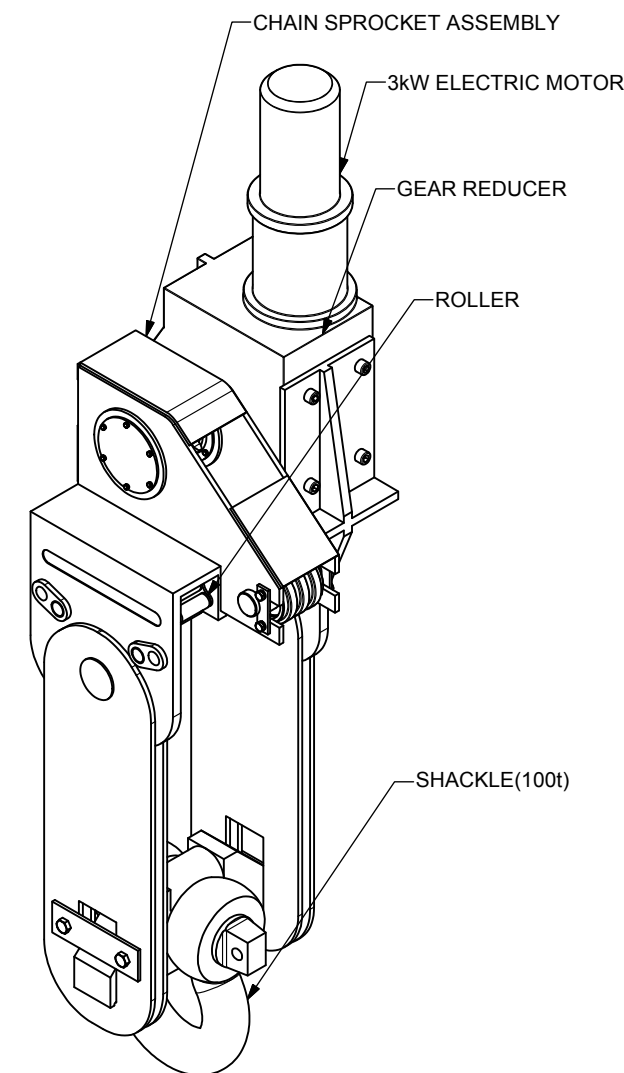
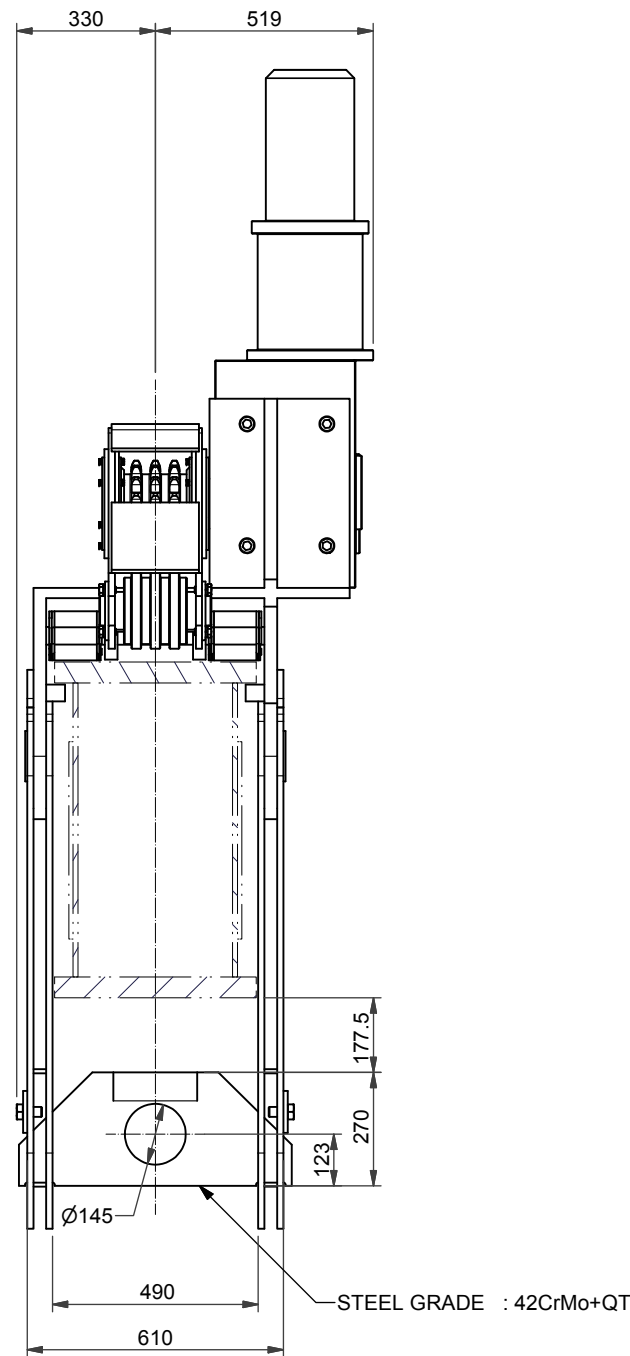
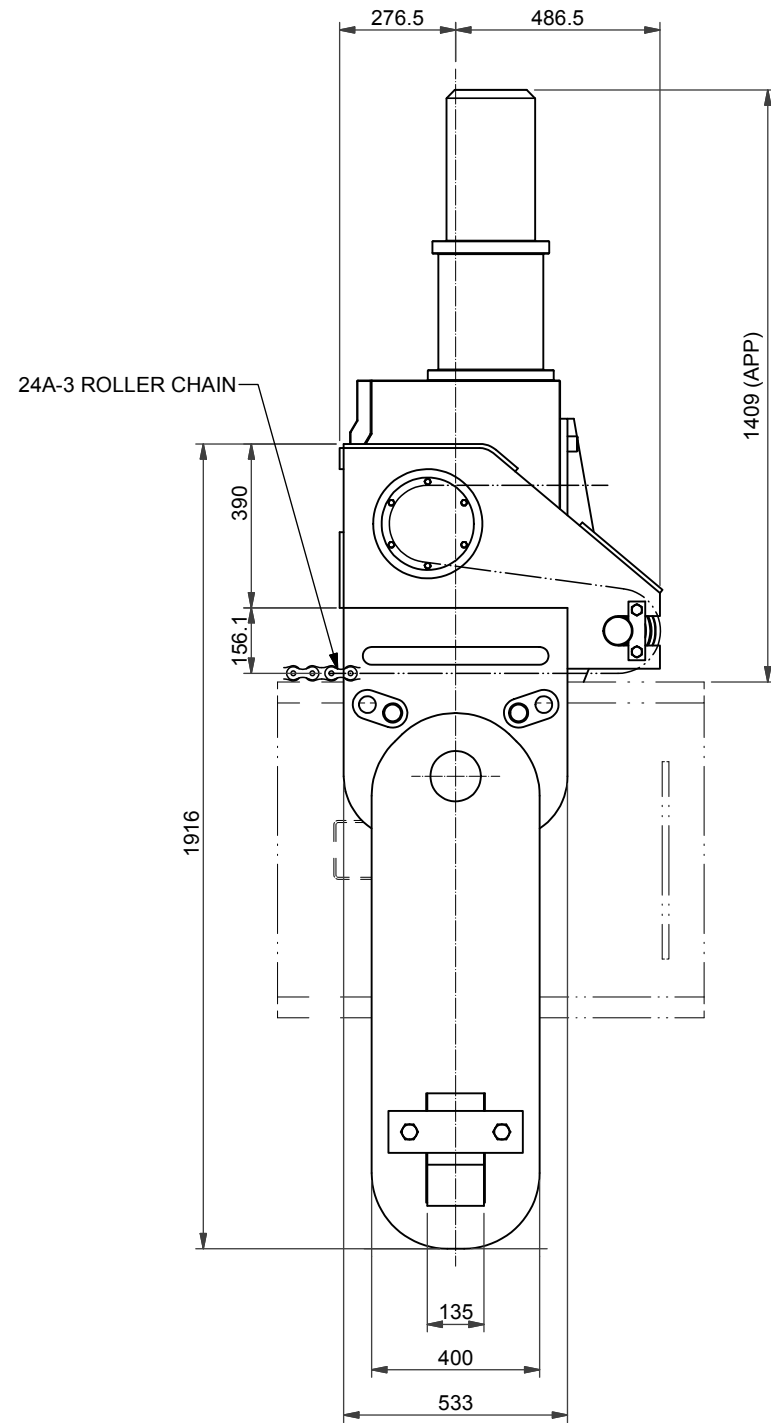
Dorman Long Technology shall not be liable for the use of any information contained on this drawing for any purpose other than that for which it was specifically prepared and provided.

Should there be any doubt regarding the interpretation of any information given on this drawing, enquiries should be directed to Dorman Long Technology at the address given below before executing such part of the works.

Copyright © Dorman Long Technology

NOTES

- 1. SWL=100 tonnes
- 2. Self weight per unit (inc shackle): 2030 kg



Rev	Date	Status	Description	By	Chkd
I1	11.05.11	INF	THE FIRST ISSUE	WZY	



Dorman Long Technology
 The Charles Parker Building
 Midland Road, Higham Ferrers
 Northamptonshire, NN10 8DN
 United Kingdom
 Tel: +44 (0) 1933 319133
 Fax: +44 (0) 1933 319135
 www.dormanlongtechnology.com

Project
DL-TLG100
 Teleopic Lifting Gantry

Drawing Title
 Details of DL-TLG100-T100 Powered Trolley

Design Eng:	WILL	Checking Eng:	KING
Drawn by:	WZY	Project Eng:	DJD

Scales (At A3) AS SHOWN

INFORMATION

Original Drawing size: A3	Drawing No.	Sheet	Rev.
DLC-TLG100-004			11

DO NOT SCALE

This drawing has been produced by Dorman Long Technology in accordance with the instructions of the client for their sole and specific use.

Dorman Long Technology shall not be liable for the use of any information contained on this drawing for any purpose other than that for which it was specifically prepared and provided.

Should there be any doubt regarding the interpretation of any information given on this drawing, enquiries should be directed to Dorman Long Technology at the address given below before executing such part of the works.

Copyright © Dorman Long Technology

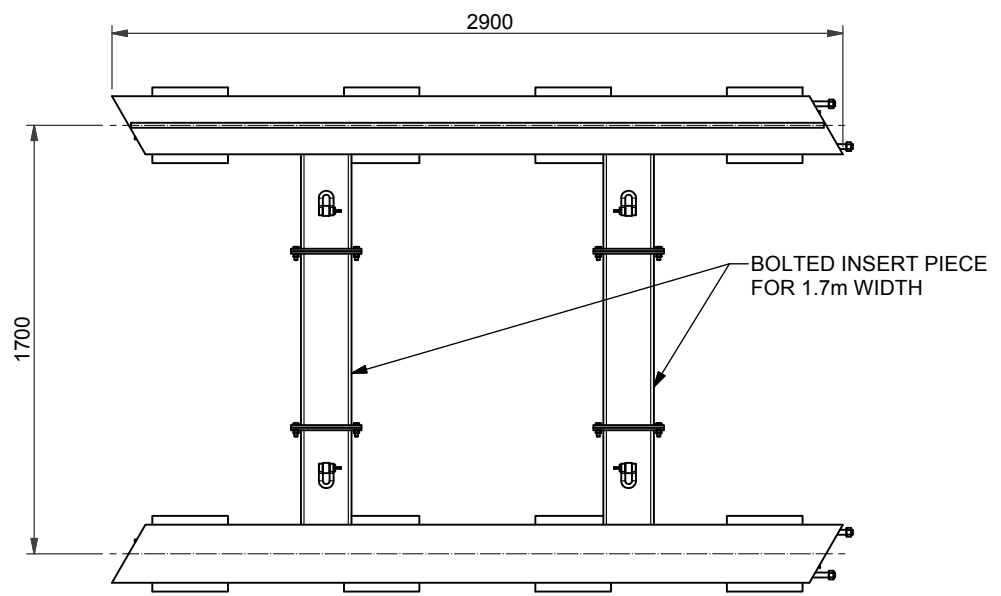
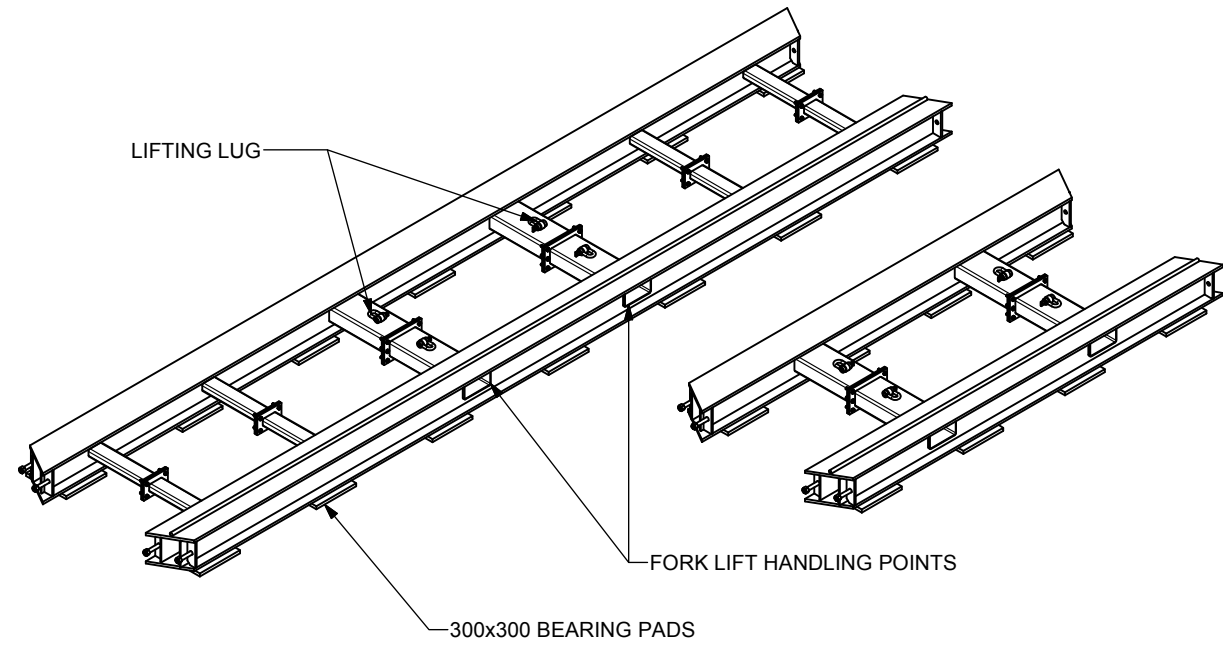
NOTES

Standard track lengths are 5.8 m and 2.9m long, with the option of 1m or 1.7m track centres.

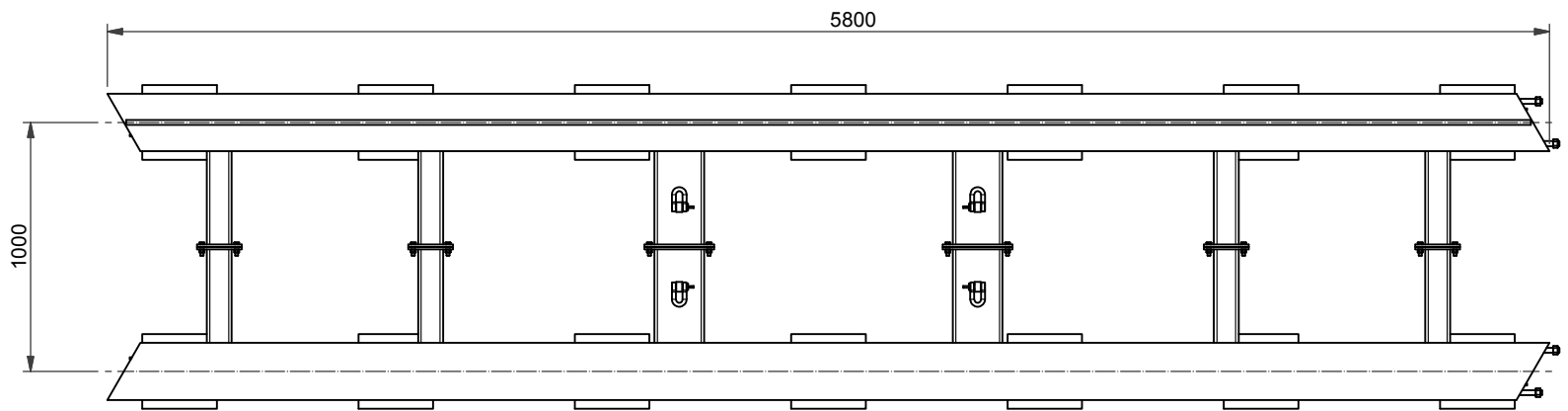
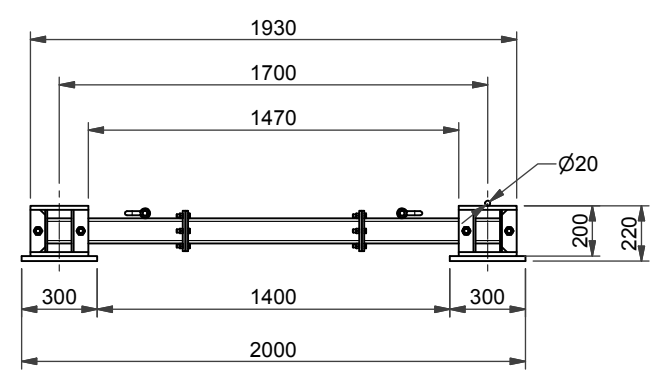
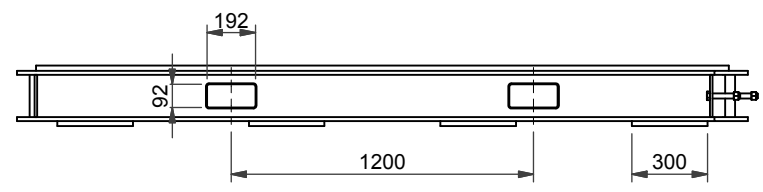
SELF WEIGHT:
 5.8m long x 1.7m centre width: 1269 kg
 5.8m long x 1.0m centre width: 1198 kg
 2.9m long x 1.7m centre width: 639 kg
 2.9m long x 1.0m centre width: 605 kg

TRACK ASSEMBLY REQUIREMENT:
 Max longitudinal slope: 1%
 Max transverse slope: 1%
 Max junction gap: 5mm
 Max junction height difference: 1mm

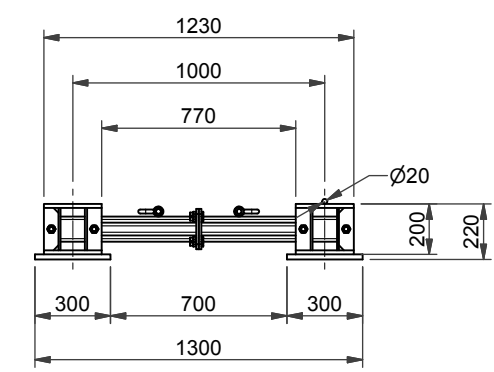
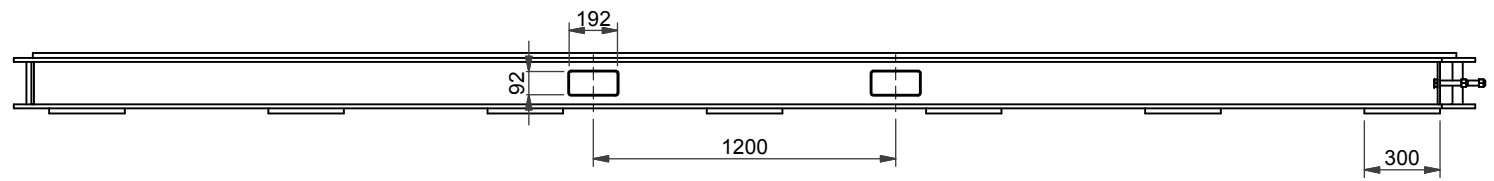
BEARING CONDITION:
 Max bearing pad load=454 kN
 Ground bearing pressure≈5.0 MPa



**STANDARD 2.9m LONG TRACK
(1.7m WIDTH SHOWN)**



**STANDARD 5.8m LONG TRACK
(1.0m WIDTH SHOWN)**



11	11.05.11	INF	THE FIRST ISSUE	WZY
Rev	Date	Status	Description	By Chkd

Dorman Long Technology
 The Charles Parker Building
 Midland Road, Higham Ferrers
 Northamptonshire, NN10 8DN
 United Kingdom
 Tel: +44 (0) 1933 319133
 Fax: +44 (0) 1933 319135
 www.dormanlongtechnology.com

Project: DL-TLG100 Telescopic Lifting Gantry

Drawing Title: Detail of DL-TLG100-R Standard Track Sections

Design Eng:	WILL	Checking Eng:	KING
Drawn by:	WZY	Project Eng:	DJD

Scales (At A3): AS SHOWN

Original Drawing size: A3	INFORMATION	
Drawing No.	Sheet	Rev.
DLC-TLG100-005		11