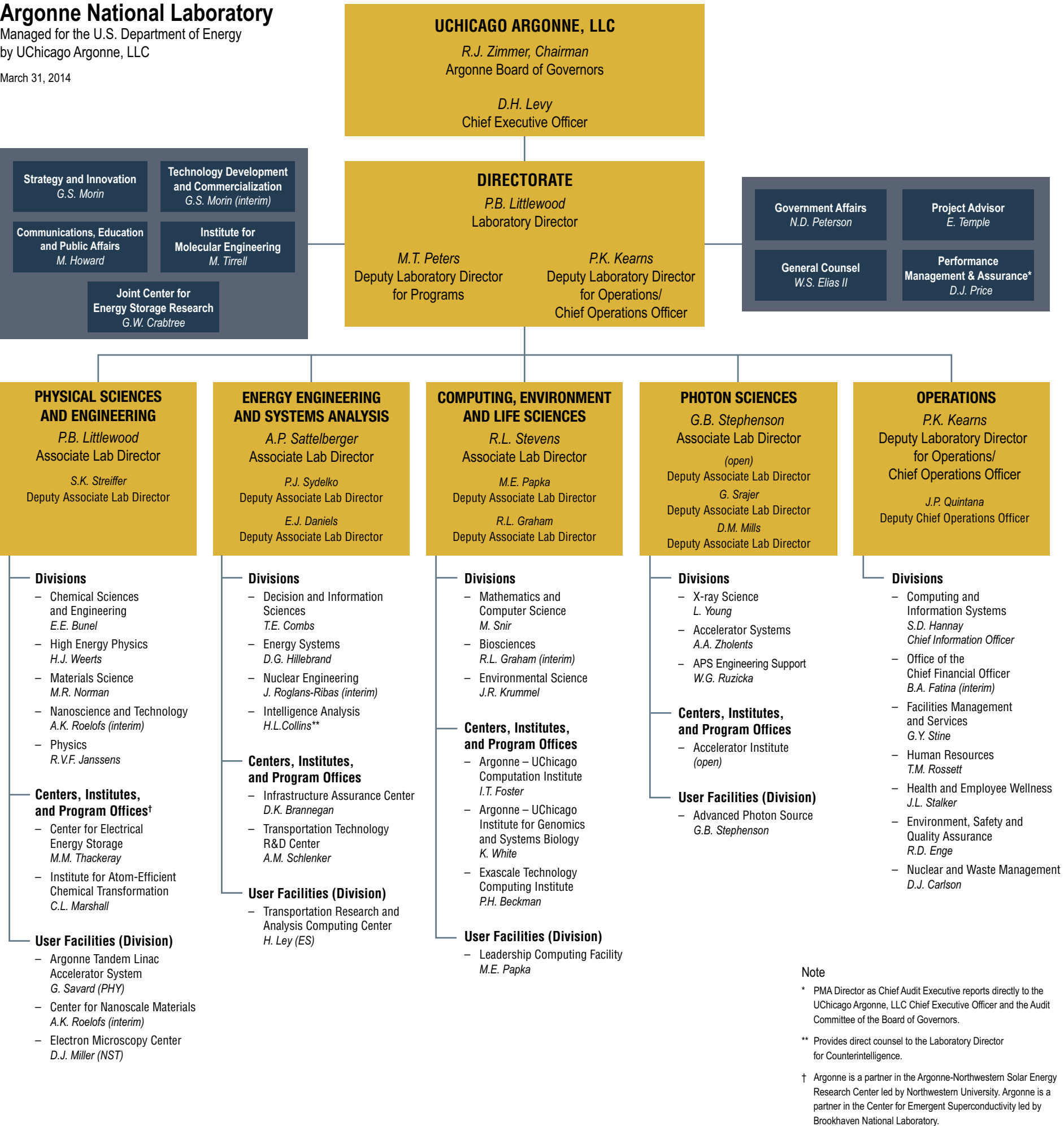


# Argonne National Laboratory

Managed for the U.S. Department of Energy  
by UChicago Argonne, LLC

March 31, 2014



## UChicago ARGONNE, LLC

*R.J. Zimmer, Chairman*  
Argonne Board of Governors

*D.H. Levy*  
Chief Executive Officer

## DIRECTORATE

*P.B. Littlewood*  
Laboratory Director

*M.T. Peters*  
Deputy Laboratory Director  
for Programs

*P.K. Kearns*  
Deputy Laboratory Director  
for Operations/  
Chief Operations Officer

**Strategy and Innovation**  
*G.S. Morin*

**Technology Development  
and Commercialization**  
*G.S. Morin (interim)*

**Communications, Education  
and Public Affairs**  
*M. Howard*

**Institute for  
Molecular Engineering**  
*M. Tirrell*

**Joint Center for  
Energy Storage Research**  
*G.W. Crabtree*

**Government Affairs**  
*N.D. Peterson*

**Project Advisor**  
*E. Temple*

**General Counsel**  
*W.S. Elias II*

**Performance  
Management & Assurance\***  
*D.J. Price*

## PHYSICAL SCIENCES AND ENGINEERING

*P.B. Littlewood*  
Associate Lab Director

*S.K. Streiffer*  
Deputy Associate Lab Director

### Divisions

- Chemical Sciences and Engineering  
*E.E. Bunel*
- High Energy Physics  
*H.J. Weerts*
- Materials Science  
*M.R. Norman*
- Nanoscience and Technology  
*A.K. Roelofs (interim)*
- Physics  
*R.V.F. Janssens*

### Centers, Institutes, and Program Offices†

- Center for Electrical Energy Storage  
*M.M. Thackeray*
- Institute for Atom-Efficient Chemical Transformation  
*C.L. Marshall*

### User Facilities (Division)

- Argonne Tandem Linac Accelerator System  
*G. Savard (PHY)*
- Center for Nanoscale Materials  
*A.K. Roelofs (interim)*
- Electron Microscopy Center  
*D.J. Miller (NST)*

## ENERGY ENGINEERING AND SYSTEMS ANALYSIS

*A.P. Sattelberger*  
Associate Lab Director

*P.J. Sydelko*  
Deputy Associate Lab Director

*E.J. Daniels*  
Deputy Associate Lab Director

### Divisions

- Decision and Information Sciences  
*T.E. Combs*
- Energy Systems  
*D.G. Hillebrand*
- Nuclear Engineering  
*J. Roglans-Ribas (interim)*
- Intelligence Analysis  
*H.L. Collins\*\**

### Centers, Institutes, and Program Offices

- Infrastructure Assurance Center  
*D.K. Brannegan*
- Transportation Technology R&D Center  
*A.M. Schlenker*

### User Facilities (Division)

- Transportation Research and Analysis Computing Center  
*H. Ley (ES)*

## COMPUTING, ENVIRONMENT AND LIFE SCIENCES

*R.L. Stevens*  
Associate Lab Director

*M.E. Papka*  
Deputy Associate Lab Director

*R.L. Graham*  
Deputy Associate Lab Director

### Divisions

- Mathematics and Computer Science  
*M. Snir*
- Biosciences  
*R.L. Graham (interim)*
- Environmental Science  
*J.R. Krummel*

### Centers, Institutes, and Program Offices

- Argonne – UChicago Computation Institute  
*I.T. Foster*
- Argonne – UChicago Institute for Genomics and Systems Biology  
*K. White*
- Exascale Technology Computing Institute  
*P.H. Beckman*

### User Facilities (Division)

- Leadership Computing Facility  
*M.E. Papka*

## PHOTON SCIENCES

*G.B. Stephenson*  
Associate Lab Director

*(open)*  
Deputy Associate Lab Director

*G. Srajer*  
Deputy Associate Lab Director  
*D.M. Mills*  
Deputy Associate Lab Director

### Divisions

- X-ray Science  
*L. Young*
- Accelerator Systems  
*A.A. Zholents*
- APS Engineering Support  
*W.G. Ruzicka*

### Centers, Institutes, and Program Offices

- Accelerator Institute  
*(open)*

### User Facilities (Division)

- Advanced Photon Source  
*G.B. Stephenson*

## OPERATIONS

*P.K. Kearns*  
Deputy Laboratory Director  
for Operations/  
Chief Operations Officer

*J.P. Quintana*  
Deputy Chief Operations Officer

### Divisions

- Computing and Information Systems  
*S.D. Hannay*  
Chief Information Officer
- Office of the Chief Financial Officer  
*B.A. Fatina (interim)*
- Facilities Management and Services  
*G.Y. Stine*
- Human Resources  
*T.M. Rossett*
- Health and Employee Wellness  
*J.L. Stalker*
- Environment, Safety and Quality Assurance  
*R.D. Enge*
- Nuclear and Waste Management  
*D.J. Carlson*

### Note

\* PMA Director as Chief Audit Executive reports directly to the UChicago Argonne, LLC Chief Executive Officer and the Audit Committee of the Board of Governors.

\*\* Provides direct counsel to the Laboratory Director for Counterintelligence.

† Argonne is a partner in the Argonne-Northwestern Solar Energy Research Center led by Northwestern University. Argonne is a partner in the Center for Emergent Superconductivity led by Brookhaven National Laboratory.