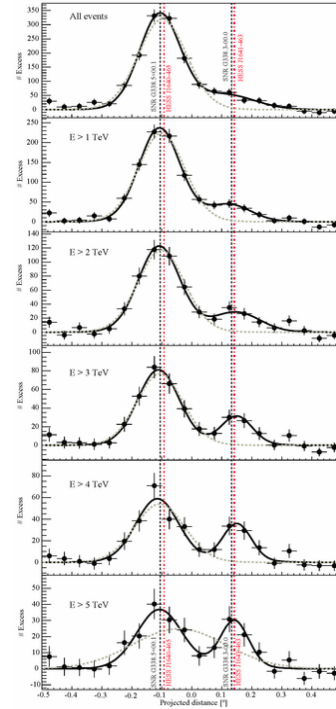
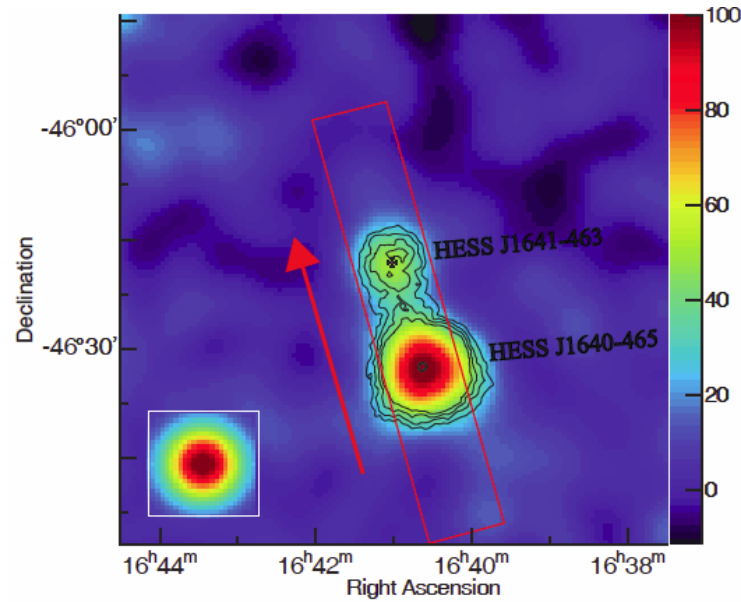


Molecular gas towards HESS J1640-465 & HESS J1641-463

James Lau
University of Adelaide



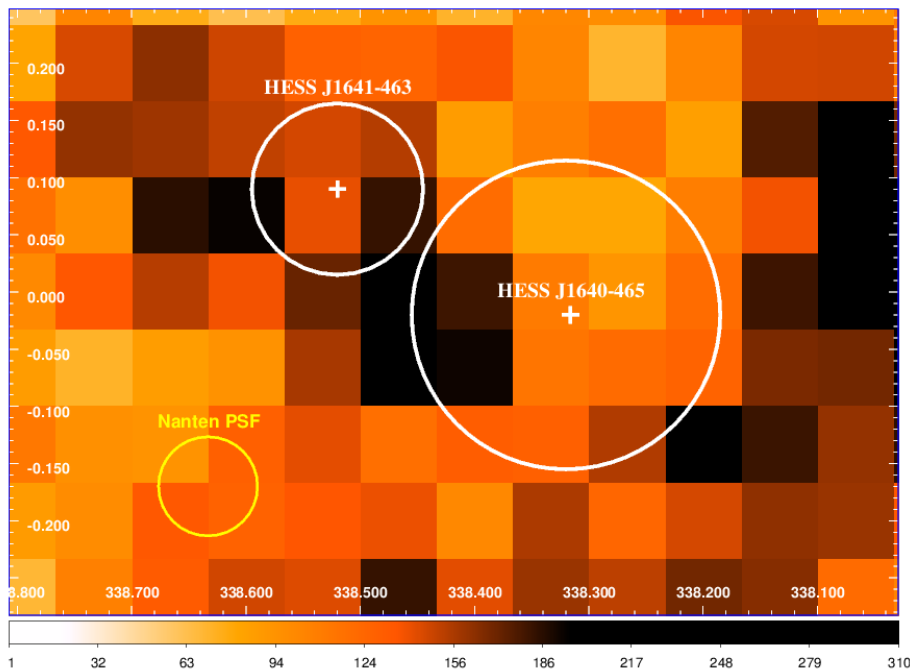
- TEV γ -ray origin scenario: Hadronic or leptonic?
- If hadronic origin scenario (p-p collisions) expect spatial correlation with gas.



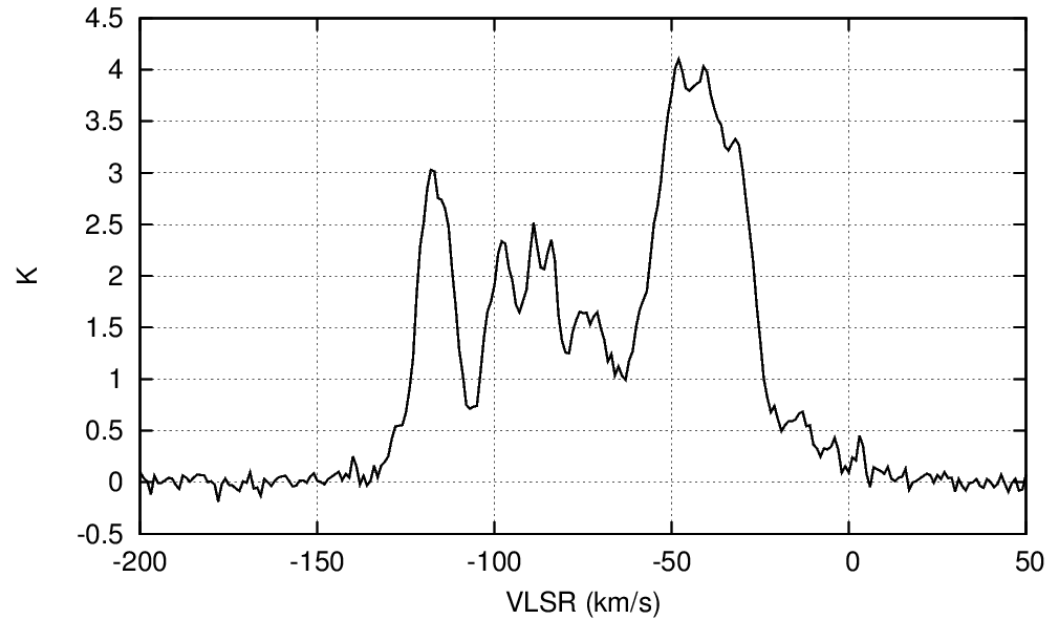
Nanten



Mopra

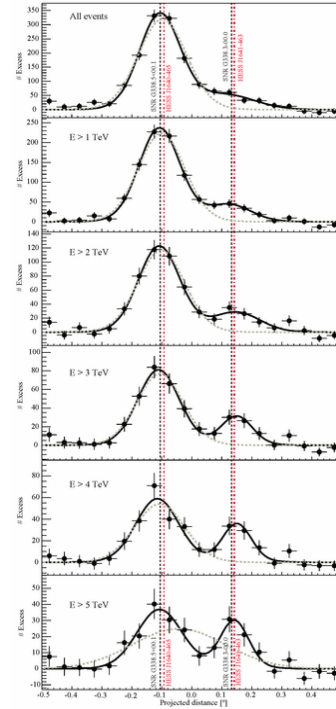
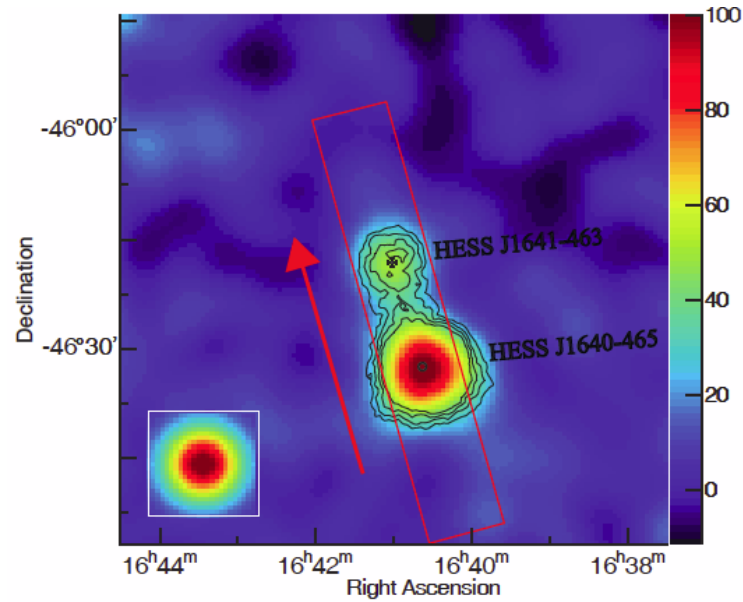


CO(1-0) Spectrum HESS J1640-465



Molecular gas towards HESS J1640-465 & HESS J1641-463

James Lau
University of Adelaide



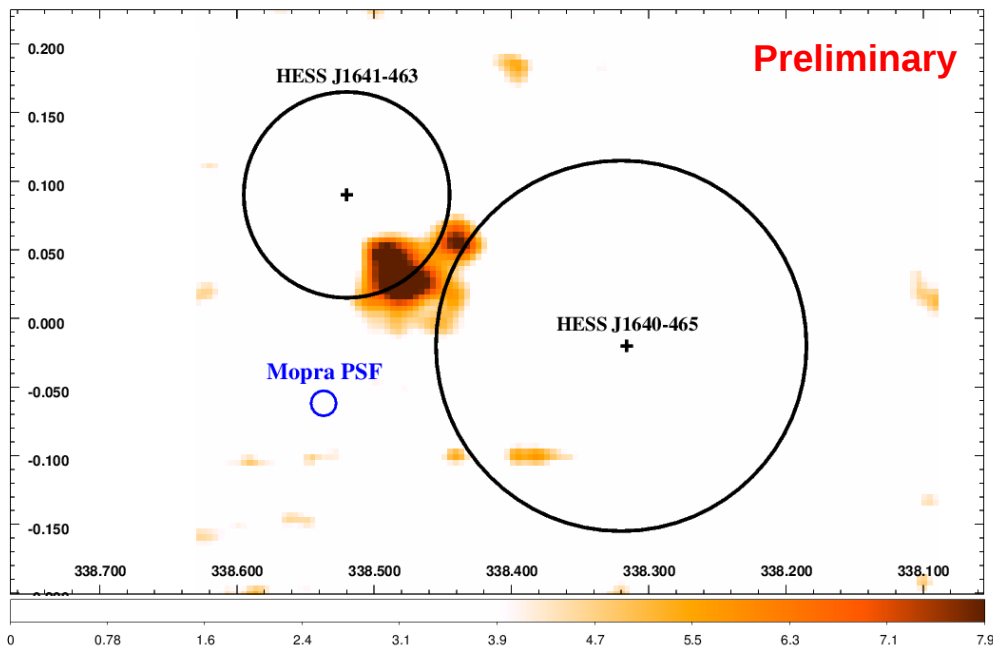
- TEV γ -ray origin scenario: Hadronic or leptonic?
- If hadronic origin scenario (p-p collisions) expect spatial correlation with gas.



Nanten



Mopra



CS(1-0) Mopra data

