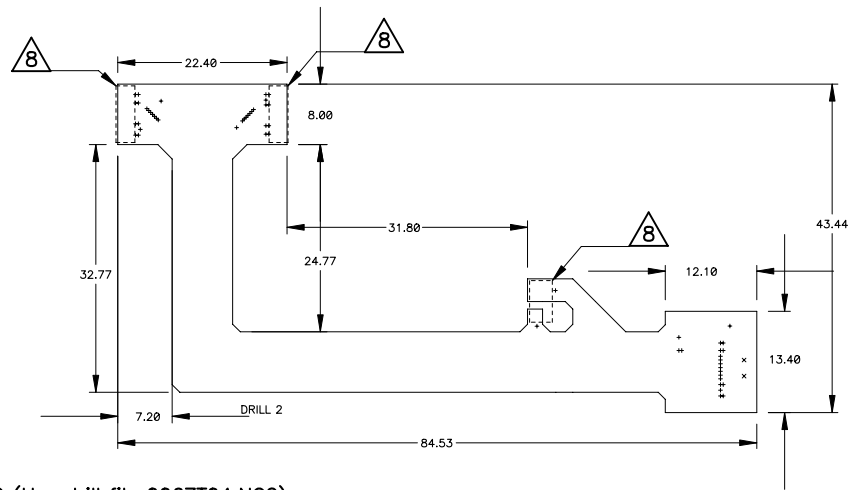
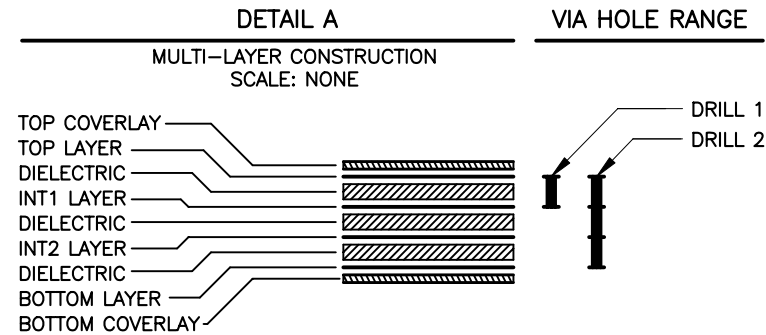


REVISIONS			
REV	DESCRIPTION	DATE	APPROVED

- NOTES:
1. BASE MATERIAL SHALL BE POLYIMIDE 51 UM THK.
  2. TRACE LAYERS TO BE 1/3 OZ. COPPER.
  3. PHOTOIMAGEABLE COVERCOAT 38 UM THK BOTH SIDES.
  4. FABRICATE BOARDS IN ACCORDANCE WITH IPC 6013, CLASS 2.
  5. FABRICATION PROCESS SHALL BE UL APPROVED AND PCB SHALL BE IDENTIFIED WITH MANUFACTURERS APPROVED LOGO AND TYPE DESIGNATION IN ETCH.
  6. CONSTRUCTION OF BOARD AS SHOWN IN DETAIL "A".
  7. FOR ARTWORK SEE DWG NO. 0067T0403.
  8. FINISH FOR PADS IN AREAS INDICATED TO BE 0.06-0.08 UM IMMERSION (BONDABLE) GOLD OVER 2.5 - 3.8 UM ELECTROLESS NICKEL.
  9. ALL OTHER EXPOSED PLATED-THROUGH HOLES, PADS AND CONDUCTORS SHALL BE SOLDER COATED OR FUSED TIN-LEAD PLATED 8 UM MIN THICKNESS.

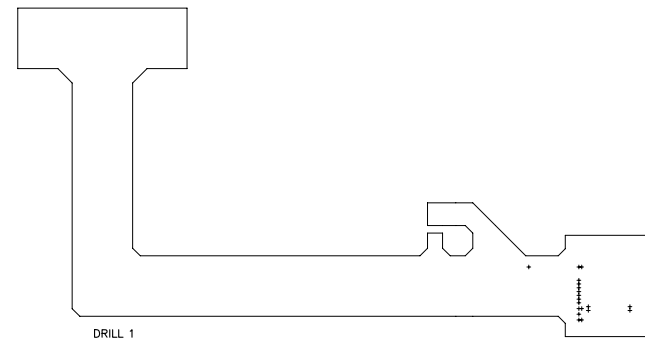


DRILL 2 (Use drill file 0067T04.NC2)

Drill Symbol Table for Layers 1 - 4		
Hole Dia (mm)	Symbol	Quantity
0.15	+	56
0.81	X	2

UNLESS OTHERWISE SPECIFIED DIMENSIONS AND TOLERANCES ARE IN MILLIMETERS AND APPLY TO THE FINISHED PART	CONTRACT NO.		UNIVERSITY OF NEW MEXICO	
	DRAWN: J. BEHRENDT DATE: 4/23/08 APPROVED: M. HOEFERKAMP DATE: - APPROVED: S. SEIDEL DATE: - APPROVED: _____ DATE: _____		DEPARTMENT OF PHYSICS AND ASTRONOMY ELECTRONICS SHOP ALBUQUERQUE, NEW MEXICO, USA 87131	
<b>TOLERANCE ON:</b> 2 PLACE DEC: ±0.05   3 PLACE DEC: ±0.01   ANGLES: ±1/2°	TITLE: <b>SENSOR CABLE FABRICATION</b>			
MATL: 1 2 3	APPROVED: _____ DATE: _____	SIZE: <b>A</b>	DWG NO: <b>0067T0402</b>	REV: <b>-</b>
FINISH: 8 9	APPROVED: _____ DATE: _____	SCALE: 1/1	SHEET 1 OF 2	

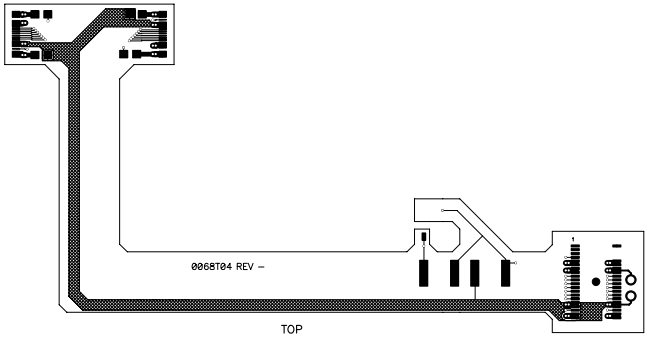
DWG FILENAME: 0067t04.pcb  
 PLOTTED: Thu Apr 24, 2008 13:16:08




DRILL 1 (Use drill file 0067T04.NC1)

Drill Symbol Table for Layers 1 & 2		
Hole Dia (mm)	Symbol	Quantity
0.15	+	19

REVISIONS			
REV	DESCRIPTION	DATE	APPROVED



<p>UNLESS OTHERWISE SPECIFIED DIMENSIONS AND TOLERANCES ARE IN MILLIMETERS AND APPLY TO THE FINISHED PART</p>	CONTRACT NO.		 <p>UNIVERSITY OF NEW MEXICO DEPARTMENT OF PHYSICS AND ASTRONOMY ELECTRONICS SHOP ALBUQUERQUE, NEW MEXICO, USA 87131</p>	
	<p>2 PLACE DEC</p> $\pm 0.05$	<p>3 PLACE DEC</p> $\pm 0.01$		<p>ANGLES</p> $\pm 1/2^\circ$
	<p>TOLERANCE ON:</p>			
	<p>MATL</p>			
<p>FINISH</p>		<p>DRAWN</p> <p>J. BEHRENDT</p>	<p>DATE</p> <p>4/23/08</p>	
<p>DWG FILENAME</p> <p>0067t04.pcb</p>		<p>APPROVED</p> <p>M. HOEFERKAMP</p>	<p>DATE</p> <p>-</p>	
<p>PLOTTED</p> <p>Thu Apr 24, 2008 13:16:08</p>		<p>APPROVED</p> <p>S. SEIDEL</p>	<p>DATE</p> <p>-</p>	
		<p>APPROVED</p>	<p>DATE</p>	
		<p>SIZE</p> <p><b>A</b></p>	<p>DWG NO</p> <p>0067T0403</p>	
		<p>SCALE</p> <p>1/1</p>	<p>REV</p> <p>-</p>	
		<p>SHEET 1 OF 6</p>		

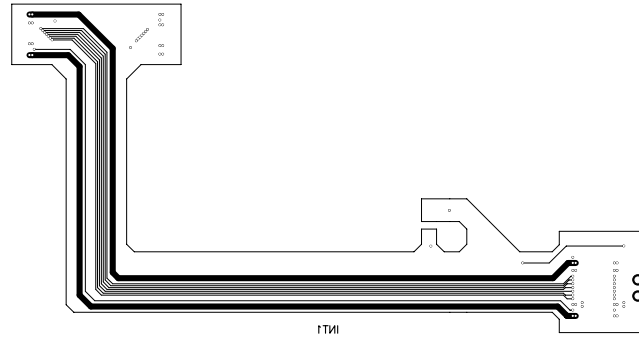


UNIVERSITY OF NEW MEXICO  
DEPARTMENT OF PHYSICS AND ASTRONOMY  
ELECTRONICS SHOP  
ALBUQUERQUE, NEW MEXICO, USA 87131

**SENSOR CABLE  
ARTWORK**

SIZE **A** DWG NO **0067T0403** REV **-**

SCALE 1/1 SHEET 1 OF 6

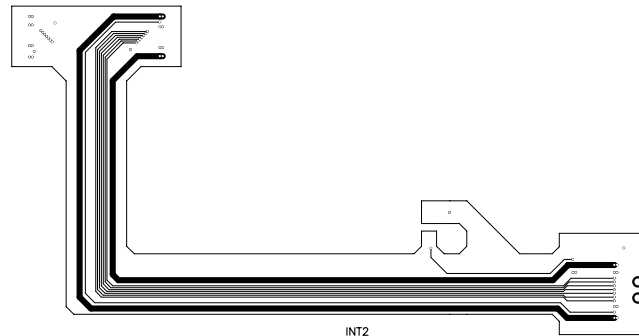


FTM

# ARTWORK

PLOTTED  
Thu Apr 24, 2008 13:16:09

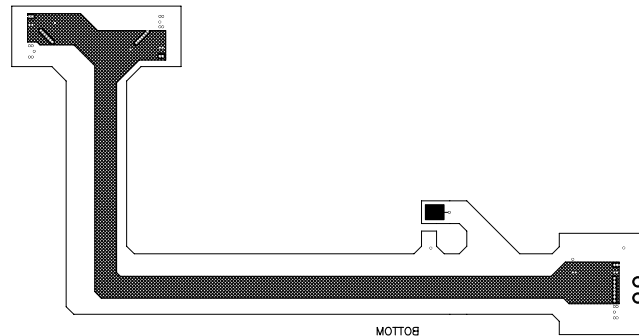
SIZE <b>A</b>	_____	DWG NO <b>0067T0403</b>	REV <b>-</b>
SCALE 1/1	_____	SHEET 2	



# ARTWORK

PLOTTED  
Thu Apr 24, 2008 13:16:09

SIZE <b>A</b>	_____	DWG NO <b>0067T0403</b>	REV <b>—</b>
SCALE 1/1	_____	SHEET 3	

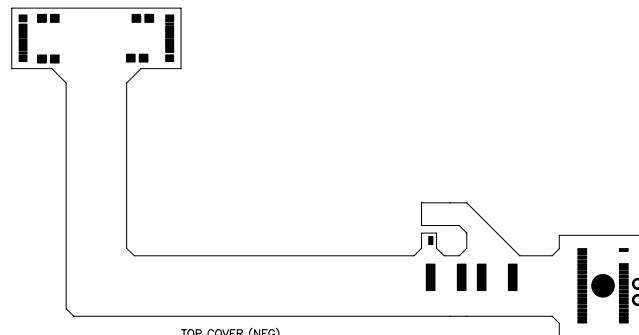


MOTTO

# ARTWORK

PLOTTED  
Thu Apr 24, 2008 13:16:09

SIZE <b>A</b>	_____	DWG NO <b>0067T0403</b>	REV <b>—</b>
SCALE 1/1	_____	SHEET 4	

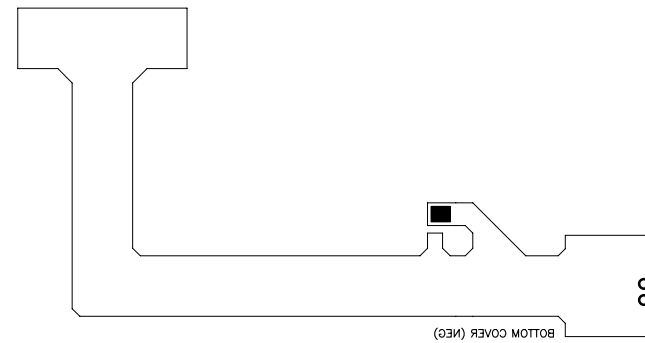


TOP COVER (NEG)

## ARTWORK

PLOTTED  
Thu Apr 24, 2008 13:16:10

SIZE <b>A</b>	_____	DWG NO <b>0067T0403</b>	REV <b>-</b>
SCALE 1/1	_____	SHEET 5	



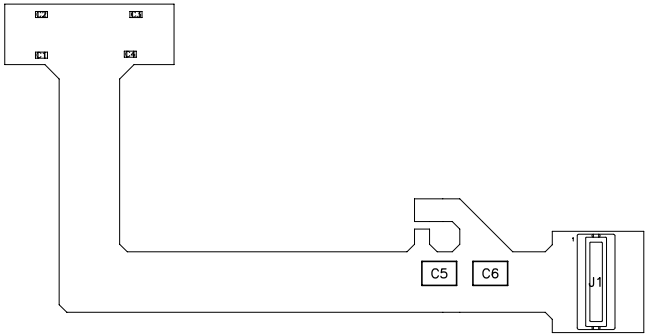
# ARTWORK


PLOTTED  
Thu Apr 24, 2008 13:16:10

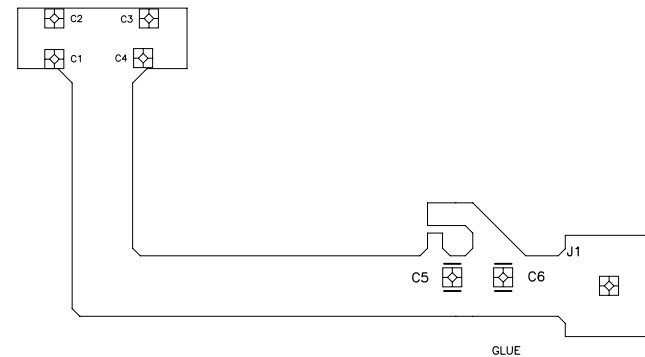
SIZE <b>A</b>	_____	DWG NO <b>0067T0403</b>	REV <b>—</b>
SCALE 1/1	_____	SHEET 6	



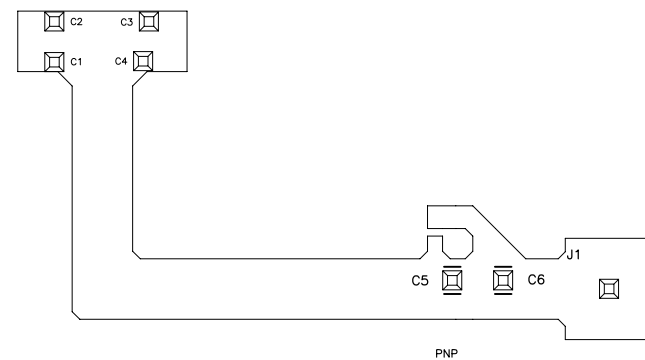
REVISIONS			
REV	DESCRIPTION	DATE	APPROVED



<p>UNLESS OTHERWISE SPECIFIED DIMENSIONS AND TOLERANCES ARE IN MILLIMETERS AND APPLY TO THE FINISHED PART</p>	CONTRACT NO.		 <p>UNIVERSITY OF NEW MEXICO DEPARTMENT OF PHYSICS AND ASTRONOMY ELECTRONICS SHOP ALBUQUERQUE, NEW MEXICO, USA 87131</p>							
	<p>TOLERANCE ON:</p> <table border="1"> <tr> <td>2 PLACE DEC</td> <td>3 PLACE DEC</td> <td>ANGLES</td> </tr> <tr> <td>±0.05</td> <td>±0.01</td> <td>±1/2°</td> </tr> </table>	2 PLACE DEC		3 PLACE DEC	ANGLES	±0.05	±0.01	±1/2°	<p>DRAWN</p> <p>J. BEHRENDT</p>	<p>DATE</p> <p>4/23/08</p>
	2 PLACE DEC	3 PLACE DEC		ANGLES						
	±0.05	±0.01		±1/2°						
<p>APPROVED</p> <p>M. HOEFERKAMP</p>		<p>DATE</p> <p>—</p>								
<p>APPROVED</p> <p>S. SEIDEL</p>		<p>DATE</p> <p>—</p>								
<p>MATL</p>		<p>APPROVED</p>	<p>DATE</p>	<p>TITLE</p> <p><b>SENSOR CABLE ASSEMBLY</b></p>						
<p>FINISH</p>		<p>APPROVED</p>	<p>DATE</p>	<p>SIZE</p> <p><b>A</b></p>						
<p>DWG FILENAME</p> <p>0067t04.pcb</p>		<p>DWG NO</p> <p><b>0067T0404</b></p>		<p>REV</p> <p><b>—</b></p>						
<p>PLOTTED</p> <p>Thu Apr 24, 2008 13:16:10</p>		<p>SCALE</p> <p>1/1</p>		<p>SHEET 1 OF 3</p>						



Glue Dot Locations  
Use File 0067T04.GLU



Pick & Place Locations  
Use File 0067T04.PNP