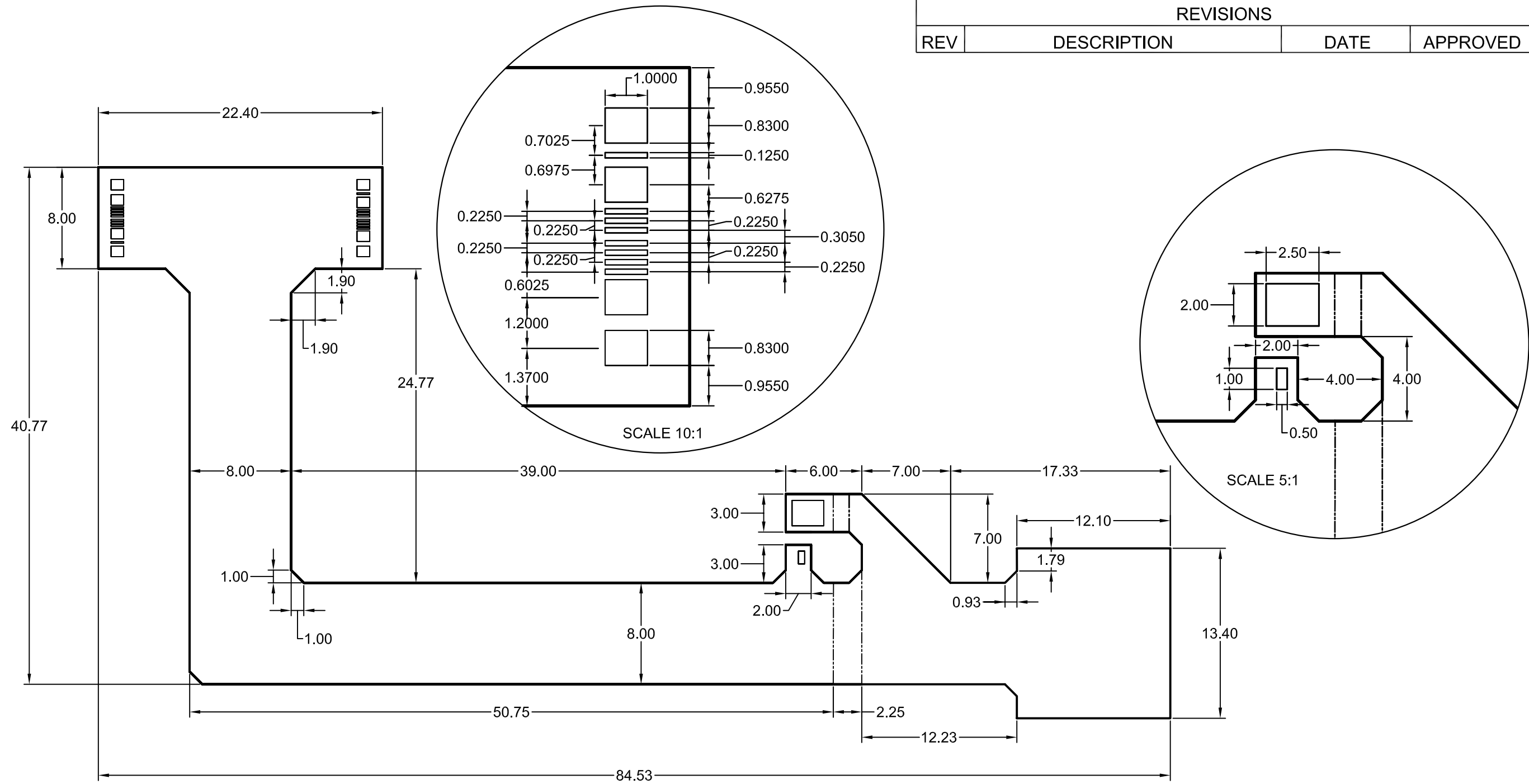


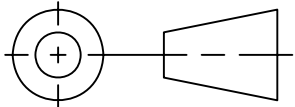

Pigtail Cable Specifications

- 1) Physical Dimensions: Should be compatible with sensor dimensions, see figure
- 2) Thickness: approximately 250 μm
- 3) Material: Kapton
- 4) Connectivity:
 - a. Detector End: wirebond connections
 - b. Extension Cable End: connector
 - c. High Voltage Bias: tabs at sensor edge with wirebond connections
- 5) Metallization: Gold plating compatible with wirebonding on wirebond pads only
- 6) Resistance: less than 1Ω roundtrip on DVDD, DGND, AVDD, AGND
- 7) Filtering: on cable of DVDD, DGND, AVDD, AGND, HV+, HV-
- 8) Signals:
 - a. CMD, RST, CLKP, CLKM, TRIGP, TRIGM, DOUT, VREF routed separately to each KPIX chip
 - b. DVDD, DGND, AVDD, AGND can be bussed to each KPIX chip
 - c. Digital signals are LVDS (low voltage differential signaling)

REVISIONS			
REV	DESCRIPTION	DATE	APPROVED



CAD GENERATED DRAWING, MANUAL CHANGES NOT ALLOWED

UNLESS OTHERWISE SPECIFIED DIMENSIONS AND TOLERANCES ARE IN MILLIMETERS AND APPLY TO THE FINISHED PART			 THIRD ANGLE PROJECTION		 UNIVERSITY OF NEW MEXICO DEPARTMENT OF PHYSICS AND ASTRONOMY ELECTRONICS SHOP ALBUQUERQUE, NEW MEXICO, USA 87131	
TOLERANCE ON: 1 PLACE DEC 2 PLACE DEC ANGLES ± 0.6 ± 0.2 $\pm 1/2^\circ$			DRAWN: J. BEHRENDT DATE: 4/23/08 DESIGNER: DATE:		TITLE: SENSOR CABLE	
MATL: _____ FINISH: _____			APPROVED: DATE: ENGINEER: DATE:		SIZE: B DWG NO: 0067A0401 REV: -	
			SCALE: 3/1		SHEET 1 OF 1	