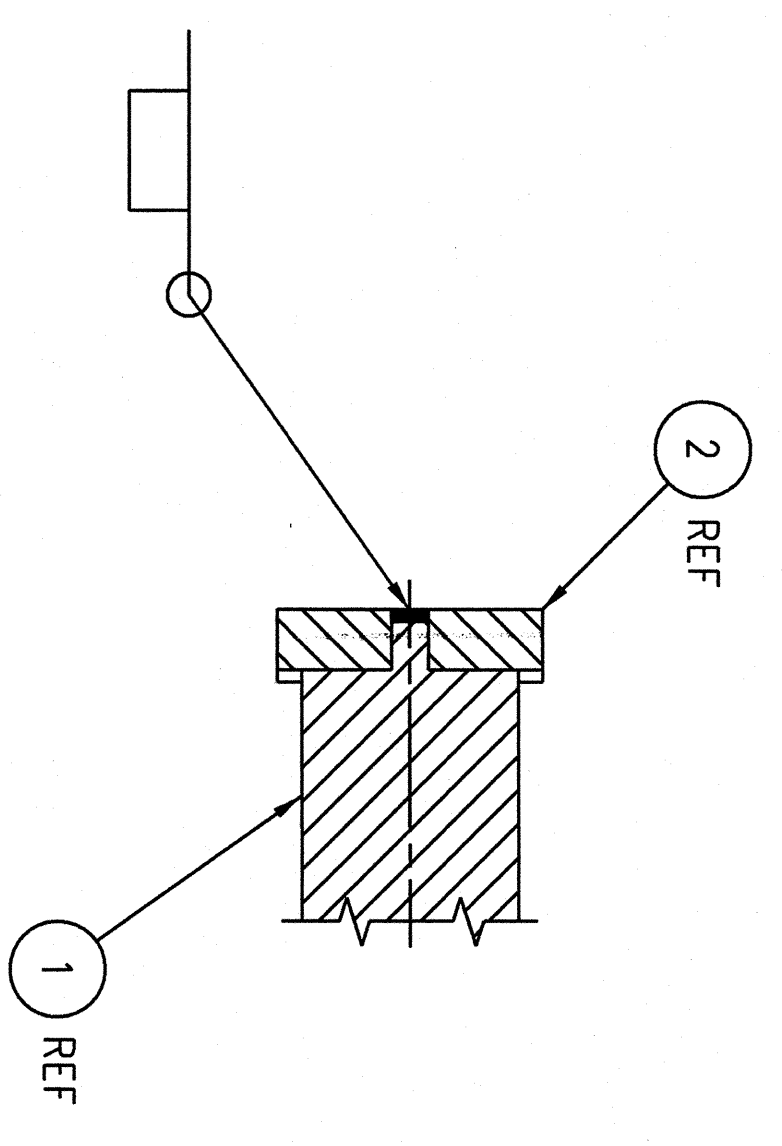
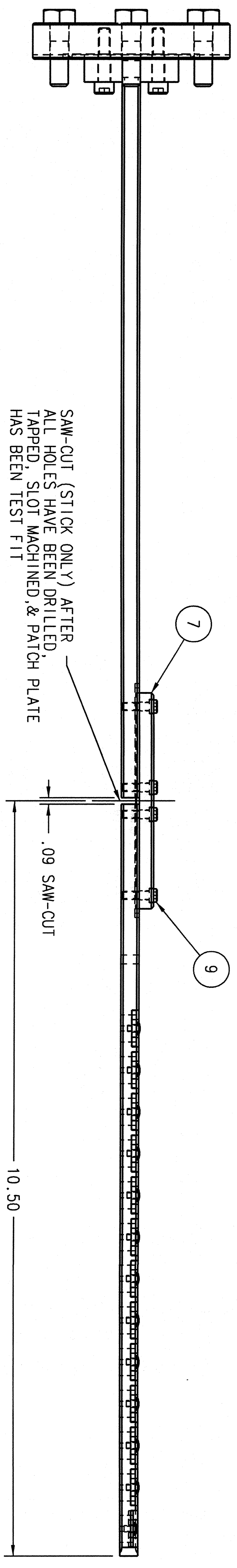
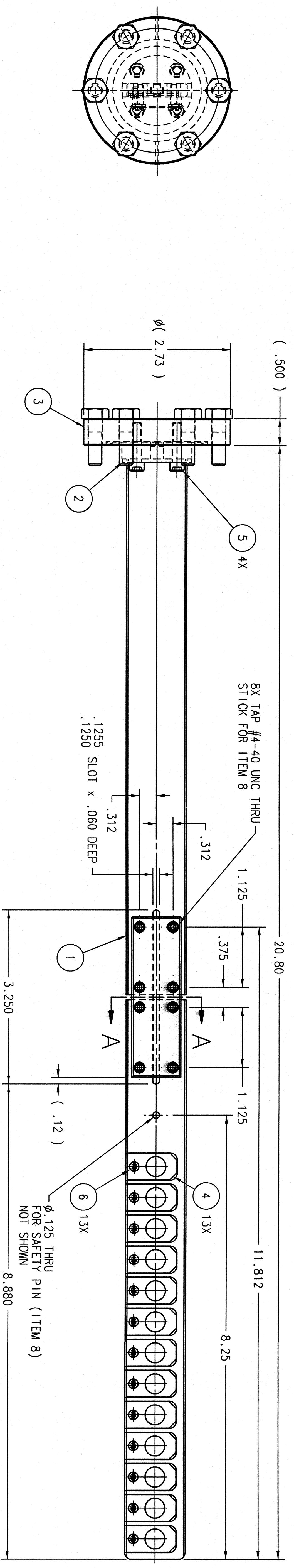


REVISION HISTORY			
ZONE	REV	DESCRIPTION	DATE
ALL	A	MADE STICK TWO PIECE W/ BOLTED CONNECTION	8/18/05



FLANGE/STICK WELDING DETAIL
SEE NOTE 2

SECTION A-A

QTY	ITEM NO.	PART NO.	DESCRIPTION	MATERIAL	NOTES
8	9	-	SOCKET HEAD CAP SCREW #4-40 UNC x .38 LG	STAINLESS STEEL	-
1	8	66840-B-04626	SAFETY PIN	-	-
1	7	66840-B-04625	PATCH PLATE	-	-
13	6	-	SLOTTED BINDING HEAD SCREW #2-56 x .25 LG	STAINLESS STEEL	-
4	5	-	SOCKET HEAD CAP SCREW #8-32 x .25 LG	STAINLESS STEEL	-
13	4	66840-B-04437	FOIL RETAINING PLATE	-	-
1	3	66840-B-04436	INSERTION FLANGE	-	-
1	2	66840-B-04435	STICK FLANGE	-	-
1	1	66840-D-04434	RADIATOR STICK MACHINING	-	-

DOCUMENT CONTROL STAMP
 IGT
 FINISH MACHINED SURFACES DEBURR & BREAK ALL SHARP EDGES
 UNLESS OTHERWISE NOTED
 DO NOT SCALE DRAWING

TRACKING NO.
 PROJECT: BEAM LINE LIBRARY COMPONENTS
 DRAWN: M. ZARECKY
 CHECKED: D. KASHY
 APPROVED: D. KASHY
 DATE: 5/1/06

CLAS BEAM LINE INSTRUMENTATION
 Tagger Radiator Radiator Stick Assembly
 66840-D-04432
 SCALE: 1:1
 SHEET 1 OF 1

NOTES:
 1.) SEE HALL B PHYSICIST FOR RADIATOR MATERIALS AND LOCATION.
 2.) FLANGE (ITEM 2) MUST REMAIN PERPENDICULAR TO STICK (ITEM 1)