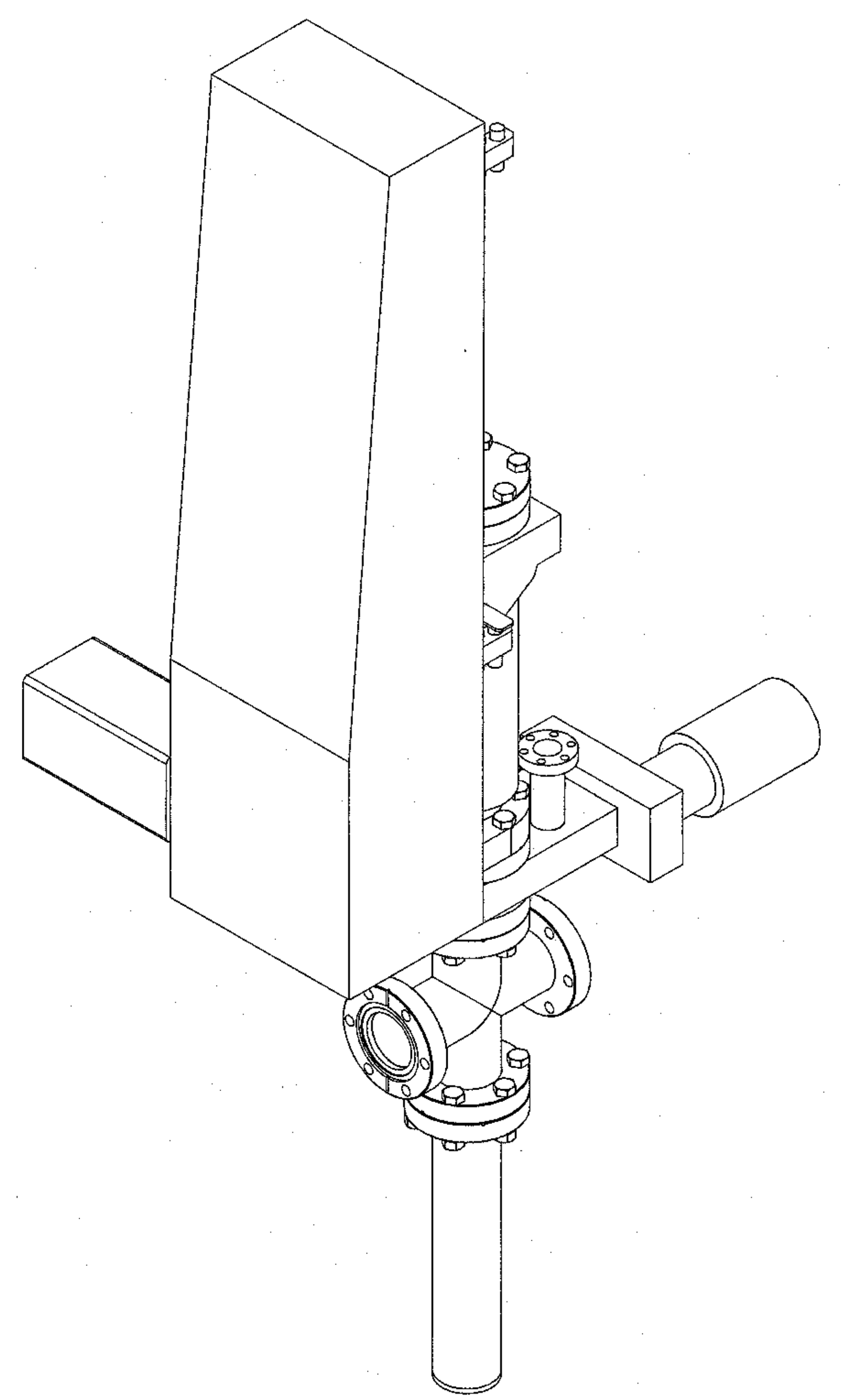
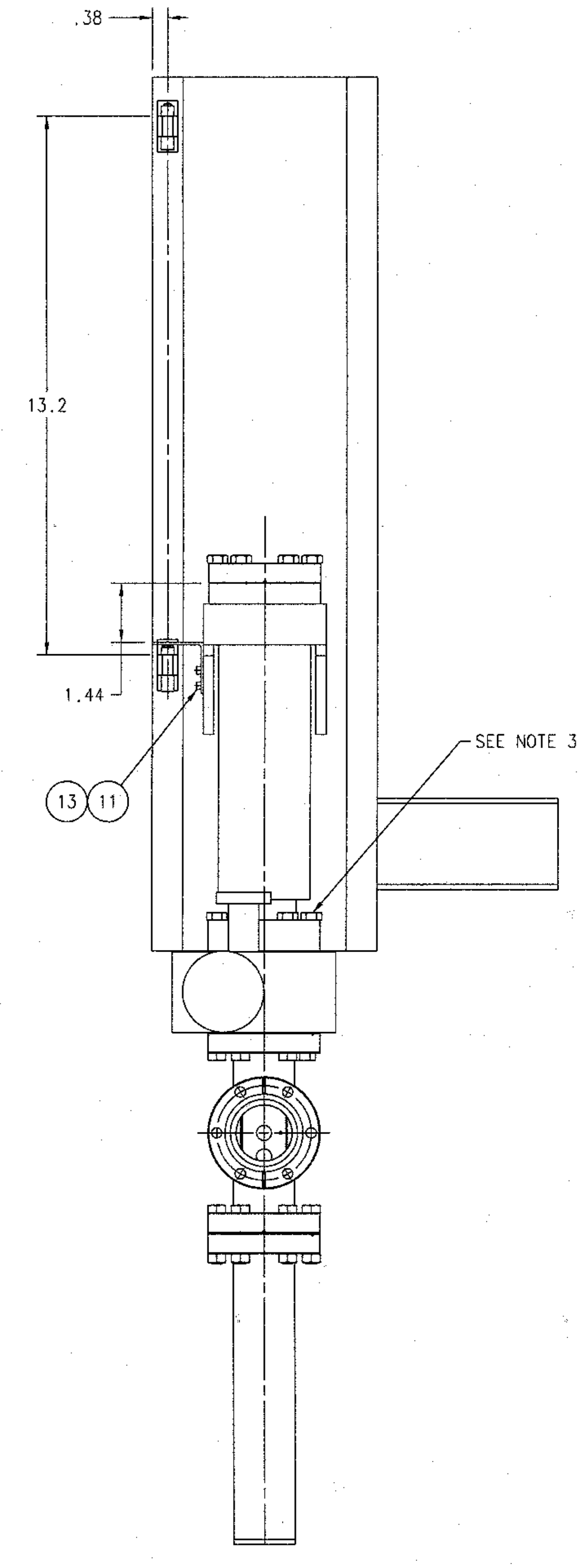
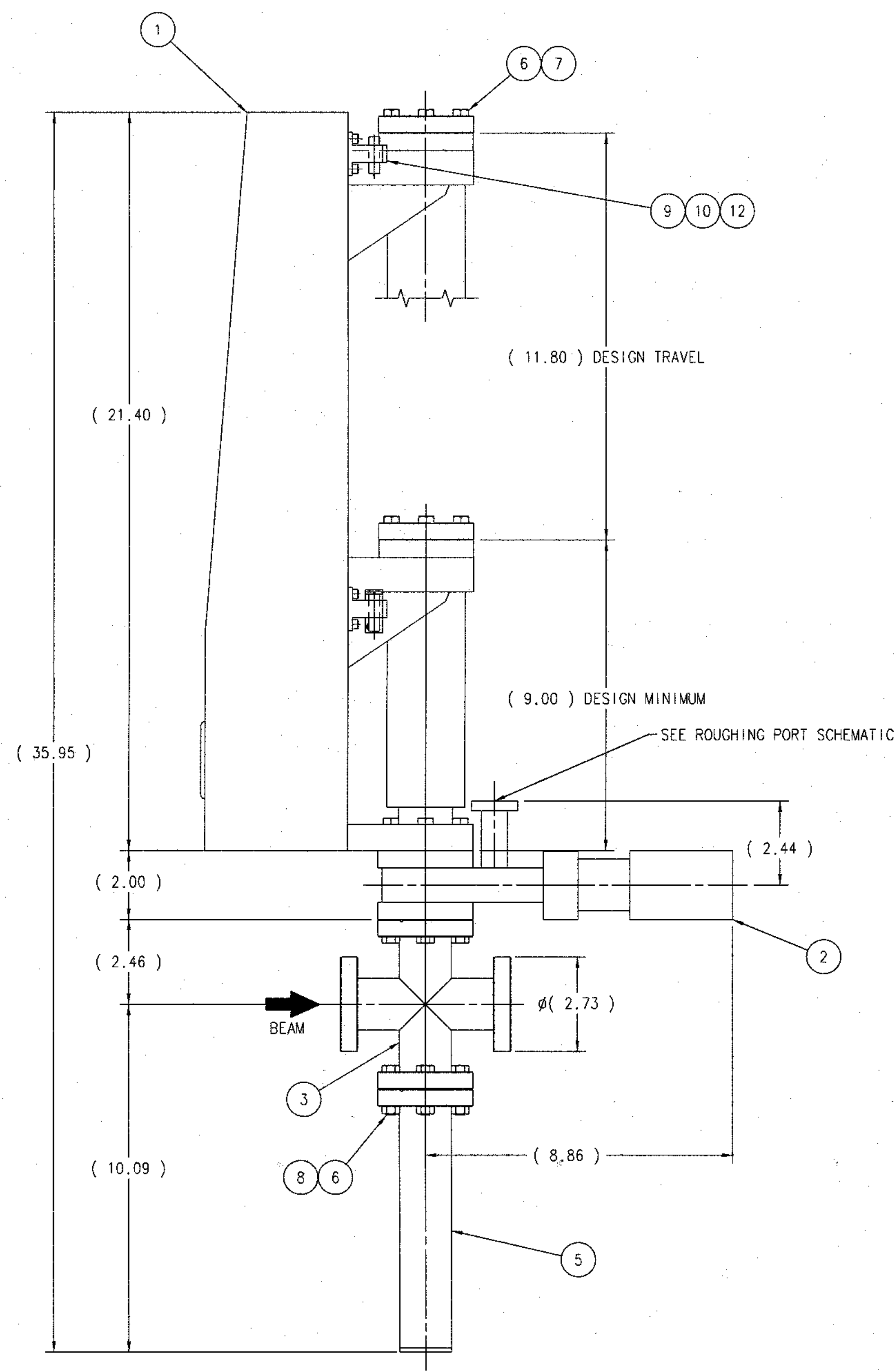
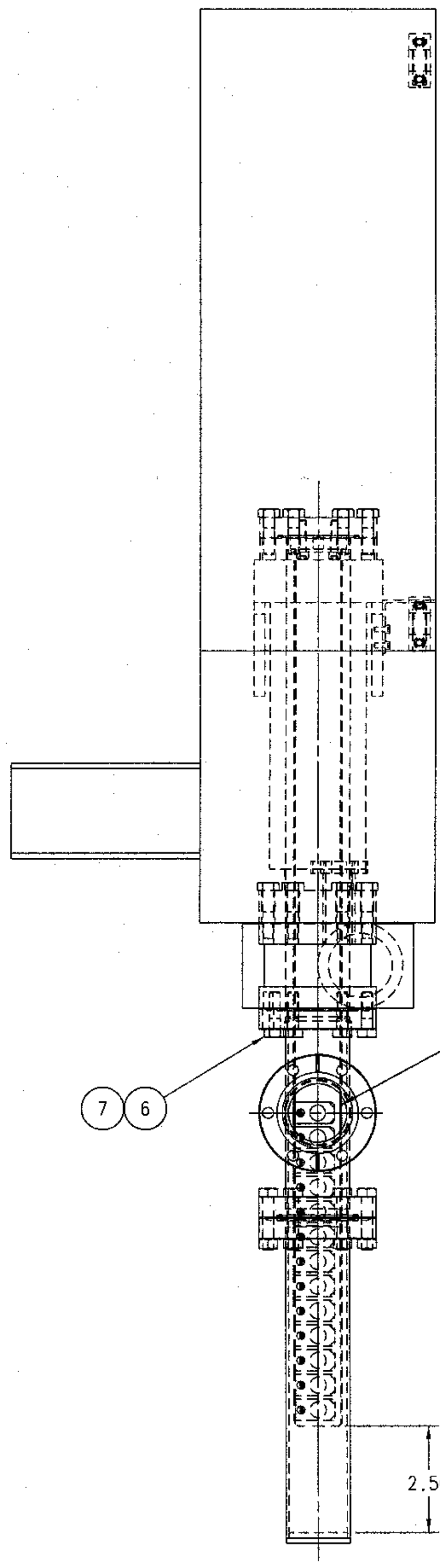


ROUGHING PORT SCHEMATIC



ISO VIEW

QTY	ITEM NO.	PART OR IDENTIFYING NO.	DESCRIPTION	MATERIAL SPECIFICATION	NOTES
2	13	-	SOCKET HEAD CAP SCREW #4-40 UNC x 1/4 LG	STAINLESS STEEL	2
4	12	-	SOCKET HEAD CAP SCREW #8-32 UNC x 1/4 LG	STAINLESS STEEL	2
1	11	66840-B-04438	LIMIT SWITCH STOP	-	2
2	10	VEEDER-ROOT MOD NO 0748320-007	ULTRA PRECISION CONTACT SWITCH TUBULAR w/CABLE & LOCK NUTS	-	2
2	9	66840-C-03876	LIMIT SWITCH HOLDER	-	2
1	8	MDC P/N 190004	HEX HEAD BOLT SET (FOR CLEAR) (1/4-28 x 1-1/4 LG)	-	-
3	7	MDC P/N 190002	HEX HEAD BOLT SET (FOR TAPPED) (1/4-28 x 7/8 LG)	-	-
A/R	6	MDC P/N 191147	GASKET COPPER 1.53 ID	-	-
1	5	66840-C-04433	HAT ASSEMBLY	-	-
1	4	66840-D-04432	RADIATOR STICK ASSEMBLY	-	-
1	3	MDC P/N 405002 (OR EQUAL)	FOUR WAY CROSS 2-3/4 CF	-	-
1	2	MDC P/N 302001-04	GATE VALVE 1.50 ID 2-3/4 CF w/ 3/4 ROUGHING PORT	-	-
1	1	MDC P/N 66542-01	V-PLANE SINGLE AXIS Z STAGE 1.50 BORE 2-3/4 CF w/STEP MTR	-	-

- NOTES:
- APPROXIMATE WEIGHT OF ASSEMBLY = 85 LBS
 - SELECT POSITION THEN DRILL & TAP FOR LIMIT SWITCHES AFTER INSPECTION OF V-PLANE (ITEM 1) FOR PROPER LOCATIONS.
 - STUDS & NUTS MAY BE REQUIRED AT THIS LOCATION.

DOCUMENT CONTROL STAMP	TRACKING NO. N/A	APPROVALS	DATE	THOMAS JEFFERSON NATIONAL ACCELERATOR FACILITY
MATERIAL SEE PARTS LIST	THIRD ANGLE PROJECTION	APPROVED: [Signature]	3/21/06	HALL B BEAM LINE INSTRUMENTATION Tagger Radiator Assembly
FINISH MACHINED SURFACES DEBURR & BREAK ALL SHARP EDGES	SCALE 1:1	DATE: 5/1/06	SIZE (DWG. NO.): E	66840-E-04431
DO NOT SCALE DRAWING				SHEET 1 OF 1