

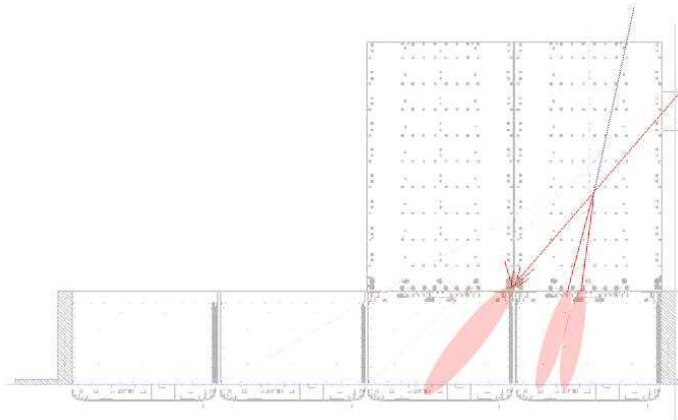
GLAST GSI 2006 Beamtest



Quick look on MC Tkr Variables

Johan Bregeon (INFN-Pisa)

November 2nd, 2006



Monte-Carlo simulation

- Beamtest Release v4r0909p11
- Dumb 1GeV/A carbon beam (patch $40 \times 40mm$ with $0.95 < \cos < 1.0$)
- Dumb 1GeV/A proton beam (patch $40 \times 40mm$ with $0.95 < \cos < 1.0$)

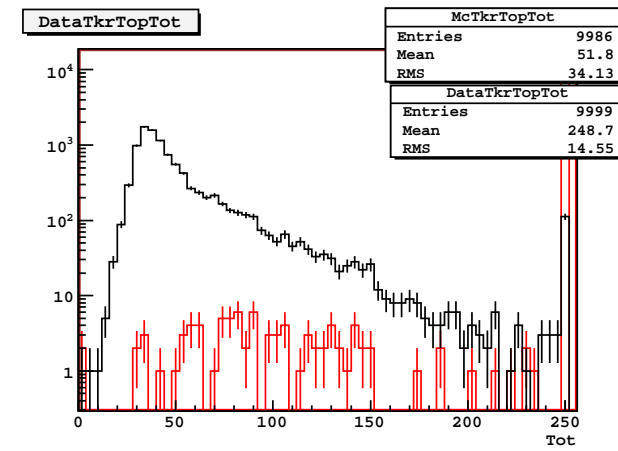
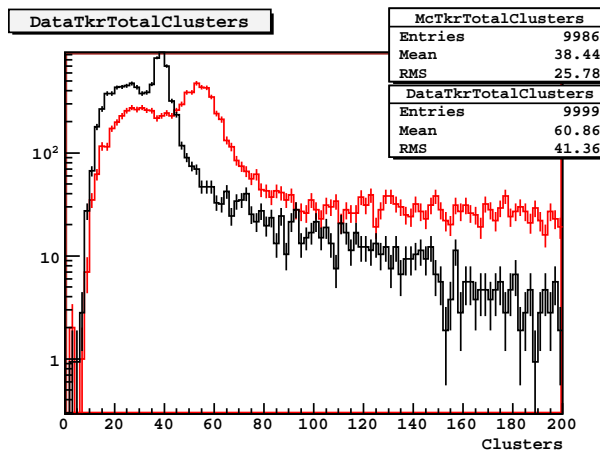
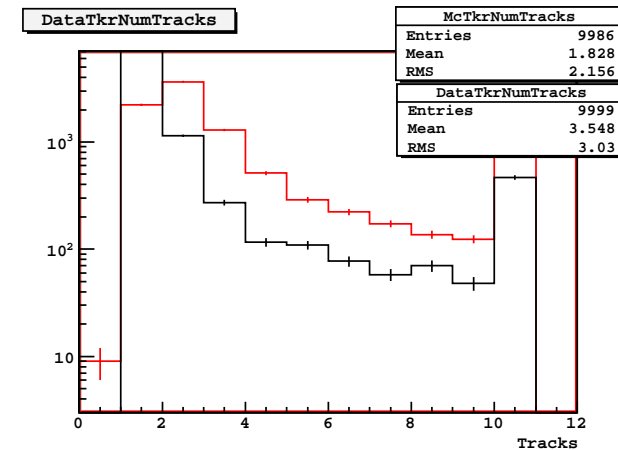
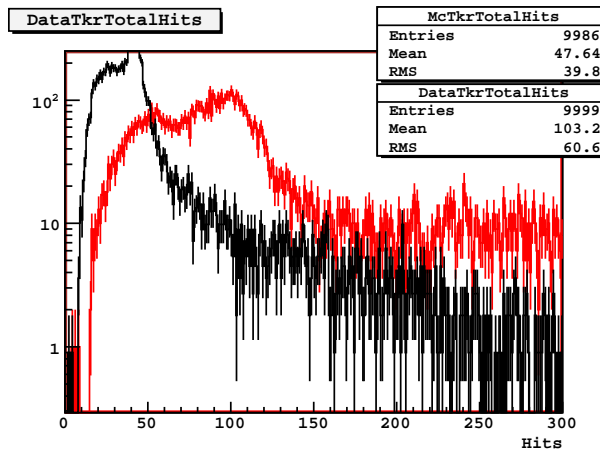
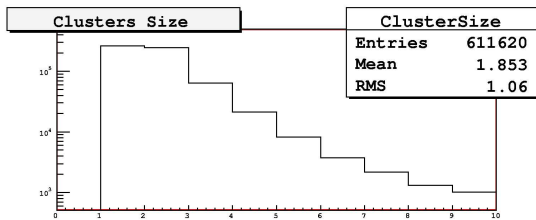
⇒ Carbon 1GeV/A is red

⇒ proton 12GeV is black

NO CUTS

Tracker global variables

- Mean number of hits around 100 !
- Most events have 2 tracks
- Twice as many clusters
- Clusters are bigger
- ToT is saturated



First Track variables

● Number of clusters on first track is almost the same !

● but Track RMS shows a larger distribution...

