

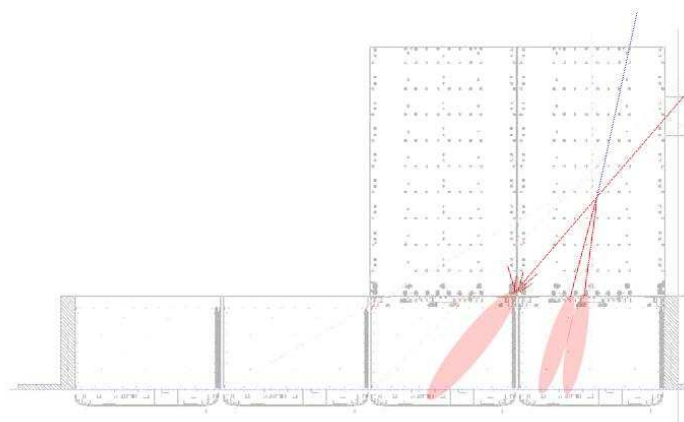
GLAST CERN 2006 Beamtest



G4@CERN
PipelineII
CalTuple
CAL Calibration

Johan Bregeon

Beamtest Analysis - January 16th, 2007



Discuss with G4 devs

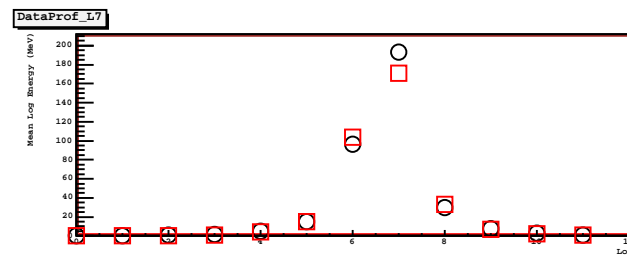
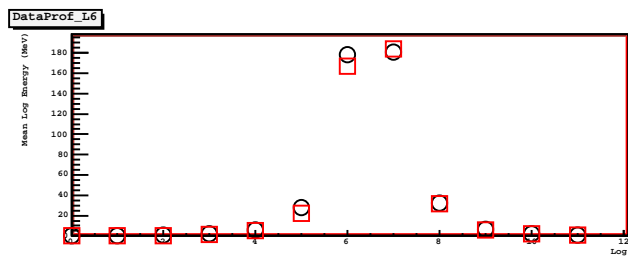
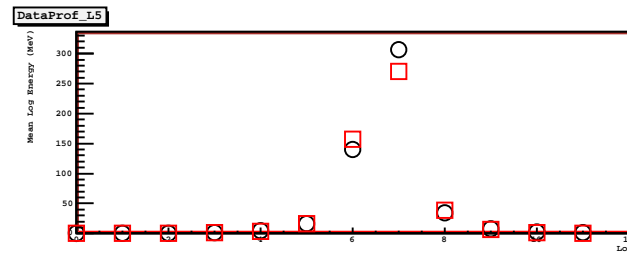
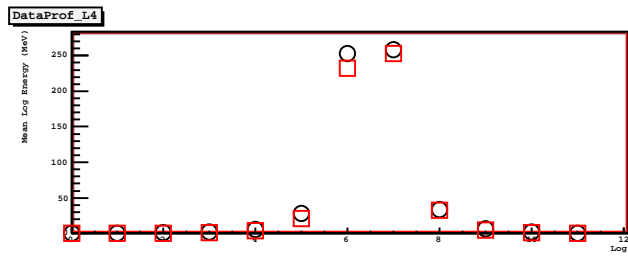
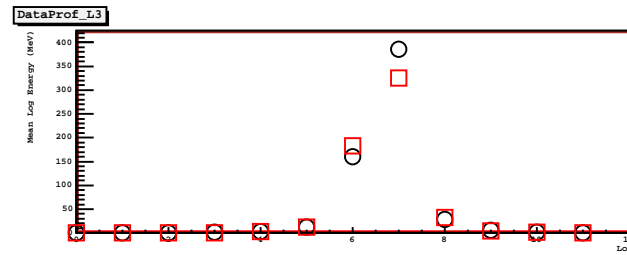
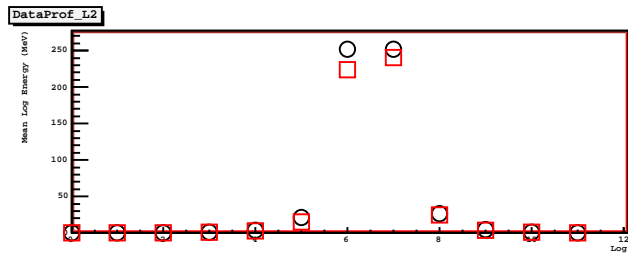
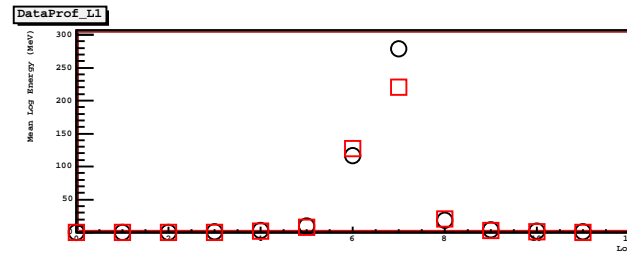
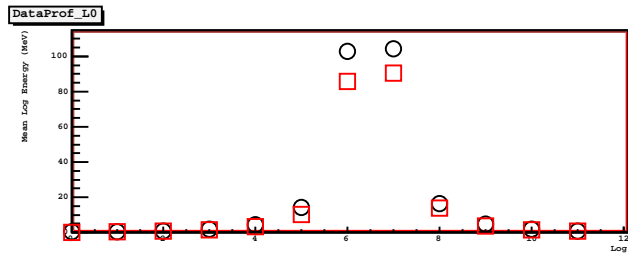
- probably january 29th
- positive contact with Vladimir Ivantchenko: G4 EM dev.
 - △ Share our G4 experience
 - △ Understand what we do wrong
 - △ Understand what G4 may do wrong
 - △ How can we improve our MC
- Main Topics
 - △ TKR hits
 - △ EM Shower spread
 - △ CAL Energy

BTMC in Pipeline II

- Working !
 - △ As tests : 1460, 2338, 2039
 - △ Accessible via de data catalog
- Still some minor issues to fix but you can ask for you MCs
- Some improvements in mind (feed back is already welcome)
- Soon data processing will move to pipeline II too

CalTuple

Transverse Shower Profile - BT-2338 10GeV 0degree



CAL Calibration

- Trying locally to reprocess data with modified calibration constants
 - △ modify the MeV per DAC value for the small diode in the xml file LOCALLY
 - △ reprocess data : ldf to digi to recon+merit to svac
 - △ tried to change one today but could not see the energy shifting...
 - △ need to understand which constant to change
- Data Like Simulation
 - △ goal is understand how to produce *data-like* simulations
 - △ next plan is to reprocess digi file from MC with modified calibration constants